

ERONGO ENERGY LIMITED

ERONGO ENERGY LIMITED
ACN 114 175 138

Registered Office:
30 LEDGAR ROAD, BALCATTA
WESTERN AUSTRALIA 6021

Postal Address:
PO BOX 717
BALCATTA WA 6914

Contact Details:
TELEPHONE 61 8 9240 8801
FACSIMILE 61 8 9240 2406
ADMIN@ERONGOENERGY.COM.AU
WWW.ERONGOENERGY.COM.AU

22 March 2007

The Companies Announcement Office
Australian Stock Exchange Limited
Level 10 Exchange Centre
20 Bond Street
Sydney NSW 2000

Dear Sir

Please find attached the Company's presentation document. The presentation document will be posted to the Company's website and made available at investor presentations.

Yours faithfully



Paul Jurman
Company Secretary

ERONGO ENERGY
LIMITED

OVERVIEW

- **ASX listed (ERN, ERNO)**
- **Significant ground holding in Namibia prospective for uranium**
- **Targets include both primary granite-hosted and secondary calcrete-hosted styles of mineralisation**
- **Historic work (early 1980s) identified presence of mineralised zones**
- **Significant untested potential**
- **Drilling to commence on key targets in April 2007**
- **Experienced board and management team**

ERONGO ENERGY LIMITED

- ASX listed (ERN, ERNO)
- 41.8m shares on issue
- 37.5m options on issue (April 2009, 20c)
- Directors hold approximately 10%
- Cash A\$3.75m
- Directors

Mathew Walker (Chairman) – Investment banking

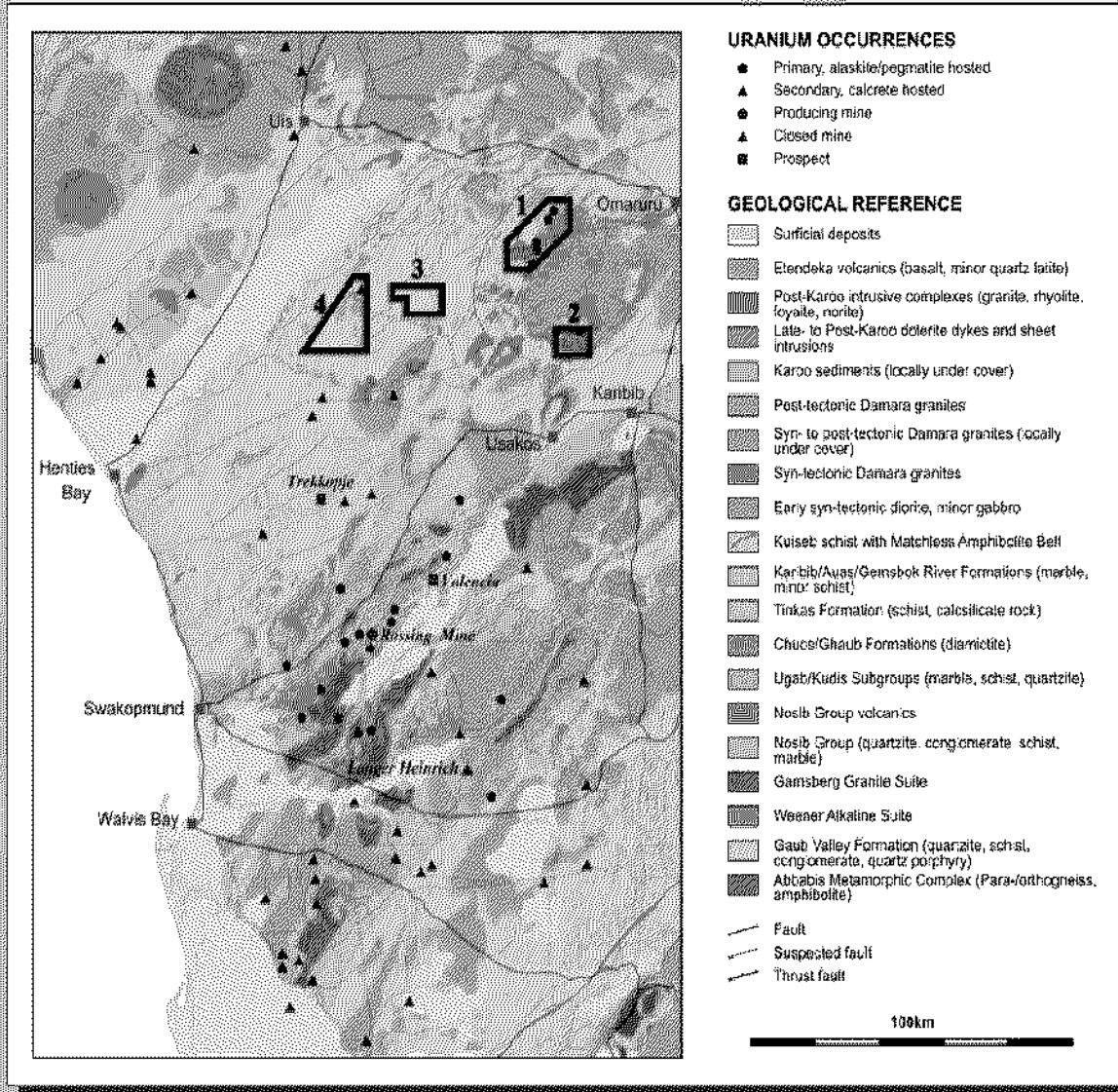
Patrick Flint (Executive Director)

Mark Gasson (Technical Director)

David Ledger (Non-executive) – Corporate advisory

Significant experience in exploration, Africa, management of juniors, fundraising

URANIUM PROJECTS - LOCATION



- Situated in the mid central Namibia, south west Africa
- Four granted EPLs
- 90% interest
- Namibian partner 10%
- Cover 920 sq kms
- Readily accessible by road
- Good local infrastructure

ERONGO GRANITES PROJECT

- EPLs 3453 and 3454, covering 420 sq kms
- South and north of the Erongo Complex
- Geology is dominated by the post tectonic younger Erongo Granites which have intruded basement Salem granites and overlying Karoo sediments
- Probable that uranium minerals were remobilised and concentrated within foliated granites
- Significantly higher radiometric readings concentrated along the contact zone between the Erongo and Salem granites
- Targeting intrusive hosted uranium deposit

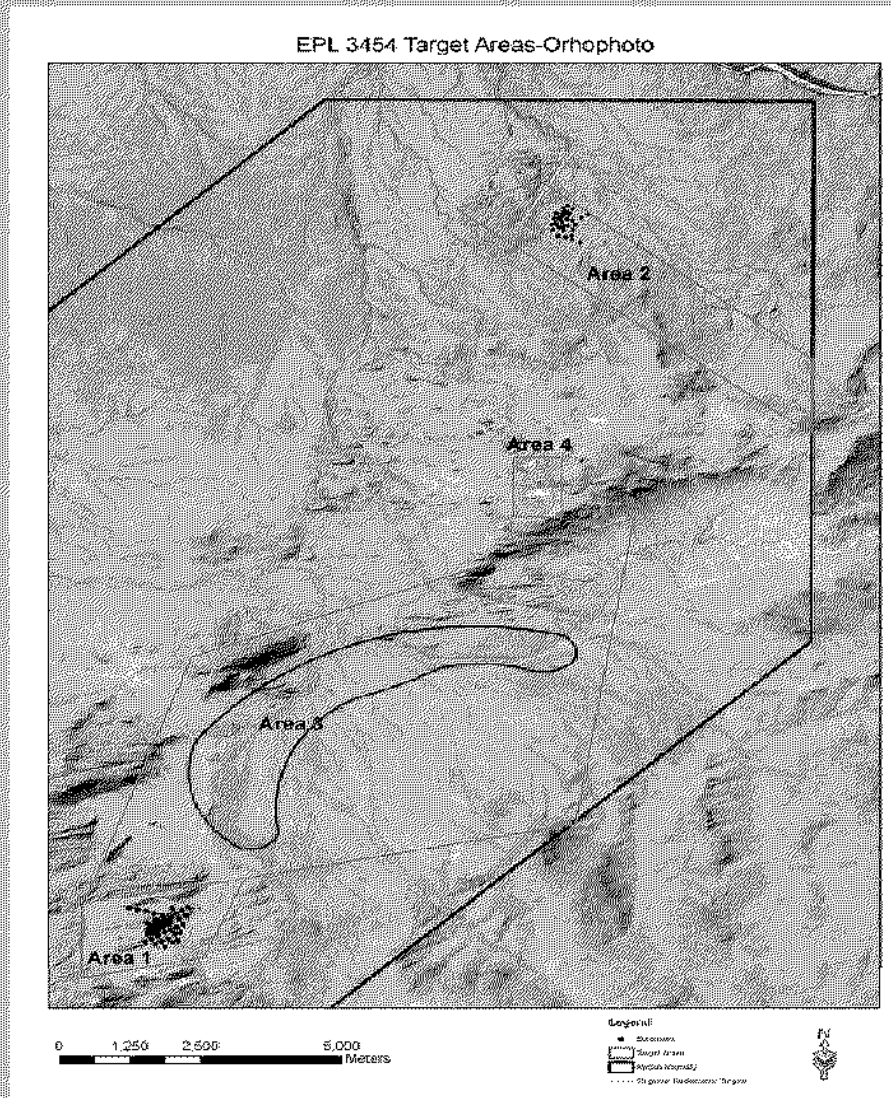
ERONGO GRANITES PROJECT



ERONGO GRANITES PROJECT – HISTORIC DATA

- **Detailed exploration activities undertaken by Goldfields and Falconbridge in the 1970s and early 1980s**
- **No reported, systematic exploration has been undertaken on the area since the early 1980s**
- **Namibian Government completed airborne radiometric survey in 2002**
- **ERN has reviewed historic database and acquired and reprocessed airborne radiometric data**
- **Four key target areas now identified**

ERONGO GRANITES PROJECT



- Summary map showing:
- historic drill hole localities, extent of Radon gas anomaly, interpreted geophysical targets and priority exploration targets on the orthophoto background
 - contact between the younger Erongo Granite and the older Salem granite

ERONGO GRANITES PROJECT – AREA 1

- 68 percussion holes and two diamond holes drilled by Goldfields and Falconbridge. Better results include:
 - 32m at 348 ppm U₃O₈ from 6m to 38m
 - 12m at 310 ppm U₃O₈ from 18m to 30m
 - 17m at 287 ppm U₃O₈ from 28m to 45m
 - 39m at 272 ppm U₃O₈ from 2m to 41m
 - 33m at 248 ppm U₃O₈ from 13m to 46m
- Broadly flat undulating zone of mineralization 25 to 35m thick over an area of 800m by 250m
- The mineralisation remains open to the south for potentially another 800m
- mineralogical investigation positively identified uraninite as the major primary uranium mineral
- metallurgical study concluded that no metallurgical problems existed

ERONGO GRANITES PROJECT – AREAS 2, 3 and 4

Area 3

- **Radon gas survey by Goldfields defined a 5kms by 2kms anomaly coincident with the Erongo/Salem Granite contact**
- **Drill programme abandoned as the holes kept caving**

Area 2

- **Limited drilling to date. Good mineralisation intercepted in 3 holes**
- **Significant, untested radiometric target immediately west of historic drilling now identified. Target area covers 1.5kms by 1km**
- **Significant, untested radiometric target in south of Area 2. Target area covers 4kms by 0.5kms**

Area 4

- **Significant, untested radiometric target covering 1km by 0.5kms**

ERONGO GRANITES PROJECT – PROPOSED EXPLORATION PROGRAMME

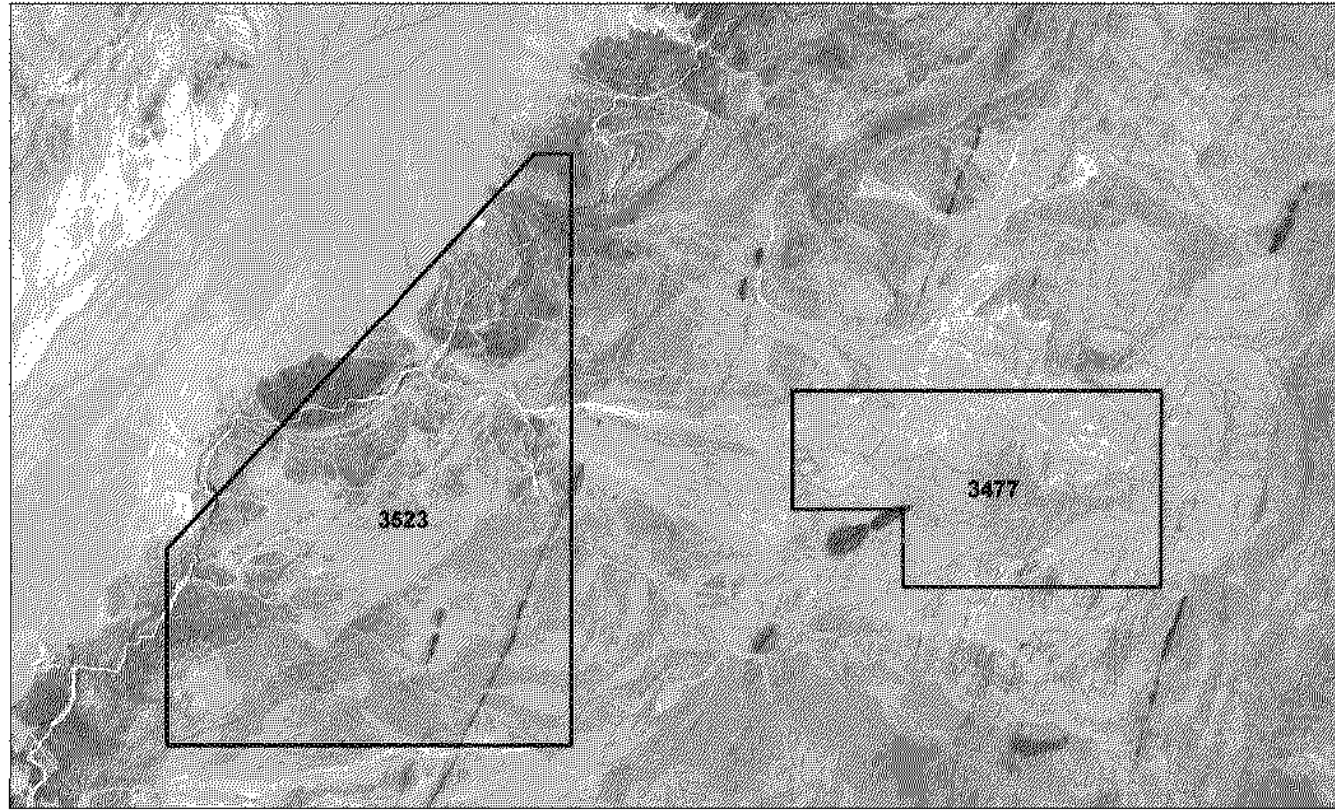
- **RC rig scheduled to commence an initial 10,000 metre drilling programme in April 2007**
- **Drilling at Area 1 will be designed to confirm historic results and test potential extensions of the previously identified mineralised zone**
- **Ground radiometric surveys will be completed at Areas 2, 3 and 4 to further refine anomalous targets, which will then be drill tested**
- **Objective is to define large tonnage, low grade resources at each of the target areas**

SPITZKOPPE PROJECT

- EPLs 3477 and 3523, covering 390 sq kms
- West of Erongo Granites Project
- Project area lies within an ancient drainage system downslope from surrounding granites elevated in uranium
- Strong calcrete development has been identified in the western area of EPL 3477
- A number of drainage related targets have also been identified by geophysical interpretation of radiometric data
- Limited historic work
- Targeting secondary calcrete-hosted mineralisation as well as granite-hosted mineralisation

SPITZKOPPE PROJECT

EPL 3477 & EPL 3523 Landsat 7



0 5 10 20 Kilometers

Legend
----- Regional Recreation Targets
EPL



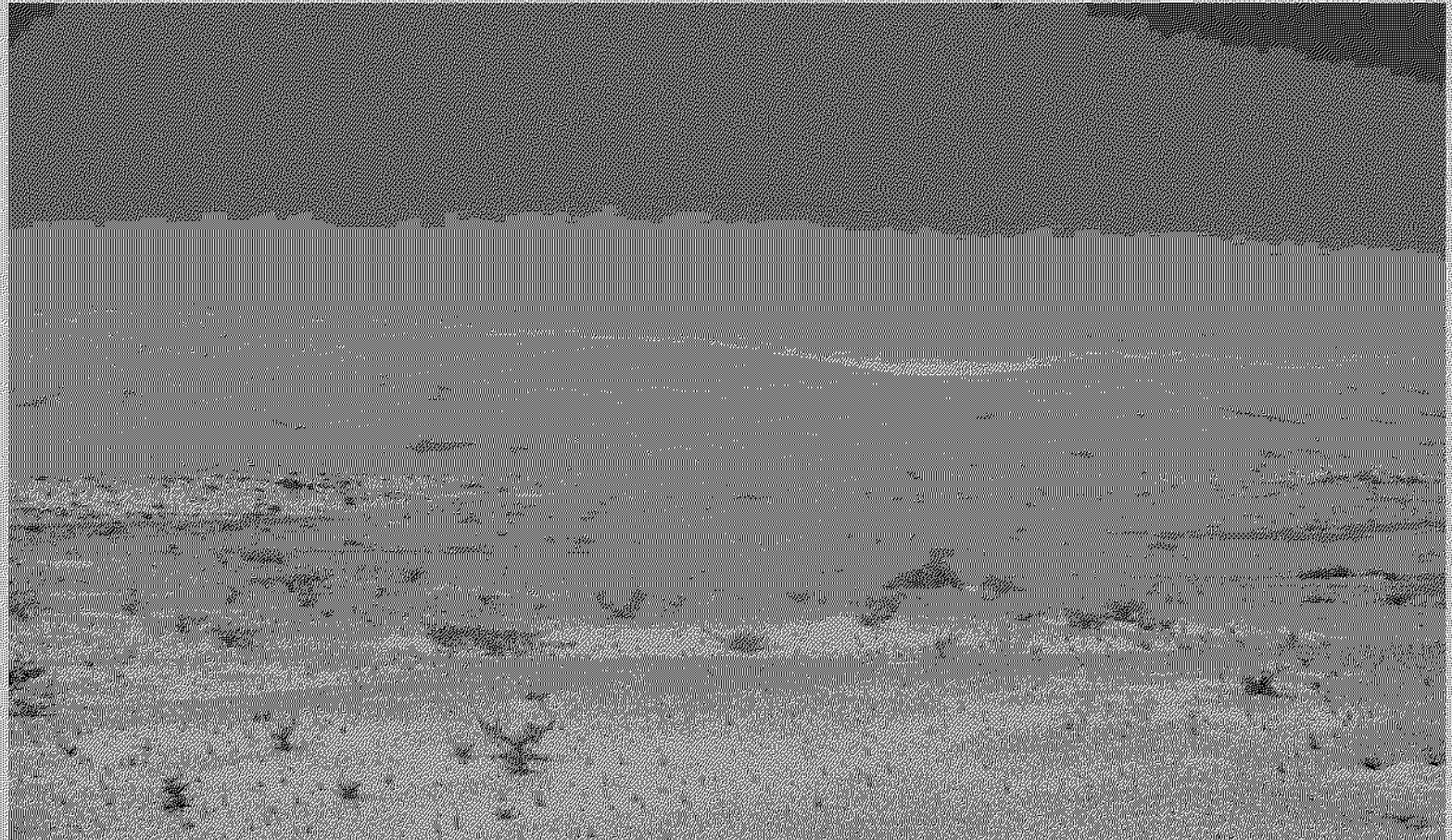
NAMIBIAN EXPLORERS

Company	Market / Code	Project
Uramin	TSX, AIM / UMN	Trekkopje
Forsys	TSX / FSY	Valencia
Bannerman	ASX / BMN	Goanikontes, Swakop River
Deep Yellow	ASX / DYL	Reptile
Extract Resources	ASX / EXT	Husab
WA Metals	ASX / WME	Marenica

KOICHAB HEAVY MINERAL SANDS PROJECT

- Part of original acquisition agreement, 70% interest
- Located in south western Namibia
- Total project area approx 2,000 sq kms
- Typical dune sand deposit, extends over an area of approximately 45 by 20 kms
- Preliminary samples taken indicate the deposit contains minerals such as ilmenite, rutile, magnetite, garnet and zircon, with heavy mineral content approximately 10%
- ERN will complete preliminary evaluation and then look to spin off

KOICHAB HEAVY MINERAL SANDS PROJECT



SUMMARY

- **Large holding of relatively unexplored ground in areas with proven uranium mineralisation**
- **Potential for delineation of large tonnage, low grade resource at Area 1**
- **Potential for discovery of additional deposits at Erongo Granites and Spitzkoppe Projects**
- **Drilling scheduled to commence in April 2007**
- **Tight capital structure**
- **Funded for 2007 programme**
- **Based on Namibian project valuations, potential for significant re-rating of share price**