

# NIMRODEL

resources limited

Level 5 33 York Street  
Sydney NSW 2000  
ph (02) 8916 6777 fax (02) 8916 6732  
[www.nimrodel.com.au](http://www.nimrodel.com.au)  
A.C.N 119 670 370

---

**TO:** COMPANY ANNOUNCEMENTS OFFICE

**COMPANY:** AUSTRALIAN SECURITIES EXCHANGE LIMITED

**FROM:** SHANE HARTWIG

**DATE:** 11<sup>th</sup> December 2007

**No. OF PAGES:** 2 (INCLUDING THIS COVER PAGE)

---

## LARGE GOLD ANOMALIES IDENTIFIED AT BUCKAROO

- Two plus 1km wide gold anomalies defined at Buckaroo.
- Soil assays up to 0.61 g/t gold

As outlined in the Company's recent AGM presentation, the Company is pleased to announce that it has today received the final results and interpretation from the recent auger soil sampling program at its 100%-owned Buckaroo Project in Central NSW and these results have identified significant new gold anomalies.

Assays have been received for 1,374 auger soil samples collected on a broad 400m by 50m grid. The sampling was designed to follow-up areas of anomalous rockchip sampling undertaken in conjunction with regional mapping carried out in early-2007.

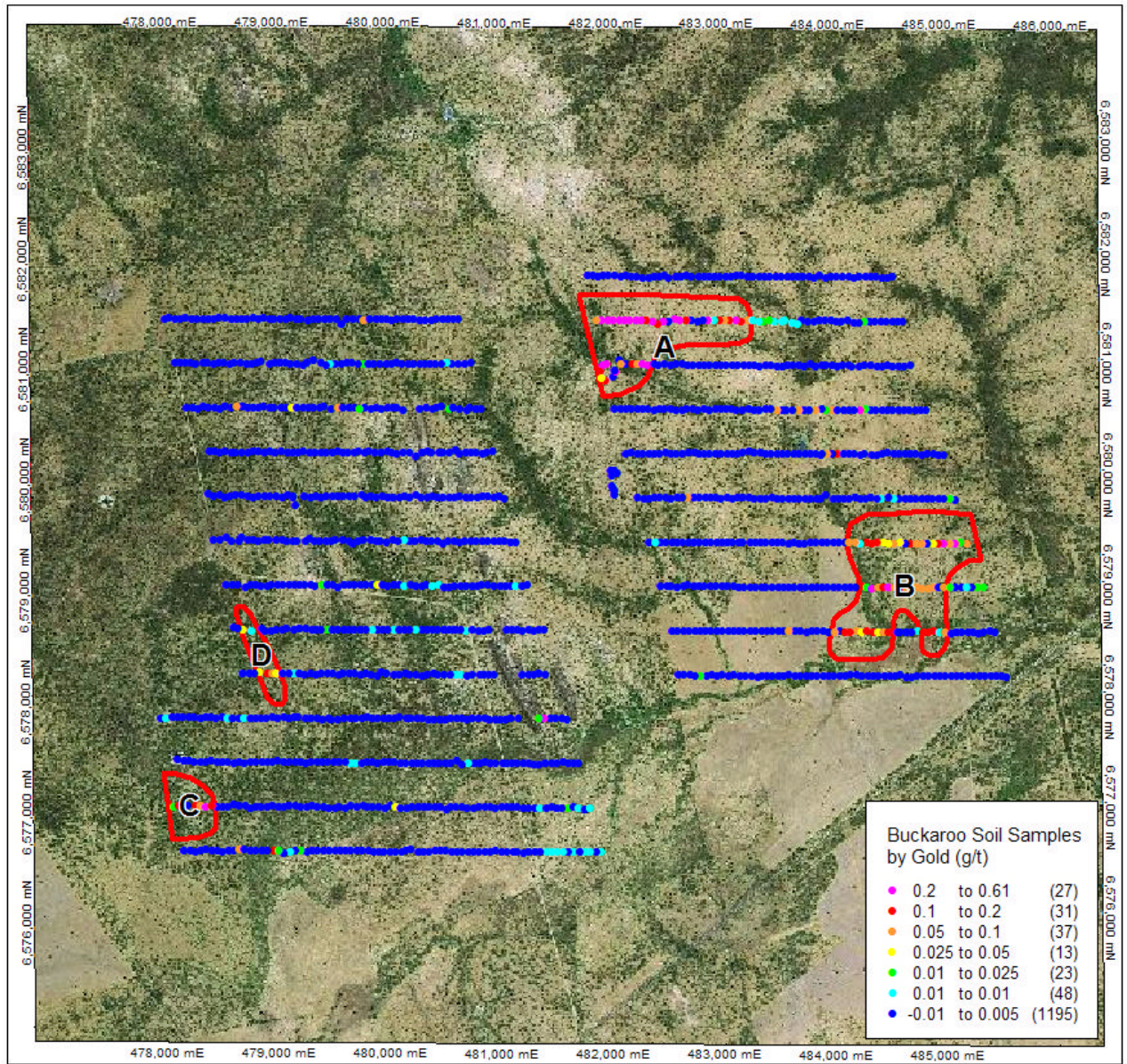
The area sampled covers approximately 25 square kilometers and is the first large "systematic" surface geochemical survey of its type completed in the area.

Two large zones of gold anomalism have been identified. The two main anomalies are in the north (A) and south-east (B) of the sampled area.

Anomaly A (as shown in figure 1) currently exists as 43 samples averaging 0.17 grams per tonne (g/t) with a maximum of 0.61 g/t gold over an area approximately 1.35km east-west, 0.55 km north-south and open to the west.

Anomaly B (as shown in figure 1) consists of 54 samples averaging 0.09 g/t with a maximum of 0.31 g/t gold over an area approximately 1.05km east-west, 0.80km north-south and is open to the north-east.

Follow-up "infill" sampling of the anomalous areas will be undertaken as a priority early in the new year, designed to define the full extent of the anomalies and further delineate drill targets.



**Figure 1 – Buckaroo soil samples coloured by gold grade, overlaid on aerial photography**

*The information in this report that relates to Exploration Results, Mineral Resources or Ore Reserves of the projects owned by Nimrodel Resources Limited is based on information compiled by Mr. David Ward BSc, who is a member of the Australasian Institute of Mining and Metallurgy and has sufficient experience which is relevant to the style of mineralisation and type of deposit under consideration and to the activity which he is undertaking to qualify as Competent Persons as defined in the 2004 Edition of the 'Australasian Code for Reporting of Exploration Results, Mineral Resources and Ore Reserves'. Mr. David Ward consents to the inclusion in the report of the matters based on his information in the form and context in which it appears*