

For personal use only



# TNG LIMITED



*Resources Rising Stars – September 2009*

Paul Burton – CEO

# Important Notices and Forward-Looking Statements

## **Forward-Looking Statements**

*This presentation has been prepared by TNG Ltd. This document contains background information about TNG Ltd current at the date of this presentation. The presentation is in summary form and does not purport to be all inclusive or complete. Recipients should conduct their own investigations and perform their own analysis in order to satisfy themselves as to the accuracy and completeness of the information, statements and opinions contained in this presentation.*

*This presentation is for information purposes only. Neither this presentation nor the information contained in it constitutes an offer, invitation, solicitation or recommendation in relation to the purchase or sale of TNG Ltd shares in any jurisdiction.*

*This presentation may not be distributed in any jurisdiction except in accordance with the legal requirements applicable in such jurisdiction. Recipients should inform themselves of the restrictions that apply in their own jurisdiction. A failure to do so may result in a violation of securities laws in such jurisdiction.*

*This presentation does not constitute investment advice and has been prepared without taking into account the recipient's investment objectives, financial circumstances or particular needs and the opinions and recommendations in this presentation are not intended to represent recommendations of particular investments to particular persons. Recipients should seek professional advice when deciding if an investment is appropriate. All securities transactions involve risks, which include (among others) the risk of adverse or unanticipated market, financial or political developments.*

*To the fullest extent permitted by law, TNG Ltd, its officers, employees, agents and advisers do not make any representation or warranty, express or implied, as to the currency, accuracy, reliability or completeness of any information, statements, opinions, estimates, forecasts or other representations contained in this presentation. No responsibility for any errors or omissions from this presentation arising out of negligence or otherwise is accepted.*

*This presentation may include forward looking statements. Forward looking statements are only predictions and are subject to risks, uncertainties and assumptions which are outside the control of TNG Ltd. Actual values, results or events may be materially different to those expressed or implied in this presentation.*

## **Competent Person's Statement**

*The information in this report that relates to Exploration Results, Mineral Resources or Ore Reserves is based on information compiled by Paul Burton who is a Member of The Australasian Institute of Mining and Metallurgy and a Director of TNG Limited. Paul Burton has sufficient experience relevant to the style of mineralisation and type of deposit under consideration and to the activity which he is undertaking to qualify as a Competent Person as defined in the 2004 Edition of the 'Australasian Code for Reporting of Exploration Results, Mineral Resources and Ore Reserves'. Paul Burton consents to the inclusion in the report of the matters based on his information in the form and context in which it appears.*



# Overview



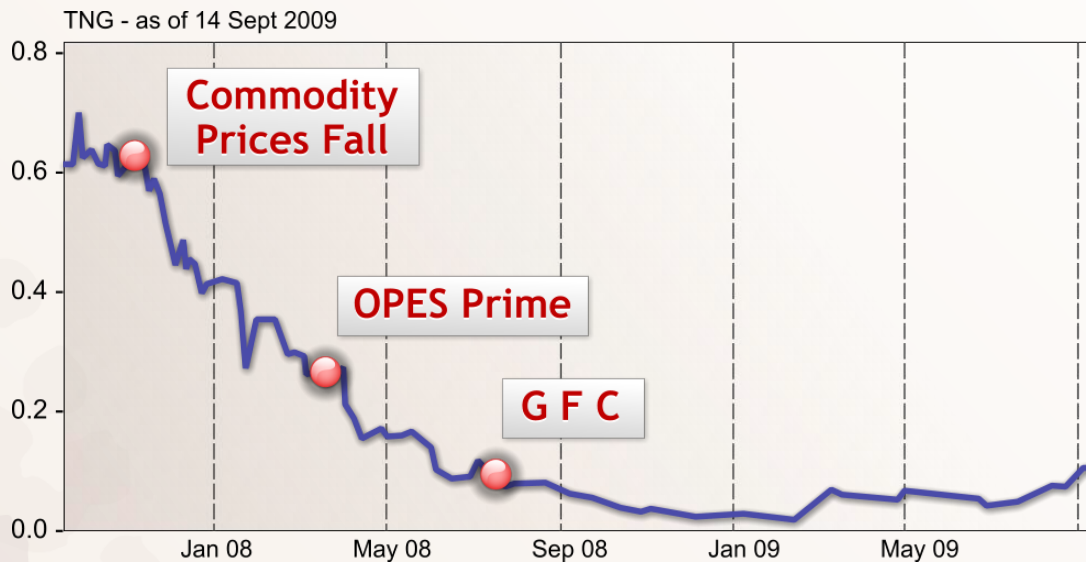
- **Manbarrum Base Metal Project (100%, NT)** – a potentially world-class district:
  - *JORC >36Mt combined zinc-lead-silver resources*
  - *Emerging MVT base metal district with multiple deposits*
  - *Outstanding exploration upside*
- **Mount Peake Project (100%, NT)** – a newly discovered poly-metallic deposit:
  - *Current JORC resource 107Mt grading 0.3% vanadium, 5% titanium, 25% iron*
  - *Nickel-Copper-PGM potential at depth – drilling commencing later in 2009*
- Strong technical team with extensive operating experience in northern WA, NT

For personal use only



# The last 18 months...

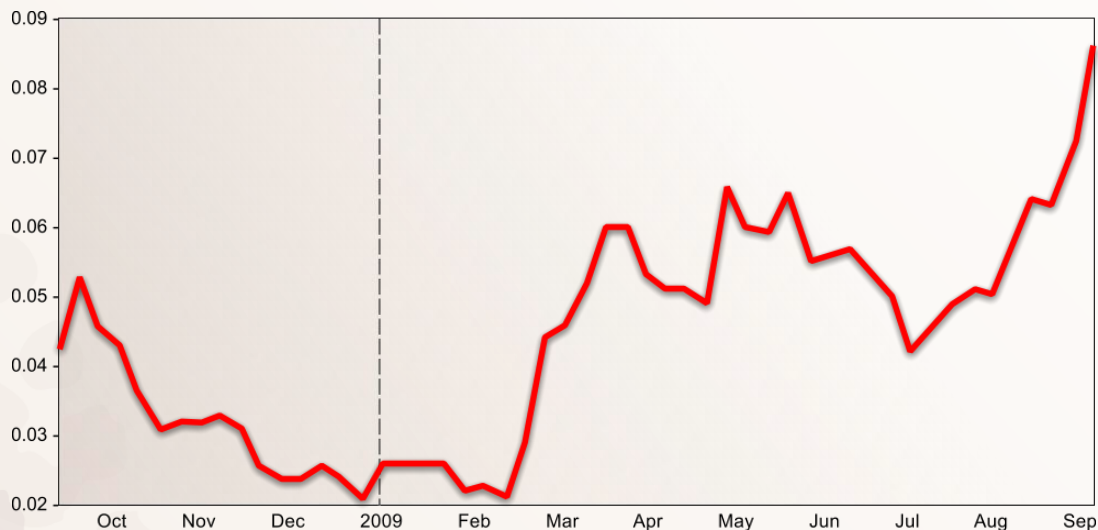
For personal use only



- TNG shares fell to record lows in 2008:
  - impact of Opes Prime,
  - collapse in commodity prices
  - onset of the “GFC”



# The last 18 months...



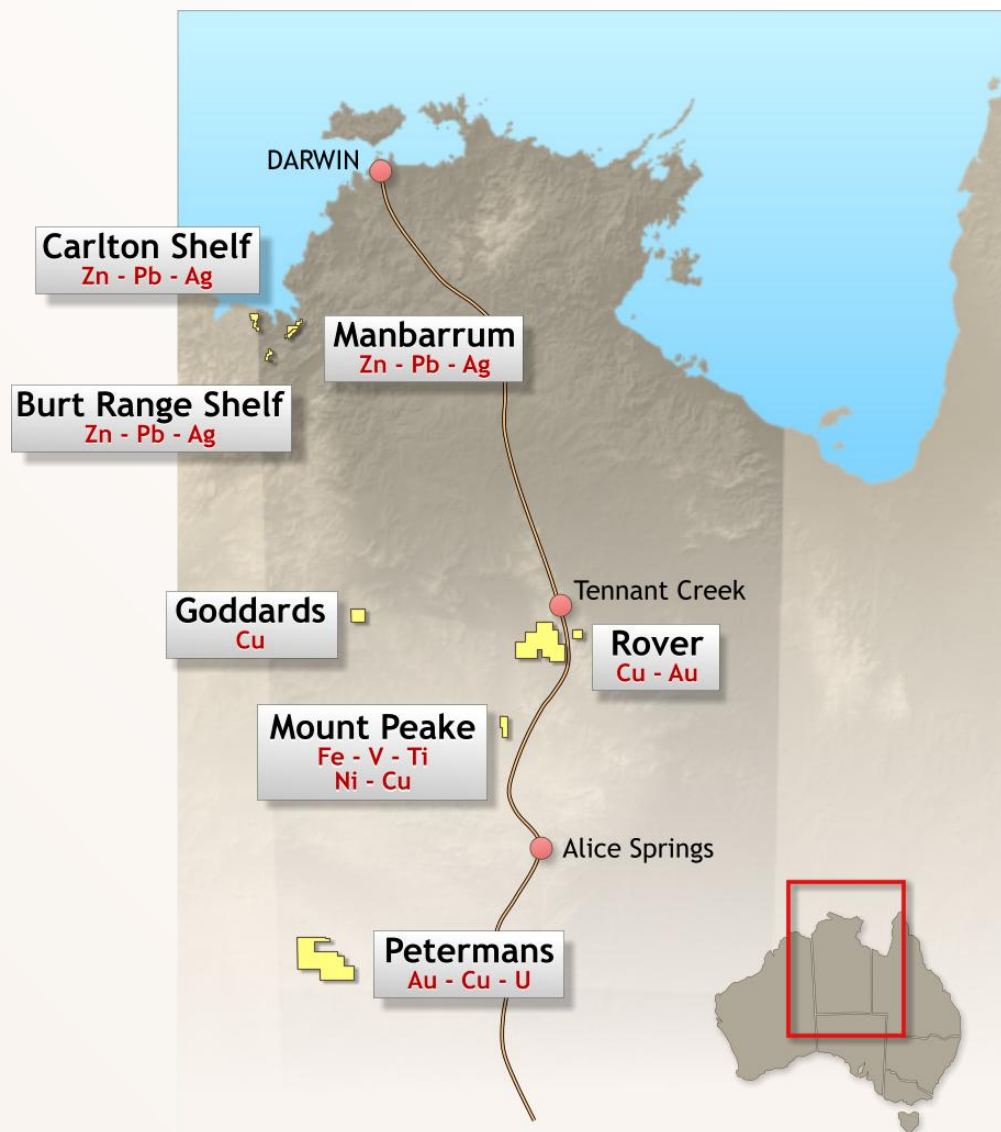
- The Company successfully weathered these impacts,
- maintained strong financial position
- successfully progressed exploration projects
- Improved asset base



# Northern Australia Projects



- Multi-commodity focus
- Emerging MVT Zinc district at Manbarrum
- New discovery at Mt Peake
- Copper - Gold potential at Rover



For personal use only



# Manbarrum Project



For personal use only

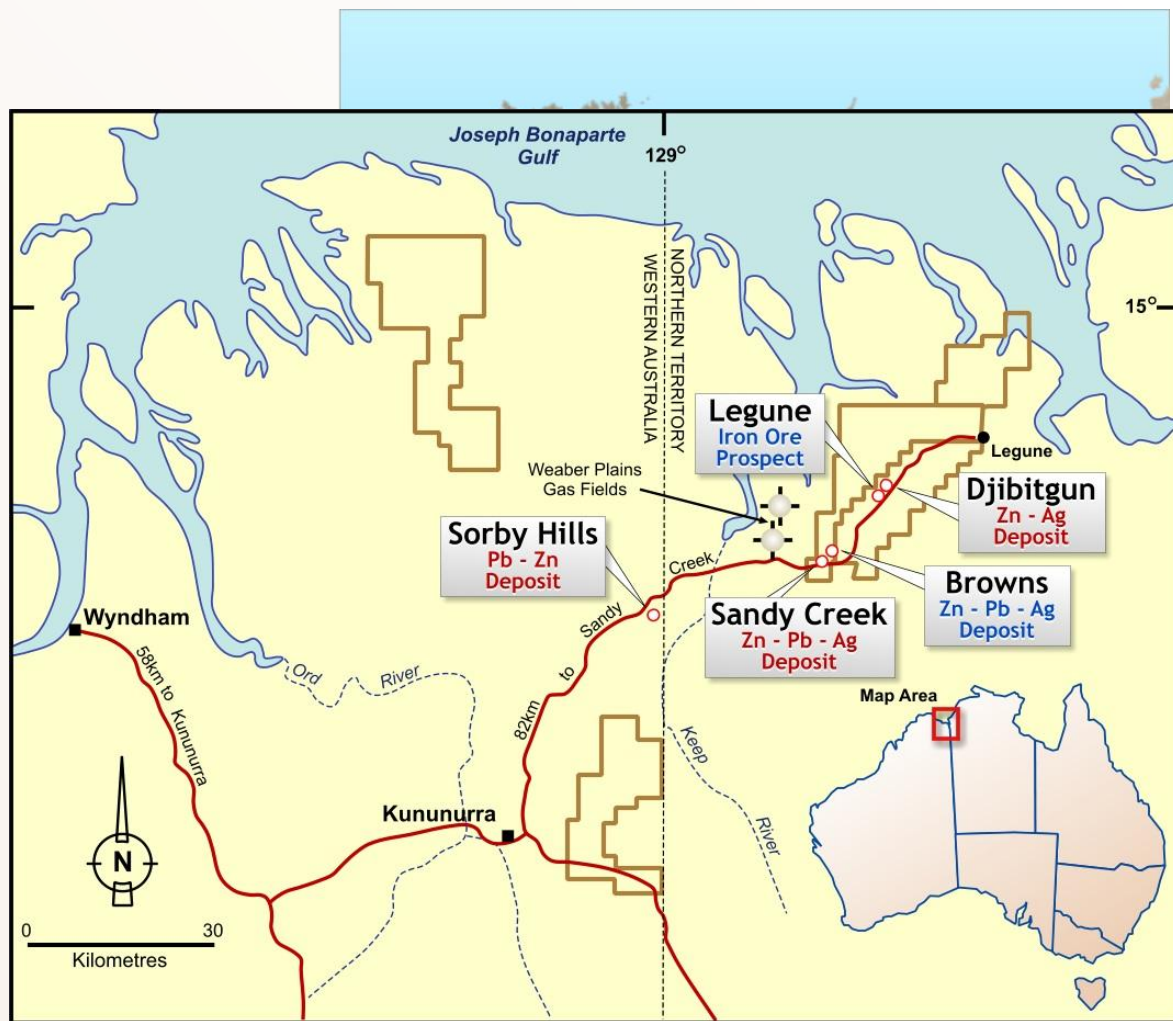
**Emerging Base Metal**

**District**

• 2000 km<sup>2</sup> land holding

• Close to infrastructure and ports

• Numerous base metal occurrences



# Manbarrum Project



## Similarities to World Class MVT districts:

- Large tonnage
- Shallow depth
- forming on basin edge
- Structural controls
- Scope for numerous deposits



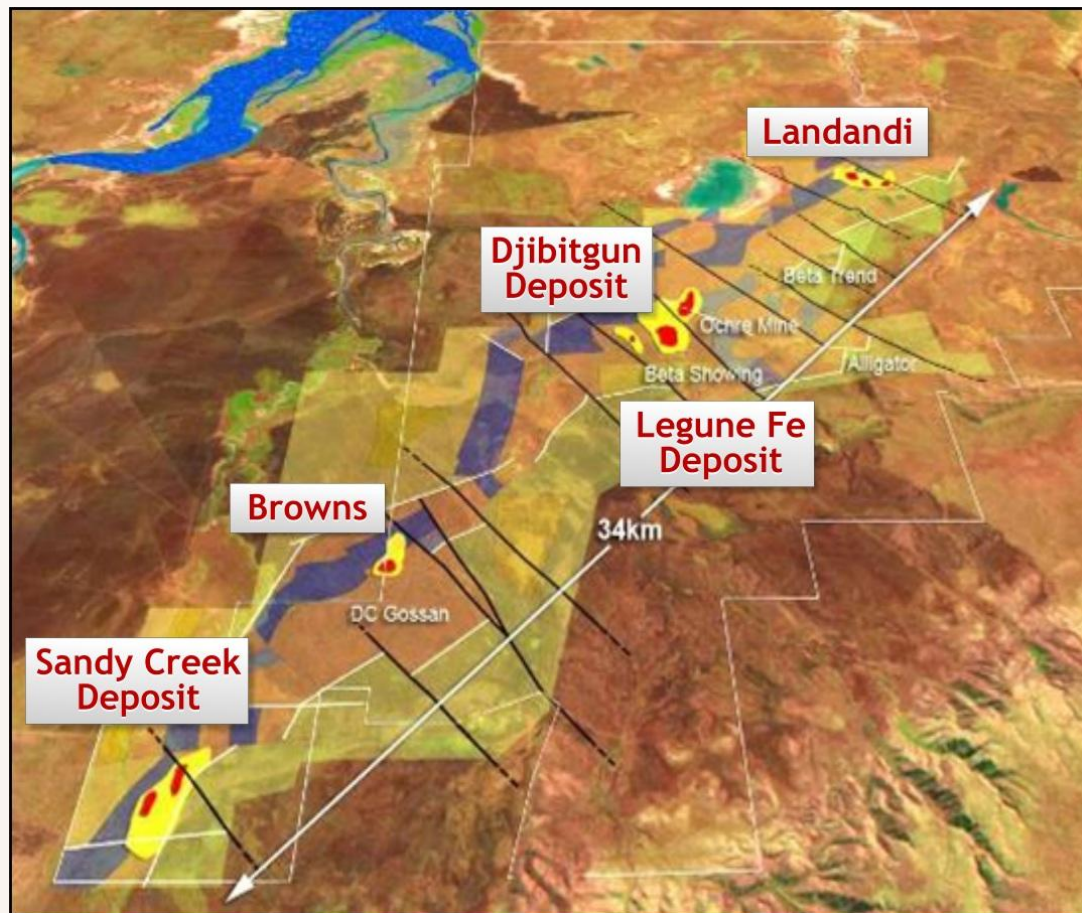


# Manbarrum Project



## Exploration

- > A\$15M on exploration:
- Two deposits located:  
Sandy Creek and Djibitgun:
- +36Mt resource inventory
- **New discovery at Browns in 2009**
- Numerous high-quality targets remain to be tested



For personal use only

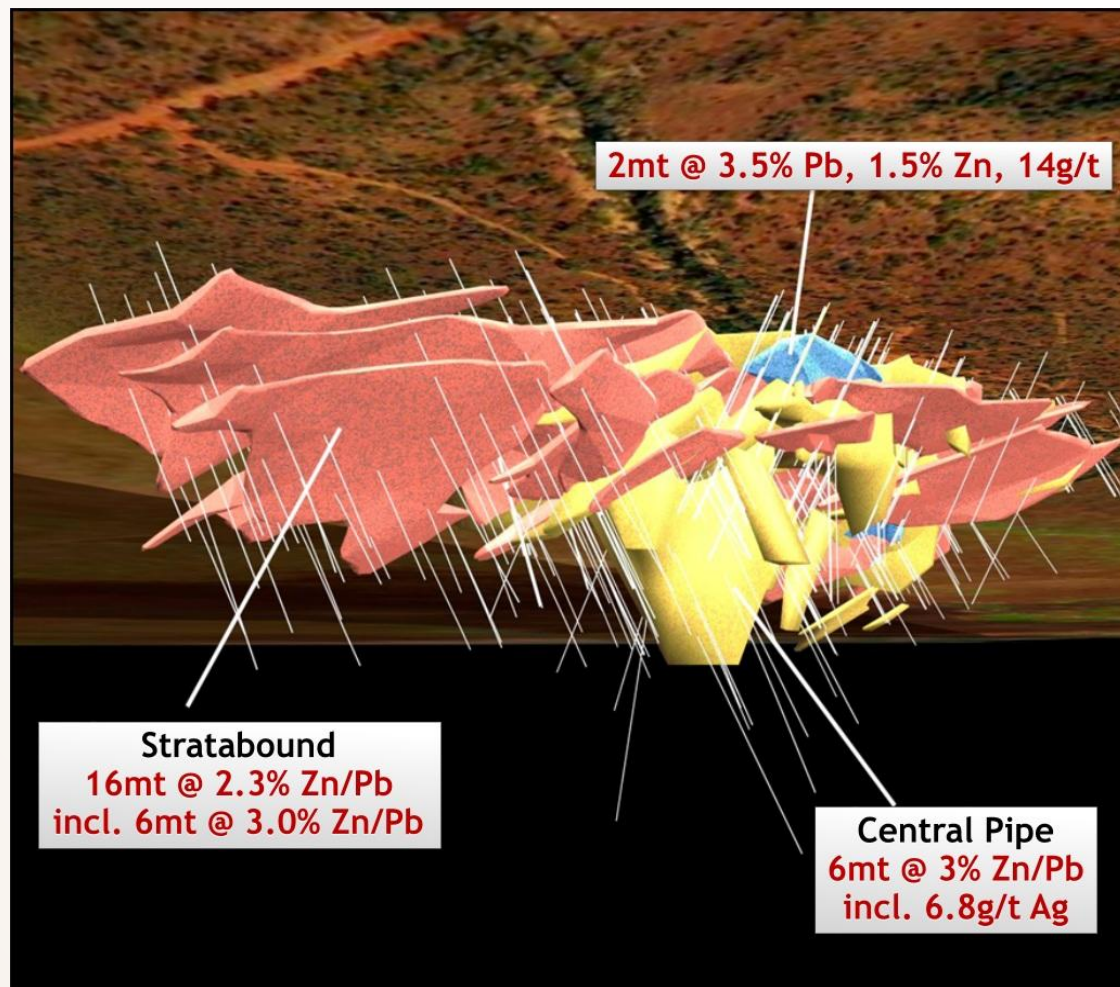


# Sandy Creek Deposit



## JORC Inferred / Indicated

- Current resource Stratabound only - **Excludes central pipe**
- New drilling confirmed grades in pipe zone
- Metallurgical work positive
- Shallow deposit – open cut
- No environmental issues



# Djibitgun Deposit

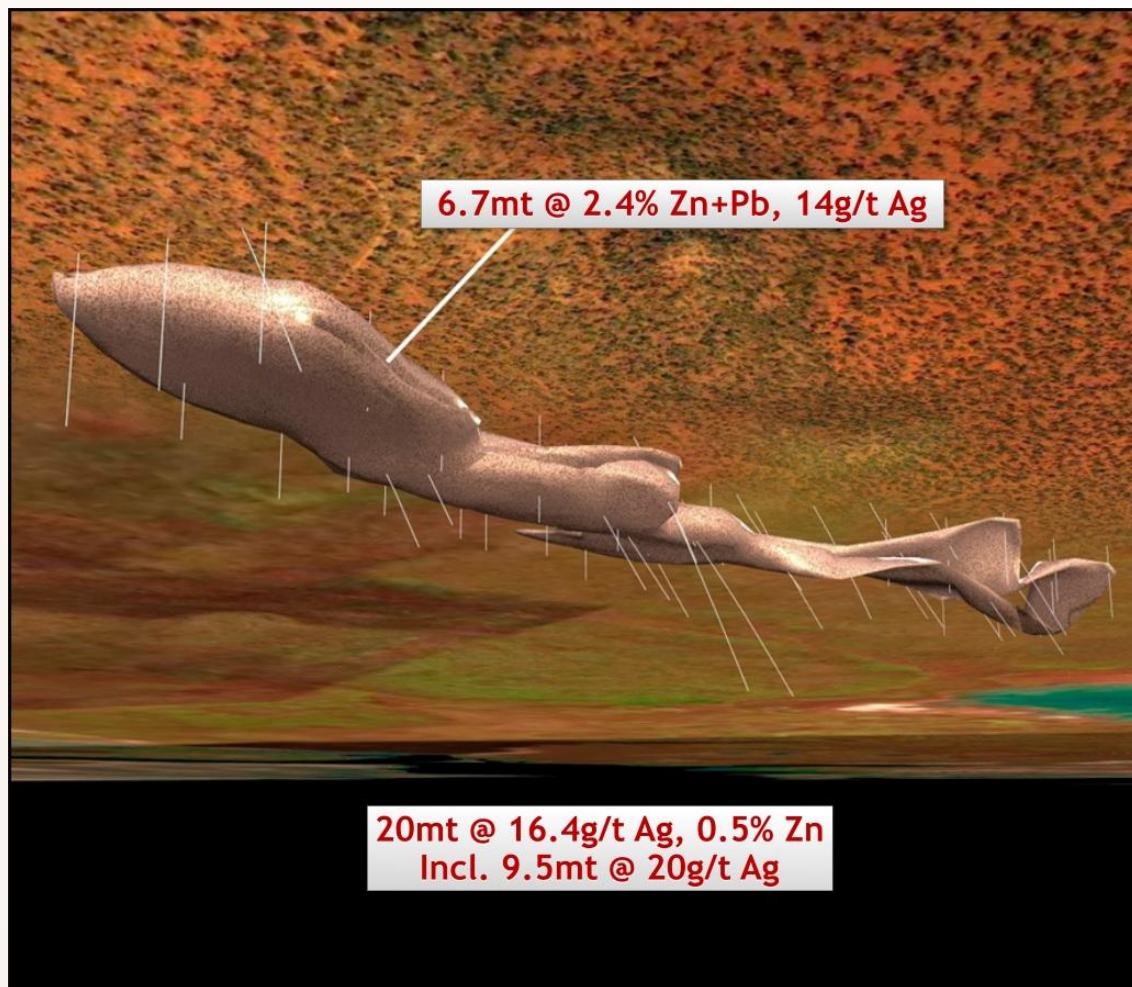


## JORC Inferred

First pass drilling

Huge potential to increase tonnage and grade

Shallow deposit



For personal use only



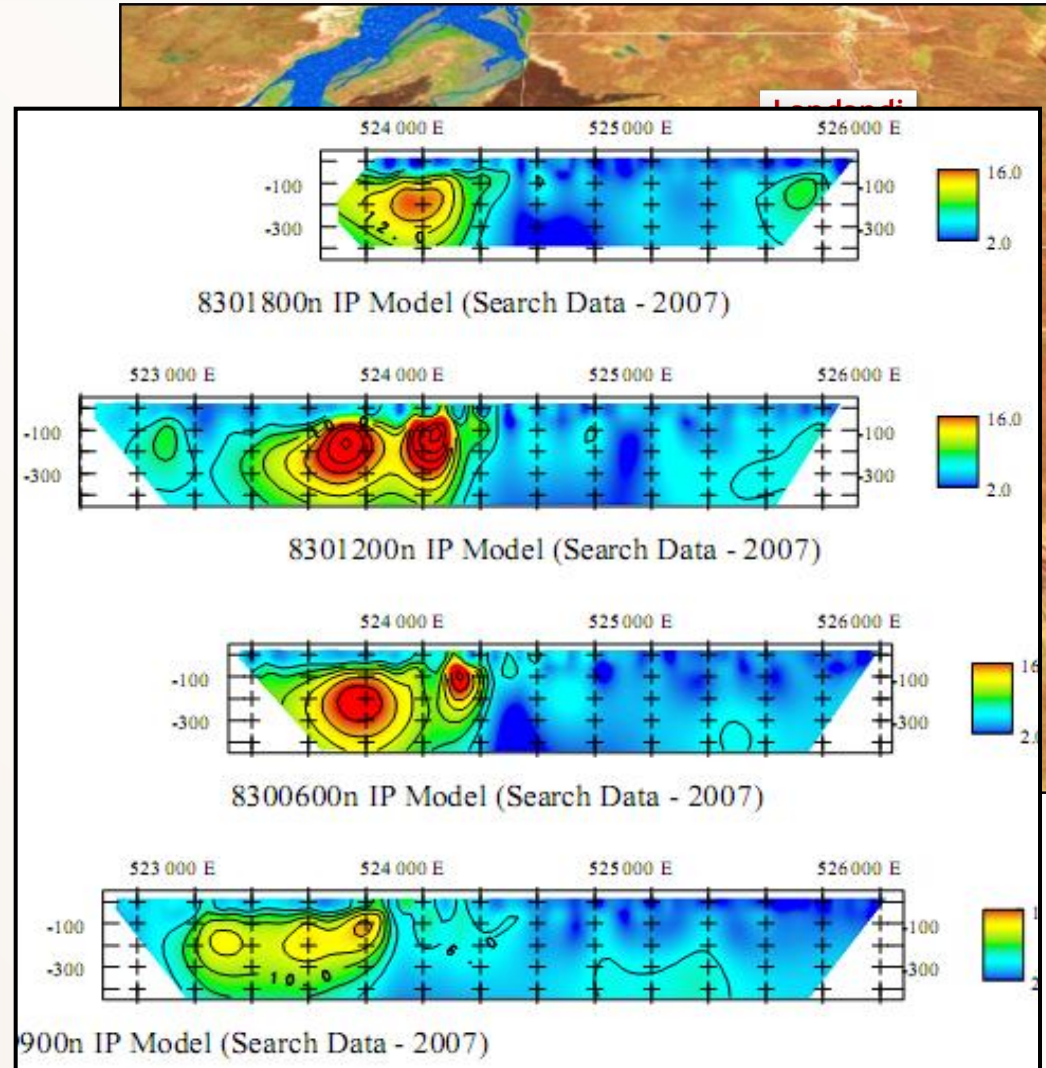
# Browns Prospect



For personal use only

## Large MVT target

- Largest IP target in area
- Diamond drilling confirms Zn / Pb mineralisation
- Assay results awaited

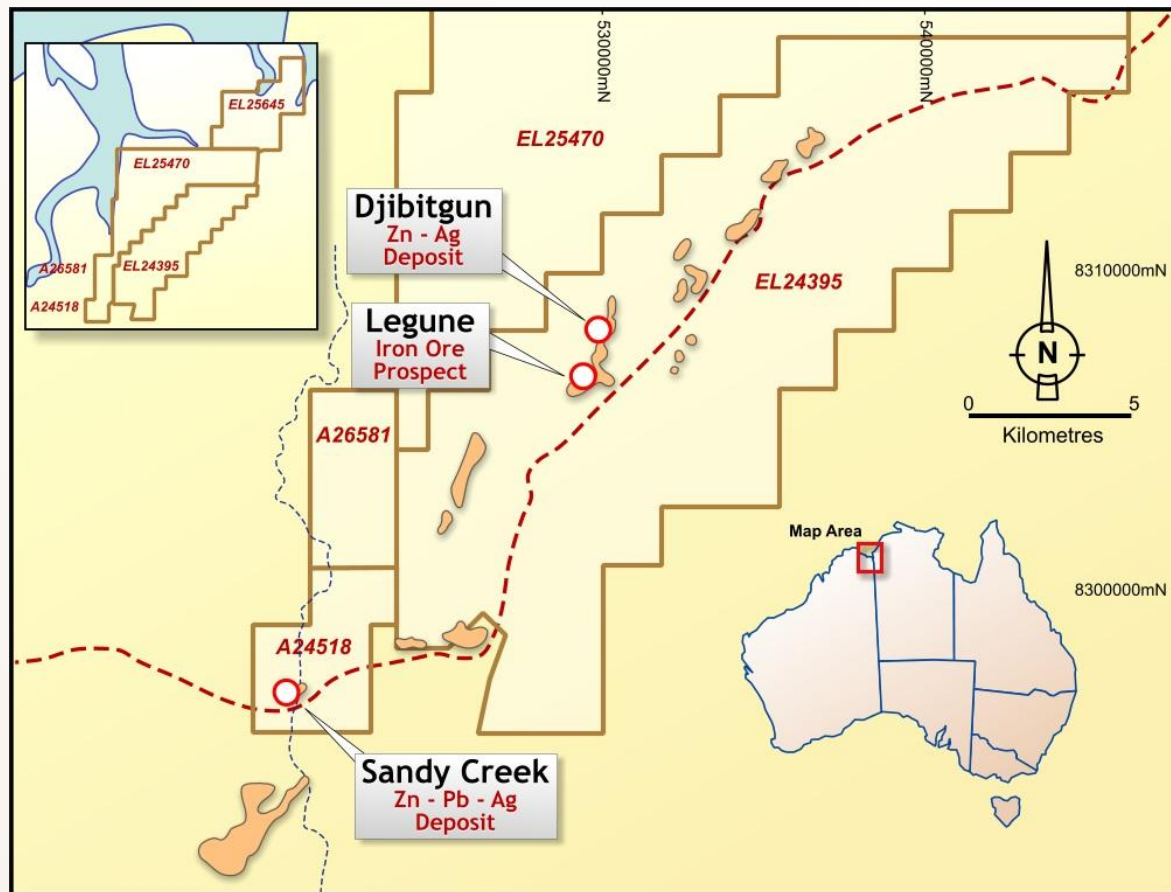


# Legune Prospect



## Hematite Prospect

- 2km South of Djibitgun
- Close to Road
- Access approved for drilling



For personal use only



# Manbarrum Project



For personal use only

## Exploration

- Hematite outcrop
- 900m x 500m
- Hematite zone on hill
- New Hematite outcrops on hill sides

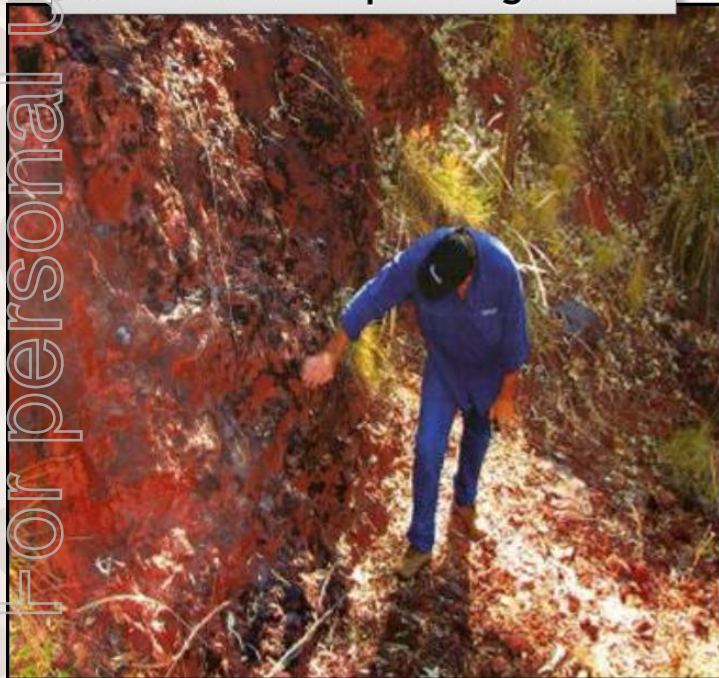


# Manbarrum Project



- Legune Hematite Prospect  
25m Vertical Hematite Section exposed  
Assays > 60% Fe

Hematite outcrop on Legune Hill



Niton XRF



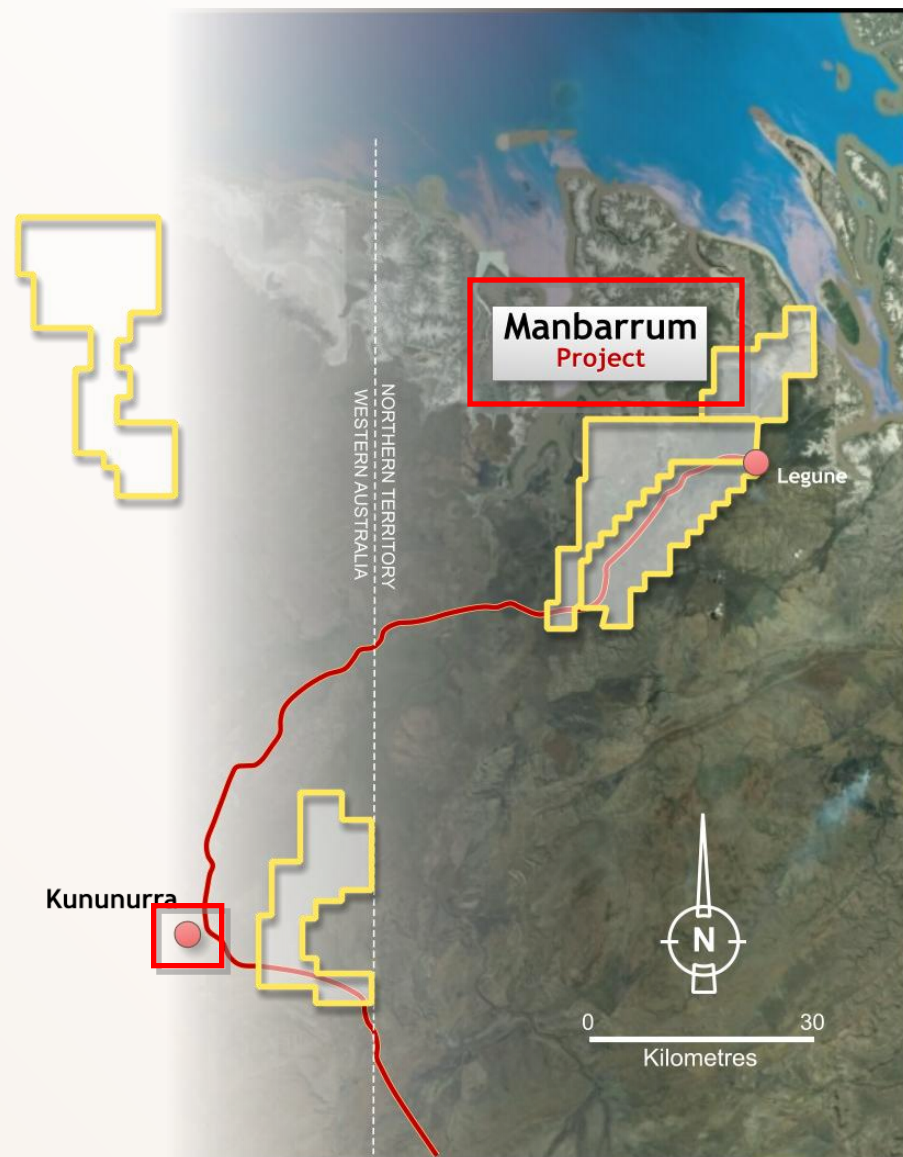
Hematite outcrop off hill



# Manbarrum Project



- Excellent infrastructure  
Kununurra Town – 80km



For personal use only



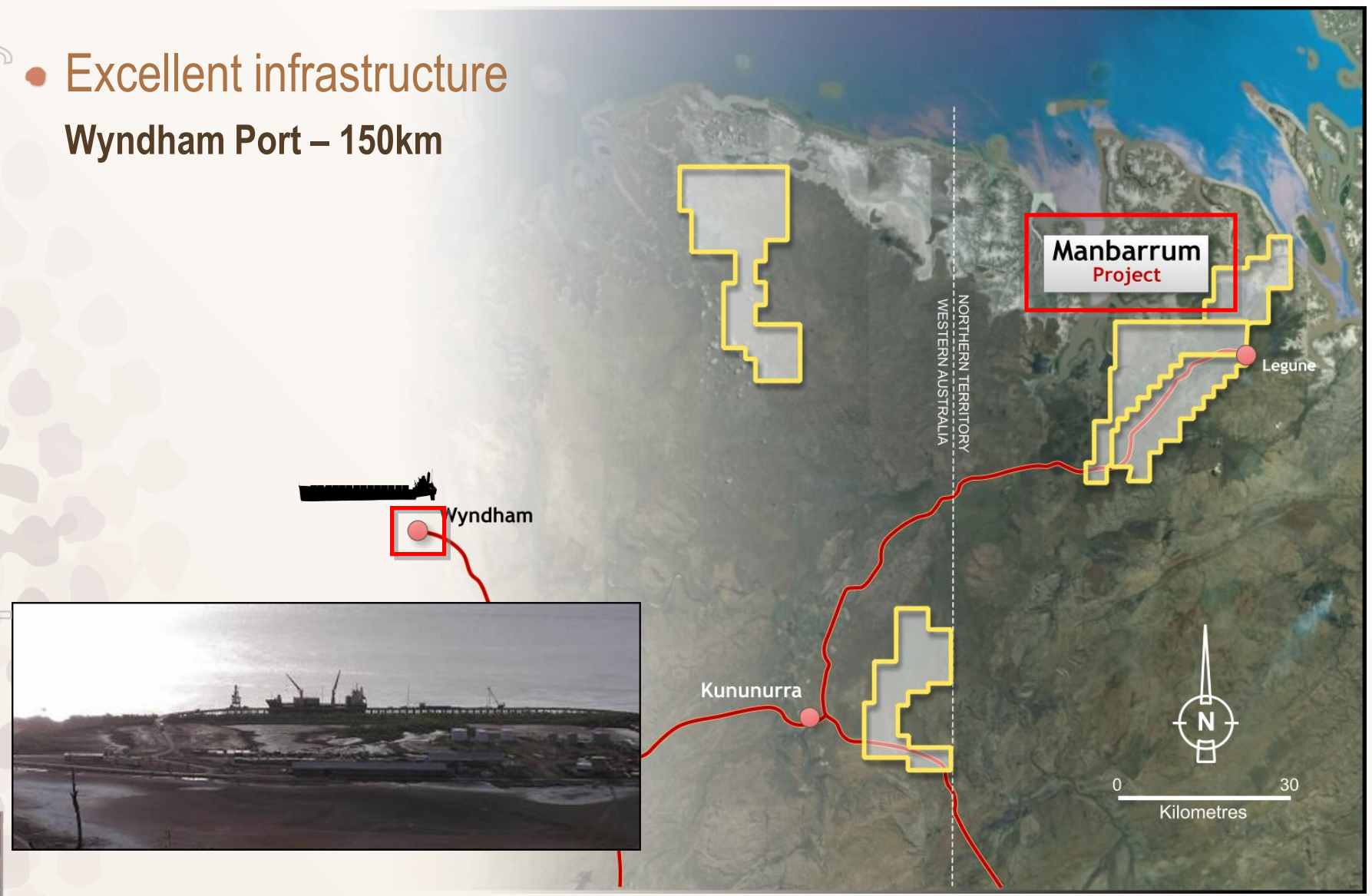


# Manbarrum Project



- Excellent infrastructure  
Wyndham Port – 150km

For personal use only

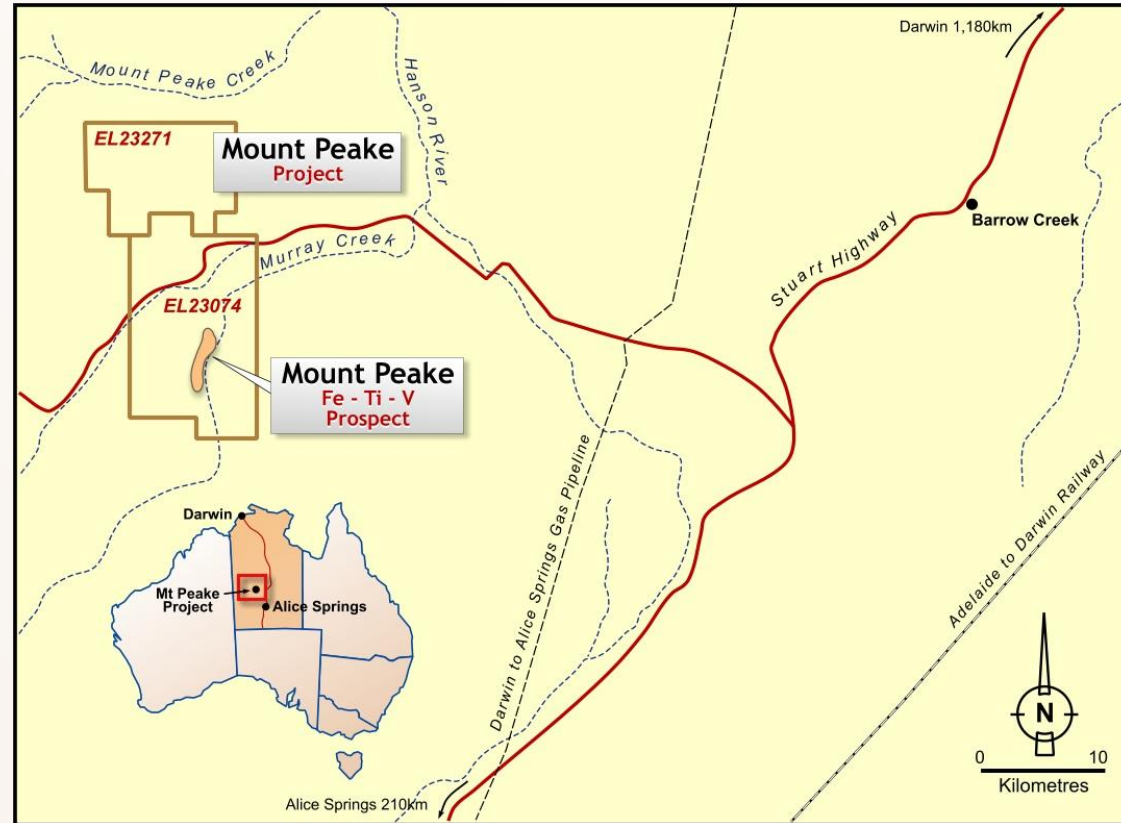


# Mount Peake Project



## New Iron-Vanadium-Titanium discovery

- Good location
- Underexplored area
- potential for Cu/Ni /PGM sulphides at depth



For personal use only

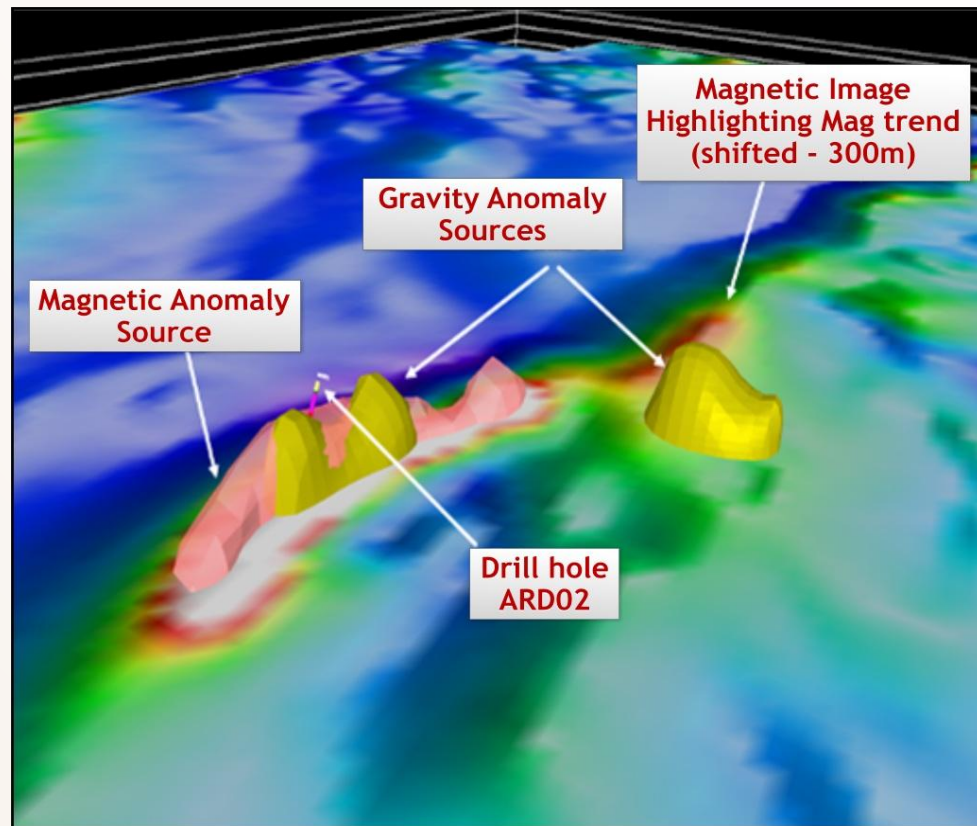
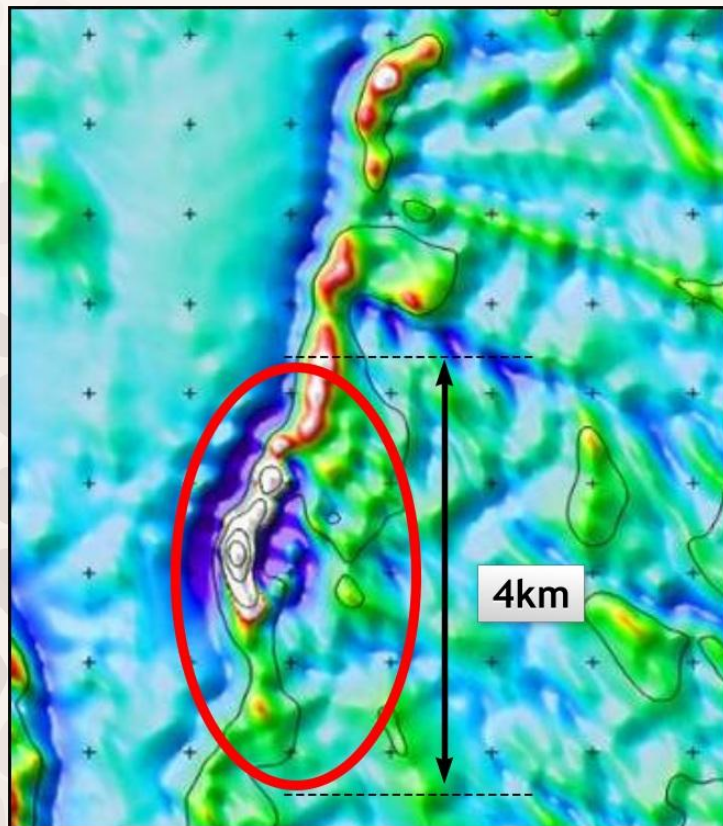


# Mount Peake Project



## Large Geophysical Target

- Magnetic anomaly 9km x 700m
- Coincident gravity anomalies



For personal use only



# Mount Peake Project



## Completed to date:

- diamond and RC drilling
- Detailed gravity and heli-mag survey
- ❑ Metallurgical Test work Positive
- ❑ Initial Scoping Study Positive



For personal use only

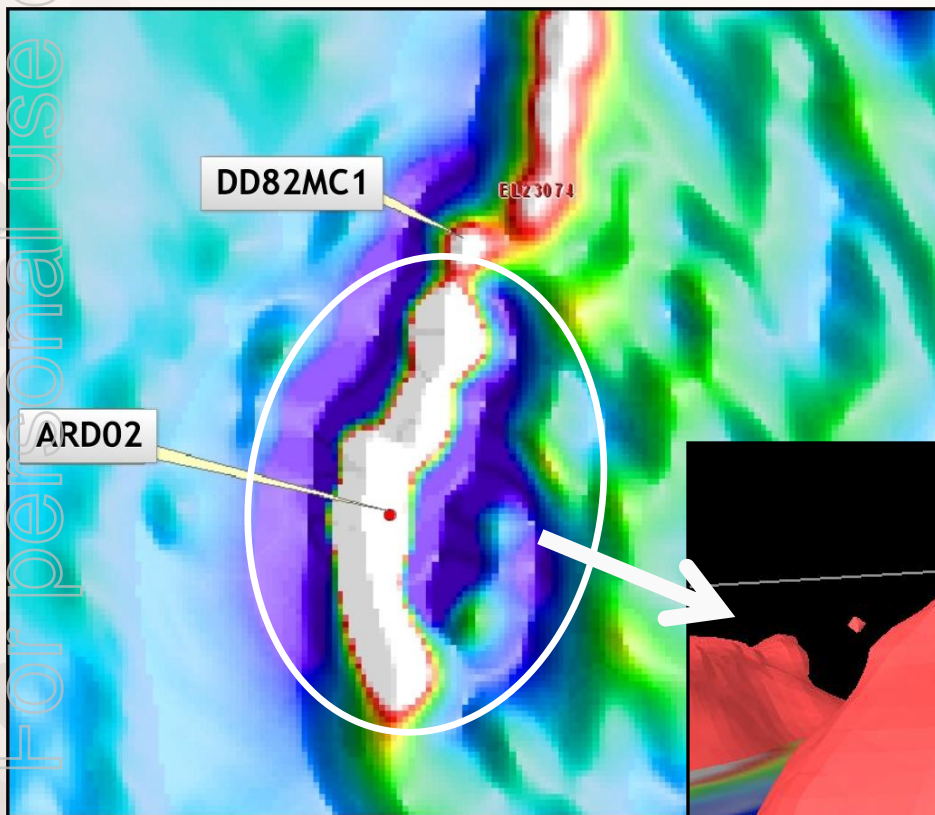


# Mount Peake Project

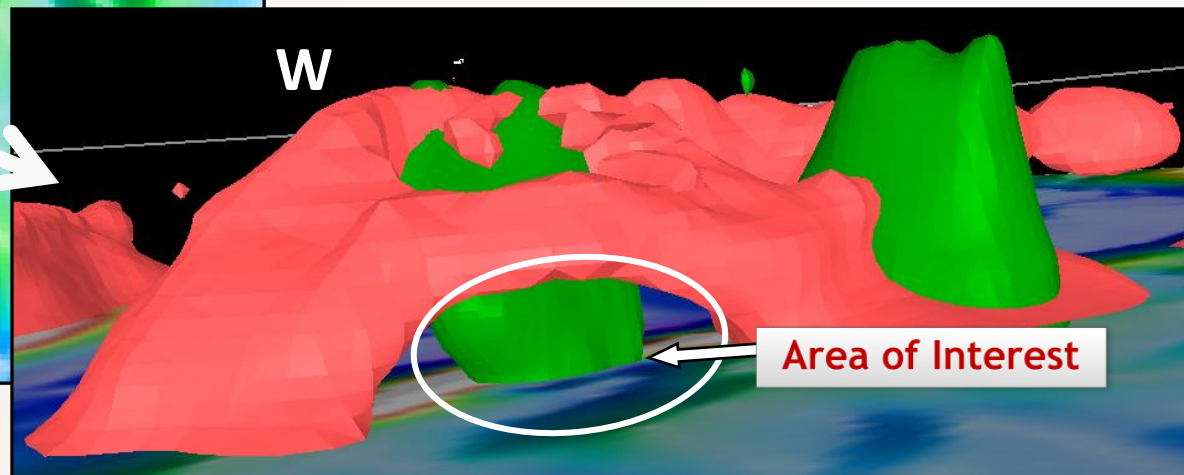


## Magnetic and gravity targets

- Possible layered system



- 3D Modelling shows dome
- low magnetic centre
- Gravity anomalies on edge

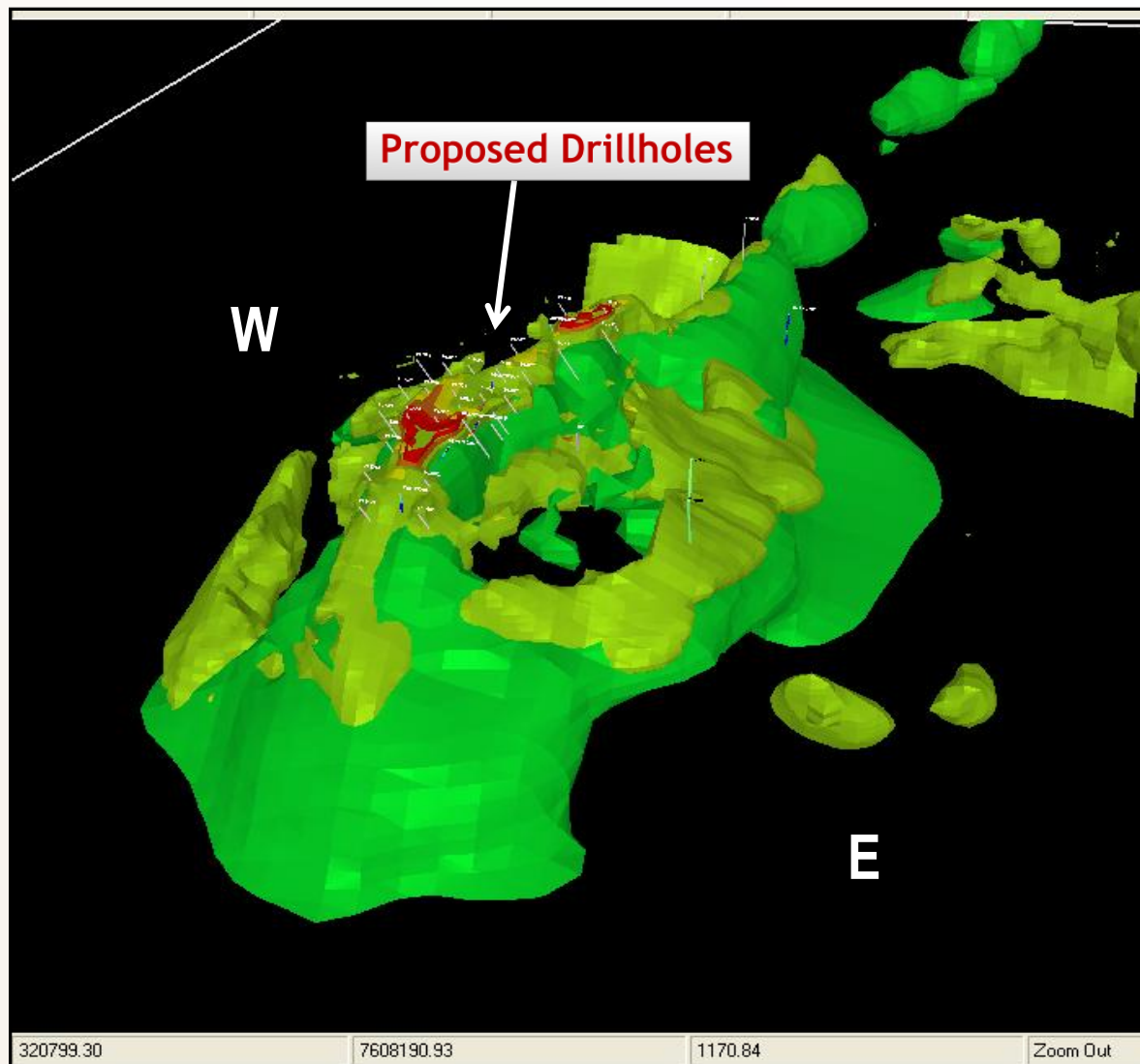


# Mount Peake Project



For personal use only

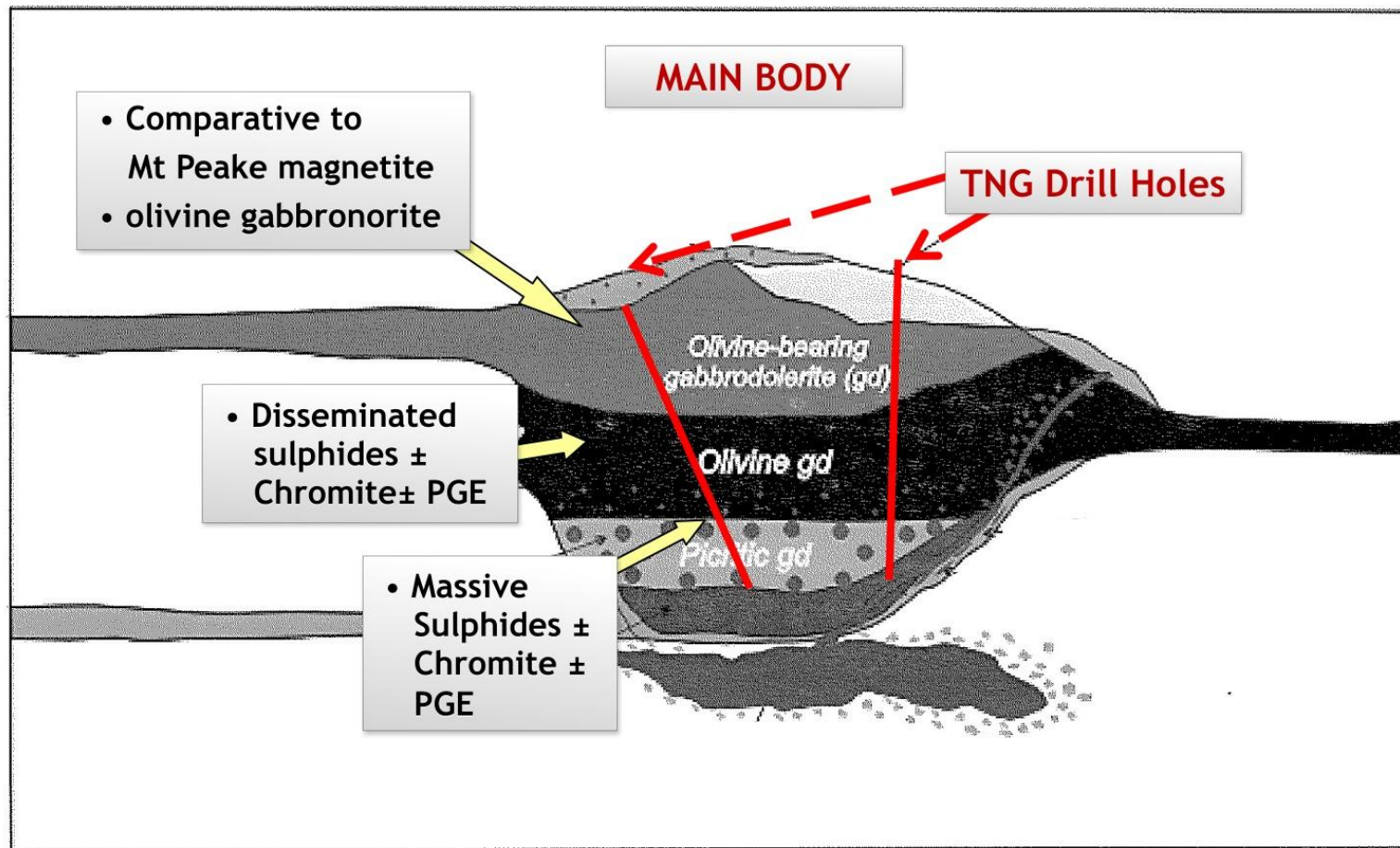
- 3D Model:
- Domal effect
- High magnetic cap



# Mount Peake Project



For personal use only



- Schematic section of layered mafic complex
- Drilling planned to commence in October

Area of Interest



# Mount Peake Project Potential



- Large underexplored area
- High potential to increase tonnage and grade
- Potential >500mt resource
- Metallurgical and scoping studies show positive
- Potential layered Mafic system for Ni /Cu/ PGM targets

For personal use only





# TNG - The Next Stage.....



- **Expand and develop key Mineral Resources and asset base**
- **Secure strategic JV Partner**
- **Assess new acquisition opportunities**



For personal use only



# Corporate Summary

- **Chairman** John W Barr
- **CEO** Paul E Burton
- **Non-Exec Director** Neil G Biddle
- **Non-Exec Director** Edward Fry

- 
- **Shares on Issue** 258m  
ASX: TNG
  - **Cash on hand** \$4.7M as at 30 Jun 2009

- 
- **Major Shareholders**

Directors	7.77%
RAB	4.9%
CBH	6.3%

- 
- **Top 20 Shareholders hold 42% of Issued Capital**



For personal use only



# Corporate Contacts

- **Address:** Level 1, 282 Rokeby Road Subiaco WA 6008  
PO BOX 1126, Subiaco WA 6904
- **Telephone:** +61 8 9327 0900
- **Fax:** +61 8 9327 0901
- **Email:** [corporate@tngltd.com.au](mailto:corporate@tngltd.com.au)
- **Website:** [www.tngltd.com.au](http://www.tngltd.com.au)
  
- **Share Registry:** Computershare Investor Services  
Level 2 Reserve Bank Building , 45 St Georges Terrace,  
Perth WA 6000

- **CONTACTS**

Neil G Biddle: *Director* [n gb@tngltd.com.au](mailto:n gb@tngltd.com.au)

John W Barr: *Chairman* [jwb@tngltd.com.au](mailto:jwb@tngltd.com.au)

Paul E Burton: *CEO* [peb@tngltd.com.au](mailto:peb@tngltd.com.au)



For personal use only



# TNG LIMITED



*Resources Rising Stars – September 2009*

Paul Burton – CEO