



ASX ANNOUNCEMENT
ASX Code: BDR

30 September 2009

ANGLO AMERICAN AIRBORNE SPECTREM SURVEY
COMMENCES, SKIRMISH HILL – WEST MUSGRAVE

Beadell Resources Limited (“**Beadell**”) is pleased to announce that Anglo American Exploration (Australia) Pty Ltd (“**Anglo American**”) have commenced a major airborne electromagnetic “SPECTREM” survey in the West Musgrave area of Western Australia (Figure 1). The survey will cover most of Beadell’s 560 km² Skirmish Hill tenements (Figure 2) which are the subject of a recently announced Option and Joint Venture Agreement with Anglo American (See ASX release 1 July 2009).

Under the Joint Venture agreement Anglo American have the exclusive right to earn an initial 51% equity in the project by expending \$1 M on exploration within three years and a further 24% by the additional expenditure of \$2 M in a further 4 year period.

The Skirmish Hill project encompasses three large contiguous granted tenements 80 km south-east of BHPB’s Nebo-Babel nickel deposit (Figure 3). The project is considered highly prospective for nickel sulphide, platinum group elements and copper gold mineralisation and is essentially unexplored by modern exploration techniques.

The Spectrem” system is a highly-successful proprietary airborne electromagnetic technique used by Anglo American in other regions of the world to detect metalliferous sulphide bodies at or beneath the earth’s surface. This is the first time the Spectrem system has been used in Australia.

Follow up ground-based exploration of anomalies generated from the Spectrem survey will include Anglo American’s proprietary EM “SQUID” system which has the capacity to detect electrical conductors associated with massive sulphide mineralisation at substantial depths.

Beadell looks forward to developing a strong and successful relationship with Anglo American in the West Musgrave where both companies are actively exploring.



Figure 1. Anglo American's proprietary "Spectrem" EM system.

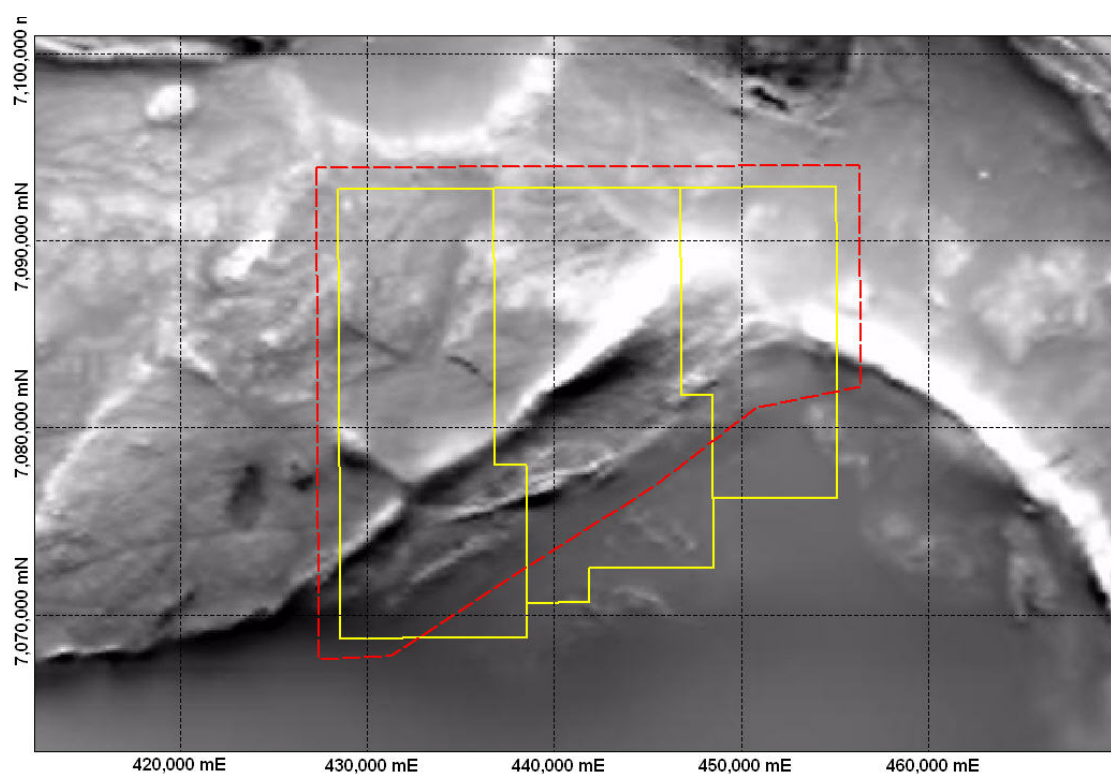


Figure 2. Aeromagnetic image showing area to be flown (red dashed line) and Skirmish Hill tenements (yellow blocks).

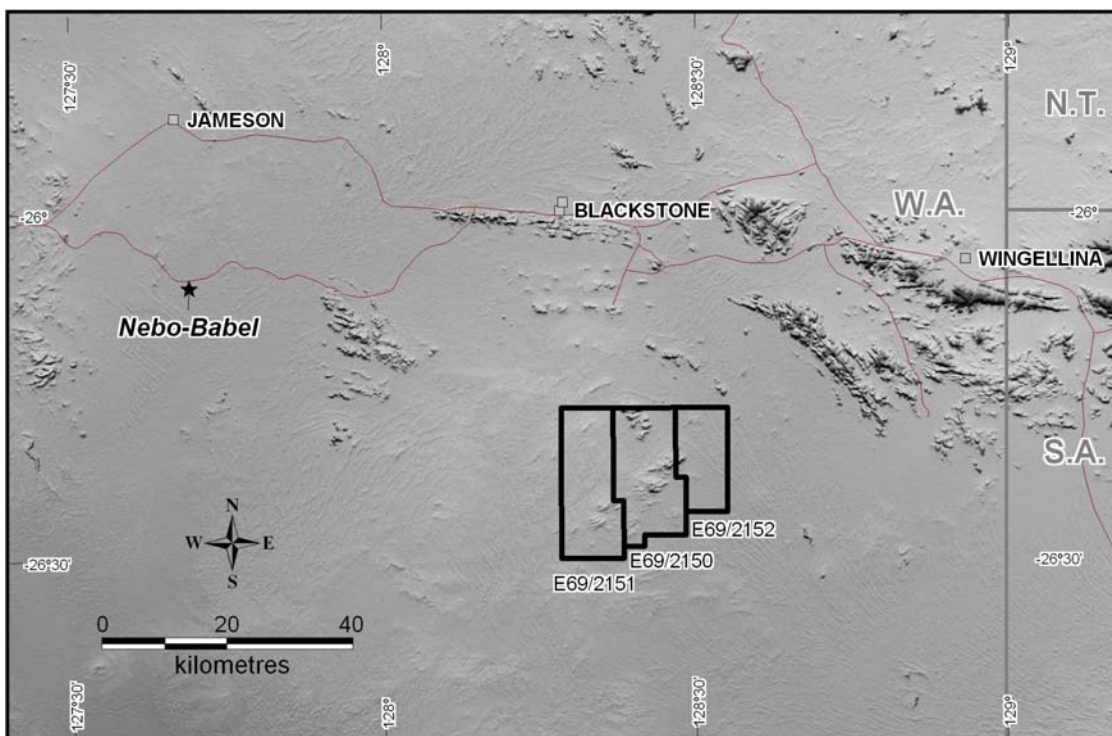


Figure 3. Digital terrain model Location plan of Skirmish Hill tenements in the West Musgrave.

For further information please contact:

Peter Bowler | Managing Director
T: +61 8 9429 0801
peter.bowler@beadellresources.com.au

Robert Watkins | Executive Director – Exploration
T: +61 8 9429 0802
rob.watkins@beadellresources.com.au

Competency Statement

The information in this report relating to Exploration Results and Mineral Resources is based on information compiled by Mr Robert Watkins who is a member of the Australian Institute of Mining and Metallurgy and has sufficient exploration experience which is relevant to the various styles of mineralisation under consideration to qualify as a Competent Person as defined in the 2004 Edition of the 'Australian Code for Reporting of Exploration Results, Mineral Resources and Ore Reserves'. Mr Watkins is a full time employee of Beadell Resources Ltd. Mr Watkins consents to the inclusion in the report of the matters based on his information in the form and context in which it appears.