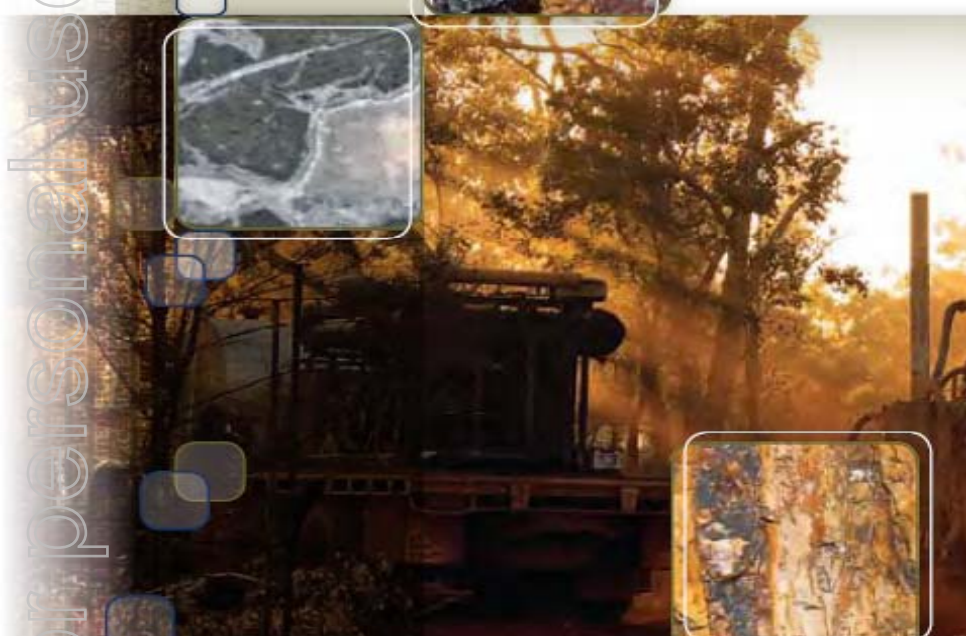


For personal use only



**YTC**  
RESOURCES LIMITED



# Annual General Meeting

30 November 2009

# Disclaimer

## Forward Looking Statements

This presentation includes forward-looking statements that have been based on the Company's current expectations about future events. These forward-looking statements are, however, subject to risks, uncertainties and assumptions that could cause actual results, performance or achievements to differ materially from the expectations expressed or implied in such forward-looking statements.

The Company does not make any representations and provides no warranties concerning the accuracy of such forward-looking statements, and disclaims any obligation to update or revise any forward looking statements based on new information, future events or otherwise except to the extent required by applicable laws.

## Competent Persons Statement

The information in this presentation that relates to Exploration Results is based on information compiled by Rimas Kairaitis, who is a Member of the Australasian Institute of Mining and Metallurgy. Rimas Kairaitis has sufficient experience which is relevant to the style of mineralisation and type of deposit under consideration and to the activity which he is undertaking to qualify as a Competent Person as defined in the 2004 Edition of the 'Australasian Code for Reporting of Exploration Results, Mineral Resources and Ore Reserves.'

Mr Kairaitis consents to the inclusion in this report of the matters based on his information in the form and context in which it appears.

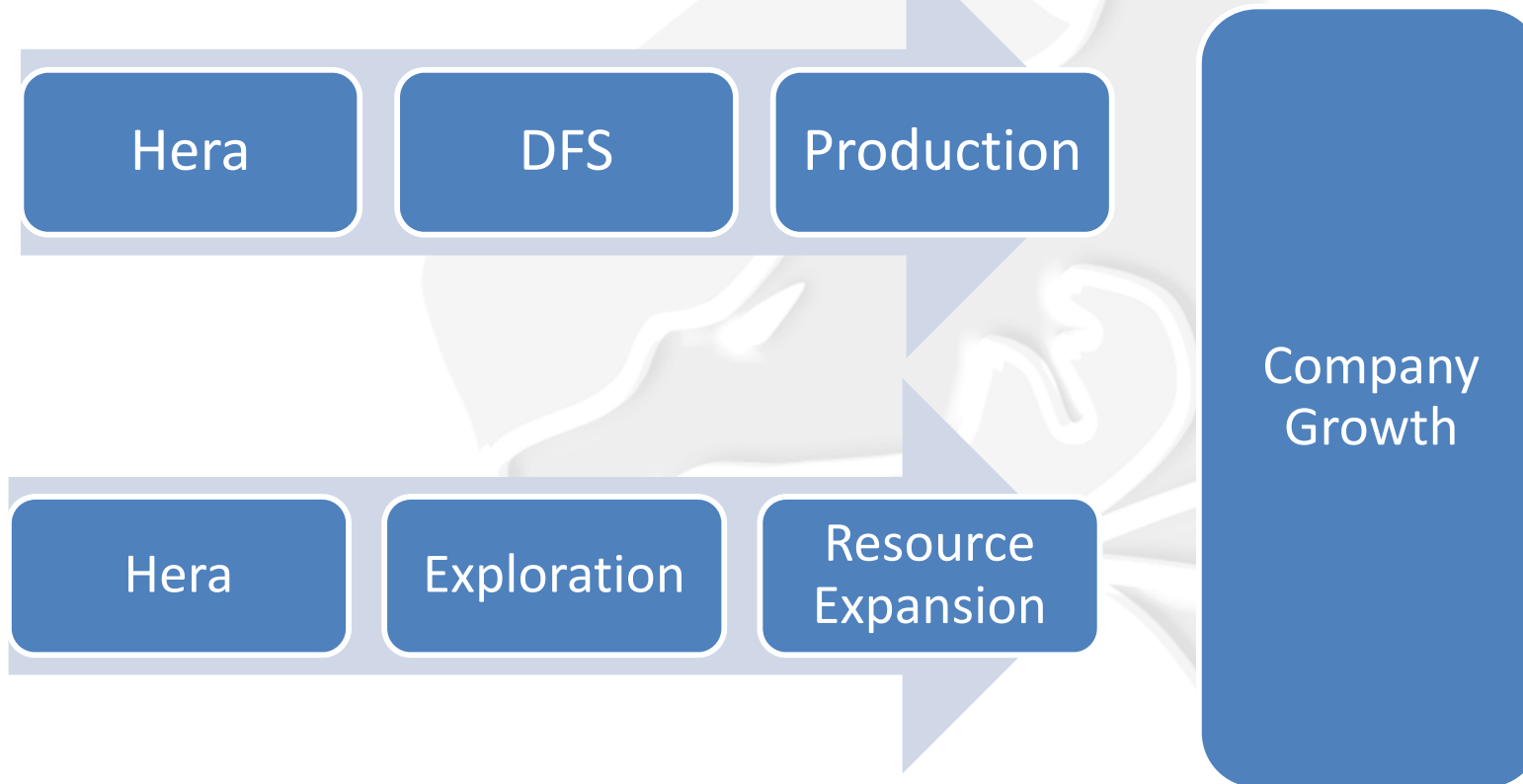
# Company Transformation

- The successful purchase of the Hera Gold Project and a successful \$25m Capital Raising represents the execution of the YTC Strategy.
- Hera purchase is the result of an exhaustive Australia wide assessment process.
- The Hera purchase and Capital raising is a major transformative event for your company, taking YTC from explorer to project development and ultimately to miner.
- YTC would like to acknowledge the continuing support of its largest shareholders, particularly the Yunnan Tin Group of China, for supporting this significant company expansion.
- YTC is now well funded and advancing a quality, high grade gold & base metal project through a Definitive Feasibility Study ('DFS') in a strong gold market.
- YTC has commenced a parallel exploration strategy to expand the existing Hera resource and test for a major 'Cobar Style' gold-base metals deposit at depth and/or along strike.



# Hera Strategy

- Hera to add to shareholder value through the parallel DFS & Exploration programmes



For personal use only

# Summary Financials

- YTC is well funded with a current cash position of \$12.8m (before creditors)
- Board approved Exploration Budget to June 2010 of \$2m
- Board approved DFS budget to June 2010 of \$4.6m.



For personal use only

- GR Engineering Services appointed as lead Consultant to the DFS
- Metallurgical test work underway

**DF – Hera Project Manager**

**GRES – Lead Consultant**

**Geology & Resources**  
YTC

**Mining**

Optiro – with GRES input

**Metallurgy**

Leo Consulting , Metcon & Gekko Systems

**Process Plant & Infrastructure**  
GRES

**Plant Civils, Hydrology & TSF**  
Coffey

QA/QC Audit  
Infill Drilling  
New Geological Interpretation  
New Resource Calculation & Ore Deposit Model  
External Audit

Mining  
Geotechnical Assessment  
Final Mine Design

Met Testwork  
Flow sheet optimisation  
Flow Sheet Design

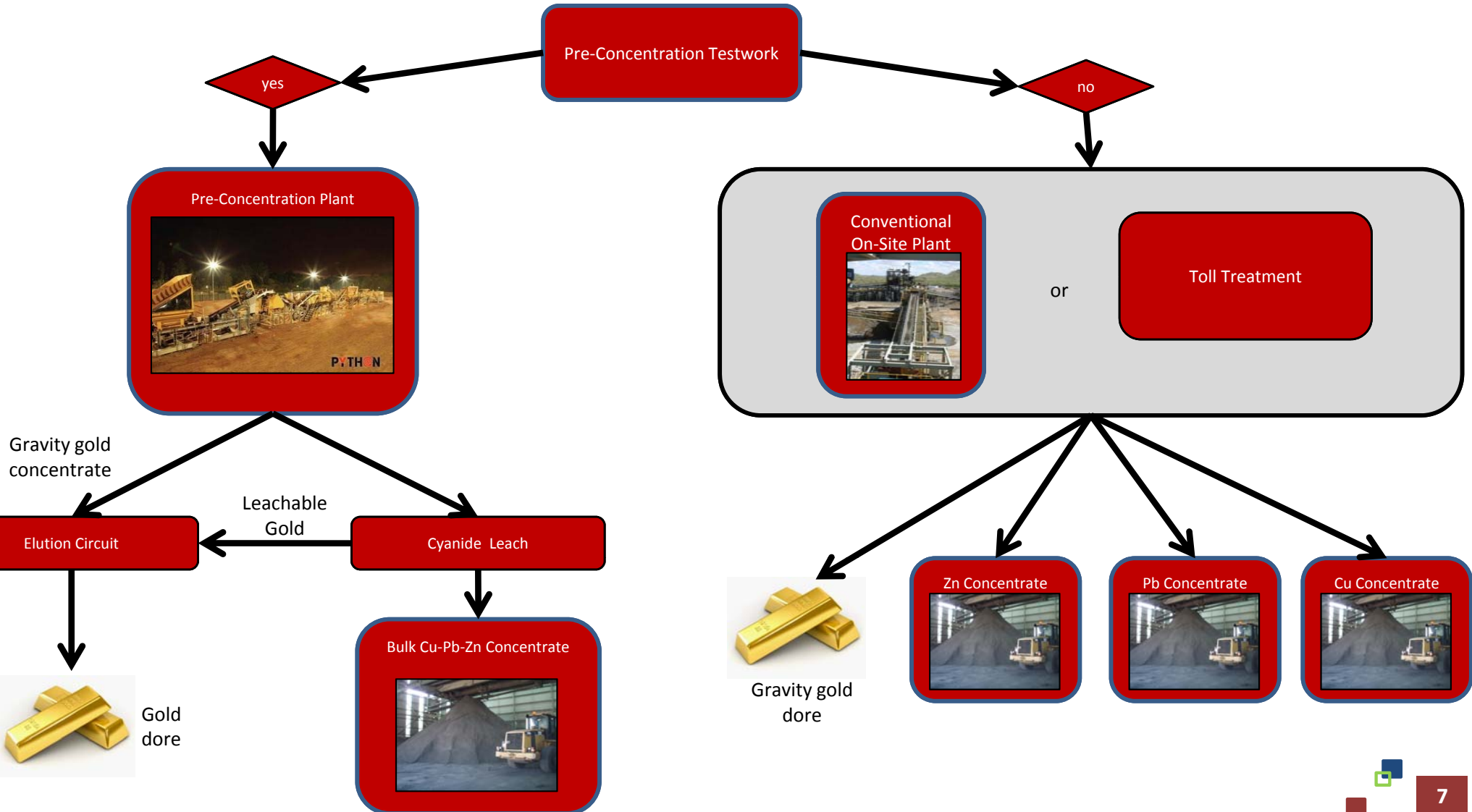
Process Plant, Services & Infrastructure

Plant & Infrastructure  
Geotechnical  
TSF  
Site Drainage  
ARD

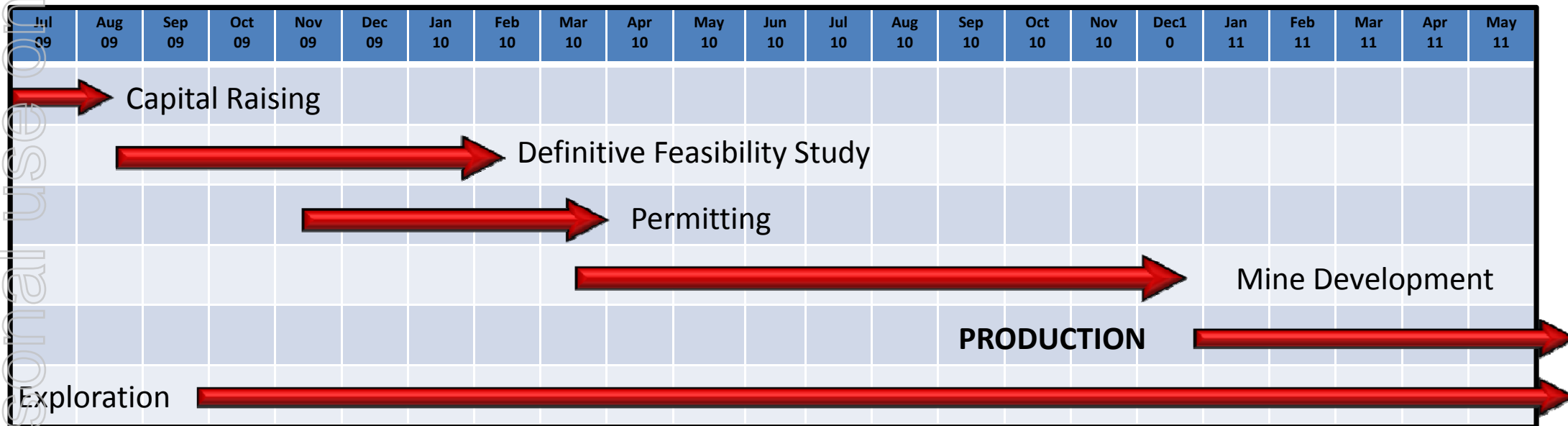
**Final Project Design**

# Hera DFS Pre-Concentration

For personal use only



# Hera Project Development Timeline



Time line depends on Board decision to commence decline ahead of DFS delivery

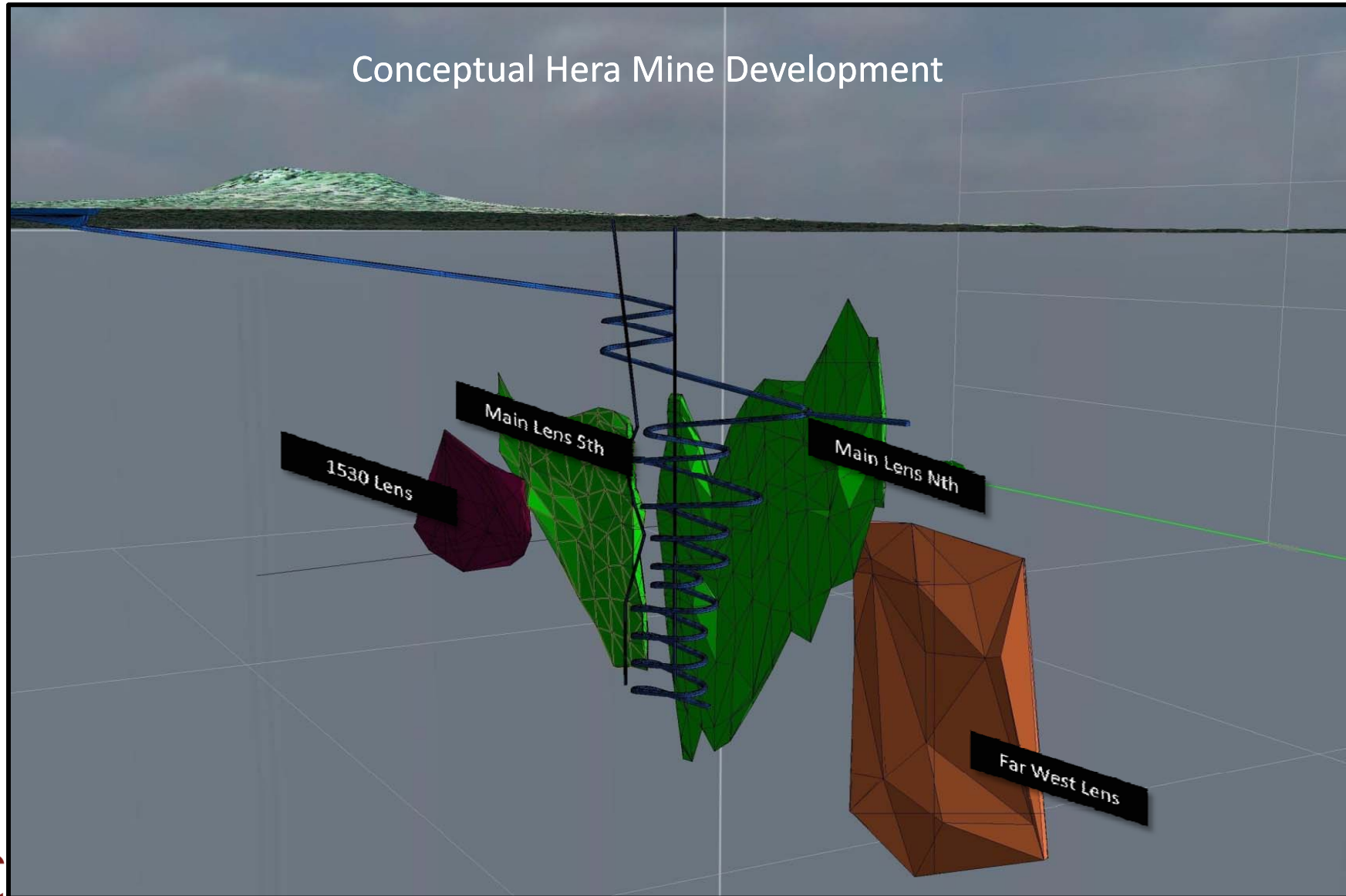
## Key DFS Decisions:

- Start Box Cut & Decline ahead of DFS Completion?
- Treatment Decision: Toll Treat or On-Site?



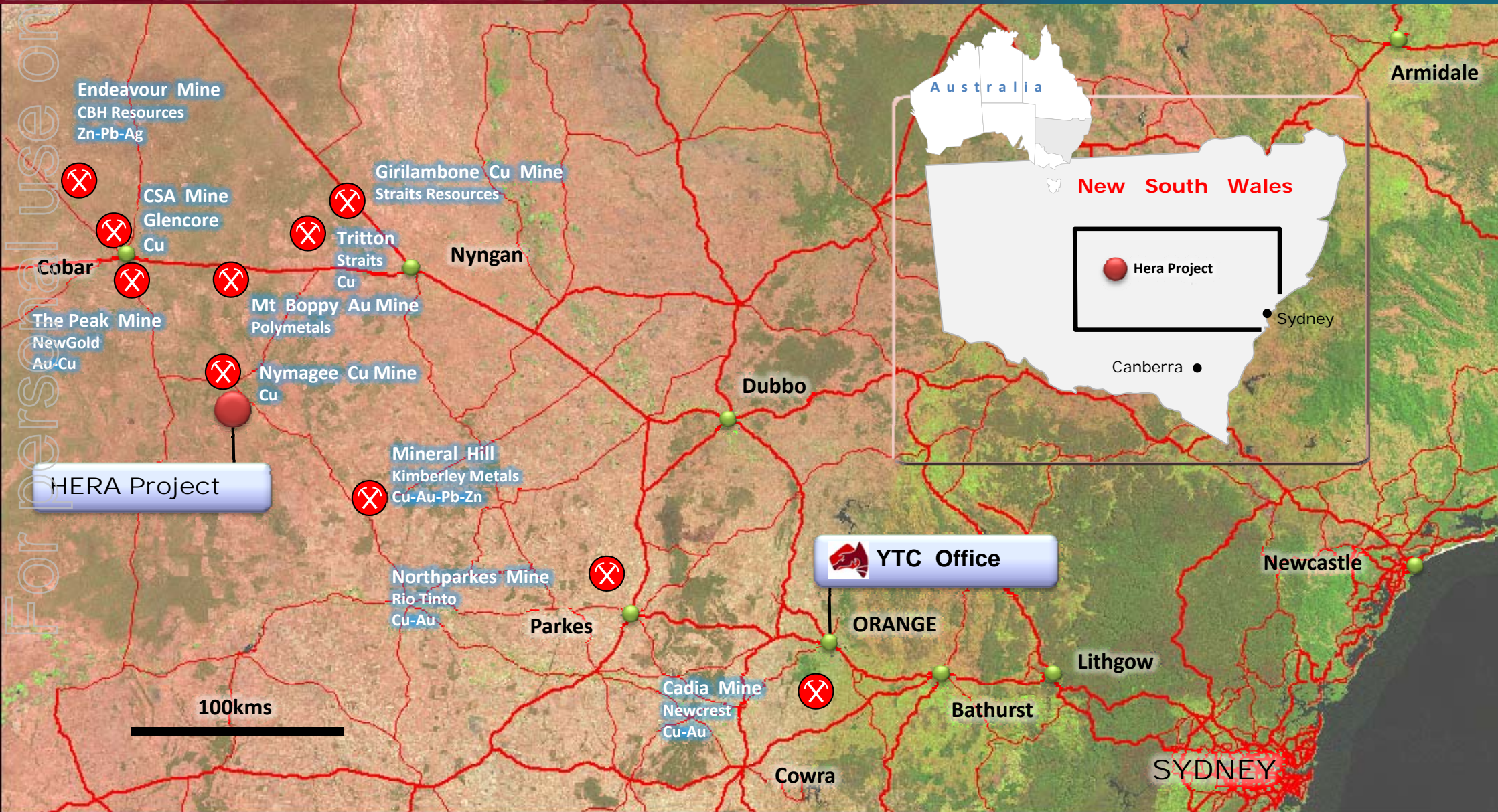
# Hera Project Development

For personal use only



# Hera Location

For personal use only



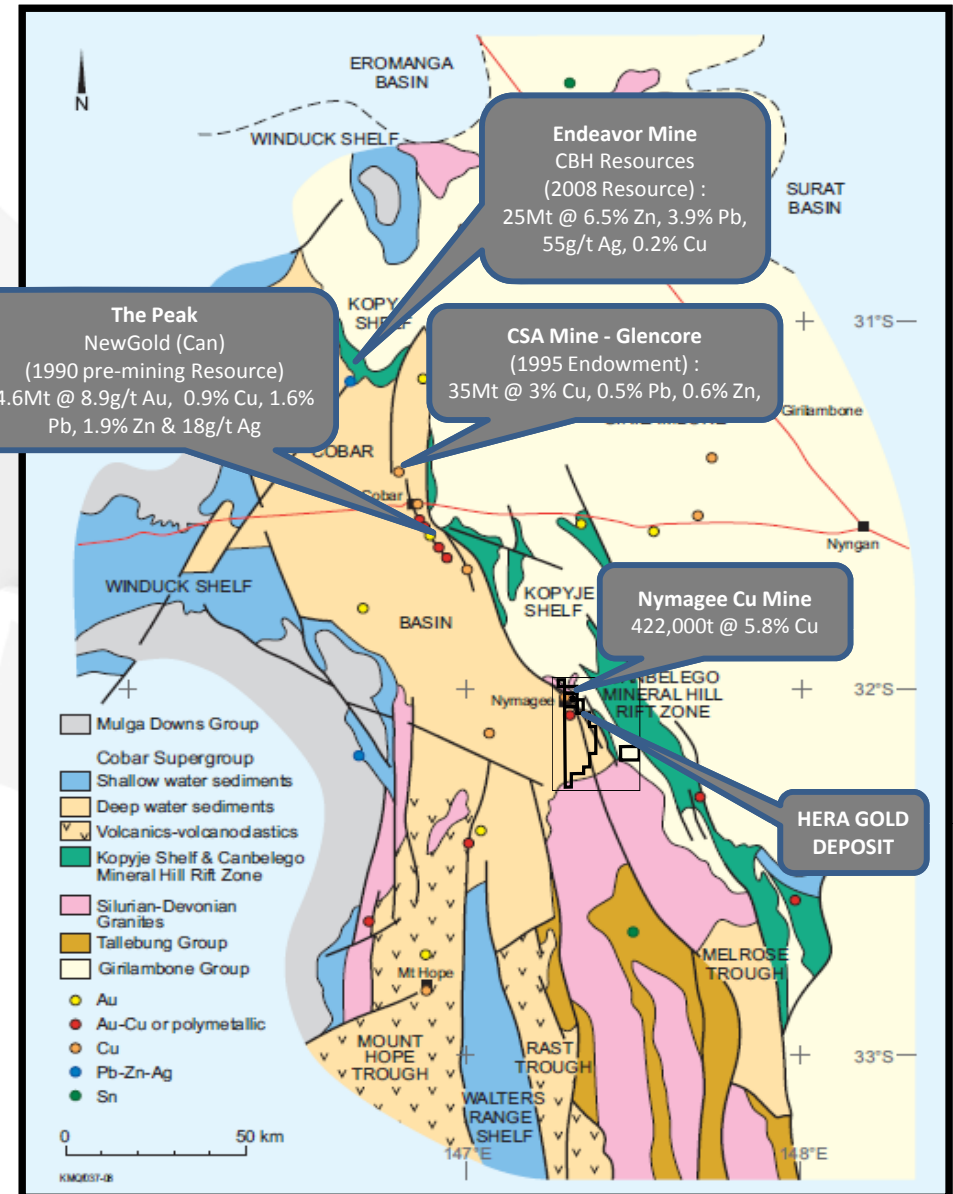
# Cobar Basin World Class Mineral Province

Hera Gold Project tenure covers ~24km strike of the eastern Cobar Basin

Eastern margin of the Cobar basin hosts a number of world-class mineral systems

CSA and 'The Peak – New Occidental' mineral systems have a semi continuous mining history of >100 years.

Huge exploration potential within the Hera Project tenements



For personal use only

# Hera Project Strike Potential

For personal use only

Hera Gold Project tenure covers  
~24km strike of the eastern Cobar  
Basin

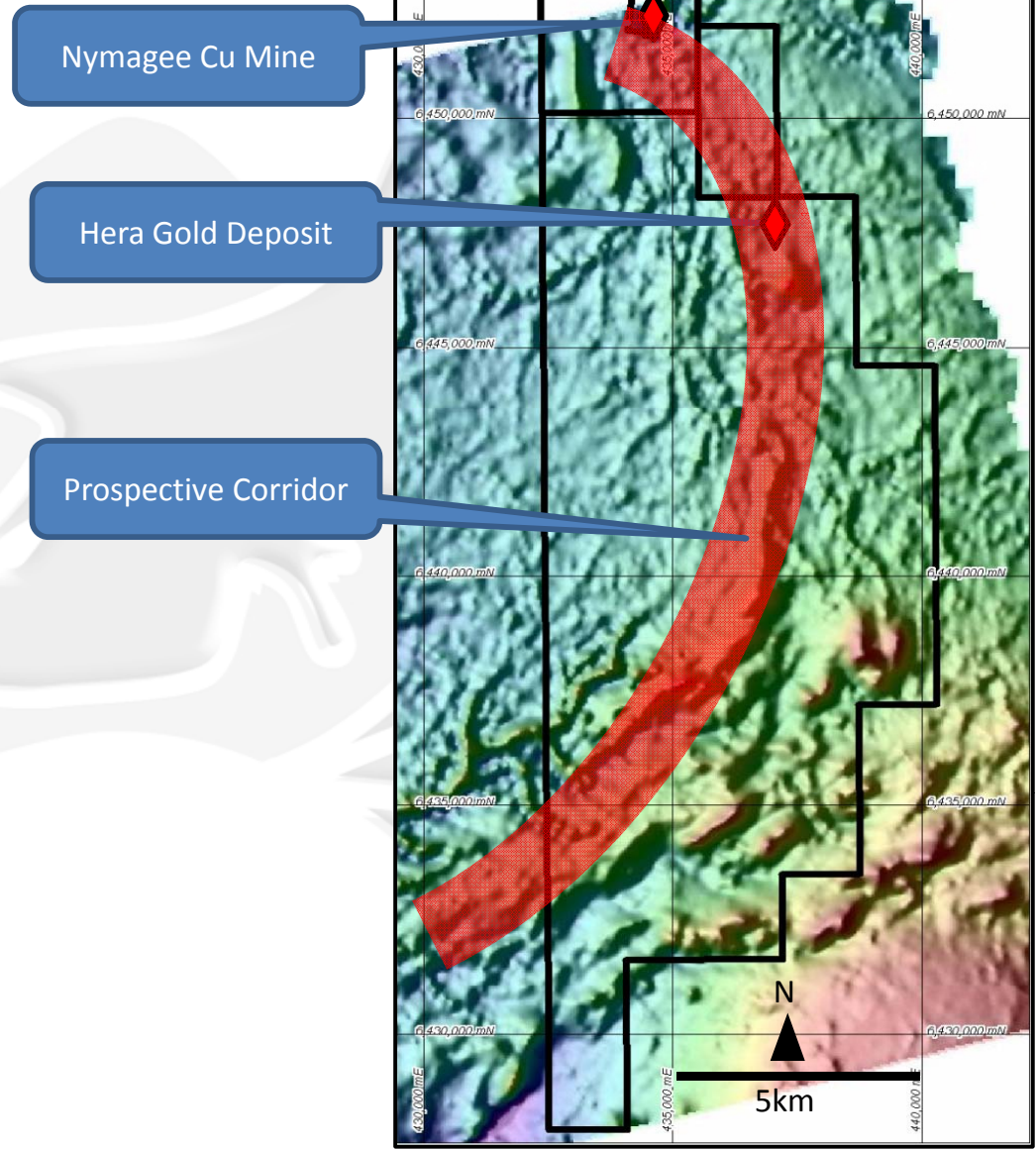
Hera deposit has no surface  
expression

Drill Holes beneath the Nymagee  
Cu Mine include;

- VNY1A: **6.8m @ 8% Cu (u/g)**

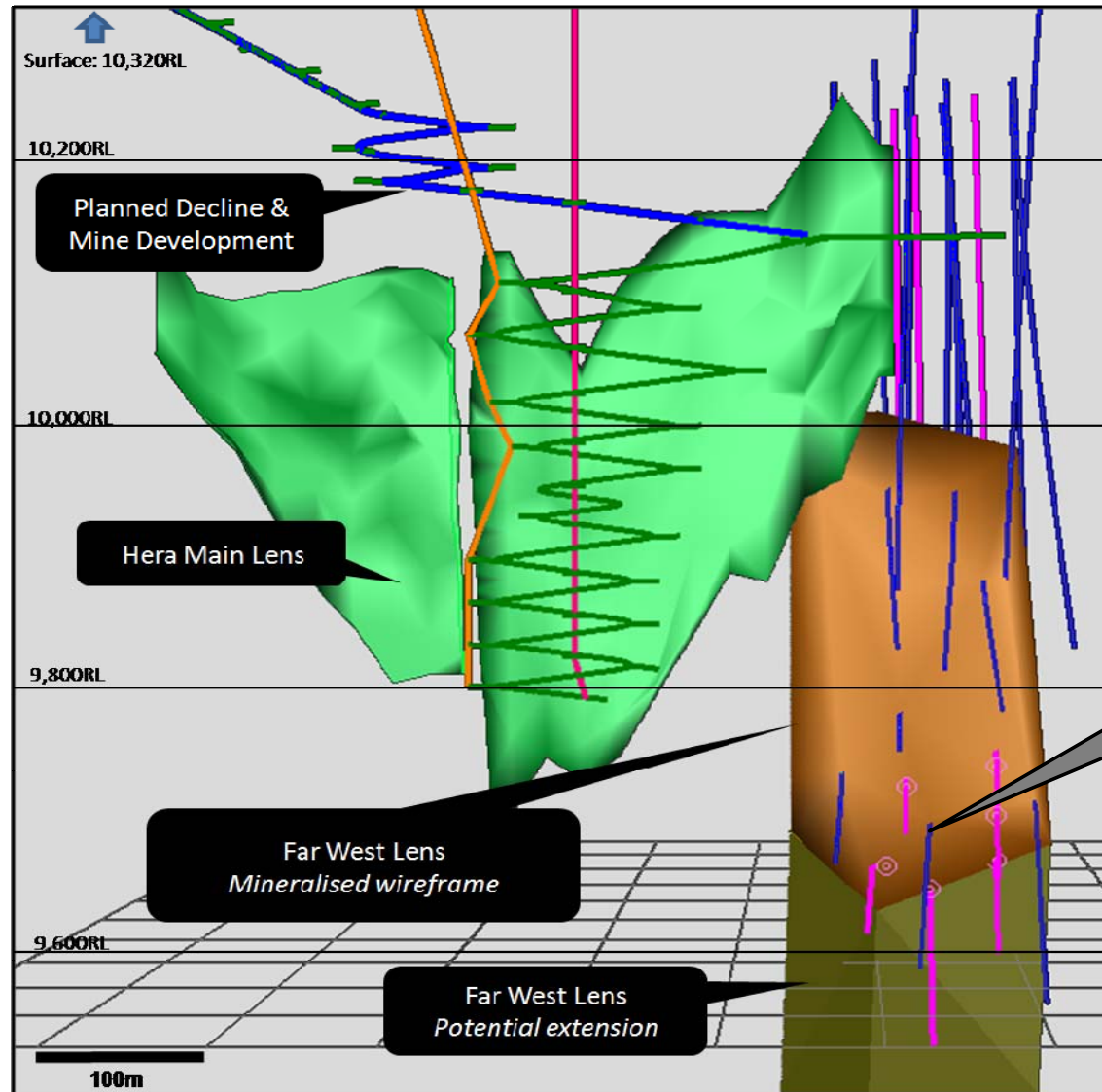
Drilling at Nymagee indicates a  
southerly plunge open at depth.

The use of the gravity technique is  
key to further 'blind' discoveries.



# Hera Exploration Far West Lens

For personal use only



- High grade gold-zinc-lead mineralisation open at depth in the Far West Lens

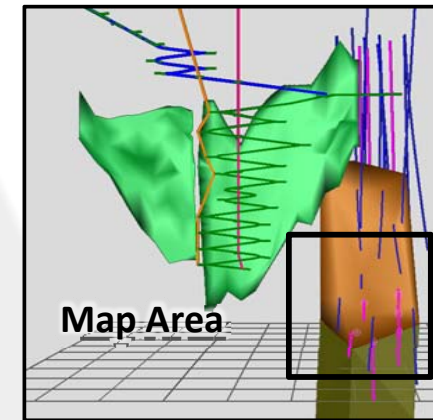
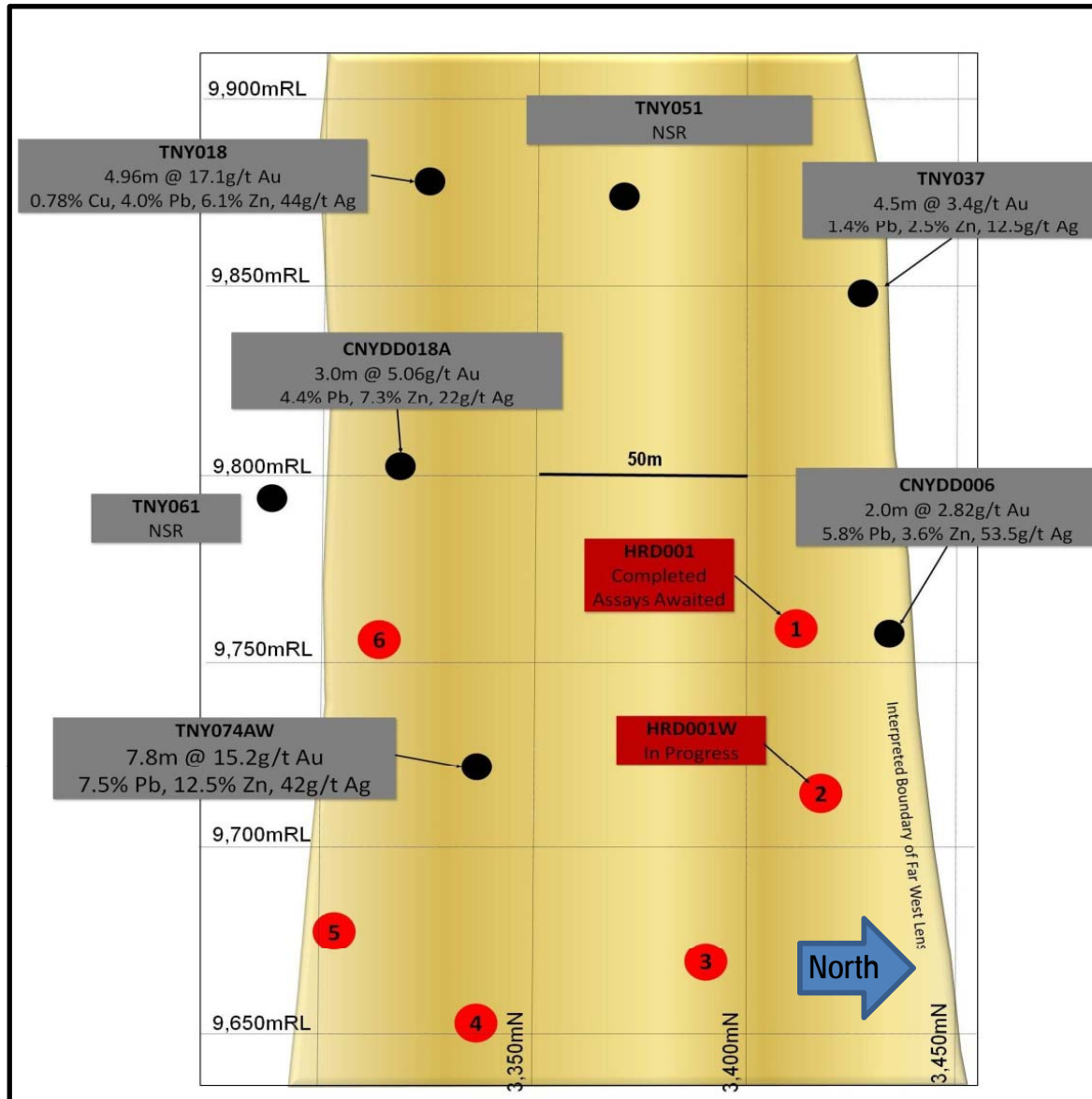
Deepest Hole in Far West:  
TNY074AW  
7.8m @ 15.2g/t Au, 42g/t Ag,  
7.5% Pb, 12.5%

#### Far West Lens Drill Holes

- Existing Drill Hole
- Planned Drill Hole

# Hera Exploration Far West Lens

For personal use only

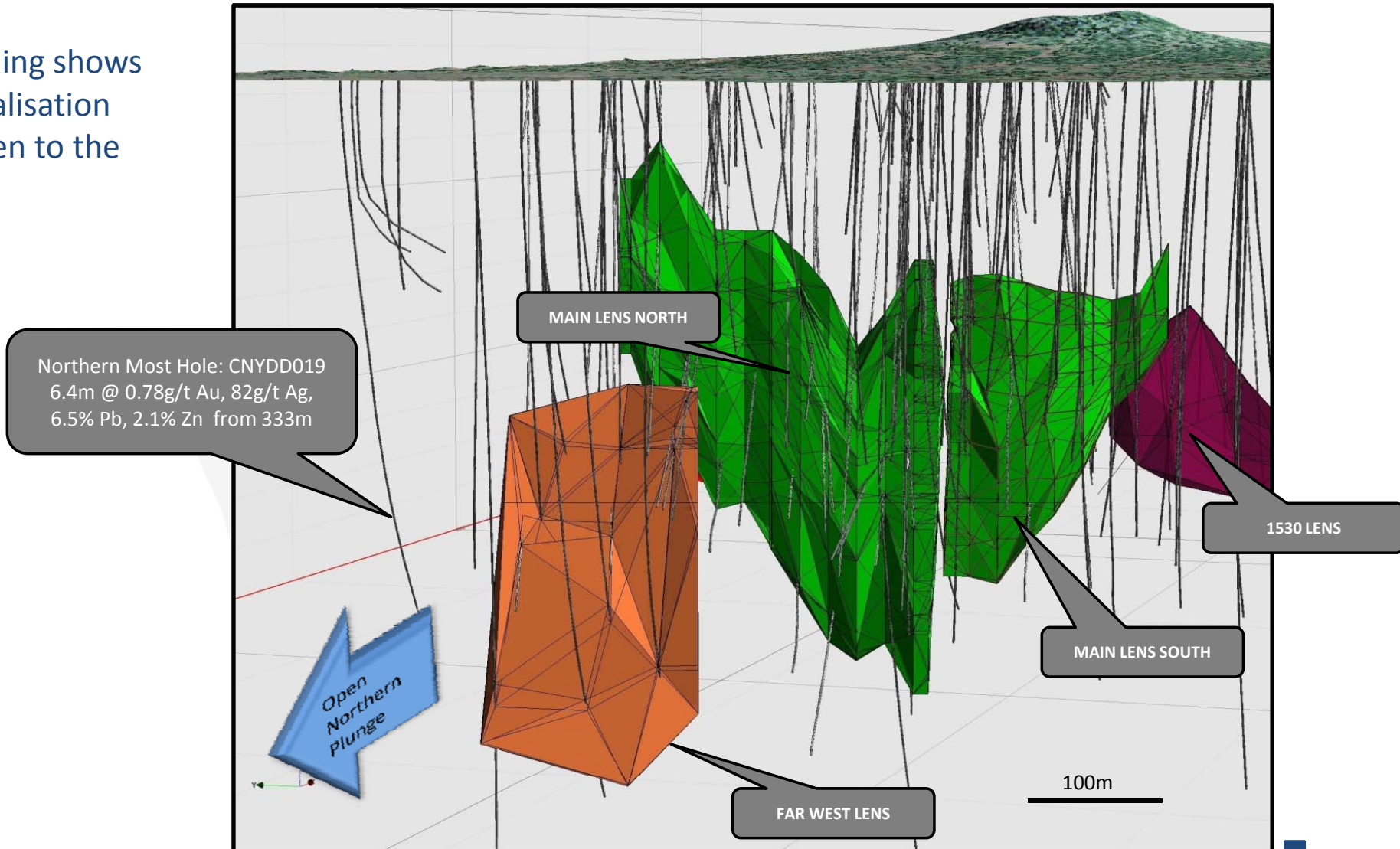


- 1 Target Drill Hole pierce point
- Existing Drill Hole with intersection

# Hera Exploration Hera North

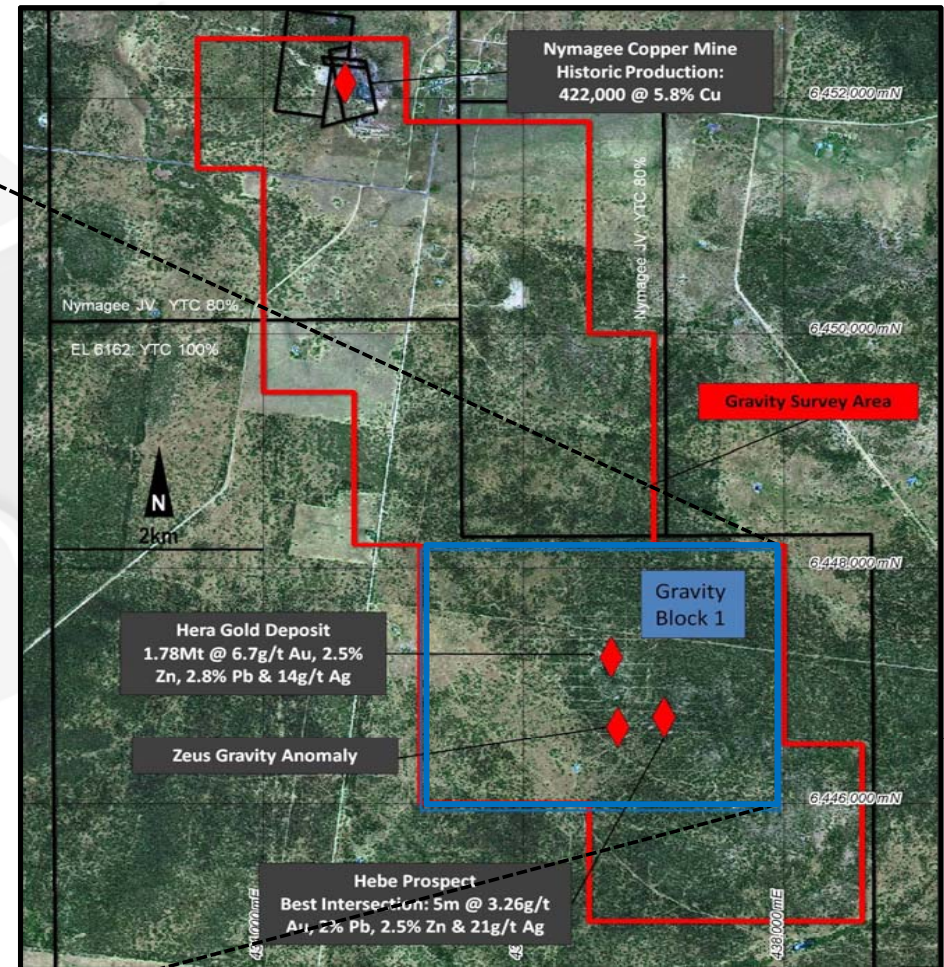
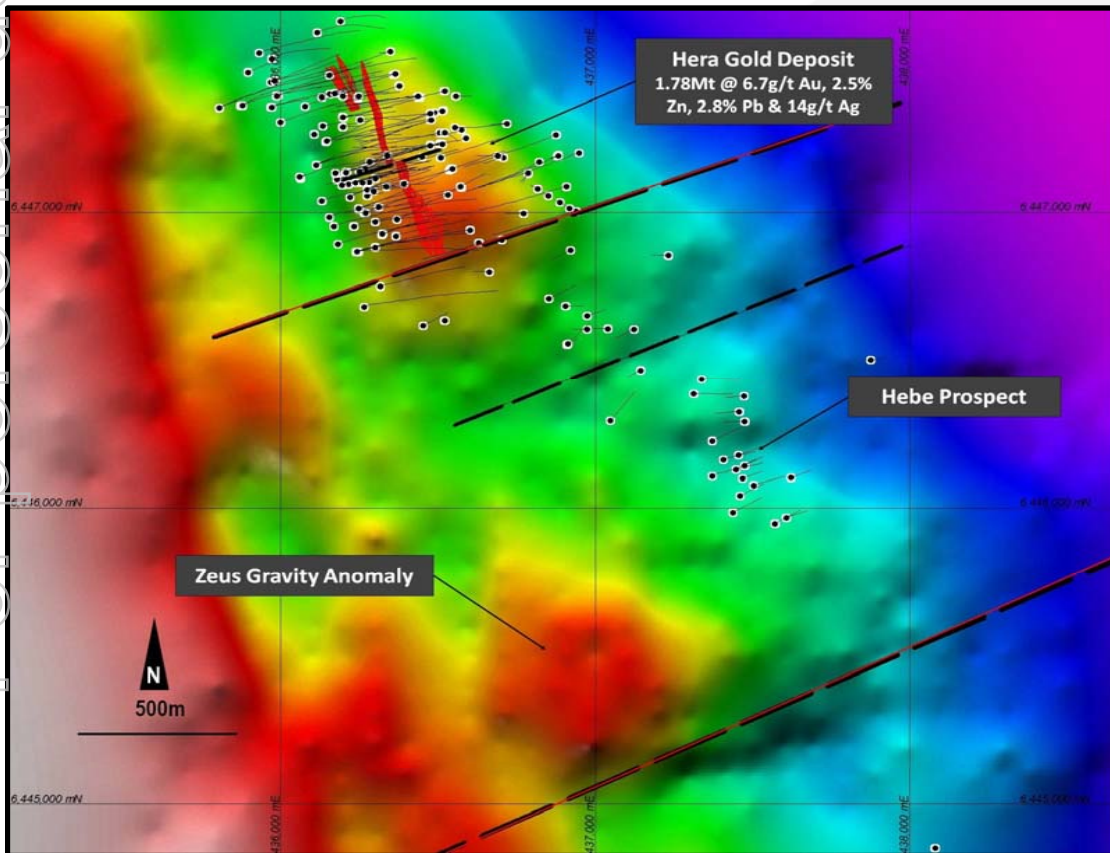
For personal use only

Existing drilling shows  
Hera mineralisation  
remains open to the  
North



# Hera Exploration Gravity

- Gravity a proven technique in defining 'Cobar Basin' deposits
- Block 1 Gravity Results have defined the new 'Zeus' target

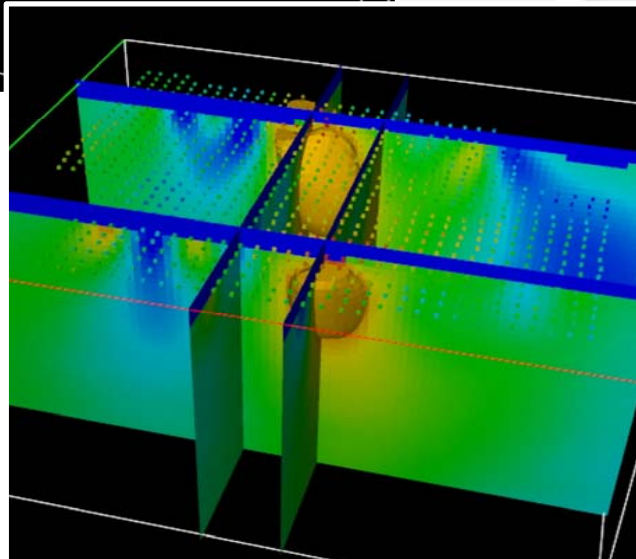
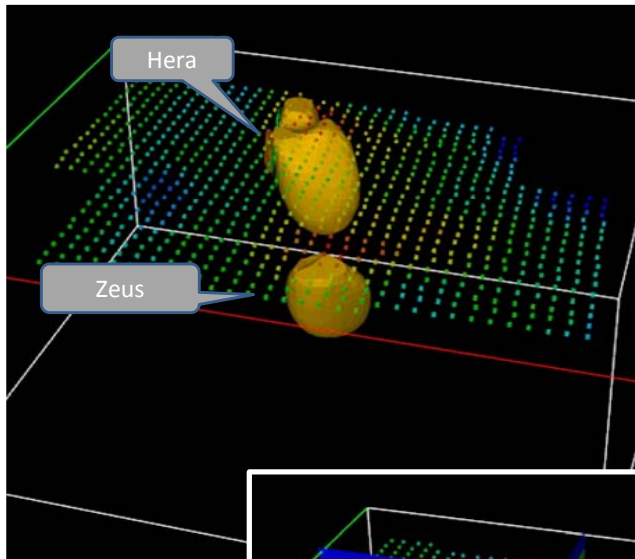


For personal use only

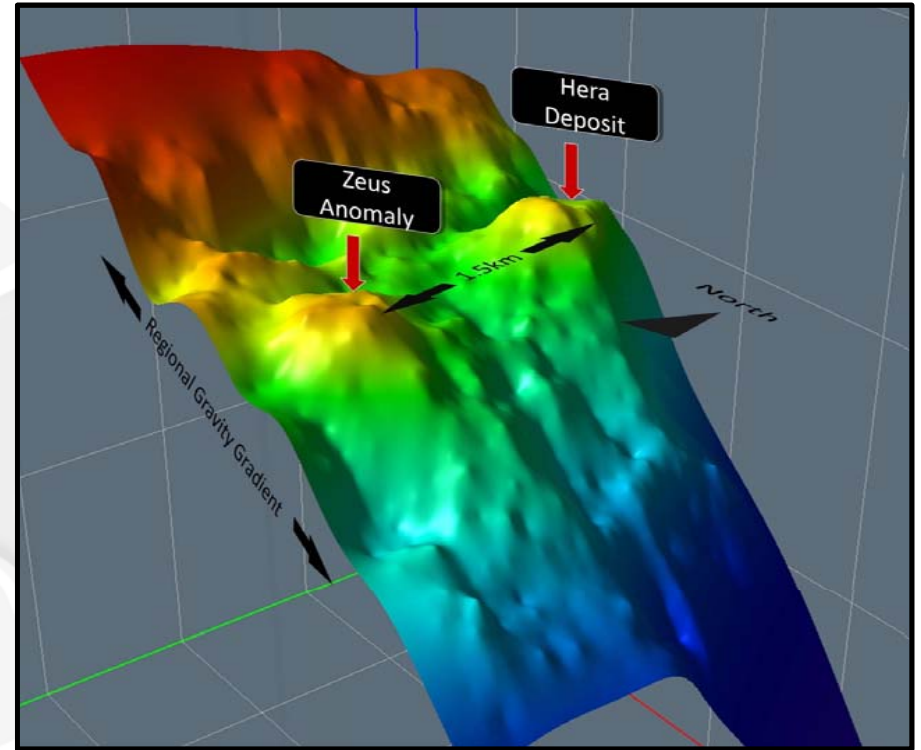


# Hera Exploration Gravity

For personal use only



Gravity  
Inversion  
Models



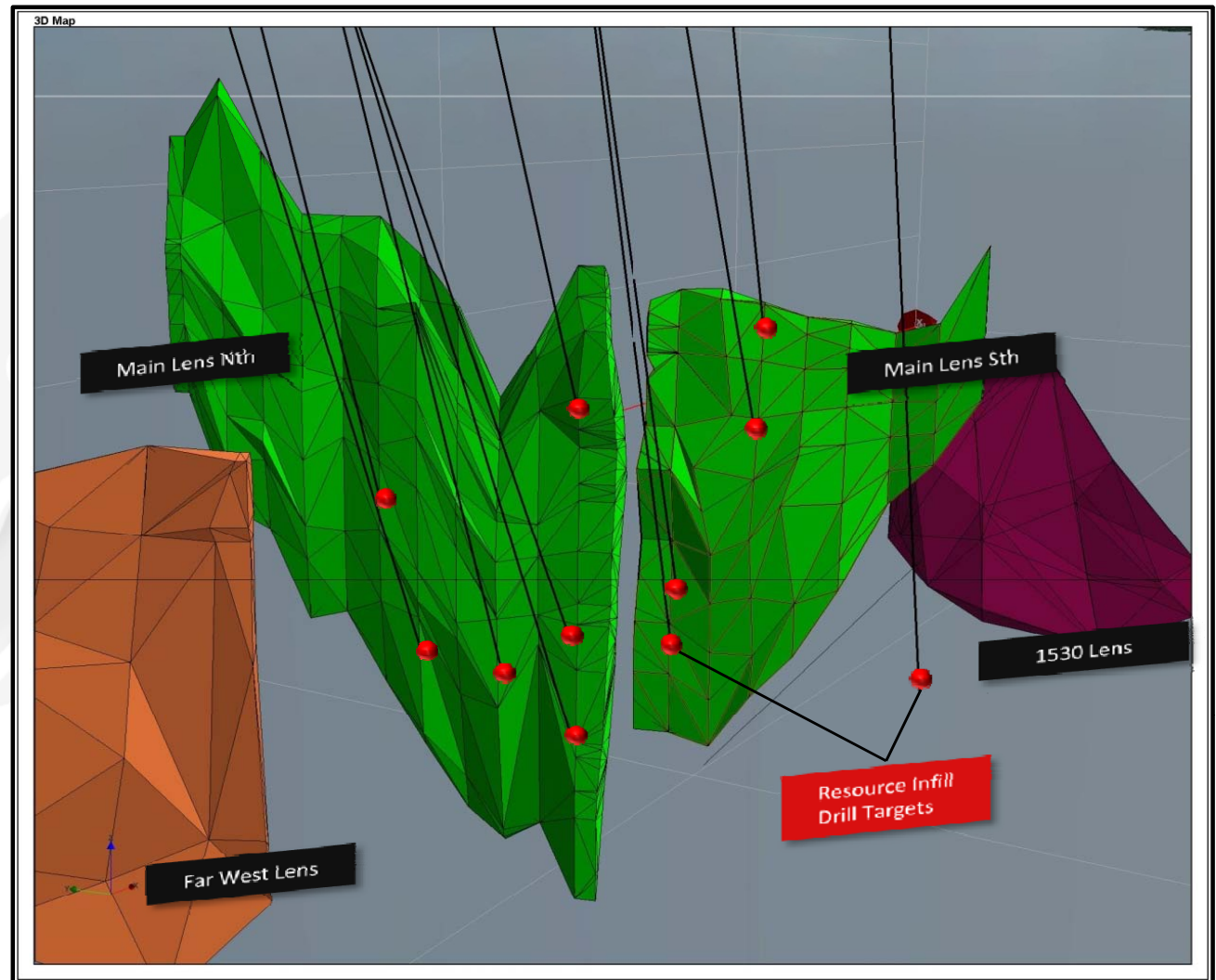
3D image of Block 1 Gravity Results

- Block 1 Gravity modelling has defined a “Hera Style” gravity anomaly for high priority drill testing

# Resource Drilling

For personal use only

- The Resource upgrade component of the DFS is well underway.
- 12 drill holes programmed to infill and upgrade the existing Main Lens Resource.
- Upgraded Resource will be submitted for final DFS Mine Planning.



3D View of Main Lens (looking east) showing Resource infill drill targets



- YTC has emerged through the GFC with a high quality gold and base metal deposit.
- The recent major Capital Raising means YTC is well funded to progress the Hera Gold Project through to DFS and to fund an aggressive exploration programme to expand the Resource and to uncover new discoveries.
- DFS underway, led by GRES.
- Potential for very significant improvement in project economics if 'pre-concentration' test work is shown to be positive.
- Major exploration upside under evaluation with a well funded geophysics and drilling campaign. YTC believe Hera has the potential to evolve into a major 'Cobar Style' gold-base metals mineral system.

Thank You

For personal use only



Drill Core – Hole HRD005