

Rawson Resources Limited

ABN 69 082 752 985

PO Box R1868

Royal Exchange

NSW 1225

14 July 2010

**To Australian Stock Exchange
Electronic lodgements
For immediate release**

New Zealand Update - Tuatara 1

Rawson Resources Limited (ASX: 'RAW') is pleased to advise that Kea Petroleum Plc. ('Kea') has released the attached announcement to the London Stock Exchange concerning the drilling of the Tuatara 1 exploration well.

Rawson Taranaki Limited holds 27,307,692 shares in Kea Petroleum Ltd giving Rawson a 5.4% holding. These shares are currently held in escrow as part of a vendor consideration.

Further information is available from the Kea website. Rawson will issue further announcements of significance as they occur.

For further information:

John Conolly
Executive Chairman
Rawson Resources Limited
0418 486 239

John Doughty
General Manager
Rawson Resources Limited
02 9255 7428

Background: Rawson Resources Ltd is primarily an oil and gas exploration company in Australia with permits in the Otway, Surat, Cooper and Pedirka Basins and also interests in the Taranaki and Northland Basins in New Zealand.

For personal use only



Kea Petroleum plc
("Kea" or the "Group")

Tuatara-1 Expected to Spud Before End of July

Kea Petroleum plc is pleased to announce that the Tuatara-1 well, which Kea farmed into on 18 May 2010 by obtaining a 10% participating interest, is expected to spud before the end of July. The operator, AWE New Zealand Limited, a subsidiary of the Australian Stock Exchange (ASX) listed company AWE Limited, has confirmed that its Kan Tan IV rig is making good progress on its current well, Kahu-1, which is situated near the Tui oil field where the Tuatara-1 well is situated. Once drilling is completed at Kahu, the rig is expected to move around 27th July to the Tuatara prospect in PEP 38524. Any additional drilling or testing on Kahu in the interim would cause this date to slip.

The Tuatara structure is a simple 4-way dip closure with a clear DHI (direct hydrocarbon indicator), which compares favourably with the Maari Field. Based on that field, mid case resources of 80 mmbbl have been estimated. The well will be located in approximately 50 metres of water about 15 km from the coast and 30 km from the town of Nelson near the northern end of New Zealand's South Island. The total depth of the well is 2,000 metres, so that drilling should be fairly rapid and the results known before the end of August.

Partners in PEP 38524 (Tuatara-1) are:

AWE (operator):	65%
Roc Oil:	15%
Kea Petroleum:	10%
Carnarvon Petroleum:	10%

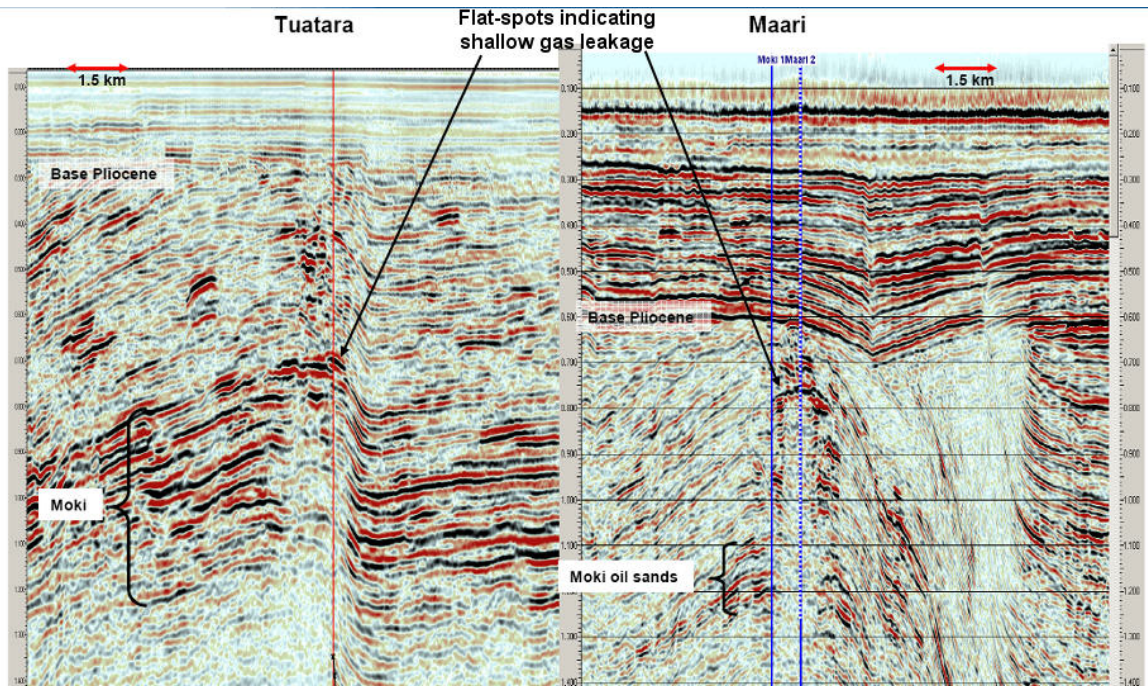
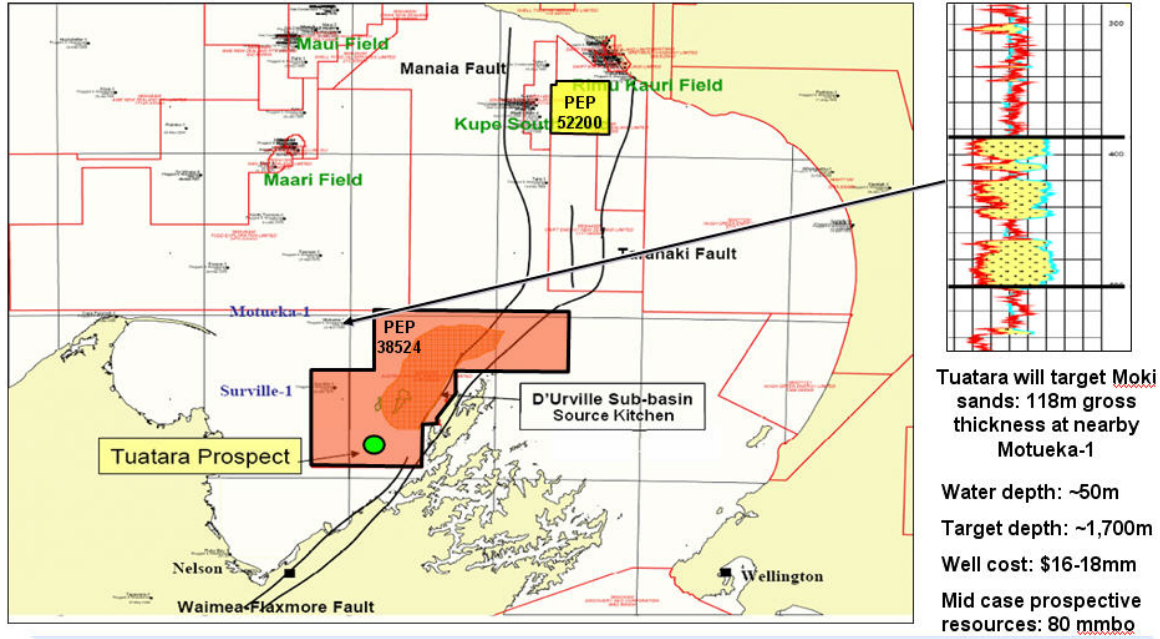
Kea Chairman Ian Gowrie-Smith said:

"We are excited about the prospectivity of this acreage and to test it with drilling Tuatara. The combination of drilling Wingrove 2, Beluga and Tuatara in quick succession has certainly seen Kea off to a busy start since our IPO earlier this year. We hope to hear shortly whether the company has been successful in acquiring additional acreage in the Taranaki basin of New Zealand we consider very important in the near future. Should we be successful with Tuatara it would certainly be of great significance to this company and we look forward to getting on with the drilling"

Please see below a map detailing the location of Tuatara-1 and a related geological chart.

For personal use only

For personal use only



For further information please contact:

Kea Petroleum plc
David Lees, Executive Director

Tel: +44 (0)20 7340 9970

RBC Capital Markets
Matthew Coakes / Brett Jacobs / Daniel Conti
Martin Eales (NOMAD)

Tel: +44 (0)20 7653 4000

Buchanan Communications
Tim Anderson / James Strong

Tel: +44 (0)20 7466 5000

Notes to Editors:

Kea Petroleum is an AIM listed oil and gas exploration company with three petroleum exploration permits in Taranaki and Northland Basins of New Zealand. Kea listed on the London market in February 2010.

For personal use only