



Saracen

SARACEN MINERAL HOLDINGS LTD

Guido Staltari, *Executive Chairman*

Raleigh Finlayson, *Chief Operating Officer*

Diggers & Dealers Presentation, August 2010

Explore the possibilities.

Qualification

This is a presentation about geology, geoscientific interpretation, geoscientific speculation, gold deposits, gold potential, engineering, infrastructure, potential values, costs, risks, and related matters pertinent to Saracen's present and future activities as a publicly listed mineral exploration and production company.

Some of the comments and predictions made, or that might be interpreted from the comments herein, are subjective and speculative, in part because such is the very nature of gold exploration and exploitation, and in part also because geoscientists and engineers can be very optimistic about the future of the exploration and other work programs they are involved in. Such optimism can lead to erroneous judgments as to future results and valuations, and in many cases external factors may change the outcome.

Take care to question and carefully evaluate any judgments you might make, on the basis of this presentation, as to the value of Saracen and its securities. This presentation is not intended to provide the sole or principal basis of any investment or credit decision or any other risk evaluation and may not be considered as a recommendation by Saracen or its officers. Any investor reading this presentation should determine its interest in acquiring securities in Saracen on the basis of independent investigations that it considers necessary, prudent or desirable.

Saracen and its officers do not accept any liability for any loss or damage suffered or incurred by any investor or any other person or entity however caused (including negligence) relating in any way to this presentation including, without limitation, the information contained in it, any errors or omissions however caused by any other person or entity placing any reliance on this presentation, its accuracy or reliability.

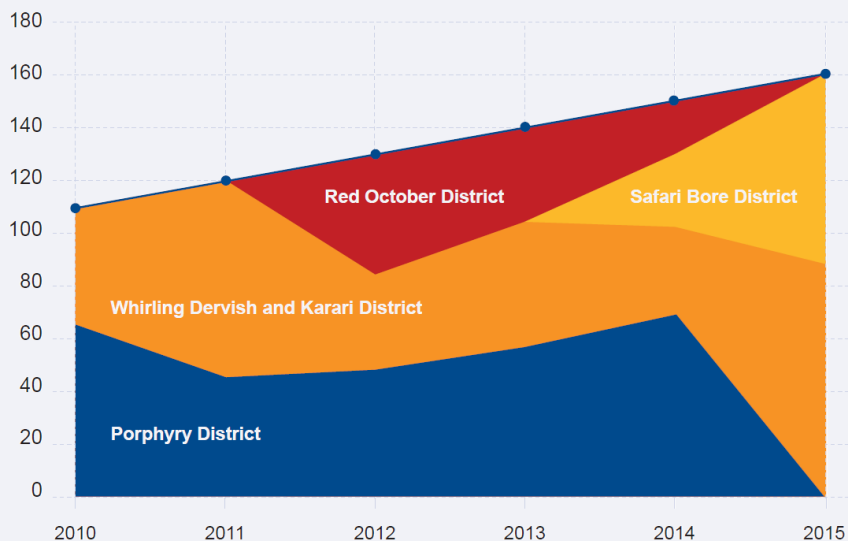
This presentation should not be construed as an offer or mooted offer in relation to Saracen securities.

CORPORATE SNAPSHOT

Target Production

150,000 – 160,000ozpa by 2015 via the inclusion of high grade underground ore blended with open pit mill feed; no plant upgrade required to achieve production target.

Rec oz in (000's)



Baker Steel	8%	Sprott Asset Man	7%
Clodene	7%	Shares on Issue	491m
Directors	6%	Shareholders approx	3,300

ASX Code: SAR

Shares on Issue: 491m

Share Price: \$0.42

Market Cap: \$206m^

Cash: \$30m

Debt: Nil

Tax Benefits: A\$60m

Metrics

Production: 100,000 - 120,000ozpa

Targeting: 150,000 - 160,000ozpa (by 2015)

Resources: 3 Moz*

Reserves: 880 Koz*

EV/Resource oz: \$55/oz^

EV/Reserve oz: \$195/oz^

Margins and Costs

Cash Costs: Forecast A\$600-700/oz

Margins: Underpinned by A\$1250/oz puts

Hedging: Puts over 144,000oz, and Calls sold over 85,000oz, Calls equal only 9% of reserve ounces

^ assuming a share price of \$0.42/share

* subject to depletion & addition adjustments

SARACEN | Our points of difference

Quality Assets

- ▶ Valuable Infrastructure
- ▶ World Class Exploration
- ▶ Regional gatekeeper

Resources

- ▶ Resources: 3 moz
- ▶ Reserves: 880 koz (~7yrs life)
- ▶ Open pit & UG ore sources

Commissioning

- ▶ Completed in early 2010>> de-risked
- ▶ 15,000oz produced (Jan-Mar 2010)
- ▶ Plant performance exceeded expectation



Production

- ▶ June quarter 25,000oz
- ▶ A\$654/oz cash cost (ex Roy.)
- ▶ Sept forecast 30,000oz
- ▶ A\$640/oz cash cost (ex Roy.)

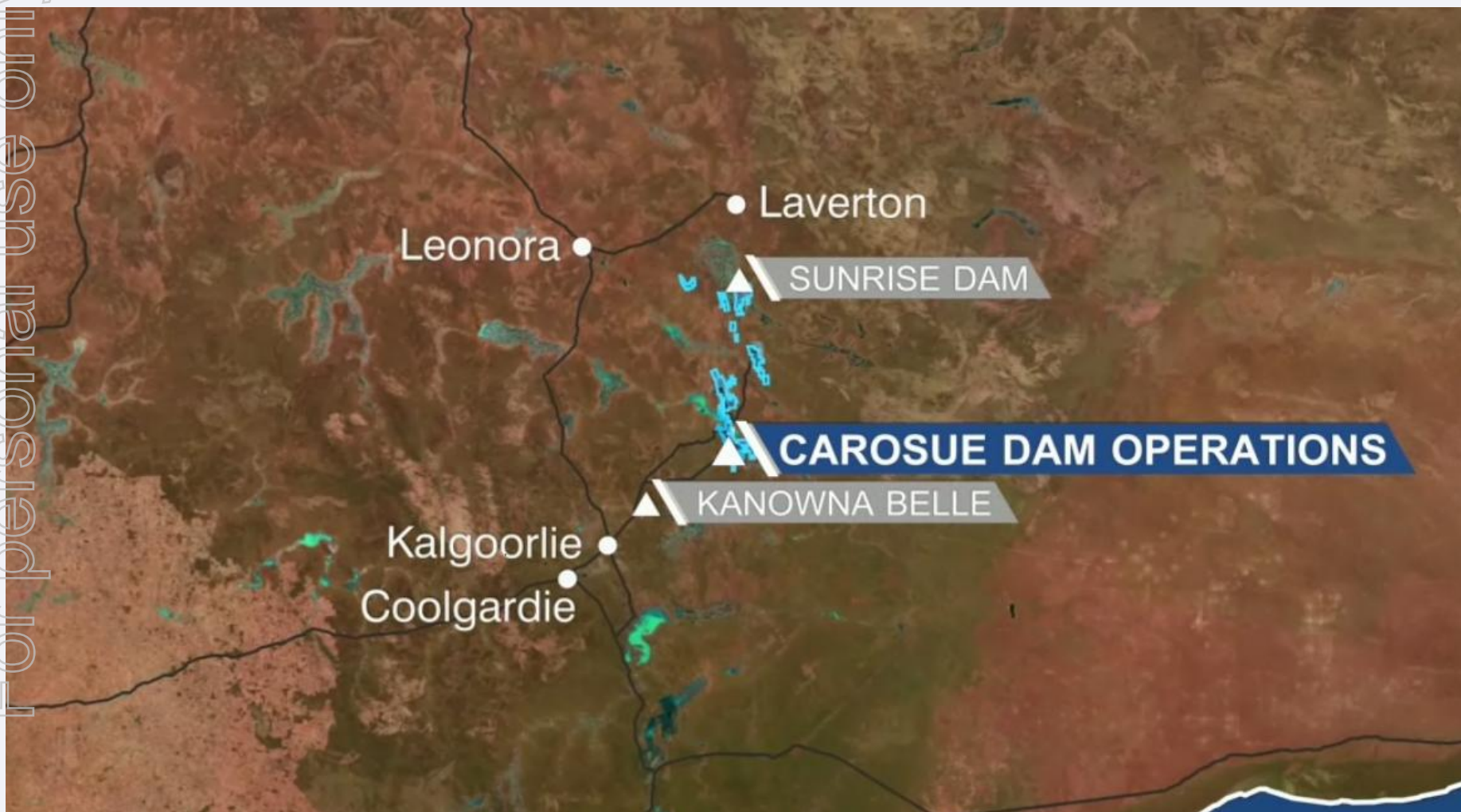
Growth Potential

- ▶ \$12m exploration budget FY11
- ▶ +25Moz discovered in region
- ▶ Significant UG potential
- ▶ Red October District

Investment Appeal

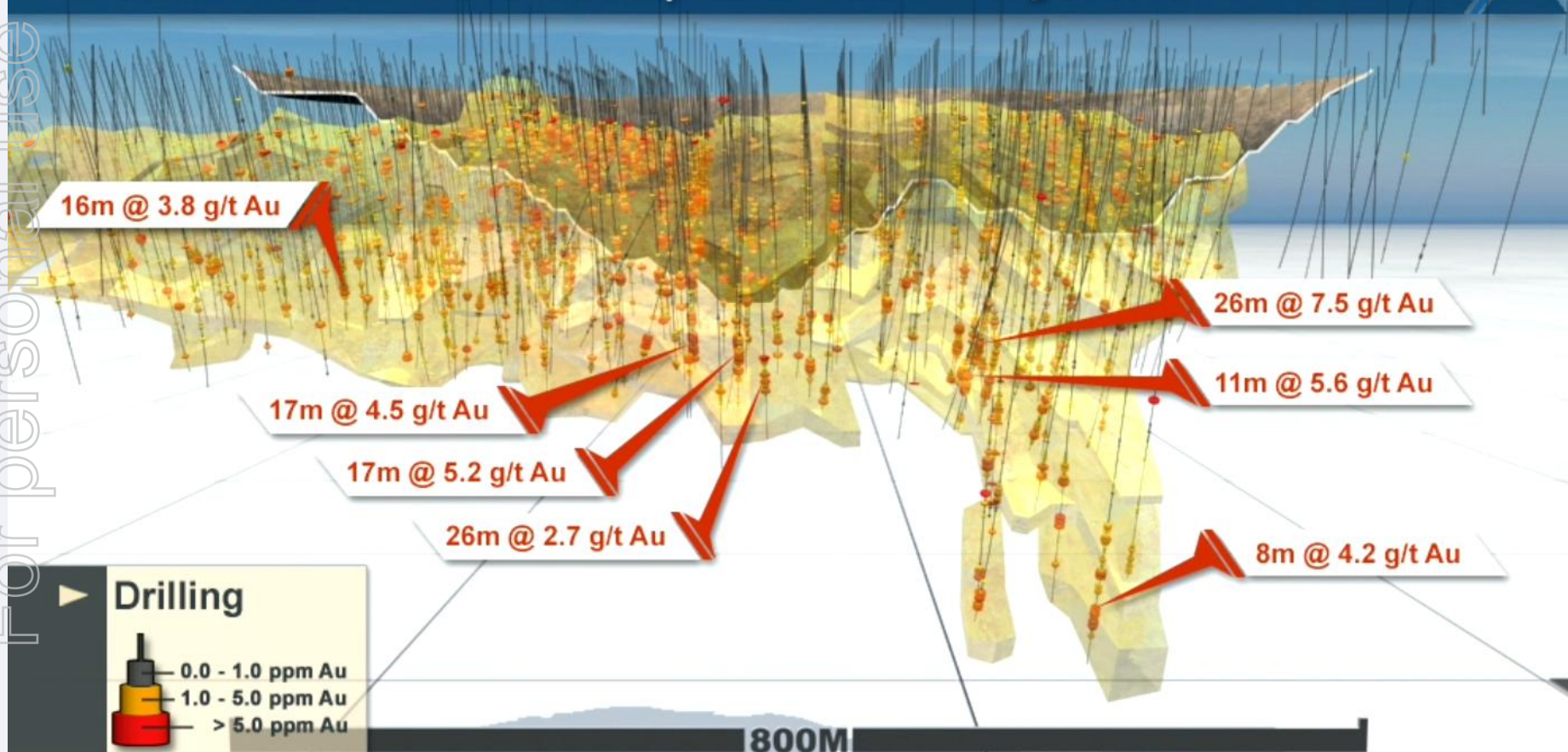
- ▶ Conservatively hedged
- ▶ Debt free
- ▶ Robust economics and mine life
- ▶ Deliver on commitments

LOCATION



KARARI - LONGSECTION

► CAROSUE DAM DISTRICT | Karari Mine - long section



WHIRLING DERVISH – CROSS SECTION

CAROSUE DAM DISTRICT | Whirling Dervish - cross section 49575mN

23m @ 4.8 g/t Au

25m @ 4.3 g/t Au

17m @ 8.2 g/t Au

18m @ 4.1 g/t Au

11m @ 4.2 g/t Au

10m @ 3.4 g/t Au

24m @ 3.9 g/t Au

300M

Drilling

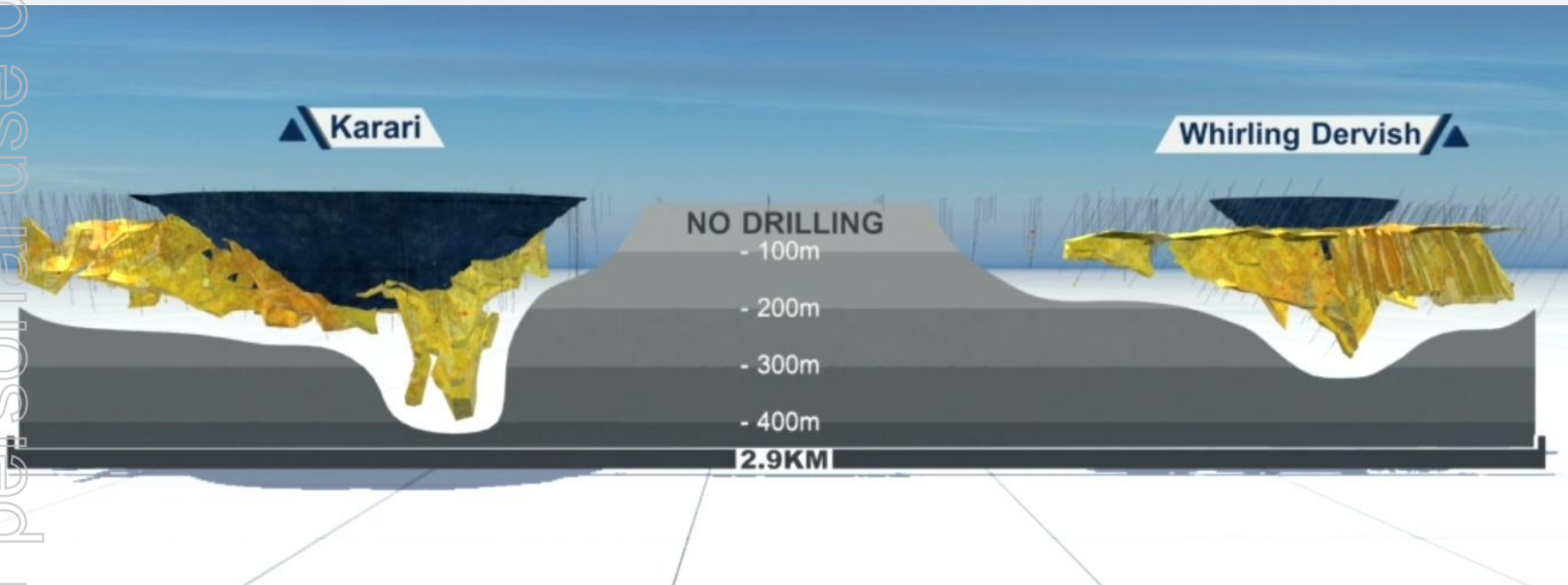


0.0 - 1.0 ppm Au

1.0 - 5.0 ppm Au

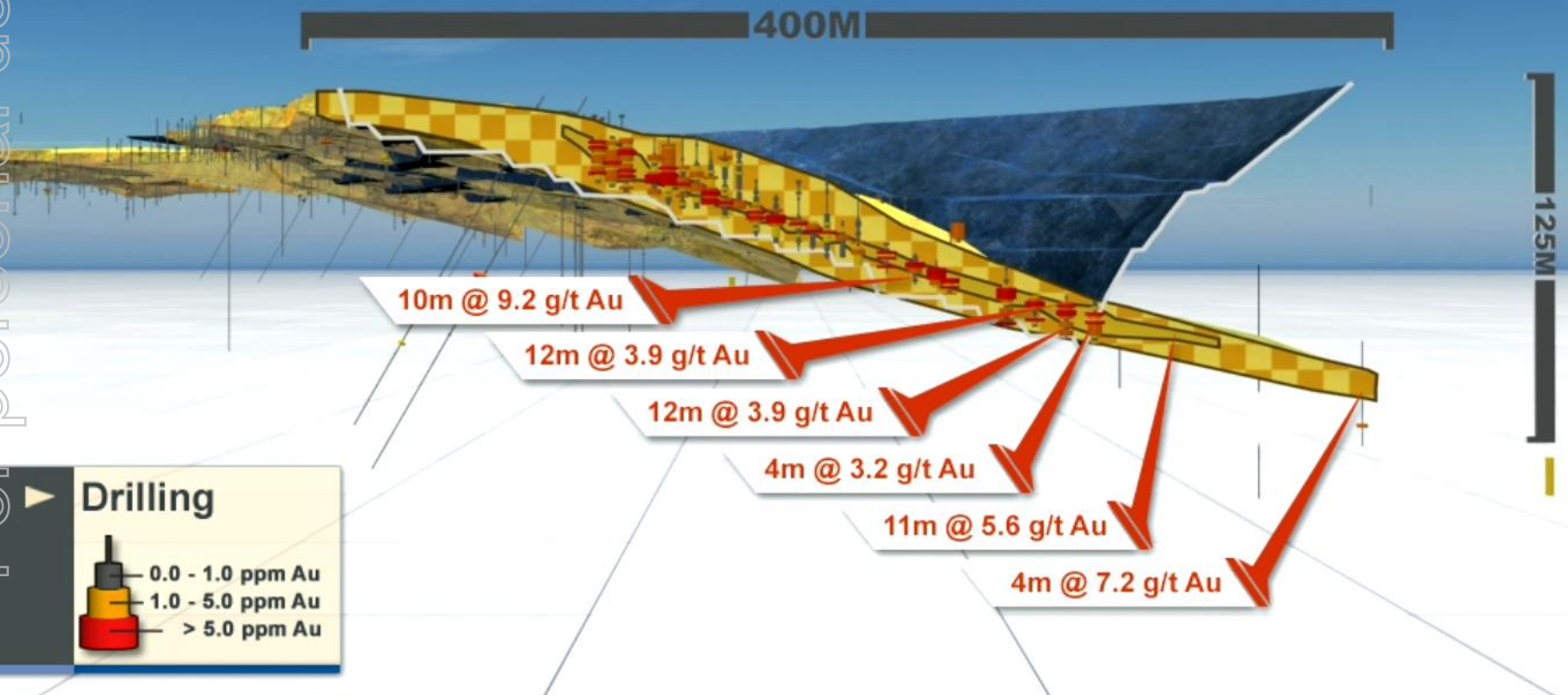
> 5.0 ppm Au

KARARI – WHIRLING DERVISH POTENTIAL



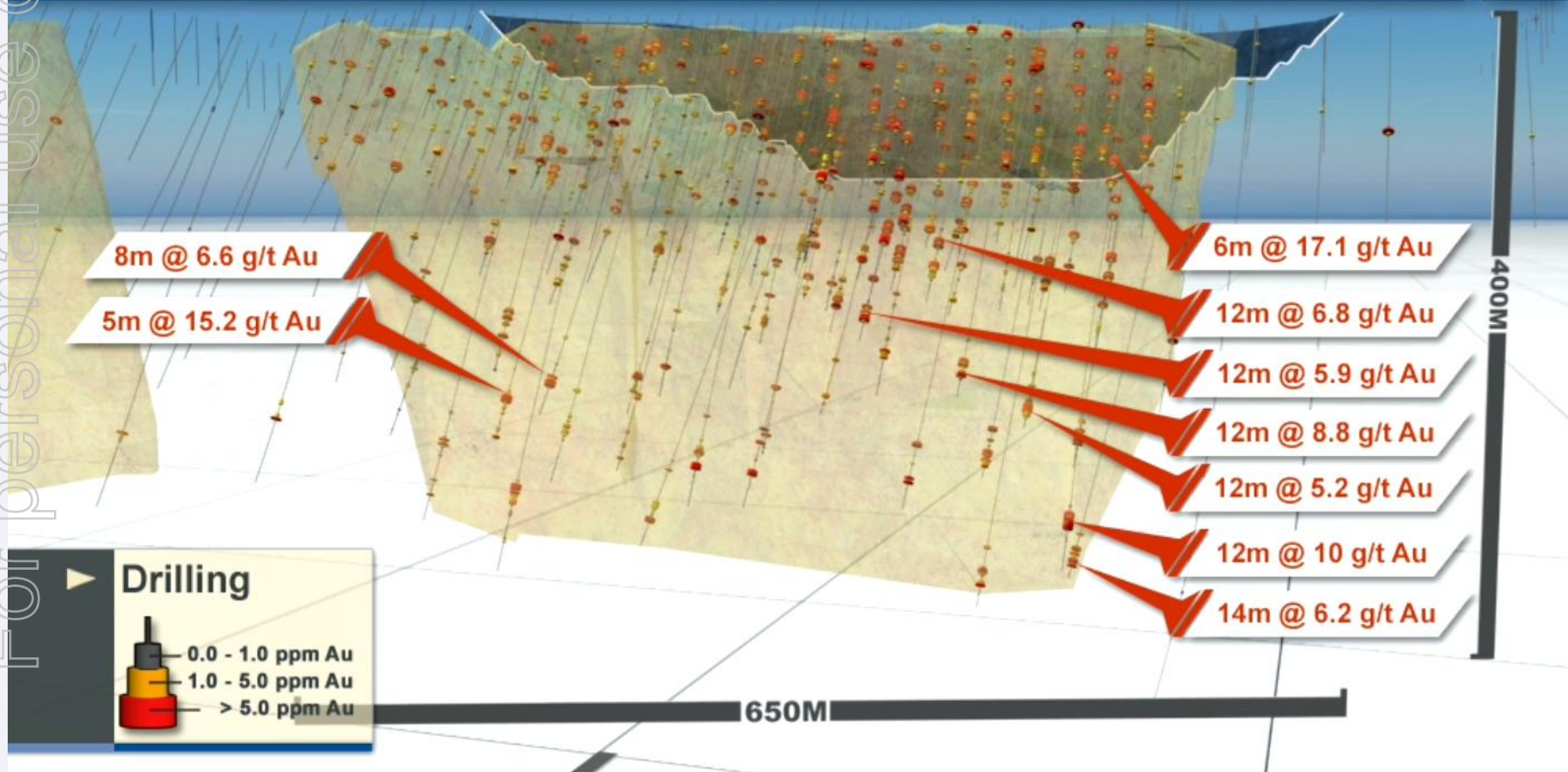
PORPHYRY – CROSS SECTION

► PORPHYRY DISTRICT | Porphyry Mine - cross section 7755mN



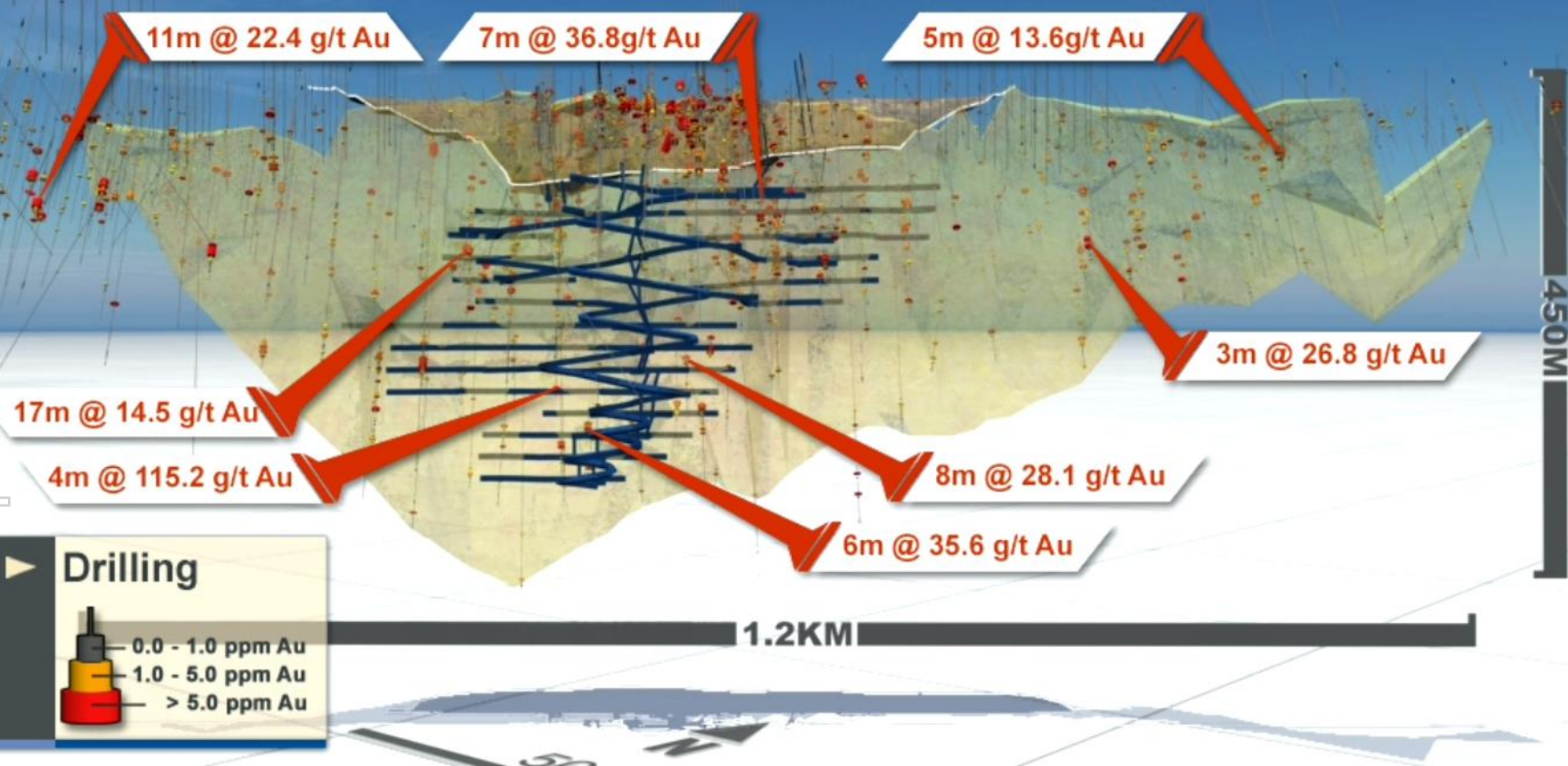
DEEP SOUTH – LONG SECTION

► SAFARI BORE DISTRICT | Deep South Mine - long section

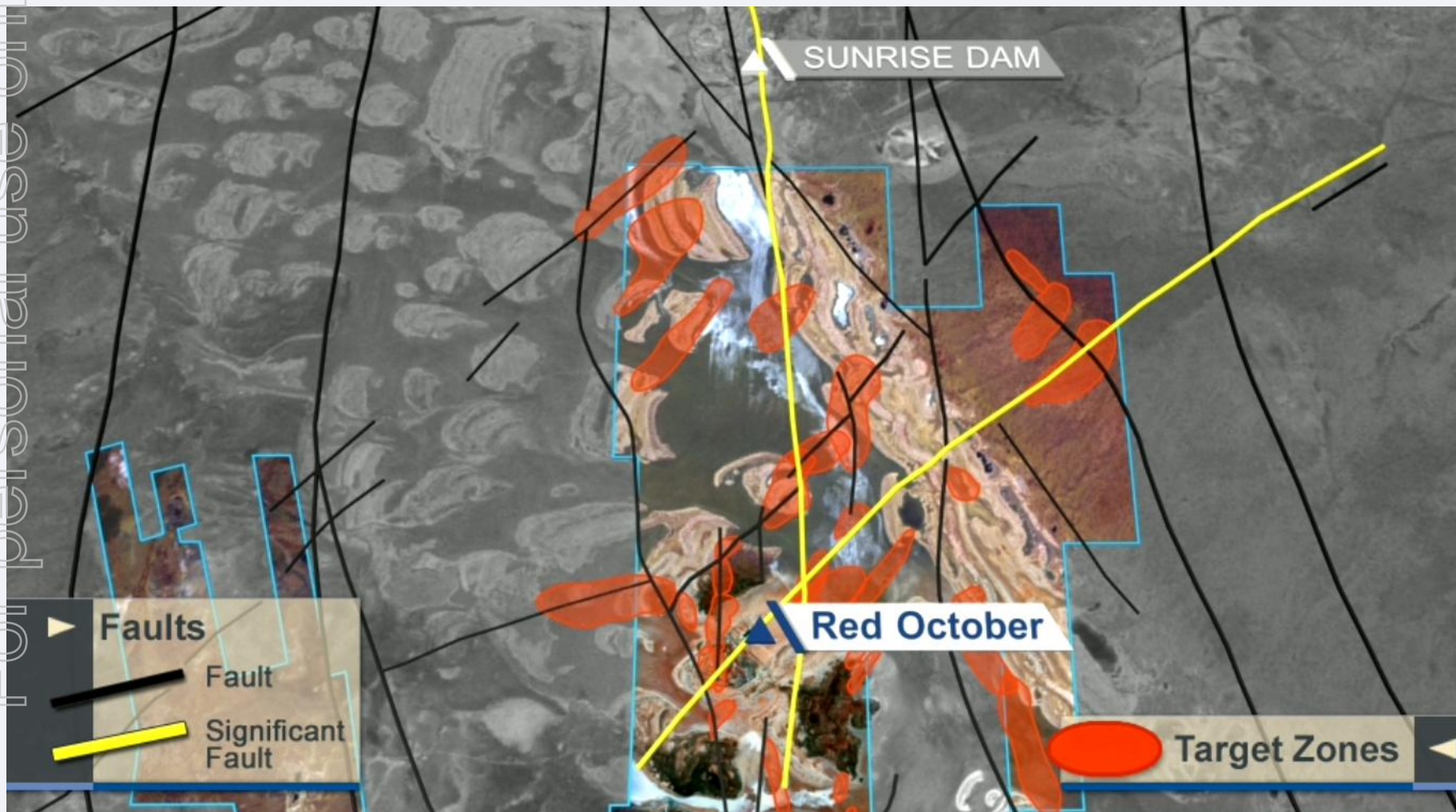


RED OCTOBER – LONG SECTION

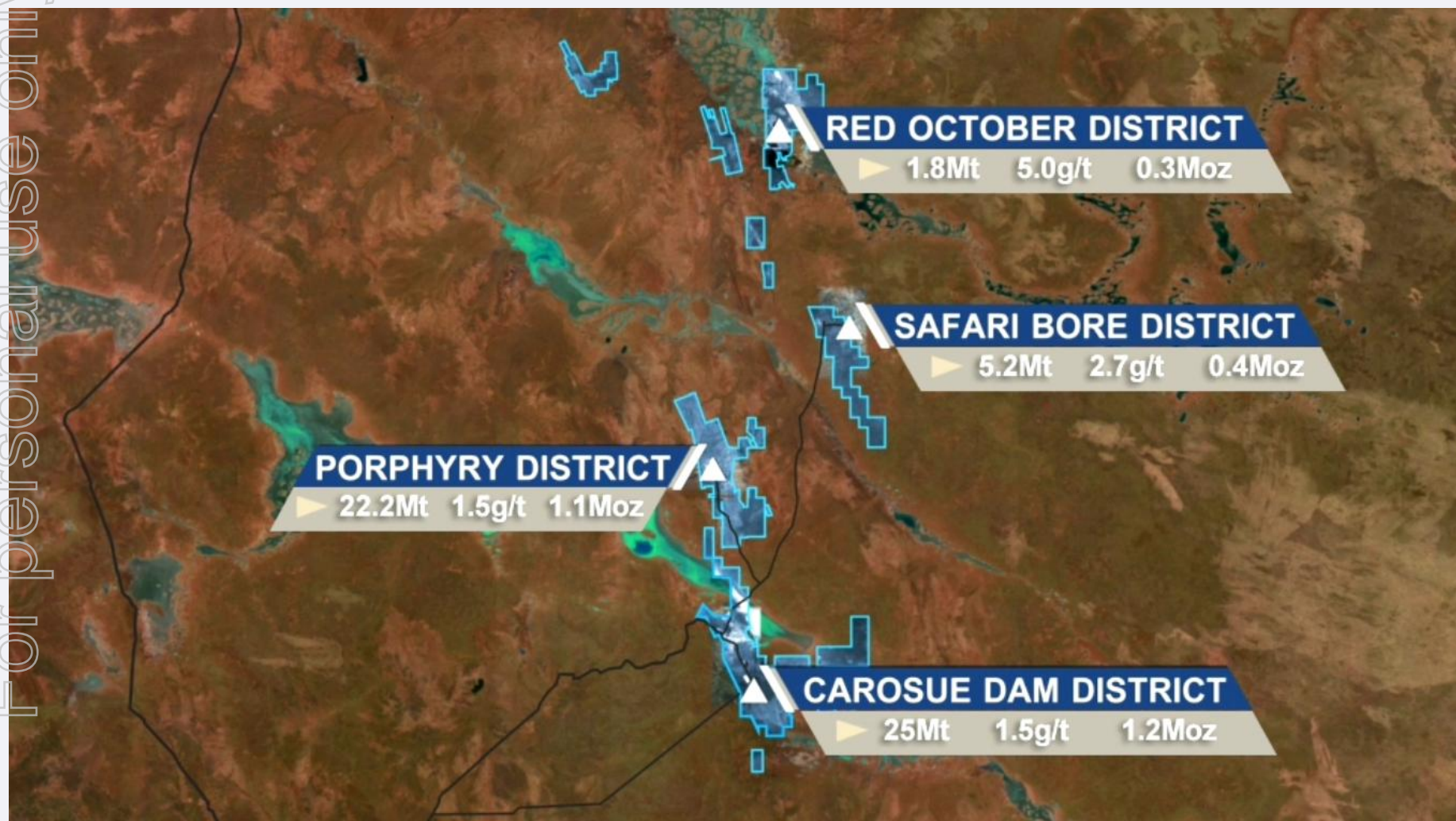
RED OCTOBER DISTRICT | Red October Mine - long section



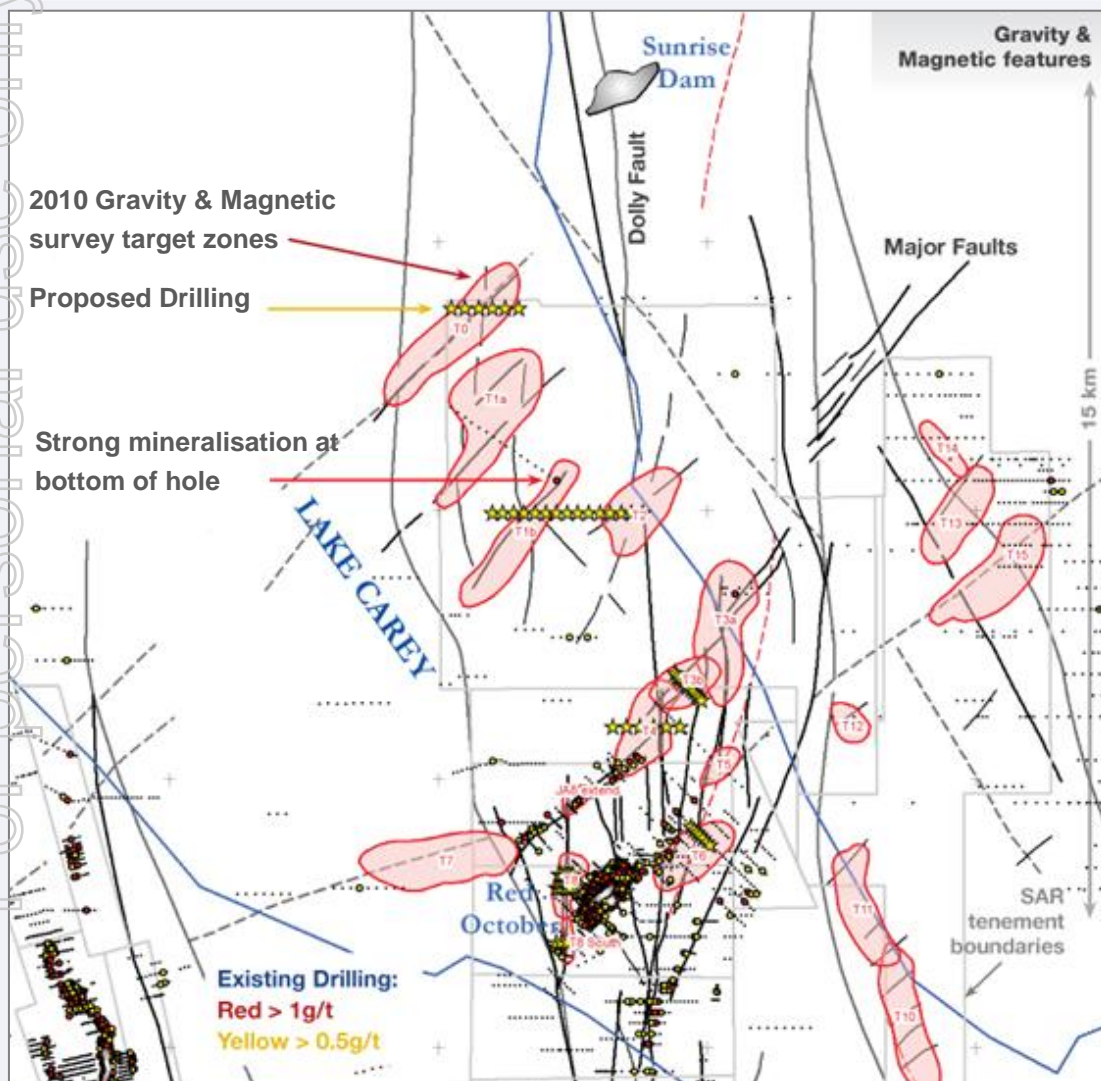
RED OCTOBER - DISTRICT POTENTIAL



RESOURCES

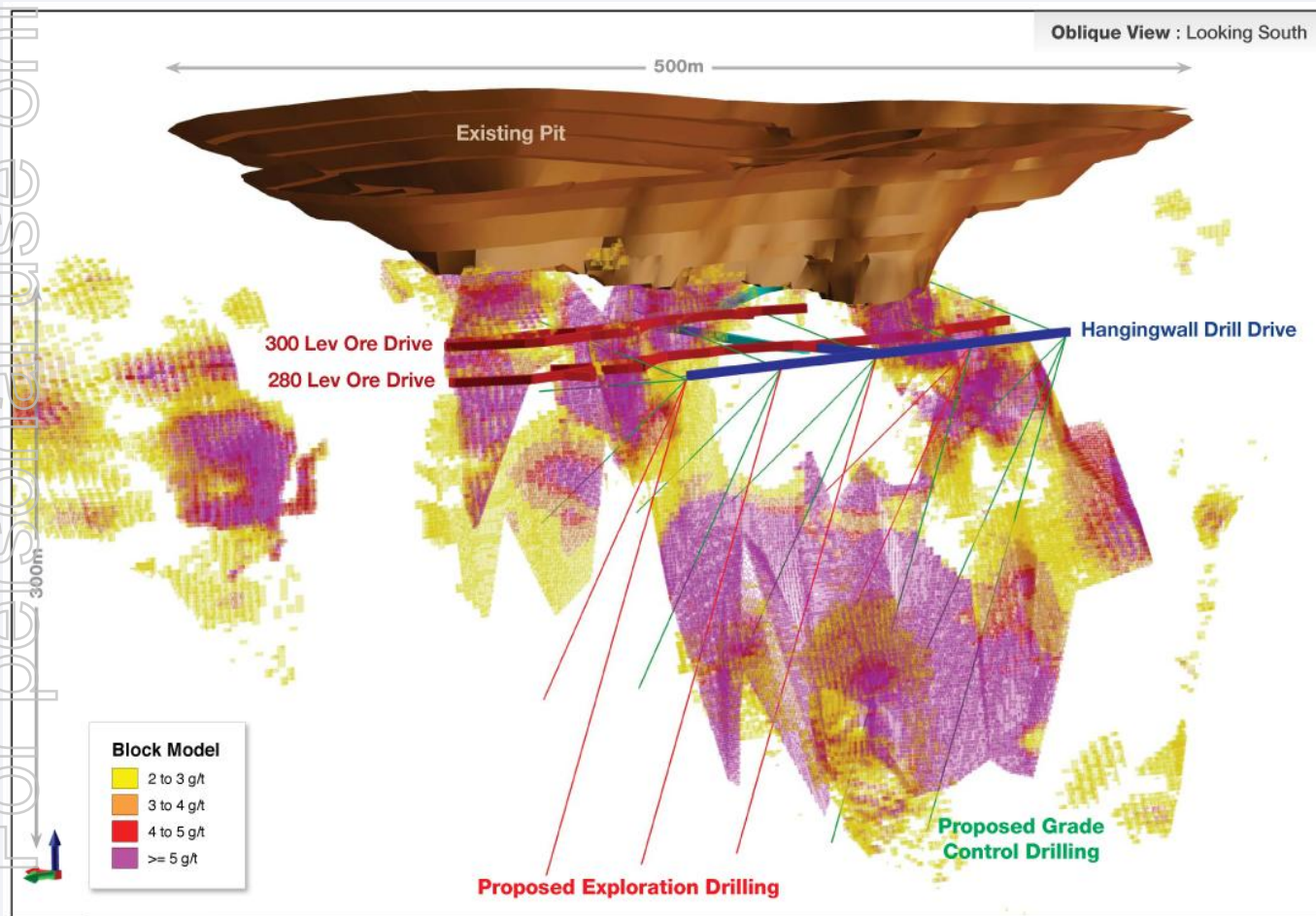


RED OCTOBER – EXPLORATION



- ▶ Significantly undrilled, highly prospective zone between Sunrise Dam & Red October
- ▶ Sunrise Dam: Located on intersection of NE/SW trending & NS trending structures (Dolly Fault)
- ▶ Dolly Fault trends south to Red October
- ▶ Multiple intersecting structures between Sunrise Dam & Red October
- ▶ Government Grant received (\$150k) towards drilling costs

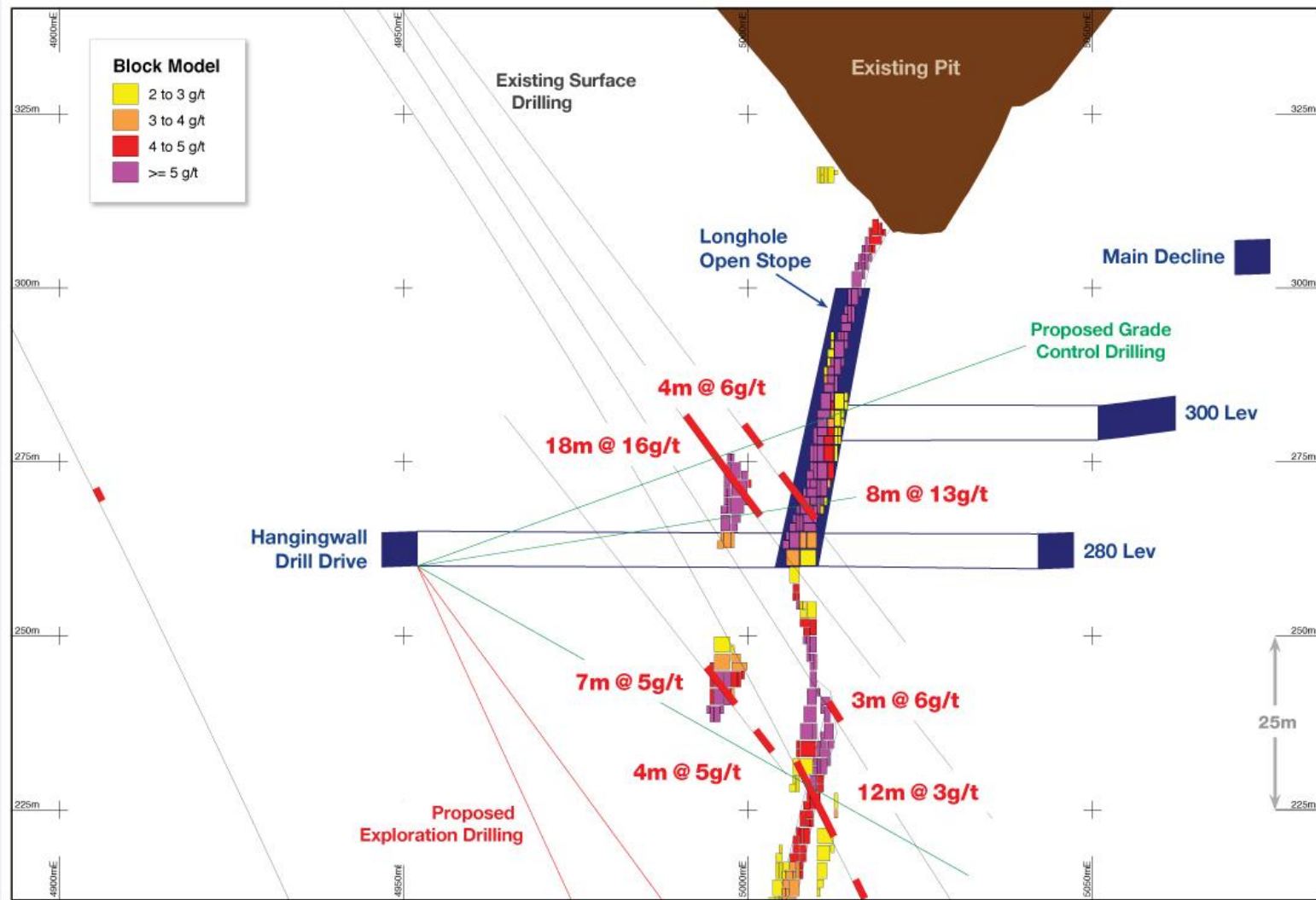
RED OCTOBER – UNDERGROUND



Trial Underground Mining:

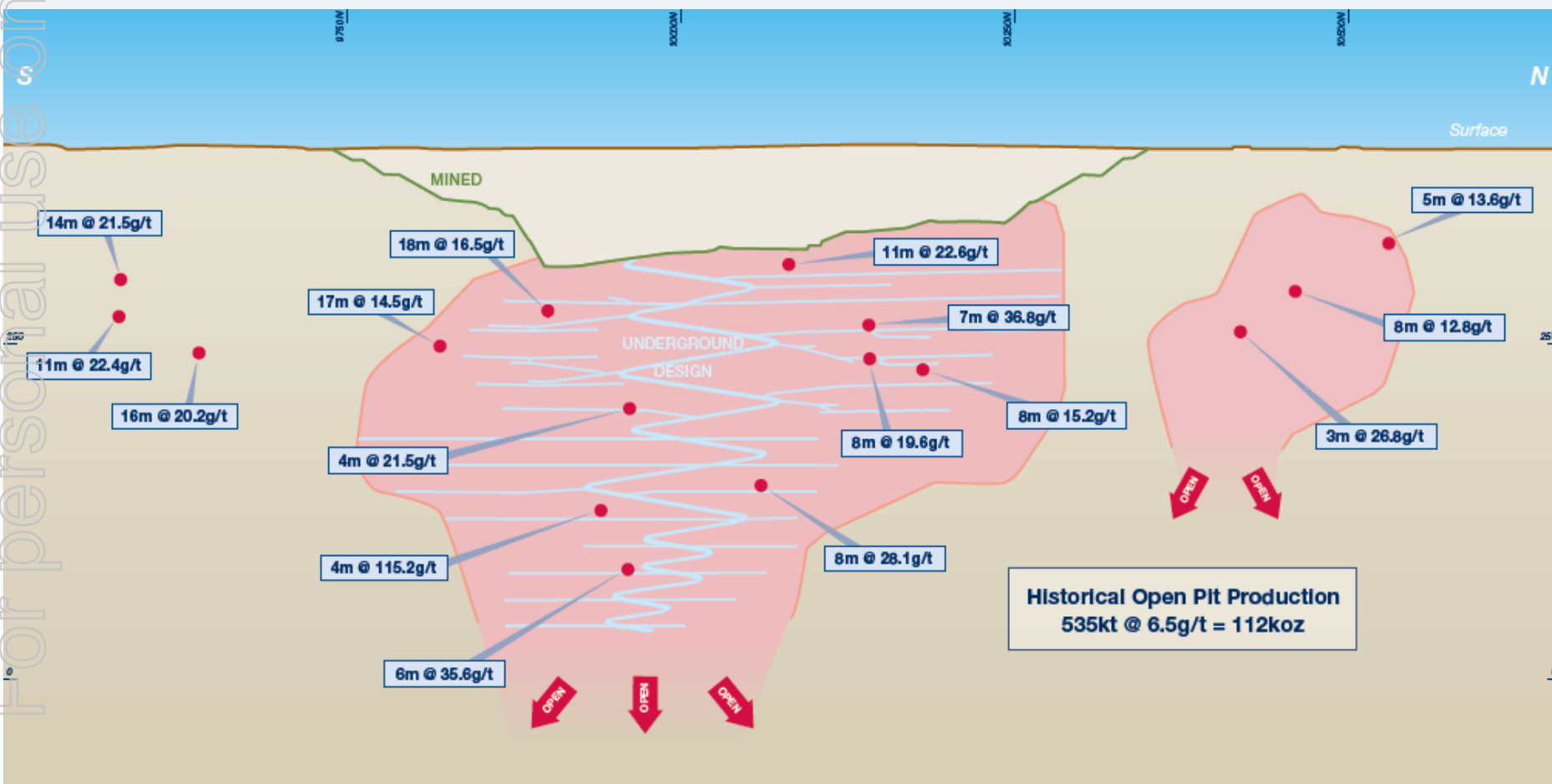
- Confirm geological interpretation and designs for underground operation
- Bulk samples for Carosue Dam plant to confirm metallurgical response and resources estimation
- Extensive diamond drilling campaign
- Test down dip and along strike extensions

RED OCTOBER – UNDERGROUND



EXPLORATION – RED OCTOBER

For personal use only





▶ Track record: Commissioning completed ahead of schedule & under budget >> de-risked

▶ Production: Steady state production of 100,000-120,000ozpa achieved

▶ Production Target: 150,000-160,000ozpa by 2015 via blending high grade UG ore >> known sources

▶ Risk Management: Down-side protection via puts, debt free, solid cash position (\$30m)

▶ Ounces: 3Moz in Resource, 880koz in Reserves (+7yrs minelife), Red October not yet in reserves

▶ Underground: Red October Project Development, Porphyry & Deep South studies ongoing

▶ Gate Keeper: No alternative processing plants within 100km – significant regional potential

▶ Exploration: Board approved \$12m budget for FY11

▶ Priority Targets: Red October - Sunrise Dam “gap”, Red October shear, Karari - Whirling Dervish deeps

CONTACT US



Saracen

www.saracen.com.au

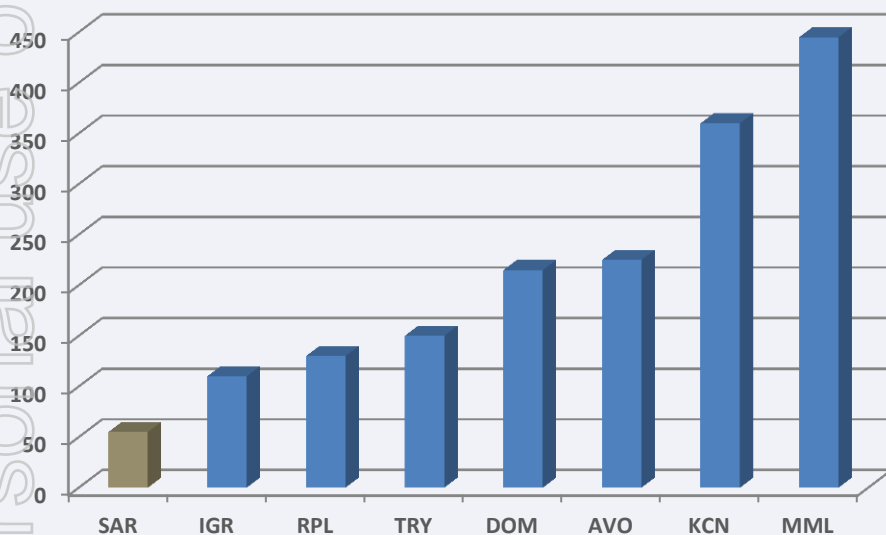
SARACEN MINERAL HOLDINGS LIMITED | ASX CODE: SAR



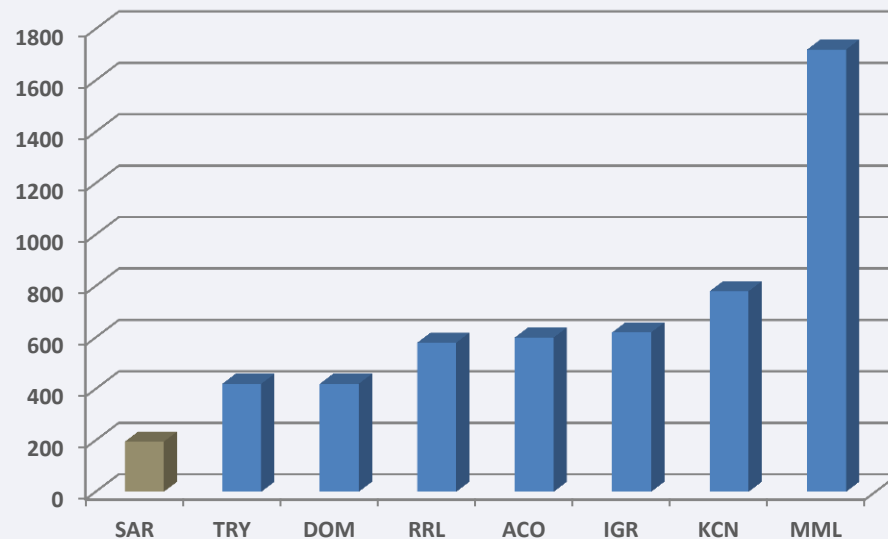
For personal use only

VALUE PROPOSITION

Attractive EV multiples implies >50% discount to market:



EV / Resource oz



EV / Reserve oz

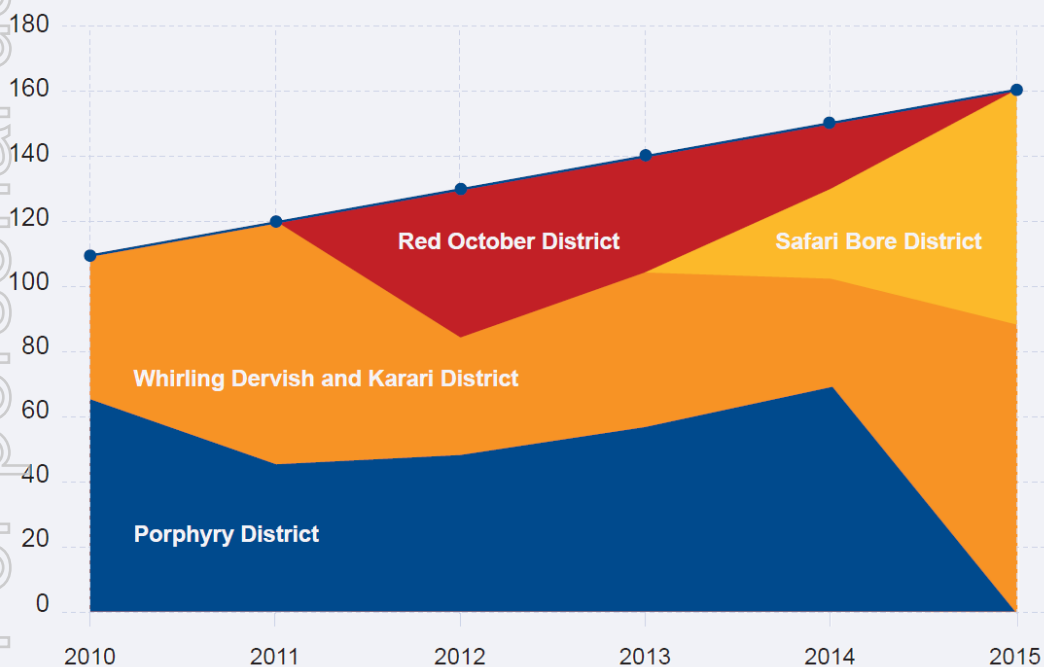


TARGET PRODUCTION

Target Production

150,000 – 160,000ozpa by 2015 via the inclusion of high grade underground ore blended with open pit mill feed; no plant upgrade required to achieve production target

Rec oz in (000's)



Production Profile

- ▶ Initial Production of 100,000 – 120,000ozpa
- ▶ Target Production of 150,000 – 160,000ozpa
- ▶ Porphyry & Whirling Dervish open pits provide initial production
- ▶ Red October trial UG Mining scheduled to commence FY12
- ▶ Deep South & Safari Bore to deliver high grade open pit & UG mill feed
- ▶ Target Production based on current SAR Resources, excludes potential acquisitions

RESOURCES & RESERVES

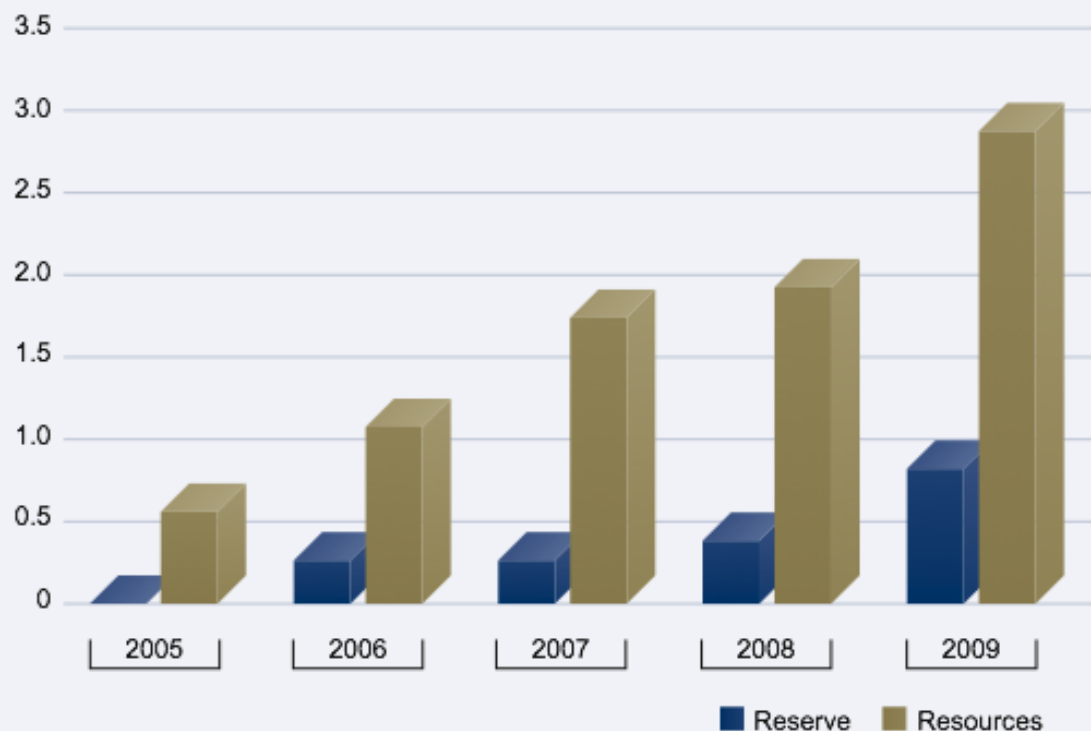
Resource Growth

+3 Million ounces

Since acquiring Carosue Dam in 2005, Saracen has quadrupled the Resource base through exploration and acquisition. Its Resource Base* stands at 3Moz (from 16 deposits) and 880,000oz of Ore Reserves (from 8 deposits), providing a significant Resource Base for future development.

*Further information regarding Saracen's Mineral Resources and Ore Reserves can be found on the Company's website. See 30 June 2010 Quarterly Report ASX announcement for more detail on Resources and Reserves. Estimates are subject to depletion and additions since last published statement.

Resources and Reserves (Moz)



RESOURCES & RESERVES

Resources*

55mt @ 1.7g/t = 3Moz

Deposit	Tonnes (kt)	Grade (g/t)	Ounces (koz)
Whirling Dervish	11,700	1.4	518
Porphyry	9,200	1.7	509
Wallbrook	5,100	1.4	228
Deep South	2,123	3.4	230
Mexico	301	2.3	22
Enterprise	1,379	1.8	82
Elliot's Lode	707	2.0	45
Karari	11,300	1.5	544
Million Dollar	6,004	1.1	211
Montys Dam	210	2.8	19
Margaret	1,024	1.4	45
Yundamindera	730	2.3	54
Safari Bore	2,810	2.2	201
Twin Peaks	547	4.2	73
Red October	756	8.4	203
Butcher Well	310	3.1	31
Surface Stockpiles	647	1.2	25
Measured	6,400	1.5	311
Indicated	35,710	1.7	1,995
Inferred	12,770	1.8	734
TOTAL	54,848	1.7	3,040

Reserves*

17mt @ 1.6g/t = 875Koz (~7yrs minelife)

Deposit	Probable (kt)	Grade (g/t)	Ounces (koz)
Whirling Dervish	4,312	1.6	217
Porphyry	2,755	1.6	142
Porphyry UG	643	3.4	70
Enterprise	491	1.9	29
Wallbrook	1,591	1.5	75
Million Dollar	682	1.2	25
Deep South	253	3.6	29
Safari Bore	594	2.1	40
Karari	4,811	1.4	223
Surface Stockpiles	647	1.2	25
TOTAL	16,779	1.6	875

* Resources and reserves do not allow for mining depletion from the Porphyry and Whirling Dervish mines and surface stockpiles processed since the commencement of operations in January 2010.

Competent persons statements

Resources Competent Person Statements:

The information in this release that relates to Mineral Resources for the Whirling Dervish, Porphyry, Wallbrook, Enterprise Group, Deep South, Karari and Safari Bore gold deposits has been compiled by Mr Lynn Widenbar BSc (Hons) MSc DIC MAusIMM. Mr Widenbar, who is a Member of the Australasian Institute of Mining and Metallurgy, is a full time employee of Widenbar and Associates Pty Ltd. Mr Widenbar has sufficient experience that is relevant to the styles of mineralisation and types of deposit under consideration and to the activity that he is undertaking to qualify as a Competent Person as defined in the 2004 edition of the Australasian Code for Reporting of Exploration Results, Minerals Resources and Ore Reserves. Mr Widenbar consents to the inclusion in this release of the matters based on his information in the form and context that the information appears.

The information in this release that relates to Mineral Resources for the Surface Stockpiles and Twin peaks has been compiled by Mr Colin Arthur BSc (Hons) BEd MAusIMM. Mr Arthur, who is a Member of the Australasian Institute of Mining and Metallurgy, is a consultant to Saracen Gold Mines Pty Ltd. Mr Arthur has sufficient experience that is relevant to the styles of mineralisation and types of deposit under consideration and to the activity that he is undertaking to qualify as a Competent Person as defined in the 2004 edition of the Australasian Code for Reporting of Exploration Results, Minerals Resources and Ore Reserves. Mr Arthur consents to the inclusion in this release of the matters based on his information in the form and context that the information appears.

The information in this release that relates to Mineral Resources for the Million Dollar gold deposit has been compiled by Dr Bielin Shi BSc MSc PhD MAusIMM. Dr Shi, who is a Member of the Australasian Institute of Mining and Metallurgy, was at the time of compilation a full time employee of Saracen Gold Mines Pty Ltd. Dr Shi has sufficient experience that is relevant to the styles of mineralisation and types of deposit under consideration and to the activity that he is undertaking to qualify as a Competent Person as defined in the 2004 edition of the Australasian Code for Reporting of Exploration Results, Minerals Resources and Ore Reserves. Dr Shi consents to the inclusion in this release of the matters based on his information in the form and context that the information appears.

Reserves Competent Person Statement:

The information in this release that relates to ore reserves has been compiled by Mr Chris Burton DipAppSc MAusIMM. Mr Burton, who is a Member of the Australasian Institute of Mining and Metallurgy, is a full time employee of Saracen Gold Mines Pty Ltd. Mr Burton has sufficient experience that is relevant to the styles of mineralisation and types of deposit under consideration and to the activity that he is undertaking to qualify as a Competent Person as defined in the 2004 edition of the Australasian Code for Reporting of Exploration Results, Minerals Resources and Ore Reserves. Mr Burton consents to the inclusion in this release of the matters based on his information in the form and context that the information appears.