



A.C.N: 108 476 384

2 Corporation Place
Orange
NSW 2800

Phone: +61 2 6361 4700
Facsimile: +61 2 6361 4711
Email: office@ytcresources.com

1 September 2010

The Manager
Company Announcements Office
Australian Securities Exchange
20 Bridge Street
SYDNEY NSW 2000

Dear Sir / Madam,

Mining NSW Conference Presentation

Please find attached for release to the market the presentation to be given today by YTC Resources Ltd CEO, Rimas Kairaitis, at the Mining NSW Conference in Orange NSW.

Yours faithfully,

A handwritten signature in blue ink, appearing to read 'R Willson', is written over a light blue horizontal line.

Richard Willson
Company Secretary

For personal use only

For personal use only

HERA PROJECT



MINING NSW 1 SEPTEMBER 2010



Au

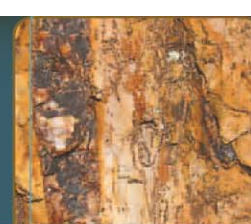


Pb
Zn



DISCLAIMER

Au



Pb
Zn

Cu

Forward Looking Statements

This presentation includes forward-looking statements that have been based on the Company's current expectations about future events. These forward-looking statements are, however, subject to risks, uncertainties and assumptions that could cause actual results, performance or achievements to differ materially from the expectations expressed or implied in such forward-looking statements.

The Company does not make any representations and provides no warranties concerning the accuracy of such forward-looking statements, and disclaims any obligation to update or revise any forward looking statements based on new information, future events or otherwise except to the extent required by applicable laws.

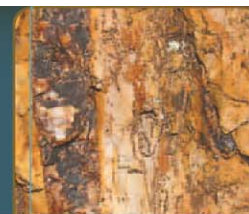
Competent Persons Statement

The information in this presentation that relates to Exploration Results is based on information compiled by Rimas Kairaitis, who is a Member of the Australasian Institute of Mining and Metallurgy. Rimas Kairaitis has sufficient experience which is relevant to the style of mineralisation and type of deposit under consideration and to the activity which he is undertaking to qualify as a Competent Person as defined in the 2004 Edition of the 'Australasian Code for Reporting of Exploration Results, Mineral Resources and Ore Reserves.'

Mr Kairaitis consents to the inclusion in this report of the matters based on his information in the form and context in which it appears.

YTC CORPORATE SNAPSHOT

Au



Pb
Zn

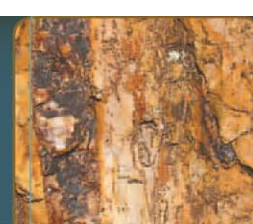


For personal use only

Shares on issue	164.2 m
Options on issue	5.925m
Market Capitalisation (at 23.5 c/share)	\$39m
Cash (31 March 2010)	\$8m
Enterprise Value	\$25 m

Substantial Shareholders	% Ownership
Yunnan Tin Group	15%
Wonderful Investments	9.75%
China Yunnan Tin Metals (HK)	5.95%

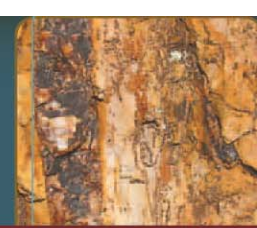




- YTC is completing a Definitive Feasibility Study (DFS) on the Hera Project
- Hera Project is a high grade Au-Pb-Zn-Ag
- Located in the Cobar Basin - a world class gold and base metal province
- +560,000oz Au equivalent resource and growing as drilling continues
- DFS due for completion September 2010
- Near term development – Potential Metal production 2nd half CY 2011
- ‘Base Case’ annual production of 45,800 ounces gold equivalent
- Permitting in-place for decline development
- Huge exploration upside – the Hera to Nymagee corridor

HERA PROJECT HISTORY

Au



Pb
Zn



Cu

First discovered by Pasminco in 2001

Hera gold-base metals deposit advanced through a positive Pre-Feasibility Study in 2005 by previous owners Triako.

YTC now completing a Definitive Feasibility Study (DFS) in a metal price environment nearly 2 times the 2005 price environment.

Previous owners CBH completed the permitting to construct a mine decline to the first mining production levels, substantially de-risking the permitting of full scale mining operations.

The Hera deposit remains undeveloped due to corporate circumstance, not project fundamentals.

HERA LOCATION

LOW-RISK DEVELOPMENT IN AN ESTABLISHED MINING PROVINCE

Au

Pb
Zn

Cu

- Hera within the established Cobar mining district
- Underground mining decline already permitted
- 3 major operating mines in the district with toll treatment options



CSA Mine – Cu-Ag



The Peak – Au-Cu



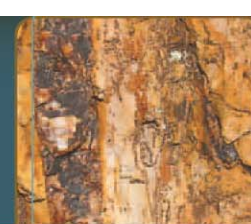
Endeavor – Pb-Zn-Ag-Cu

For personal use only

HERA PROJECT - RESOURCE

JUNE 2010

Au



Pb
Zn

Cu

- YTC released an updated Resource Estimation in June 2010
- Resources are calculated using a “net-recoverable value”* cut-off, which represents the expected tonnage to be mined and processed at a profit.
- The following Resources have been released

Hera Project – Global Resource

Cutoff	Category	Tonnes	Au g/t	Ag g/t	Pb %	Zn %	Cu %	Au_Eq g/t	Contained Au Ozs_Eq
\$125/tonne	Indicated	1,584,000	4.1	14.7	2.7	3.5	0.2	7.9	
	Inferred	596,000	3.7	18.0	2.8	5.0	0.1	8.2	
TOTAL		2,180,000	4.0	15.6	2.8	3.9	0.2	8.0	560,710

Hera Project – High Grade Resource

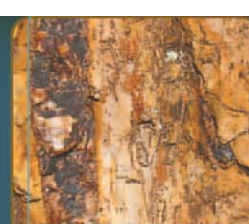
Cutoff	Category	Tonnes	Au g/t	Ag g/t	Pb %	Zn %	Cu %	Au_Eq g/t	Contained Au Ozs_Eq
\$200/tonne	Indicated	784,000	6.0	17.1	3.1	4.0	0.2	10.3	
	Inferred	352,000	4.7	20.5	3.3	6.3	0.1	10.1	
TOTAL		1,136,000	5.6	18.1	3.2	4.7	0.2	10.2	372,538

* Net Recoverable Value (NRV) = metal grade x metal price x recovery x payability (net of smelter and transport costs)

HERA PROJECT - RESOURCE

JUNE 2010

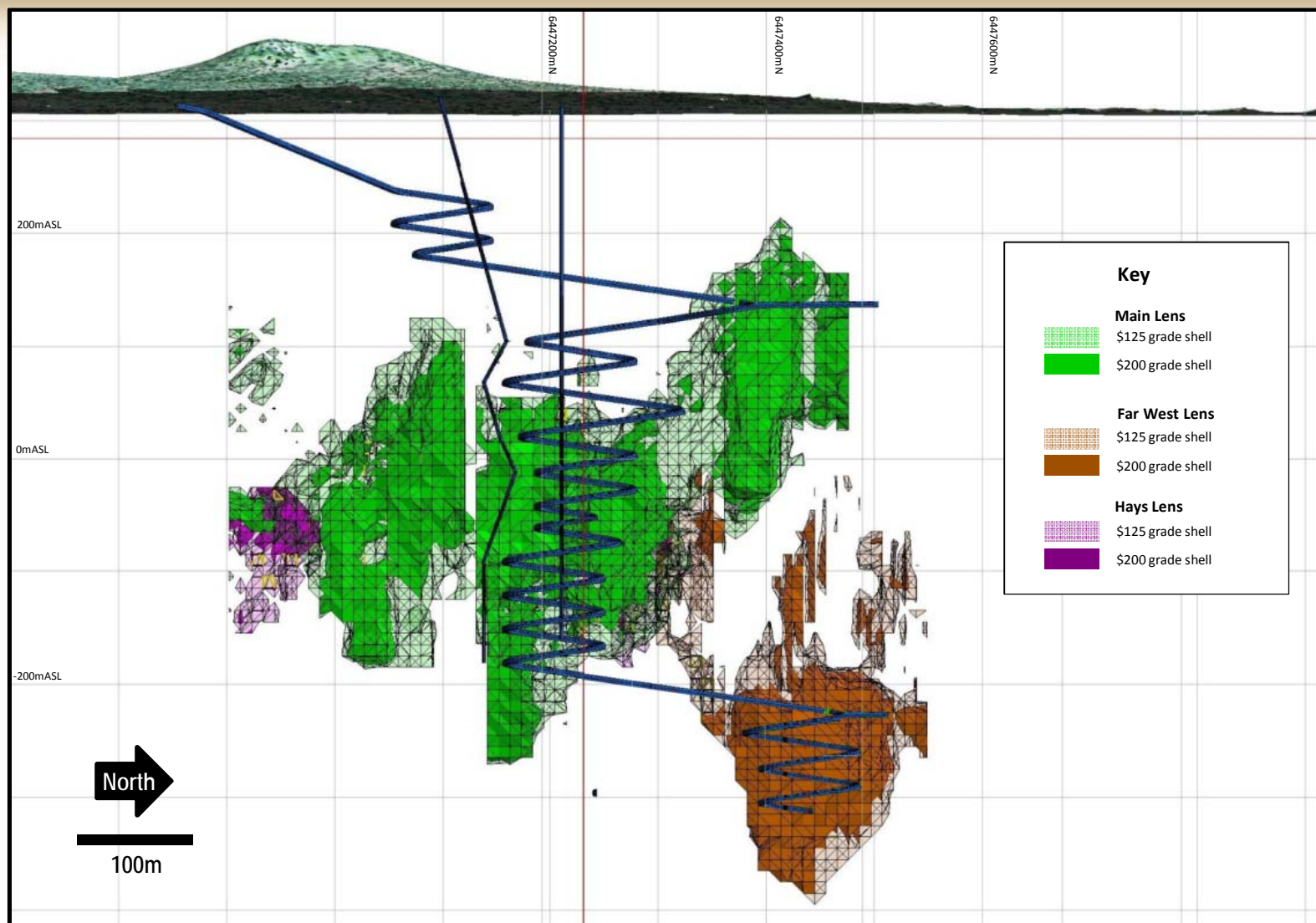
Au



Pb
Zn

Cu

For personal use only



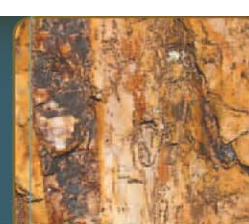
Hera Gold Project Resource Grade Shells – Long Section looking west

with Indicative mine development: Grid: GDA – Zone 55 - Scale as Shown

HERA PROJECT - RESOURCE

JUNE 2010

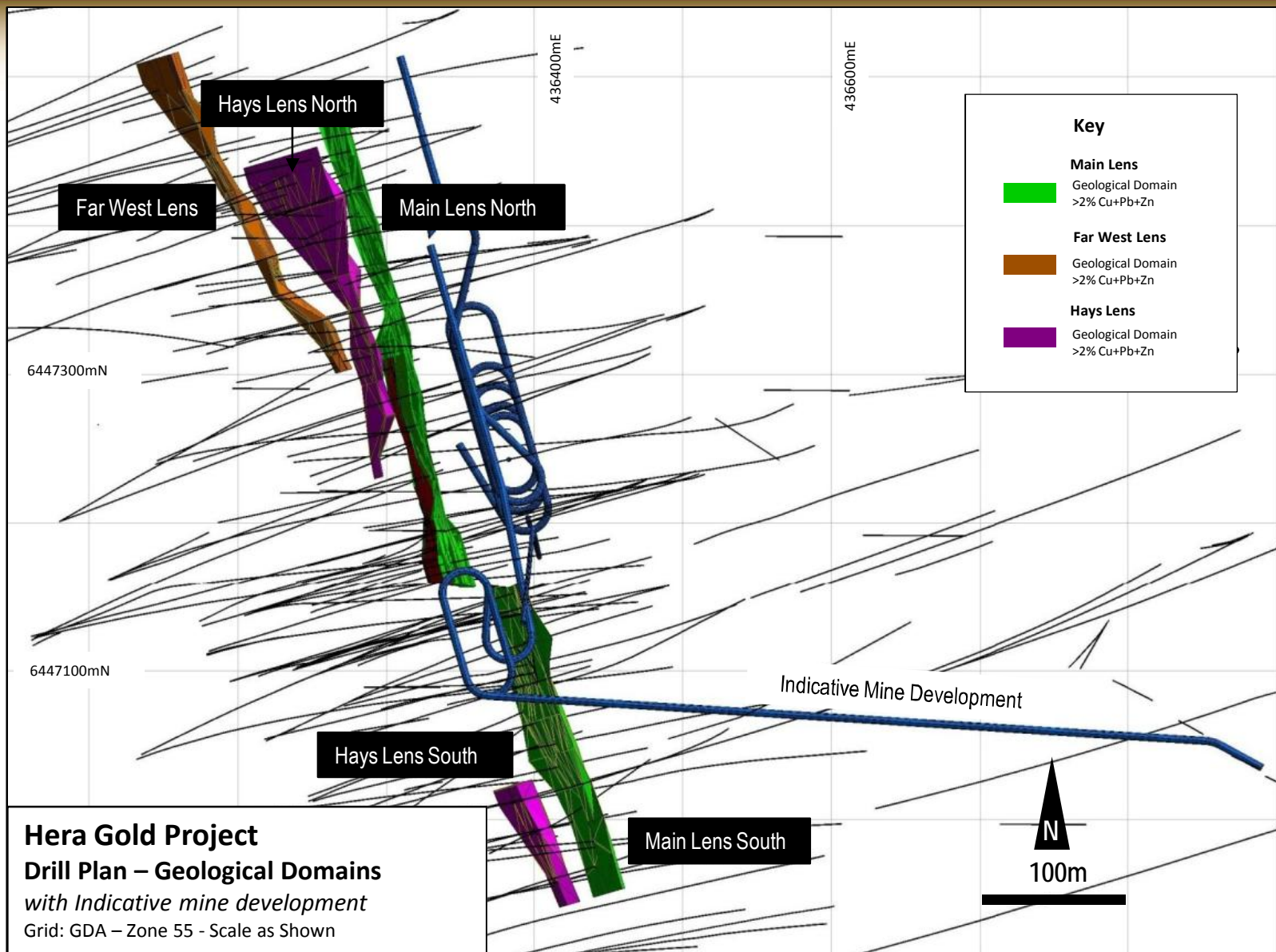
Au



Pb
Zn

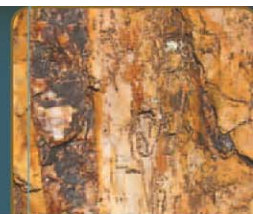
Cu

For personal use only



HERA FLY THRU

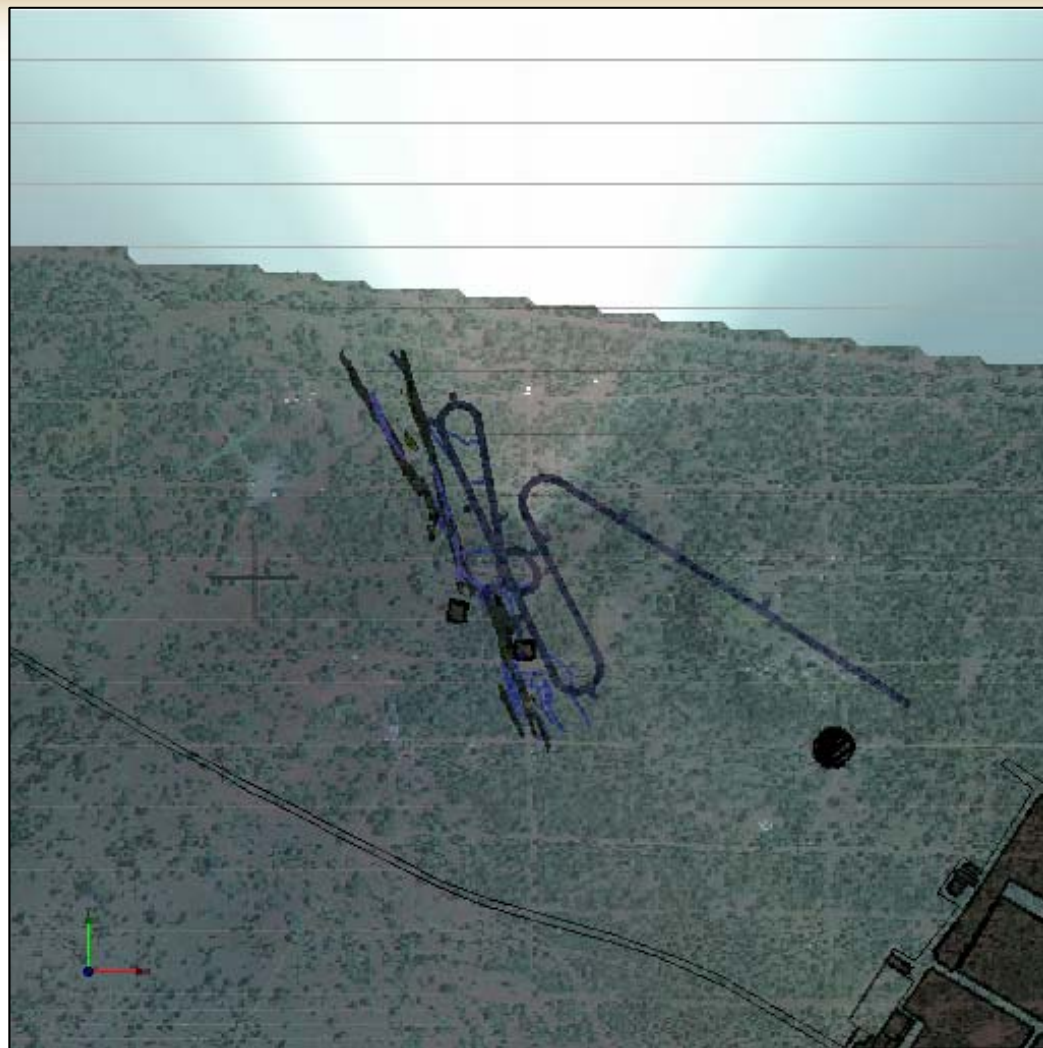
Au



Pb
Zn

Cu

For personal use only



HERA PROJECT EXTENSIONS

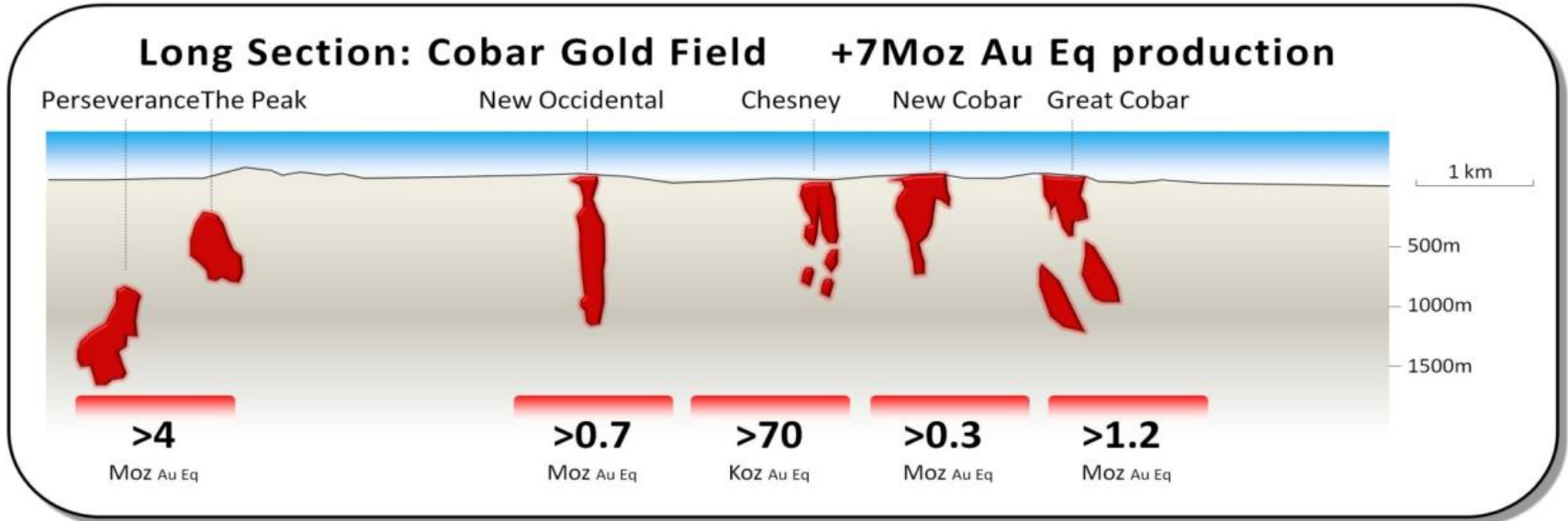
Au



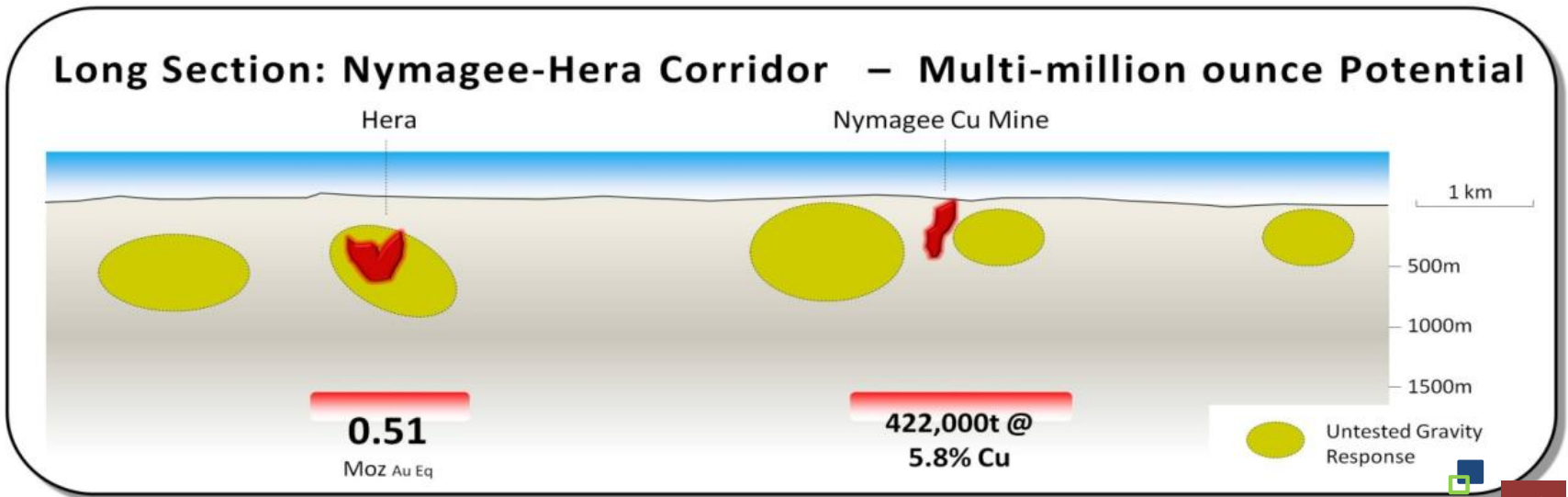
Pb
Zn

Cu

For personal use only



The Hera-Nymagee corridor and Cobar Gold Field are hosted on the same geological structure, 90km apart



HERA PROJECT EXTENSIONS

Au

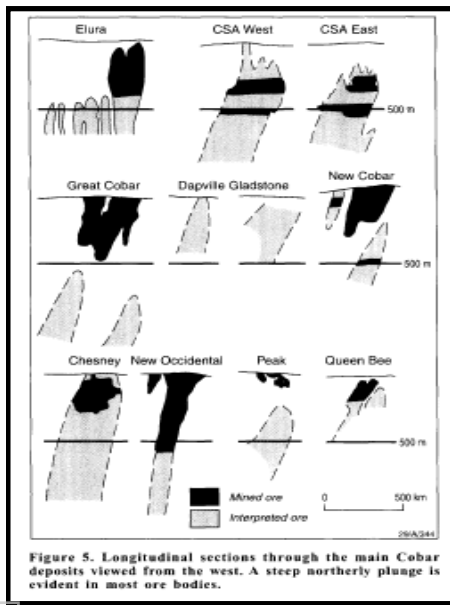


Pb
Zn

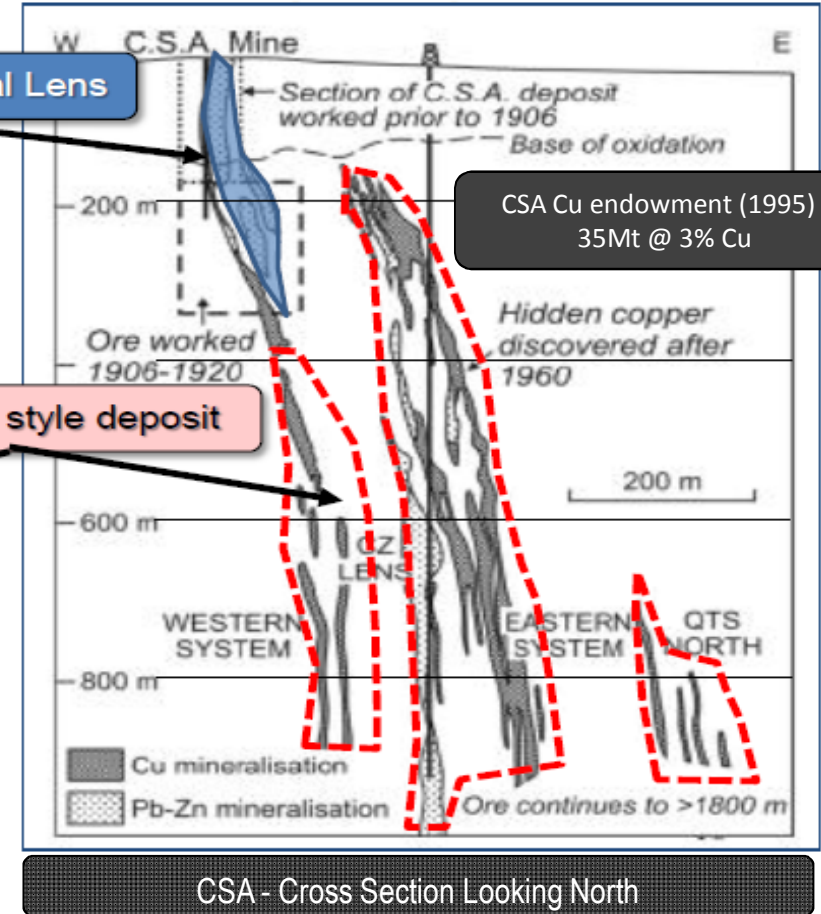
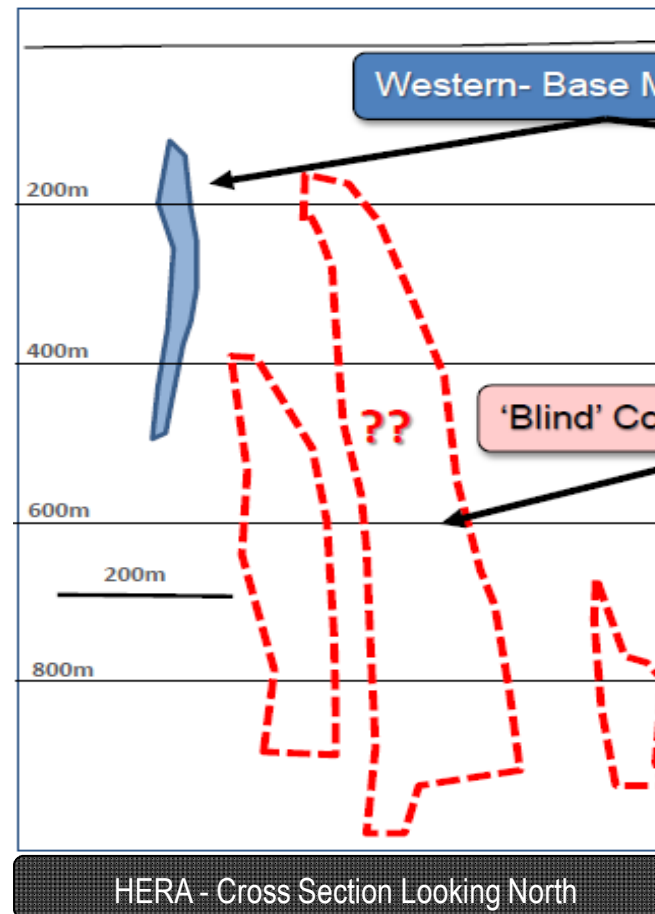
Cu

For personal use only

The Hera Deposit represents an exploration analogue to CSA and other Cobar Deposits – Major depth potential



Longitudinal Section through main Cobar deposits from the west, A steep northerly plunge is evident in most ore-bodies.



CSA Cu endowment (1995) :
35Mt @ 3% Cu

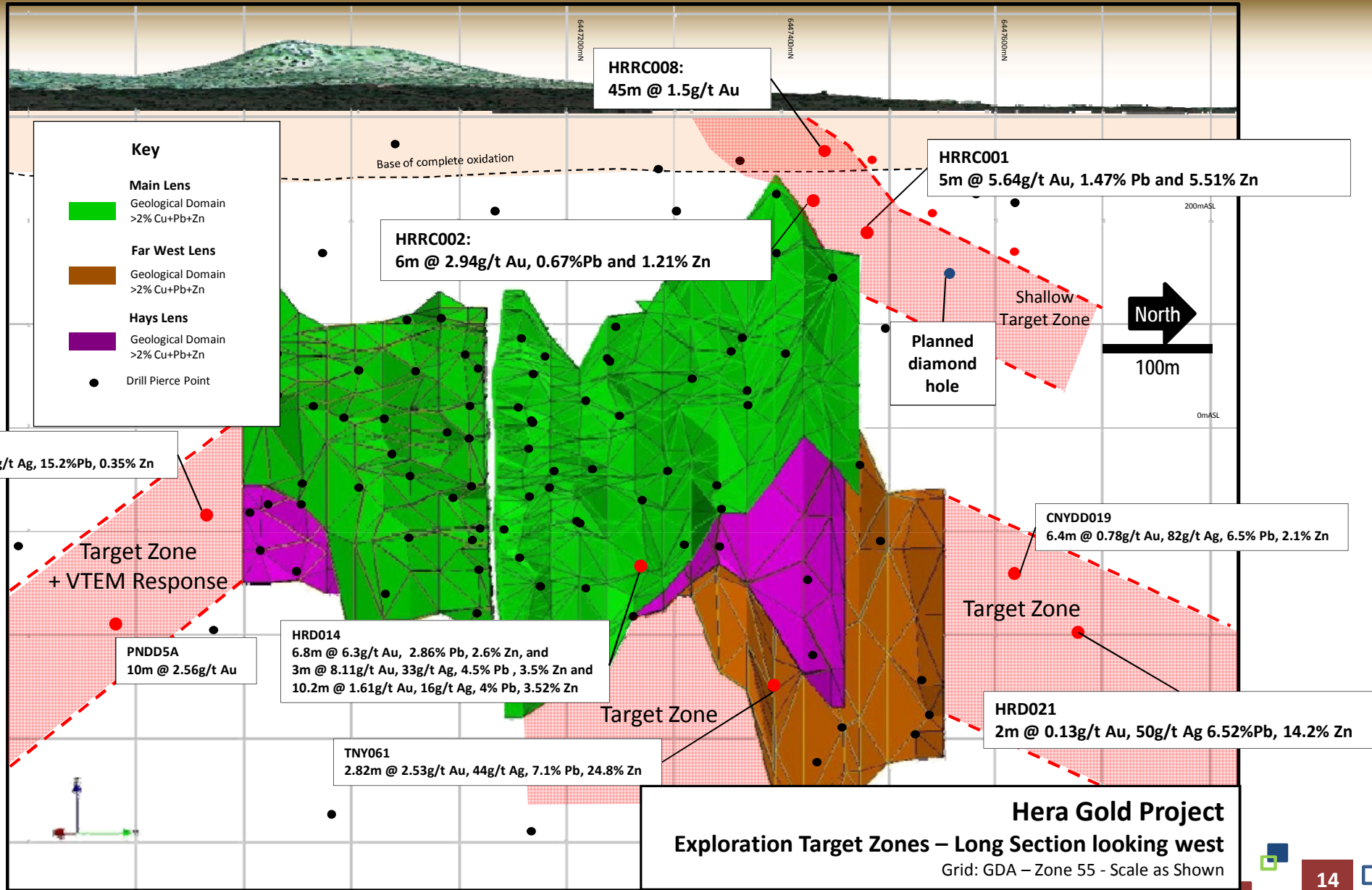
HERA PROJECT EXTENSIONS

Au

Pb
Zn

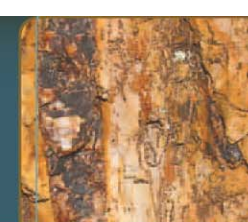
Cu

For personal use only



HERA PROJECT EXTENSIONS

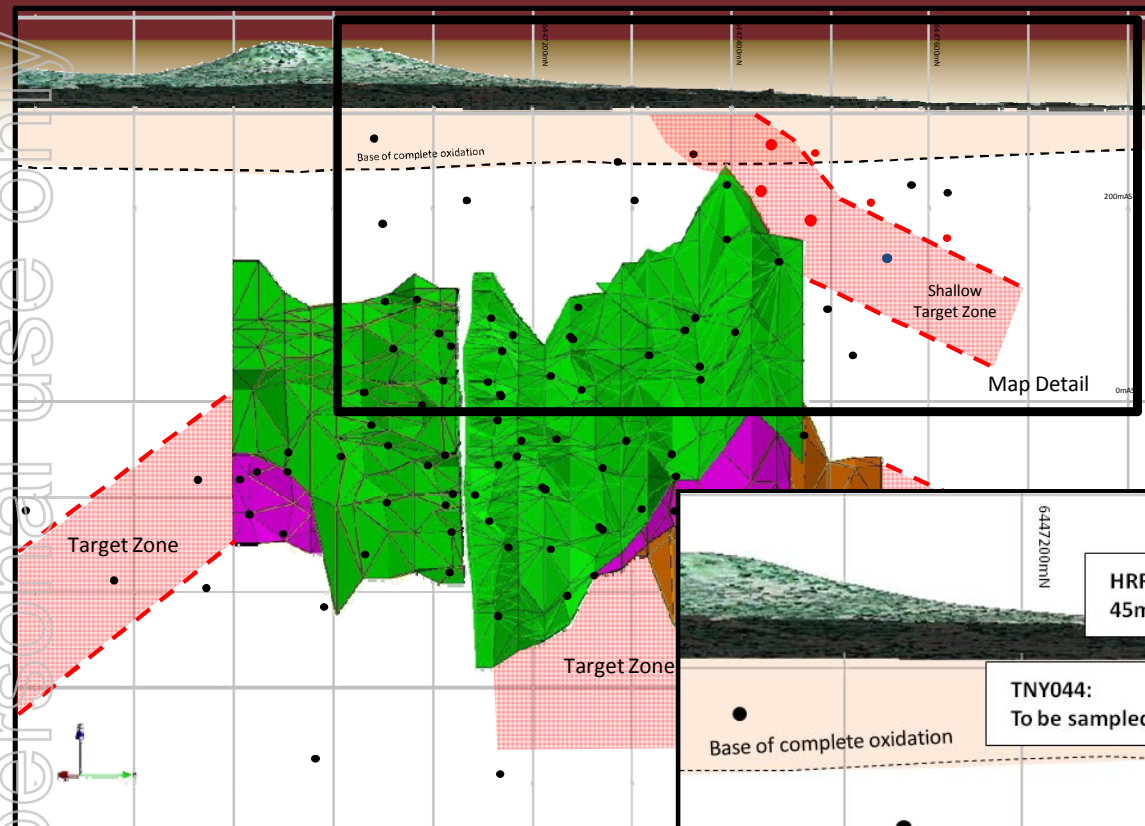
Au



Pb
Zn

Cu

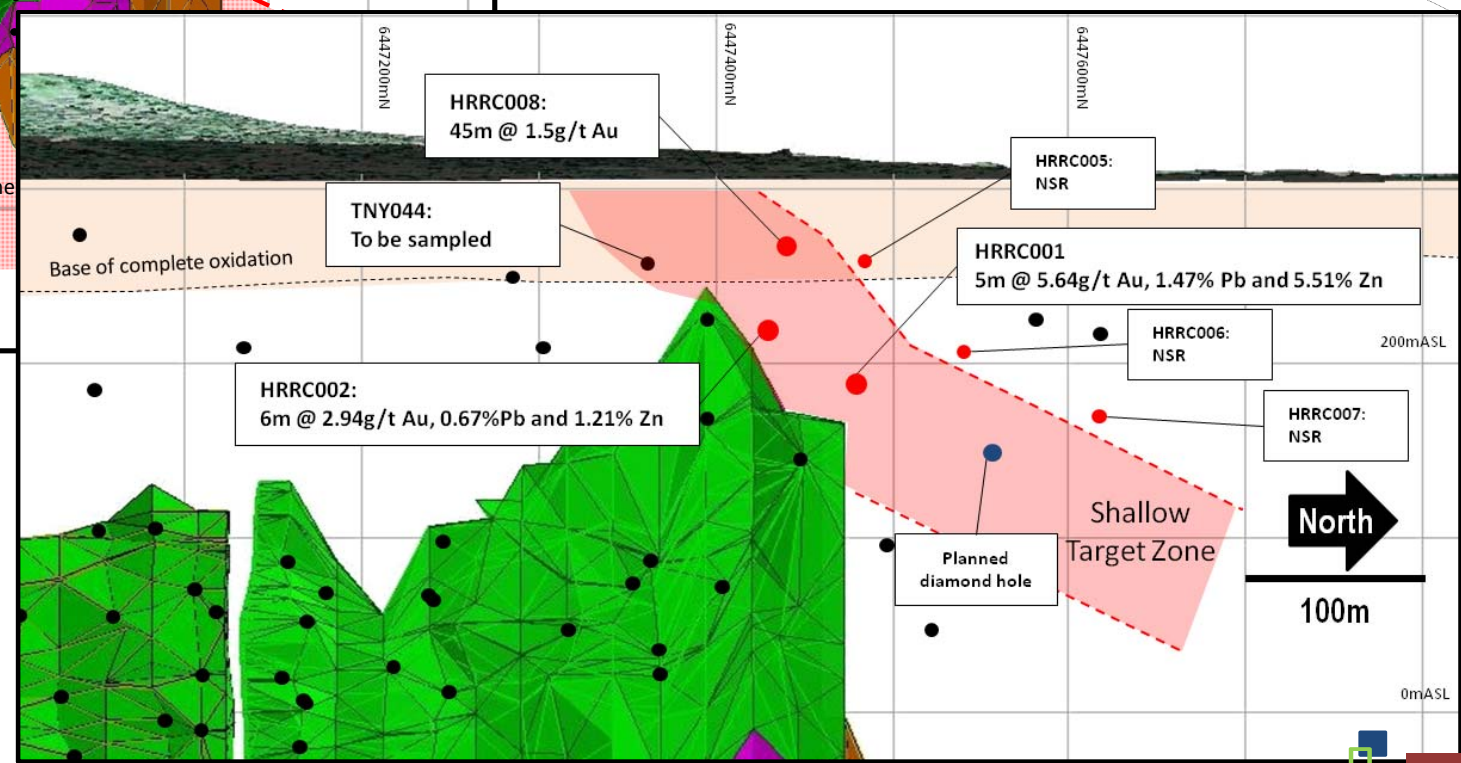
For personal use only



Hera Gold Project
Shallow North Target– Long Section looking West
 Grid: GDA – Zone 55 - Scale as Shown

Key

- **Main Lens**
Geological Domain
>2% Cu+Pb+Zn
- **Far West Lens**
Geological Domain
>2% Cu+Pb+Zn
- **Hays Lens**
Geological Domain
>2% Cu+Pb+Zn
- Drill Pierce Point
- New Result
- NSR No Significant Result



HERA PROJECT

EXTENSIONS – NYMAGEE COPPER MINE

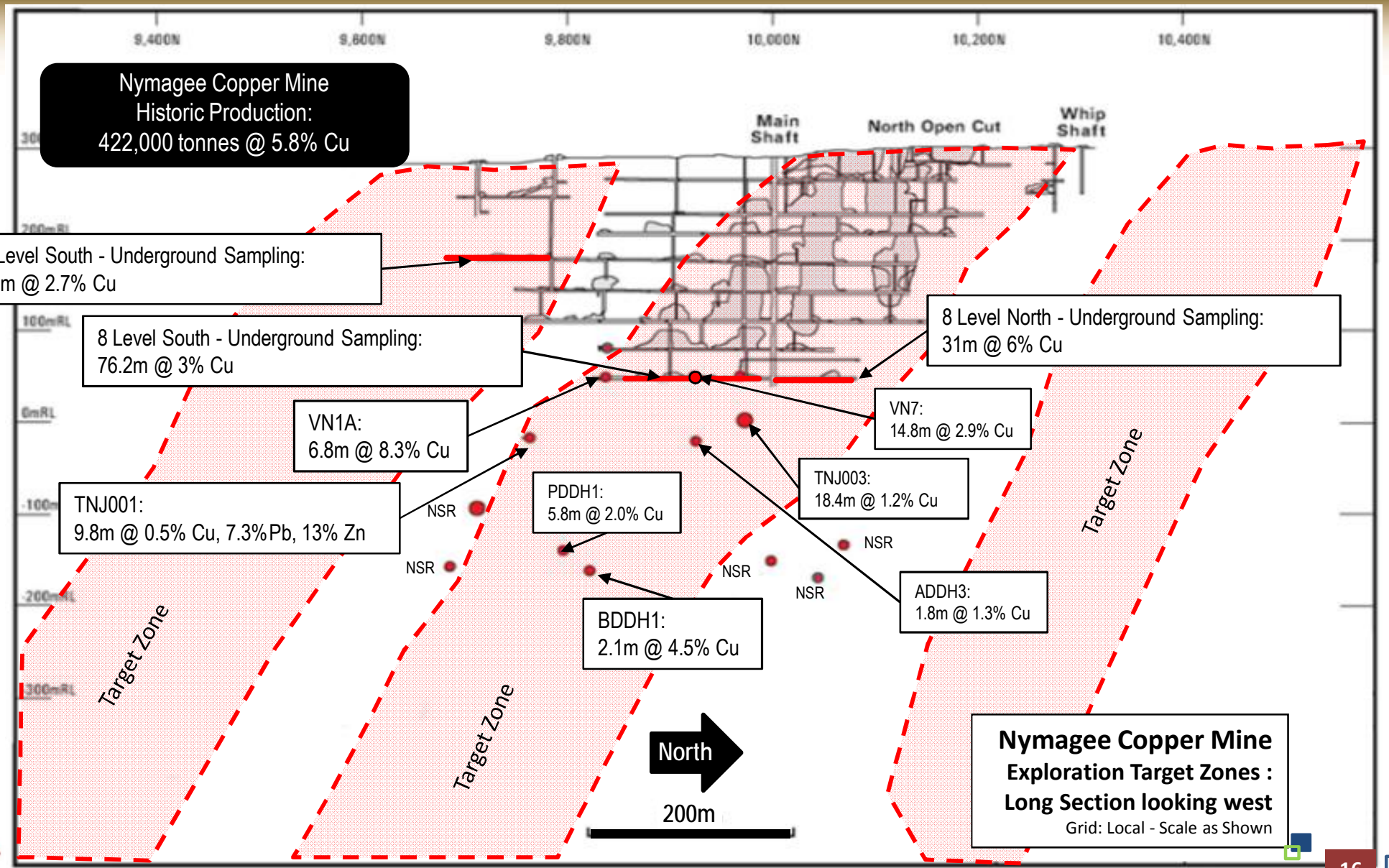
Au

Pb
Zn

Cu



For personal use only

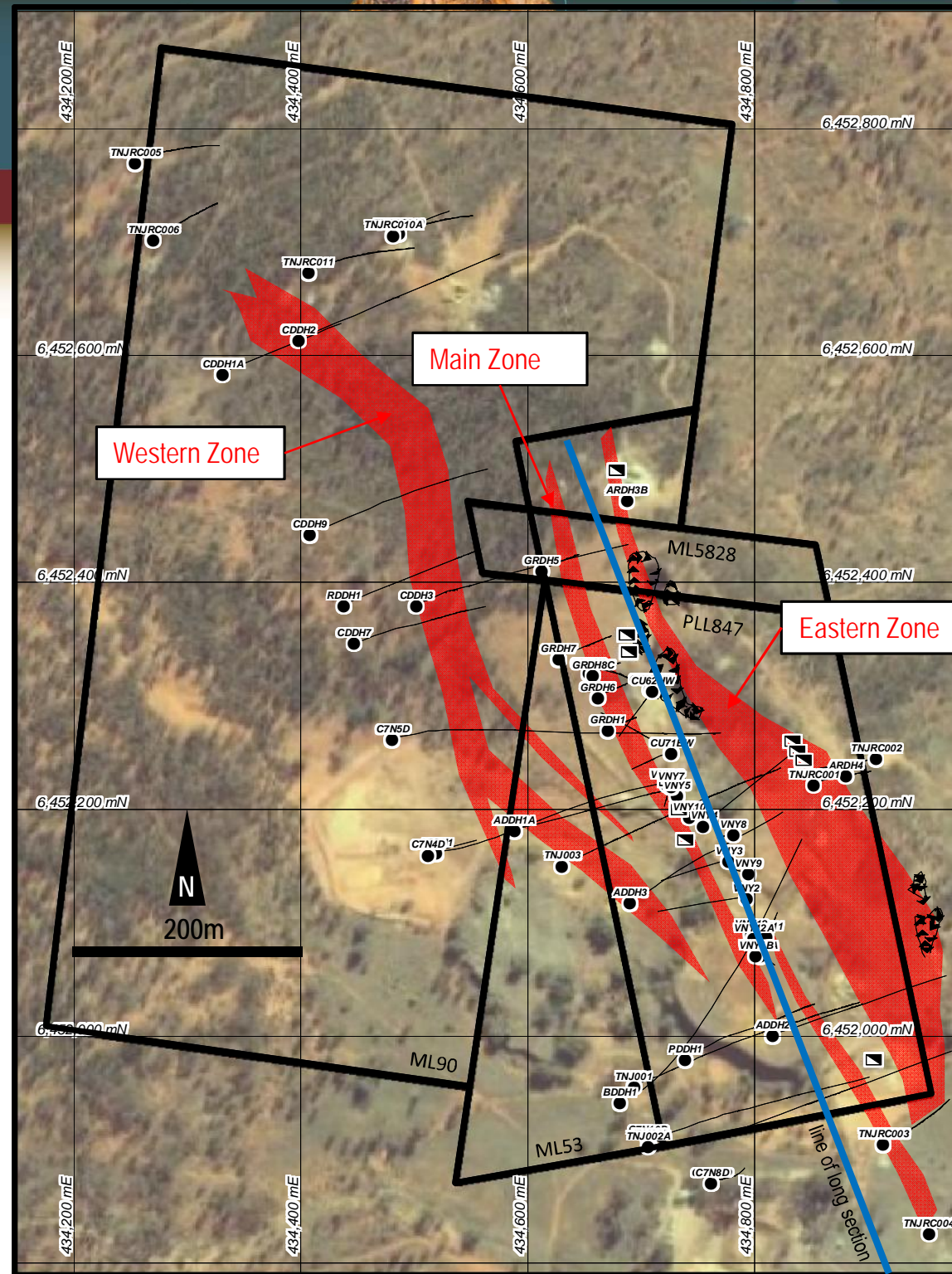


HERA PROJECT

EXTENSIONS – NYMAGEE COPPER MINE

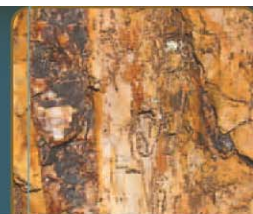
Huge Potential to Expand on Nymagee non-JORC Resource

- Drilling to start in July 2010
- Potential for 'CSA' style copper targets
- Ag & Au values not yet known.



NYMAGEE FLY THRU

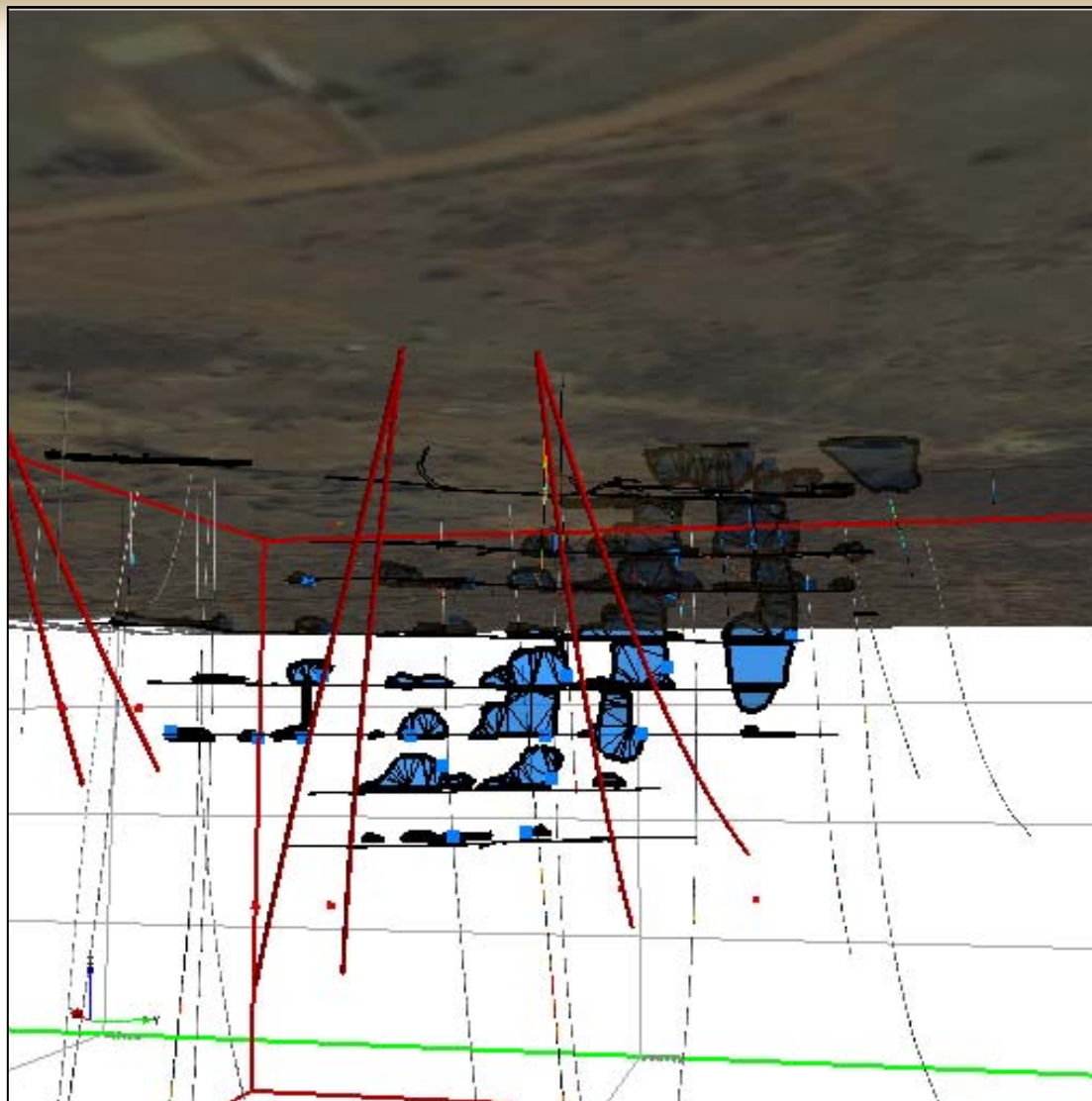
Au



Pb
Zn

Cu

For personal use only



NYMAGEE DRILLING

Au



Pb
Zn

Cu

For personal use only



- 2 Rigs now drilling on Nymagee Mine

HERA PROJECT EXTENSIONS

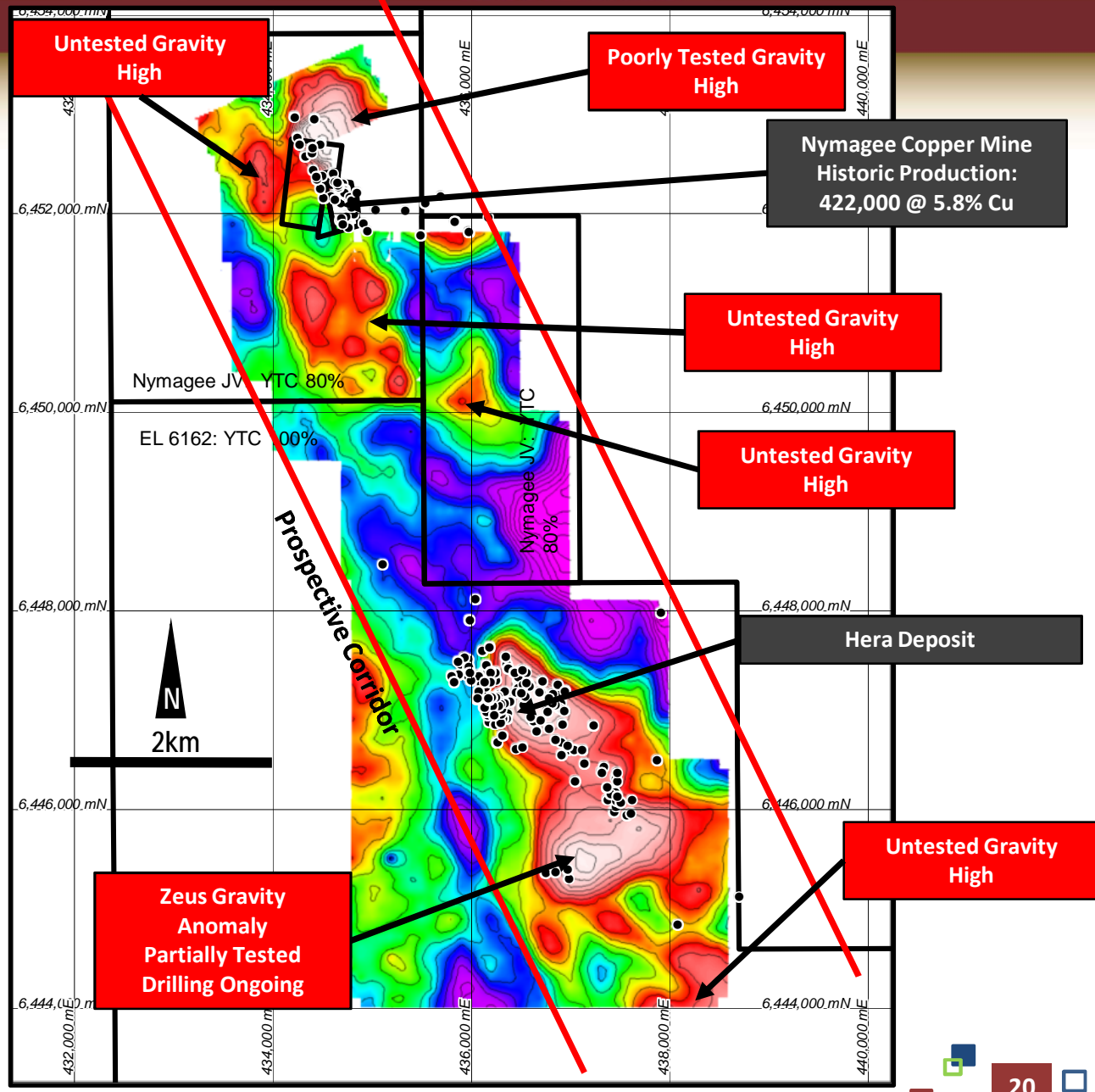
Au

Pb
Zn

Cu

For personal use only

- Gravity survey has uncovered numerous new targets
- Potential to link Hera & Nymagee in a continuous corridor




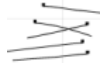


HERA PROJECT

EXTENSIONS

For personal use only

Key

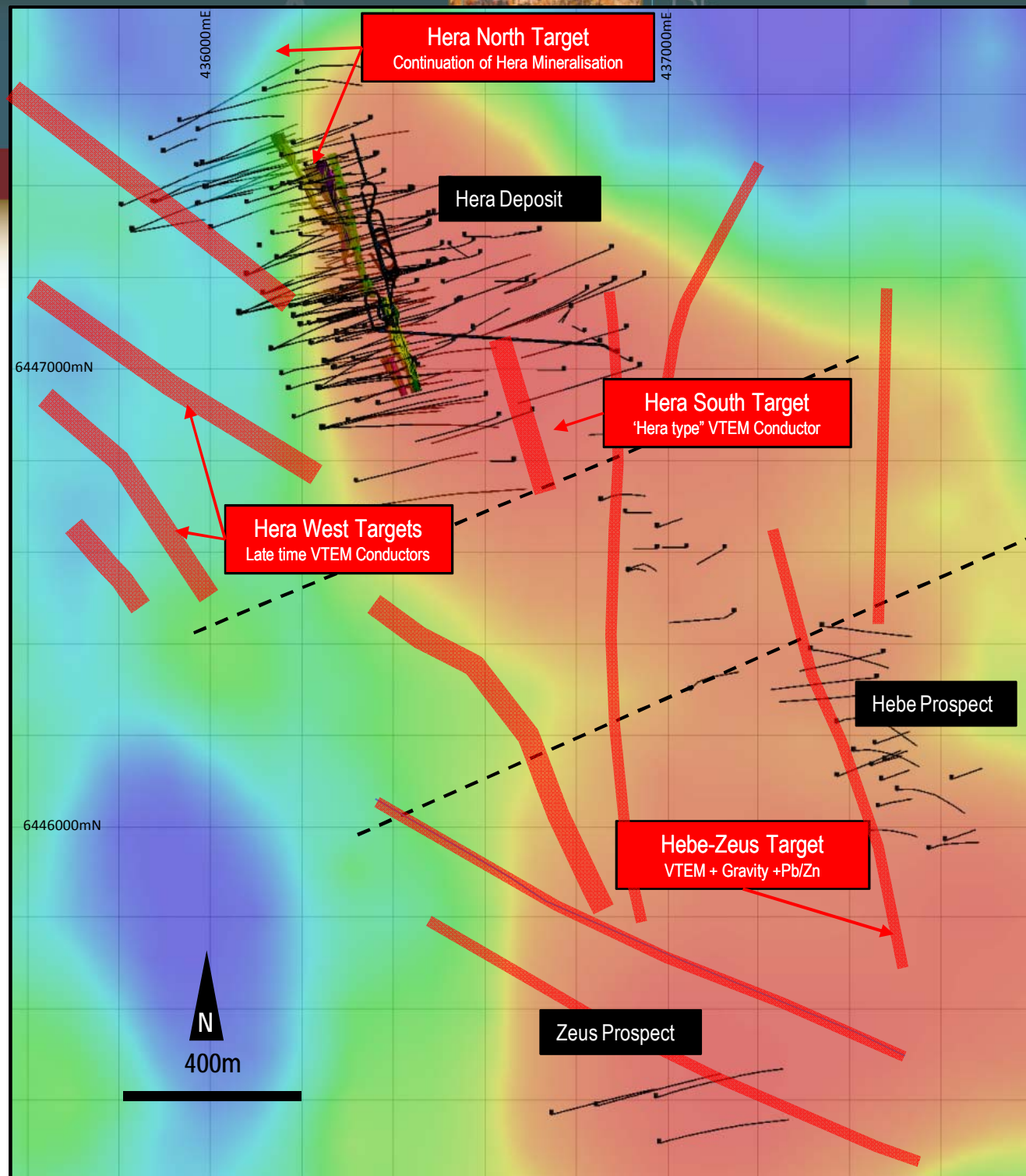
-  VTEM Anomaly _ Priority 1
-  VTEM Anomaly _ Priority 2
-  Drill Target
-  Drill Holes

Hera Gold Project

Drill Targets – Hera Deposit Area

Showing VTEM Conductors & Gravity Image

Grid: GDA – Zone 55 - Scale as Shown



HERA DFS

SIMPLE PROCESS FLOW SHEET

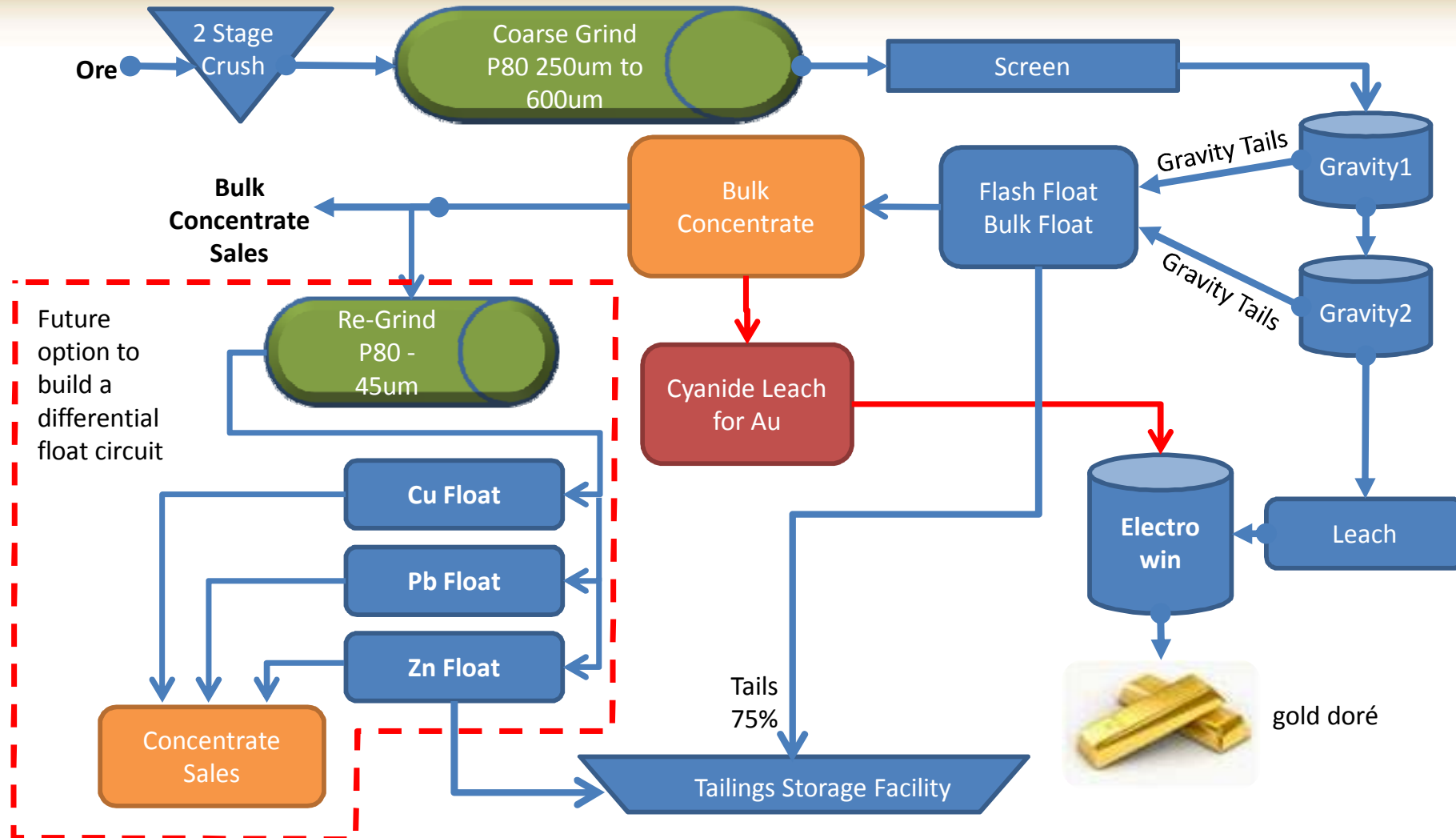
Au

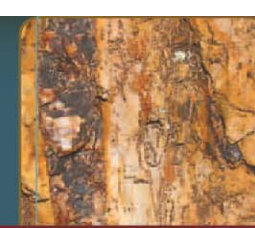


Pb
Zn



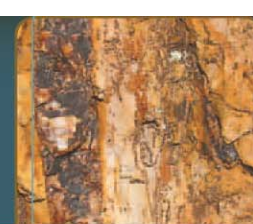
For personal use only





Simple flow sheet designed to maximise gold revenue

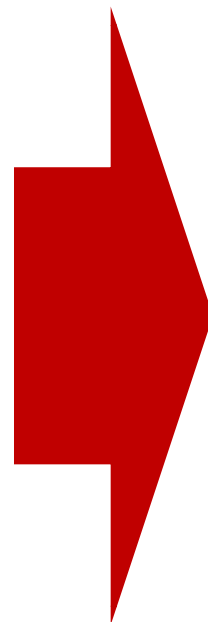
- Coarse grind (250-600 μ m)
- Gravity Gold circuit to gold doré
- Flotation of gravity tail to produce bulk sulphide concentrate
- Cyanide leach of bulk sulphide concentrate to gold doré
- Wash and sale of bulk sulphide concentrate.
- Option for future differential float circuit



For personal use only

HERA IS.....

- Robust, high grade, low risk gold-base metal development project with metal production by 2nd half 2011
- World class location
- +500,000oz gold equivalent resource and growing as drilling continues

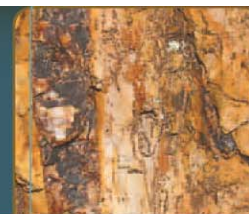


WHAT HERA CAN BECOME.....

- Major “Cobar-style” mineral system with extensive vertical and lateral continuation
- Hera-Nymagee corridor could rival the Cobar Gold Field – systematic exploration effort ongoing.

THANK YOU

Au



Pb
Zn

Cu

For personal use only

YTC Resources Limited:
ASX:YTC
Rimas Kairaitis
Chief Executive Officer
2 Corporation Place
ORANGE NSW 2800
T: +61 2 6361 4700
E: office@ytcresources.com
www.ytcresources.com

