



# Working with Partners – JV and Off-Take Arrangements

3<sup>rd</sup> Lithium Supply and Markets Conference  
Toronto – January 2011

By Iggy Tan  
Managing Director

NOT FOR RELEASE IN THE UNITED STATES

For personal use only



*meeting a lithium future*

This announcement has been prepared for publication in Australia and may not be released in the U.S. This announcement does not constitute an offer of securities for sale in any jurisdiction, including the United States, and any securities described in this announcement may not be offered or sold in the United States absent registration or an exemption from registration under the United States Securities Act of 1933, as amended. Any public offering of securities to be made in the United States will be made by means of a prospectus that may be obtained from the issuer and that will contain detailed information about the company and management, as well as financial statements.

#### Caution Regarding Forward Looking Statements

Statements regarding Galaxy's plans with respect to its mineral properties are forward-looking statements. There can be no assurance that Galaxy's plans for development of its mineral properties will proceed as currently expected. There can also be no assurance that Galaxy will be able to confirm the presence of additional mineral deposits, that any mineralization will prove to be economic or that a mine will successfully be developed on any of Galaxy's mineral properties. Circumstances or management's estimates or opinions could change. The reader is cautioned not to place undue reliance on forward-looking statements.

The following presentation represents Galaxy's management's best judgment at the time of presentation. The contents include forward looking statements prepared on the basis of assumptions which may prove to be incorrect. This presentation should not be relied upon as recommendation or forecast by Galaxy Resources Limited. No representation or warranty is made as to accuracy, completeness or reliability of the information

#### Competent Persons

Information that relates to Mineral Resources in this report is based on information compiled by Mr. Robert Spiers who is a full time employee of Hellman & Schofield Pty Ltd. Information that relates to Exploration Results including exploration data and geological interpretations is based on information compiled by Mr Philip Tornatora who is a full time employee of Galaxy. Mr Spiers and Mr Tornatora are Members of the Australian Institute of Geoscientists and qualify as Competent Persons as defined in the 2004 JORC Code. Mr. Spiers and Mr Tornatora consent to the inclusion in this report of the matters based on their information in the form and context in which it appears.

Information in this report that relates to Mineral Ore Reserves is based on information compiled by Mr. Glenn Williamson who is a full time employee of Mining Resources Pty Ltd. Mr. Williamson has sufficient experience which is relevant to the style of mineralisation and type of deposit under consideration and to the activity he is undertaking to qualify as a Competent Person as defined in the 2004 JORC Code. Mr. Williamson consents to the inclusion in this report of the matters based on his information in the form and context in which it appears.

# LITHIUM IS NOT A COMMODITY

- ◆ Myth: As long as I can make Li Carb, I can sell it
- ◆ High tech downstream products
- ◆ Complex qualification process
- ◆ Technical support and marketing
- ◆ Supply reliability
- ◆ Relationships
- ◆ Pricing
- ◆ High Barrier of Entry

## PRICE SENSITIVITY



Cost of Lithium in a battery is less than 2-3%

No Lithium, no Lithium ion battery

If Lithium cost doubled (+US\$6,000/t LC) it would add only **US\$3.70** to this US\$185 battery

For personal use only

# Vision for the Lithium Industry

# LITHIUM INDUSTRY

- ✦ Instead of trying to bash each other up
- ✦ We need to “Grow Up”
- ✦ Industry needs to take a “big picture” strategic outlook
- ✦ Focus on developing demand for Lithium worldwide
- ✦ Expand the market rather than fight for market share
- ✦ E-Bikes, Starter Batteries, Energy Storage, EVs, Space, Military
- ✦ Collaborate and work together – “Grow the Market”

# GALAXY IN JUST TWO YEARS

Conference	Santiago 2009	Toronto 2011
GXY Market Cap	A\$ 21 m	A\$ 335 m
Cash	A\$ 1.3 m	A\$ 76 m
Assets	A\$ 8 m	A\$ 200m ^
Funds Raised	-	A\$ 266m
Project	- Mt Cattlin DFS not completed	<ul style="list-style-type: none"> <li>- Mt Cattlin in production</li> <li>- Jiangsu in construction</li> <li>- Off-take arrangements</li> <li>- James Bay 70% Farm In *</li> <li>- Plans for battery plant</li> <li>- Plans for US\$260m raising</li> </ul>
Return %		+ 365%

## *Our Vision ...to become*

Integrated Lithium Resource, Chemical & Battery Co

World's second largest hard rock Spodumene mine

World's largest battery grade Lithium Carbonate producer

World's largest E-Bike Lithium Ion battery producer



# FINANCING PARTNERS

- ◆ Project capital costs – A\$145 million
- ◆ Creat Group - A\$33 million
- ◆ Institutions - A\$65 million
- ◆ RZB, CDB - A\$105 million loan
- ◆ Fengli Group – A\$60 million
- ◆ Mr Li Shu Fu (Geely Chairman) – A\$30 m



For personal use only

# PARTNERS

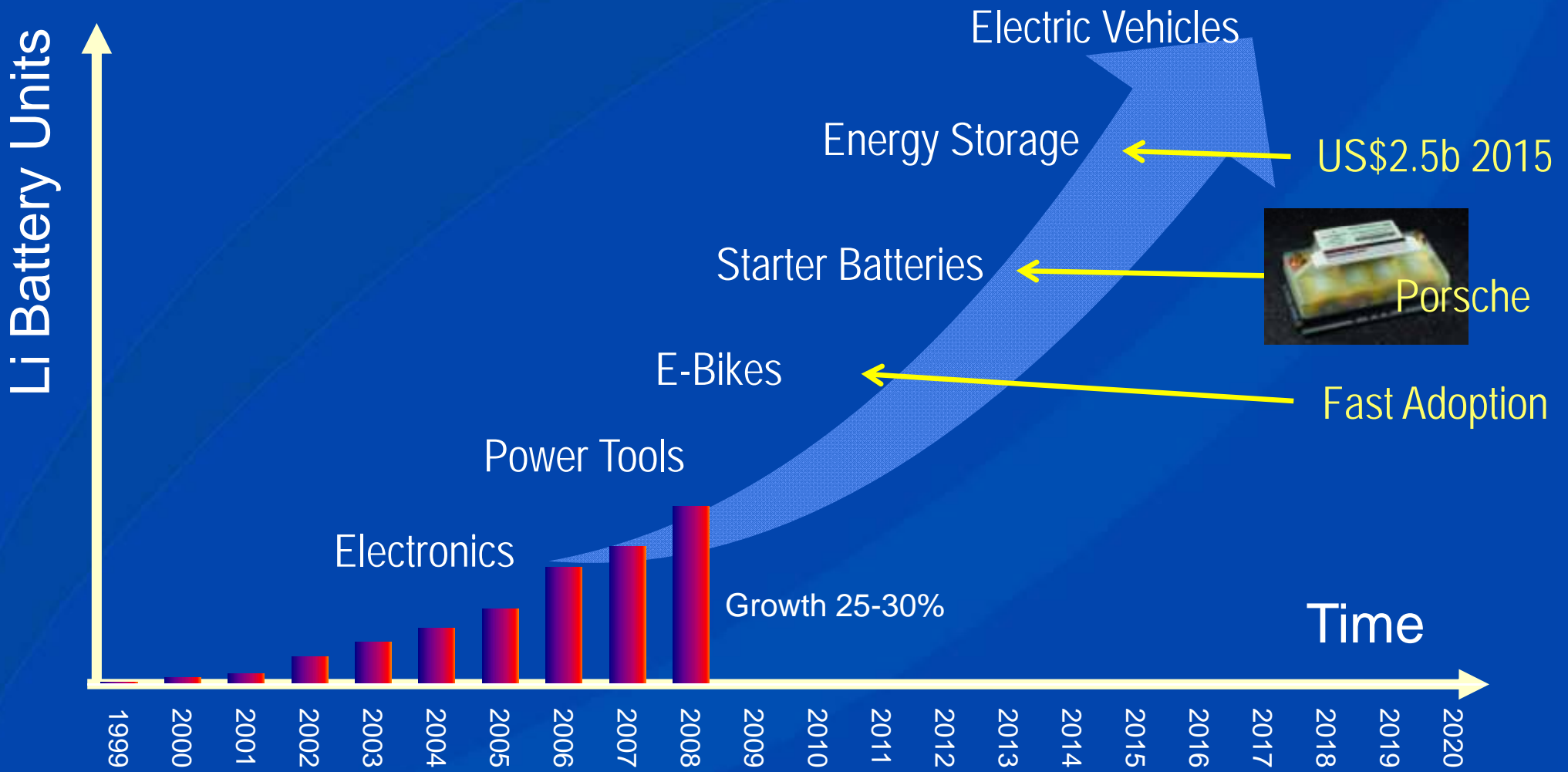
- ✦ Mitsubishi as major partner in Japan (30%)
- ✦ Top 13 Major Cathode Producers in China



- ✦ Lithium One – James Bay Spodumene Project

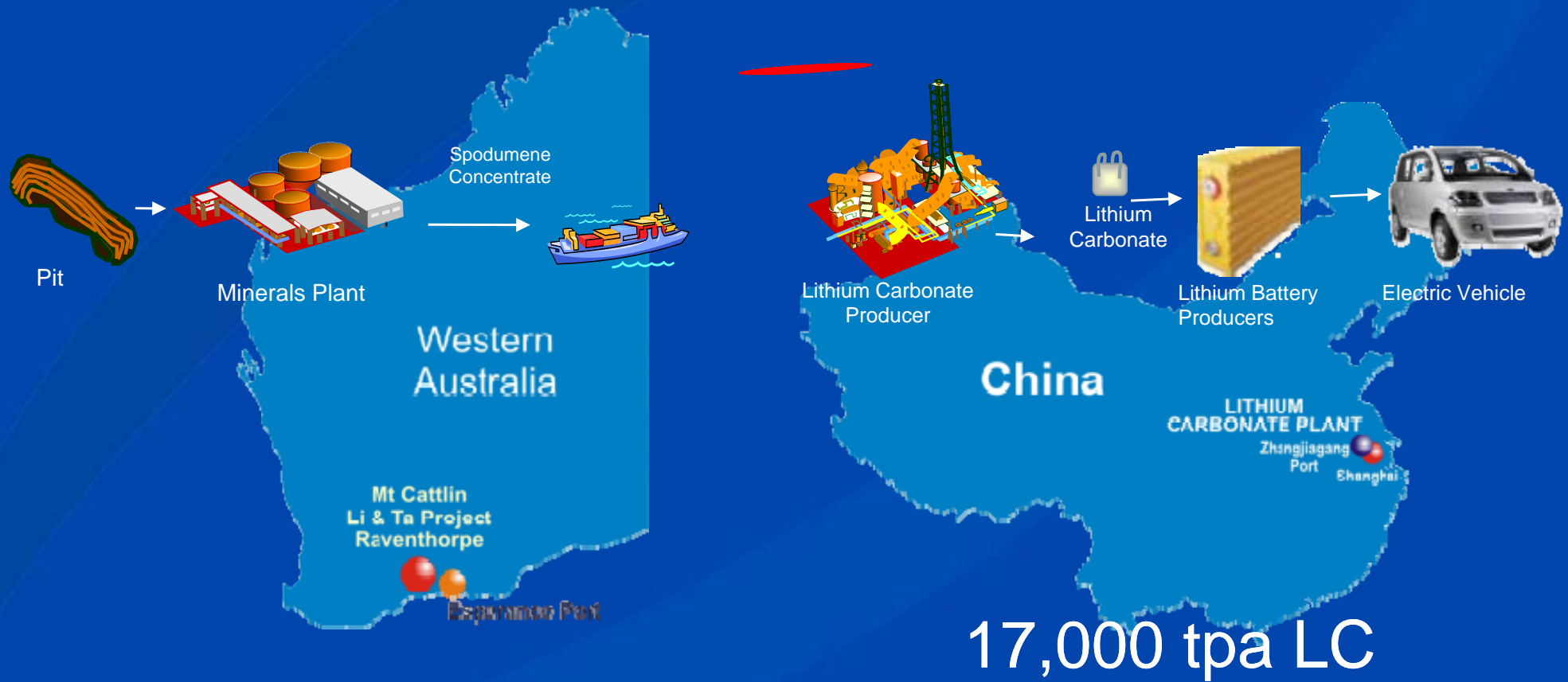
For personal use only

# GROWTH IN OTHER AREAS BEFORE EVs



For personal use only

# FAST TRACK PRODUCT TO MARKET



For personal use only

# Mt Cattlin Spodumene Mine

For personal use only

## MT CATTLIN UPDATE

- ◆ Ground breaking to start up in < 11 months
- ◆ No lost time injuries
- ◆ Mining achieving grade
- ◆ Crushing plant working well
- ◆ Fine tuning of DMS plant continues
- ◆ Achieving 6.1% Li<sub>2</sub>O grade
- ◆ First shipment Q1 2011



For personal use only



Open pit mining

For personal use only



Grade control drilling



For personal use only



Mt Cattlin spodumene operation

For personal use only



Mt Cattlin site showing crusher and ROM

For personal use only



ROM feed to primary crusher

For personal use only



Mt Cattlin control room

For personal use only



Primary screening plant

For personal use only



Dense media processing plant

For personal use only



DMS screening plant

For personal use only



Tailings thickener and waste silo



For personal use only



Melinda Robertson and Roger Pover

For personal use only



On grade spodumene product stockpile

For personal use only



On grade spodumene product stockpile

For personal use only



Ready to ship spodumene product

For personal use only



On grade primary tantalum concentrate

For personal use only



Tracking solar panels and wind turbines

# Jiangsu Lithium Carbonate Plant

For personal use only

# CHINESE LITHIUM CARBONATE PRODUCERS



For personal use only



For personal use only



For personal use only



For personal use only



Artist Impression - Jiangsu Lithium Carbonate Plant

老沙 Laosha

Jiangsu Lithium Carbonate Plant location



# JIANGSU UPDATE

- ◆ No lost time injuries
- ◆ All roads on site completed
- ◆ Foundation piling for most areas of the plant
- ◆ Steel structures for buildings
- ◆ Cladding for lithium packaging and warehouse
- ◆ Major equipment fabrication
- ◆ Award of contracts
- ◆ Commissioning in end Q2 2011



For personal use only

For personal use only



Maintenance Building



Process building steelwork

For personal use only



Second kiln fabrication completed



For personal use only



Ball Milling Equipment on site

For personal use only



Product Centrifuge

For personal use only



Product Packaging Building

For personal use only



Process equipment arriving on site

For personal use only



Process building steelwork



Processing buidings

For personal use only



Process building steelwork

For personal use only



Bagging machine at the factory in Europe

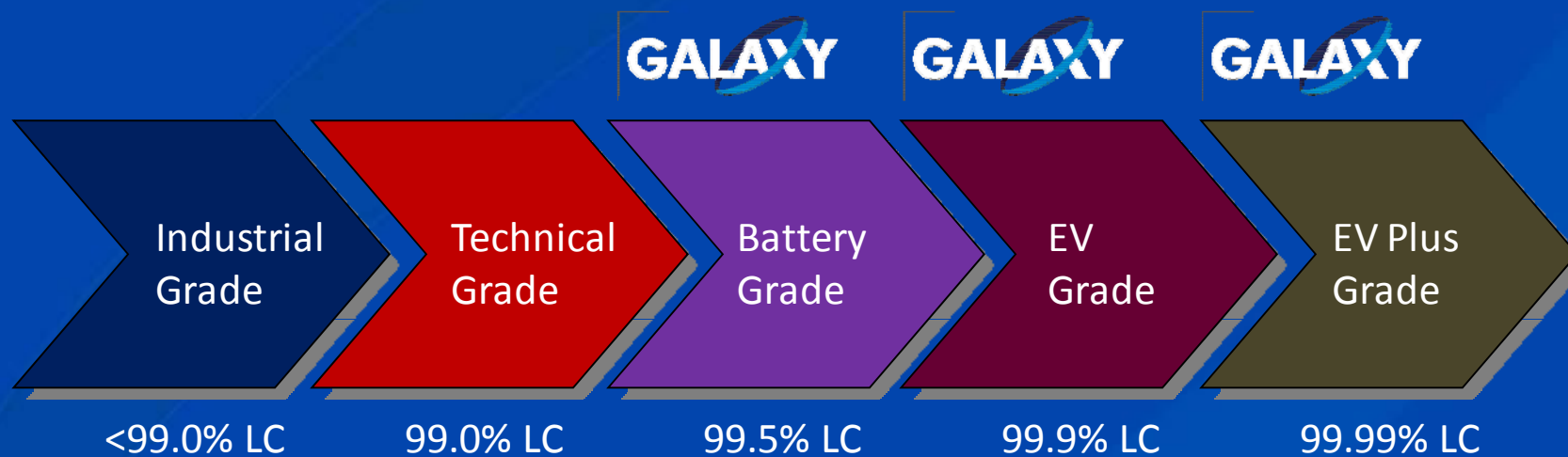


For personal use only



Galaxy Zhangjiagang laboratory

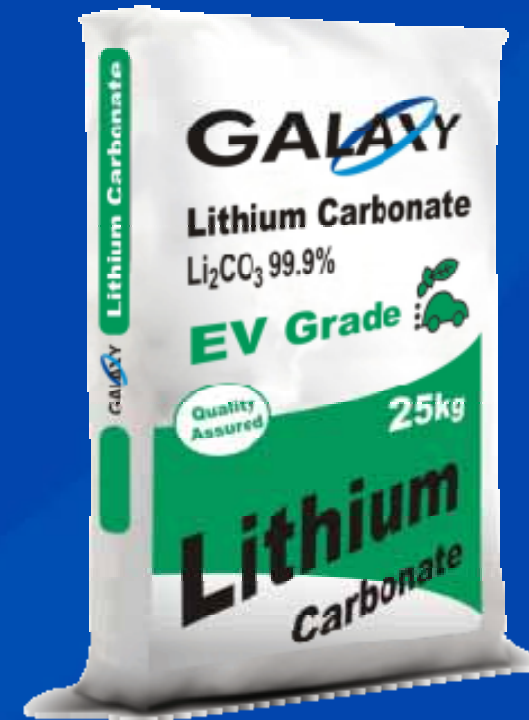
# GALAXY LAUNCHES EV GRADE



For personal use only

# GALAXY LAUNCHES EV GRADE

- ◆ Previous capability of 99.5% LC
- ◆ Extra purification step
- ◆ 17,000 tpa capacity of "EV Grade" 99.9%
- ◆ Largest producer in the world of "EV Grade"
- ◆ Can produce 99.99% "EV Plus Grade"
  
- ◆ EVs will drive for higher purity product
- ◆ GXY has positioned itself for this future



# WORLD CLASS DISTRIBUTION



For personal use only

# Expanding our Lithium Footprint

For personal use only

# JAMES BAY ACQUISITION

- ◆ Building our lithium footprint
- ◆ Farm –in acquisition of 70%
- ◆ C\$3m to earn 20%
- ◆ C\$3m on DFS to earn to 51%
- ◆ DFS completion to earn to 70%



- ◆ Resource of 22mt @ 1.28% Li<sub>2</sub>O
- ◆ Similar type to Mt Cattlin
- ◆ To use same design plants
- ◆ Copy and paste DFS

# Hong Kong Listing

For personal use only

## HONG KONG LISTING

- ◆ Broader investor base
- ◆ Largest and most liquid exchange
- ◆ Greater access to capital sources
- ◆ Greater alignment between our investor and our customer base
- ◆ Higher valuation multiples
- ◆ Strong appetite for Lithium exposure
- ◆ Target raising US\$260 m



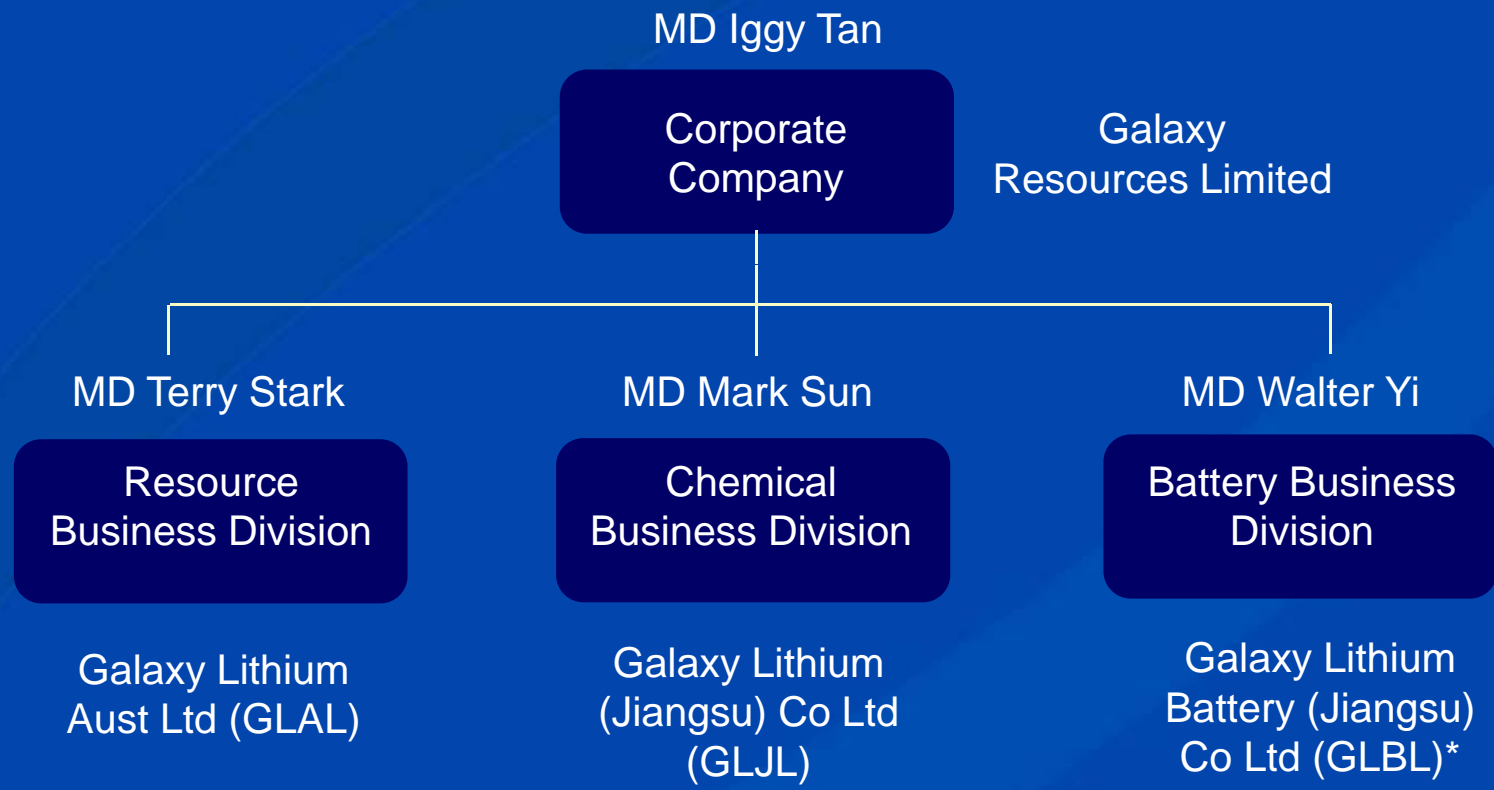


# VISION

Vertically integrated, lithium resource, chemical  
and battery company



# BUSINESS DIVISIONS



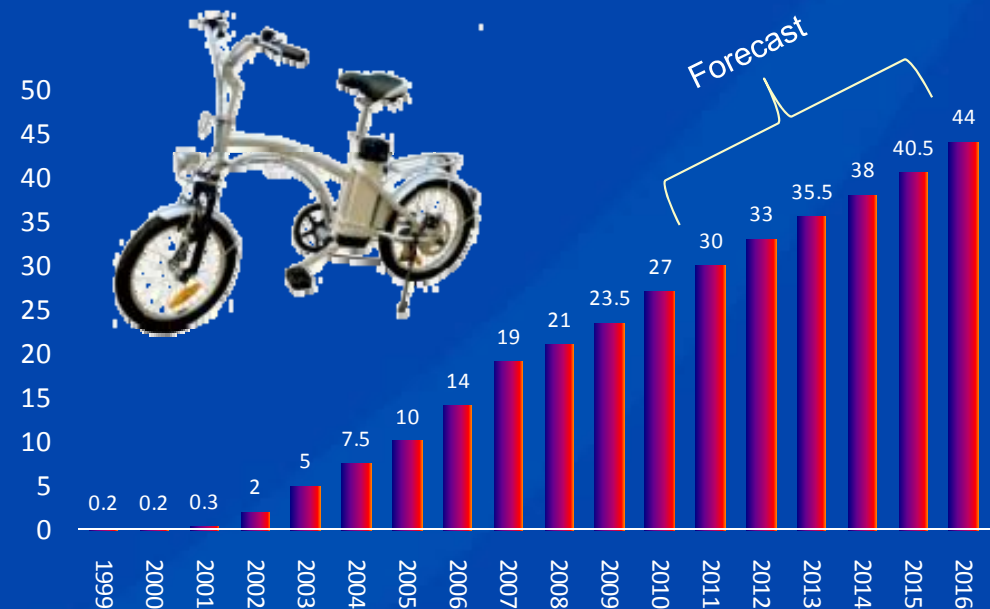
For personal use only

# GROWTH OF E-BIKE Li BATTERIES

- China to remain as major driver
- China CAGR 8.2% till 2016
- Year 2016 Sales of US\$20million
- Production in Asia – 44 m bikes pa
- Large proportion of this growth will be conversion to lithium battery



E Bikes Sales in Asia till 2016



For personal use only

For personal use only

# BATTERY PROJECT PARTNERS



Technology Partner  
tba

Equipment Partner  
KUBT Consortium

EPCM Partner  
M+W Group

Location  
Zhangjiagang PRC



# KUBT CREDENTIALS

**KUBT**



For personal use only

# GALAXY BATTERY TEAM

- ◆ Dr Yatendra Sharma – Project Manager
  - PHD Battery Technologist
- ◆ Walter Yi – Managing Director Battery Division
  - A123 Battery General Manager
- ◆ Lui Can – Technical Development Manager
  - Shanshan Battery Co
- ◆ Martin Ma – Sales & Marketing Manager
  - Boston Power Co
  - Sony China

For personal use only



Artist Impression - Jiangsu Lithium Battery Plant

# FEASIBILITY STUDY

Lithium Ion E-Bike Batteries

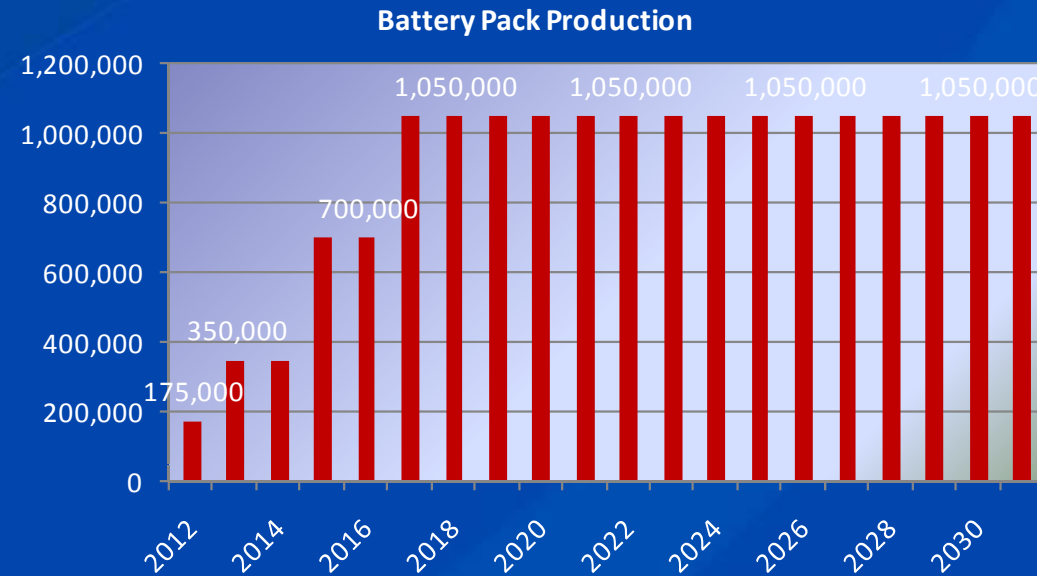
Lithium Iron Phosphate

36 V 10 Ah

Phase 1 - 350,000 pack pa

Phase 2 - 700,000 packs pa

Phase 3 - 1,000,000 packs pa



For personal use only



# MIXERS



For personal use only

# COATING AND DRYING



For personal use only

# ROLLING AND SLITTING



For personal use only

# VACUUM DRYING



For personal use only

# SEPARATOR FORMATION

For personal use only



# AUTOMATIC WINDING



For personal use only

# BATTERY ASSEMBLY EQUIPMENT

For personal use only



**Roll Laminating**



**Taping**



**Heat Sealing**

# AGING FORMATION GRADING DEGASSING



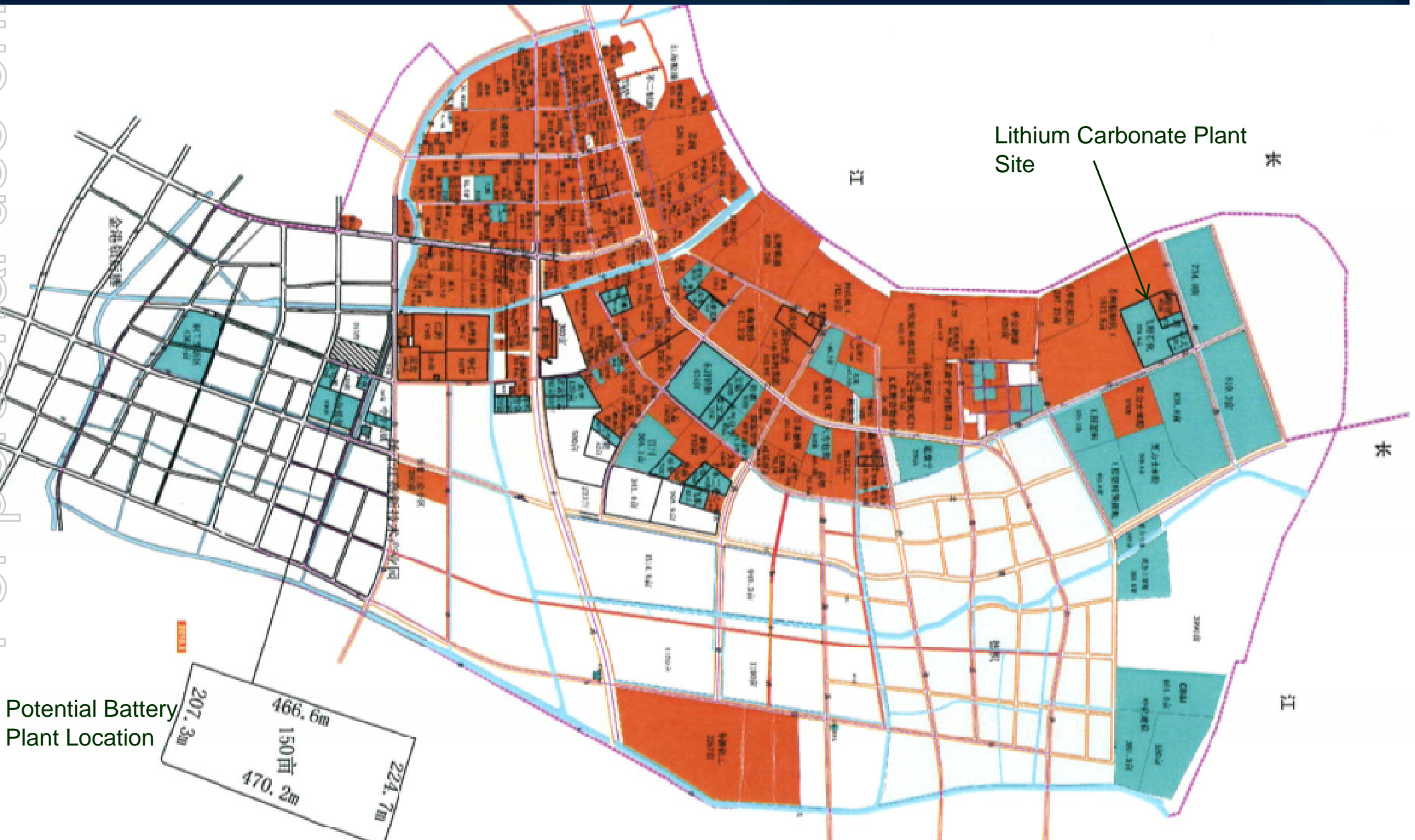
For personal use only





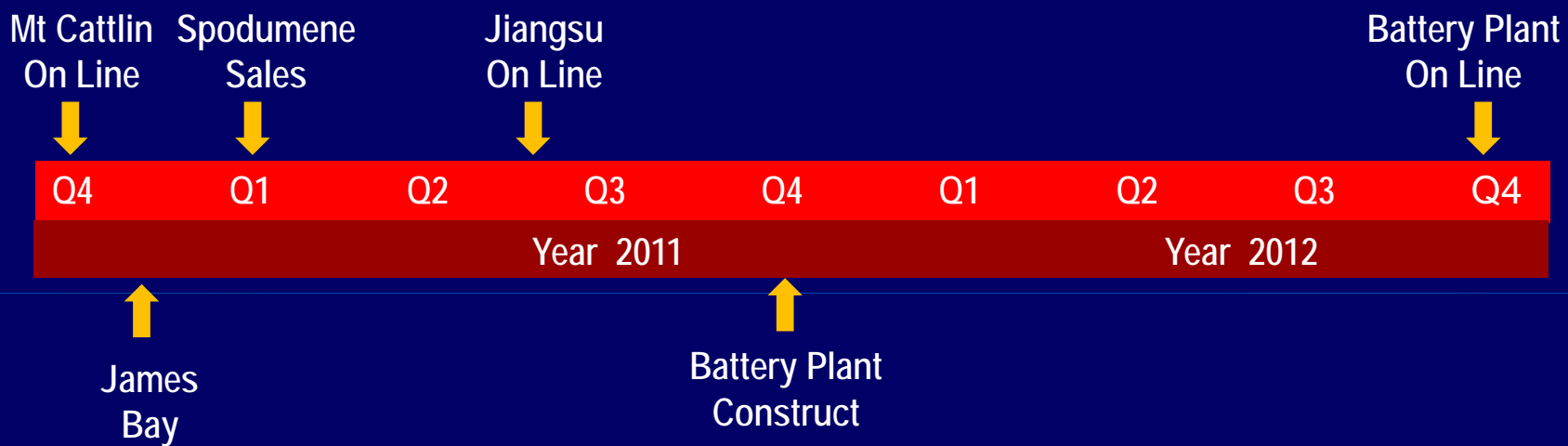
# LOCATION OF BATTERY PLANT

For personal use only



# COMPANY TIMELINE

For personal use only





*"Galaxy will continue to do what we say we are going to do"*