

9 March 2011

Company Announcements Office,  
ASX Securities Limited,  
20, Bridge Street,  
Sydney, N.S.W. 2000

**MAIDEN GOLD DRILLING PROGRAM - DUNDAS (WA)**

The Directors of Thor Mining PLC ("Thor" or the "Company") (AIM, ASX: THR, THRO), are pleased to advise the commencement of the maiden drilling program at the Dundas Gold Project in Western Australia.

The 65 hole RAB drilling program has been designed to test a 6km<sup>2</sup> anomaly identified from the 2010 surface calcrete sampling in EL 63/872

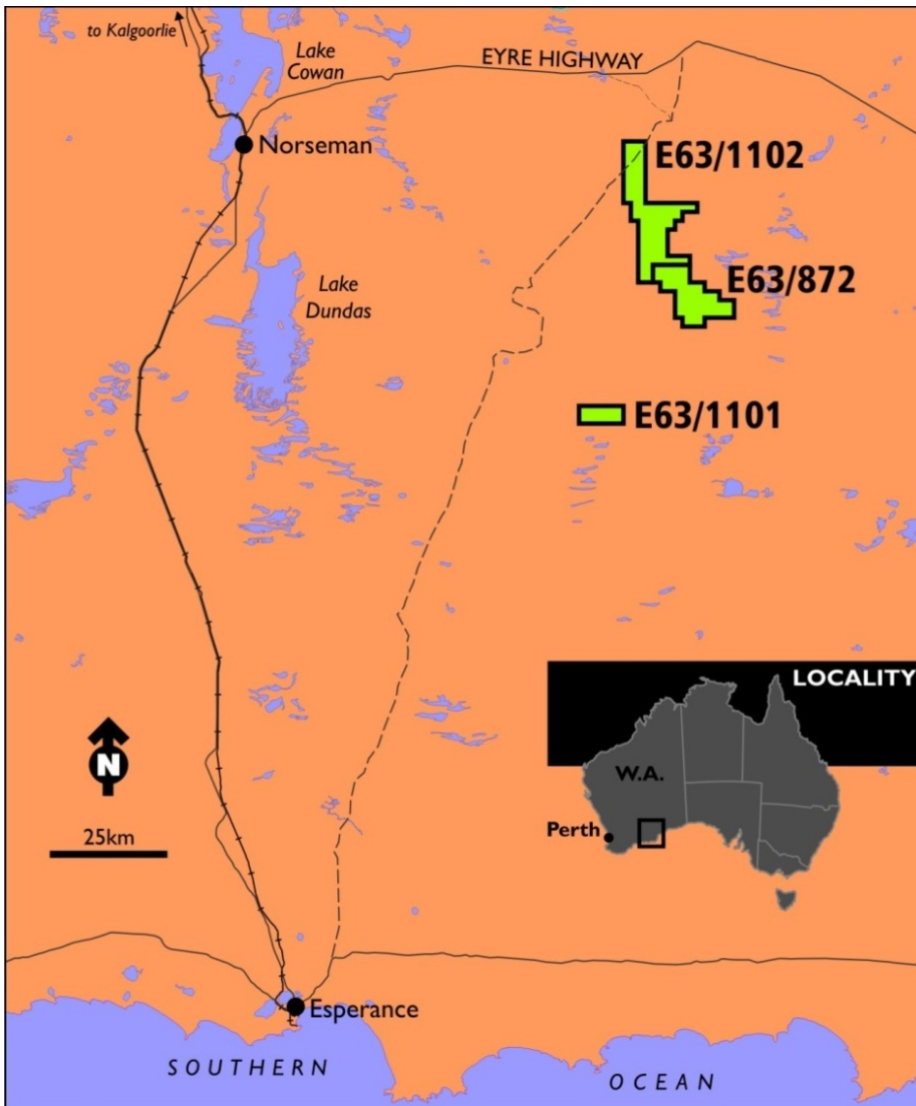


Figure 1: Location of Dundas gold project exploration licences

**THOR MINING PLC**

Registered Numbers:  
United Kingdom 05 276 414  
Australia 121 117 673

Registered Office:  
Unit 7  
60 – 66 Richmond Road  
KESWICK, SA, 5035  
Australia

Ph: +61 8 7324 1935  
Fx: +61 8 8351 5169

Email:  
corporate@thormining.com

Website:  
[www.thormining.com](http://www.thormining.com)

Enquiries:

Mick Billing  
Executive Chairman  
Thor Mining PLC  
+61 8 7324 1935

John Simpson  
Nominated Advisor  
Daniel Stewart & Co  
+44 (0) 207 776 6550

ASX Listings:  
Shares: THR  
Options: THRO

AIM Listings:  
Shares: THR

Directors:  
Michael Billing  
Michael Ashton  
Gregory Durack  
Norman Gardner  
Trevor Ireland

- Key Projects:**
- Molyhill (NT)  
*Tungsten, Molybdenum*
  - Dundas (WA)  
*Gold*
  - Spring Hill (NT)  
*Gold*

9 March 2011

**About the Dundas Project**

The Thor Dundas Project is situated in Western Australia within the Albany-Fraser Province. The project tenements lie on the general strike-extension of the most prolific gold-bearing belt of the Yilgarn Province - the 700km Wiluna-Kalgoorlie-Norseman greenstone belt (Figure 3), in an area where the trend of the Albany-Fraser belt is displaced southeastwards by about 50km (Figure 3). The Albany-Fraser belt hosts a number of recent gold discoveries including the +5 million ounce Tropicana gold deposit, and other discoveries including Hercules, Beachcomber, Socrates, Corvete, and Corona.

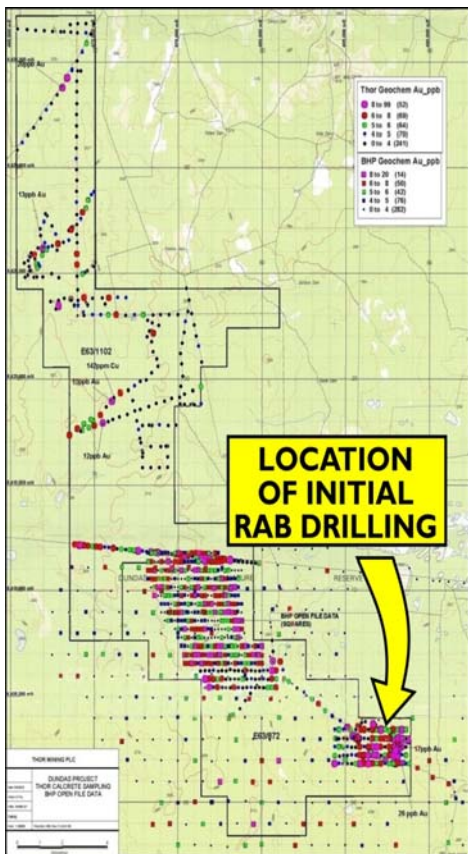


Figure 2. RAB drilling location EL 63/872

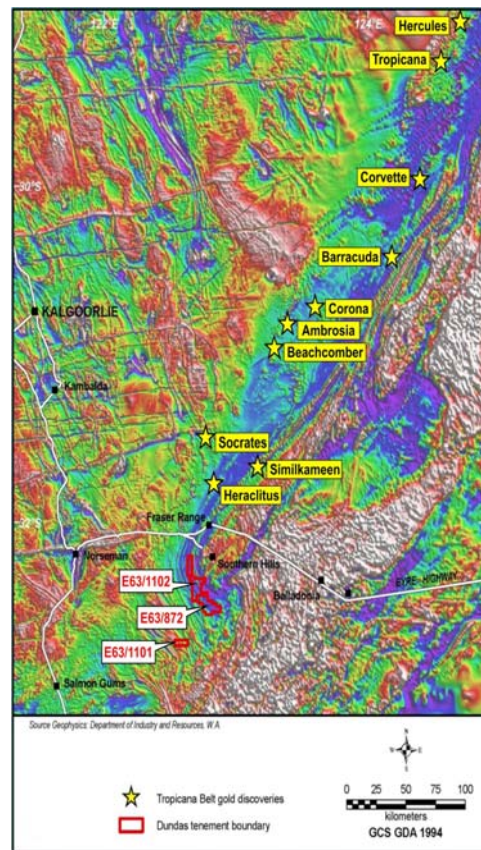


Figure 3. Magnetic Image - Albany Fraser Belt

The drilling program is designed to test the upper levels of bedrock for gold mineralisation, estimated at between 30 and 50 metres deep, and is expected to last for approximately 10 days. Assays from samples collected are expected late in March or early April.

For further detail contact:

**THOR MINING PLC**

Mick Billing  
Executive Chairman

*The information in this report that relates to exploration results is based on information compiled by Trevor Ireland, who is a Fellow of The Australasian Institute of Mining and Metallurgy. Mr Ireland is a Non-executive Director of Thor Mining PLC and provides professional services on a contractual basis. He has sufficient experience which is relevant to the style of mineralisation and type of deposit under consideration and to the activity which he is undertaking to qualify as a Competent Person as defined in the 2004 Edition of the 'Australasian Code for Reporting of Exploration Results, Mineral Resources and Ore Reserves'. Trevor Ireland consents to the inclusion in the report of the matters based on his information in the form and context in which it appears.*