



Developing Mammoth Gold Mines In Mammoth Country

Building an Asia/ Pacific mining house

Disclaimer

This document comprises written materials/slides for a presentation of Indochine Mining Ltd ('the Company'). This presentation does not constitute or form part of any offer or invitation to purchase or inducement to sell or issue any shares in the Company. Neither this presentation nor any part of it shall form any part of, or be relied on in connection with, any investment decision in relation thereto. The information contained in this presentation reflects current legislation and the business and financial affairs of the Company which are subject to change without notice and audit, and is subject to the provisions contained within legislation and it is intended for distribution in Australia.

The information contained herein is for discussion purposes only and does not purport to contain all the information that may be required to evaluate the Company or its financial position. No reliance may be placed for any purposes whatsoever on the information contained in this presentation or on its accuracy or completeness or on opinions contained herein or communicated in relation hereto. No representation or warranty, express or implied, is or will be given by or on behalf of the Company or any of its subsidiaries (together, 'the Group'), any member of the Group's directors, officers or employees or their respective agents or adviser or any other person as to the accuracy or completeness of the information or opinions contained in this presentation and none of the foregoing accept any liability whatsoever arising from any use of this presentation, its contents or otherwise arising in connection therewith.

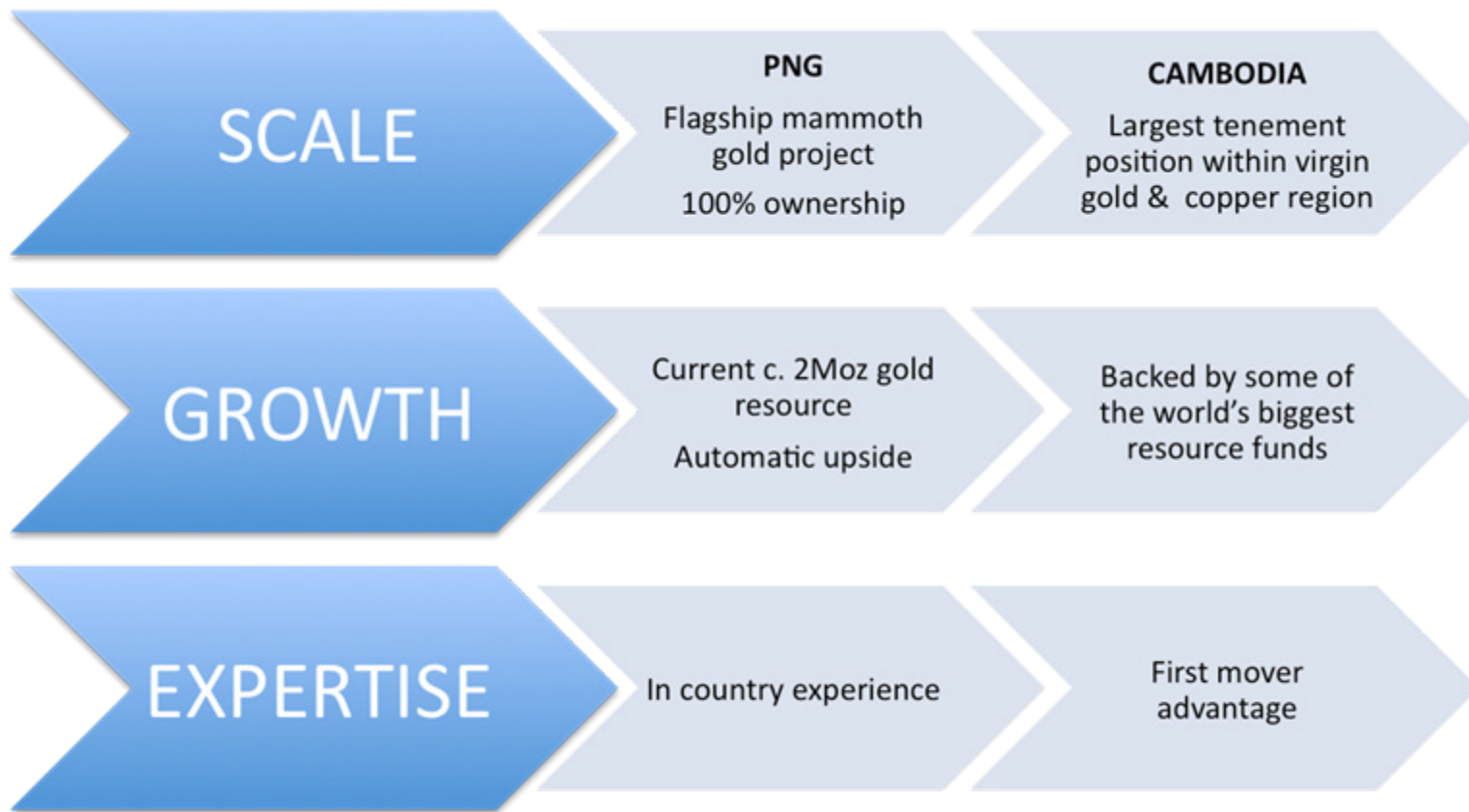
Certain statements in this presentation are forward-looking statements, which reflect the Company's current expectations and projections about future events. By their nature, forward-looking statements involve a number of risks and uncertainties, many of which are outside the control of the Company, and the forward-looking statements involve subjective judgement and assumptions that could cause actual results or events to differ materially from those expressed or implied by the forward-looking statements. These risks, uncertainties and assumptions could adversely affect the outcome and financial effects of the plans and events described herein. The Company does not undertake any obligation to update or revise any statements in this presentation including forward-looking statements. Given these uncertainties, readers of this information are cautioned not to place undue reliance on any forward looking statements

The Company and its adviser makes no representation and gives no warranties to the accuracy or reliability of any information contained in this document and does not accept any liability for any loss caused by representations, errors or omissions on the part of the Company or by any of their respective officers, employees, authorised representatives or agents. In preparing this information, the Company did not take into account the investment objectives, financial situation and particular needs of the reader.

All references to dollars, cents or \$ in this document are to Australian currency, unless otherwise stated. Nothing in this material should be construed as either an offer to see or a solicitation of an offer to buy or sell securities in any territory, state, country or nation.

Indochine

Mammoth Potential – Proven & Probable

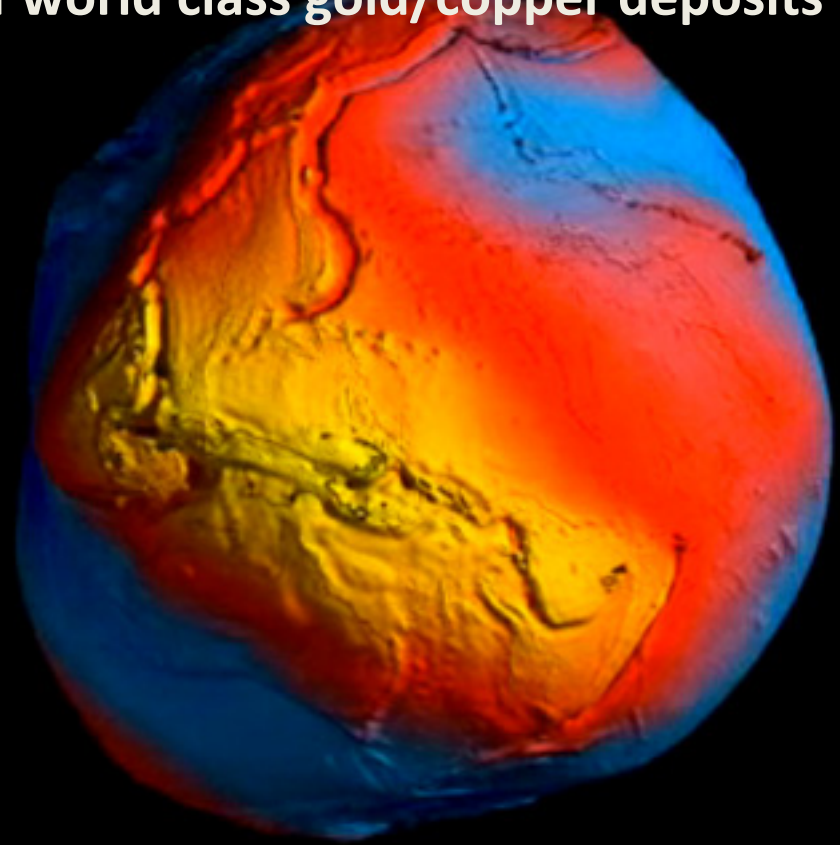


OUTCOME

Re-create multi billion \$
Asia/ Pacific projects

Mammoth Country

World's heaviest concentration of world class gold/copper deposits

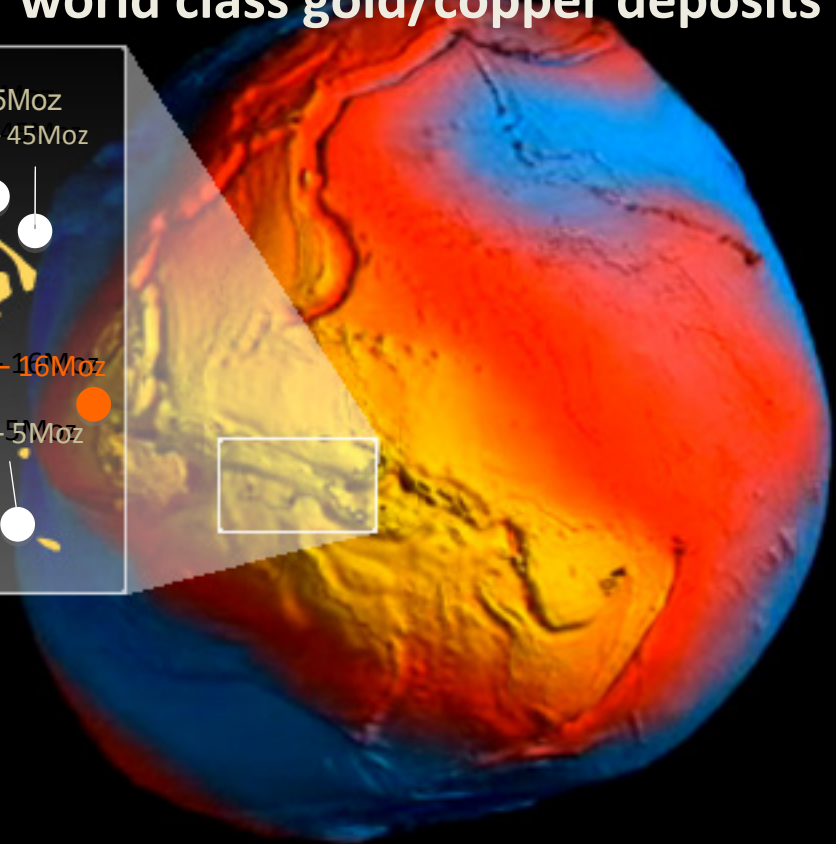
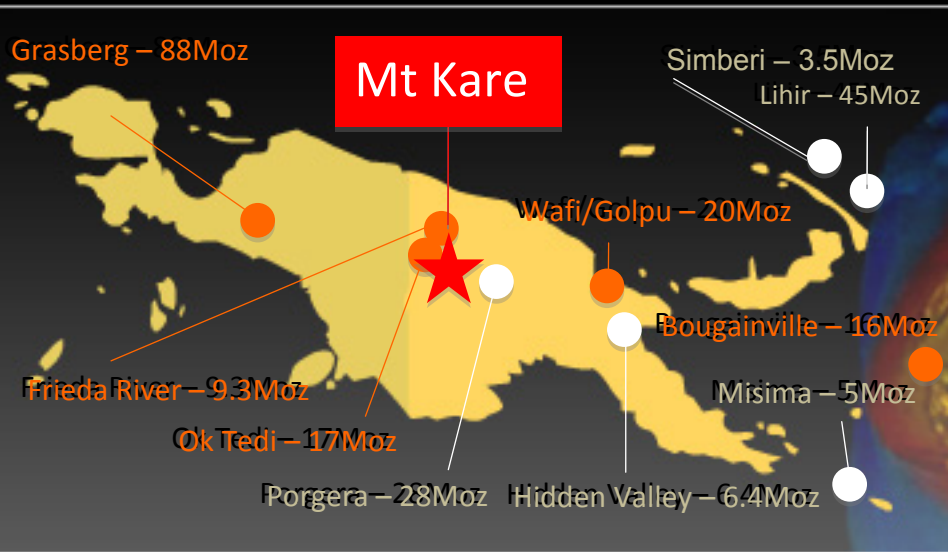


Heaviest part of the earth's crust

For personal use only

Mammoth Country

World's heaviest concentration of world class gold/copper deposits



Heaviest part of the earth's crust

MAMMOTHS

Mammoths in Mammoth Country

For personal use only

The Young Mammoth Today

Mt Kare gold deposit, PNG

- 100% ownership; Purchased for ~\$15/oz (cash & scrip)
- Adjacent to Barrick's Porgera gold mine (~30Moz)
 - Produced 800,000 oz per year average for 21 years
 - Same geology, ore types and structure
- 1.9 Moz gold equivalent* @ 2.4g/t AuEq
 - Cut-off based on US\$300/ oz gold price (1g/t cutoff)
 - High grade gold zone of 750,000 oz @ 5g/t gold
- Major resource upside

* Canadian NI43-101; Not JORC

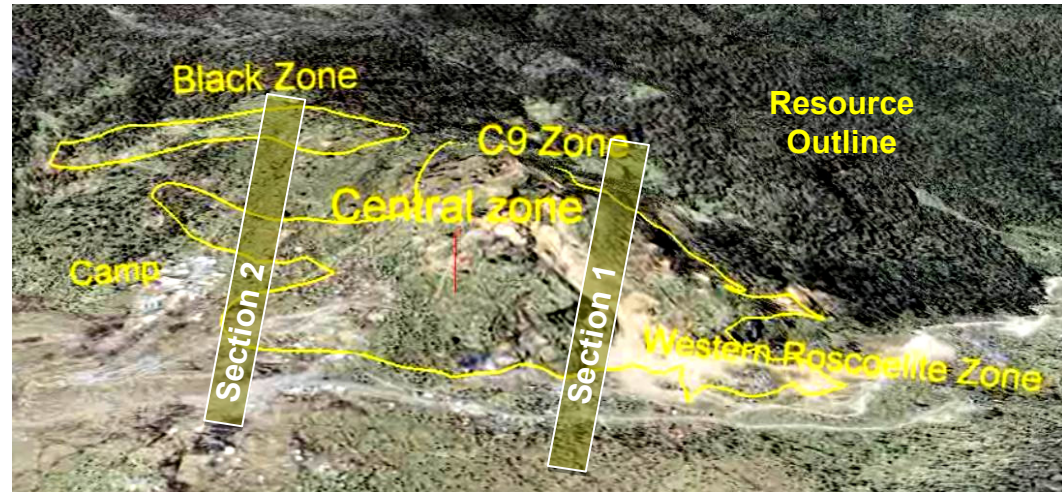
MT KARE

Major gold resource

The Mammoth is Awakening

Automatic Resource Increase

- On higher gold price alone
- On lower cut-off alone
- JORC compliant in next few mths
- Extensions ready to drill
- Several major look-alikes nearby



Resource c.2 Million ounces gold equivalent (Canadian NI43-101)

>80% in Indicated Resource category

Calculated at US\$300/oz gold price & \$5.50/oz silver price

GROWTH

Resource Upgrade
Solely on lower cutoff grade

Mammoth Results

Section 2

21m @ 444g/t gold

59m @ 12g/t gold

12m @ 174g/t gold

19m @ 5.4g/t gold

Section 1

25m @ 23g/t gold

18m @ 21g/t gold

44m @ 4.2g/t gold

14m @ 28g/t gold

GROWTH

Impressive high grade gold zone
750koz @ 5g/t gold

Development

- Potential large scale open cut and underground gold mine
- Targeting 150-250 koz annual production
- Located near to existing road and infrastructure (power), within 15km from Barrick's Porgera (30Moz+) gold mine
- Bankable Feasibility Study underway

AIM

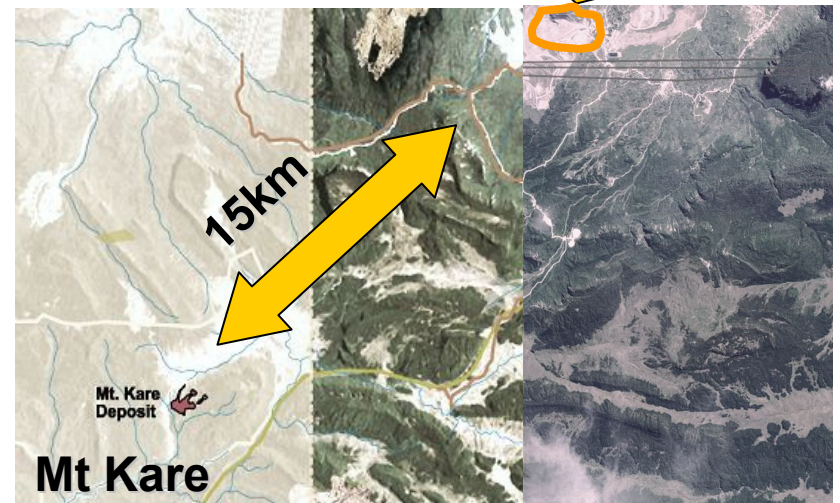
Create another high grade
world class gold mine

In the Shadow of Mammoth Porgera

- 30+Moz total resource
- 17Moz produced (21yrs)
- 800,000 oz/yr av.~5g/t
- Still growing
- 75Mtpa mine capacity
- Open Cut & Undergnd
- 15km from Mt Kare



Porgera



MAMMOTHS

Gold c.800,000 oz/yr Next Door

Development – Mt Kare

For personal use only

within 3+
months

- Resource upgrade
- Metallurgical sampling & testing

within 12
months

- Prefeasibility study

within 18
months

- Bankable feasibility study

AIM

Create another high grade
world class gold mine

Cambodia

The Next SE Asia Gold/Copper Province

- New gold and copper province
- Vastly underexplored for minerals
- Similar geological setting as major gold copper discoveries in nearby Laos and Thailand
- Pro-development government
- Escaped S.E. Asia exploration of last 40 years

PIONEER

IDC has an un-matchable position

Projects

Kratie
North

- Drilling now
- Gold discovered

Ratanakiri

- Major gold/ copper targeted
- Follow up drilling late 2011

AIM

Drilling to define a major
gold/copper project

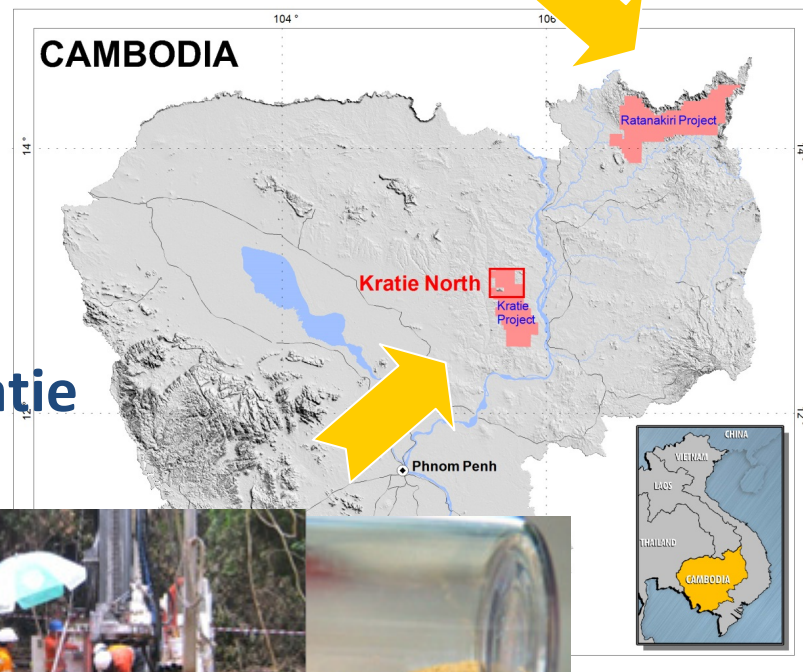
Gold & Copper

2 Main Projects

- Large lease holdings
- Potential for major discovery
- Target: a Sepon or Phu Kham project



Ratanakiri



Kratie



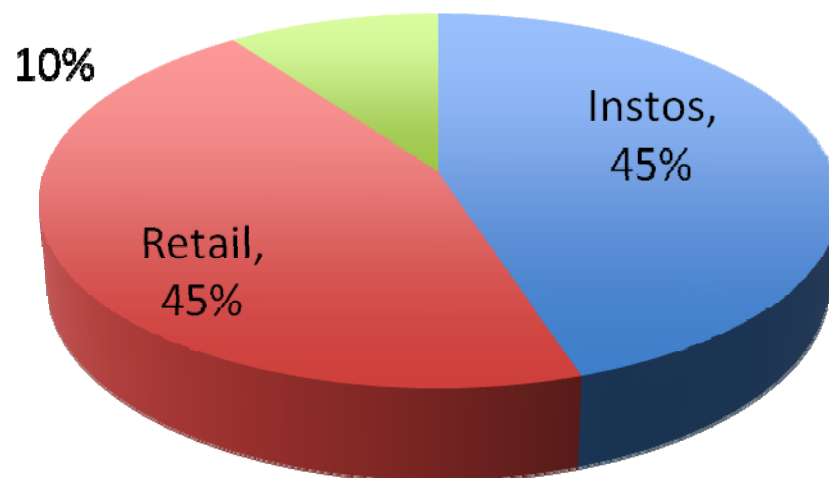
AIM

Drilling to define a major gold/copper project

World Class Shareholders

- Supported by world's largest specialist resource funds
 - Backing to develop mammoth projects
 - Major instos hold ~45%
 - Right combination of scale and upside potential
- => key drivers for investment**

Management & Corporate



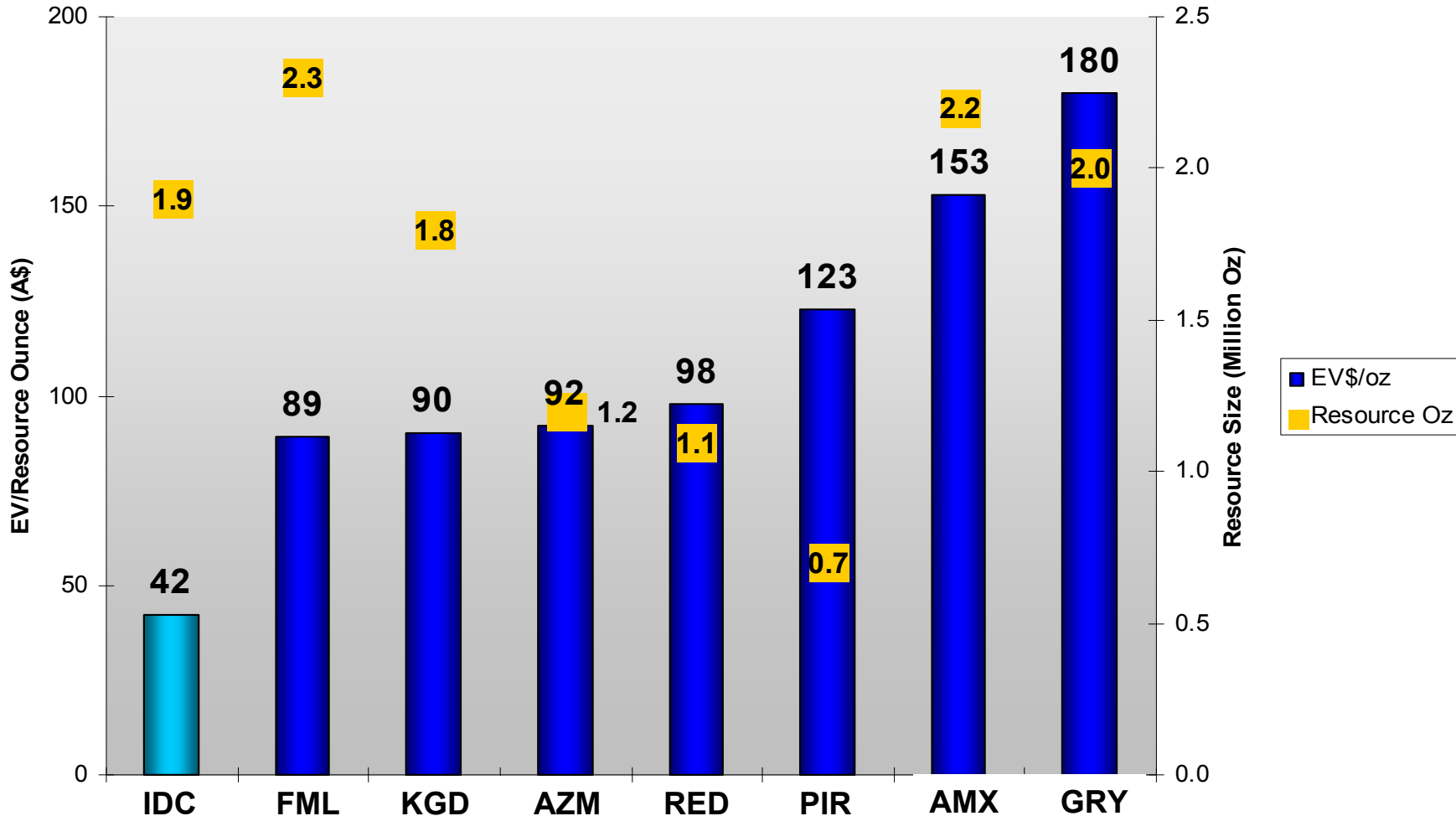
Och-Ziff	12%
Baker Steel	10%
BlackRock	~5%
Jabre Capital	~5%

SUPPORT

Backed by largest resource funds

Peer comparisons

EV\$/Resource Oz vs. Resource Size



IDC Next Year

- PFS on 100%-owned multi-million gold project
- Substantially increased resource and reserves beyond c.2Moz gold
- Resource definition on first of Cambodian gold and copper discoveries
- Market cap mirroring that of a developer of a major multi-million ounce gold project

MISSION

Building a major Asia/ Pacific
mining house

Summary

For personal use only

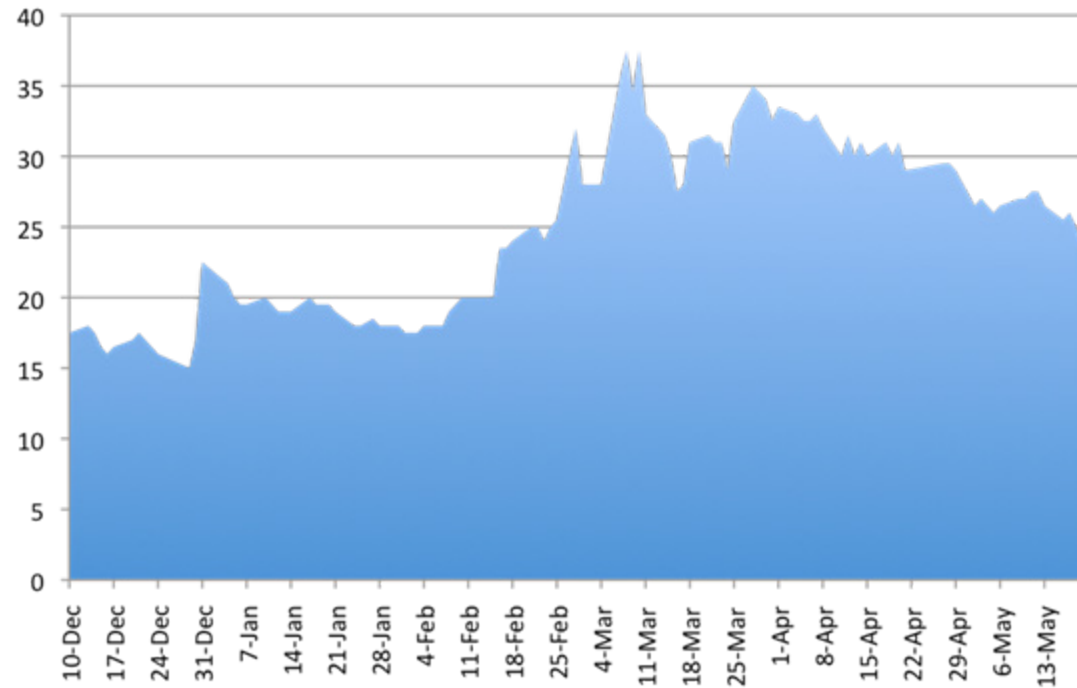


For personal use only

Appendices

Company snapshot

Price	23-26 cents /share (late May 2011)
ASX Code	IDC
Shares issued	415M in total; (82M in escrow) +62M for Mt Kare
iPO	Raised A\$20M in Dec @\$0.20/sh
Private Placement	Raised A\$16M in April 53.75M shares @\$0.30/sh
Cash	A\$24M
Market cap	\$100M



Board and management

Ian W Ross Dip Bus (London), A.C.I.B (U.K.)

- *Chairman and Non-Executive Director – ex Ivanhoe*

Stephen Gemell BE Mining(Hons), FAusIMM, MAIME, MMICA

- *Non-Executive Director – Project development skills*

Gavan H Farley Dipl. Bus, MBA (Finance), MAICD

- *Non-Executive Director, Company Secretary*

Stephen Promnitz BSc

- *CEO – ex Kingsgate 2IC & Bus Development*
- *previously in Exploration & Finance, Asia & Americas*

David Meade BSc

- *Chief Geologist – 15 years experience in exploration in S.E. Asia*
- *ex- Oz Minerals (Oxiana) & PanAust*

Why PNG?

- Premier region for finding major gold and copper projects
- Influx of foreign investment
- Under development – Wafi-Golpu Au-Cu (\$2-3Bn Newcrest), Frieda Cu-Au (\$2-3 Bn Xstrata)
- LNG Projects - \$15Bn Exxon; ~\$5Bn Interoil
- 6-7% GDP growth; 6 million population
- Stable, pro-development government

Mt Kare history

1987-88	Discovery & Gold rush
1988	Alluvial miners extracted >1Moz gold <ul style="list-style-type: none">• CRA Drilling started (32 holes)
1996-08	Canadian Junior; 320 holes drilled
2007	c.2Moz gold/silver resource defined
2009-10	Liquidation after Financial crisis; <ul style="list-style-type: none">• \$60M in past expenditure
2009-11	Winning tender; Transfer to Summit

Mt Kare Q&A

- Purchase - from liquidation after prior owners collapsed in financial crisis
- Title - Clean title from liquidation
- Landowners - all want development (after 20+ years without mining)
- Case study – Hidden Valley, PNG
 - Project dormant for ~10-15 years
 - Companies worked with landowners to produce agreements and operating mine

Cambodia factsheet

- Population: 14 Million (~50% <25 years old)
- Govt: Constitutional monarchy; democracy
- Exports: clothing, agriculture, timber
- GDP growth: 5.5%. (~10% 2003-07)
- Limited modern exploration
 - “closed” from late 60’s to 2006
 - Missed copper & gold exploration booms
- Able to own title 100%

Mt Kare Resource

Mt Kare Foreign Resource Statement: Canadian NI 43-101 (non-JORC)

Resources*	Million Tonnes	Gold g/t	Silver g/t	Gold Moz	Gold Equiv*
Indicated Resources	18.8	2.31	17.31	1.4Moz	1.6Moz
Inferred Resources	5.8	1.56	9.53	0.3Moz	0.3Moz
Total Resources Cutoff Grade 1g/t AuEq	24.6	2.13	15.49	1.7Moz	1.9Moz @ 2.4g/t AuEq

High grade zone - Indicated Resource: 0.75Moz @ 5g/t gold, 25g/t silver

Mineral Resources, under National Instrument NI 43-101, prepared by Mr Robert Sim of Longview Technical Group. Ms. Lynn Olssen MAUSIMM (CP), Senior Consultant and full time employee of Snowden approved the resource estimation, the resources estimation procedure and QAQC data. Lynn Olssen is a Qualified Person as defined by NI43-101. The resources have been tabulated for a gold equivalent grade (AuEq) of 54.55 silver ounces per 1 gold ounce, based on a gold price of US\$300/oz and a silver price of US\$5.50/oz. Resource Statement is extracted from original report titled "Buffalo Gold Limited: Mt Kare Technical Report Update, August 2007 (NI43-101, Snowden)" available publicly on www.SEDAR.com. Waiver obtained from ASX under Listing Rule 5.6 to release this resource statement.

Competent Person Statement

David Meade a full time employee of the Indochine Group (Indochine Resources (Cambodia) Ltd) is a member of the Australian Institute of Geoscientists and has sufficient experience relevant to the style of mineralisation and type of deposit under consideration and to the activity undertaken, being reported herein as Exploration Results, to qualify as a Competent Person as defined in the 2004 Edition of the Australasian Code for Reporting of Exploration Results, Mineral Resources and Ore Reserves (The JORC Code, 2004 Edition). David Meade has consented to the public reporting of these statements and results and the form and context in which they appear.

* Canadian NI43-101; Cut-off: 1g/t gold equiv; calculated using US\$300/oz gold, US\$5.50 oz silver