



Developing Gold Mines In Mammoth Country

Building an Asia/ Pacific mining house

18 July 2011

Disclaimer

This document comprises written materials/slides for a presentation of Indochine Mining Ltd ('the Company'). This presentation does not constitute or form part of any offer or invitation to purchase or inducement to sell or issue any shares in the Company. Neither this presentation nor any part of it shall form any part of, or be relied on in connection with, any investment decision in relation thereto. The information contained in this presentation reflects current legislation and the business and financial affairs of the Company which are subject to change without notice and audit, and is subject to the provisions contained within legislation and it is intended for distribution in Australia.

The information contained herein is for discussion purposes only and does not purport to contain all the information that may be required to evaluate the Company or its financial position. No reliance may be placed for any purposes whatsoever on the information contained in this presentation or on its accuracy or completeness or on opinions contained herein or communicated in relation hereto. No representation or warranty, express or implied, is or will be given by or on behalf of the Company or any of its subsidiaries (together, 'the Group'), any member of the Group's directors, officers or employees or their respective agents or adviser or any other person as to the accuracy or completeness of the information or opinions contained in this presentation and none of the foregoing accept any liability whatsoever arising from any use of this presentation, its contents or otherwise arising in connection therewith.

Certain statements in this presentation are forward-looking statements, which reflect the Company's current expectations and projections about future events. By their nature, forward-looking statements involve a number of risks and uncertainties, many of which are outside the control of the Company, and the forward-looking statements involve subjective judgement and assumptions that could cause actual results or events to differ materially from those expressed or implied by the forward-looking statements. These risks, uncertainties and assumptions could adversely affect the outcome and financial effects of the plans and events described herein. The Company does not undertake any obligation to update or revise any statements in this presentation including forward-looking statements. Given these uncertainties, readers of this information are cautioned not to place undue reliance on any forward looking statements

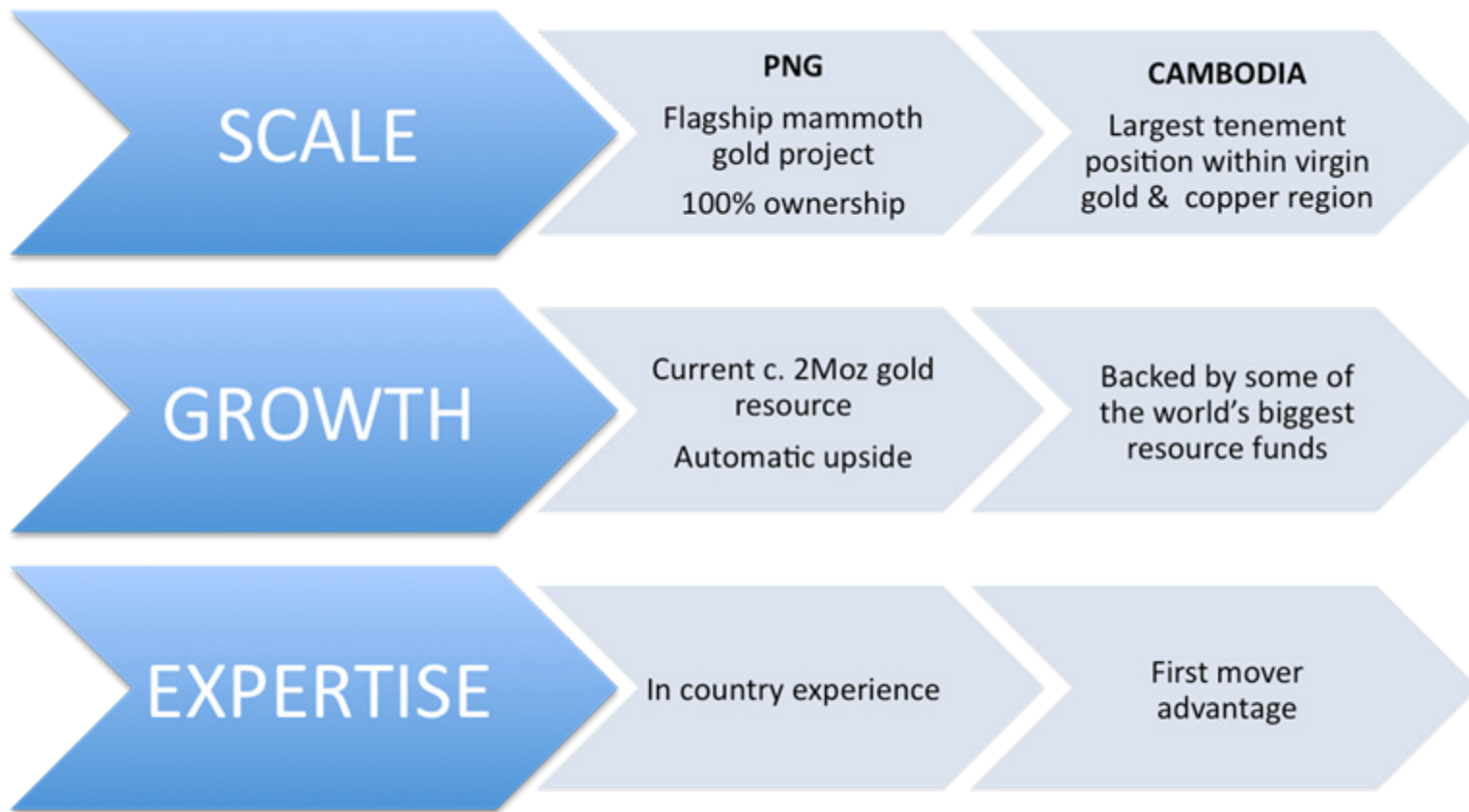
The Company and its adviser makes no representation and gives no warranties to the accuracy or reliability of any information contained in this document and does not accept any liability for any loss caused by representations, errors or omissions on the part of the Company or by any of their respective officers, employees, authorised representatives or agents. In preparing this information, the Company did not take into account the investment objectives, financial situation and particular needs of the reader. All references to dollars, cents or \$ in this document are to Australian currency, unless otherwise stated. Nothing in this material should be construed as either an offer to see or a solicitation of an offer to buy or sell securities in any territory, state, country or nation.

Competent Person Statement

David Meade a full time employee of the Indochine Group (Indochine Resources (Cambodia) Ltd) is a member of the Australian Institute of Geoscientists and has sufficient experience relevant to the style of mineralisation and type of deposit under consideration and to the activity undertaken, being reported herein as Exploration Results, to qualify as a Competent Person as defined in the 2004 Edition of the Australasian Code for Reporting of Exploration Results, Mineral Resources and Ore Reserves (The JORC Code, 2004 Edition). David Meade has consented to the public reporting of these statements and the form and context in which they appear. Comments regarding resources refer to Indochine's ASX release of 4 March 2011 and the Waiver to Listing Rule 5.6 granted by the ASX to report a foreign resource statement (Canadian NI43-101).

Indochine

Mammoth Potential – Proven & Probable

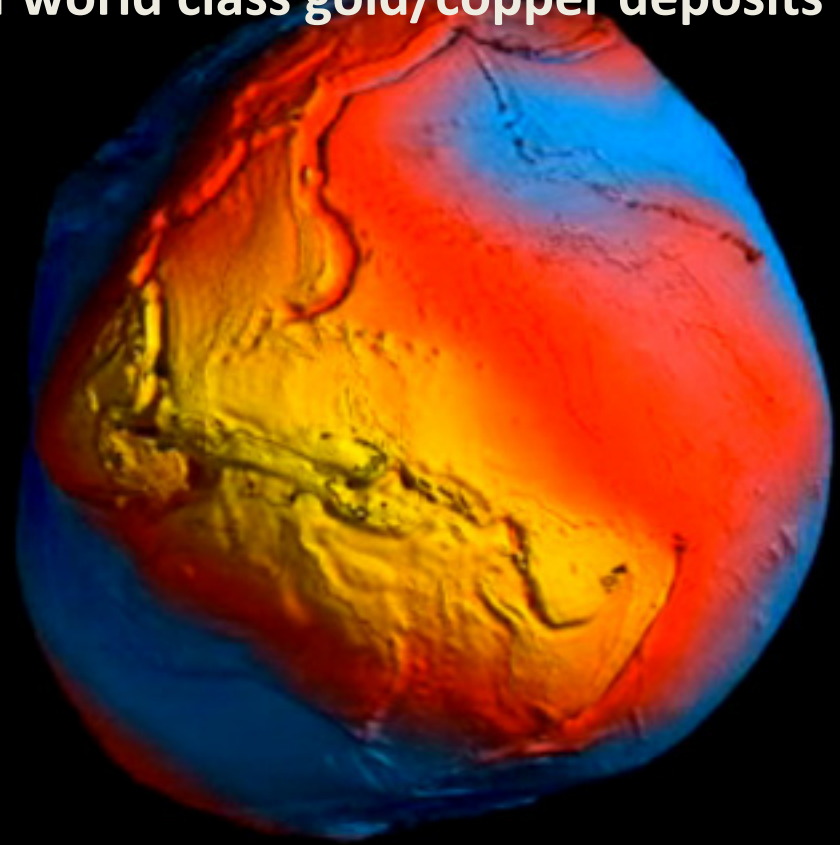


OUTCOME

Re-create multi billion \$
Asia/ Pacific projects

Mammoth Country

World's heaviest concentration of world class gold/copper deposits

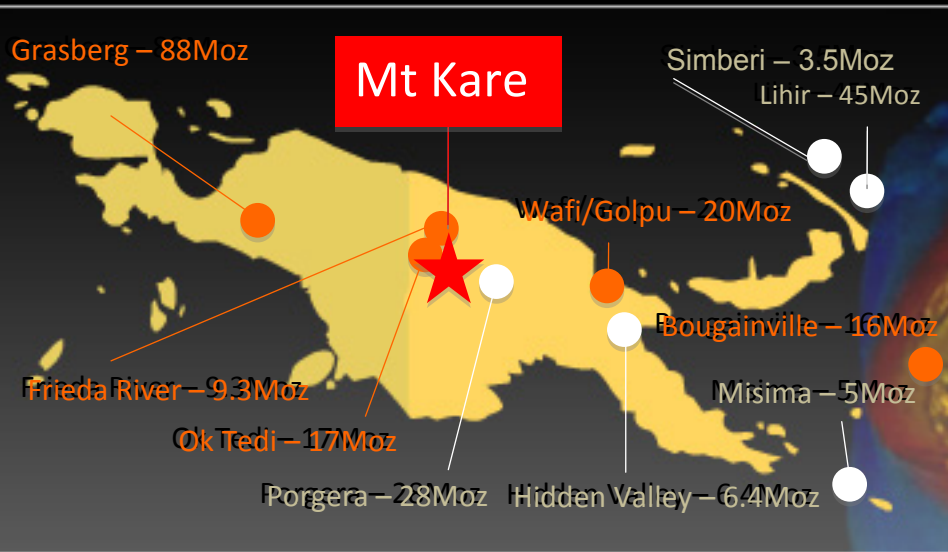


Heaviest part of the earth's crust

For personal use only

Mammoth Country

World's heaviest concentration of world class gold/copper deposits



Heaviest part of the earth's crust

MAMMOTHS

Mammoths in Mammoth Country

For personal use only

The Young Mammoth Today

Mt Kare gold deposit, PNG

- 100% ownership; Purchased for ~\$15/oz (cash & scrip)
- Adjacent to Barrick's Porgera gold mine (~30Moz)
 - Same geology, ore types and structure
- 350 holes define deposit
- Major resource upside



MT KARE

Major gold deposit

Mammoth Results

Section 2

21m @ 444g/t gold
59m @ 12g/t gold

12m @ 174g/t gold
19m @ 5.4g/t gold

Section 1

25m @ 23g/t gold
18m @ 21g/t gold

44m @ 4.2g/t gold
14m @ 28g/t gold

GROWTH

Impressive high grade gold zone

Development

- Potential large scale open cut and underground gold mine
- Targeting 150-250 koz annual production
- Located near to existing road and infrastructure (power), within 15km from Barrick's Porgera (30Moz+) gold mine
- Bankable Feasibility Study underway

AIM

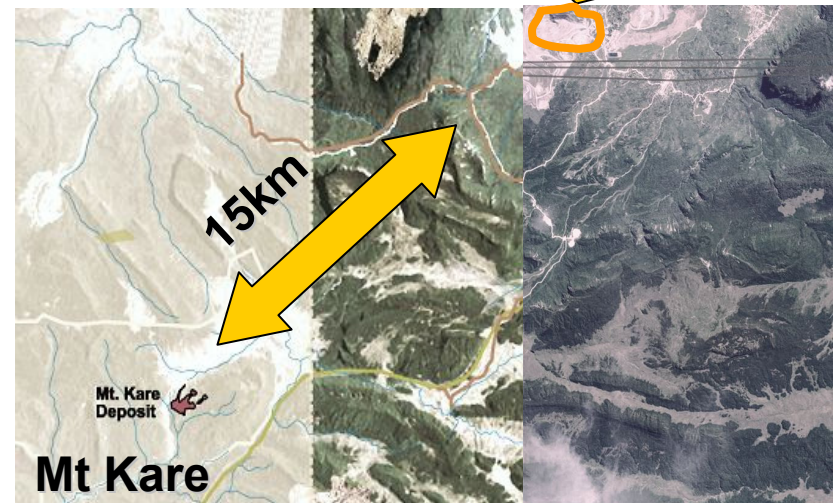
Create another high grade
world class gold mine

In the Shadow of Mammoth Porgera

- 30+Moz total resource
- 17Moz produced (21yrs)
- 800,000 oz/yr av.~5g/t
- Still growing
- 75Mtpa mine capacity
- Open Cut & Undergnd
- 15km from Mt Kare



Porgera



MAMMOTHS

Gold c.800,000 oz/yr Next Door

Development – Mt Kare

within 3+
months

- Resource upgrade
- Metallurgical sampling & testing

within 12
months

- Prefeasibility study

within 18
months

- Bankable feasibility study

AIM

Create another high grade
world class gold mine

Development – Feasibility Study

- Drilling - starts July, 3 rigs
10,000 metres – initial program
Metallurgy testwork – focus
Resource extensions - later
- Gold - new areas located



Development Team

- **Head – Mining Engineer**

 - PNG experience; Melanesian; Previously converted resource to mine

 - Managed feasibility study, permitting, landowner agreements

 - Contractors given specific tasks

- **Geologists**

 - PNG experience; some previously on project

 - Previously worked on feasibility studies in PNG

- **Drillers**

 - Locals; Worked on similar projects nearby; Good support network

Cambodia

The Next SE Asia Gold/Copper Province

- New gold and copper province
- Vastly underexplored for minerals
- Similar geological setting as major gold copper discoveries in nearby Laos and Thailand
- Pro-development government
- Escaped S.E. Asia exploration of last 40 years

PIONEER

IDC has an un-matchable position

Projects

Kratie
North

- Drilling now
- Gold discovered

Ratanakiri

- Major gold/ copper targeted
- Follow up drilling late 2011

AIM

Drilling to define a major
gold/copper project

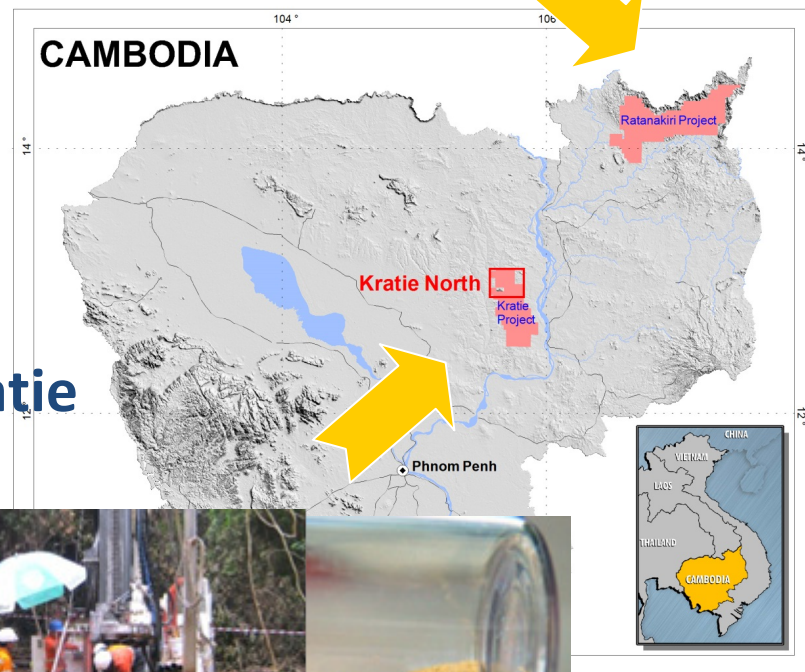
Gold & Copper

2 Main Projects

- Large lease holdings
- Potential for major discovery
- Target: a Sepon or Phu Kham project



Ratanakiri



Kratie



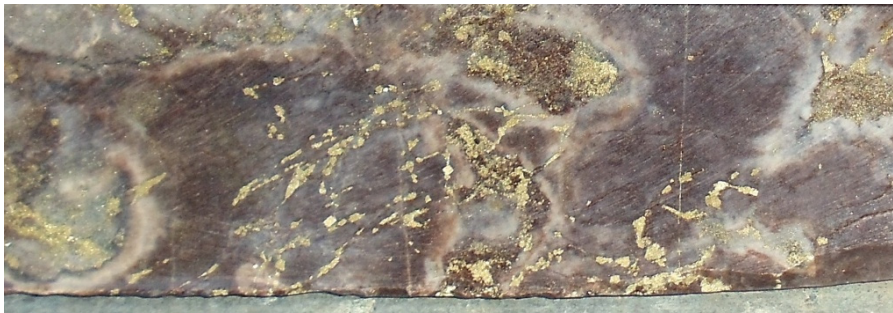
AIM

Drilling to define a major gold/copper project

Gold & Copper

Kratie Nth Project

- 2200m drilling completed
- 1st target promising:
 - 200m @ 0.3g/t gold (1st hole)
- Pyrite – pyrrhotite in geophysical target
- 2nd target- Gold in surface veins



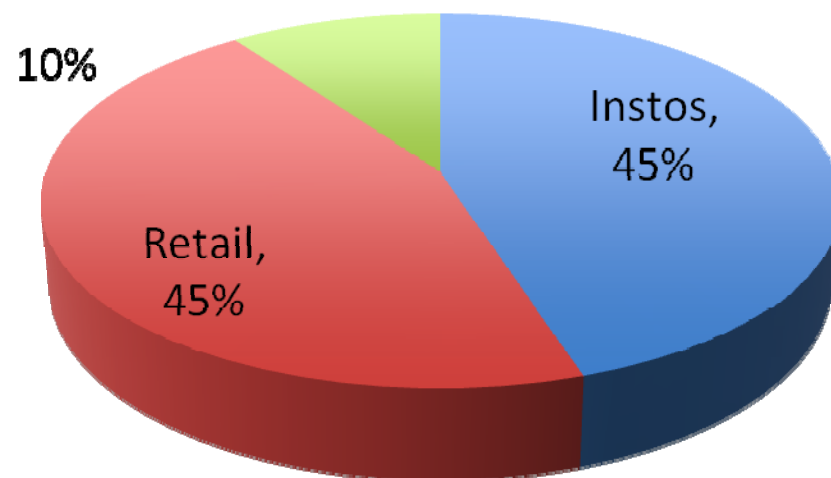
AIM

Drilling to define a major
gold/copper project

World Class Shareholders

- Supported by world's largest specialist resource funds
 - Backing to develop mammoth projects
 - Major instos hold ~45%
 - Right combination of scale and upside potential
- => key drivers for investment**

Management & Corporate



Och-Ziff	12%
Baker Steel	10%
BlackRock	~4%
Jabre Capital	~5%

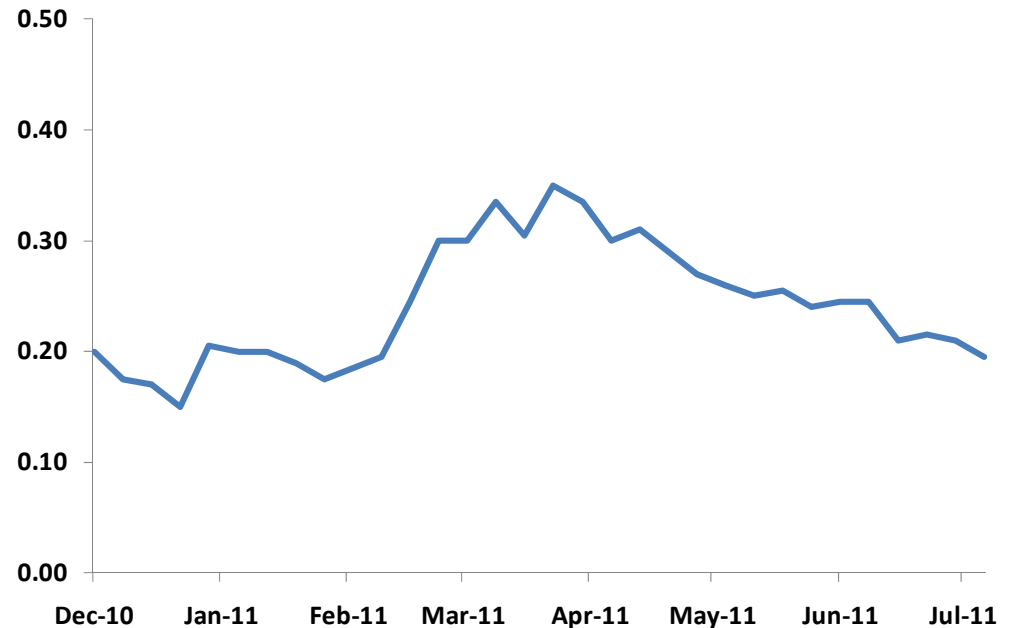
SUPPORT

Backed by largest resource funds

Company snapshot

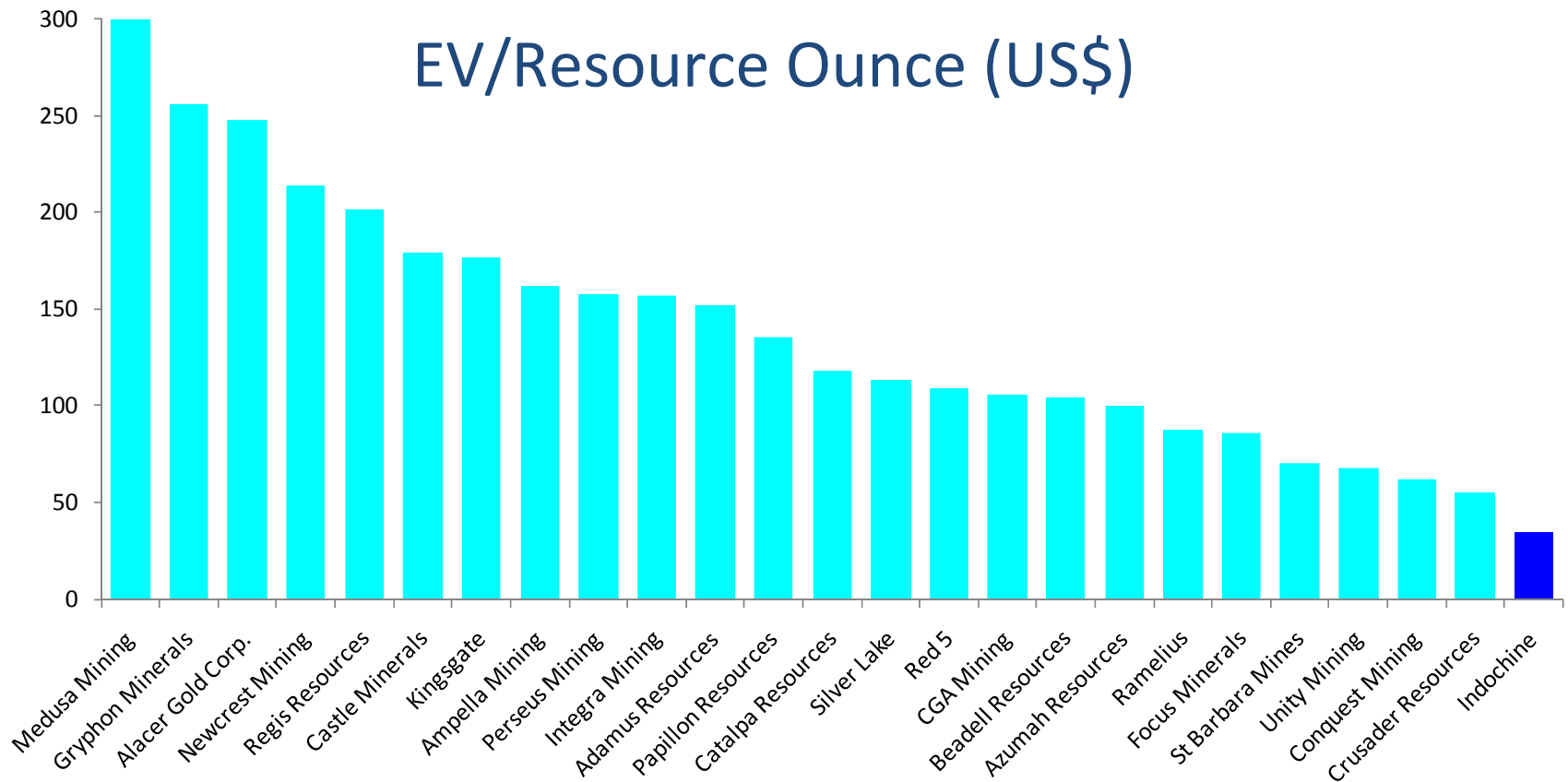
Price	18-23 cents /share (30days to 15 July 2011) VWAP 21c/sh (30day)
ASX Code	IDC
Shares issued	491M (with Mt Kare) (68M for Mt Kare) (82M in escrow)
IPO	Raised A\$20M in Dec @\$0.20/sh
Private Placement	Raised A\$16M in April 53.75M shares @\$0.30/sh
Cash	~A\$21M (June '11)
Market cap	~\$100M

Performance over One Year



Peer comparisons

Re-rating Potential



For personal use only

Board and management

Ian W Ross *Dip Bus (London), A.C.I.B (U.K.)*

- *Chairman and Non-Executive Director – ex Ivanhoe*

Stephen Gemell *BE Mining(Hons), FAusIMM, MAIME, MMICA*

- *Non-Executive Director – Project development skills*

Gavan H Farley *Dipl. Bus, MBA (Finance), MAICD*

- *Non-Executive Director, Company Secretary*

Stephen Promnitz *BSc*

- *CEO – ex Kingsgate 2IC & Bus Development; also Citigroup
- previously in Exploration & Finance, Asia & Americas*

David Meade *BSc*

- *Chief Geologist – 15 years experience in exploration in S.E. Asia
- ex- Oz Minerals (Oxiana) & PanAust*

IDC Next Year

- PFS on 100%-owned multi-million gold project
- Substantially increased resource target
- Resource definition on first of Cambodian gold and copper discoveries
- Market cap mirroring that of a developer of a major multi-million ounce gold project

MISSION

Building a major Asia/ Pacific
mining house

Summary

For personal use only

