

Growth through exploration success

For personal use only

ECHO RESOURCES LIMITED

ASX Code: EAR

Julius Gold Discovery Update

8 September 2011

Disclaimer



This document and all other information (whether in writing or otherwise) which may be made available is:

1. Supplied solely for the intended recipient and may not be copied, reproduced, further distributed to any other person or published, in whole or in part, for any purpose.
2. Provided confidentially and only to assist the recipient to make independent enquiries.

The distribution or transmission of this document in certain jurisdictions may be restricted by law and therefore persons into whose possession this document comes should inform themselves about and observe any such restrictions. Any such distribution or transmission could result in a violation of the law of such jurisdictions. Neither this document nor any copy of it may be taken to be distributed or transmitted into a jurisdiction which by law restricts or prohibits the same or to any national, citizen or resident thereof or any corporation, partnership or other entity created or organized under the laws thereof. The Company has not taken any action to permit the distribution or transmission of this document in any jurisdiction.

This document and all other information (whether in writing, verbally or otherwise) which may be made available or part thereof does not:

1. Contain all information that investors and their professional advisers would require to make an informed assessment of the following:
 - assets and liabilities, financial position and performance, profits and losses and prospects of the Company; and
 - rights and liabilities attaching to the Company's securities.
2. Constitute, or form part of, any offer to sell or issue, or any solicitation of an offer to purchase or subscribe for any securities nor shall this document, or any part of it, or the fact of its distribution or transmission, form the basis of, or be relied on, in connection with any contract.
3. Constitute a promise or representation as to the future. Recipients must make their own investigations and inquiries regarding all assumptions, risks, uncertainties and contingencies which may affect the future operations of the Company or the Company's securities.

No representation or warranty, express or implied, is made or given by or on behalf of the Company, its directors and officers or any other person as to the accuracy, completeness or fairness of the information or opinions contained in this document and all other information (whether in writing or otherwise) which may be made available or part thereof or any further information supplied by or on behalf of the Company or in connection with the Company and no responsibility or liability is accepted for any such information or opinions.

All statements in this document and presentation (other than statements of historical fact) are forward looking statements that involve risks and uncertainties. The Company can give no assurance that statements will prove accurate and results and future events could differ materially. No assurance can be given that Echo's proposed plans for the exploration and development of its project areas will proceed as planned, or that they will result in the discovery or delineation of additional or new mineral deposits, or that any mineralisation discovered will be amenable to economic extraction, or that the tenement applications will proceed to grant.

The Company, its directors and officers or any other person:

1. Do not accept liability for any loss or damage suffered or incurred by any investor or any other person however caused (including negligence) relating in any way to this document, including (without limitation) the information contained in it, any errors or omissions however caused, or the investor or any other person placing any reliance on this document, its accuracy, completeness, currency or reliability.
2. Do not accept any responsibility to inform the recipient or any other person of any matter arising or coming to its notice which may affect any matter referred to in this document.
3. To the maximum extent permitted by law, expressly disclaimed and excluded any liability of the Company, its directors and officers or any other person to the recipient or to any other person arising out of this document.

©Echo Resources Limited 2011. All rights reserved. The material in this document may not be copied, reproduced, republished or redistributed in any way without the prior written permission of Echo Resources Limited.

Highlights

Julius Gold Discovery located in the world-class Yandal Gold Province

Yandal gold production and endowment +13Moz Au

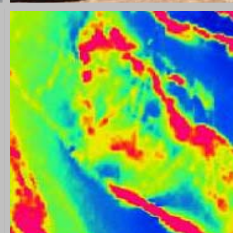
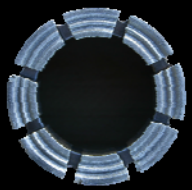
Focused management with discovery track record

Extensive exploration growth potential with large untested anomalies

Commitment to drilling high-quality targets

3,863m of RC and DC drilling completed during last program

Detailed logging and core cutting completed with assay results pending



Company Overview



Directors

Peter Andrews (Non-executive Chairman)

BSc(Hons), BJuris(Hons), LLB, FAusIMM, FAIG
Geologist

40 years experience in the funding and management of resource companies.

Ernst Kohler (Managing Director)

PhD (Geology), MBA, MAusIMM, MAIG
Geologist

Senior exploration and mining roles at the Jundee and Bronzewing Gold Mines. CSIRO Group Leader "Gold and Nickel Exploration Under Cover". Discovery track record for large gold deposits. Principal author of several chapters of CSIRO's Yandal Gold Province book.

Graham Anderson (Director / Company Secretary)

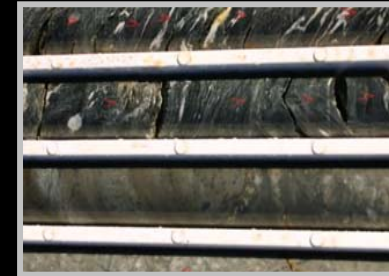
BBus

Accountant

25 years of commercial and corporate experience specialising in the mining and exploration industry.

Capital Structure

ASX code	EAR
Issued shares	72.2M
Options (unlisted)	2.45M
Market capitalisation	\$13M
Top twenty Directors	62%
	34%



Location



WESTERN AUSTRALIA



500km

YILGARN CRATON

JULIUS GOLD DISCOVERY

KALGOORLIE

PERTH

ADELAIDE

MELBOURNE

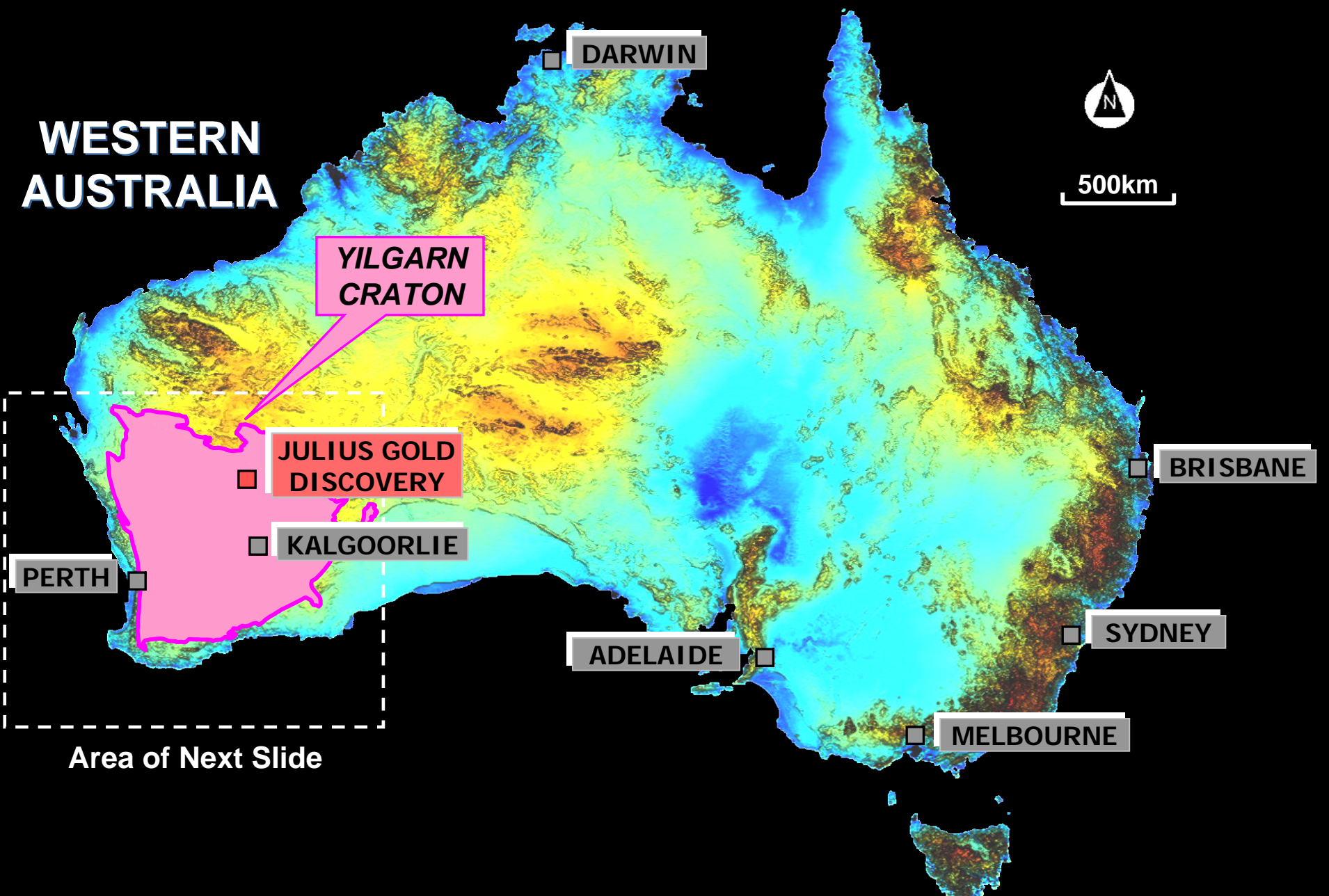
SYDNEY

BRISBANE

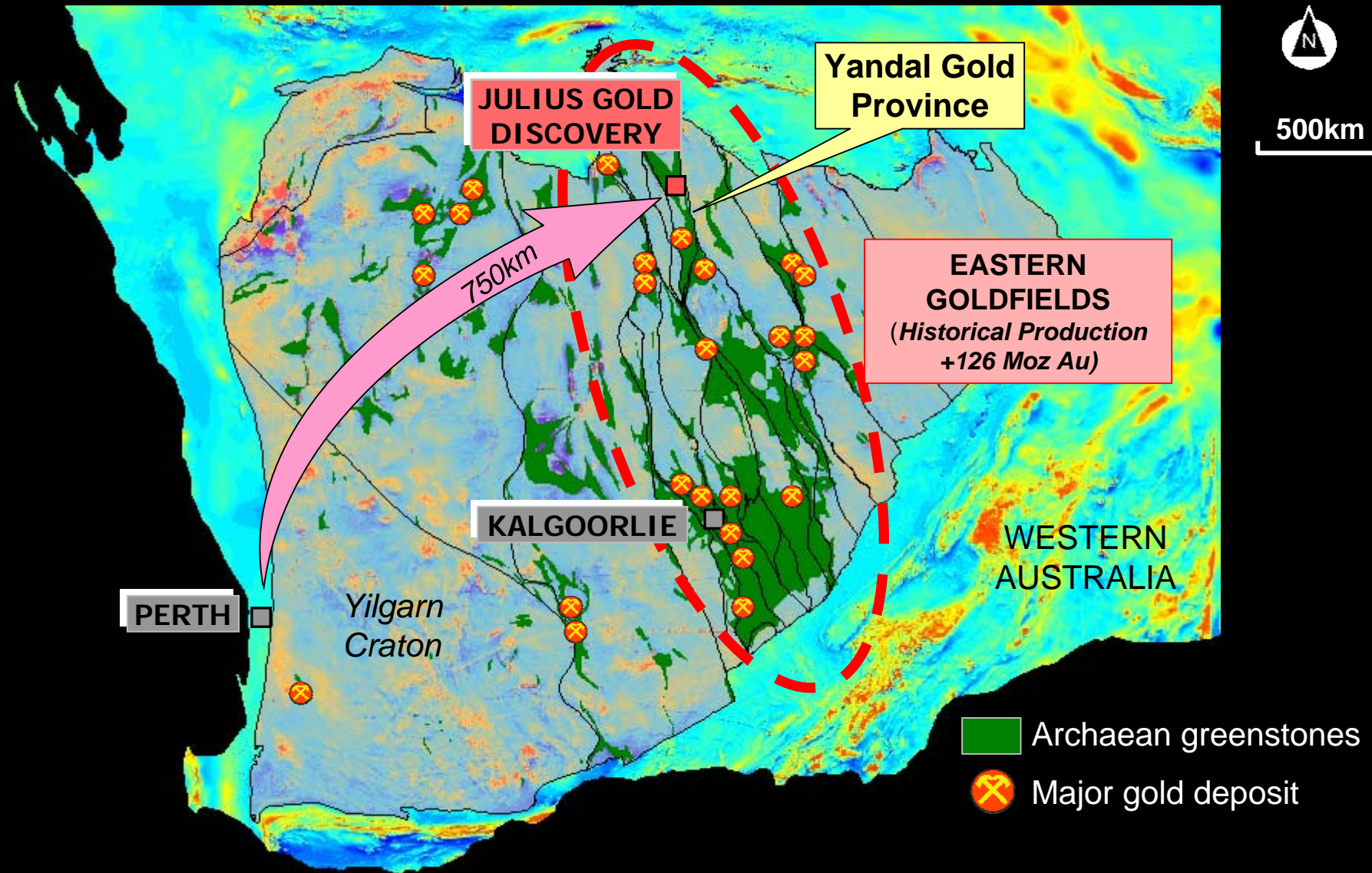
DARWIN

Area of Next Slide

For personal use only



Geological Setting



Eastern Goldfields is Australia's premier gold exploration and mining province

Contains ~30% of World gold reserves and at least 15 world-class gold deposits (+3 million ounces)

Yandal Gold Province

Highly prospective terrane for large gold deposits

Gold production and endowment exceeds 13Moz

Other major players include Newmont and Barrick

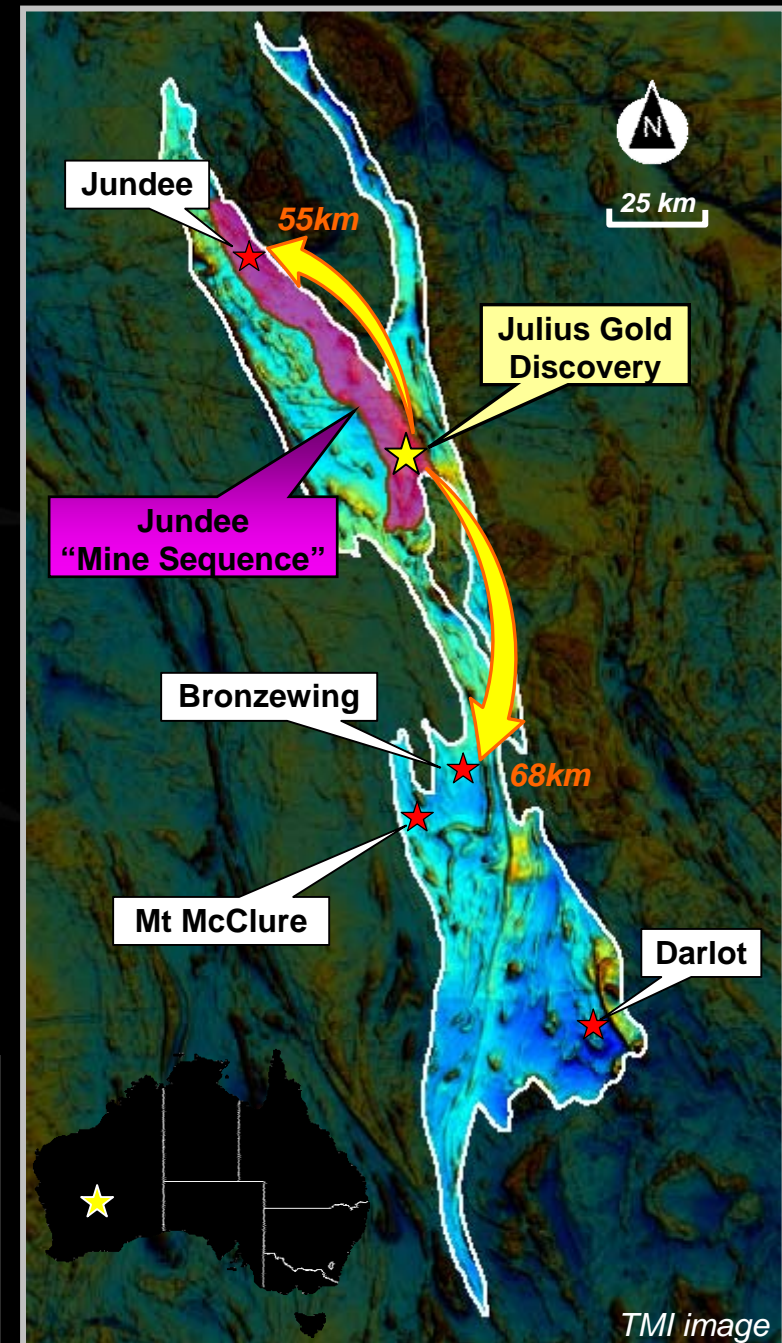
High-grade, structurally controlled gold mineralisation

Best gold ore-bodies typically found at depth (>200m) e.g.

- *Westside and Barton Deeps (Jundee)*
- *Shoot 39 (Bronzewing)*
- *Centenary (Darlot)*

Numerous untested or poorly tested gold anomalies

Julius Discovery hosted by the “Jundee Mine Sequence”



Regional Gold Potential

Major "break" ("Bungara Worm") located on Echo's ground

Marks a deep-seated shear zone or contact penetrating to a depth of +30km

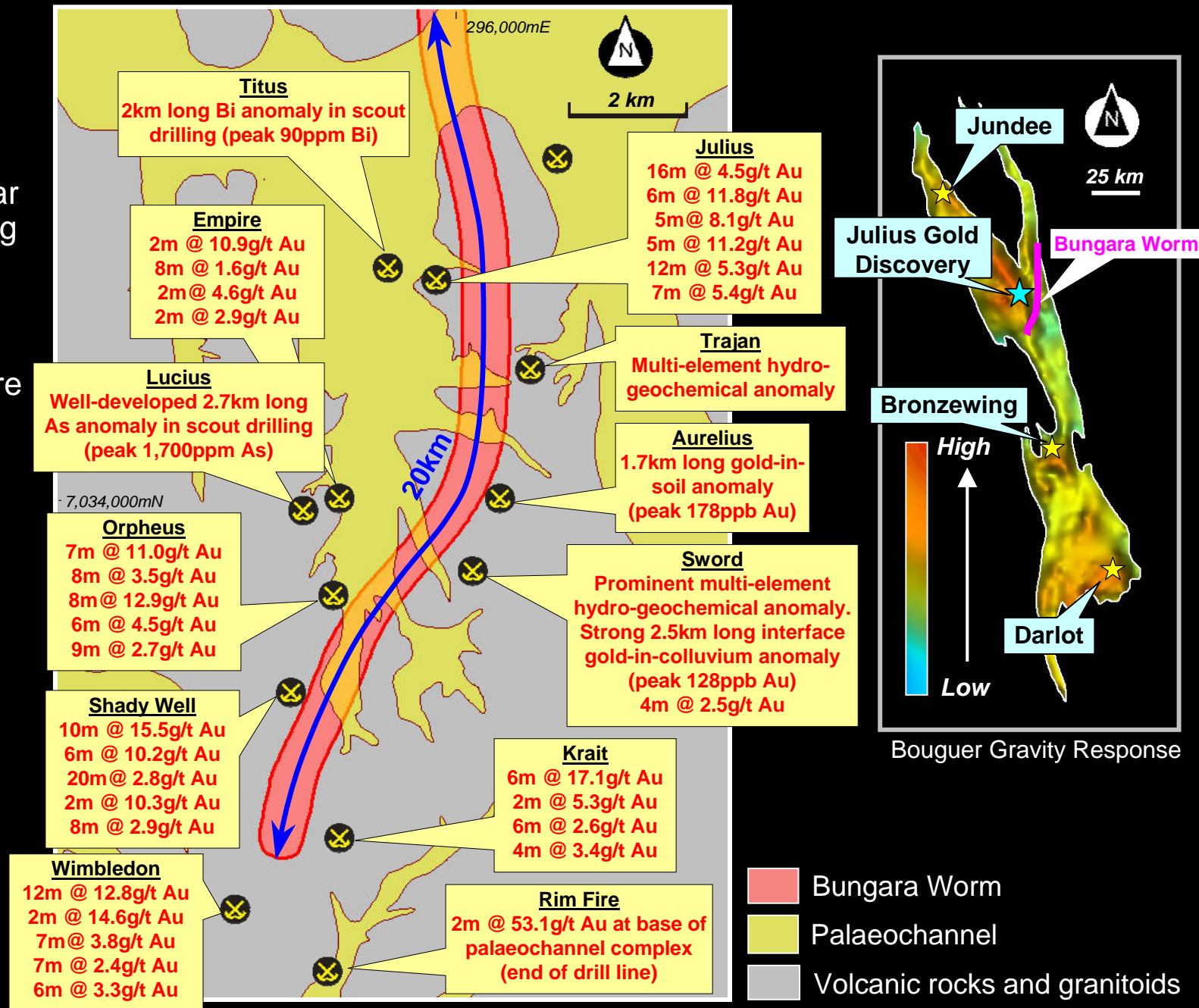
Numerous untested or poorly tested anomalies are located on Echo's ground adjacent to the Bungara Worm

Multiple under-explored mineralised corridors

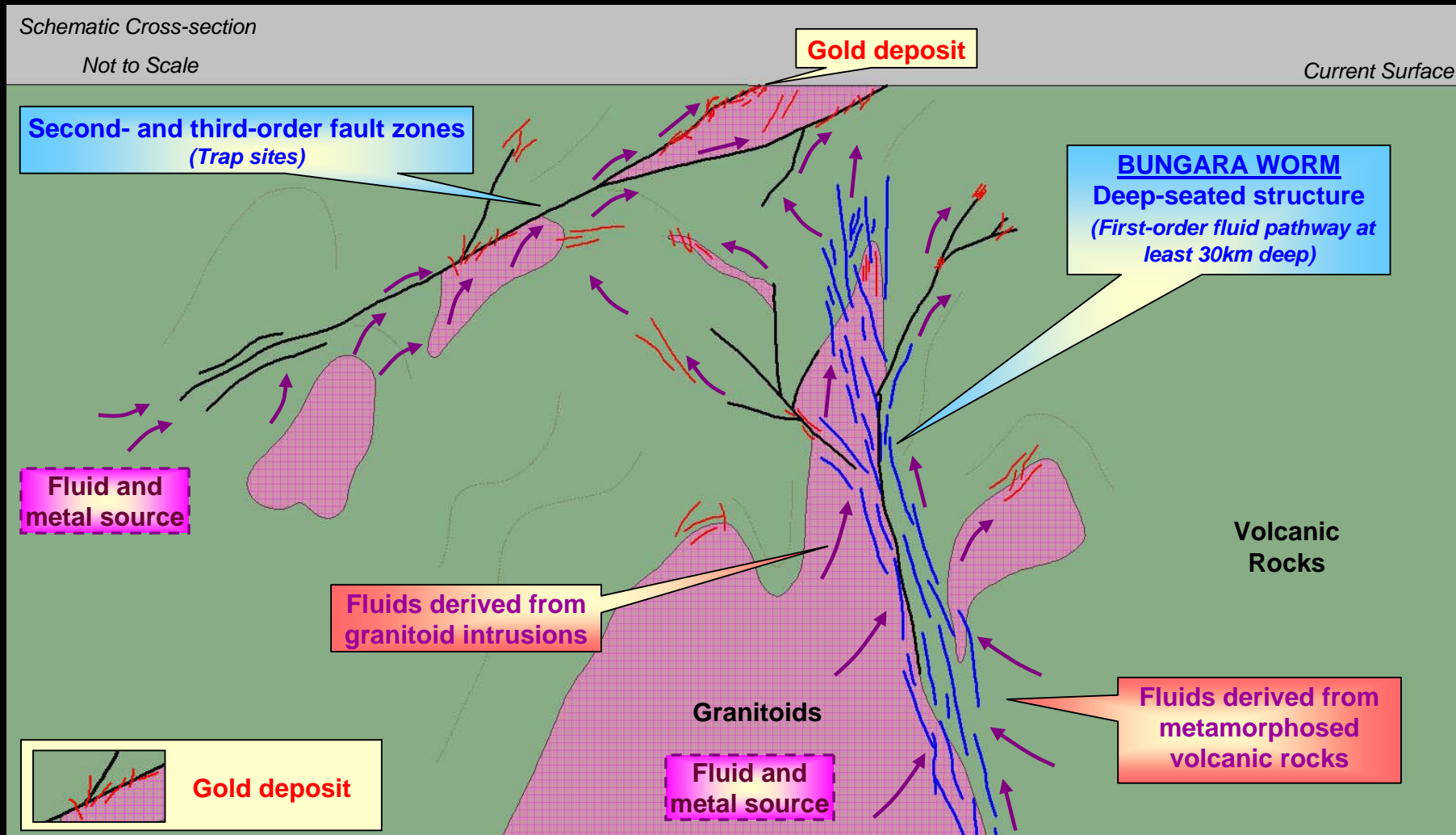
Significant depth potential

Less than 2% of all drill holes below 150m

Northern strike extensions are virtually unexplored



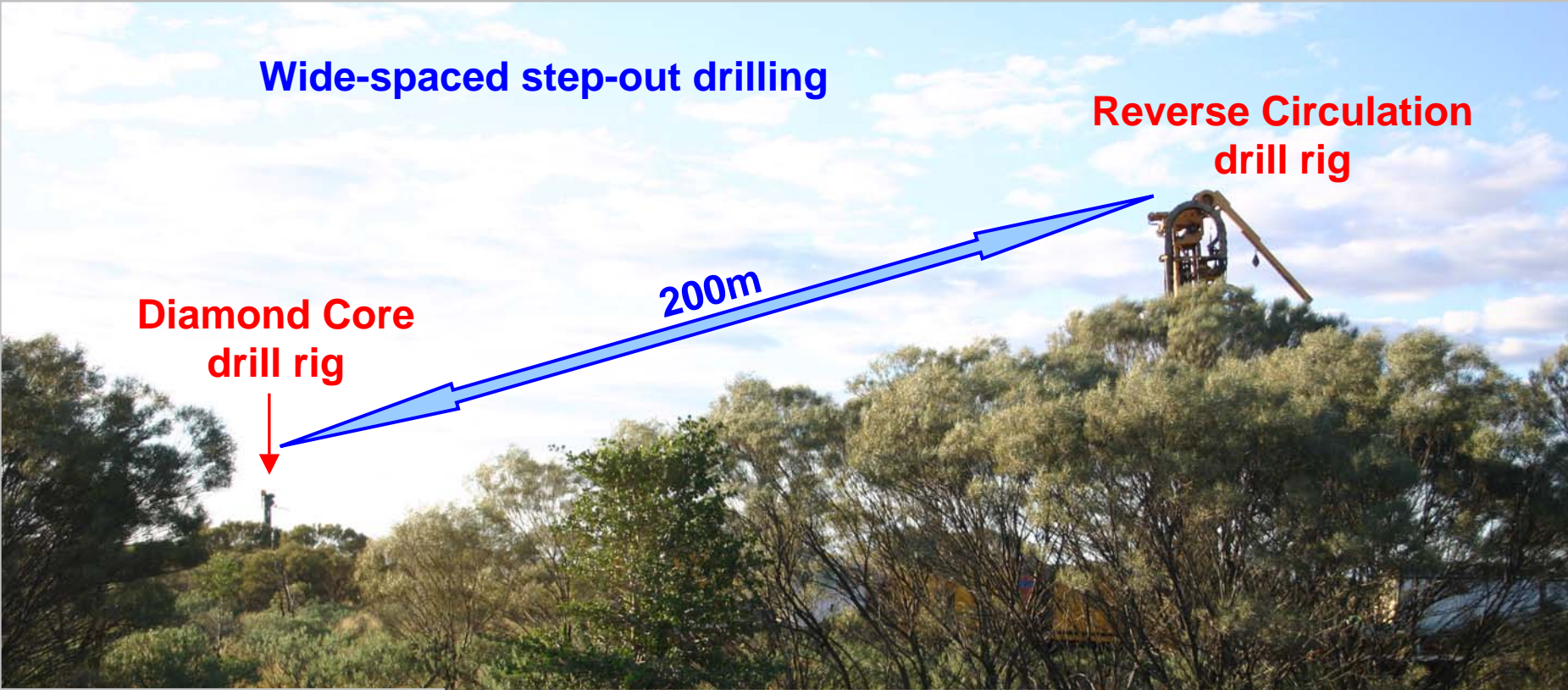
Exploration Model



The Bungara Worm is interpreted as a major conduit that enabled gold-bearing hydrothermal fluids and granitoid magmas to move from deep in the crust to higher crustal levels

The gold-bearing fluids then exploited shallower faults to reach trap sites suitable for forming gold deposits in volcanic and granitoid host rocks adjacent to, and above, the Bungara Worm

Drilling



Wide-spaced step-out drilling

Reverse Circulation drill rig

Diamond Core drill rig

200m



Diamond Core drilling

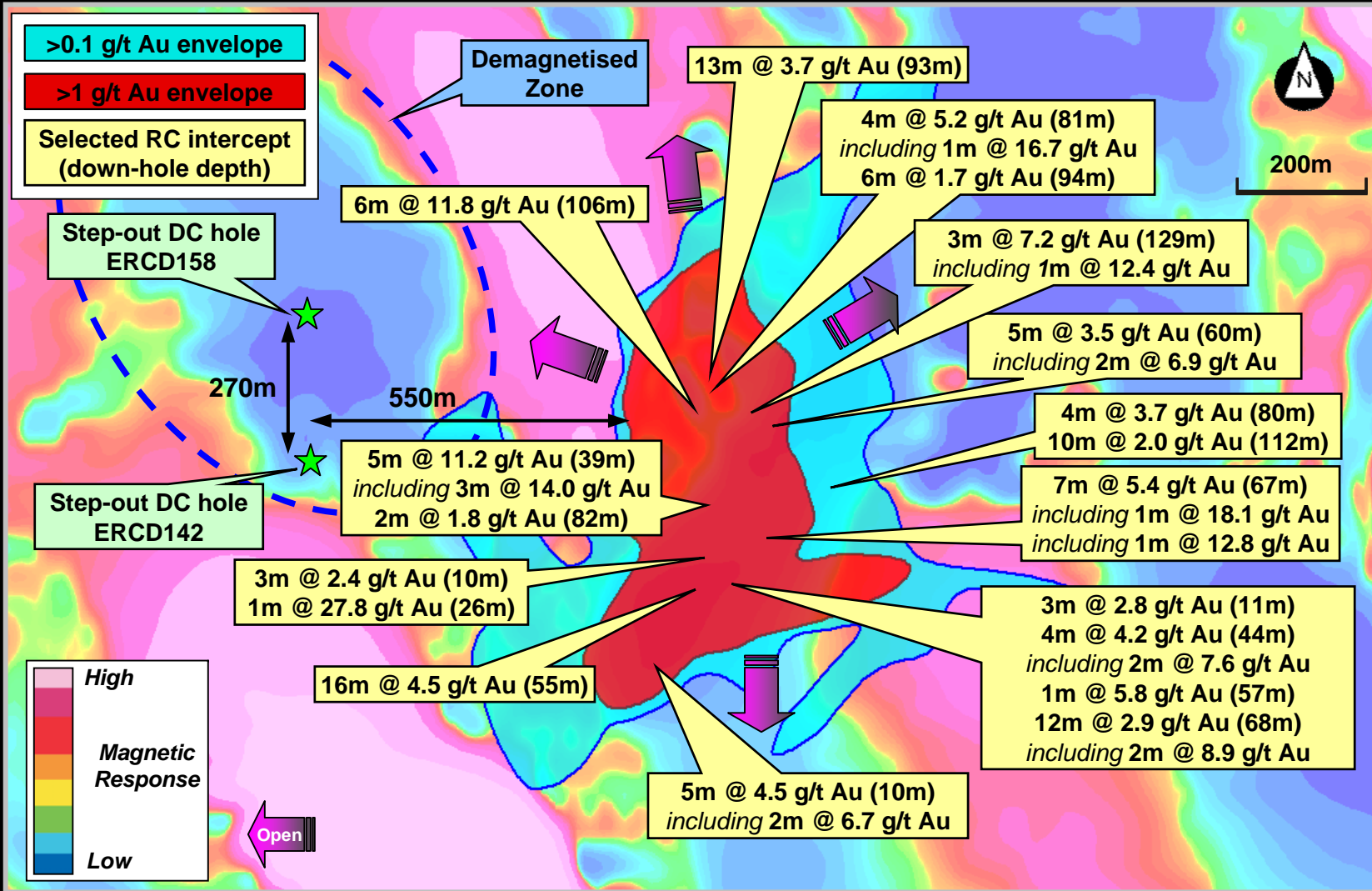


Orientating drill core



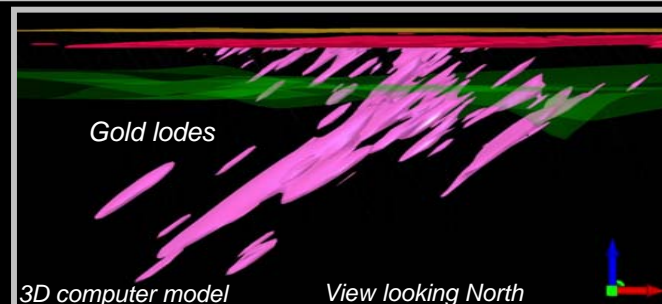
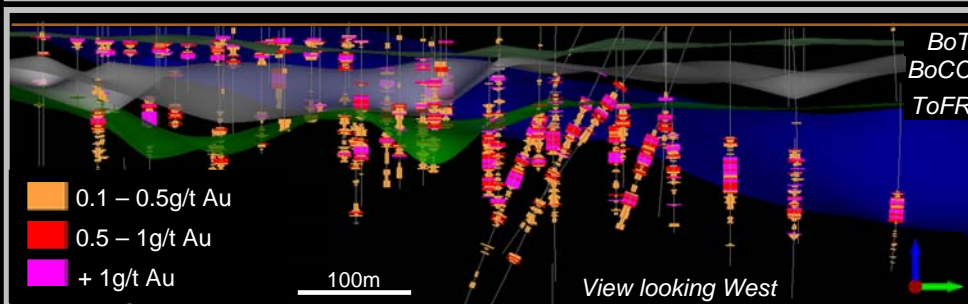
Sampling RC drill chips

Julius Gold Discovery



The map does not include assay results from the latest drilling program

Photographs of core from step-out drill holes ERCD142 and ERCD158 are shown on the next slide



Please refer to Echo's ASX announcements for a complete listing of all drilling results

Step-out drill holes

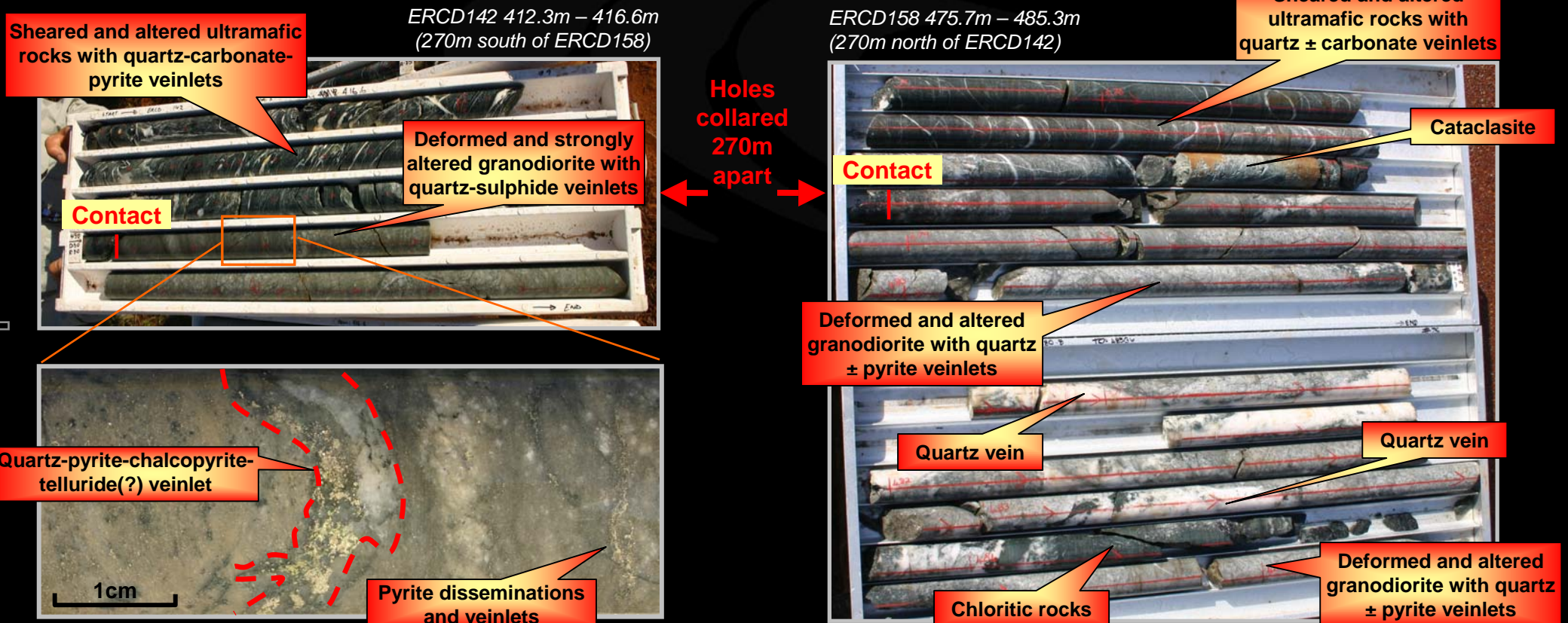


Step-out DC holes have intersected significant widths of hydrothermally altered and deformed rocks

Drilling has confirmed the down-dip continuity of the mineralised structures

Detailed logging and core cutting completed - assay results pending

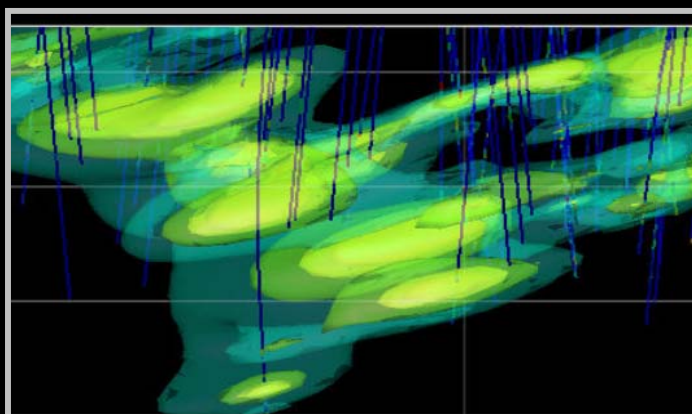
Geophysical interpretations suggest that the favourable geology may extend more than 1,500m down-dip



Width of core trays is 1m

Summary

- ✓ World-class gold province
- ✓ Virgin gold discovery
- ✓ Large untested anomalies
- ✓ Well-advanced gold targets
- ✓ Substantial upside
- ✓ Tight capital structure



FOR PERSONAL USE ONLY



www.echoresources.com.au

Enquiries regarding this document should be directed to:

Ernst Kohler

Tel: (08) 9362 4806

The information in this report that relates to Exploration Results and Mineral Resources is based on information compiled by Dr Ernst Kohler who is a Member of The Australasian Institute of Mining and Metallurgy and the Australian Institute of Geoscientists. Dr Kohler is Managing Director of Echo Resources Limited. Dr Kohler has sufficient experience which is relevant to the style of mineralisation and type of deposit under consideration and to the activity which he is undertaking to qualify as a Competent Person as defined in the 2004 Edition of the 'Australasian Code for Reporting of Exploration Results, Mineral Resources and Ore Reserves' (JORC Code). Dr Kohler consents to the inclusion in the report of the matters based on his information in the form and context in which it appears.

It is common practice for a company to comment on and discuss its exploration in terms of target size and type. The information in this presentation relating to exploration targets should not be misunderstood or misconstrued as an estimate of Mineral Resource Ore Reserves. Hence the terms Resource(s) or Reserve(s) have not been used in this context. Any potential quantity and grade is conceptual in nature, since there has been insufficient work completed to define them beyond exploration targets and that it is uncertain if further exploration will result in the determination of a Mineral Resource.