



CONTACTS
PO Box 52
West Perth
WA 6872 Australia

ABN 96 095 684 389

ASX : FNT

PHONE
+61 (08) 9295 0388
FAX
+61 (08) 9295 3480

EMAIL
info@frontierresources.com.au
WEBSITE
www.frontierresources.com.au

ASX Limited
Company Announcements Office

28th March 2012

Exploration Licence 1951 - Mt Schrader Granted

Frontier Resources Ltd is pleased to announce that Exploration License (EL) 1951 (Mt Schrader) has been granted in West New Britain Province, Papua New Guinea (PNG), covering approx. 2,477 square kilometres. The area encompasses Frontier's highly prospective Mt Andewa exploration project on EL 1345 (Mt Andewa) and has received very limited historic exploration. EL 1951 significantly enhances Frontier's exploration portfolio for precious and base metals in the district.

Mt Schrader is subject to a non-binding Heads of Agreement (Agreement) entered into with a wholly-owned subsidiary of Newcrest Mining Limited (Newcrest), which was announced on 6 March 2012. The Agreement sets out a number of principles for the proposed farm-in by Newcrest into the Mr Andewa exploration project, and included an option for Newcrest to also earn a 60% interest in Mt Schrader upon grant of EL 1951 by increasing its total farm-in commitment, by A\$4.0 million, to the aggregate total amount of A\$19.25 million over 4 years commencing 1 January 2012.

Frontier is pleased to announce that Newcrest has indicated it wishes to include Mt Schrader under a single joint venture for the proposed farm-in, subject to the parties successfully completing negotiation of the detailed documentation. A number of other conditions apply to the proposed farm-in, including completion of a satisfactory due diligence by Newcrest, obtaining all necessary government and regulatory approvals and obtaining the parties' respective internal approval.

The Mt Schrader stratovolcano crater has several quasi-circular topographic features that have been partially explored (Figures 1 and 2). Alteration zones have been identified and gold mineralisation includes two stream sediment anomalies to 0.175 g/t gold, plus copper, arsenic and mercury (pathfinder elements) in hydrothermal breccia rock samples to 530 ppm Cu, 1020 ppm and 17,900 ppm, respectively. . These are all favourable indicators for possible gold mineralisation in this type of 'high level' geological environment.

The Schrader EL also covers two major WNW trending structural zones (and a N-S zone) that could host gold and/or copper mineralisation. Andewa's Komsen gold Prospect is within a WNW trending mineralised structure. These structural zones are important for the localisation of mineralised intrusions further east in New Britain, such as the Kulu - Awit trend that hosts (SE to NW) the Nakru, Plesyumi, Simuku and Mt Penck deposits, plus other prospects.

Exploration at Mt Schrader will likely consist of an aeromagnetics + radiometrics geophysical survey, evaluation of ASTER hyperspectral (satellite) data, and SRTM digital imagery to locate clay alteration zones and topographic anomalies. Detailed field evaluation will comprise reconnaissance exploration in the structural zones utilising panned concentrate stream sediment sampling, rock chip/float sampling, soil sampling, geological mapping and potential trenching. Further geophysics comprising Induced Polarisation will be a possible tool used to assess high priority target areas identified.

The Mt Andewa and Mt Schrader craters are 150km and 180km west of the port of Kimbe, the capital of West New Britain Province. The areas are accessible by barge, boat, helicopter and locally logging tracks.

For personal use only

Figure 1. An SRTM topographic image of the Mt Schrader Exploration Licence in West New Britain Province, surrounding the highly prospective EL 1345 - Andewa.

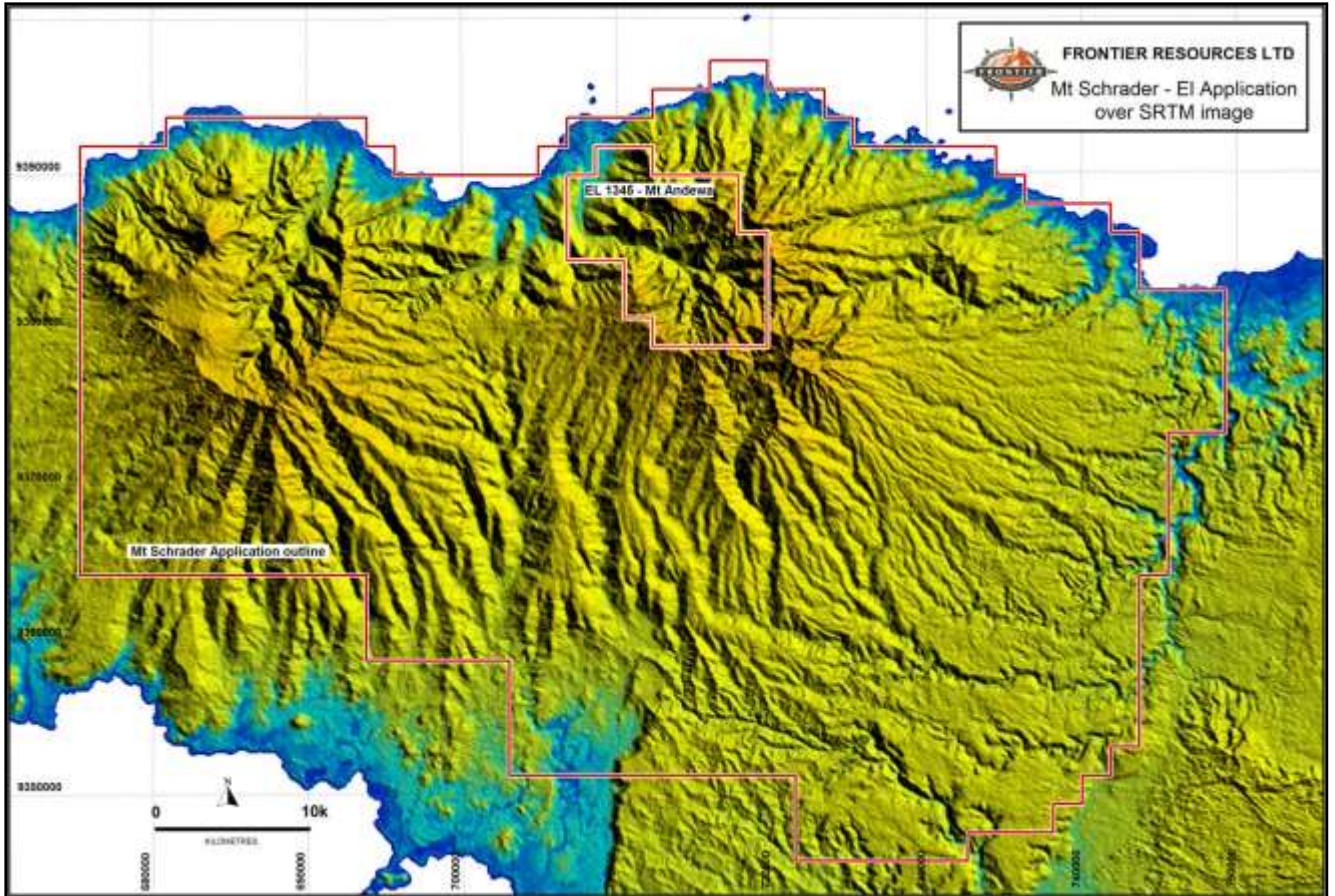
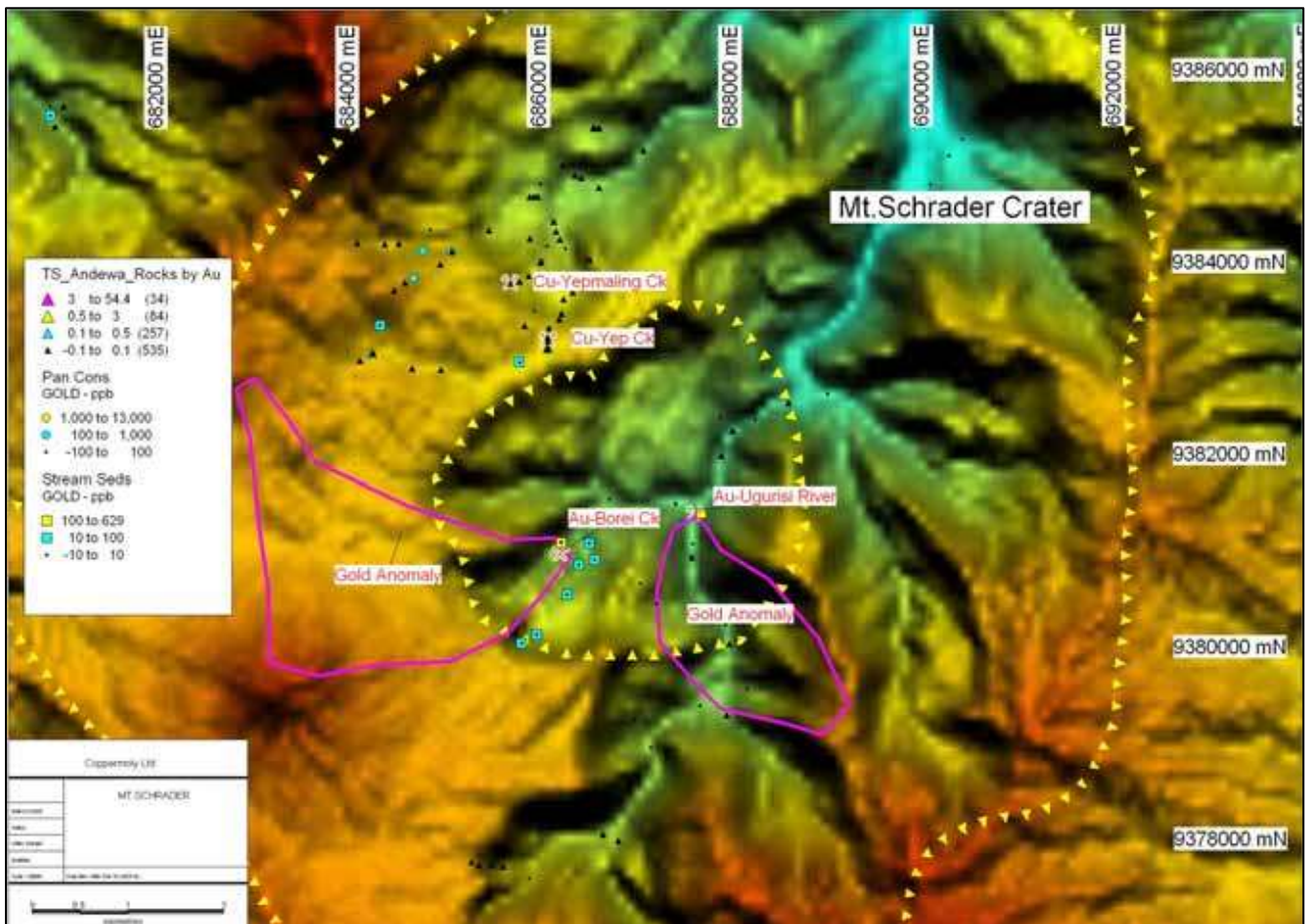


Figure 2. Close-up SRTM topographic image of the Mt Schrader crater showing gold anomalous areas in drainages (from late 1980's exploration results), the crater rims, plus several circular features. Note the paucity of existing sampling.



For additional information relating to Frontier Resources, please visit the Company's website at www.frontierresources.com.au or feel free to contact me.

FRONTIER RESOURCES LTD



P.A. McNeil, M.Sc.

CHAIRMAN / MANAGING DIRECTOR

The information in this report that relates to Exploration Results and Mineral Resources is based on information compiled by, or compiled under the supervision of Peter A. McNeil - Member of the Aust. Inst. of Geoscientists. Peter McNeil is the Managing Director of Frontier Resources, who consults to the Company. Peter McNeil has sufficient experience which is relevant to the type of mineralisation and type of deposit under consideration to qualify as Competent Person as defined in the 2004 Edition of the Australasian Code of Reporting Exploration Results, Mineral Resources and Ore Resources. Peter McNeil consents to the inclusion in the report of the matters based on the information in the form and context in which it appears.

For personal use only