

For personal use only

---

# CONCRETE ANALYST'S PRESENTATION

---

31 May 2012

---

**Mark Malpass**

*Chief Executive of Concrete Division*

## Disclaimer

This presentation contains not only a review of operations, but also some forward looking statements about Fletcher Building and the environment in which the company operates. Because these statements are forward looking, Fletcher Building's actual results could differ materially. Media releases, management commentary and analysts presentations, including those relating to the February 2012 half year results announcement, are all available on the company's website and contain additional information about matters which could cause Fletcher Building's performance to differ from any forward looking statements in this presentation. Please read this presentation in the wider context of material previously published by Fletcher Building.

For personal use only



# Agenda

---

**Division result**

**Business unit overviews**

**Key strategic issues**

For personal use only



# Concrete Division

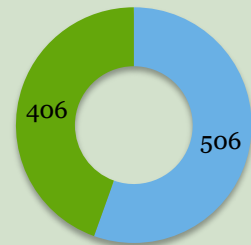
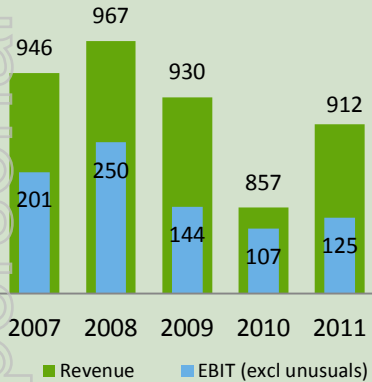


## Division Overview

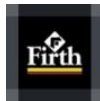
The Concrete division consists of a vertically integrated concrete business in New Zealand and concrete products businesses in Australia.

## Summary Financials (NZ\$M)

Revenue source FY11



## Key Brands



## Business Description

### Firth (NZ)

NZ's leading national concrete company supplying readymix and masonry products throughout the country.

### Winstone Aggregates (NZ)

NZ's largest cement manufacturer and distributor of aggregates and sand to roading, readymix concrete and concrete product industries, and other building and civil engineering customers.

### Humes (NZ)

NZ's leading supplier of manufactured concrete infrastructure products to civil contractors, developers, local governments and other authorities.

### Golden Bay Cement (NZ)

NZ's largest cement manufacturer for readymix producers, concrete product manufacturers, building materials distributors, paving and construction contractors, and other major users

### Rocla Pipelines (AUS)

Leading Australian supplier of manufactured concrete infrastructure products to civil contractors, developers, local governments and other authorities.

### Rocla Quarry (AUS)

Construction sands manufacturer supplying sands to the building & construction industries throughout Australia.



# Concrete Results

NZ\$m	Dec 2011 6 months	Dec 2010 6 months	%r
<b>Sales</b>	468	442	+6
<b>EBITDA</b>			
•Concrete NZ	47	51	-8
•Concrete Aust.	44	36	+22
<b>Total EBITDA</b>	91	87	+5
<b>EBIT</b>	60	57	+5
<b>Funds Employed</b>	1052	1027	
<b>EBITDA/sales %</b>	19.4	19.7	
<b>EBIT/sales %</b>	12.8	12.9	
<b>ROFE %</b>	11.4	11.1	

## NZ Concrete

Volume declines in cement, aggregates and masonry reflecting weaker construction markets

Ongoing cost out programme helped offset volume declines

## Australia Concrete

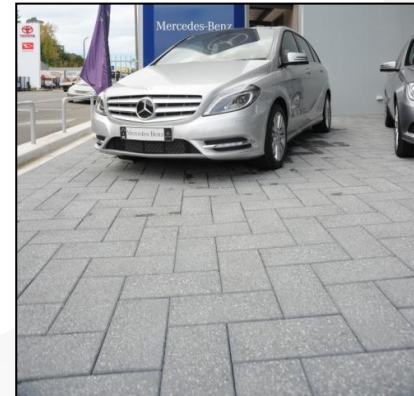
Strong first half results through a focus on product pricing and operational enhancements





# Firth Industries

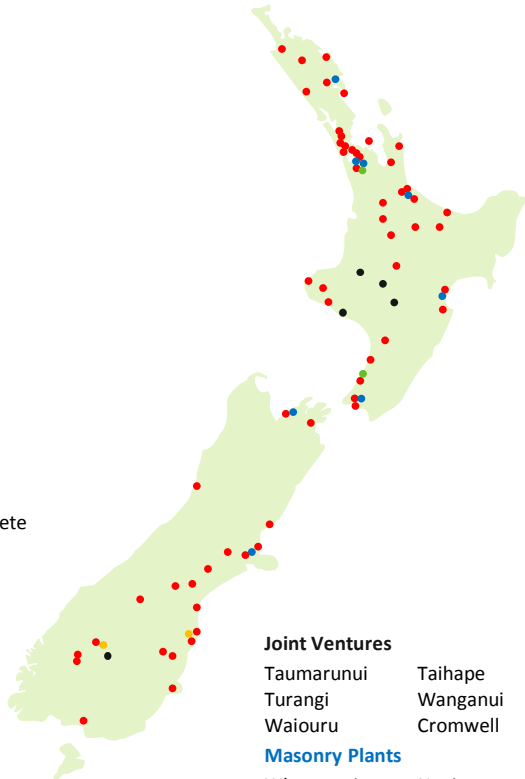
For personal use only



# Firth Industries

## Certified Plants

- Kaitia
- Puketona Junction
- Russell
- Whangarei
- Dargaville
- Marsden Point
- Matakana
- Wesltsford
- Mangawhai
- Silverdale
- Albany
- Henderson
- Hamer Street
- East Tamaki
- Leonard
- Road
- Waiheke Island
- Pukekohe
- Takanini
- Auckland Airport
- Thames
- Whitianga
- Whangamata
- Waihi
- Kaikati
- Mt Maunganui
- Te Puke
- Whakatane
- Te Awamutu
- Te Rapa
- Rotorua
- Kawerau
- Tokoroa
- Taupo
- Awatoto
- Hastings
- New Plymouth
- Stratford
- Hawera
- Palmerston North
- Otaki
- Kapiti
- Belmont
- Aotea Quay
- Nelson
- Blenheim
- Greymouth
- Stockton
- Hamner Springs
- Amberly
- Darfield
- Hornby
- Canterbury Concrete
- Ashburton
- Geraldine
- Fairlie
- Timaru
- Twizel
- Hildetherpe
- Oamaru
- McRaes Mine
- Palmerston
- Dunedin
- Queenstown
- Wanaka
- Edendale
- Invercargill



## Joint Ventures

- Taumarunui
- Turangi
- Waiouru
- Taihape
- Wanganui
- Cromwell

## Masonry Plants

- Whangarei
- Drury
- East Tamaki
- Mt Maunganui
- Napier
- Belmont
- Nelson
- Christchurch

## Oamaru Shingle Supplies

- Hildetherpe
- Parkburn
- Cromwell

## Dricon Plants

- Tuakau
- Waikanae

## NZ's largest ready mix producer

66 plants (including 6 unmanned)

30%+ market share

6 Joint Venture plants (all 50% share except one at 32.5%)

New state of art Central Mix plant opening in Te Rapa May 2012

## NZ's largest masonry manufacturer

8 plants owned

50% JV with 2 plants

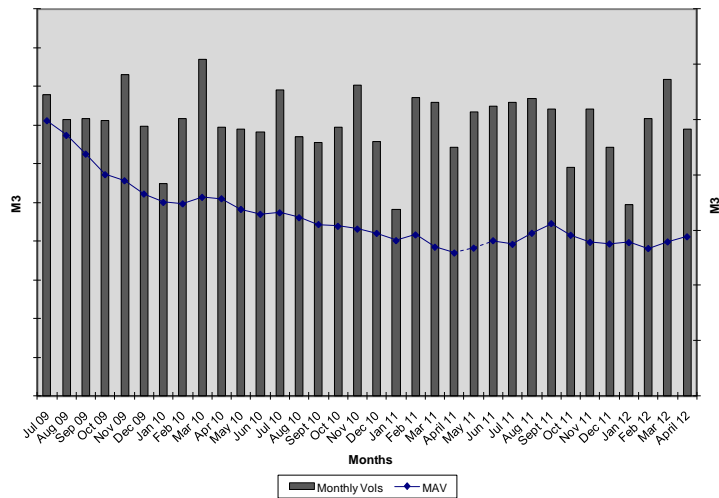
**Employ 565 people (down from 675 in 2008)**



# Firth Industries - Readymix

For personal use only

**Certified volumes and MAV**



**Volume is the issue in most markets excluding Christchurch**  
**Readymix footprint review to result in several plant closures, relocation or capacity sharing agreement**

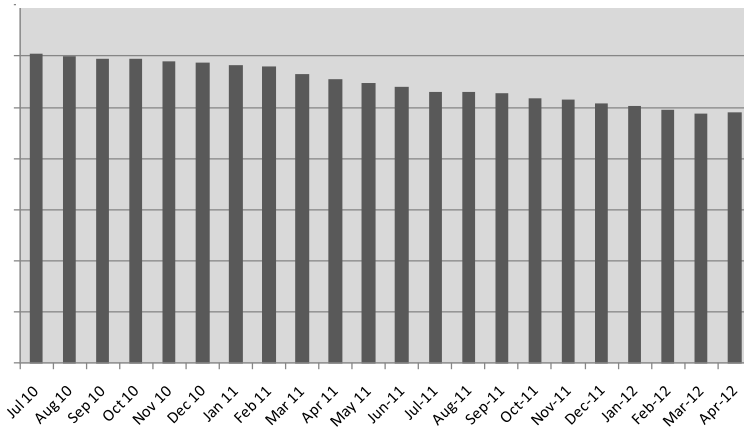
**Masonry market decline**

Christchurch residential market stagnated pending rebuild decisions

**Masonry cost per tonne down 4% over past 3 years, excluding raw materials costs**

**Northern plants being reviewed**


**Masonry Volumes**





# Winstone Aggregates - Overview

For personal use only



**Contact Us:**

**Revenue Support Office**  
822 Great South Road, Penrose  
Auckland  
P: (09) 295 9904 F: (09) 295 9373

**Customer Services/Trafficport**  
48 Humea Road, Penrose  
P: (09) 295 1000 F: (09) 295 1001

**Airport Road Sand Plant**  
106 Airport Road, State Highway 21  
Ruhua  
P: (07) 843 9344 F: (07) 843 9345

**Amberley Sand Plant**  
Amberley Beach Road, Amberley  
Christchurch  
P: (03) 314 9127 F: (03) 314 8908

**Avonlea Silage Plant**  
Maha Road, Avonlea, Napier  
P: (06) 835 8474 F: (06) 835 4479

**Belmont Quarry**  
Hobden Crescent, Belmont  
Lower Hutt, Wellington  
P: (04) 565 9151 F: (04) 565 9155

**Cambernet Hardrock & Pacific Pumice**  
2964 Old Coach Road, R.D. 6  
Claremont, Te Pahi 3246  
Ph: (07) 533 3967 F: (07) 533 3962

**Dry Creek Cement**  
Howards Hill Rd, Howards  
Wellington  
P: (04) 953 7074 F: (04) 565 9155

**Flat Top Quarry**  
Haturu Road, R.D. 3, Kawakapa  
P: (09) 420 9545 F: (09) 420 9550

**Hastings Disposal/Reuse Centre**  
1438 Omaha Road, Hastings  
P: (06) 879 6908 F: (06) 879 6950

**Helevalle Sand Plant**  
20 Saleyford Street, Helevalle  
P: (09) 420 7299 F: (09) 420 7509

**Humea Quarry**  
Humea Gorge Road, Humea Papakura  
P: (09) 299 5900 F: (09) 299 3244

**Otaika Quarry**  
State Highway 1, Otaika, Whangarei  
P: (09) 430 4400 F: (09) 430 0072

**Otaki Quarry**  
Mata Road, Otaki  
P: (06) 314 8032 F: (06) 314 8005

**Pelton Sand Plant**  
Marine Parade, Pelton, Lower Hutt  
P: (04) 568 7792 F: (04) 570 9400

**Pukukawa Quarry**  
Smeades Quarry Rd, Pukukawa  
P: (09) 295 2800 F: (09) 295 4888

**Pukukawa Island Quarry**  
Island Road, Pukukawa Island  
P: (09) 275 5400 F: (09) 275 2850

**Punalu Quarry**  
233 Old West Coast Road, Takahuri  
Christchurch  
P: (09) 238 6001 F: (09) 238 6002

**Rangitiki Quarry**  
Rangitiki Aggregates Ltd  
Kakariki Road, R.D. 1, Marton  
P: (06) 327 8646 F: (06) 327 8624

**Three Kings Quarry**  
985 Mt Eden Road, Three Kings  
Auckland  
Ph: (09) 842 2854 F: (09) 624 1485

**Waikanae Quarry**  
Rekurusangi Road, Waikanae  
P: (06) 293 4003 F: (06) 293 3398

**Waikanae Aggregates Ltd**  
Maha Road, Carterton  
P: (06) 279 8000 F: (06) 279 8307

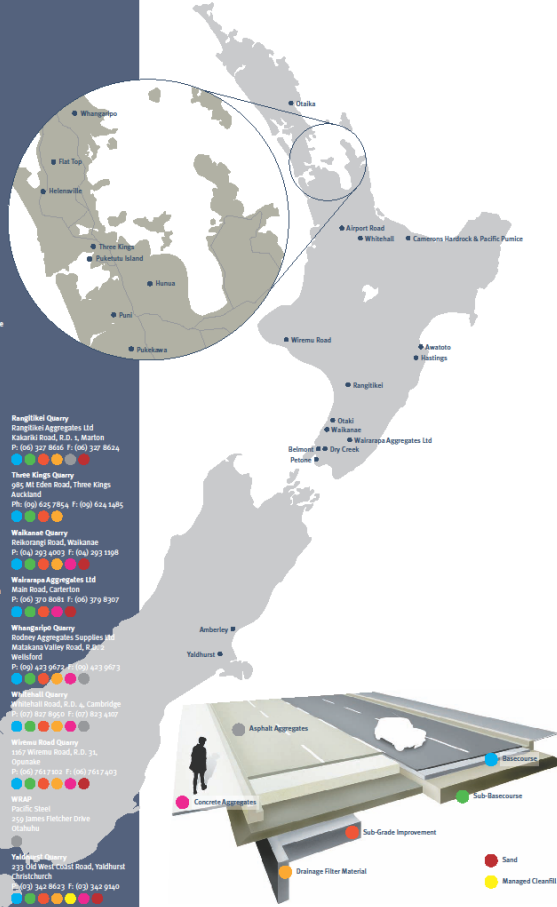
**Whangape Quarry**  
Rodney Aggregates Supplies Ltd  
Makarewa Valley Road, 1 and  
Wellford  
P: (09) 423 9872 F: (09) 423 9873

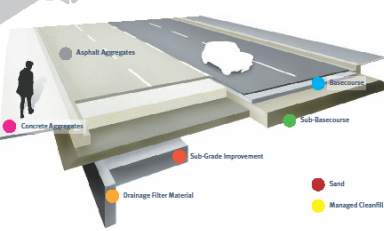
**Whitkai Quarry**  
Whitkai Road, R.D. 1, Cambridge  
P: (06) 894 9000 F: (06) 894 4107

**Winstone Road Quarry**  
1407 Winstone Road, R.D. 31,  
Opotiki  
P: (06) 2617 800 F: (06) 2617 4073

**WIPAP**  
Pacific Street  
259 James Fletcher Drive  
Otago

**Takahuri Quarry**  
233 Old West Coast Road, Takahuri  
Christchurch  
P: (09) 238 6001 F: (09) 238 6002





Disclaimer: Owners and users of Winstone Aggregates must make their own assessment of the products for their own conditions. All queries regarding product specifications, purpose or application should be directed to a Winstone Aggregates Trading Account Manager.

NZ's largest quarry operator

19 hardrock operations (incl JV)

Four sand operations

Four cleanfill sites

NZ's largest licensed cleanfill operator

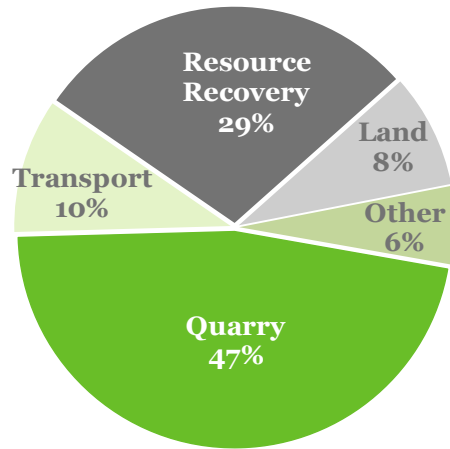
A bulk transport operator with 66 units in service including 12 bulk cement tankers leveraging off group company needs

Employs 291 people nationally



# Winstone Aggregates - Quarry

FY11 EBIT Breakdown



**FY2011 volumes 28% off the top of the cycle**

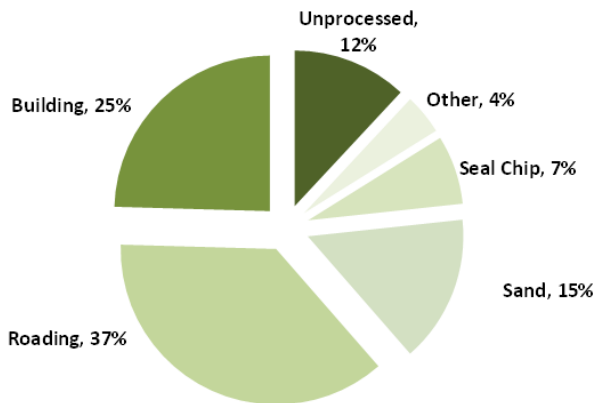
**Resource Recovery/Cleanfill diversification delivering ahead of budget**

**Average selling price reset underway**

**Costs controlled with lean operating practices**

**Christchurch rebuild a significant play, along with Waterview work commencing**

FY2011 Quarry Sales Volume



For personal use only



# Winstone Aggregates – Quarry End Use

For personal use only



## Wiri

43ha (net) industrial zoned land on two sites  
Development and Sales commenced with 4 hectares to Kiwirail

## Three Kings

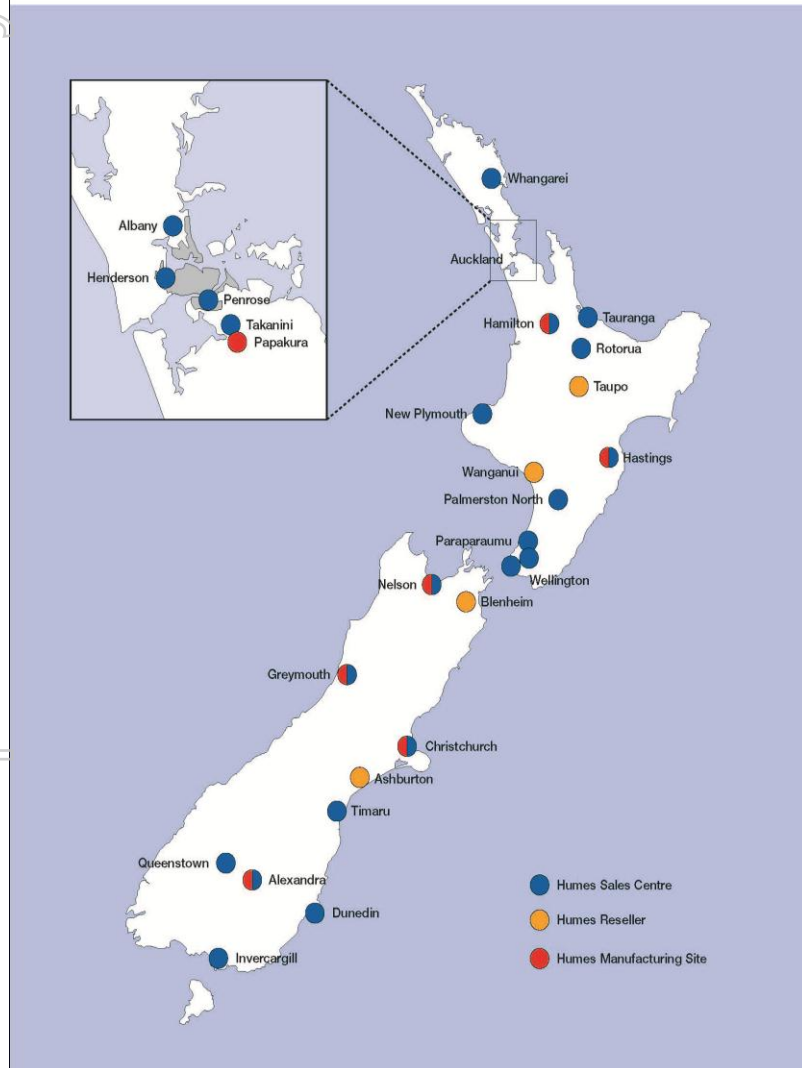
15ha future commercial, residential  
Filling commenced April 12  
Discussions continue on releasing value of land prior to completion of filling

## Pokeno

16ha industrial zoned land  
Ready to develop  
Creating saleable titles by boundary adjustment  
Interest has grown in FY12



# Humes Concrete Pipe & Precast - Overview



**NZ's largest pipeline systems company**

22 sales centres

**NZ's largest concrete pipe manufacturer**

Four pipe manufacturing plants

New vibration technology plants at Papakura (Auckland) & Rolleston (Christchurch)

**Large concrete product manufacturer**

7 precast manufacturing plants

- Drainage products
- Rural product
- Box culverts
- Access pits

**Significant manufacturer of concrete wastewater treatment systems**

**Large plastic pipe, valve, fittings and streetware distributor**

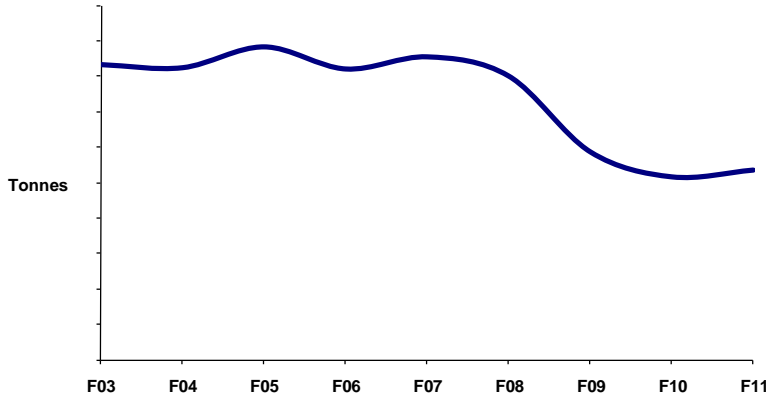
**NZ's leading supplier of roading envelope hardware including safety barriers & lighting poles**

**Employs 365 people nationally**



# Humes - Pipe

Concrete pipe sales volumes

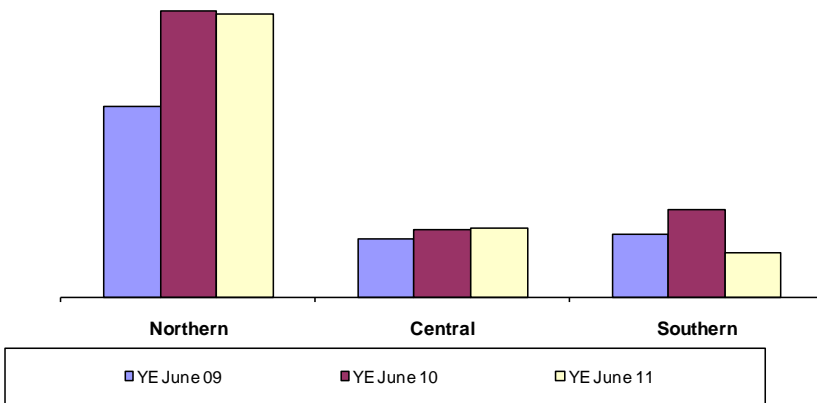


F09 saw dramatic decline in pipe market and sales volumes

Quoting volumes increased by 32% in FY10 and then fell 10% in FY11

Assessed market share has remained stable and was around 52% in FY11

Concrete pipe quoted tonnes



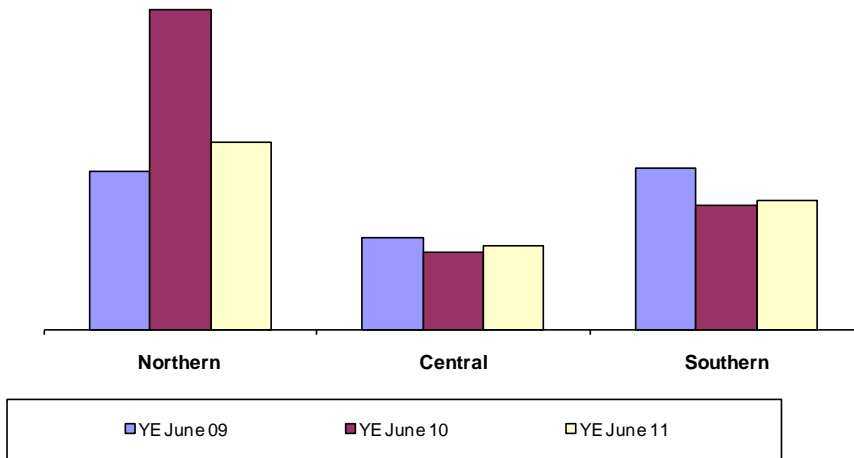
For personal use only





# Humes - Precast

Concrete precast quoted tonnes



Source : Humes & Pipeline Systems

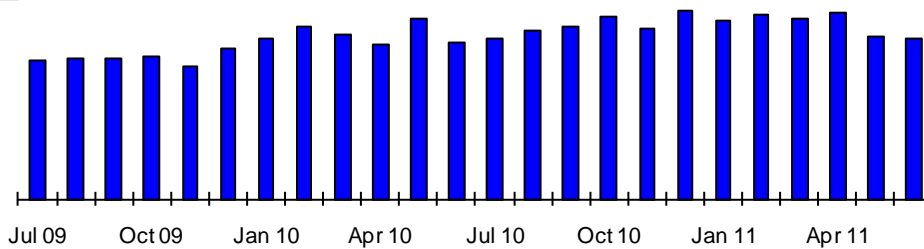
## New sleeper plant commissioned in Hamilton

Double capacity to meet 7 year Kiwi Rail contract – 150,000 sleepers per annum

Significant environmental improvement and health & safety improvements

**All products order backlog June 11 is 18% higher than June 09**

Total all products open sales orders \$



Source : Humes & Pipeline Systems



For personal use only



# CSP Pacific

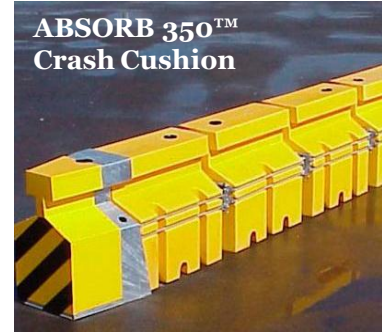
Leading supplier of roading envelope hardware including safety & lighting



TL-1 Plastic Barrier



TL-4 Steel Barrier



ABSORB 350™  
Crash Cushion



Raptor Pole Protector



X-350 Terminal End



Bridge Rail and Posts



Safence™  
Wire Rope Barrier



Universal TAU-II™  
Crash Cushion



Multiplate Structures



Decorative Columns



Oclyte™  
Streetlight Columns

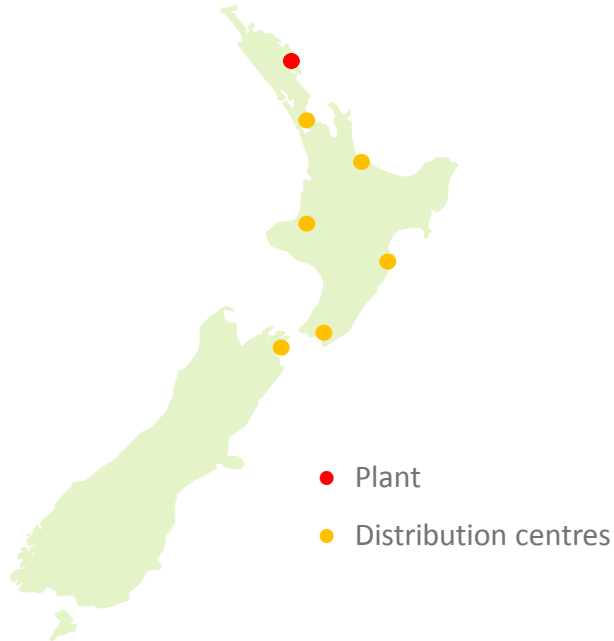


Breakaway  
Signpost System

For personal use only



# Golden Bay Cement - Overview



**NZ's largest cement manufacturer**

**1 million tonne, strategically located plant (North Island 70% market)**

**\$105m upgrade completed 2005, increased capacity and updated plant; next 5 years plant maintenance capex only**

**State of the art distribution centre in Auckland commissioned Feb 2010**

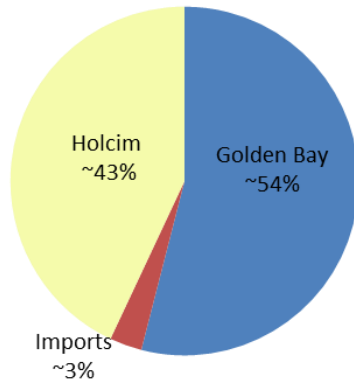
**Key employer in the Whangarei district with 226 employees**

**Winner of EECA 2012 Renewable Energy Award**



# Golden Bay Cement – Market position

## New Zealand Market Share estimate



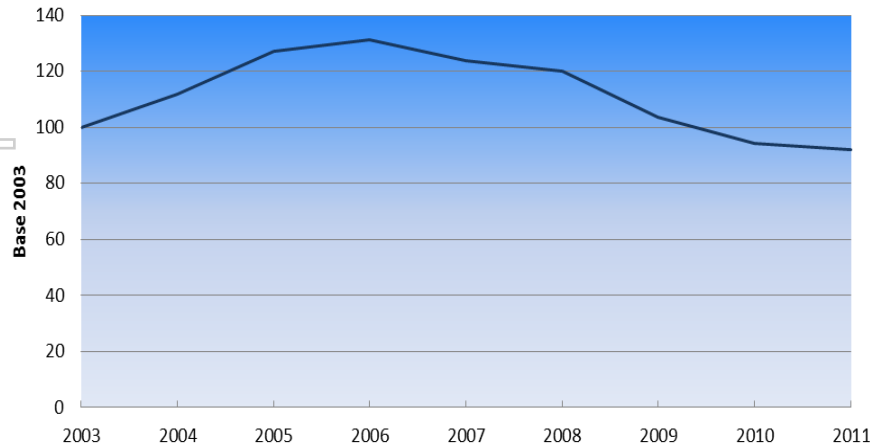
Source : Golden Bay Cement

**FY11 NZ Sales down 2% pa**

**Share position strong**

**Export sales steady 17% of total sales**

## New Zealand sales volumes



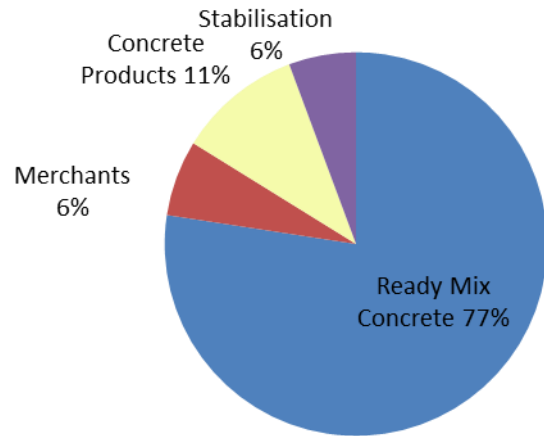
For personal use only



# Golden Bay Cement – Competitive Environmental

For personal use only

New Zealand sales analysis FY11



**Cement imports have increased due to high exchange rates and low shipping rates**

**Clinker grinding plant being considered by syndicate in Mt Maunganui**

**Difficult to recover cost increases in current environment**

**Key competitor approaching decision time on plant replacement**

**High leverage to an increase in volumes**





# Rocla Pipeline Products - Overview

For personal use only



**One of the two largest concrete pipe manufacturers, market share 35%**

**Largest concrete poles manufacturer**

**One of two largest railway sleeper manufacturers**

**Manufacturer of steel reinforced plastic pipe & tanks**

**One of two largest integrated suppliers of safety barrier products**

**2<sup>nd</sup> largest manufacturer of corrugated steel products & leader in large span engineered structures**

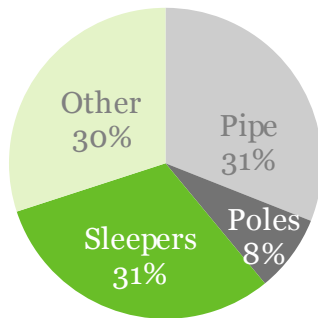
**18 manufacturing facilities**

**850+ people employed**



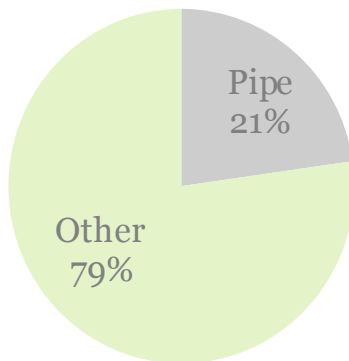
# Rocla Pipeline Products: Concrete Pipe and Products

**Sales tonnes FY11**



Source : Rocla Pipeline products

**Margin contribution FY11**



Source: Rocla Pipeline Products

**Pipe volumes increased 4% in FY 11**

**Pipe contribution to GM has improved & stabilised around 21-22%**

**Strategy to grow non-pipe products has delivered**

Sleepers

Water quality

Poles

Pipeline precast

Box culverts

Bridges

Safety barriers (ACP acq Sept 10)

Corrugated metal pipe (Atlantic acq Jan 12)

For personal use only



# Rocla Pipeline Products - Concrete Pipe and Products



**Despite tough markets in some Regions since acquisition EBIT growth has been good**

## **Growth focus**

Plastream plastic pipe facility established

Adelaide pipe site sold & relocating to new facility

Segmental Shaft technology secured

Atlantic Civil Products acquired

## **Regional outlook mixed**

NSW signs of housing recovery

Victoria forecast to decline

Queensland – volumes not declining but price pressure

WA steady



## Rocla Quarry Products - Overview



**An independent sand quarry operator with 17 quarries in NSW, Victoria, SA and WA**

**Products supplied includes:**

- Concrete sands
- Building and plaster sands
- Dried sands
- Silica sands (including glass sands)
- Fill sands

**Participant in a joint venture hard rock quarry in Queensland**

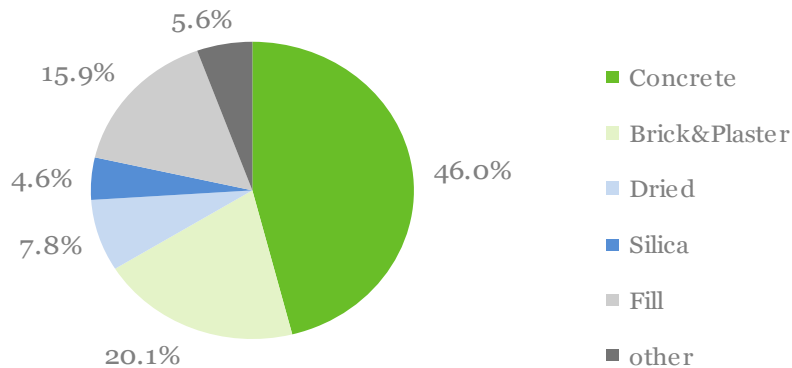
**Employs 160 people nationally**

For personal use only



# Rocla Quarry Products - Performance

Revenue by Segment FY11



## Forecast FY12

Sydney market remains flat

Housing flat and a drop in Non Residential

Drop in Fill sand as major developments have slowed

## Sydney Sand market a developing story

The Penrith Lakes operations will close FY2014

Advanced progress to upgrade Rocla's existing Calga quarry

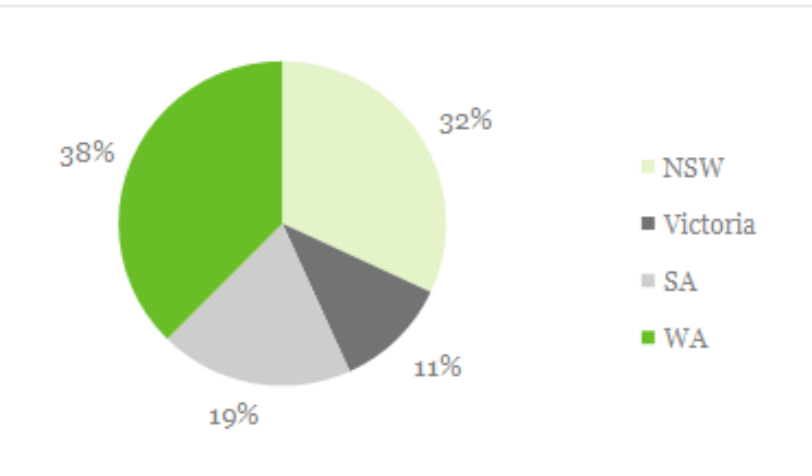
Commenced development of greenfield quarry at Green Valley





# Rocla Quarry Products - Performance

Revenue by State FY11



## Strong share position in most key markets

City	Rocla Share %
Sydney	25%
Melbourne	12%
Adelaide	33%
Perth	61%

Source: Rocla Quarry Products FY11 estimates

## States all in different parts of the cycle

## Key leverage is to a NSW upturn

Growth opportunities in Pilbara Region of WA from large Gas development and associated infrastructure projects at Onslow



## Key strategic issues

### Challenging Environment

Low volume environment, underutilised assets

Increasing competitive dynamic

### Concrete Division sources of competitive advantage

Capability – people, assets, technology

High degree of integration

Strategic positions and capacity

Scale and powerful brands

Strong industry relationships

**Strategies are focused on costs, utilising scale, asset productivity and growth**

For personal use only

