



ASX Announcement - Quarterly Report
Monday, 30th July, 2012

JUNE QUARTERLY REPORT

Highlights:

- Large Geochemical Gold Anomalies defined on the Company's Burkina Faso exploration licence ("Poya").
 - 5 Kilometres in strike and up to 800 metres in width
 - A number of large artisanal workings have been observed and mapped coincident with the gold anomalies.
 - Follow up sampling and mapping completed
- First pass soil sampling and geological evaluation completed over the Company's Cote d'Ivoire exploration licence applications.
 - A number of licence applications relinquished and nine new licenses applied for. Planning for first pass drill testing underway.
- Ongoing review of various exploration and development opportunities in West Africa.



POYA: Active Artisanal Workings

Fast Facts

Capital Structure

Shares on Issue 26 million

Market Cap @ 15c \$3.9 million

Cash on hand \$2.14 million
(as at 30 June 2012)

Corporate Directory

Tim Fry

Non Executive Chairman

Peter Pawlowitsch

Executive Director

Simon Coxhell

Technical Director

Ken Richards

Non Executive Director

Michel Mian

Non Executive Director

Eric Kinnan

Exploration Manager

Ian Hobson

Company Secretary

Company Highlights

West African Focused Gold Explorer.

Large prospective land holding.

Over 3800 km² of ground under application in Cote d'Ivoire.

POYA JV: 111km² in Burkina Faso.

Executive team is very experienced in gold exploration and operating in West Africa.

Contact Details

Principal Office

Level 1, 6 Thelma Street
West Perth WA 6005

Website

www.cruciblegold.com.au

Email

info@cruciblegold.com.au

Phone: +61 8 9486 8237

Fax: +61 8 9226 3764

ASX Code: CUG

ABN 64 089 145 424

For personal use only

ASX CODE: CUG



Receipt of assays from Geochemical Sampling Program at Poya: Burkina Faso

During the quarter gold analysis results were received from a total of 562 soil samples collected on a systematic 1000m X 200m grid pattern over the entire Poya licence area in Burkina Faso. The licence covers a sequence of intermediate to mafic volcanic rocks south of a granite pluton and ideally located with respect to potential structural pressure shadows and zones of dilation related to deformation of the Birimian Greenstone sequence.

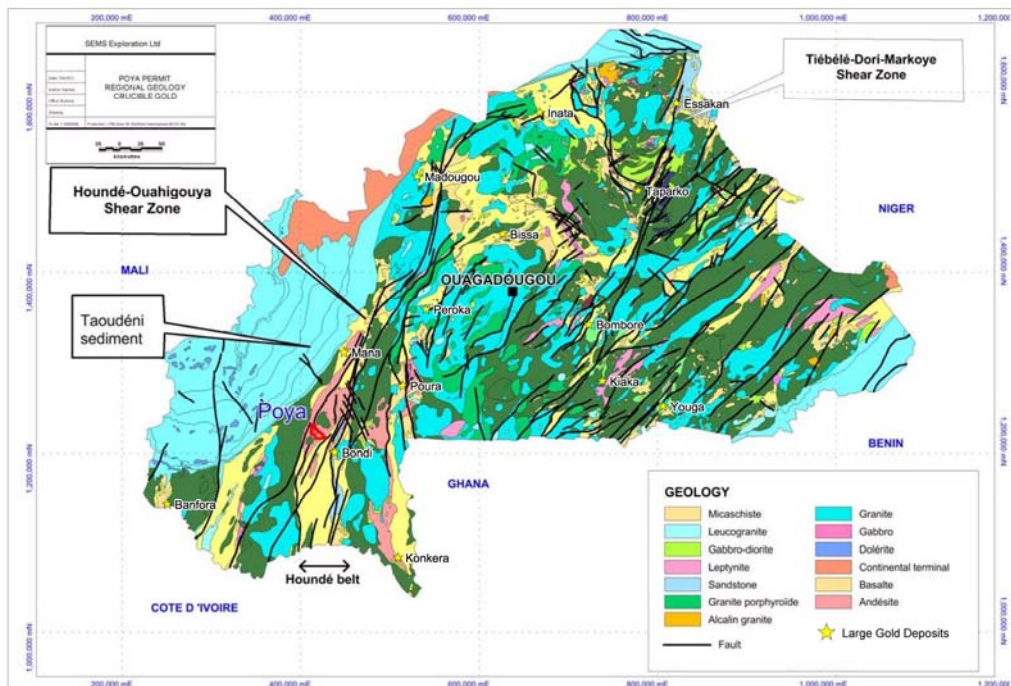


Figure 1. Simplified regional geological and structural map of Burkina Faso.

The samples were submitted to SGS laboratory in Ouagadougou for 2 kilogram bottle roll with AAS gold finish (1 ppb detection limit). A number of extensive artisanal workings were observed and mapped during the sampling work, where locals were observed mining quartz rich zones within an inter-bedded sequence of intermediate mafic rocks and thin siltstones and sediments. Both northeast and northwest trending quartz zones and shears/faults were present.

A large number of anomalous zones (+20 ppb Au) have been defined from the wide spaced gold results. In general the artisanal workings are defined by a plus 20 or 50 ppb gold contour and some of the anomalies associated with the known workings extend over 5 kilometres in strike length and greater than 600 metres in width.

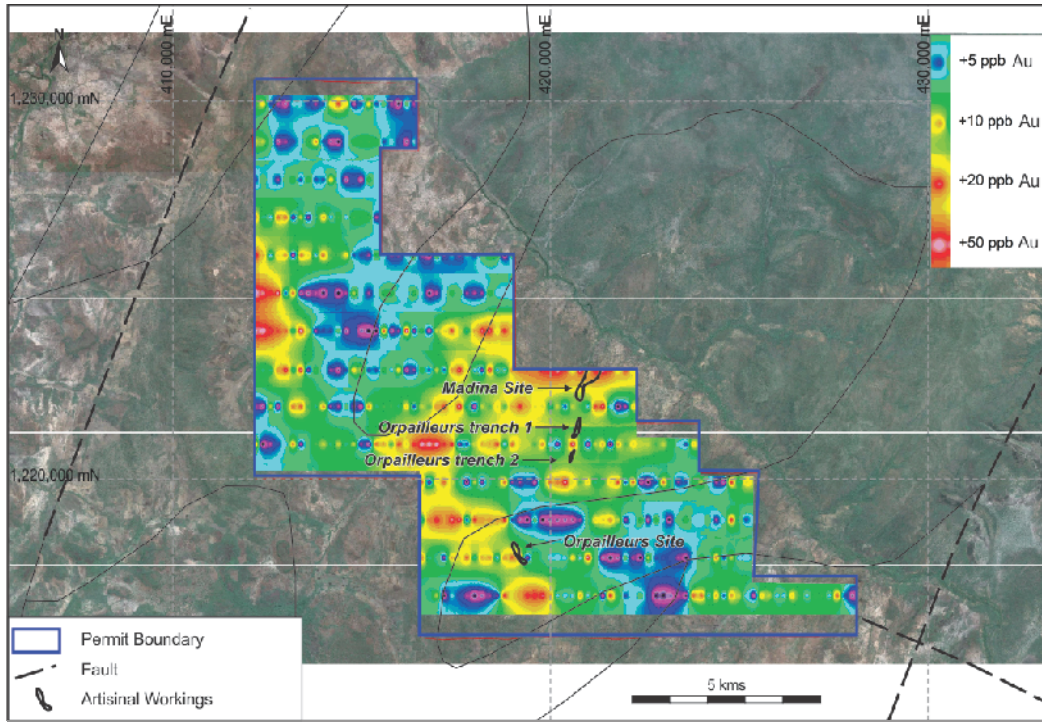


Figure 2. Imaged Gold Results: Poya

A follow up mapping and sampling program took place in early June with an additional 640 samples collected comprising detailed rock chip sampling and infill soil sampling. The results from this work will provide additional geochemical information to assist in the definition of drill targets. The gold mineralization at Poya is associated with narrow steeply dipping NE-NNE trending shear zones containing gold-bearing quartz veins. The main geochemical anomaly area is host to several major and currently active artisanal sites. Crucible Gold is planning for a drilling program immediately following the wet season.



Crucible Gold Geologists at Poya

For personal use only



Cote d'Ivoire Exploration

The Company had 8 large exploration licence applications located within the Birimian Greenstone sequence in Cote d'Ivoire considered prospective for gold mineralisation.

Since listing, the Company has completed GIS data interpretation incorporating aeromagnetics, mapped and interpreted geology and landsat review. A number of interesting areas were defined from this work and work programs designed to allow a first pass review and evaluation have been conducted. All tenement areas have been visited and sampling completed in numerous areas. Results returned from the sampling programs have allowed Crucible Gold to rationalise its tenement holdings with 3 of the 8 licence applications retained. Following granting the company will seek approval for drill testing of the more significant gold anomalies located.

During the quarter an additional nine licences covering 2,615 square kilometres were applied for. In conjunction with the retained licence applications, the Company now has a total of 12 licence applications covering 3,814 square kilometres in Cote d'Ivoire.

The Company understands that the government has started renewing existing licenses and once this is complete they will start processing new applications.

Conclusion

The infill sampling and mapping on Crucibles Burkina Faso Poya licence will allow drill targeting to proceed in the coming quarter and following cessation of the wet season, drilling can commence.

The rapid reconnaissance and sampling of the licence applications in Cote d'Ivoire over the last 6 months has allowed rationalisation of the tenement holding leading to only the most prospective tenements being retained. The additional 9 licences applied for lie in prospective areas adjacent or within major fault zones and proposed work programs to assess these are underway.

For personal use only

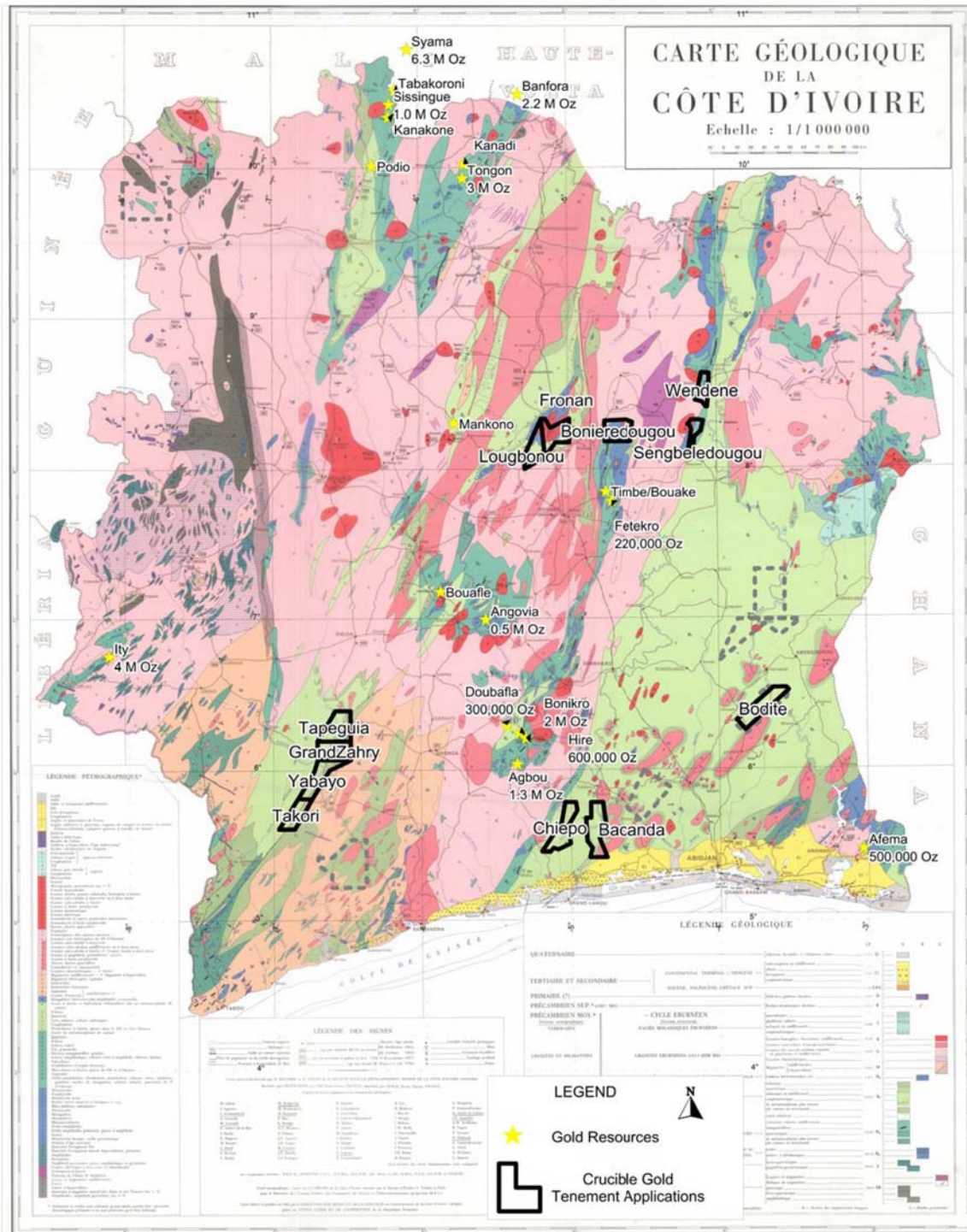


Figure 3: Crucible Gold; July 2012 Cote d' Ivoire Tenement Applications

Competent Person Statement

The comments regarding the exploration results, in this document, have been made by Simon Coxhell (Member Australasian Institute of Mining and Metallurgy), who is a consultant and director employed by Crucible Gold Ltd. Mr Coxhell has sufficient experience, relevant to the style of mineralisation and type of deposit under consideration and to the activity which he has undertaken to qualify as Competent Persons as defined in the 2004 Edition of the Australian Code for Reporting of Exploration Results, Mineral Resources and Ore Reserves (JORC Code).

For personal use only