

ASX Announcement – TENEMENT GRANTED-NORTHERN
GHANA: Tuesday 14th August, 2012

Highlights:

- A new licence acquired by Crucible Gold's 90% owned subsidiary Major Sun in northern Ghana.
- Licence covers 948 km² of sheared interpreted granitic and sedimentary units of the Birimian prospective sequence.
- Strong north easterly faults trending parallel to controlling structures in the Ashanti belt to the south.
- First pass geochemistry to commence following engagement with local communities.
- Exploration by Azumah and Castle Minerals to the southwest revealing new discoveries, highlighting the new areas prospectivity.

Fast Facts

Capital Structure

Shares on Issue 26 million

Market Cap @ 17c \$4.4 million

Cash on hand \$2.14 million
(as at 30 June 2012)

Corporate Directory

Tim Fry

Non Executive Chairman

Peter Pawlowitsch

Executive Director

Simon Coxhell

Technical Director

Ken Richards

Non Executive Director

Michel Mian

Non Executive Director

Eric Kinnan

Exploration Manager

Ian Hobson

Company Secretary

Company Highlights

West African Focused Gold Explorer.

Large prospective land holding.

Over 3800 km² of ground in Cote d'Ivoire,
subject to application.

111 km² of ground in Burkina Faso.

Executive team is very experienced in gold
exploration and operating in West Africa.

Contact Details

Principal Office

Level 1, 6 Thelma Street
West Perth WA 6005

Website

www.cruciblegold.com.au

Email

info@cruciblegold.com.au

Phone: +61 8 9486 8237

Fax: +61 8 9226 3764

ASX Code: CUG

ABN 64 089 145 424



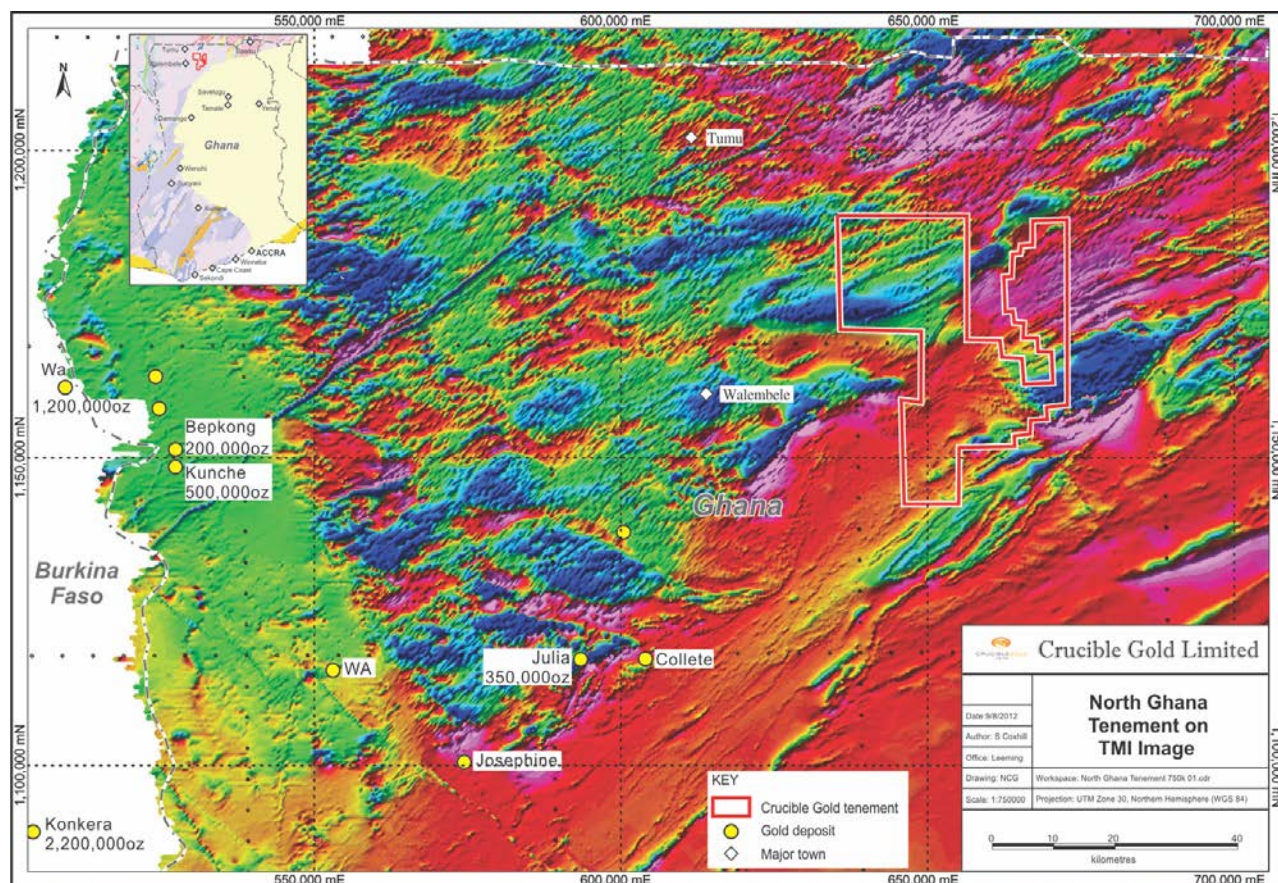
CRUCIBLEGOLD
LIMITED

NABULO PROJECT: Northern Ghana

Crucible Gold is pleased to announce that its Nabulo tenement located in northern Ghana has been granted.

The licence covers approximately 948 square kilometres of interpreted Birimian aged granitic and sedimentary rocks which have been extensively sheared and faulted by the regional controlling north easterly structures visible and interpreted on aeromagnetics over the area.

Exploration planning is well advanced. Once engagement with the local communities has been completed a first pass geochemical program will be undertaken. Limited exploration has taken place over the tenement area, however recent discoveries on the same mineralised belt located to the south west (Azumah and Castle Minerals) has highlighted the areas prospectivity. An initial soil and auger program is planned to assess the gold potential of the area.



Competent Person Statement

The comments regarding the geology, prospectivity and exploration results, in this document, have been made by Simon Coxhell (Member Australasian Institute of Mining and Metallurgy), who is a consultant and director employed by Crucible Gold Ltd. Mr Coxhell has sufficient experience, relevant to the style of mineralisation and type of deposit under consideration and to the activity which he has undertaken to qualify as Competent Persons as defined in the 2004 Edition of the Australian Code for Reporting of Exploration Results, Mineral Resources and Ore Reserves (JORC Code).