



Gold Symposium

October 2012

Les Davis - Managing Director

ASX: SLR

ABN: 38 108 779 782

www.silverlakeresources.com.au

Important Notice and Disclaimer



Silver Lake Resources Limited has prepared this presentation based on information available to it. No representation or warranty, express or implied, is made as to the fairness, accuracy, completeness or correctness of the information, opinions and conclusions contained in this presentation.

All dollar terms expressed in this presentation are in Australian dollars unless otherwise stated.

To the maximum extent permitted by law, none of Silver Lake Resources Limited, its directors, employees or agents, advisers, nor any other person accepts any liability, including, without limitation, any liability arising from fault or negligence on the part of any of them or any other person, for any loss arising from the use of this presentation or its contents or otherwise arising in connection with it.

This presentation is not an offer, invitation, solicitation or other recommendation with respect to the subscription for, purchase or sale of any security, and neither this presentation nor anything in it shall form the basis of any contract or commitment whatsoever. This presentation may contain forward looking statements that are subject to risk factors associated with gold exploration, mining and production businesses. It is believed that the expectations reflected in these statements are reasonable but they may be affected by a variety of variables and changes in underlying assumptions which could cause actual results or trends to differ materially, including but not limited to price fluctuations, actual demand, currency fluctuations, drilling and production results, reserve estimations, loss of market, industry competition, environmental risks, physical risks, legislative, fiscal and regulatory changes, economic and financial market conditions in various countries and regions, political risks, project delay or advancement, approvals and cost estimates.

The information in this presentation that relates to mineral resources, mineral reserves and exploration results are based on information compiled by Mr Christopher Banasik who is a Member of the Australasian Institute of Mining and Metallurgy. Any statement herein, direct or implied, as to a potential gold deposit is conceptual in nature and a reference to the targeted gold potential and not to any JORC compliant Mineral Resource. Mr Banasik is a full time employee of Silver Lake Resources Ltd, and has sufficient experience which is relevant to the style of mineralisation under consideration to qualify as a Competent Person as defined in the 2004 edition of the JORC Code. Mr Banasik has given his consent to the inclusion in this presentation of the matters based on the information in the form and context in which it appears.

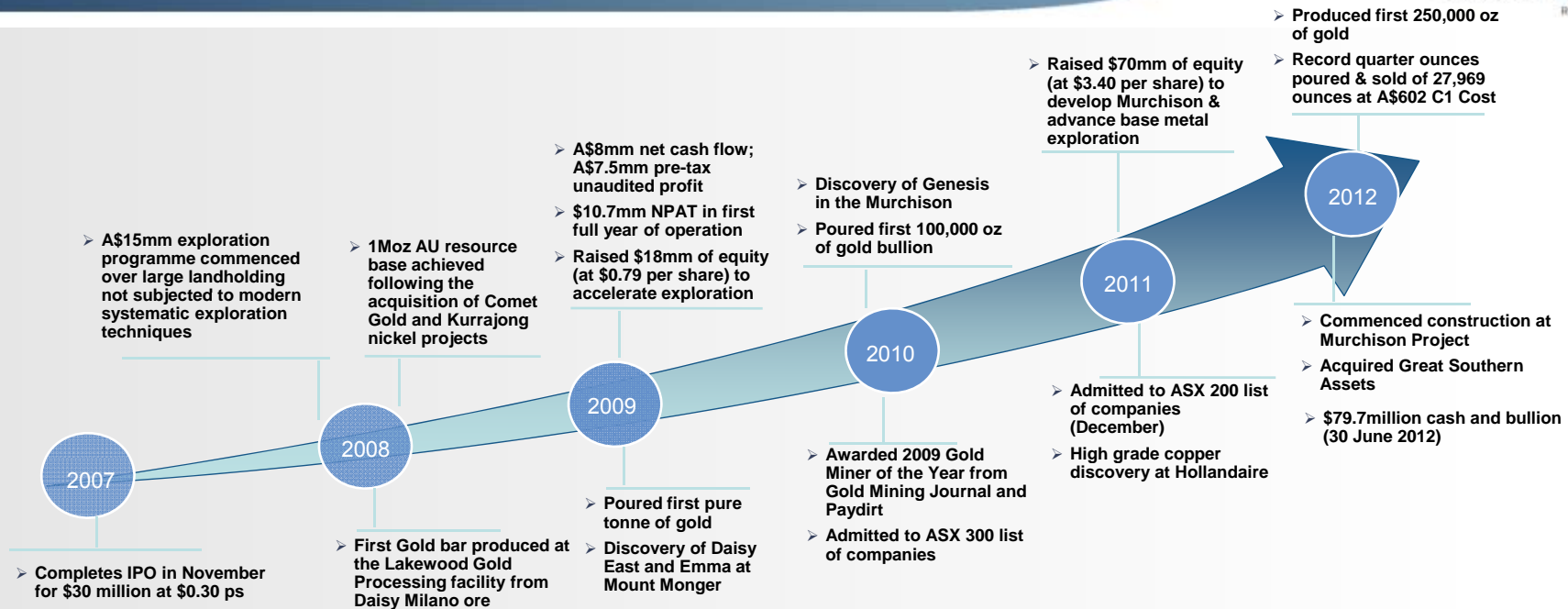
The information in this presentation that relates to exploration and production targets refers to targets that are conceptual in nature, where there has been insufficient exploration to define a Mineral Resource and it is uncertain if further exploration will result in the determination of a Mineral Resource.

The information on exploration targets in this presentation are based on a conceptual range of targets as follows:

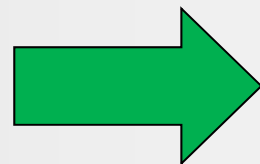
<i>Tonnage range:</i>	<i>50 million to 100 million tonnes</i>
<i>Grade range:</i>	<i>3 g/t Au to 8 g/t Au</i>
<i>Ounces:</i>	<i>5 million to 10 million</i>



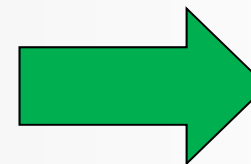
Company Performance & Key Milestones



	FY2009A
Number of Operating Mines	1
Life of Mine (years)	3
Market Capitalisation A\$M	\$108
Gold Production (koz)	47.3
Revenue A\$M	\$58.1
EBITDA A\$M	\$19.7
EBITDA Margin	34%
NPAT A\$M	\$10.7



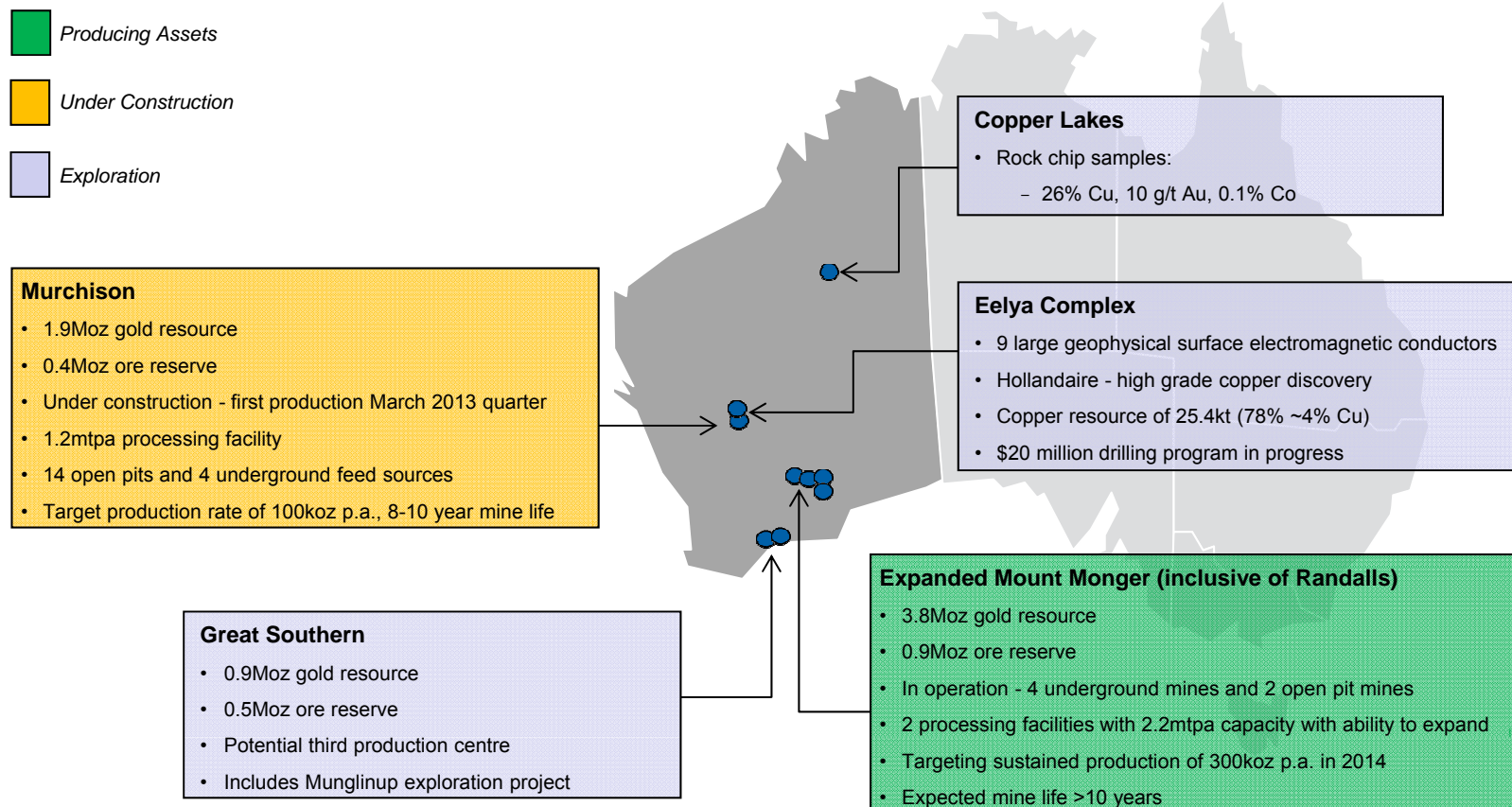
	FY2012E
Number of Operating Mines	5
Life of Mine (years)	~10
Market Capitalisation A\$M	\$700
Gold Production (koz)	83.4
Revenue A\$M	\$135.4
EBITDA A\$M	\$59.0
EBITDA Margin	44%
NPAT A\$M	\$31.2



6th August 2012:
SLR announces acquisition of IGR to create a 400,000 oz gold producer in 2014



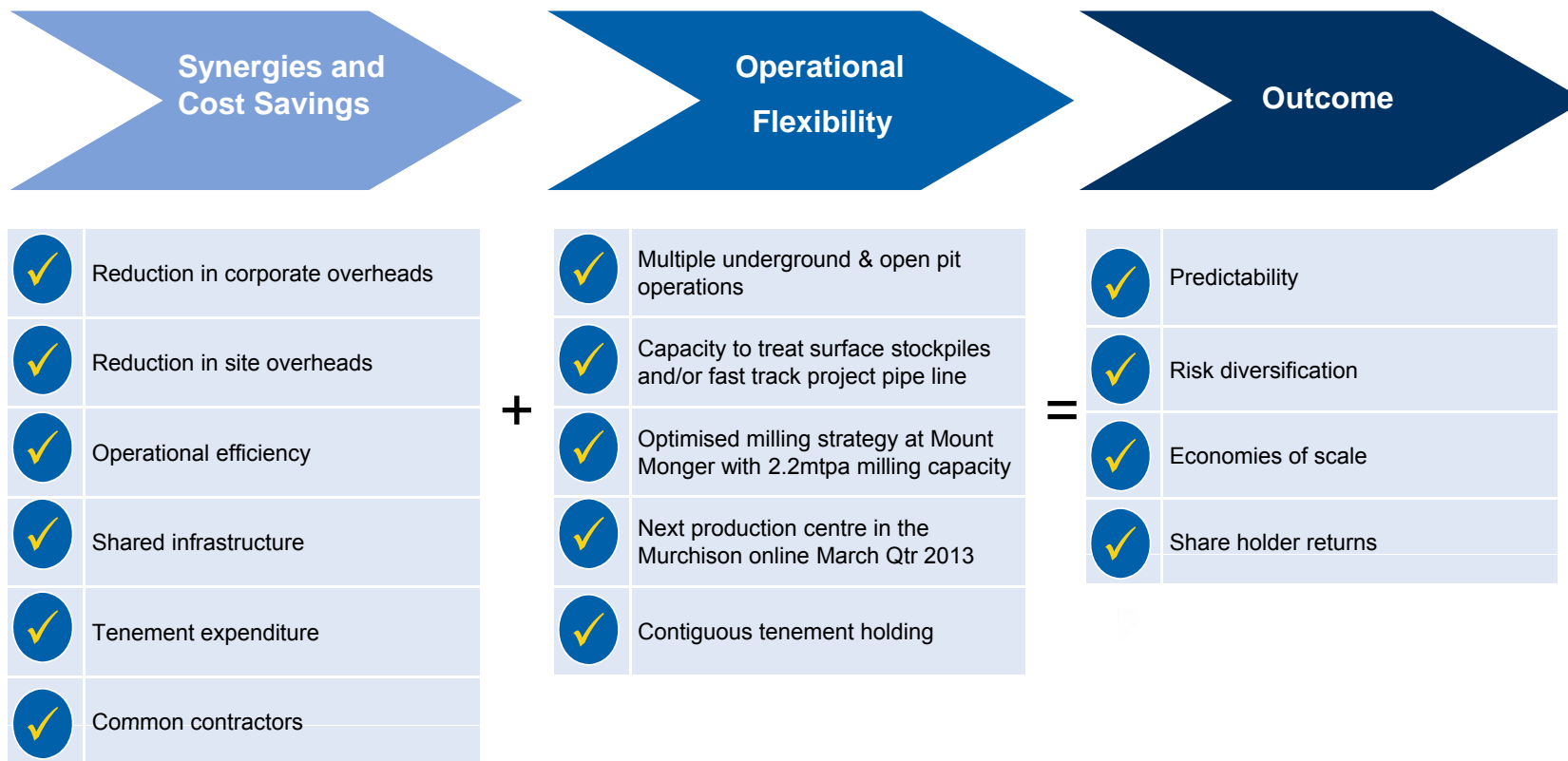
A Quality, Diversified, Western Australian Portfolio



1: Refer to appendix - JORC Resource & Reserve Inventory



The Value Add.... “1 + 1 = 3”



Key Metrics.... “1 + 1 = 3”



“The expanded Silver Lake becomes one of the largest all Australian gold producers”

Silver Lake		Integra		Expanded Silver Lake	
Production (including Murchison)	FY13: 155 - 195koz FY14: 300koz			Production	FY13: 255 - 295koz FY14: 400koz
Mill Capacity (including Murchison)	FY13: 2.2mtpa			Mill Capacity	FY13: 3.4mtpa
Resources	4.5Moz	+		Resources	6.6Moz
Reserves	1.3Moz		=	Reserves	1.8Moz
Land Holding	3,500sqkm			Land Holding	5,000sqkm



Company Overview - Pro-Forma



ASX Code: SLR

ASX 200 Index	December 2011
Ordinary Shares	375.6 million
Unlisted Options	3.4 million
Market Cap: A\$3.80 per share	A\$1,440 million
Range (12 month)	A\$2.02 - A\$3.96
Average Daily Volume	1.7M shares (\$6.5M)

Investor ¹	Shares (M)	%
Directors	25.5	6.8
Dynamic Funds	16.3	4.3
Macquarie Investment	14.4	3.8
Sprott Asset Management	13.4	3.5
NAB	11.7	3.1
Acorn Capital	10.1	2.7
Top 20 + Directors	166.1	45.0

Note: Fully Diluted Basis

Directors

Paul Chapman	Chairman
Les Davis	Managing Director
Chris Banasik	Director Exploration and Geology
David Griffiths	Non Executive Director
Peter Johnston	Non Executive Director
Brian Kennedy	Non Executive Director



Compelling Project Pipeline



Producing

Rosemary
Daisy East
Daisy Milano
Haoma
Stockpile
Maxwells OP

Development

Wombola Dam Big Pit
Murchison
Majestic
Cock Eyed Bob UG
Santa UG
Maxwells UG
Imperial

Advanced Exploration

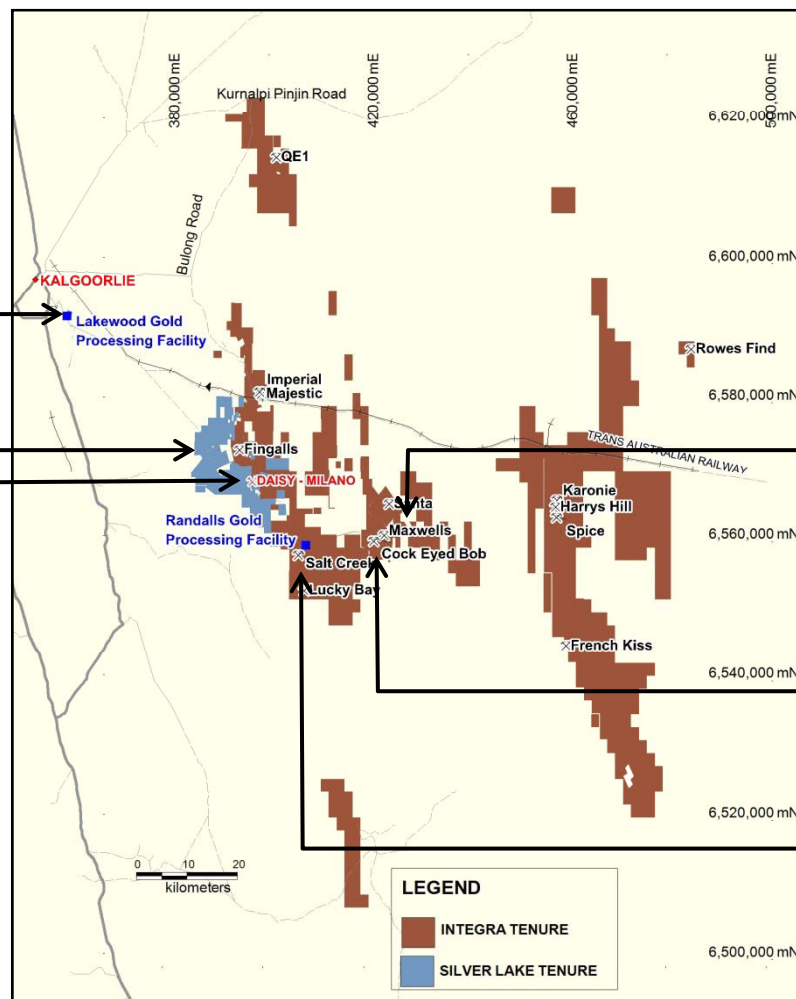
Great Southern
Magic
Hollandaire
Hammer & Tap
Fingalls
Santa Fly Camp
Harry's Hill

Greenfields Exploration

Comet East
Vostok
Mount Monger Other
Murchison Other
Lake Austin
Copper Lakes
Mt Eelya
Colonel
Randalls Other
Aldiss Other
Spice
French Kiss
QE1
Karonie
Peters Dam
Queen Lapage



Mount Monger Operations - Consolidated

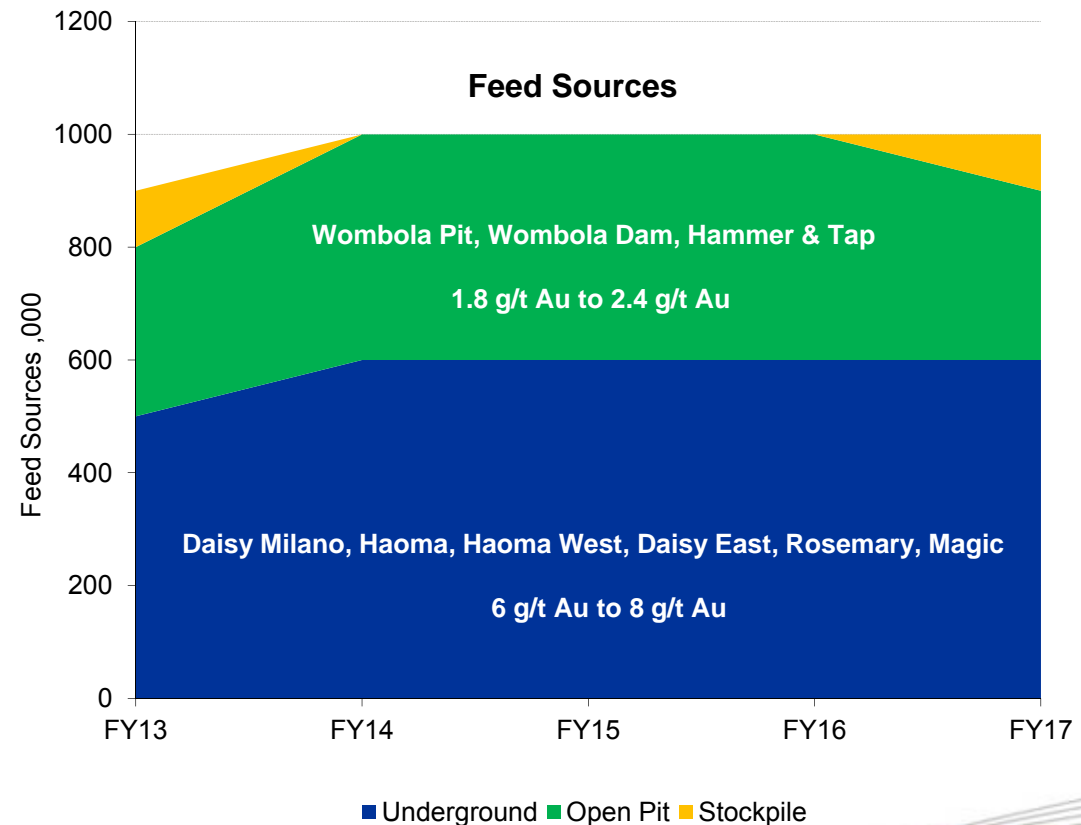


Mount Monger - SLR

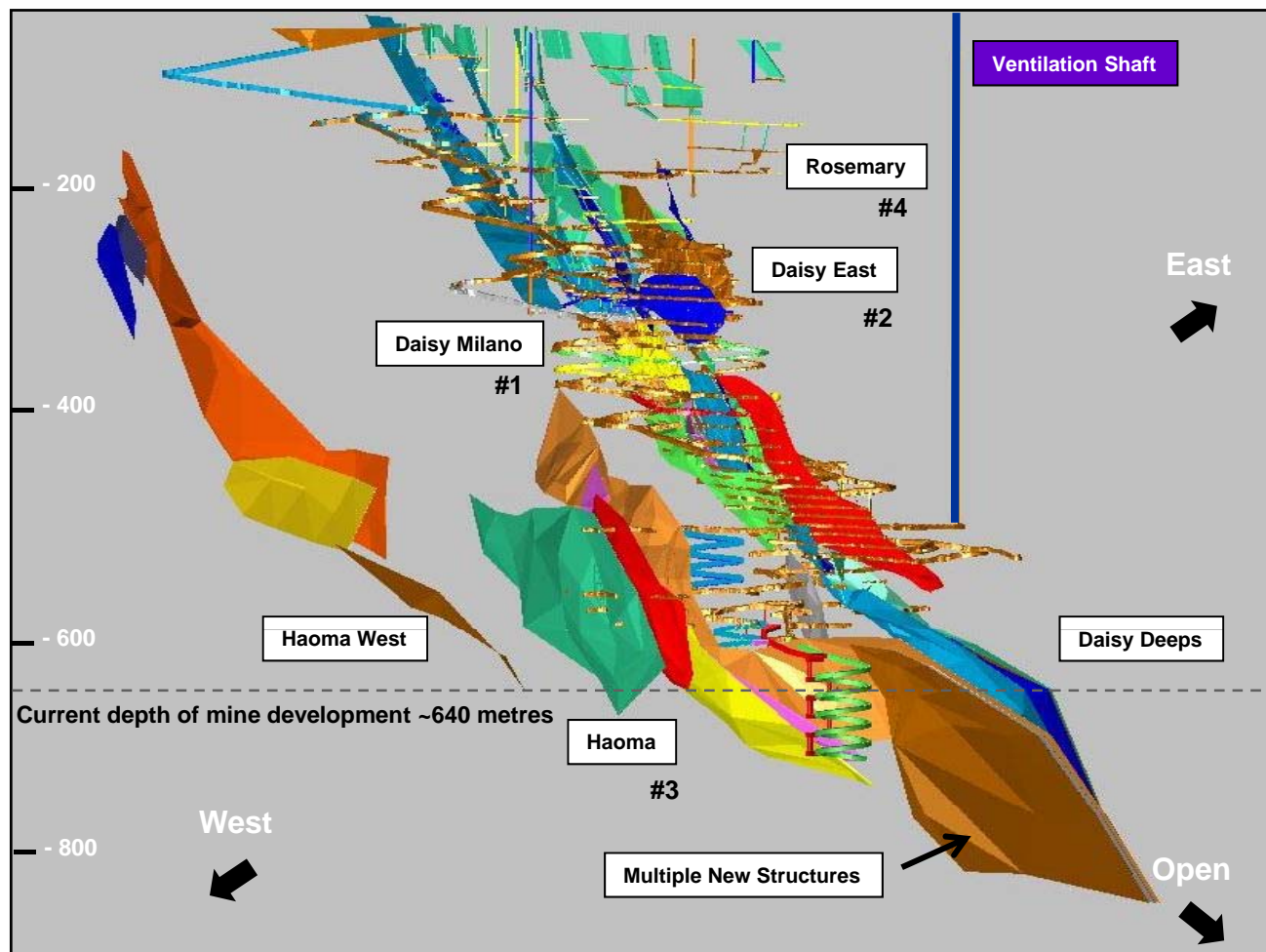


Location	50km SE of Kalgoorlie
Stage	In operation
Mining	4 underground mines 1 open pit mine
Processing	700,000 tpa (hard rock) 900,000 tpa (blended) Exp. to 1mtpa (blended)
Blended Feed Grade	FY13: 4.4 - 5.6 g/t Au
Blended Recovery	94%
Production	FY13: 120koz to 150koz
Resource¹	1.7Moz
Reserve¹	0.4Moz
Mine Life	~10 years
Av. C1 Cash Cost oz	A\$570 - A\$620
Av.Waste Development (Capital & Pre-Paid)	A\$25 million per annum
Sustaining Capital	A\$4 million per annum

1: Refer to appendix - JORC Resource & Reserve Inventory



4 Underground Mines - 1.3Moz of Resource



All accessible from same infrastructure containing 1.3Moz of resource

1. Daisy Milano
 2. Haoma
 3. Daisy East (remnant)
 4. Rosemary (initial)
- + Haoma West (new discovery)

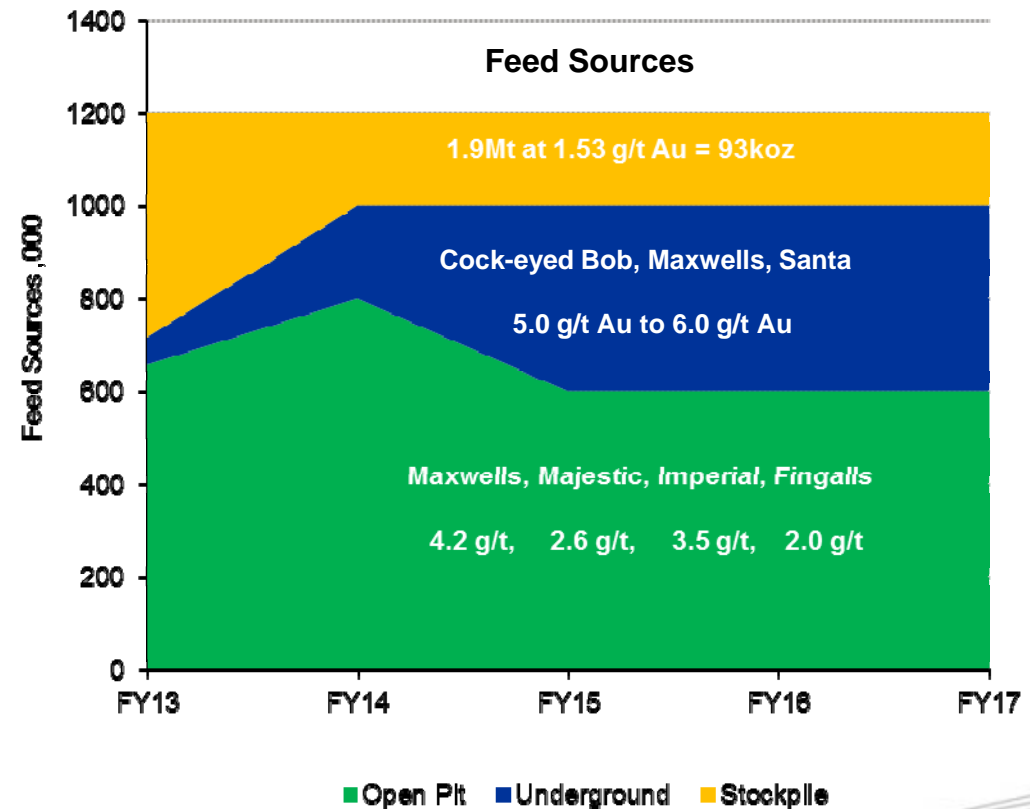
Endowment
2,000 to 3,000ovm



Mount Monger - IGR



Location	65km SE of Kalgoorlie
Stage	In operation
Mining	1 open pit mine 90koz surface stockpile
Processing	1.2mtpa Exp. to 1.7mtpa for \$20M (not committed as yet)
Blended Feed Grade	FY13: 2.5 - 3.3 g/t Au
Blended Recovery	96%
Production	FY13: 100koz
Resource ²	2.1Moz
Reserve ²	0.5Moz
Mine Life	~8 years
Av. C1 Cash Cost oz ¹	A\$850
Av. Waste Development (Capital & Pre-Paid)	Included in C1 for FY13



1: Excludes any planned SLR savings or Randalls mill expansion

2: Refer to appendix - JORC Resource & Reserve Inventory

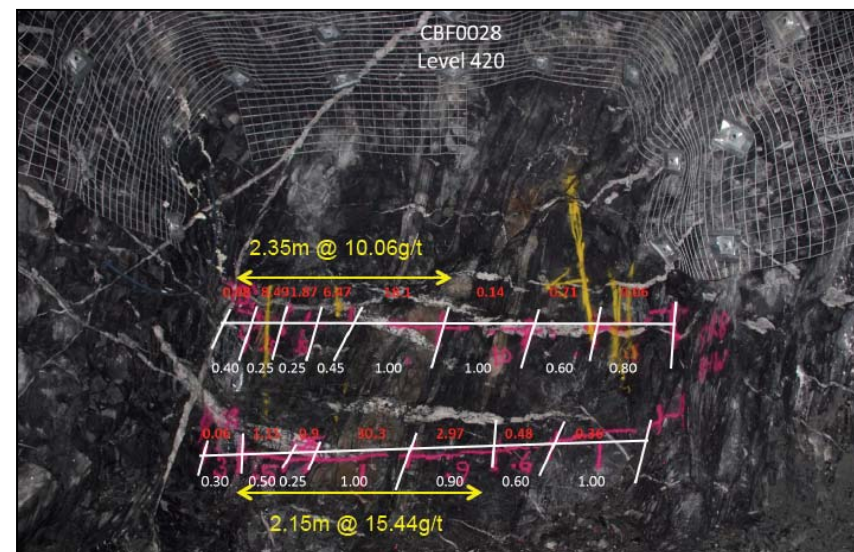


Mount Monger - IGR Underground



Underground Resources (using +3g/t Au cut off grade):

- Cock-eyed Bob: 111,500 oz at 5.6 g/t Au
- Maxwells: 291,100 oz at 5.8 g/t Au
- Santa: 178,100 oz at 5.7 g/t Au
- Total 580,700 oz at 5.7 g/t Au



Underground ore development face at CEB

- ~30km of strike in Banded Iron Formation (BIF)
- Very reactive host resulting in high grade gold mineralisation
- Only drilled to 400 metres depth
- Mineralisation remains open at depth

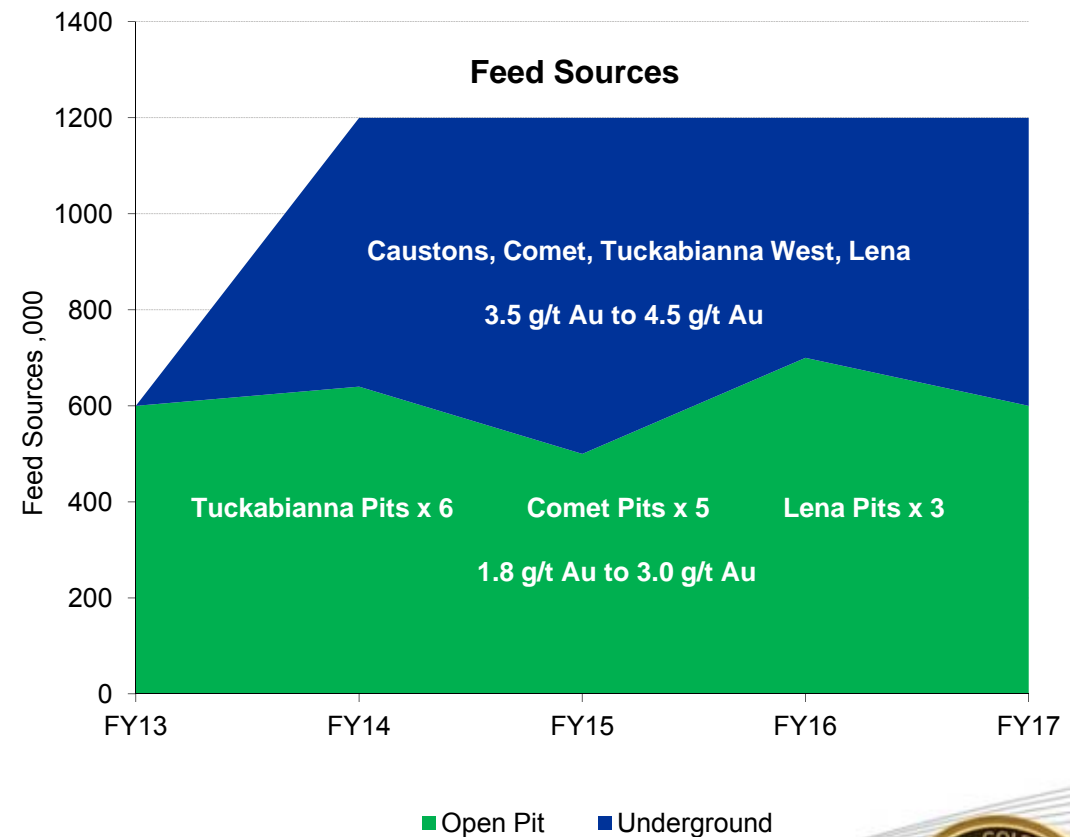


Murchison - Overview



Location	600km North of Perth
Stage	Under Construction
Pre-Production Capital	A\$65 - A\$70 million
First Gold Production	March 2013 Quarter
Mining - Planned Feed Sources	14 open pit mines 4 underground mines
Processing	1.2 mtpa
Blended Feed Grade	FY13: 2.0 - 2.4 g/t Au LOM: 2.8 - 3.4 g/t Au
Blended Recovery	92.7%
Production	FY13: 35koz to 45koz
Resource ¹	1.9Moz
Reserve ¹	0.45Moz
Mine Life	~8 to 10 years
Av. C1 Cash Cost oz	A\$720 - A\$770
Av. Waste Development (Capital & Pre-Paid)	A\$26 million per annum
Sustaining Capital	A\$4 million per annum

2 to 3 production sources at any given time



1: Refer to appendix - JORC Resource & Reserve Inventory



Murchison Project 75% Complete



Power Plant Construction



Crushing & Screening Plant



Fine Ore Bin Tunnel



Fine Ore Bin Construction



Murchison Project 75% Complete



Ball Mill Installed On Plinths



CIL Tank Construction



Tailings Dam Lift Under Construction



Blast Hole Drilling At Genesis Open Pit



Hollandaire Copper Discovery



- **Discovered September 2011**
- **Hollandaire deposit:**
 - copper grades up to 45%
 - gold grades up to 5.5 g/t
 - silver grades up to 256 g/t
- **Mineralisation open to the south west**
- **Current resource**
 - Supergene zone averages 4.7% grade



Drill core showing supergene chalcocite with copper grades up to 45%

Domain	Tonnes T	Cu %	Au g/t	Ag g/t	Inferred		
					Cu Metal Tonnes	Au Metal Ounces	Ag Metal Ounces
Oxide Au	220,000	0.1	1.1	3	300	7,900	19,400
Oxide Cu	280,000	0.9	0.1	2	2,600	600	17,700
Supergene	390,000	4.7	0.9	12	18,500	11,800	151,700
Primary	1,910,000	1.2	0.2	4	23,700	13,800	269,000
Total	2,800,000	1.6	0.4	5	45,100	34,100	457,800

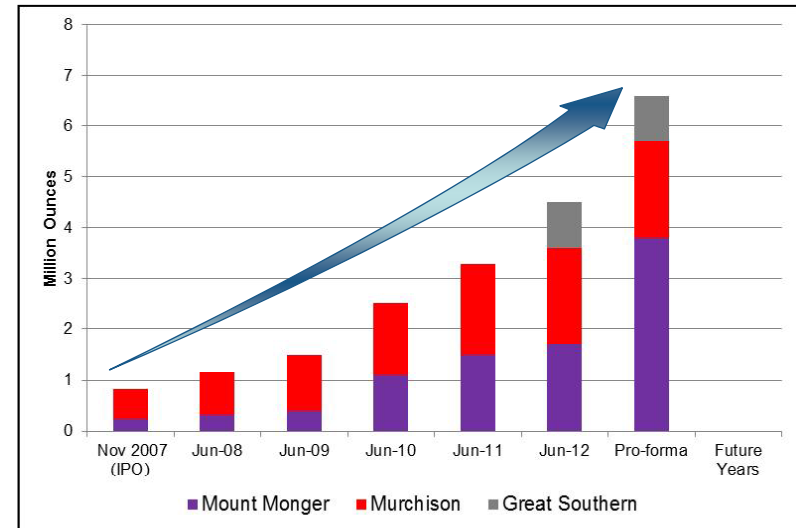
Hollandaire JORC resource as of September 2012



Exploration Plan



- **Mount Monger, Murchison & Great Southern:**
 - multiple drill rigs
 - infill, extensional & green fields
- **Objectives:**
 - **10Moz¹** Au target over time
- **Significant gold resource upside:**
 - highly prospective, underexplored tenement holding
 - results to date support this view
 - continue with \$18 million per annum programme
- **Advance base metal exploration at Eelya Complex:**
 - \$20 million exploration programme



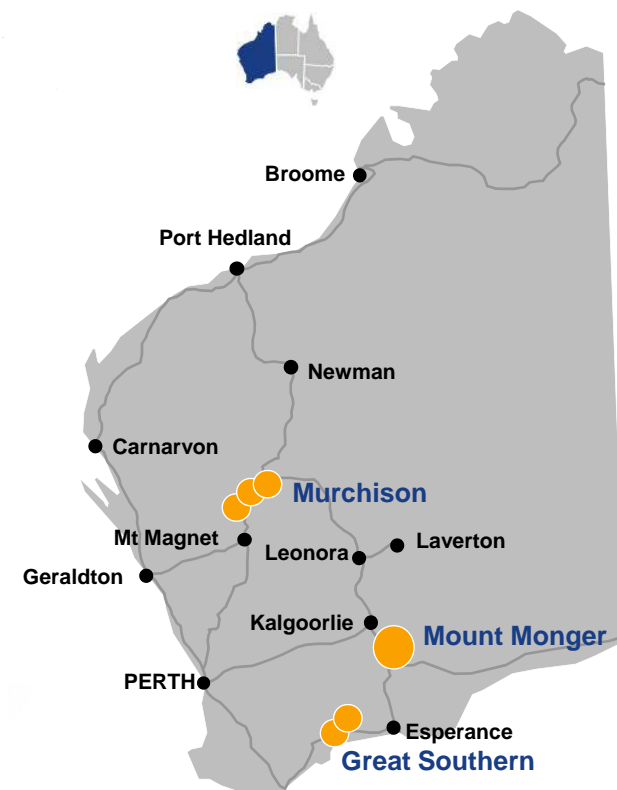
1. Refer to Appendix - JORC Resource & Reserve Inventory
2. Refer to disclaimer on slide 2



Why The Expanded Silver Lake Resources?



- **Growth profile to 400,000 oz and beyond:**
 - excludes expansion at Salt Creek Mill
 - excludes production from Great Southern
 - excludes gold production from Hollandaire
- **Risk diversification:**
 - multiple mines and mills
 - operational flexibility
 - complimentary skill sets
- **Financial:**
 - substantial cost savings delivered through clear synergies
 - increased cashflow to internally fund growth plans
 - robust profitable business
- **Large gold resource base with significant upside:**
 - 6.6Moz resource inclusive of 1.8Moz of reserves
 - highly prospective, underexplored tenement holding
 - continue with \$18 million per annum programme
- **Outcome**
 - one of the largest Australian gold producers
 - well positioned for further growth



1: Refer to appendix - JORC Resource & Reserve Inventory
2: Refer to slide 2 - Exploration Targets





Presentation Appendix

ASX: SLR

ABN: 38 108 779 782

www.silverlakeresources.com.au

Competent Person's Statement



Competent Person's Statement In Regard To Silver Lake's Ore Reserves & Mineral Resources:

The information in this report that relates to Exploration Results and Mineral Resources is based on information compiled by Mr Christopher Banasik who is a Member of the Australasian Institute of Mining and Metallurgy. Mr Banasik is a full time employee of Silver Lake Resources Ltd, and has sufficient experience which is relevant to the style of mineralisation under consideration to qualify as a Competent Person as defined in the 2004 edition of the JORC Code. Mr Banasik has given his consent to the inclusion in the report of the matters based on the information in the form and context in which it appears.

The information in this report that relates to Ore Reserves is based on information under the direction of Mr Christopher Banasik who is a Member of the Australasian Institute of Mining and Metallurgy. Mr Banasik is a full time employee of Silver Lake Resources Ltd, and has sufficient experience which is relevant to the style of mineralisation under consideration to qualify as a Competent Person as defined in the 2004 edition of the JORC Code. Mr Banasik has given his consent to the inclusion in the report of the matters based on the information in the form and context in which it appears.

Members of the Company's team preparing Ore Reserve Estimates under Mr Banasik's supervision all qualify as competent persons.

Competent Person's Statement In Regard To Integra's Ore Reserves & Mineral Resources:

Information in this announcement that relates to Exploration Results, Mineral Resources and Ore Reserves is based on information reviewed by Chris Cairns, Managing Director who has sufficient experience which is relevant to the style of mineralisation and type of deposit under consideration and to the activity which he is undertaking to qualify as a Competent Person as defined in the 2004 Edition of the "Australasian Code for Reporting of Exploration Results, Mineral Resources and Ore Reserves". Chris Cairns is a member of The Australasian Institute of Geoscientists and consents to the inclusion in the report of the matters based on the information in the form and context in which it appears.

Information in this announcement that relates to Mineral Resources and Ore Reserves has been compiled by Terry Brown, General Manager Project Development - Integra Mining, who has sufficient experience relevant to the style of mineralisation and type of deposit under consideration and to the activity which he is undertaking to qualify as a Competent Person as defined in the 2004 Edition of the "Australasian Code for Reporting of Exploration Results, Mineral Resources and Ore Reserves". Terry Brown is a Member of the Australasian Institute of Mining and Metallurgy and consents to the inclusion in the report of the matters based on his information in the form and context in which it appears.



Pro forma Combined Entity Gold Resources & Ore Reserves



Deposit	Measured Resources			Indicated Resources			Inferred Resources			Total Resources		
	Ore t '000s	Grade g/t Au	Total Oz Au '000s	Ore t '000s	Grade g/t Au	Total Oz Au '000s	Ore t '000s	Grade g/t Au	Total Oz Au '000s	Ore t '000s	Grade g/t Au	Total Oz Au '000s
Total Mount Monger	3,371.5	4.3	466.6	21,528.3	3.2	2,191.3	9,093.3	3.8	1,098.9	33,993.1	3.4	3,756.8
Hollandaire	-	-	-	-	-	-	1,100.0	0.5	18.0	1,100.0	0.5	18.0
Total Murchison	36.0	0.6	0.7	8,474.0	3.2	879.0	11,960.0	2.7	1,028.0	20,470.0	2.9	1,907.7
Total Great Southern	310.0	2.4	23.9	10,140.0	1.9	617.7	4,730.0	2.0	311.7	15,180.0	2.0	952.3
Total	3,717.5	4.1	491.2	40,142.3	2.9	3,688.0	25,783.3	2.9	2,438.6	69,643.1	3.0	6,616.8

	Proved Reserves			Probable Reserves			Total Reserves		
	Ore tonnes '000s	Grade	Total '000s	Ore tonnes '000s	Grade	Total '000s	Ore tonnes '000s	Grade	Total '000s
Mount Monger	2,415.7	1.7	129.6	7,564.4	3.3	793.4	9,980.1	2.9	923.0
Murchison	77.0	1.0	2.5	4,871.3	2.7	424.8	4,948.3	2.7	427.3
Great Southern	310.0	2.2	22.0	7,130.0	1.8	420.1	7,440.0	1.8	442.1
Total Ore Reserve	2,802.7	1.7	154.1	19,565.7	2.6	1,638.3	22,368.4	2.5	1,792.4

As at June 2012
Gold resources are inclusive of ore reserves



Integra's Gold Reserves



Deposit	JORC Category	Tonnes (t) *	Gold (g/t)	Contained Gold (oz) Integra Share	Integra Share (%)
Salt Creek	<i>Proved (stockpiles)</i>	1,578,000	1.42	72,040	100%
	<i>Probable</i>	536,000	2.17	37,340	
	Total	2,114,000	1.61	109,390	
Maxwells	<i>Proved (stockpiles)</i>	290,000	1.99	18,550	100%
	<i>Probable</i>	835,000	4.31	115,710	
	Total	1,125,000	3.71	134,260	
Santa Area	<i>Proved</i>	0	0.00	0	100%
	<i>Probable</i>	1,567,000	1.71	86,180	
	Total	1,567,000	1.71	86,180	
Majestic	<i>Proved</i>	0	0.00	0	85%
	<i>Probable</i>	999,600	2.44	78,420	
	Total	999,600	2.44	78,420	
Lucky Bay	<i>Proved</i>	0	0.00	0	100%
	<i>Probable</i>	123,000	4.85	19,180	
	Total	123,000	4.85	19,180	
Harrys Hill	<i>Proved</i>	0	0.00	0	100%
	<i>Probable</i>	1,135,000	2.37	86,480	
	Total	1,135,000	2.37	86,480	
Total	<i>Proved</i>	1,868,000	1.51	90,590	
	<i>Probable</i>	5,196,000	2.53	423,310	
	Total	7,064,000	2.26	513,900	

As at June 2012

Slide 23



Silver Lake's Gold Reserves



	Proved Reserves				Probable Reserves				Total Reserves			
	Ore tonnes '000s	Grade	Increment	Total '000s	Ore tonnes '000s	Grade	Increment	Total '000s	Ore tonnes '000s	Grade	Increment	Total '000s
Daisy Milano	-	-		-	1,231.7	5.6	g/t Au	219.7	1231.7	5.6	g/t Au	219.7
Haoma	-	-		-	792.1	5.1	g/t Au	130.7	792.1	5.1	g/t Au	130.7
Wombola	222.8	1.6	g/t Au	11.3	344.6	1.8	g/t Au	19.7	567.4	1.7	g/t Au	31.0
Mt Monger Stockpile	324.9	2.6	g/t Au	27.7					324.9	2.6	g/t Au	27.7
Murchison Project					4,871.3	2.7	g/t Au	424.8	4,871.3	2.7	g/t Au	424.8
Murchison Stockpile	77.0	1.0	g/t Au	2.5					77.0	1.0	g/t Au	2.5
Kundip Project	-	-	g/t Au	-	2,810.0	3.4	g/t Au	307.2	2,810.0	3.4	g/t Au	307.2
Trilogy Project	310.0	2.2	g/t Au	22.0	4,320.0	0.8	g/t Au	112.9	4,630.0	0.9	g/t Au	134.9
Total Reserve	934.7	2.2	g/t Au	63.5	14,369.7	2.6	g/t Au	1,215.0	15,304.4	2.6	g/t Au	1,278.5

As at June 2012

Slide 24



Integra's Gold Resources



	JORC Category	Tonnes (t)	Gold (g/t)	Contained Gold (oz) Integra Share
Total Resource Including Reserves	<i>Measured</i>	2,242,000	1.36	98,000
	<i>Indicated</i>	18,825,000	2.45	1,482,000
	<i>Inferred</i>	5,780,000	2.56	475,000
	<i>Total</i>	26,847,000	2.38	2,055,000

As at June 2012
Gold resources are inclusive of ore reserves



Silver Lake's Gold Resources



Deposit	Measured Resources			Indicated Resources			Inferred Resources			Total Resources		
	Ore t '000s	Grade g/t Au	Total Oz Au '000s	Ore t '000s	Grade g/t Au	Total Oz Au '000s	Ore t '000s	Grade g/t Au	Total Oz Au '000s	Ore t '000s	Grade g/t Au	Total Oz Au '000s
Total Mount Monger	1,129.5	10.2	368.6	2,703.3	8.2	709.3	3,313.3	5.9	623.9	7,146.2	7.4	1,702.1
Murchison - OP	36.0	0.6	0.7	7,334.0	2.2	526.8	6,090.0	2.0	380.0	13,460.0	2.1	907.5
Murchison - UG	-	-	-	2,490.0	4.3	350.0	4,770.0	4.0	630.0	7,260.0	4.1	980.0
Hollandaire	-	-	-	-	-	-	2,800.0	0.4	34.1	2,800.0	0.4	34.1
Total Murchison	36.0	0.6	0.7	9,814.0	2.8	879.3	13,660.0	2.4	1,044.1	23,520.0	2.8	1,921.6
Total Great Southern	310.0	2.4	23.9	10,140.0	1.9	617.7	4,730.0	2.0	311.7	15,180.0	2.0	952.3
Total Silver Lake	1,475.5	8.3	393.2	22,657.3	3.0	2,206.3	21,703.3	2.8	1,979.7	45,846.2	3.1	4,576.0

As at June 2012
Gold resources are inclusive of ore reserves



SLR JORC Base Metal Resource



	Measured Resources					Indicated Resources					Inferred Resources					Total Resources				
	Ore tonnes '000s	Grade	Increment	Total '000s	Unit	Ore tonnes '000s	Grade	Increment	Total '000s	Unit	Ore tonnes '000s	Grade	Increment	Total '000s	Unit	Ore tonnes '000s	Grade	Increment	Total '000s	Unit
Kundip Project																				
Silver	-	-	g/t Ag	-	oz	4,390.0	2.5	g/t Ag	353.9	oz	4,550.0	2.1	g/t Ag	314.2	oz	8,940.0	2.3	g/t Ag	668.1	oz
Copper	-	-	% Cu	-	t	4,390.0	0.4	% Cu	15.6	t	4,550.0	0.3	% Cu	14.7	t	8,940.0	0.3	% Cu	30.2	t
Trilogy Project																				
Silver	310.0	41.2	g/t Ag	406.6	oz	5,750.0	48.0	g/t Ag	8,859.6	oz	180.0	12.0	g/t Ag	73.4	oz	6,240.0	47.0	g/t Ag	9,339.7	oz
Copper	310.0	0.3	% Cu	0.9	t	5,750.0	1.1	% Cu	62.3	t	180.0	0.8	% Cu	1.4	t	6,240.0	1.0	% Cu	64.6	t
Hollandaire																				
Silver	-	-	-	-	oz	-	-	-	-	oz	2,800.0	5.0	g/t Ag	457.8	oz	2,800.0	5.0	g/t Ag	457.8	oz
Copper	-	-	-	-	t	-	-	-	-	t	2,800.0	1.6	% Cu	45.1	t	2,800.0	1.6	% Cu	45.1	t
Total Resource																				
Silver	310.0	40.8	g/t Ag	406.6	oz	10,140.0	28.3	g/t Ag	9,213.5	oz	4,730.0	2.5	g/t Ag	386.6	oz	17,980.0	18.1	g/t Ag	10,465.5	oz
Copper	310.0	0.3	% Cu	0.9	t	10,140.0	0.8	% Cu	77.8	t	7,530.0	0.8	% Cu	61.2	t	17,980.0	0.8	% Cu	140.0	t

As at June 2012

Slide 27

