



CRUCIBLEGOLD
LIMITED

ASX Announcement - Quarterly Report
Monday, 21st January, 2013

DECEMBER QUARTERLY REPORT

Highlights:

Poya: Burkina Faso

- South African based contractor scheduled to commence an airborne magnetic survey on the Company's Burkina Faso exploration licence ("Poya"). The survey will be used to assist in the geological interpretation and understanding of the large geochemical gold anomalies confirmed and defined during the last quarter.
- The geochemical anomaly covers
 - 5 kilometres in strike and up to 800 metres in width
 - Rock chip values of up to 14.28 g/t returned from quartz veining adjacent to artisanal workings
 - A number of large artisanal workings have been observed and mapped coincident with the gold anomalies.
 - Follow up sampling and mapping confirms previous results

Ghana

- Community consultation completed on the company's licence in northern Ghana. Additional community meetings with representatives of the Nabuga-Jang, Dolibizon and Yigantu communities took place in early January 2013 where the company was well received and supported for future exploration activities in the area. The licence covers 948 km² of sheared interpreted granitic and sedimentary units of the Birimian prospective sequence. Work can now commence with the full support of the local surrounding communities.

Cote d'Ivoire

- The Company continues to wait for its exploration licence applications to be granted and continue to review other opportunities.

Fast Facts

Capital Structure

Shares on Issue 26 million

Market Cap @ 15c \$3.9 million

Cash on hand \$1.36 million
(as at 31 Dec 2012)

Corporate Directory

Tim Fry

Non Executive Chairman

Peter Pawlowitsch

Non Executive Director

Simon Coxhell

Technical Director

Ken Richards

Non Executive Director

Michel Mian

Non Executive Director

Ian Hobson

Company Secretary

Company Highlights

West African Focused Gold Explorer.

Large prospective land holding.

Over 2866 km² of ground under application
in Cote d'Ivoire.

POYA JV: 111km² in Burkina Faso.

Executive team is very experienced in gold
exploration and operating in West Africa.

Contact Details

Principal Office

Level 1, 6 Thelma Street
West Perth WA 6005

Website

www.cruciblegold.com.au

Email

info@cruciblegold.com.au

Phone: +61 8 9486 8237

Fax: +61 8 9226 3764

ASX Code: CUG

ABN: 64 089 145 424



Commencement of Airborne Aeromagnetic Survey at Poya: Burkina Faso

Xcalibur Airborne Geophysics are scheduled to complete a detailed airborne aeromagnetic survey over the Poya exploration licence in late January 2013. The survey will assist in the geological understanding of the licence and provide gold targeting information.

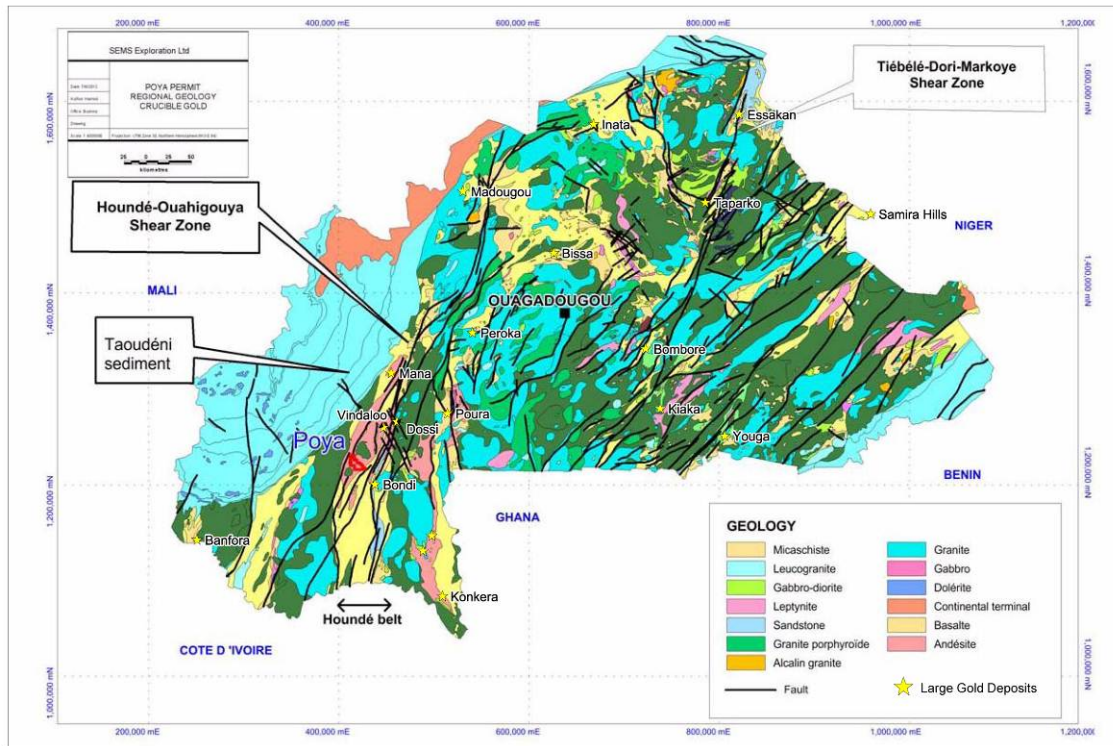


Figure 1. Simplified regional geological and structural map of Burkina Faso.

Sampling work completed by Crucible Gold has outlined a number of cohesive +20 ppb gold anomalies extending over several kilometres in length.

The mapping completed has revealed a sequence of variably sheared pyroclastics and andesitic lavas overlain in areas by ferricrete/transported laterite. A number of north to north east trending creeks mask portions of the underlying bedrock and appear to follow geophysical trends interpreted as shears and faults. The artisanal workings throughout the tenement have been focused on narrow quartz veins and shears which dominantly trend in a north and north east trending orientation. Subsidiary north west trending quartz veins are also present. Silicification and fine disseminated pyrite accompanies the quartz veins. The rock chip samples collected range in values from below detection to a maximum of 14.48 g/t Au. All of the anomalous results have been located within or adjacent to the artisanal workings with the presence of the ferricrete preventing sampling of the underlying bedrock in many areas.



CRUCIBLEGOLD
LIMITED

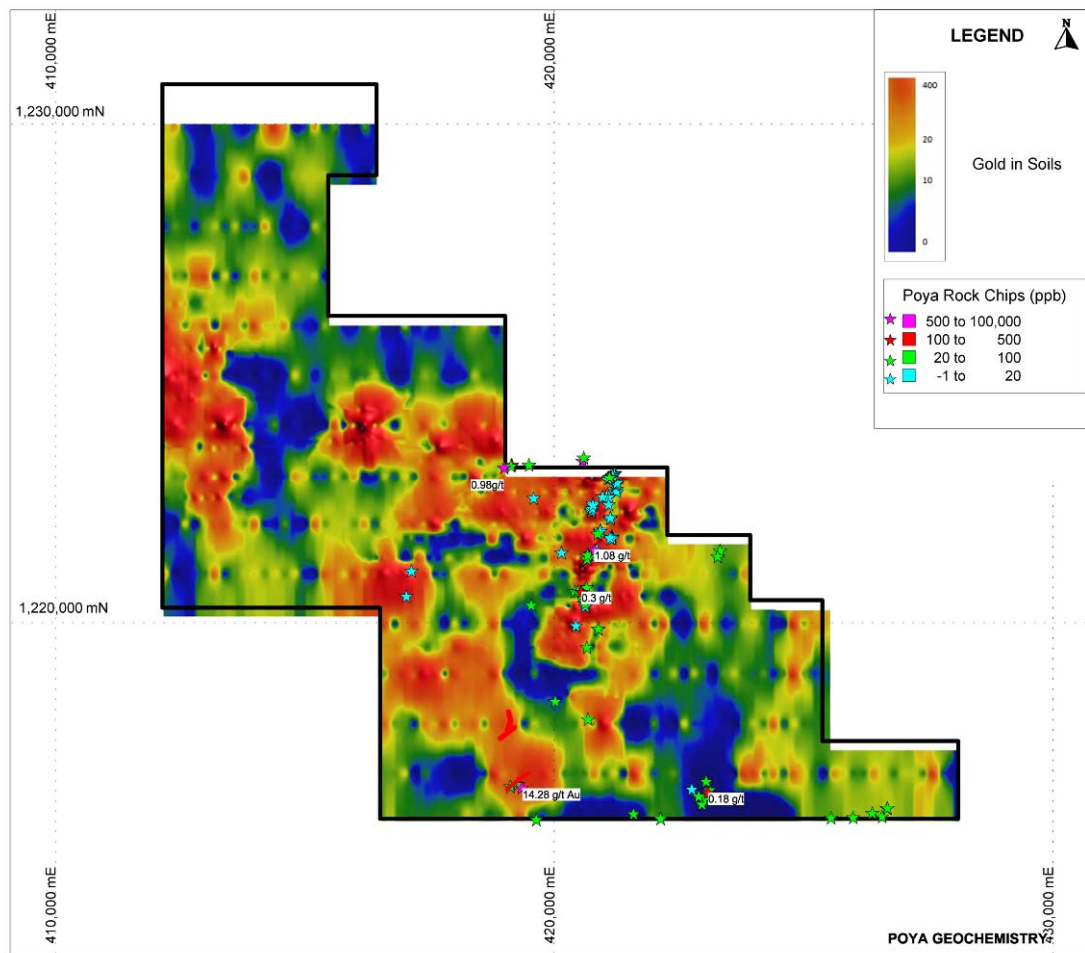


Figure 2. Imaged Soil Gold Geochemistry and Rockchips

Nabulo Project: Northern Ghana

Crucible Gold's Nabulo tenement located in northern Ghana was granted in August 2012. The licence covers approximately 948 square kilometres of interpreted Birimian aged granitic and sedimentary rocks which have been extensively sheared and faulted by the regional controlling north easterly structures visible and interpreted on aeromagnetics over the area.

Engagement with the local communities has been completed. Limited exploration has taken place over the tenement area, however recent discoveries on the same mineralised belt located to the south west (Azumah and Castle Minerals) has highlighted the areas prospectivity. Exploration planning is underway.



CRUCIBLEGOLD
LIMITED

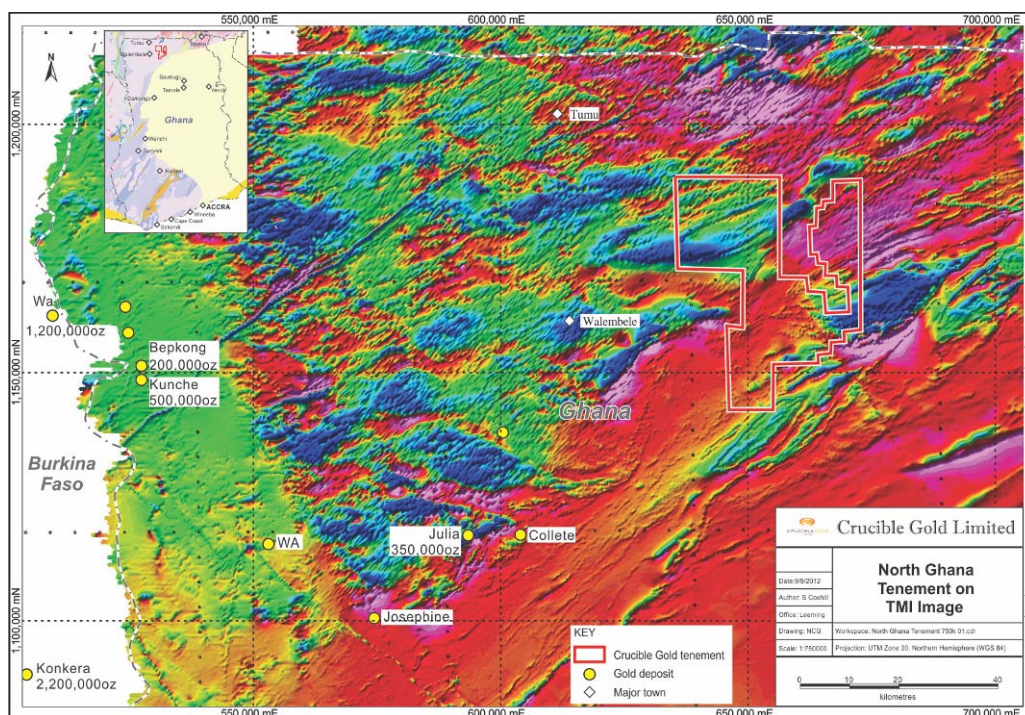


Figure 3. Nabulo Tenement on Regional Magnetics

Cote d'Ivoire Exploration

Crucible Gold awaits the grant of its licences in Cote d'Ivoire prior to commencing more detailed and focused exploration activities. In addition Crucible Gold continues to assess other opportunities in Cote d'Ivoire.

Competent Person Statement

The comments regarding the exploration results, in this document, have been made by Simon Coxhell (Member Australasian Institute of Mining and Metallurgy), who is a consultant and director employed by Crucible Gold Ltd. Mr Coxhell has sufficient experience, relevant to the style of mineralisation and type of deposit under consideration and to the activity which he has undertaken to qualify as Competent Persons as defined in the 2004 Edition of the Australian Code for Reporting of Exploration Results, Mineral Resources and Ore Reserves (JORC Code). Mr Coxhell consents to the inclusion in the report of the matters based on his information in the form and context in which it appears.