



# Modun Resources Investor Presentation

June 2013

Modun Resources Limited ABN 95 066 139 991

ASX: MOU

# Disclaimer and Competent Persons Statement



## Disclaimer

Certain statements made during or in connection with this communication, including without limitation, those concerning the economic outlook for the coal mining industry, expectations regarding coal prices, production, cash costs and to the operating results, growth prospects and the outlook of Modun Resources Ltd's ("Modun") operations including the likely commencement of commercial operations of the Projects and its liquidity and capital resources and expenditure, contain or comprise certain forward-looking statements regarding Modun's exploration operations, economic performance and financial condition. Although Modun believes that the expectations reflected in such forward-looking statements are reasonable, no assurance can be given that such expectations will prove to have been correct. Accordingly, results could differ materially from those set out in the forward-looking statements as a result of, among other factors, changes in economic and market conditions, success of business and operating initiatives, changes in the regulatory environment and other government actions, fluctuations in coal prices and exchange rates and business and operational risk management. Modun undertakes no obligation to update publicly or release any revisions to these forward-looking statements to reflect events or circumstances after today's date or to reflect the occurrence of unanticipated events.

### **Not an offer of securities or financial product advice**

This presentation does not constitute an offer, invitation or recommendation to subscribe for or purchase any security in Modun and neither this presentation nor anything contained in it shall form the basis of any contract or commitment.

The distribution of this presentation in jurisdictions outside Australia may be restricted by law and any such restrictions should be observed. Any failure to comply with such restrictions may constitute a violation of applicable securities laws. [In particular, this presentation may not be released or distributed in the United States.] This presentation does not constitute an offer to sell, or a solicitation of an offer to buy, securities in the United States. Any securities described in this presentation have not been, and will not be, registered under the US Securities Act of 1933 and may not be offered or sold in the United States except in transactions exempt from, or not subject to, registration under the US Securities Act and applicable US state securities law.

This presentation is for information purposes only and is not financial product or investment advice, nor a recommendation to acquire Modun shares. It has been prepared without taking into account the objectives, financial situation or needs of individuals.

## Competent Person Statement

The information in this announcement that relates to Mineral Resources is based on information compiled by Mr Dwiyoiko Taruno who is a member of the Australasian Institute of Mining and Metallurgy and Australian Institute of Geoscientists. Mr Dwiyoiko Taruno has sufficient experience relevant to the style of mineralisation and type of deposit under consideration and to the activity which he is undertaking to qualify as a Competent Person as defined in the 2004 Edition of the "Australasian Code for Reporting of Exploration Results, Mineral Resources and Ore Reserves". Mr Dwiyoiko Taruno consents to the inclusion of such information in this report in the form and context in which it appears.

This information has been reviewed by Dierdre Westblade of CSA Global Pty Ltd, Western Australia. Dierdre Westblade is a member of the Australian Institute of Geoscientists and has sufficient experience which is relevant to the style of mineralisation and type of deposit under consideration and to the activity which he is undertaking to qualify as a competent person as defined in the 2004 Edition of the 'Australasian Code for Reporting of Exploration Results, Mineral Resources and Ore Reserves'. Dierdre Westblade consents to the inclusion in the report of the matters based on his information in form and context in which it appears.

# Table of Contents

---

1. Executive Summary
2. Corporate Overview
3. Nuurst Project Background
4. Opportunities

# Executive Summary

---

- Effective Leadership
  - Well respected, highly experienced exploration and management teams in Mongolia and Australia.
- Quality Resource
  - 478MT Resource sub-bituminous coal.
  - Close to infrastructure, 6km to existing rail
  - Pending mining license application – Final stage of MRAM administrative process.
  - Planned hydrogeological and pre-feasibility studies
- Briquette Production Plan
  - Securing off-take agreement with Mongolian Government
  - Briquette production plan targeting 250ktpa
  - Clean coal briquettes aim to lower local pollution and waste levels

# Corporate Overview



## Hugh Warner, Non-Executive Chairman, BEc

- Chairman since 2010.
- Extensive experience as a public company director involved in the mining, oil & gas, biotechnology and service industries.

## Rick Dalton, Managing Director, BSc (Hons Mining Engineering)

- Over 25 years experience in the mining, oil and gas sector.
- 20 years in the coal industry with BHP, Wesfarmers and Griffin Coal

## James Thompson, Non-executive Director, B.Comm, LLB, CA, FINSIA

- Over 20 years experience in principal investment, investment banking and corporate finance.

## Gerry Fahey, Non-executive Director, BSc (Hons, Geol), FAusIMM, MAIG

- 35 years experience in Aust. and international minerals industry.
- Member of the Joint Ore Reserve Committee (JORC) and outgoing Chairman of the WA Branch of the Federal Council for the Australian Institute of Geoscientists (AIG).

## Achit Erdene Darambazar, Non-executive Director Mongolia

- President of MICC, Mongolia's first and leading investment bank

## Neil Hackett, Company Secretary, BEc FFin CSA GAICD

- 20 years corporate finance and governance experience

## Dan Rohr, Chief Financial Officer, BCom CA

- 20 years corporate management experience

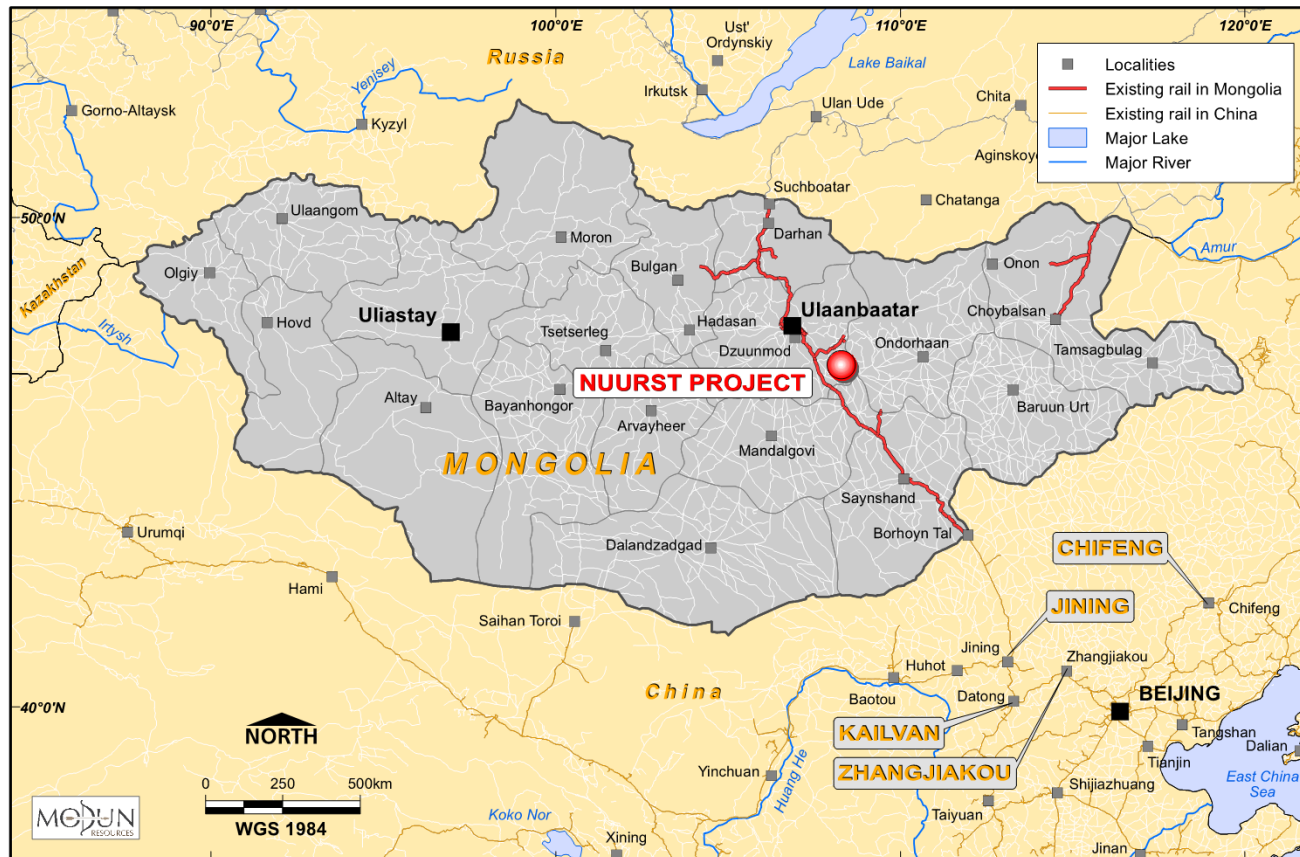
Capital Structure (ASX: MOU)		Current
Ordinary shares on issue	m	854.6
Share price	A\$	\$0.007
Market capitalisation	A\$m	\$6.0
Net cash	A\$m	\$1.0
Undiluted enterprise value	A\$m	\$5.0

Substantial Shareholders	% of Shares on Issue
Elliot Holdings	8.2%
Directors & Management <sup>1</sup>	14.8%

1. Directors and Management includes the shareholding of Elliot Holdings



# Nuurst Project – Location



- Close to existing infrastructure:
- 6km to rail;
- 6km to 35kV power supply.
- 120km from UB
- 600km to Chinese border.
- Government plans are to increase the rail capacity from 20 MTPA to 50 MTPA in the next eight years.

# Nuurst Project – JORC Resource Update

- The JORC Resource Table as of November 2012

Date Reported	Measured (MTonnes)	Indicated (MTonnes)	Inferred (MTonnes)	Total (MTonnes)
05-Nov-12	326	104	48	478

- Quality Parameters on an air dried basis

Category	Mass (M Tonnes)	IM (%adb)	Ash (%adb)	VM (%adb)	FC (%adb)	TS (%adb)	CV (Kcal/Kg)			RD gr/cm <sup>2</sup>
							adb	db	daf	
Measured	326	9.99	18.89	40.77	30.37	1.05	4774	5303	6711	1.31
Indicated	104	10	18.88	39.91	31.22	1.13	4773	5304	6711	1.33
Inferred	48	10	18.93	40.02	31.05	1.21	4721	5245	6642	1.32
Grand Total	478	9.99	18.89	40.51	30.62	1.08	4768	5297	6704	1.31

- Quality Parameters on an “as Received” Basis and Briquette Estimates

Category	Moist. (%ar)	Ash (%ar)	FC (%ar)	TS (%ar)	CV
					Kcal/kg
As Received Total	30	14.7	23.8	0.84	3701
Trial Briquettes	6.5	8.9	45.5	1.00	5648

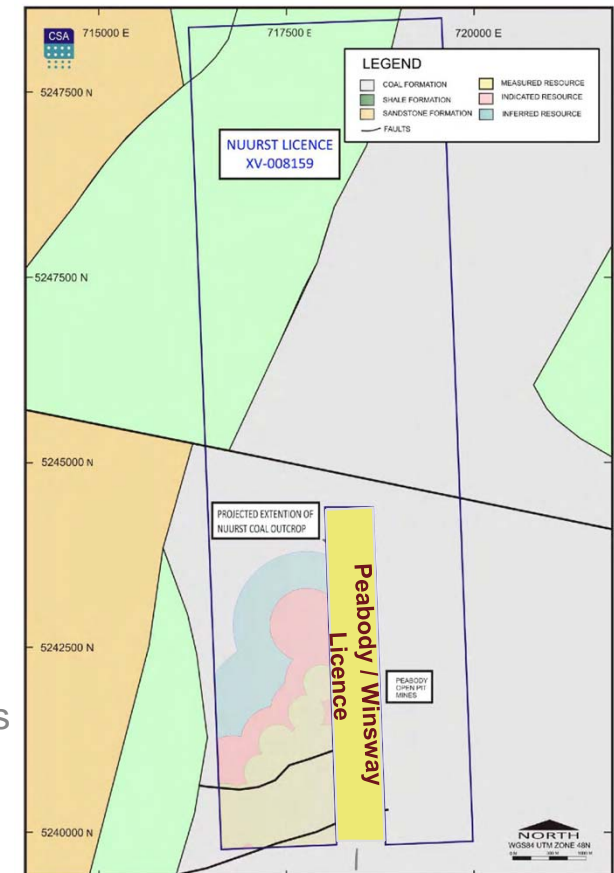


Figure 5. Tenement, Geology, and Resource Area

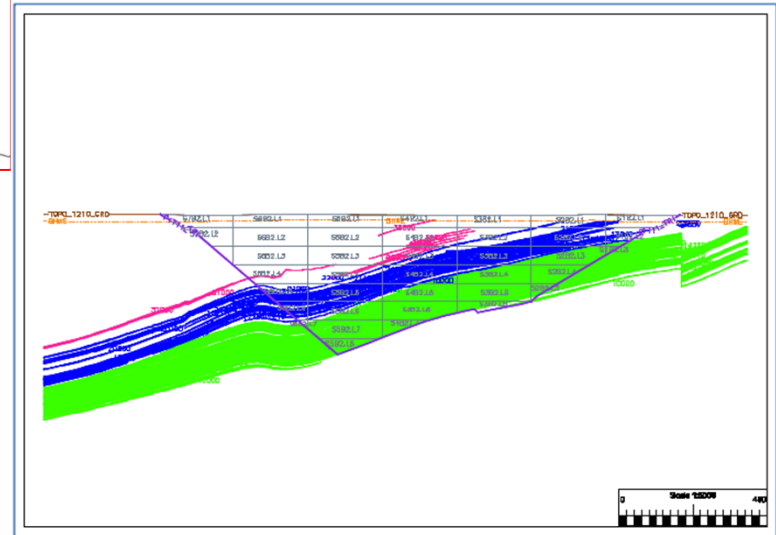
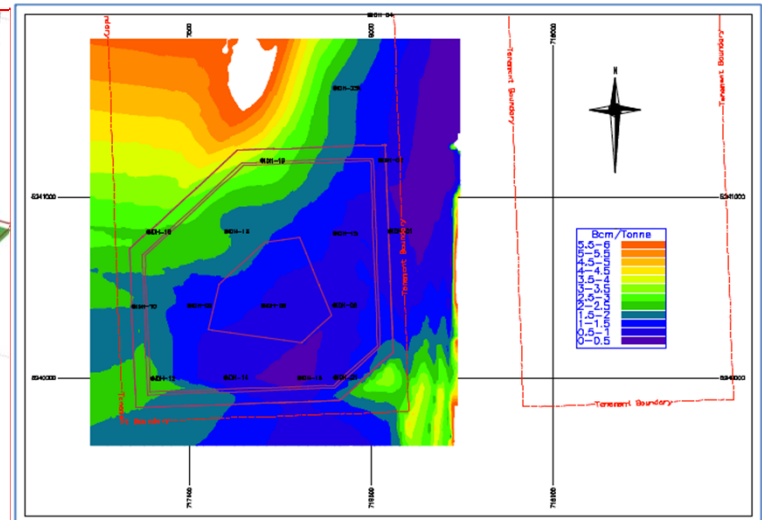
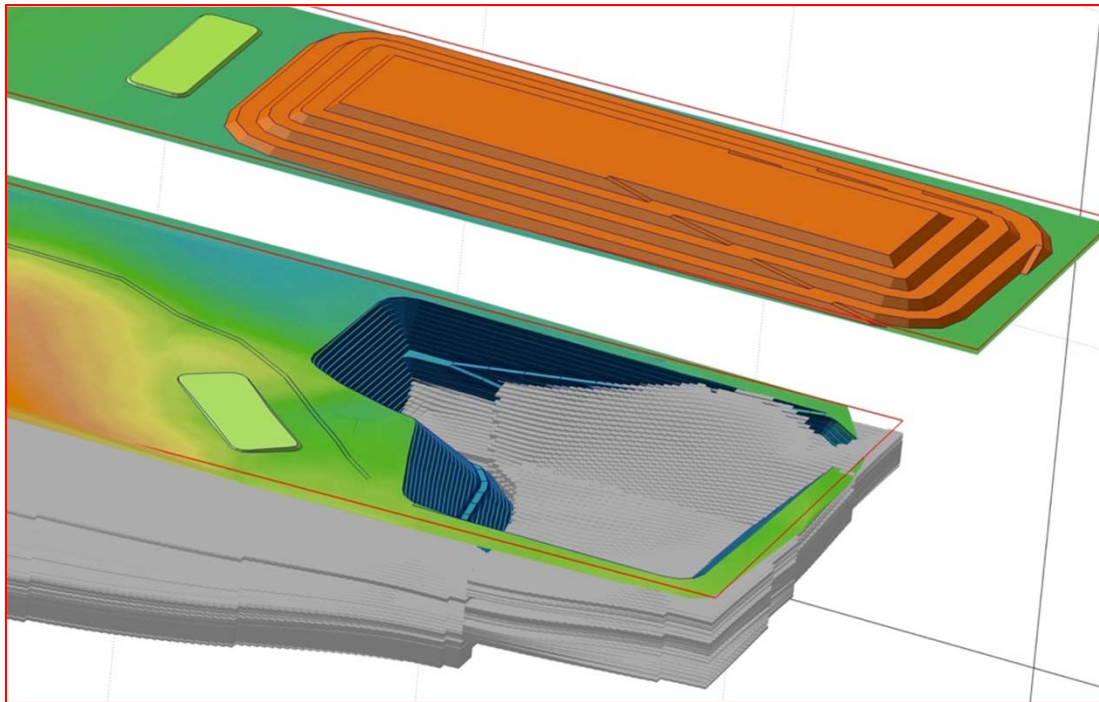
# Nuurst Project - Key Goals

---

1. Commence Production at Nuurst in 12 - 18 months:
  - Mining License approval in final phase of administrative process.
  - Complete pre-feasibility study
  - Briquette and raw coal production for domestic consumption
  - Commence mine with contractors.
  
2. 5 Year Goal:
  1. 5MTPA Nuurst Project – Domestic and Export coal supply.
  2. Domestic power supply partner.



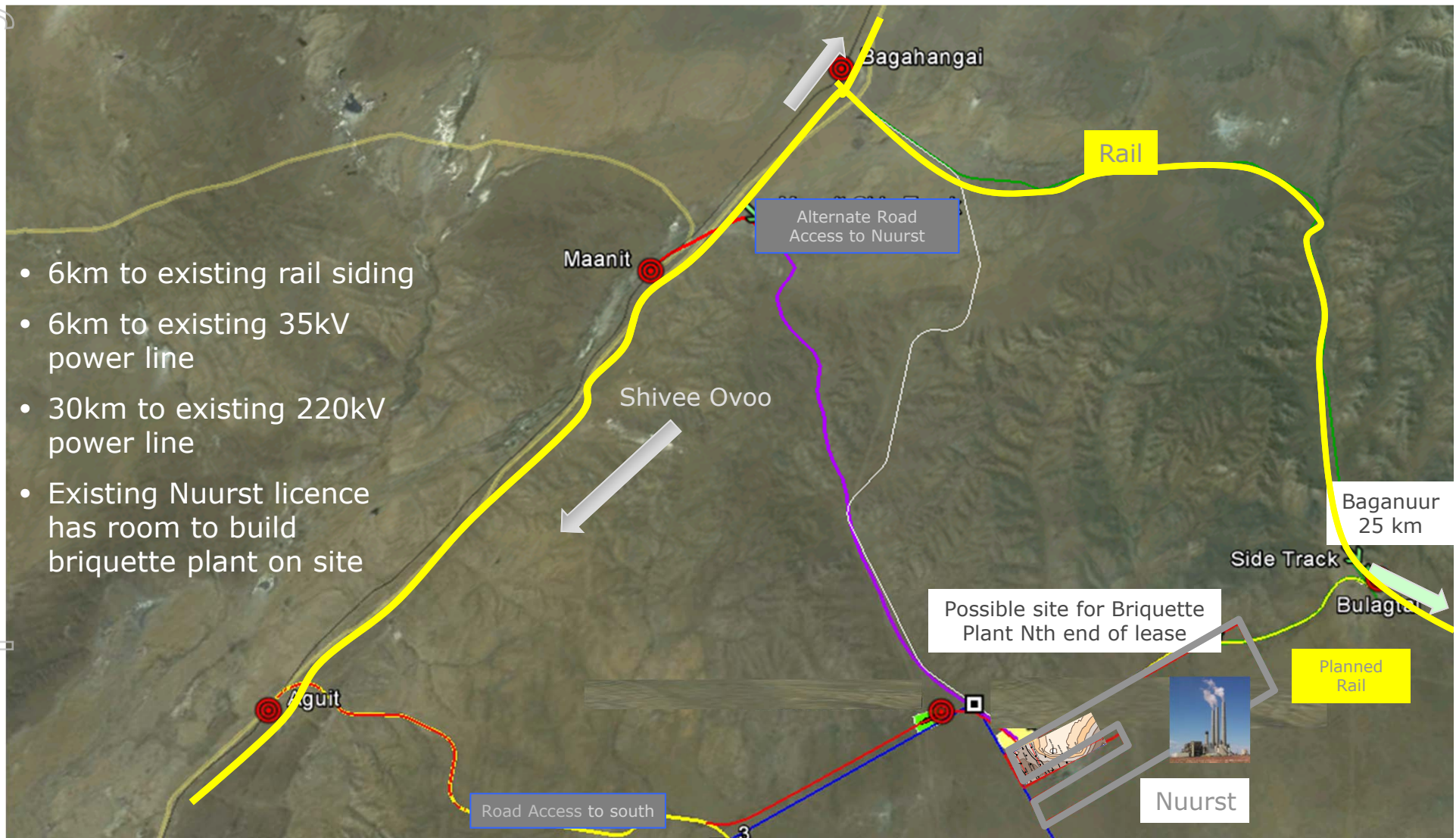
# Nuurst Project – Initial Mine Study



- Independently prepared by Bluefield Pty Ltd
- 84.7mT ROM Pit Shell – 30 year mine life
- ROM 2.3:1 Ratio overall
- Mining costs of \$US13/tonne
- Potential to increase mine life with more drilling

# Nuurst Project Regional Map

- 6km to existing rail siding
- 6km to existing 35kV power line
- 30km to existing 220kV power line
- Existing Nuurst licence has room to build briquette plant on site



# Nuurst Project

---

- Key Opportunities:
  - Government Clean Air Initiative
    - Currently negotiating purchase and sale agreement for Nuurst Coal Briquettes with Government.
  - Supply to Local Power Stations
  - Export potential to China enhanced with higher energy Briquette Coal



# Environmental Considerations

- Ulaanbaatar has been ranked as the 2<sup>nd</sup> most polluted city in the world.
- Experts attribute high pollution levels to the burning of raw coal in the ger district during winter.
- The Government is committed to reducing pollution and have formed the National Committee for Air Pollution Reduction to implement reform and to establish a new cleaner fuel production facility
- The Committee asked for expressions of interest to build such a facility
- Modun submitted a plan and trial to deliver a solution by using briquette technology. The Government undertook combustion tests using Modun Briquettes, which met Government guidelines on reducing emissions.
- Government have announced Modun as a preferred supplier.
- Off-take contract negotiations are now in train with the government.



The Air Quality Index						
0-50	Good. No adverse effects.					
51-100	Okay. Little adverse effect.					
101-150	Medium. Some adverse effects for people who are sensitive to the pollutants.					
151-200	Bad. Some adverse effects on the whole population.					
201-300	Very Bad. Noticeable adverse health effects on the whole population.					
301-500	Hazardous. Hazardous to the whole population.					
	SO <sub>2</sub>	NO <sub>2</sub>	PM10	PM2.5	CO	O <sub>3</sub>
Center West	120	-	180	236	21	-
Center East	310	245	188	25	18	
Songinohairhan (West)	105	145	257	15		

Source: The National Committee on Reducing Air Pollution of Ulaanbaatar  
(Office of the President of Mongolia)

# Briquette Processing Plant

- Modun is planning to construct a briquette processing plant on the northern portion of the exploration lease with an initial capacity of 250,000 tons per annum.
- The Company is currently finalizing an off-take agreement with the Government of Mongolia for all produced briquettes.
- The binderless briquette technology, which was pioneered and trademarked by an Australian Company, can only process sub-bituminous coal if the coal meets certain requirements. Tests in Australia and Mongolia demonstrate that the coal from Nuurst can be used for producing briquettes.



Briquette Processing Plant

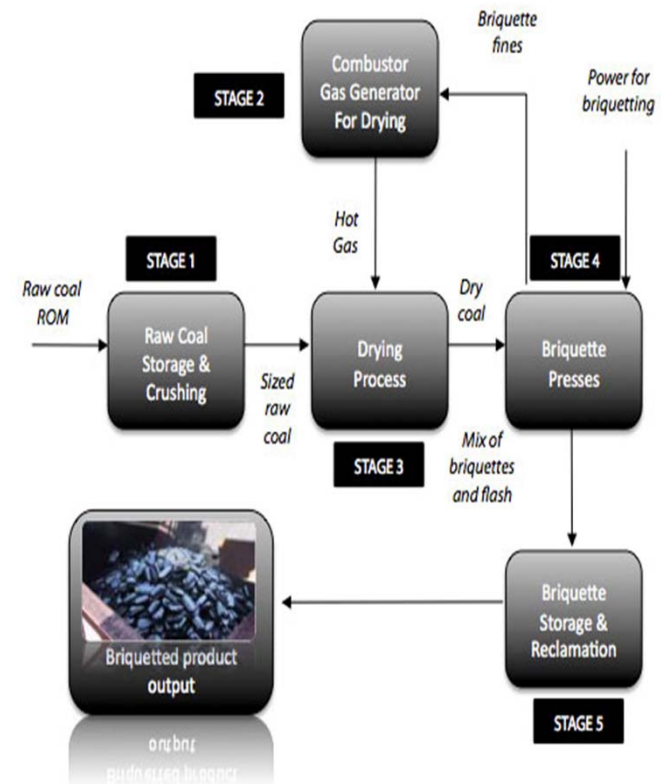


Binderless Coal Briquettes

# Environmental Impact

## Advantages of Briquetting Technology

- Low cost mechanical process.
- Increase in energy from 3700 Kcal/Kg to 5500 Kcal/kg. This will result in less coal required to generate the same heating output.
- Reduction in airborne emissions (particulate matter) that satisfies Government standards for reducing pollution.





# Raw Coal supply to Power Stations

## Discussions with Power Stations to supply coal to Ulaanbaatar



- Currently the Four State Owned Power Stations produce 1000MW of power.
- Forecasters expect another 3000MW of power is required in the next ten years.
- Mongolia remains a nett importer of power.
- Ulaanbaatar experienced Power shortages last winter.
- The main supply of coal for this requirement comes from Baganuur Coal Mine at present, 25km to the east of Nuurst and 130km from Ulaanbaatar.
- This mine has been established for 35 years, with an increasing strip ratio
- We believe that Nuurst is at a competitive advantage to be a raw coal supplier to the Power Stations as power demand increases in Ulaanbaatar to ensure consistent Power Supply.

# Estimated Mine Start-up Costs

2013 Briquette and Raw Coal CAPEX	
Uses	000s USD\$
Briquette Processing Plant	25,000
Mine Development	18,500
Total	43,500

- Key Assumptions:

- Initial Production: 1,000,000 tons of raw coal and 250,000 tons of coal briquettes
- Price negotiations: The government paid approximately 187, 000 MNT (US\$130) per tonne for Semi-coking briquettes last year.
- 2.3:1 Stripping ratio
- Estimated mining cost of \$13 / ton of unprocessed coal
- Estimated processing cost of \$12 / ton for briquettes

# Nuurst Project - Summary

---

- Low Stripping Ratio / low operating cost thermal coal
- Nuurst Coal is conducive to producing low cost binderless briquettes:
  - Reduced environmental impact; provides higher energy coal for domestic and export market
  - Appointed a preferred supplier of coal briquettes to Mongolian Government.
  - Negotiating a product sale and purchase agreement for briquettes with Mongolian Government.
- Close to main Rail infrastructure;
  - ✧ Access to Ulaanbaatar and local power stations.
  - ✧ Access to Chinese export market
- Close to existing Power Grid to East.
- Adjacent to Peabody / Winsway License. Potential to share infrastructure costs and benefit from combined lower effective strip ratio.
- Nuurst sits close to rail corridor for future industrial expansion to the South.
- Excellent local and International management capability.
- Strategically well placed to supply domestic power stations.



Contact Details:

Australia

245 Churchill Ave, Subiaco, WA.

Phone: +61 8 6143 9108

Mongolia

4<sup>th</sup> Floor Ambassador Office Building

Sukhbaatar District, 1<sup>st</sup> Khoroo.

Enkhtaivan Ave., 15A/5

Ulaanbaatar

Phone: +976 11 321625

Email: [info@modunresources.com](mailto:info@modunresources.com)

Web site: [www.modunresources.com.au](http://www.modunresources.com.au)

ASX: MOU

Modun Resources  
Thank You

Modun Resources Limited ABN 95 066 139 991