

WIDOWMAKER RC DRILLING PROGRAM UPDATE

Highlights

- **Total of 1,876m drilled in 9 holes on 8 ground EM targets**
- **Laboratory analytical results for all samples expected late July / early August 2013**

Summary

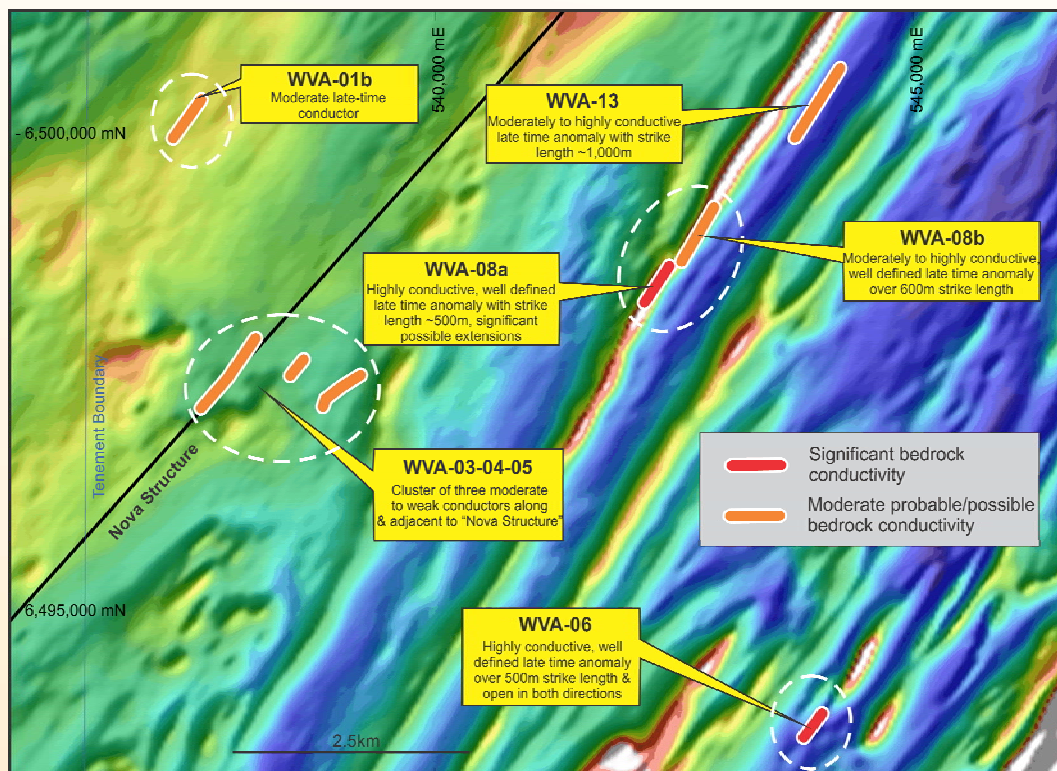
Buxton Resources Limited (ASX: BUX & BUXO) has completed its maiden RC program at its Widowmaker Project in the Fraser Range nickel province.

All 8 conductors (see Figure 1 below) are now explained as being due to either pyrite (iron sulphide) or graphite, or a combination of the two. Minor chalcopyrite (copper-iron sulphide) was identified in two holes, although its significance is not yet understood.

The major rock type intersected was a biotite-garnet gneiss and no evidence of mafic-ultramafic intrusive rocks was found.

All drill hole samples have been despatched for laboratory analysis. Results are expected to be available late July / early August 2013.

The low cost RC drill program was partly funded by the West Australian Government's Royalty for Regions Exploration Incentive Scheme which will contribute a maximum of \$150,000 towards the drilling at the Widowmaker Project.



For personal use only

Figure 1. Ground EM conductors over magnetic image – Widowmaker Ni-Cu Project.

Hole ID	Easting	Northing	Dip (degrees)	Azimuth (degrees)	Depth (m)
WMRC001	542301	6498390	60	135	202
WMRC002	542591	6498862	60	135	262
WMRC003	543908	6493711	60	135	214
WMRC004	538974	6497244	80	135	160
WMRC005	538535	6497541	80	135	130
WMRC006	537743	6497355	80	315	288
WMRC007	537305	6500185	70	135	328
WMRC008	543941	6500538	60	135	196
WMRC009	547430	6500309	90	0	96

Table 1. Drill hole collar and depth information.

About Widowmaker Ni-Cu Project

The Widowmaker Ni-Cu Project is located approximately 22km along strike from Sirius Resources' (ASX: SIR) Nova-Bollinger Ni-Cu discovery in the emerging Fraser Range Nickel Province, Western Australia. The project covers an area of 225km², and over 20km of potential strike of the gneiss units that host "the Eye" mafic – ultramafic intrusive that contains the Nova-Bollinger deposit.

For further information regarding Buxton Resources Limited please contact:

Anthony Maslin

Managing Director

amaslin@buxtonresources.com.au

Competent Person Statement

The information in this report that relates to exploration results and geology is based on information compiled and/or reviewed by Dr Julian Stephens, Member of the Australian Institute of Geoscientists and Non-Executive Director for Buxton Resources Limited. Dr Stephens has sufficient experience which is relevant to the activity being undertaken to qualify as a "Competent Person", as defined in the 2004 edition of the Australasian Code for Reporting of Exploration Results, Mineral Resources and Ore Reserves and consents to the inclusion in this report of the matters reviewed by him in the form and context in which they appear.

For personal use only