



**The Mining 2013
Resources
Convention
Brisbane**

Bringing Back The Excitement

24th October 2013

ASX : MGV

**Rob Waugh
Managing Director**

Why MGV?



Seven key elements (Base and Precious Metals Explorer):

- 1. Huge land package – Prospective Ni-Cu province**
 - Musgrave (Ni-Cu-PGE's)
- 2. Emerging Silver-Zinc-Lead-Copper-Gold district**
 - Menninnie (Ag-Zn-Pb-Au-Cu)
- 3. Excellent drill ready targets**
 - Chasing the giants
- 4. Brownfield & greenfield potential**
- 5. Strong financial position**
- 6. Experienced team**
 - High quality register
- 7. Value opportunity**
 - Significant upside potential



Financial Overview



For personal use only

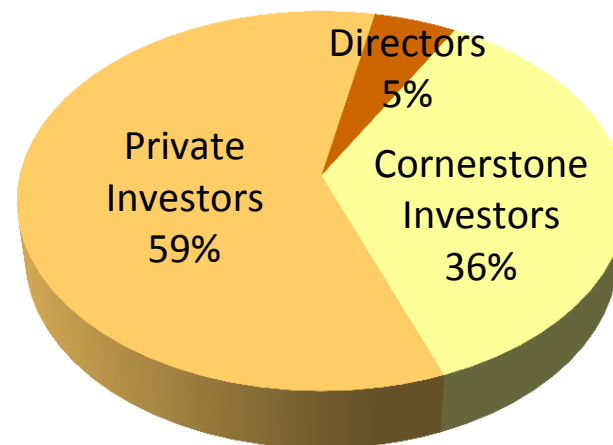


| | |
|---|-------------|
| Shares on Issue | 121 Million |
| Share Price (18 th Oct 2013) | 6.0c |
| Cash on Hand (Sept 2013) | \$8.6M |
| Debt | \$0 |
| Market Cap. (@ 6.0c) | \$7.3M |
| Enterprise Value | - |

Currently trading under cash backing



| Options on Issue | Expiry | Ex. Price | Number |
|------------------|---------|-----------------|------------|
| Total | 2016-18 | \$0.25 - \$0.50 | 16,450,000 |



Fully Diluted

Top 10 Shareholders



For personal use only

- 121M Shares
- 36% held by Cornerstone Investors

| Top 10 Shareholders | % Holding |
|---|-----------|
| Mithril Resources Investments Pty Ltd | 7.7 |
| Independence Group NL | 7.5 |
| Goldsearch Ltd | 7.2 |
| Barrick (Australia Pacific) Limited | 5.0 |
| Silver Lake Resources Limited | 4.6 |
| Argonaut Resources NL | 2.1 |
| Kimbriki Nominees Pty Ltd | 1.6 |
| Mr WD Goodfellow | 1.3 |
| JP Morgan Nominees Australia Ltd CI A/C | 1.2 |
| Octifil Pty Ltd | 1.1 |
| | 39.1% |



as at 18th Oct 2013

* The top 20 shareholders hold 46.3%

Board & Management



For personal use only



Graham Ascough BSc, MAusIMM, PGeo (Non-Executive Chairman)

- Geoscientist with >20 year's exploration experience (Ex Falconbridge). Significant Ni-Cu expertise & base metal discovery success.



Robert Waugh MSc, BSc, FAusIMM, MAIG (Managing Director)

- Geologist with >20 years of exploration experience (Ex WMC & BHP) including 10 years in Ni-Cu exploration. Ni-Cu, gold and uranium discovery success.



Kelly Ross BBus, CPA, GradDipCSP (Non-Executive Director)

- Accountant and Chartered Secretary with over 25 year's experience in the mining industry.



John Percival (Non-Executive Director)

- Over 25 year's experience in broking, investment and merchant banking including 15 years as investment manager of Barclays Bank New Zealand Limited.



Donald Stephens BA(Acc), FCA (Company Secretary)

- Chartered Accountant with over 25 year's experience as a corporate adviser across various industry sectors including mineral exploration.



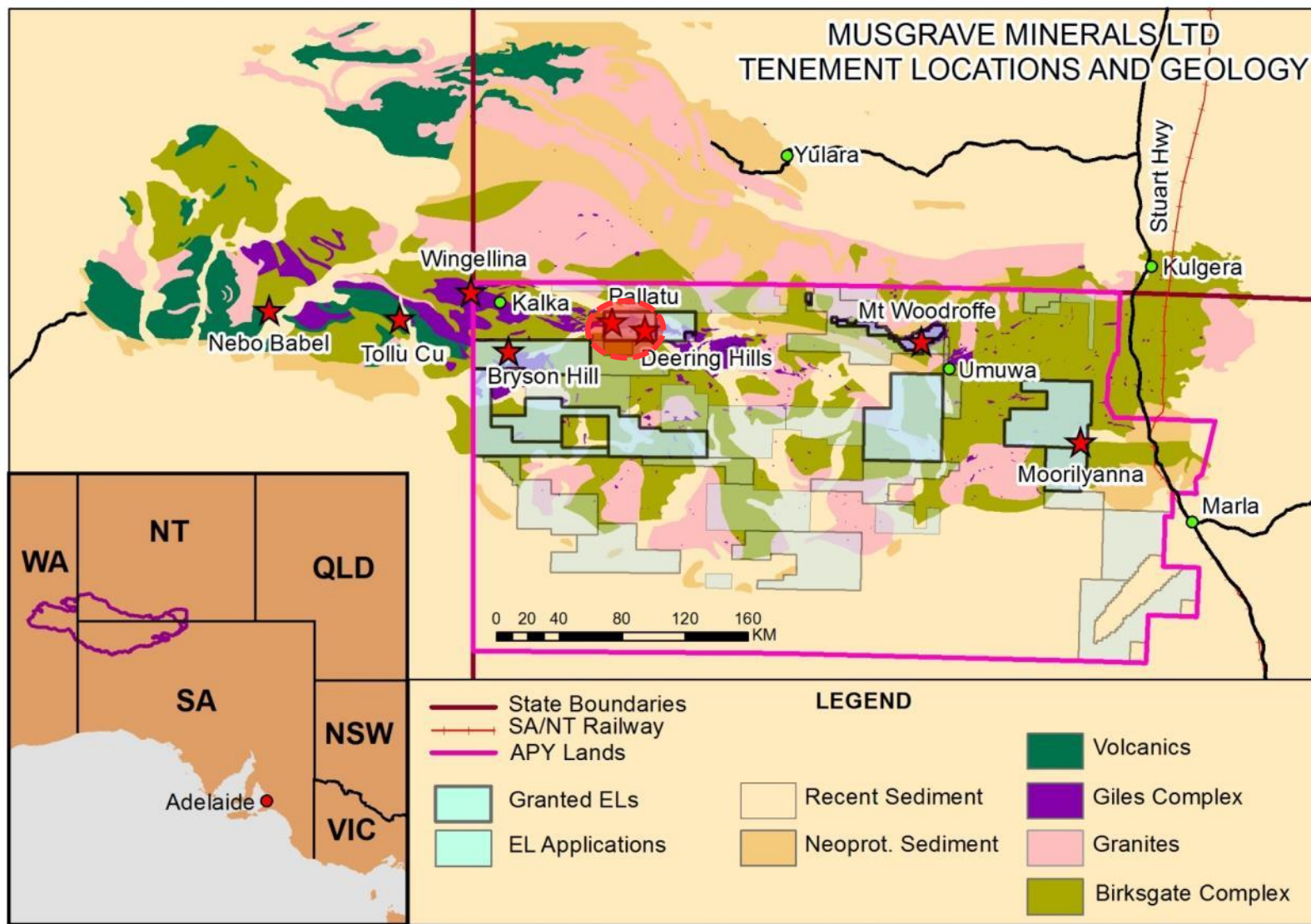
Ian Warland BSc (Hons), MAusIMM (Exploration Manager)

- Geologist >20 years of exploration experience. Good discovery track record.

Musgrave Project Location



For personal use only

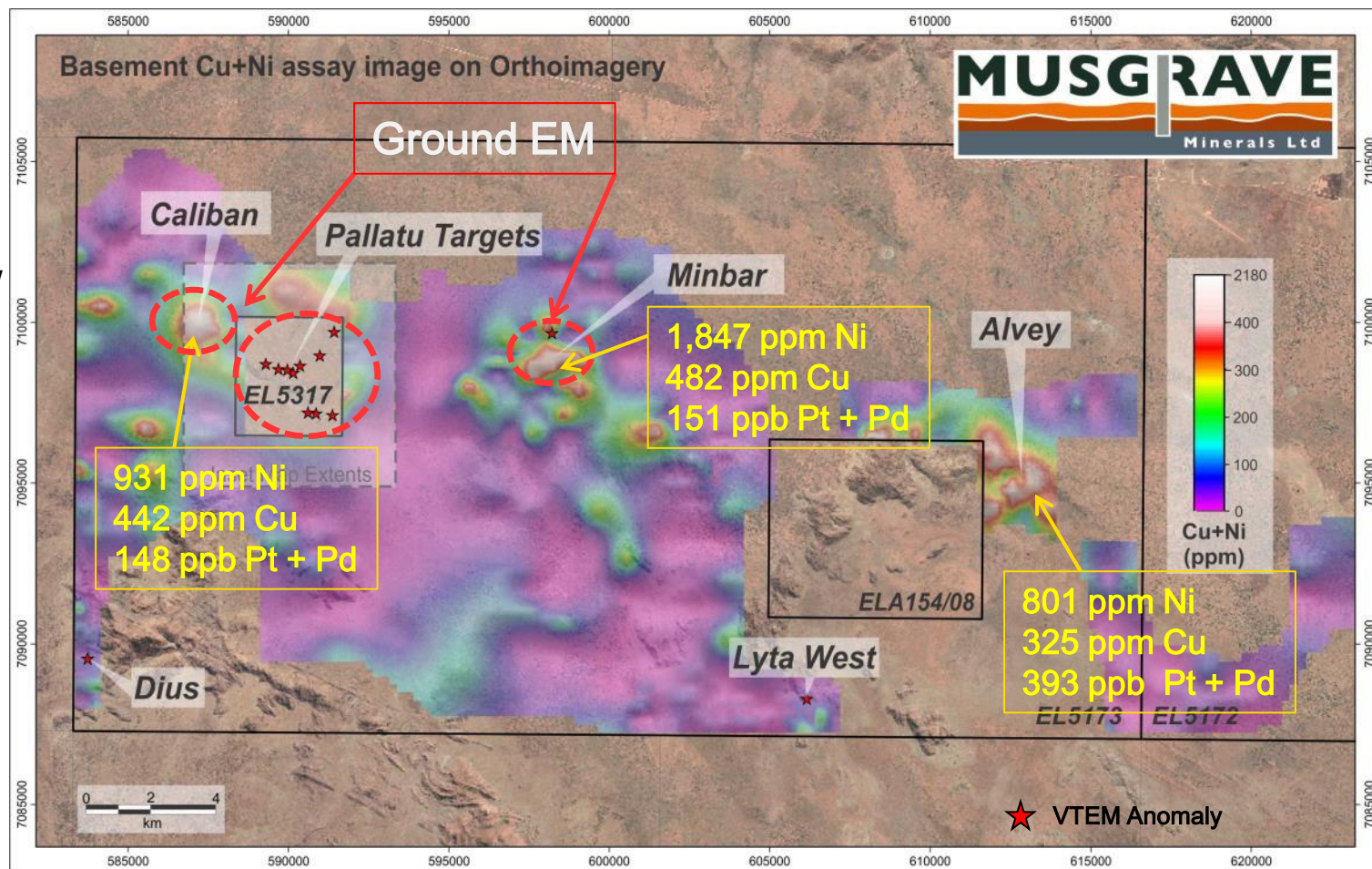


Deering Hills / Pallatu Geochem/VTEM Targets



For personal use only

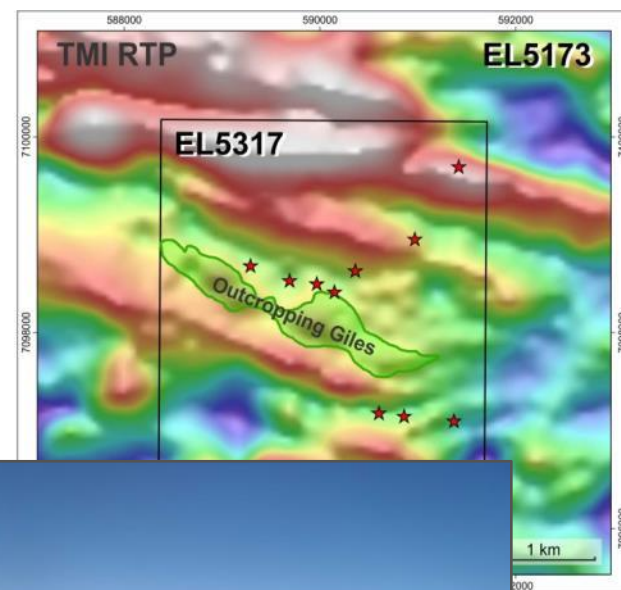
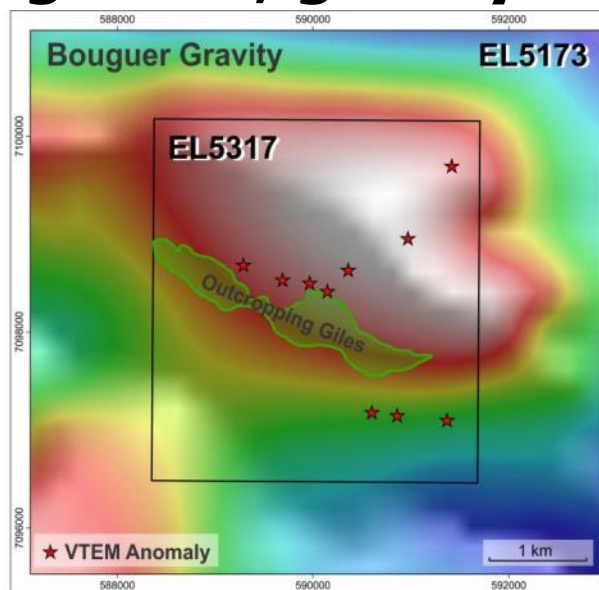
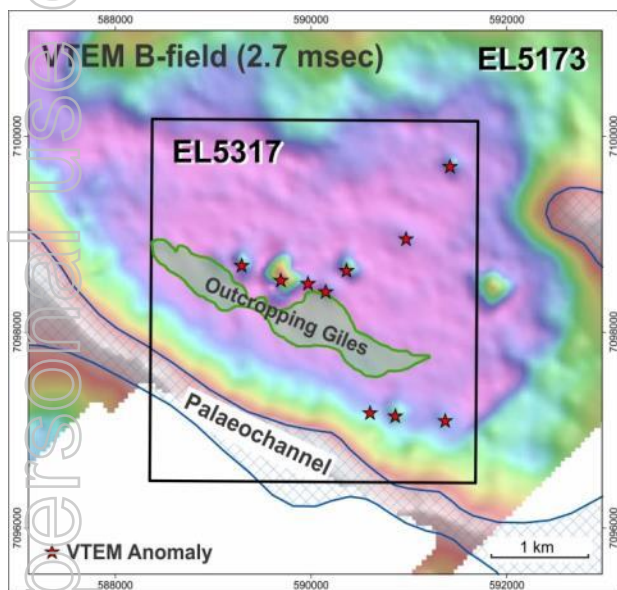
- ❑ Priority VTEM targets identified
- ❑ All targets under shallow sand cover
- ❑ New Pallatu tenement access granted
- ❑ Ground EM survey currently underway



Massive Ni-Cu Sulphide Targets Untested

Pallatu Targets

- ❑ Anomaly cluster
- ❑ Co-incident magnetics, gravity and EM anomalies



- ❑ Ground EM survey commenced

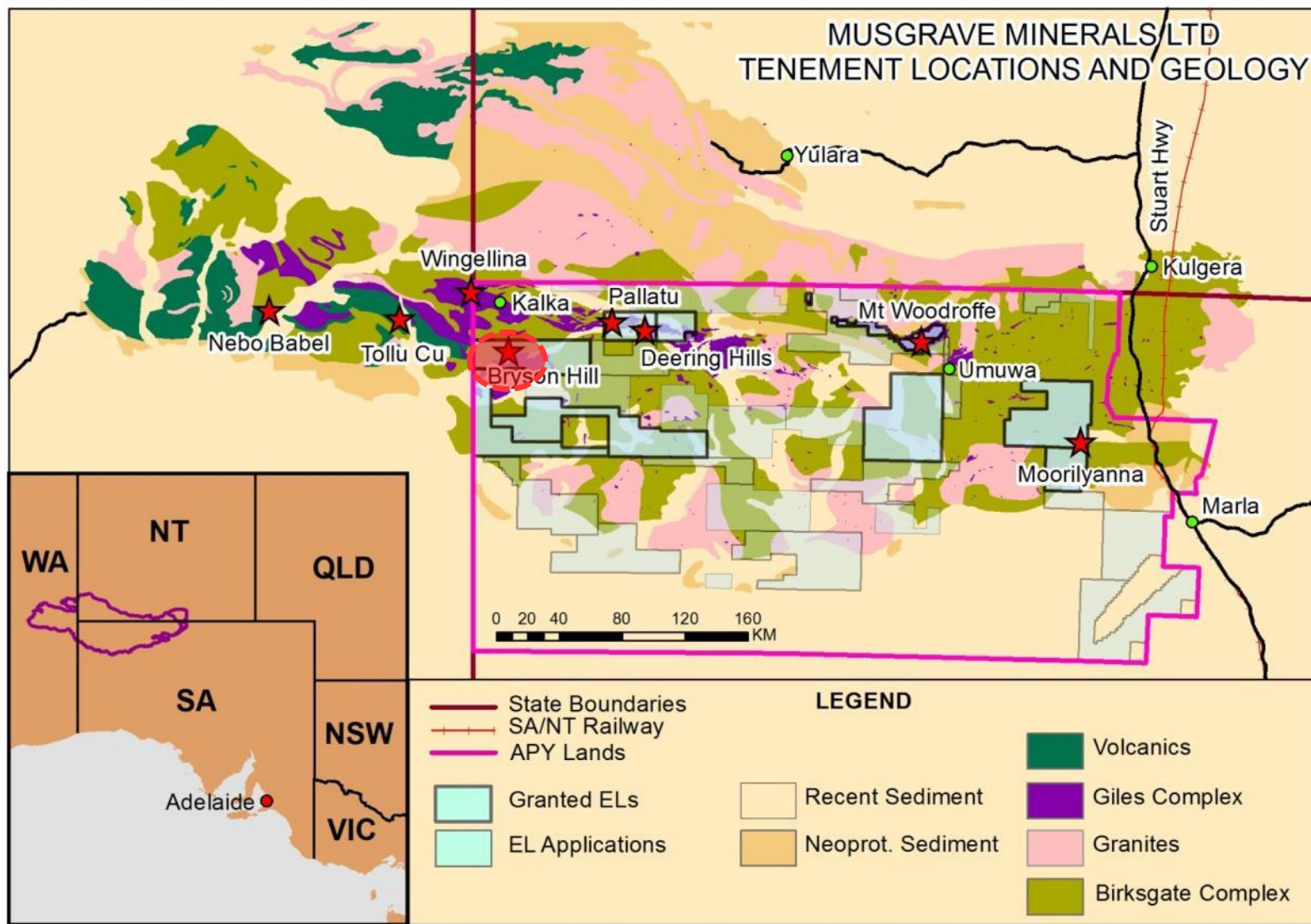


**Magmatic NiS deposits commonly form in clusters
e.g. Voisey's Bay, Kabanga, Raglan etc.**

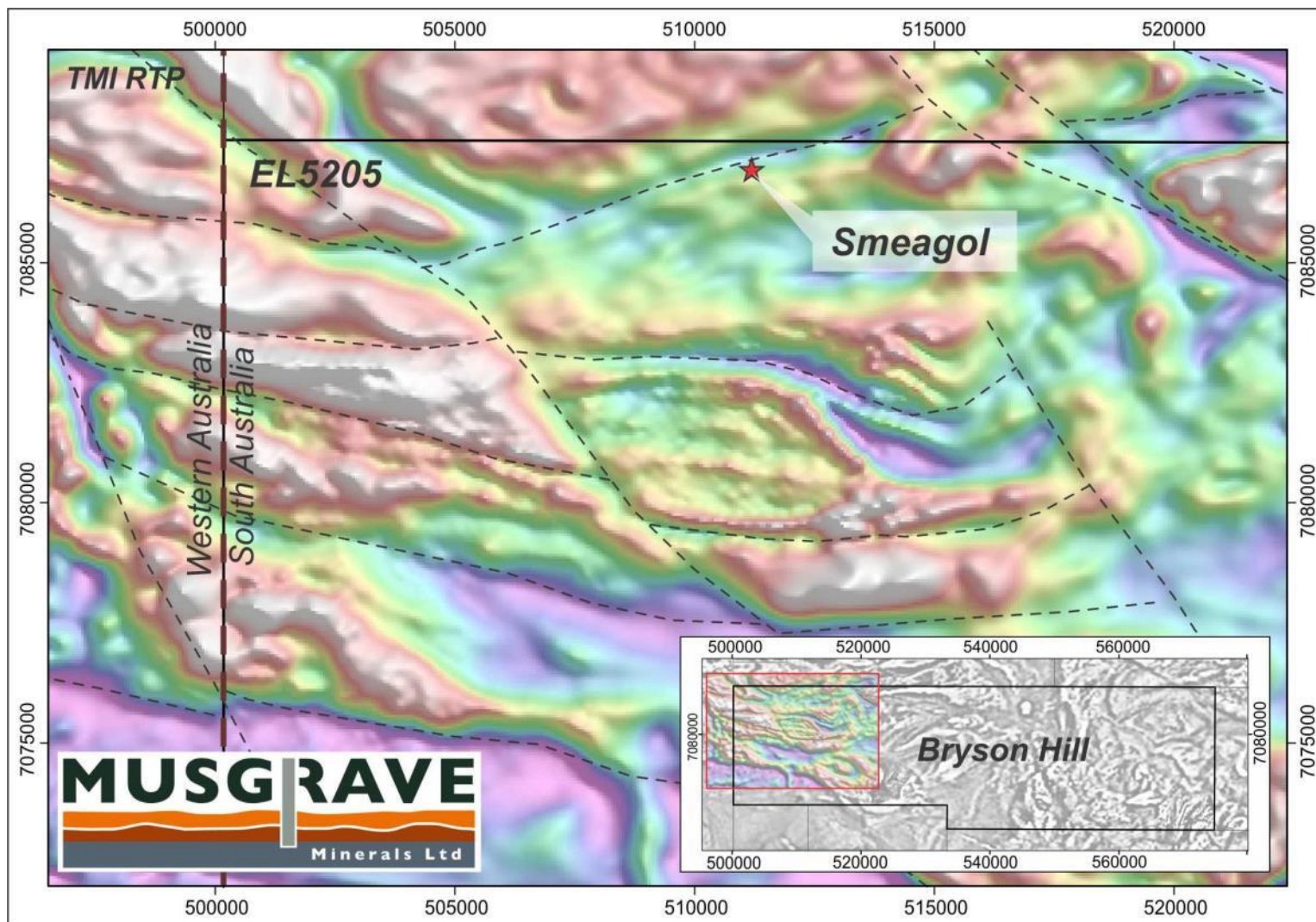
Bryson Hill Project



For personal use only



Smeagol Target



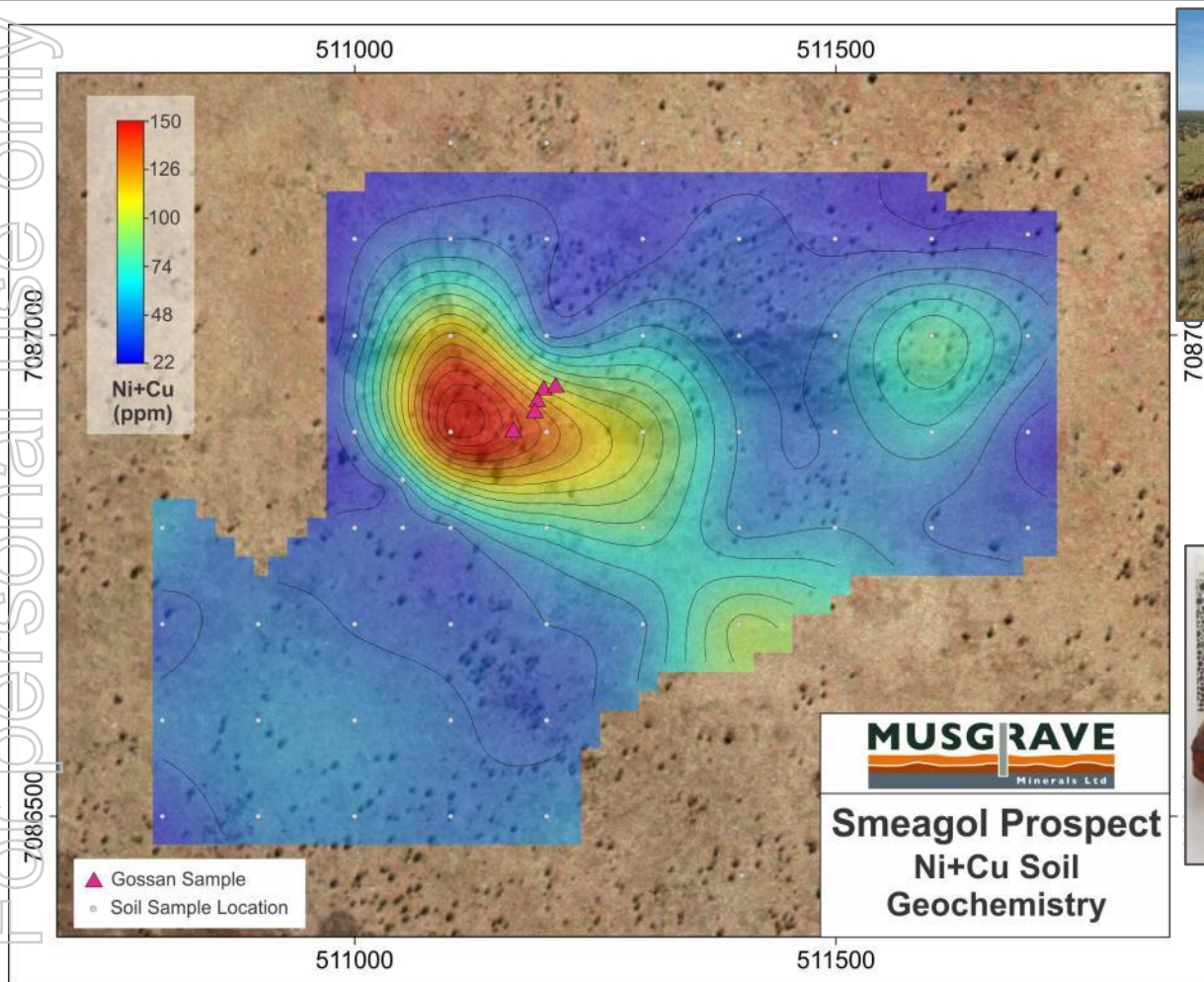
TMI Aeromagnetics



For personal use only

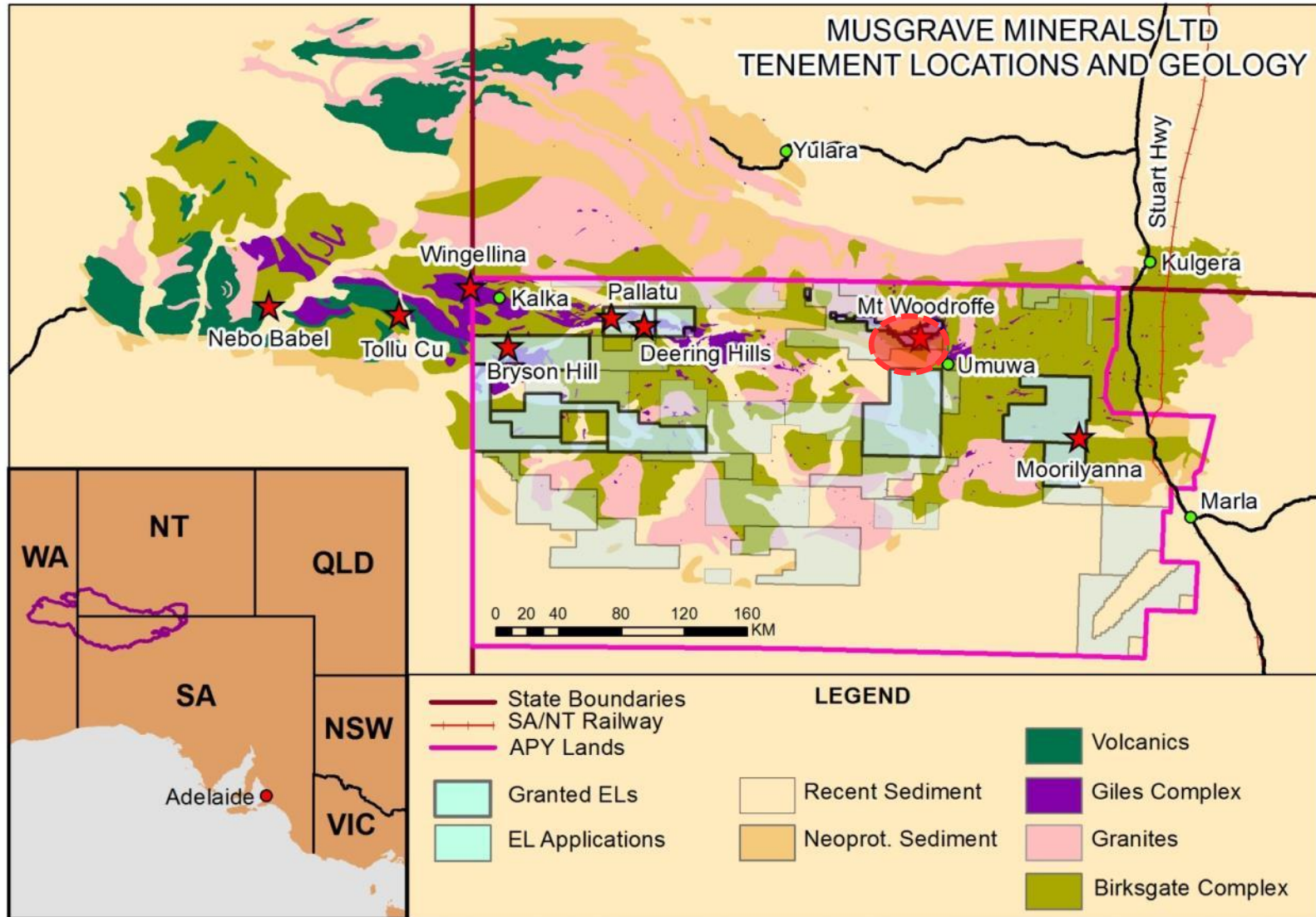
Smeagol Gossan

For personal use only

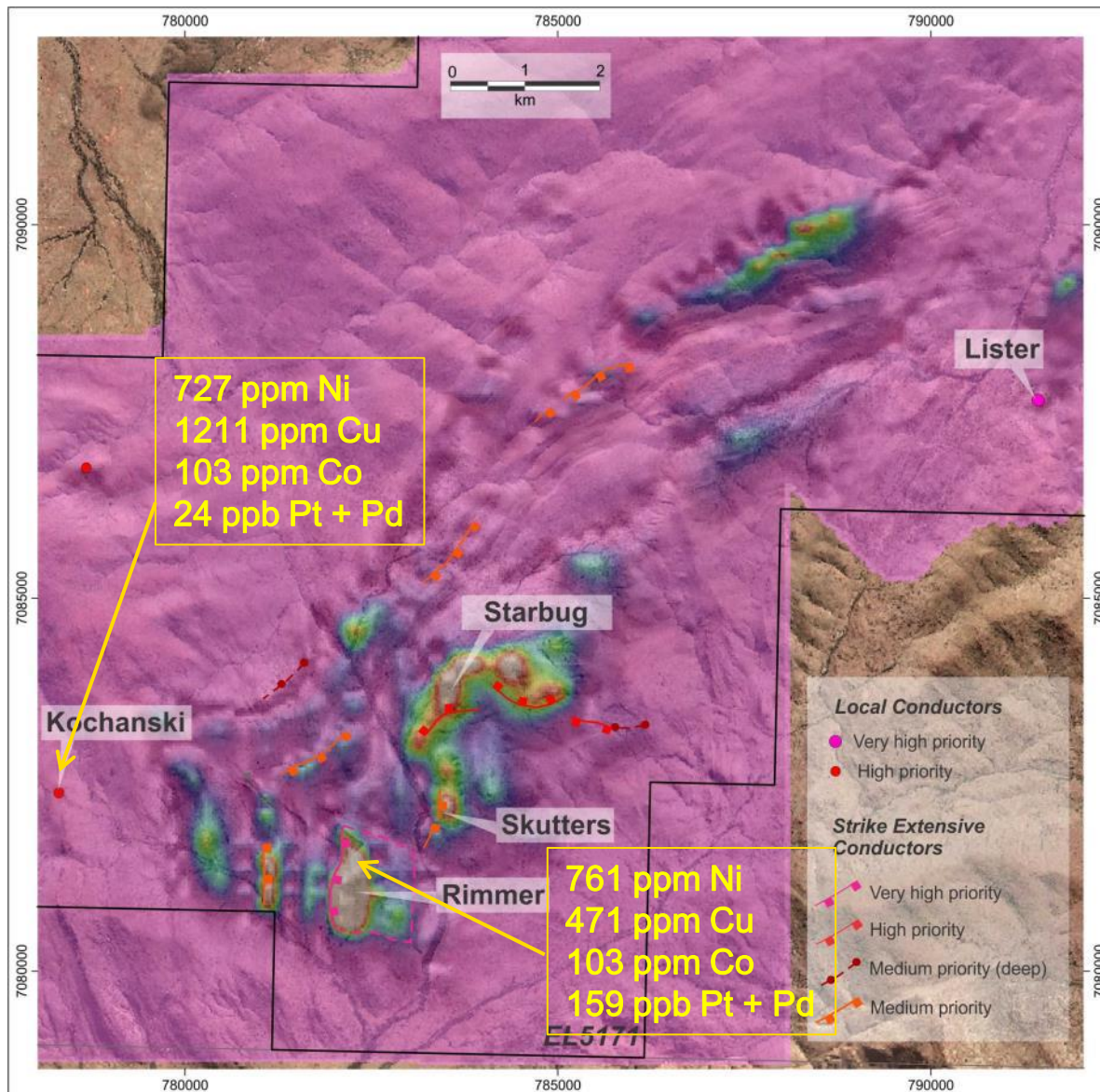


Gossan Sample
0.23% Ni, 0.17% Cu, 482ppm Co, 220ppb Pt +Pd

Mt Woodroffe Project

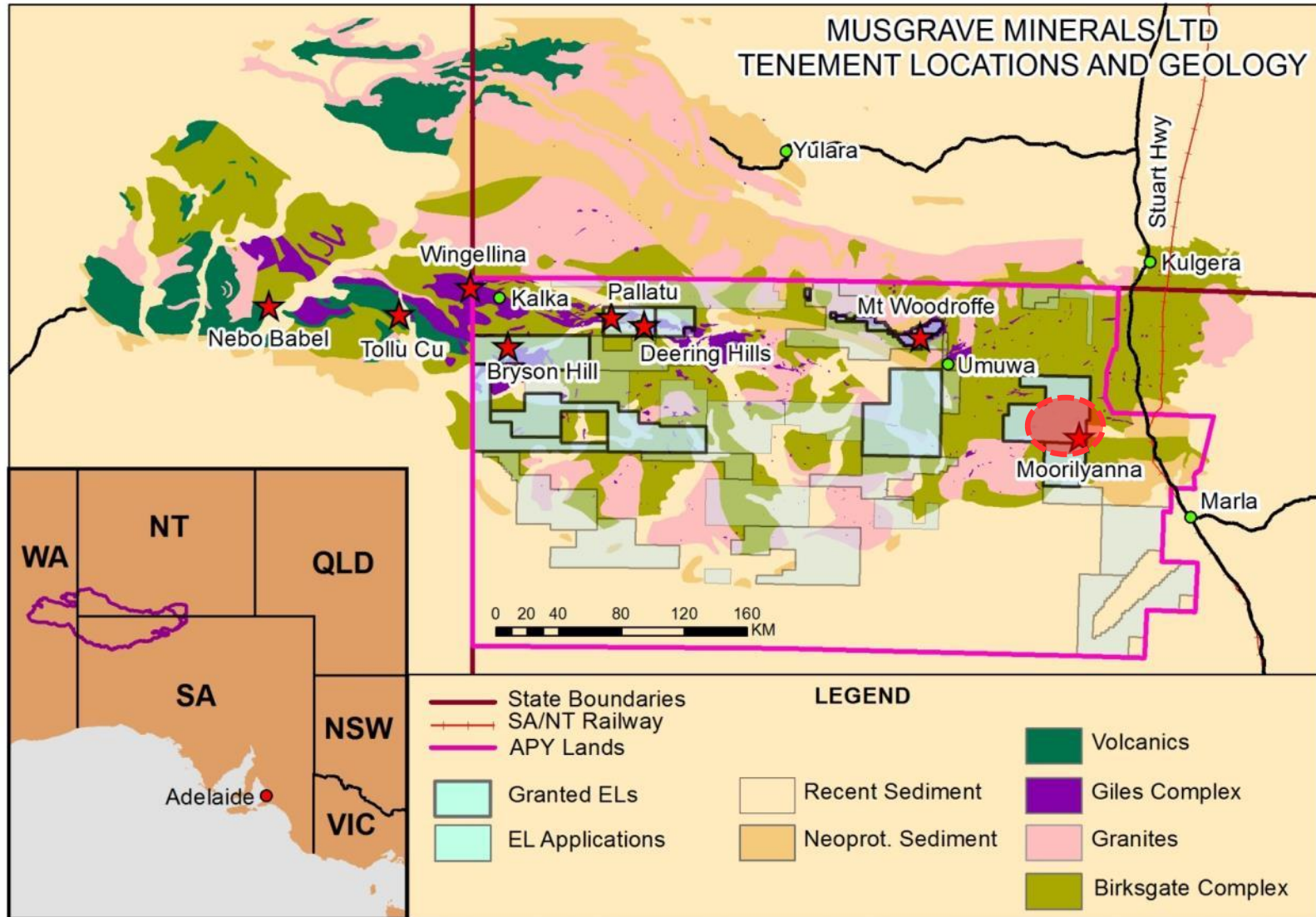


Woodroffe Targets

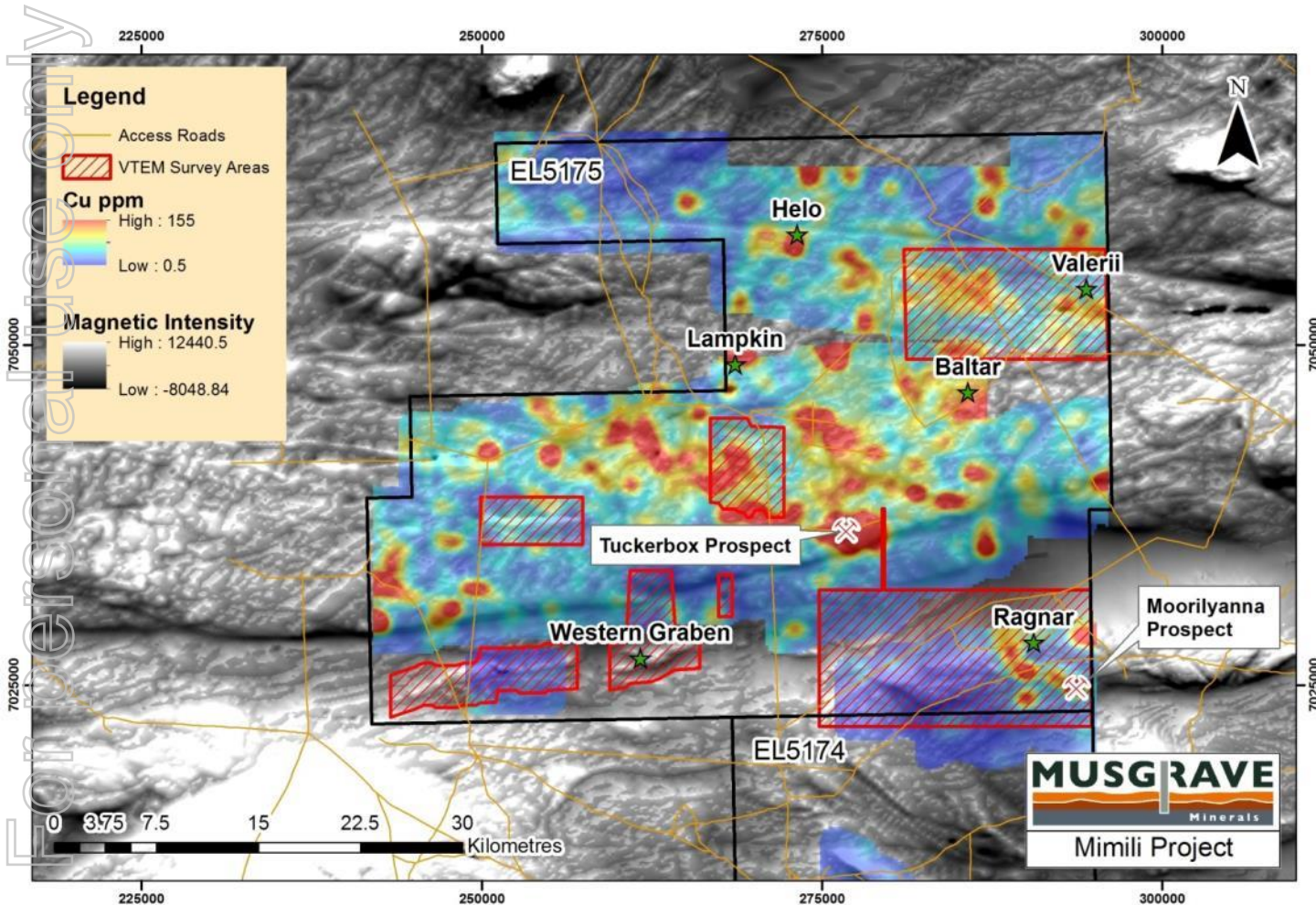


- ❑ **High priority NiS VTEM targets**
- ❑ **Ground EM conductors confirmed at Lister and Kochanski**
- ❑ **Anomalous rock chips at Kochanski & Rimmer**

Mimili Project



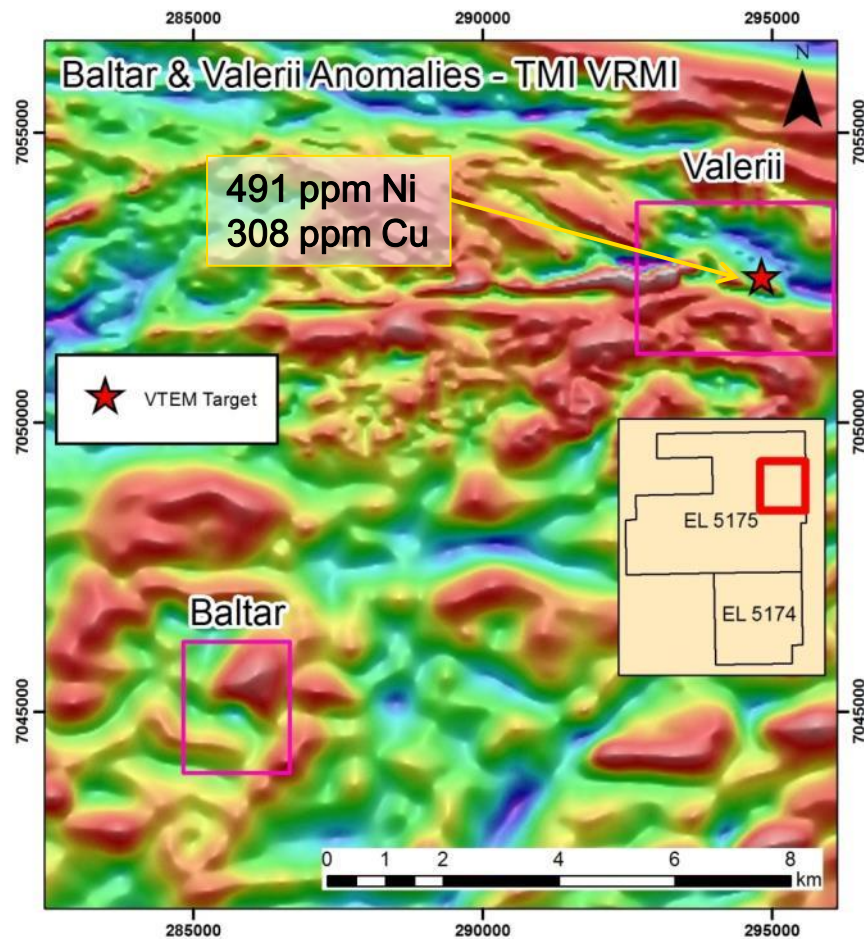
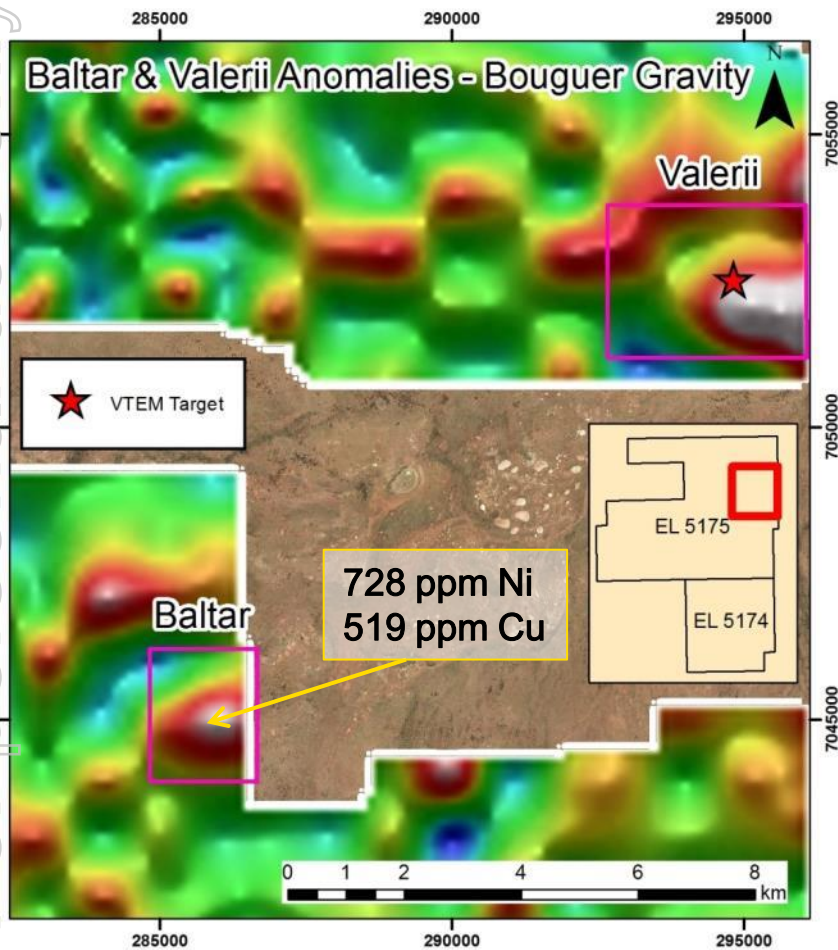
Mimili Targets



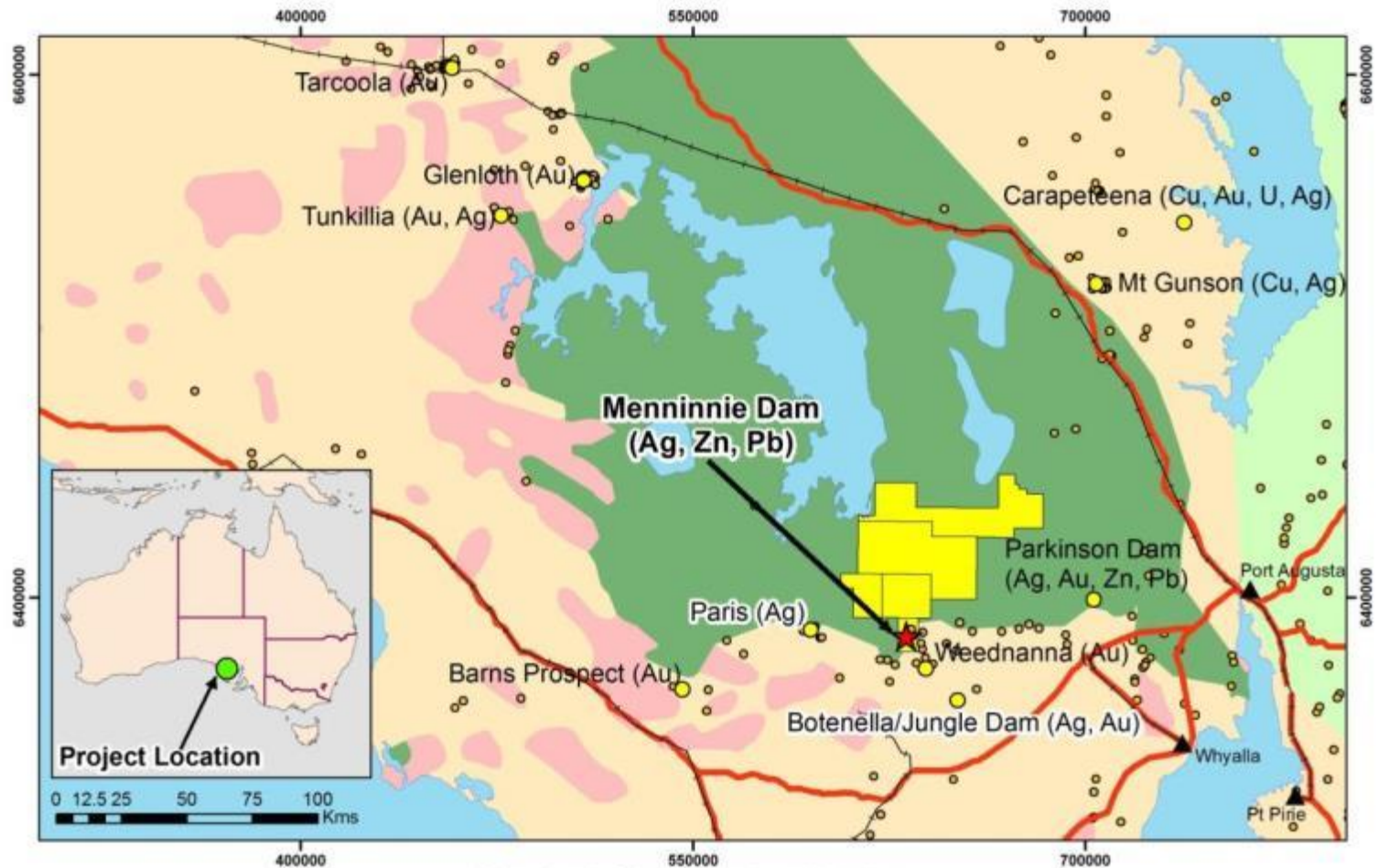
- ☐ Co-incident mag, gravity, geochem anomalies
- ☐ VTEM conductors
- ☐ IP Targets



Mimili Targets



Menninnie Project Location



Menninnie Silver-Zinc-Lead Project

- Younger Cover Sequences
- Gawler Range Volcanics
- Hiltaba Suite Intrusives
- Archean/Proterozoic Basement

- Musgrave/Menninnie JV Tenements
- Mine/Prospect
- Ag, Cu, Au, Pb or Zn Occurrence

- Town/Smelter
- Principal Road
- Railway

Menninnie Dam Project



- **Well defined existing resource with potential to extend and upgrade:**

7.7Mt @ 27g/t Ag, 3.1% Zn, 2.6% Pb

(*Inferred Resource estimated by Terramin Australia Limited in 2011 in accordance with the 2004 JORC code)

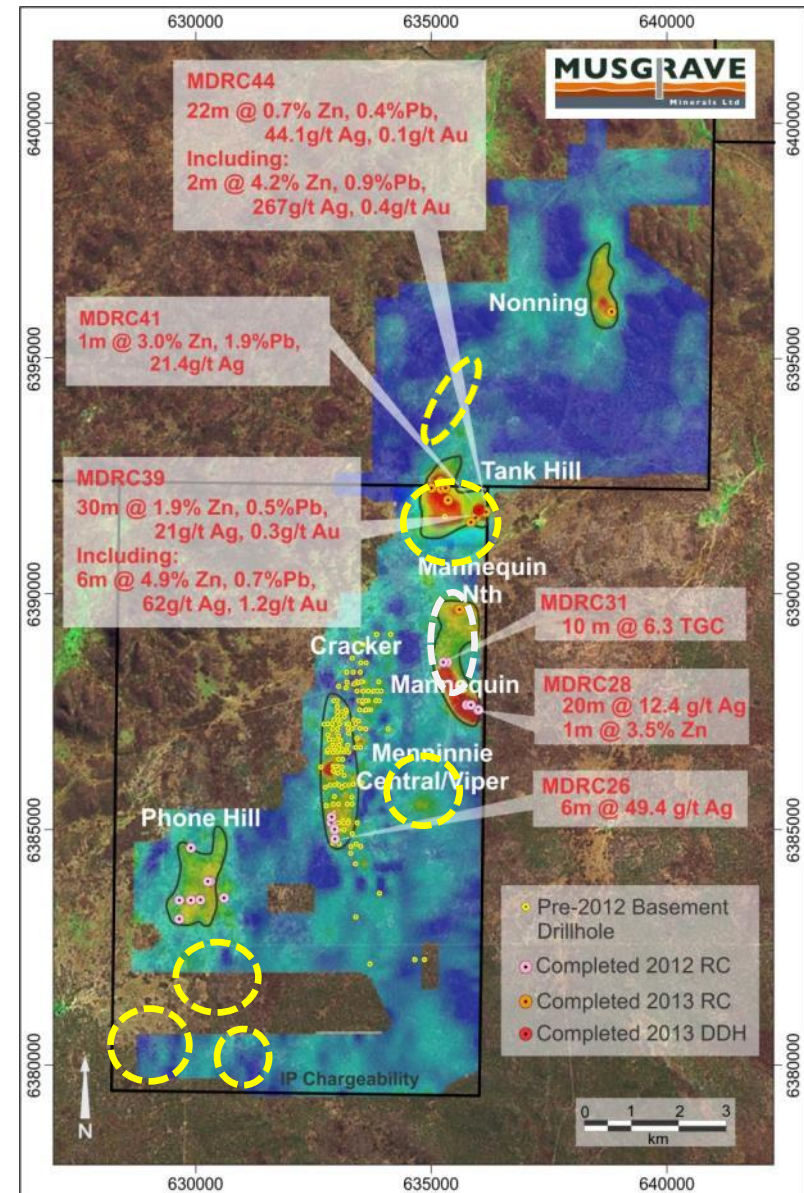
- **Significant untested silver potential – only 20km east of Paris (Investigator Resources Ltd (ASX:IVR))**
- **Potential high grades (Ag, Pb, Zn, Au & Graphite)**
- **Close to infrastructure (Port Augusta, Port Pirie)**
- **New Targets and mineralisation (Tank Hill, Erebus)**

For personal use only



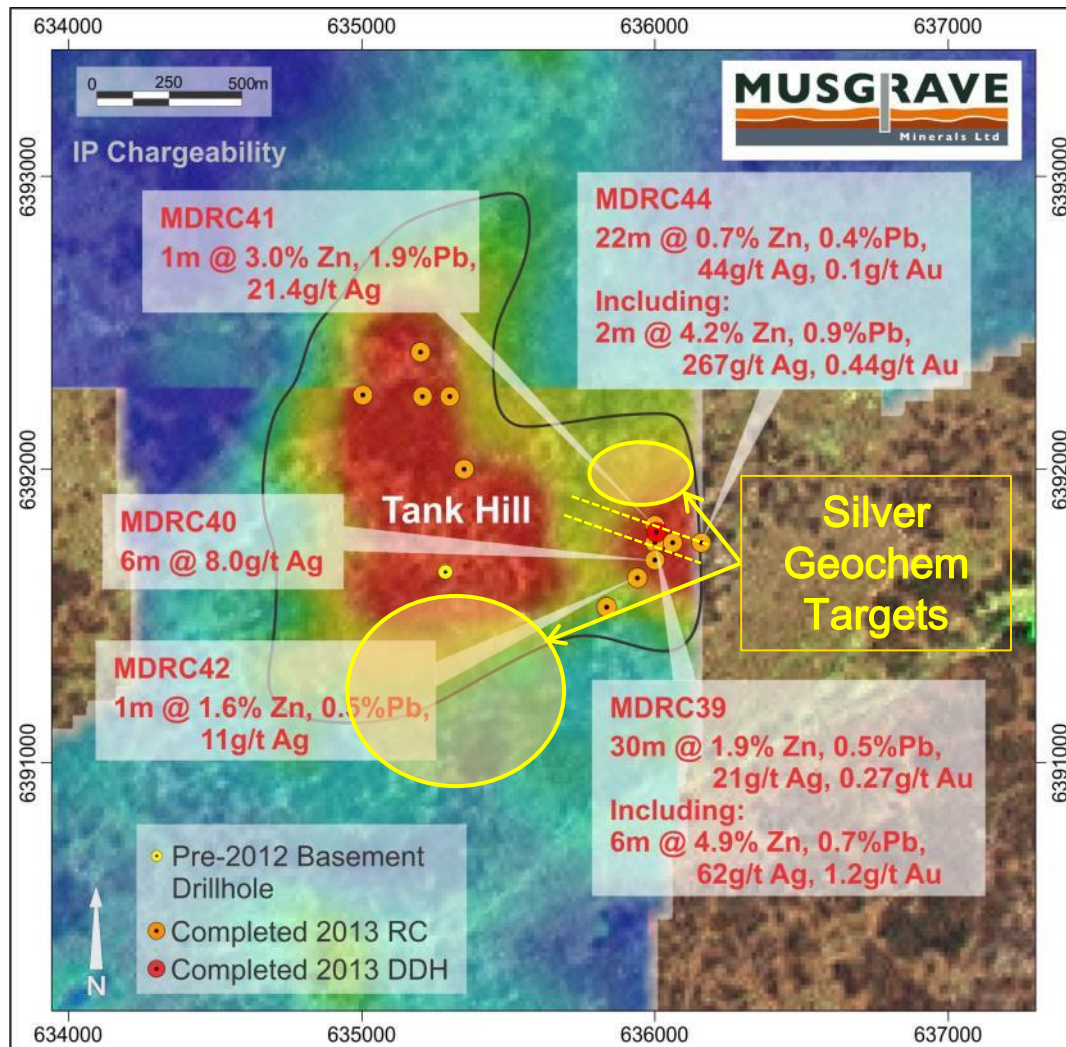
New Porphyry / Epithermal Field

- Many untested targets
 - Ag, Pb, Zn, Au, Mo & Graphite
 - New AEM & Geochem Targets
- Significant upside
- Tank Hill discovery zone only 5km from Menninnie Central



Tank Hill

- Large IP and Geochemical target
- MDRC39
6m @ 4.9% Zn, 62g/t Ag, 1.2g/t Au
- Strong regional pyrite, sericite, carbonate alteration
- New targets



New Menninnie Targets

- Multiple VTEM anomalies
 - Integrated with new surface Ag, Mo, Cu, Au geochemical data
- = New high priority targets

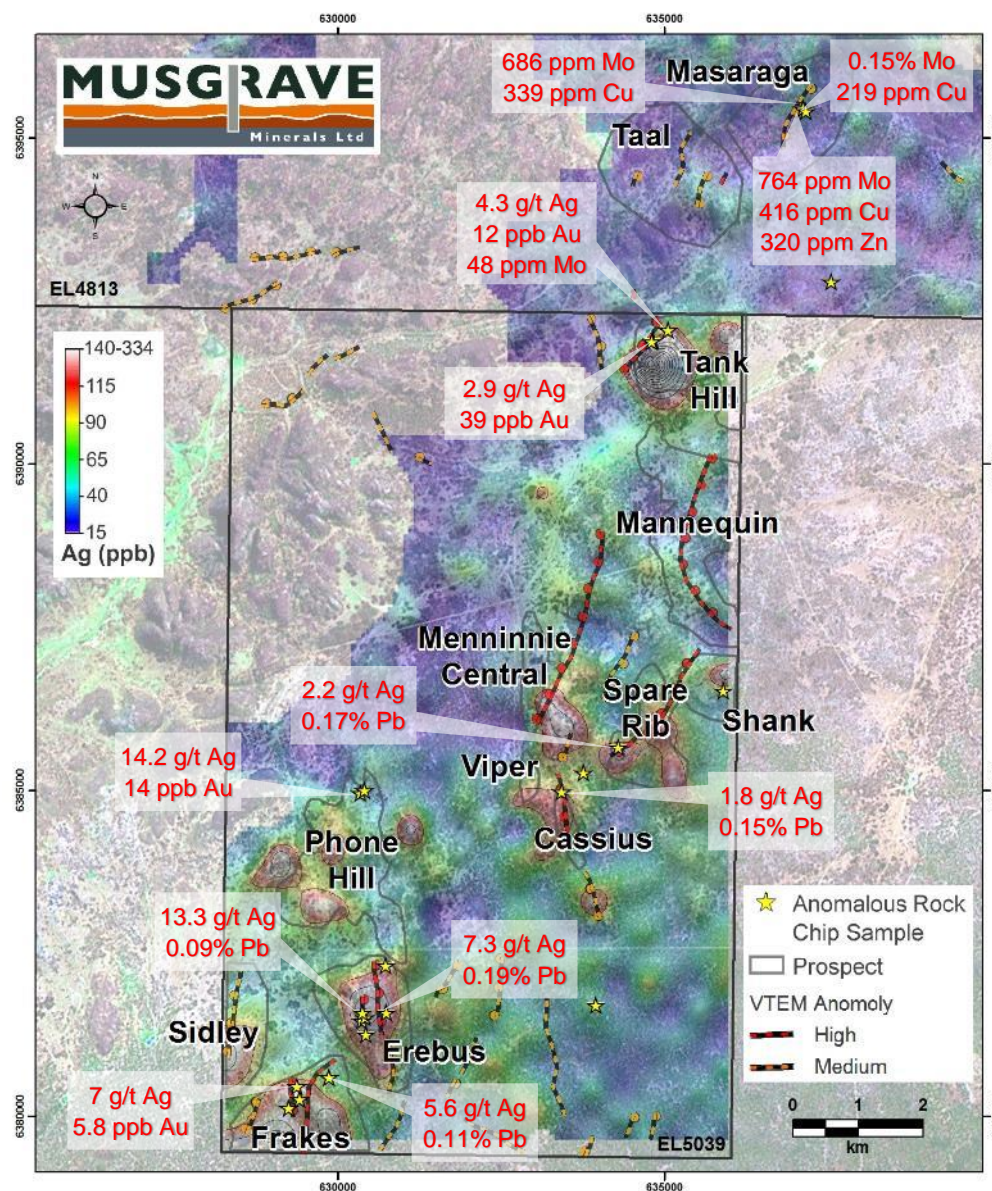
Surface rock-chips up to:

14.2g/t Ag

39ppb Au

0.15% Mo

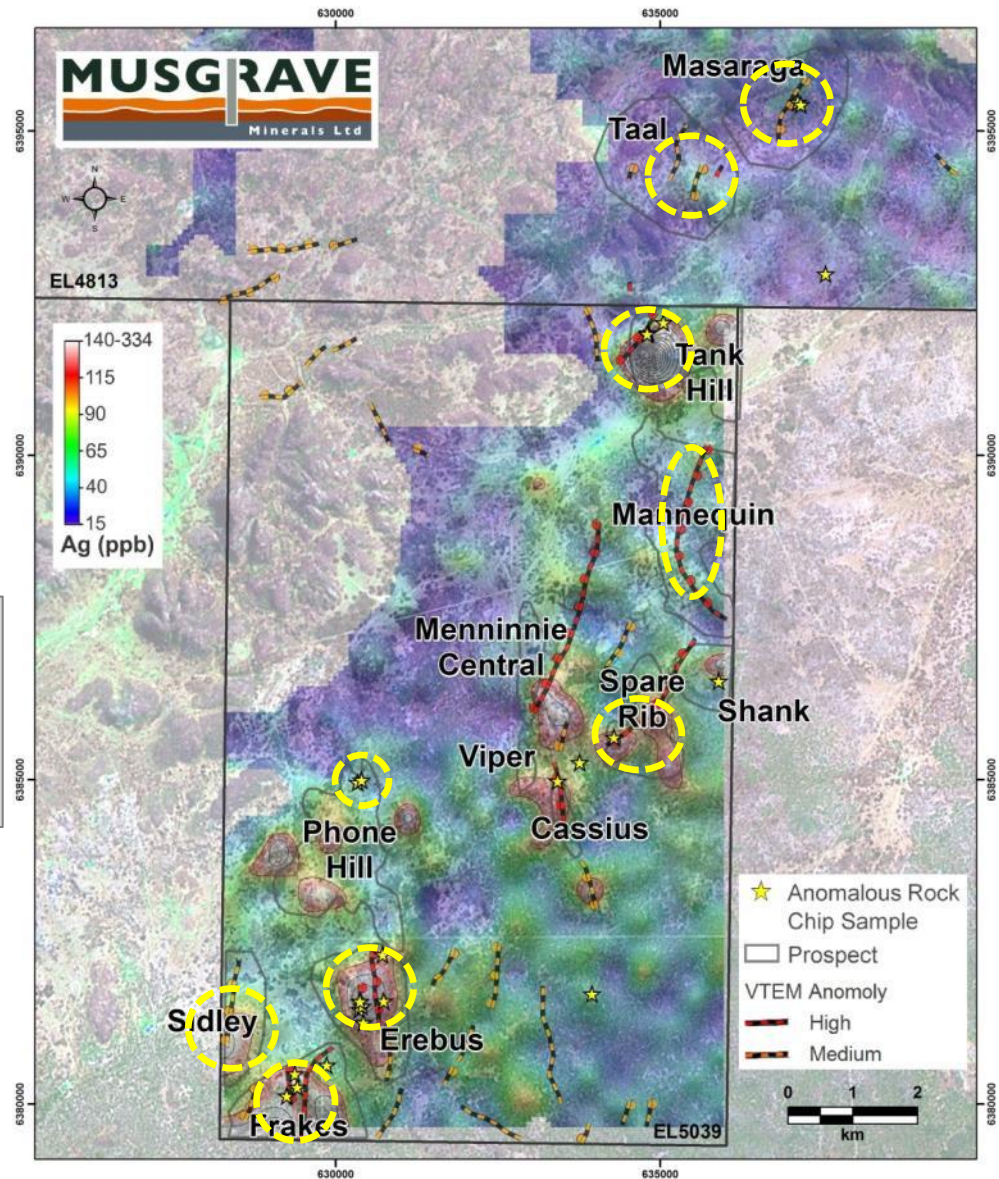
416ppm Cu



Porphyry / Epithermal Targets

- Drilling to commence in mid November on Porphyry / Epithermal Targets

 Aircore Drill Targets



Upcoming Exploration



| MUSGRAVE | Oct | Nov | Dec |
|-----------------------------|-----|-----|-----|
| Heritage Surveys | ✓ | ✓ | ✓ |
| Geological Mapping/Sampling | ✓ | ✓ | ✓ |
| Geochemistry | ✓ | ✓ | ✓ |
| Geophysics | ✓ | ✓ | |
| Drilling | | ✓ | |

| MENNINNIE | Oct | Nov | Dec |
|-----------------------------|-----|-----|-----|
| Planning & Approvals | ✓ | | |
| Geological Mapping/Sampling | ✓ | ✓ | |
| Geochemistry | ✓ | ✓ | |
| Drilling | | ✓ | ✓ |

Actively Exploring

For personal use only



Opportunity



- For personal use only
- ❑ In two very prospective under-explored regions, MGV has :
 - 1. Great land package – Musgrave (Ni-Cu-PGE's)
 - 2. Silver-Zinc-Lead-Gold opportunity – Menninnie Dam
 - 3. Excellent drill ready targets – currently drilling
 - 4. Significant brownfield & greenfield potential
 - 5. Strong financial position
 - 6. Experienced team and high quality register
 - 7. Significant upside – limited downside

Forward Looking Statements

This presentation has been prepared by Musgrave Minerals Ltd (MGV). The information contained in this presentation is a professional opinion only and is given in good faith. Certain information in this document has been derived from third parties and though Musgrave Minerals has no reason to believe that it is not accurate, reliable or complete, it has not been independently audited or verified by MGV.

This presentation is in summary form and does not purport to be all inclusive or complete. Recipients should conduct their own investigations and perform their own analysis in order to satisfy themselves as to the accuracy and completeness of the information, statements and opinions contained.

This is for information purposes only. Neither this nor the information contained in it constitutes an offer, invitation, solicitation or recommendation in relation to the purchase or sale of MGV shares in any jurisdiction. This does not constitute investment advice and has been prepared without taking into account the recipient's investment objectives, financial circumstances or particular needs and the opinions and recommendations in this presentation are not intended to represent recommendations of particular investments to particular persons. Recipients should seek professional advice when deciding if an investment is appropriate. All securities transactions involve risks, which include (among others) the risk of adverse or unanticipated market, financial or political developments.

To the fullest extent permitted by law, MGV, its officers, employees, related bodies corporate, agents and advisers do not make any representation or warranty, express or implied, as to the currency, accuracy, reliability or completeness of any information, statements, opinions, estimates, forecasts or other representations contained in this presentation. No responsibility for any errors or omissions from this arising out of negligence or otherwise is accepted.

Any forward-looking statements included in this document involve subjective judgment and analysis and are subject to uncertainties, risks and contingencies, many of which are outside the control of, and may be unknown to, MGV. In particular, they speak only as of the date of this document, they assume the success of MGV's strategies, and they are subject to significant regulatory, business, competitive and economic uncertainties and risks. Actual future events may vary materially from the forward-looking statements and the assumptions on which the forward-looking statements are based. Recipients of this document (Recipients) are cautioned to not place undue reliance on such forward-looking statements.

Competent Person's Statement

The information in this presentation that relates to Exploration Results, Mineral Resources or Ore Reserves is based on information compiled and thoroughly reviewed by Mr Robert Waugh. Mr Waugh is a Fellow of the Australasian Institute of Mining and Metallurgy (FAusIMM) and a Member of the Australian Institute of Geoscientists (MAIG). Mr Waugh is Managing Director of Musgrave Minerals Ltd. Mr Waugh has sufficient industry experience to qualify as a Competent Person as defined in the 2012 Edition of the 'Australasian Code for Reporting of Exploration Results, Mineral Resources and Ore Reserves'. Mr Waugh consents to the inclusion in the report of the matters based on their information in the form and context in which it appears.

