

For personal use only



Sixth Annual General Meeting

Perth 15 November 2013

ASX: SLR

ABN: 38 108 779 782

www.silverlakeresources.com.au

Agenda



1. Introduction
2. Chairman's address
3. Financial statements
4. Resolution 1: To adopt remuneration report
5. Resolution 2: To re-elect Mr Peter Johnston as a director
6. Resolution 3: To re-elect Mr Christopher Banasik as a director
7. Resolution 4: To elect Mr Luke Tonkin as director
8. Resolution 5: Grant of incentive options to Mr Luke Tonkin
9. Managing Director's presentation
10. Refreshments

For personal use only



Resolutions & Valid Proxy Votes



Resolution 1: To adopt remuneration report

Resolution 2: To re-elect Mr Peter Johnston as a director

Resolution 3: To re-elect Mr Christopher Banasik as a director

Resolution 4: To elect Mr Luke Tonkin as a director

Resolution 5: Grant of incentive options to Mr Luke Tonkin

Validly Appointed Proxies		For		Against		Open		Abstain
Resolution 1	143,486,057	95%	4,781,092	3%	2,404,678	2%	28,539,477	
Resolution 2	163,472,010	93%	9,228,447	5%	2,476,421	2%	4,034,426	
Resolution 3	168,991,626	97%	3,693,885	2%	2,478,471	1%	4,047,322	
Resolution 4	172,553,593	96%	4,054,877	2%	2,476,421	2%	126,413	
Resolution 5	132,649,846	83%	25,306,118	16%	2,393,379	1%	18,861,962	



For personal use only

For personal use only



Company Presentation

Les Davis - Managing Director

ASX: SLR

ABN: 38 108 779 782

www.silverlakeresources.com.au

Important Notice and Disclaimer



Disclaimer - Silver Lake Resources Limited ("Silver Lake" or "the Company") has prepared this presentation based on information available to it. No representation or warranty, express or implied, is made as to the fairness, accuracy, completeness or correctness of the information, opinions and conclusions contained in this presentation. To the maximum extent permitted by law, none of Silver Lake, its directors, employees or agents, advisers, nor any other person accepts any liability, including, without limitation, any liability arising from fault or negligence on the part of any of them or any other person, for any loss arising from the use of this presentation or its contents or otherwise arising in connection with it.

This presentation contains general and background information about Silver Lake's activities current as at the date of the presentation and should not be considered to be comprehensive or to comprise all the information that an investor should consider when making an investment decision. The information is provided in summary form, has not been independently verified, and should not be considered to be comprehensive or complete. It should be read solely in conjunction with the oral briefing provided by Silver Lake and all other documents provided to you by Silver Lake. Silver Lake is not responsible for providing updated information and assumes no responsibility to do so.

All dollar terms expressed in this presentation are in Australian dollars unless otherwise stated.

No offer - This presentation is not an offer, invitation, solicitation or other recommendation with respect to the subscription for, purchase or sale of any security, and neither this presentation nor anything in it shall form the basis of any contract or commitment whatsoever.

Forward looking statements - This presentation may contain forward looking statements that are subject to risk factors associated with gold exploration, mining and production businesses. It is believed that the expectations reflected in these statements are reasonable but they may be affected by a variety of variables and changes in underlying assumptions which could cause actual results or trends to differ materially, including but not limited to price fluctuations, actual demand, currency fluctuations, drilling and production results, reserve estimations, loss of market, industry competition, environmental risks, physical risks, legislative, fiscal and regulatory changes, economic and financial market conditions in various countries and regions, political risks, project delay or advancement, approvals and cost estimates.

Forward-looking statements, including projections, forecasts and estimates, are provided as a general guide only and should not be relied on as an indication or guarantee of future performance and involve known and unknown risks, uncertainties and other factors, many of which are outside the control of Silver Lake. Past performance is not necessarily a guide to future performance and no representation or warranty is made as to the likelihood of achievement or reasonableness of any forward looking statements or other forecast.

No investment advice - This presentation is not financial product, investment advice or a recommendation to acquire Silver Lake securities and has been prepared without taking into account the objectives, financial situation or needs of individuals. Before making an investment decision prospective investors should consider the appropriateness of the information having regard to their own objectives, financial situation and needs, and seek legal, taxation and financial advice appropriate to their jurisdiction and circumstances. Silver Lake is not licensed to provide financial product advice in respect of its securities or any other financial products. Cooling off rights do not apply to the acquisition of Silver Lake securities. Silver Lake assumes that the recipient is capable of making its own independent assessment, without reliance on this document, of the information and any potential investment and will conduct its own investigation.

The information in this Presentation remains subject to change without notice. Silver Lake reserves the right to withdraw or vary the timetable for the Offer and the Share Purchase Plan without notice.

Competent Person - The information in this presentation that relates to mineral resources, mineral reserves and exploration results are based on information compiled by Mr Christopher Banasik who is a Member of the Australasian Institute of Mining and Metallurgy. Any statement herein, direct or implied, as to a potential gold deposit is conceptual in nature and a reference to the targeted gold potential and not to any JORC compliant Mineral Resource. Mr Banasik is a full time employee of Silver Lake Resources Ltd, and has sufficient experience which is relevant to the style of mineralisation under consideration to qualify as a Competent Person as defined in the 2004 edition of the JORC Code. Mr Banasik has given his consent to the inclusion in this presentation of the matters based on the information in the form and context in which it appears.

The information in this presentation that relates to exploration and production targets refers to targets that are conceptual in nature, where there has been insufficient exploration to define a Mineral Resource and it is uncertain if further exploration will result in the determination of a Mineral Resource.

The information on exploration targets in this presentation are based on a conceptual range of targets as follows:

Tonnage range:	80 million to 120 million tonnes
Grade range:	~3 g/t Au
Ounces:	7 million to 10 million



Company Overview



ASX Code: SLR

Ordinary Shares	437.6 million
Outstanding Options ¹	2.0 million
Market Cap: A\$0.70 per share	A\$306 Million
Finance - 30 September 2013	A\$25.6M cash & bullion
Debt - 1 November 2013	A\$16.0M
Range (12 month)	A\$3.60 - A\$0.51
Average Daily Volume	4.5M shares (\$3.2M)

Directors

Paul Chapman	Chairman
Les Davis	Managing Director
Luke Tonkin	Director of Operations
Chris Banasik	Director Exploration and Geology
David Griffiths	Non-Executive Director
Peter Johnston	Non-Executive Director
Brian Kennedy	Non-Executive Director

Investor	Shares (M)	%
Directors	27.9	6.4
Van Eck	30.4	7.0
Baker Steel	20.8	4.8
Sprott Asset Management	11.1	2.5
Top 20 + Directors	196.7	45.0





¹: Subject to resolution 5 at SLR 2013 Annual General Meeting



A Quality, Diversified, Western Australian Portfolio

“5,000 sqkm of highly prospective under explored tenements containing gold, silver, copper & zinc”
 “3 mining operations and 3 operating processing facilities with total milling capacity of >3.0Mt ore p.a.”

For personal use only

-  Producing Assets
-  Exploration & Development

Murchison (100%)

- 1.9Moz gold resource¹
- 0.4Moz ore reserve¹
- 1.2Mtpa processing facility
- 4 open pits in production
- FY14 gold production guidance: 60-70koz

Eleya Complex (100%)

- Hollandaire – high grade copper / gold discovery
- Highly prospective for gold & base metals
- 39kt Copper resource¹

Great Southern (100%)

- 0.9Moz gold resource¹
- 0.5Moz ore reserve¹
- Potential third production centre
- Gold, Copper & Silver
- Targeted as Silver Lake’s third “mining centre”

Mount Monger (100%)

- 3.6Moz gold resource^{1,2}
- 0.8Moz ore reserve^{1,2}
- Multiple underground mines and 1 open pit mine in production
- 2 processing facilities with 2.0Mtpa capacity
- Expected mine life > 10 years
- FY14 gold production guidance: 120-130koz

1: Refer to appendix - JORC Resource & Reserve Inventory
 2: Mount Monger is inclusive of Aldiss



FY14 Budget & Strategy - A\$1,350 gold price



“Restructured the business to protect the downside and maintained flexibility to capture the upside”

■ Maximise Cashflow:

- improve balance sheet
- lower cost base

■ Defer capital:

- Murchison underground development
- no expansion projects

■ Cost reductions:

- directors & staff salary reductions
- organisational restructure
- contract renegotiations

■ Mount Monger mill feed:

- Daisy Complex, Cock-eyed Bob, Maxwells & Stockpiles
- 120,000 to 130,000 ounces

■ Murchison mill feed:

- multiple open pits
- 60,000 to 70,000 ounces

■ Exploration:

- A\$7.4 million
- focusing on short-term, high impact outcomes



“Solid start to FY14: Year to date gold poured totals 94,000 ounces¹”



0.5 Million Ounce Milestone



“Next week Silver Lake will pour its 500,000th ounce since maiden gold pour in April 2008”



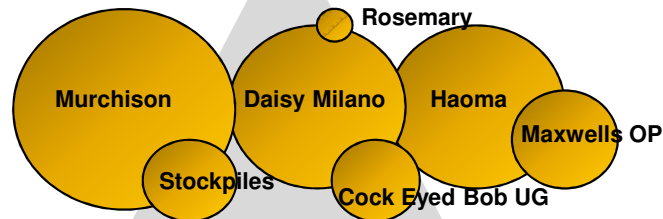
For personal use only



Pipeline Of Growth Projects¹

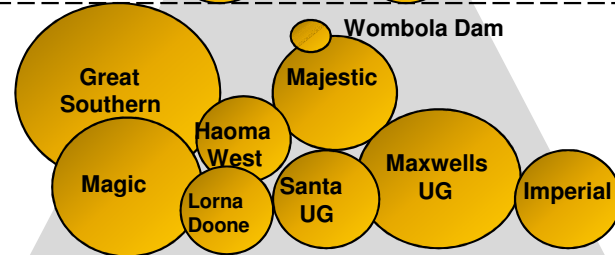
For personal use only

Producing



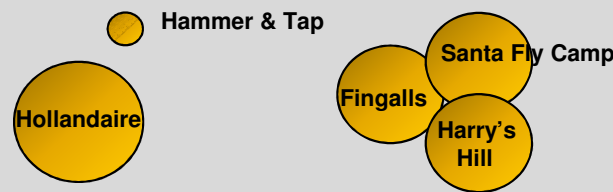
Producing 200,000 ounces per annum

Development

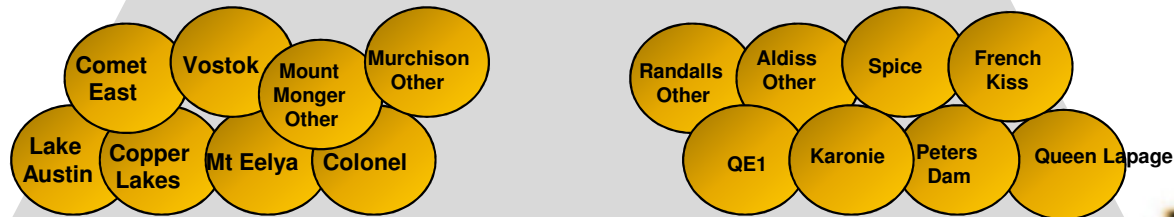


Projects ready to advance to production in an improved & sustained gold price environment

Advanced Exploration

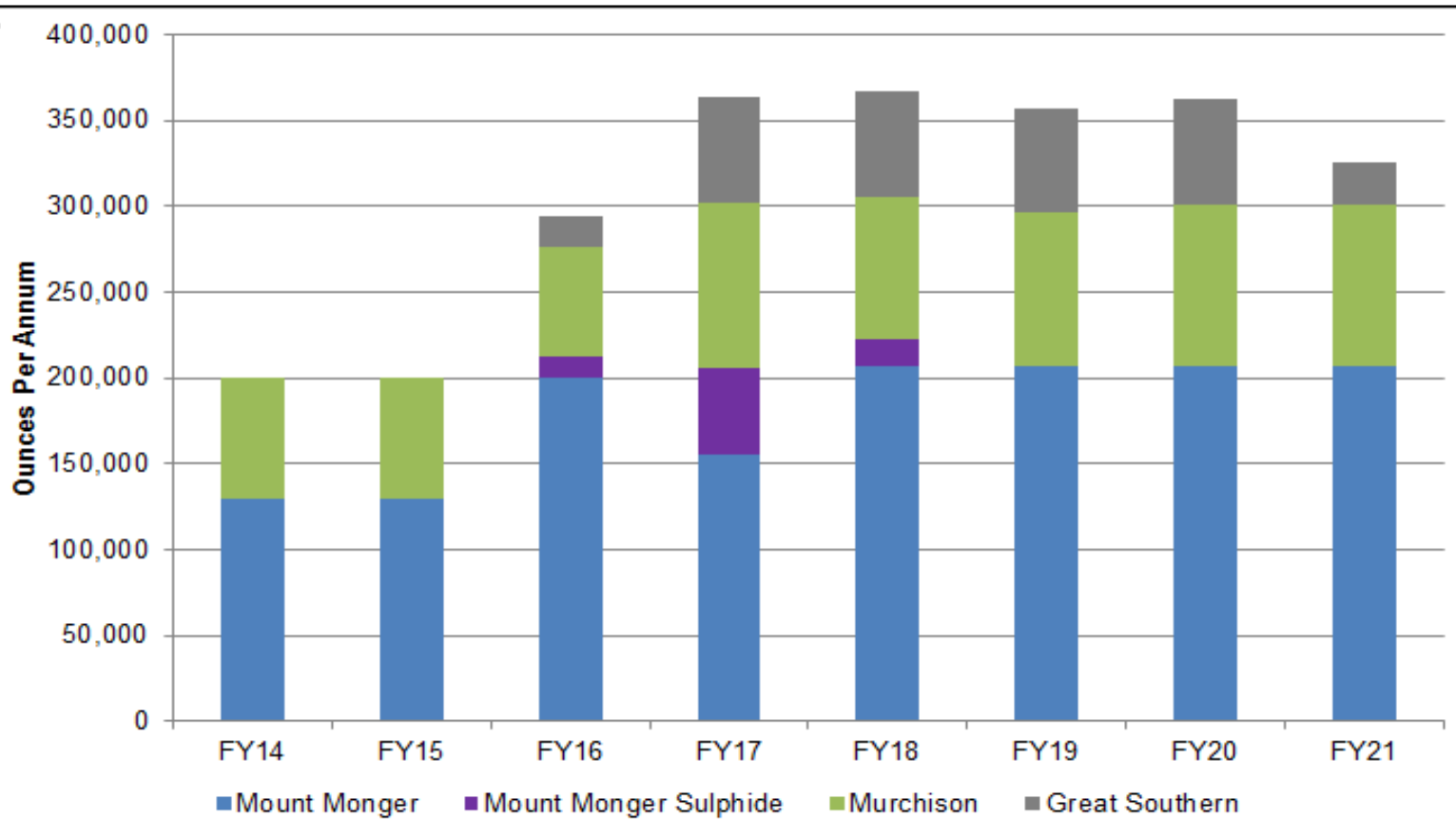


Greenfields Exploration



¹ Size of bubble represents potential minable inventory
Refer to slide 2 - Forward looking statements

Growth Targets & Timing^{1,2,3}



Average LOM All In Sustaining Cash Cost: (AISC) Mount Monger A\$1,050, Murchison A\$1,160, Great Southern A\$1,000 (excludes by product credits)

AISC includes Opex, Royalties, Sustaining Capex, Enhancing Project Capex, Exploration & Corporate Overheads

1: Refer to slide 2 - Forward looking statements

2: FY14 guidance as issued = 180 to 200koz

3: The above assumptions are based on Silver Lake's life of mine plans and include ore reserves, measured & indicated resources and work programmes to convert inferred resources into measured & indicated resources.



For personal use only

Short Term Opportunities



“Operations are sustainable in the lower gold price environment, however several expansion and development options exist should the gold price experience sustained improvement”

■ Current budget - A\$1,350/oz gold price environment:

- deferral of capital expenditure
- deferral of organic expansion projects
- treating stockpiles to reduce spend in-ground
- prudent exploration spend focusing on short-term high impact outcomes

■ Improved and sustained gold price environment:

- commence production from Wombola Dam with minimal lead time
- develop Majestic and Imperial deposits
- review underground development in the Murchison
- enhance exploration efforts:
 - Lorna Doone
 - Randalls BIF
 - Great Southern



For personal use only



Mount Monger

ASX: SLR

ABN: 38 108 779 782

www.silverlakeresources.com.au

Mount Monger Operations - Overview



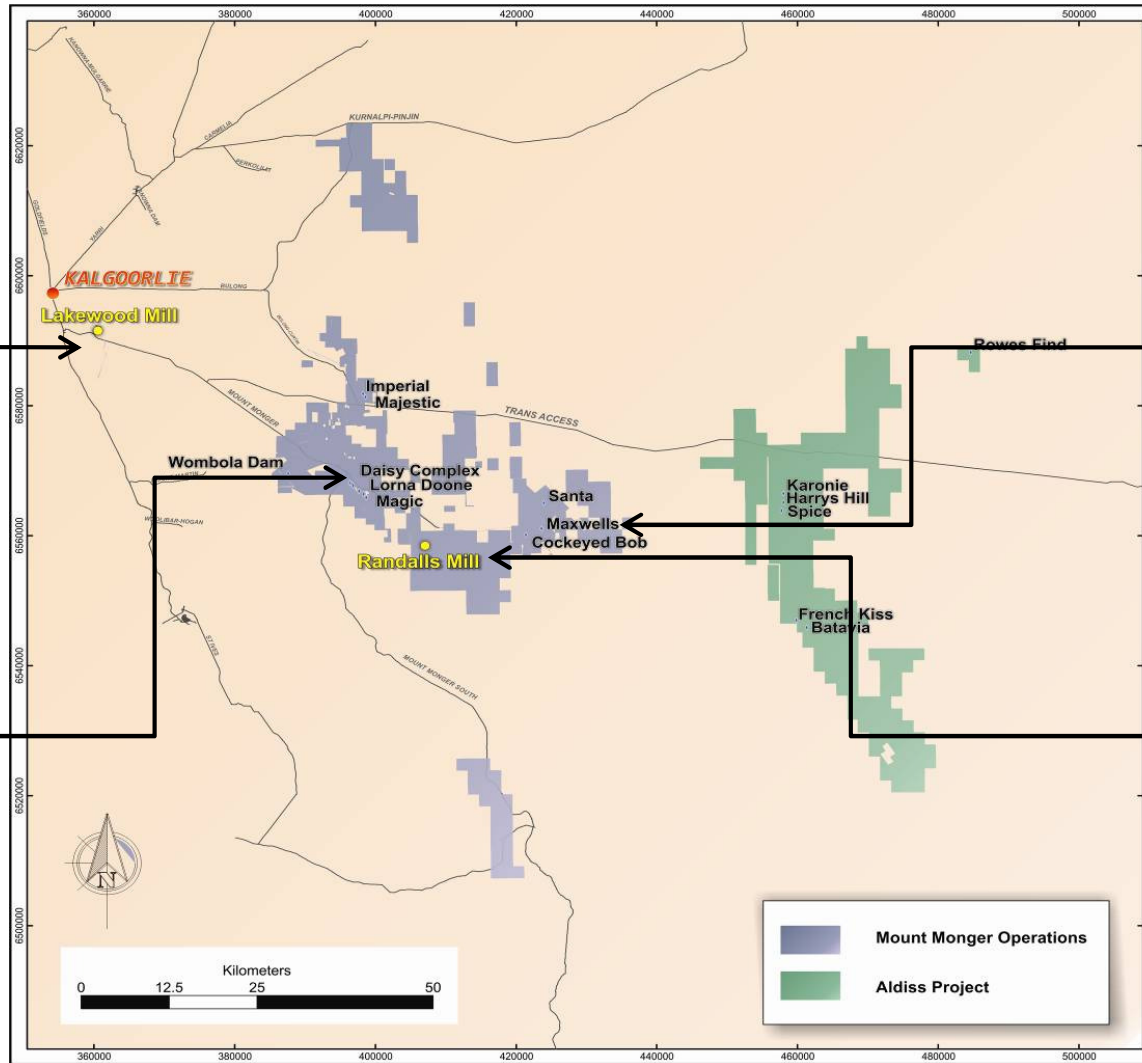
For personal use only



Lakewood Mill (800-900kt pa)



Daisy Complex Portal



Maxwells Open Pit



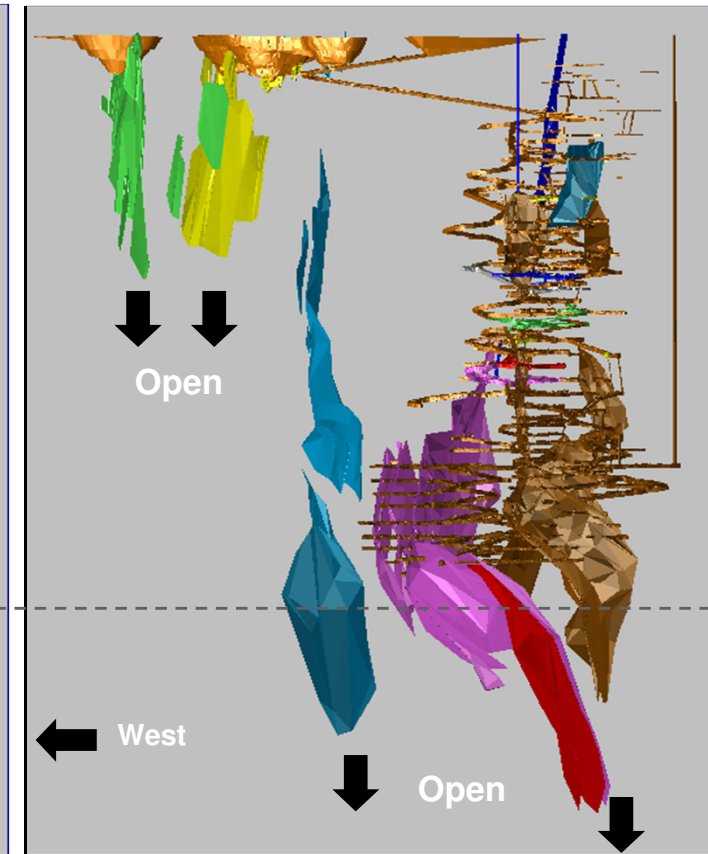
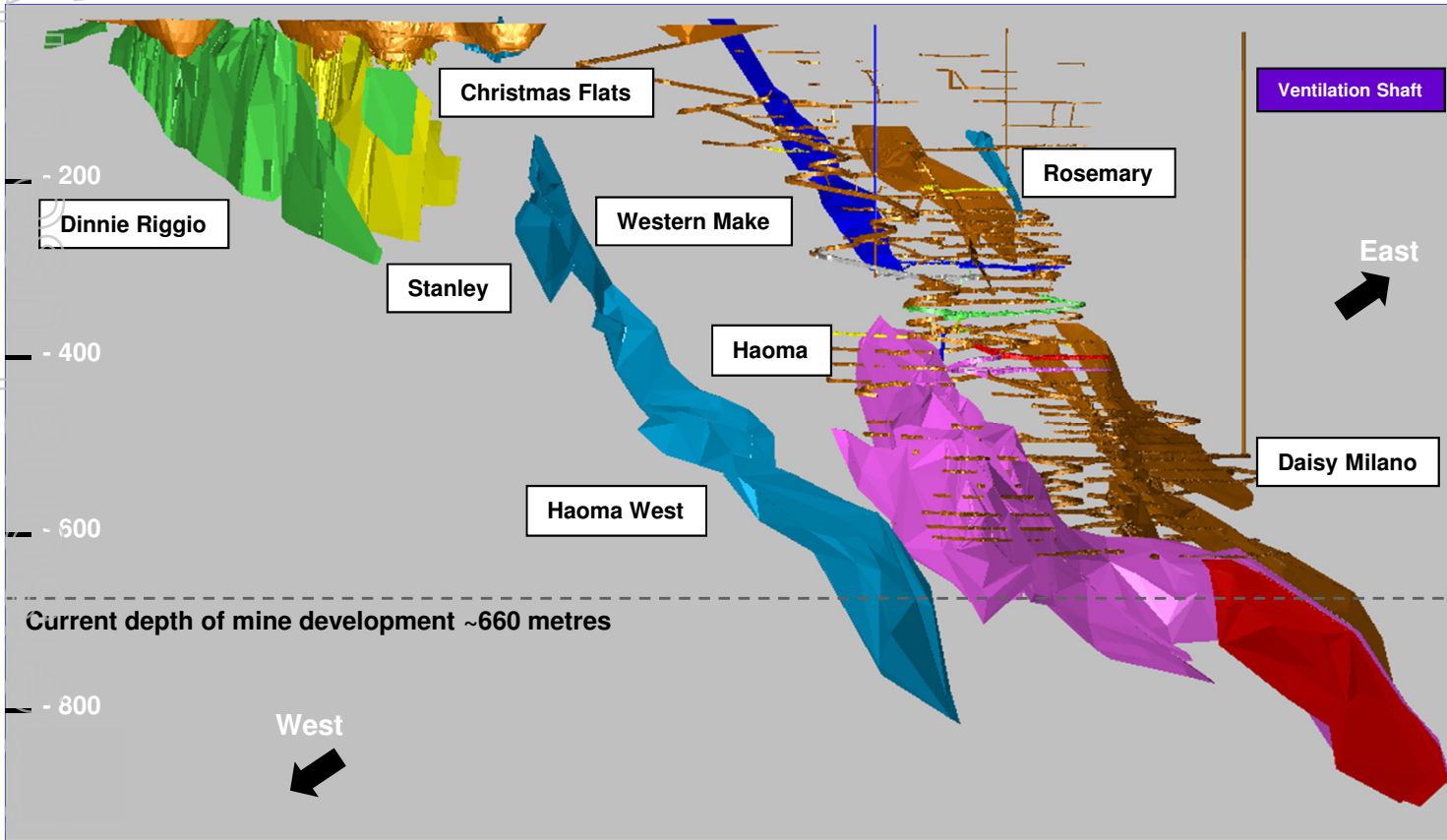
Randalls Mill (1.1Mt - 1.2Mt pa)



Daisy Complex - Core Asset



Since Inception to October 2013: 2.3 million tonnes at 7.4 g/t Au for 550koz



All accessible from same infrastructure containing 1.4Moz of resource
 Silver Lake production 2007 - 2013: 1.87mt at 6.5 g/t Au for 390koz
 Historical resource to reserve conversion rate ~80%

Multiple mines & structures - all open at depth

Current endowment 2,000 to 3,000 ounces per vertical metre

Mining rate: ~360,000 tonnes per annum



Magic Deposit

■ Magic Deposit:

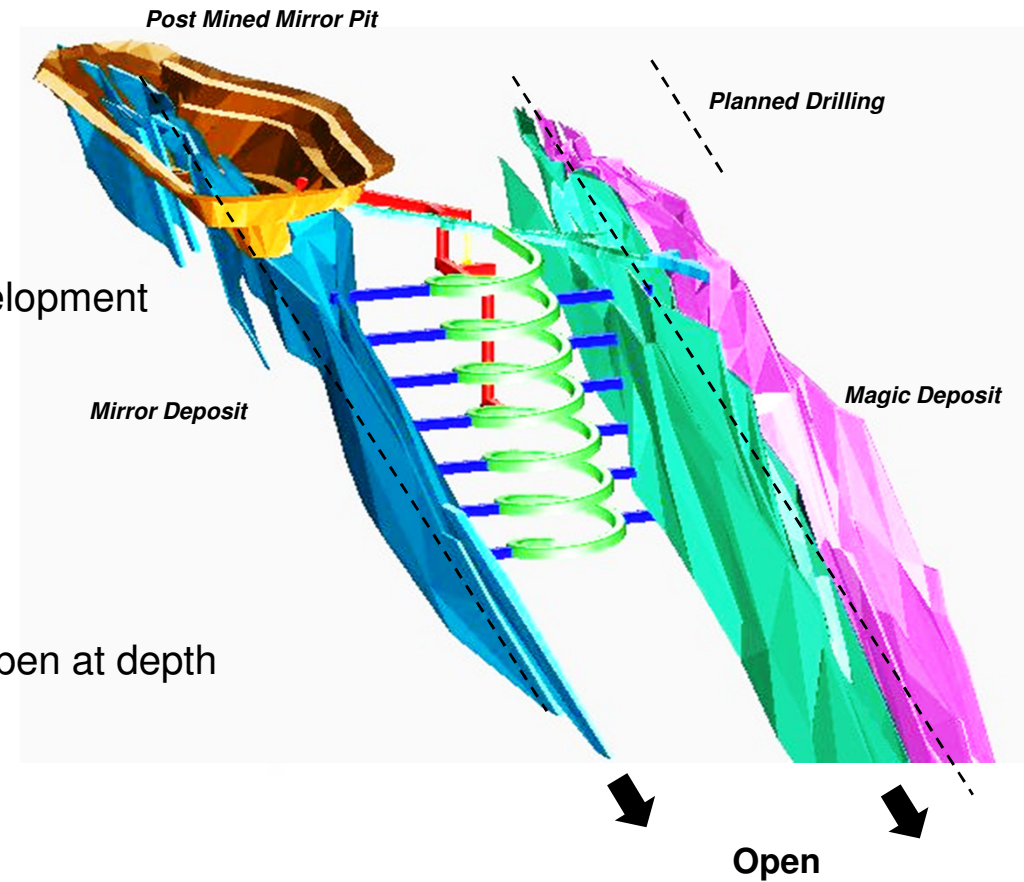
- planned underground mine, bulk mining method
- requires finalisation of metallurgical test work
- preliminary test work 2 oz per tonne concentrate
- A\$600k drilling planned next year
- A\$20M for floatation circuit & pre-production mine development
- production planned for April 2016

■ Mine design complete:

- base case: 690kt at 6.9 g/t Au = 140,000 oz (contained)
- bulk mining method
- Resource: 256,500 oz¹
- further conversion to reserve highly likely and deposit open at depth
- multiple shear zones

■ Significant thick intersections:

- 11.0m at 59.4 g/t Au
- 8.3m at 44.0 g/t Au
- 4.2m at 42.6 g/t Au



For personal use only

1. Refer to Appendix - JORC Resource & Reserve Inventory



IGR Transaction



“Issues encountered but now addressed as Silver Lake integrated the Mount Monger operations. Material synergies captured as anticipated by Silver Lake management”

For personal use only

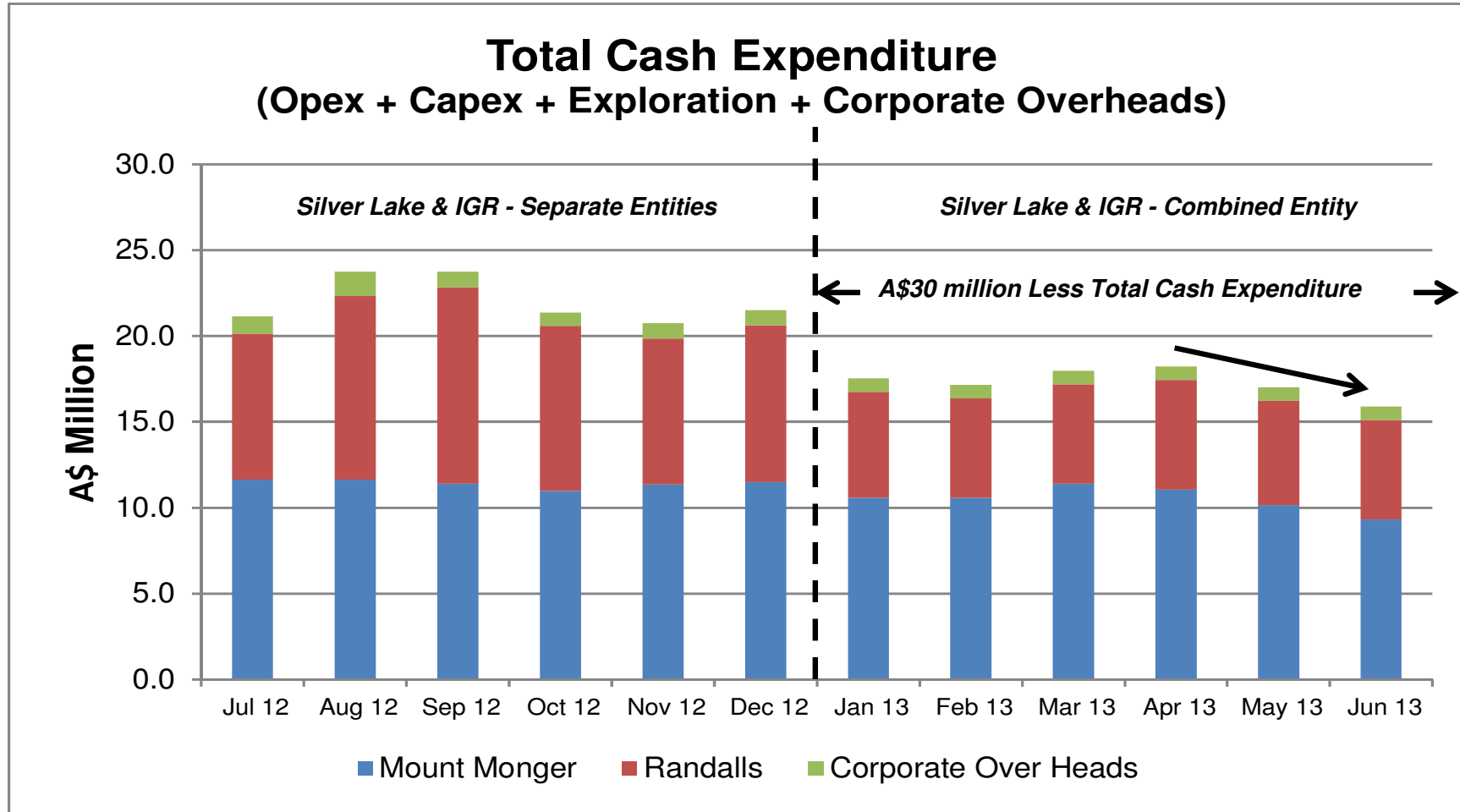
Issues Encountered	Business Integration and Silver Lake Improvements	Long Term Value Creation
Pre-completion guidance downgrade	Material synergies captured as anticipated	<div style="display: flex; align-items: center;"> <div style="background-color: #4F7942; color: white; padding: 5px; margin-right: 10px;">✓</div> <div>Reinterpreted high grade BIF shoots & implemented strategy to unlock potential of >30km of BIF host rock</div> </div>
Maxwells' reserve grade overcall in upper benches	Maxwells redesigned, 3.4 g/t Au in high grade shoots,	<div style="display: flex; align-items: center;"> <div style="background-color: #4F7942; color: white; padding: 5px; margin-right: 10px;">✓</div> <div>Recommended ore development at Cock-eyed Bob</div> </div>
Lower gold price since acquisition	Deferred capital and stockpiles reducing	<div style="display: flex; align-items: center;"> <div style="background-color: #4F7942; color: white; padding: 5px; margin-right: 10px;">✓</div> <div>Exploration upside</div> </div>
Impairment of goodwill & stockpiles	Randalls mill performing well	<div style="display: flex; align-items: center;"> <div style="background-color: #4F7942; color: white; padding: 5px; margin-right: 10px;">✓</div> <div>Moderate scale underground mines</div> </div>



Merger Synergies - They Are Real



For personal use only



Maxwells Deposit



Large scale open pit:

- 1.6km long
- planned to ~140 vertical metres depth
- Sep 2013 Qtr - high grade lodes 3.4 g/t Au

Potential underground mine

Drilling below planned pit shell includes:

- 3.4 metres at 12.8 g/t Au from 150 metres
- 4.6 metres at 21.4 g/t Au from 189 metres
- 3.0 metres at 39.2 g/t Au from 221 metres
- 2.2 metres at 9.9 g/t Au from 404 metres (deepest drill hole to date)



Maxwells Open Pit – Looking South (July 2013)



Nuggetty Ore From Maxwells Open Pit (May 2013)



Understanding BIF Hosted Gold At Randalls



For personal use only

Previous Interpretation:

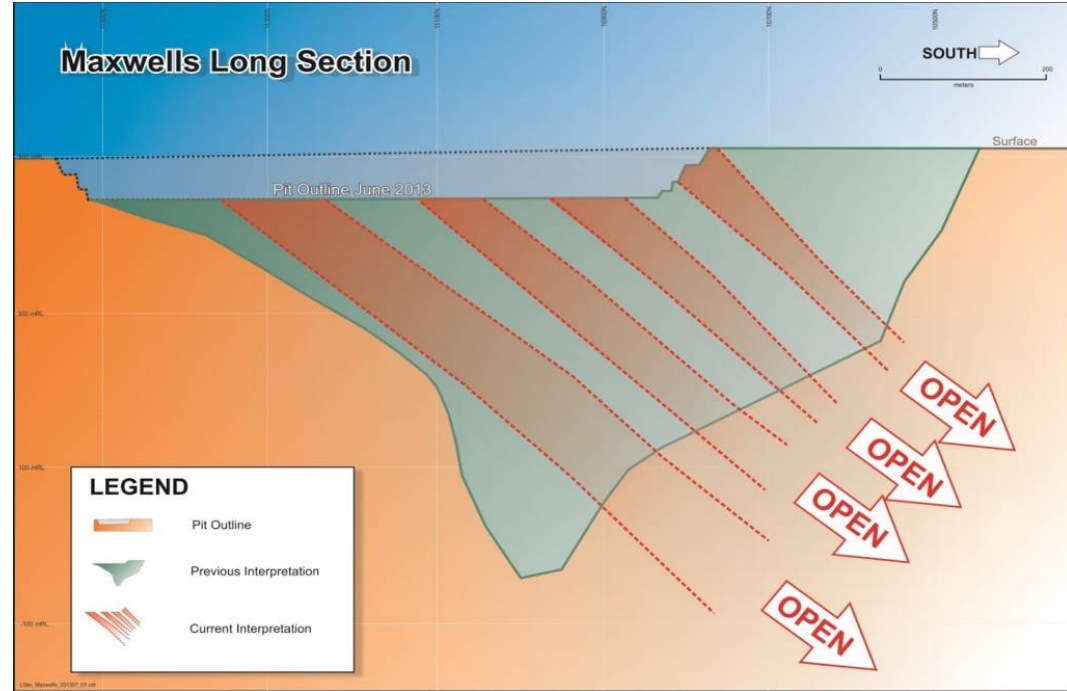
- Sub-vertical high grade BIF zones

Silver Lake Interpretation:

- south plunging high grade BIF zones

Impact:

- changes drilling orientation within BIF host rock
- changes mine design for future open pit & underground mines



Cock-eyed Bob - Ore Development

Recommended ore development July 2013:

- current decline development accesses 3 levels
- ore driving on 2 structures per level
- 1,200 meters of ore development to complete
- small mechanised mining fleet

Mining vs Drilling:

- less expensive than drilling
- provides better geological information
- pivotal part of Silver Lake strategy to understand & unlock the potential of BIF hosted gold deposits at Randalls

Deposit contains significant intercepts including:

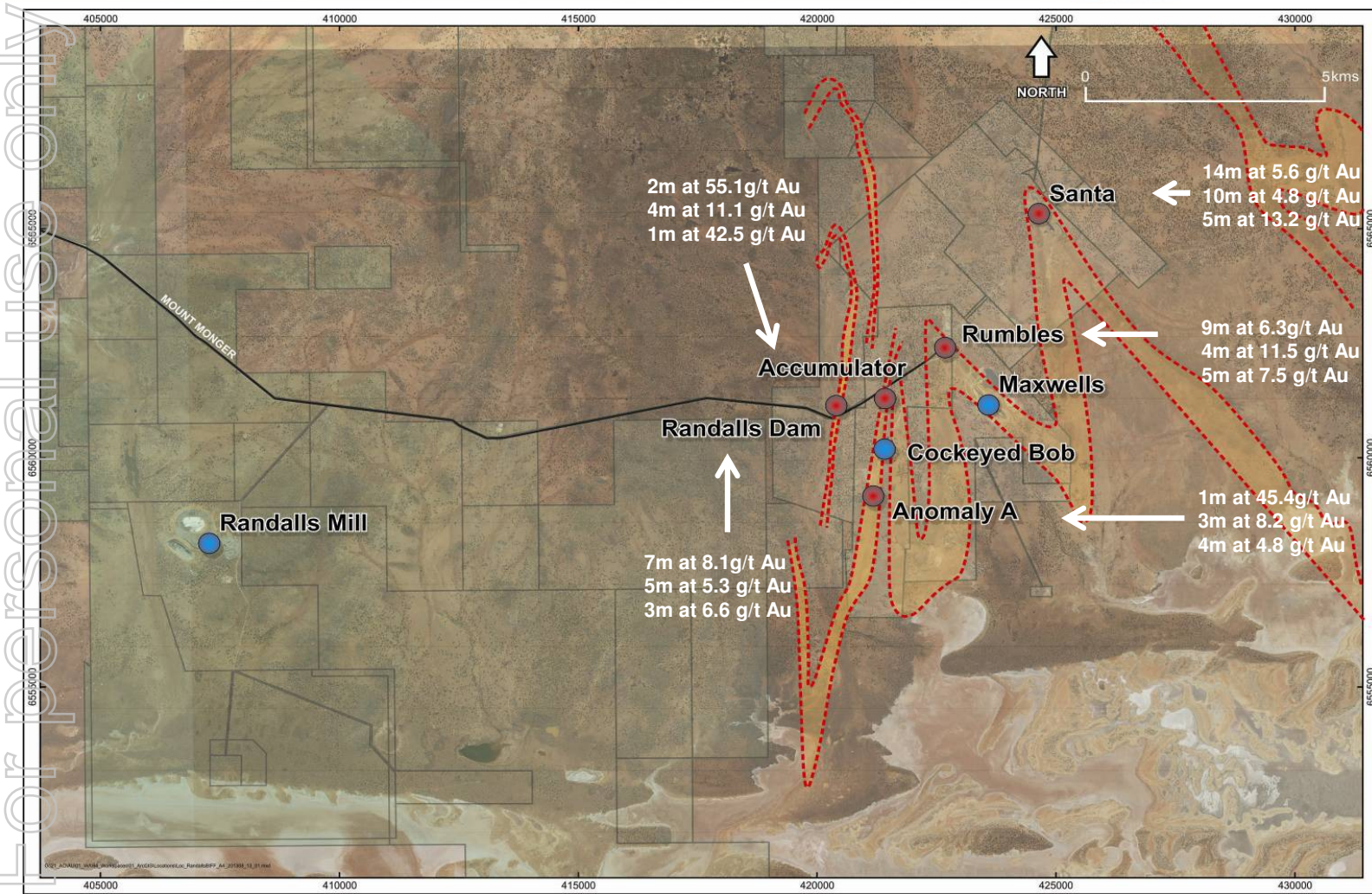
- 8.8 metres at 16.2 g/t Au from 324 metres
- 4.2 metres at 14.9 g/t Au from 305 metres
- 3.0 metres at 11.5 g/t Au from 166 metres



Cock-eyed Bob Portal



>30 km of BIF Host Rock at Randalls



Significant potential to identify additional ore sources



Majestic & Imperial



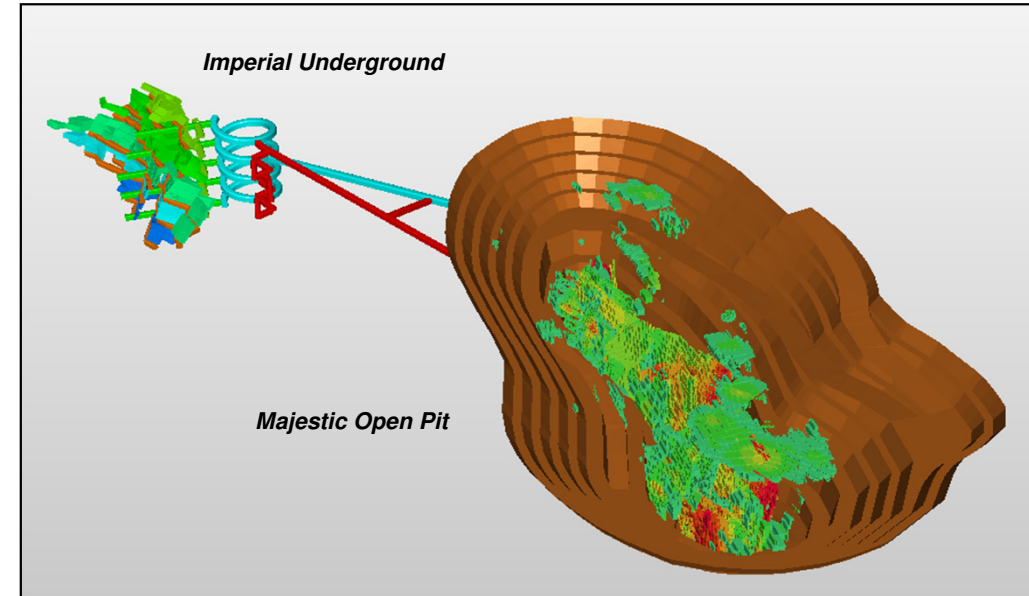
For personal use only

■ Majestic Deposit¹:

- open pit
- Reserve: 645kt at 2.40 g/t Au = 50,000 ounces
- pre-strip currently planned for July 2015

■ Imperial Deposit¹:

- high grade underground mine
- Reserve: 226kt at 7.6 g/t Au = 55,000 oz
- underground production planned for January 2017
- deposit open at depth



1. Silver Lake currently owns 85% of project
Refer to Appendix - JORC Resource & Reserve Inventory

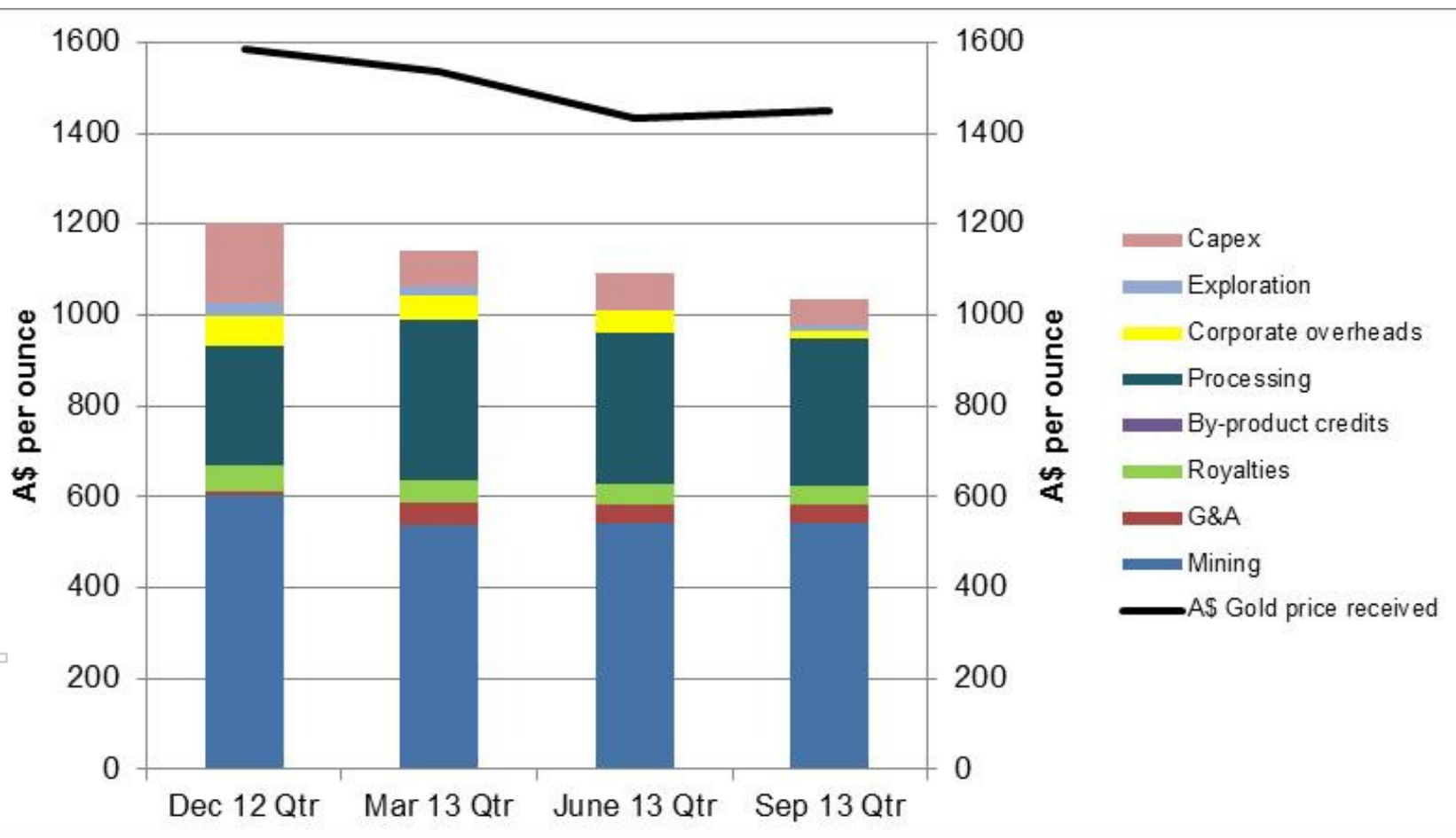


AISC¹ - Mount Monger



All in Sustaining Cash Cost at Mount Monger = A\$1,030 oz

Global average = US\$1,200 oz



1. Before non-cash items as detailed in September 2013 quarter report

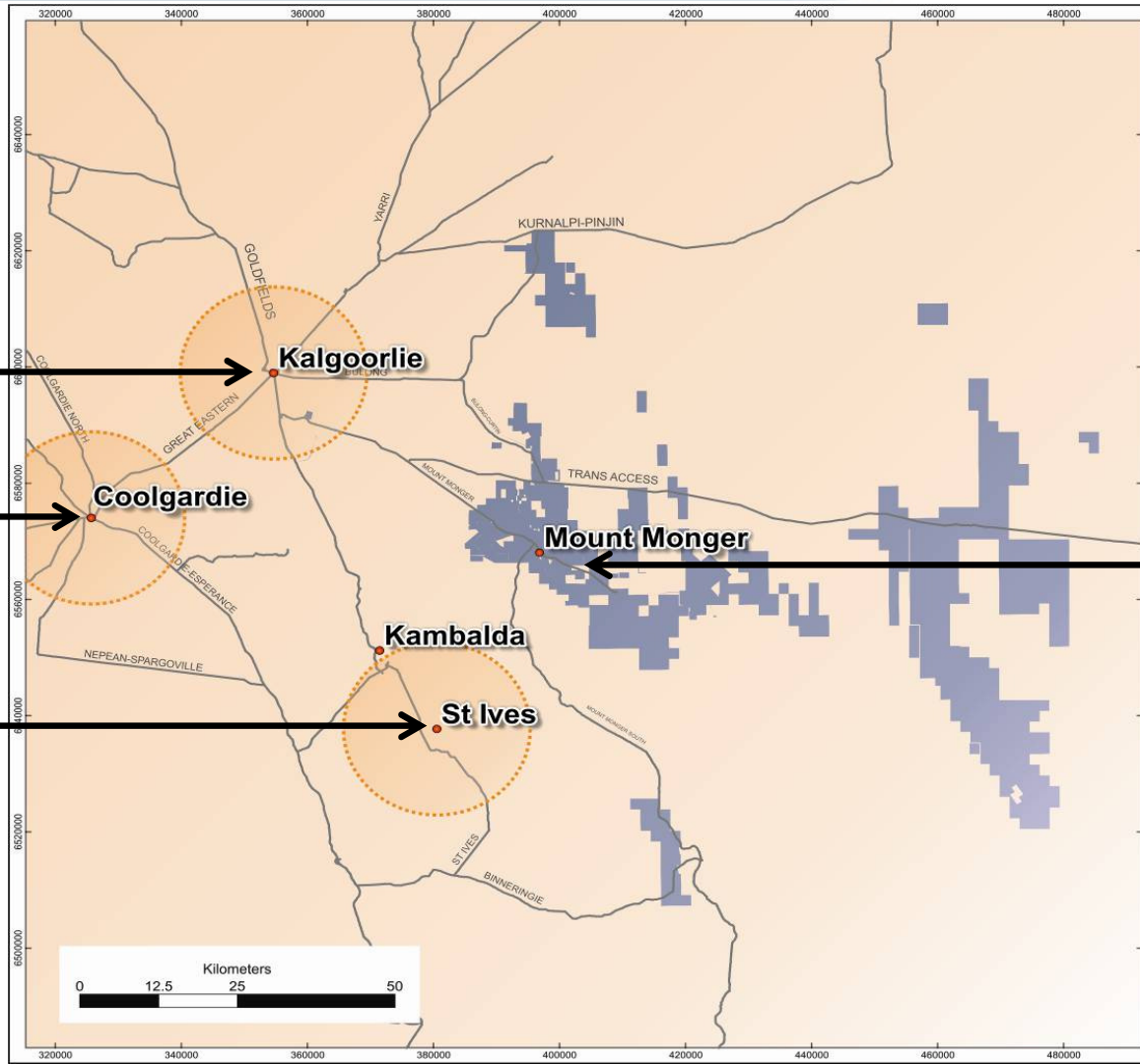


For personal use only

Can Mount Monger Become A Gold Camp?



For personal use only



Mount Monger Region
 Produced 0.9Moz c1897 -2007
 Produced 0.8Moz 2007 – 2013
 “Fragmented for 100 years
 now unified under Silver Lake
 ownership”

Golden Mile
 Produced 56Moz
 Res's/Res'v 12Moz

Produced 4Moz
 Res's/Res'v 2Moz

Produced 11Moz
 Res's/Res'v 5Moz

Produced 1.7Moz
 Res's/Res'v 3.6Moz¹



1. Refer to Appendix - JORC Resource & Reserve Inventory
 Other statistics quoted from public sources

For personal use only



Murchison

ASX: SLR

ABN: 38 108 779 782

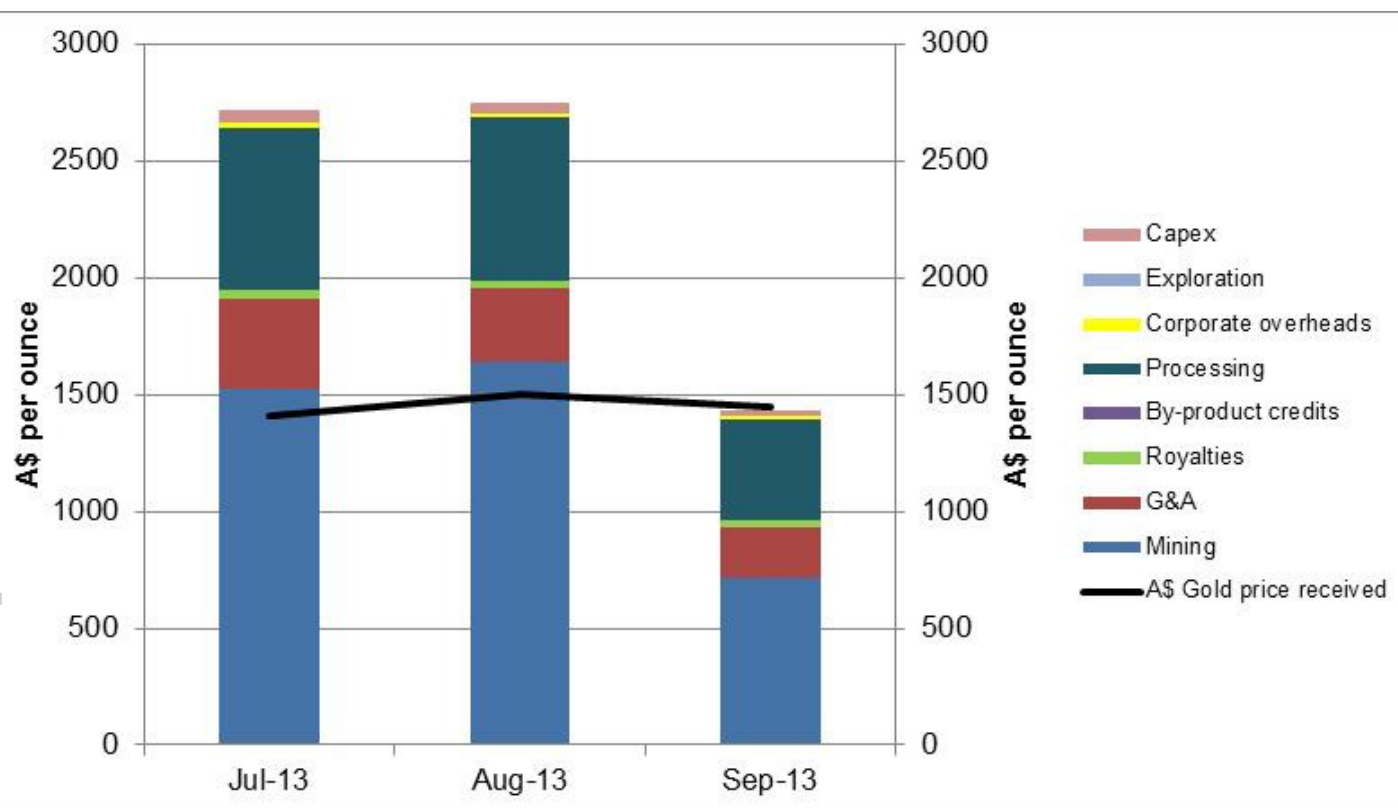
www.silverlakeresources.com.au

AISC^{1,2,3} - Murchison



September 2013 quarter all in sustaining cash cost = A\$2,119 oz with September 2013 = A\$1,432 oz

“A number of operational changes are in progress targeting further cost reductions and increased production however, the operation is under constant monthly review”



1. Before non cash items as detailed in September 2013 quarter report
2. Ounces sold in September 2013 totaled 6,331 thus reducing unit costs compared to July & August 2013 where ounces sold were lower and average strip ratios were higher
3. September 2013 quarter was the first quarter of commercial production



For personal use only

Murchison - Overview



For personal use only

■ Located 600 km north of Perth

■ Large project area:

- Tuckabianna, Comet & Moyagee
- 65 km strike on multiple shear zones

■ Historic production:

- 500,000 oz
- Silver Lake production commenced Feb 2013

■ Resources & Reserves¹:

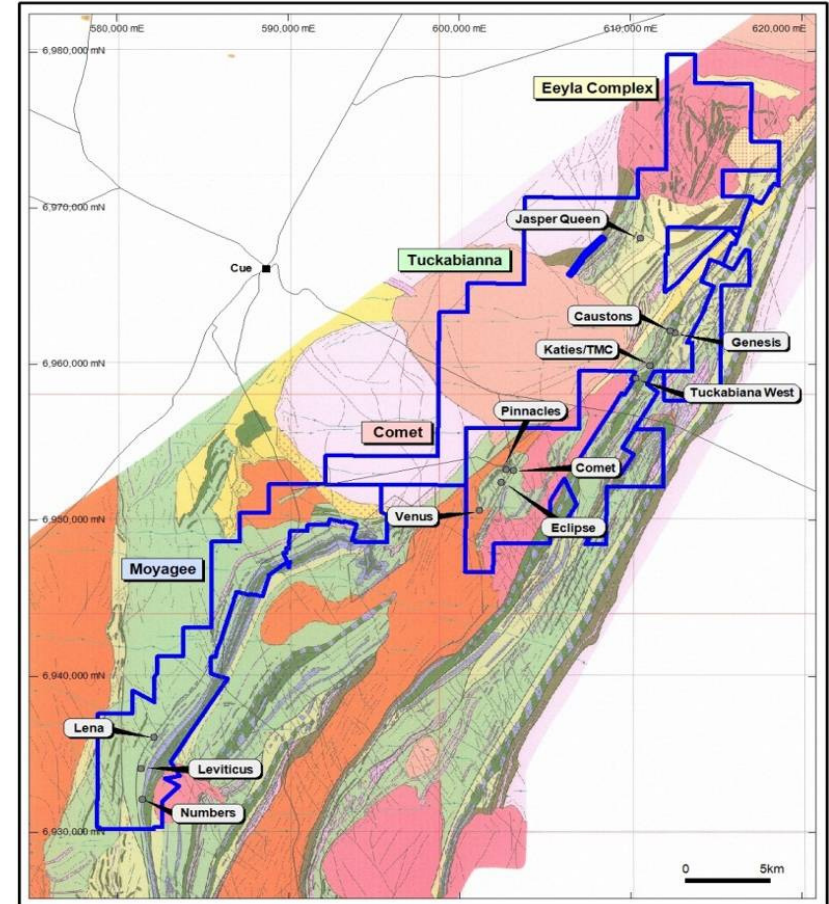
- Resource: 21.0 million tonnes at 2.8 g/t gold for 1.9Moz
- Reserve: 4.6 million tonnes at 2.7 g/t Au for 0.40Moz

■ Surrounded by multi million ounce gold deposits:

- Big Bell (4Moz), Great Fingall (2Moz), Hill 50 (2Moz)
- largest regional deposits were all underground mines

■ Target base case production plan:

- 60 - 90,000 oz per annum



1. Refer to Appendix - JORC Resource & Reserve Inventory



Murchison Gold Mill



■ Commissioning:

- commissioned successfully
- maiden gold pour mid Feb 2013

■ Crushing:

- 200tph
- capacity to double throughput with second cone

■ Plant Capacity:

- 1.2 mtpa
- currently operating above name plate

■ Design:

- allows for base metals circuit



Murchison Open Pit Mines



14 to develop:

- 4 completed
- 4 in progress
- 6 future pits to develop

Scale:

- combination of medium & small pits

Strip Ratio:

- 7:1 average over all 14 pits

For personal use only



Murchison Underground Mines



4 to develop:

- Caustons, Comet, Tuckabianna West & Lena

Accessed via 1 in 7 Decline ramp:

- 5.0 metres wide & 5.5 metres high

Level spacing:

- 20 vertical metres

Ore driving:

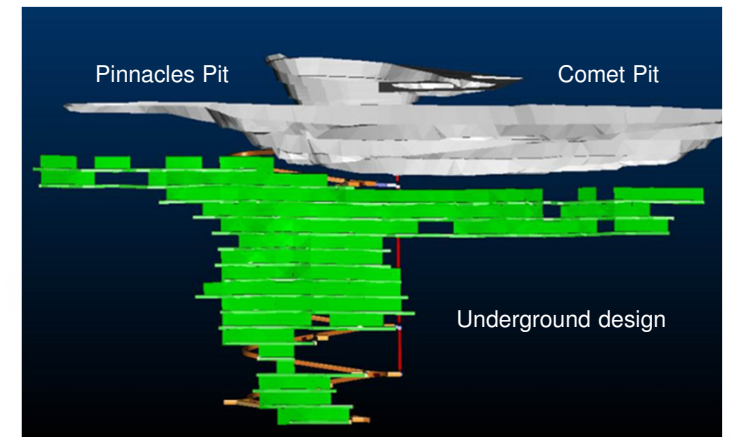
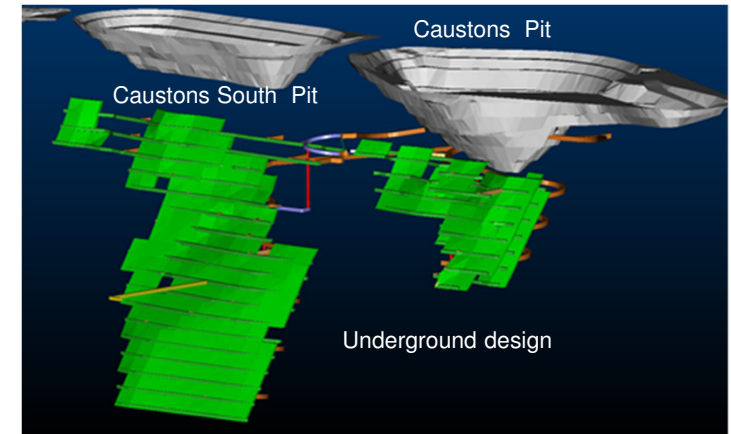
- single access into ore structures
- ore strike driving 3.5 metres wide & 4.0 metres high

Stoping:

- long hole mining
- unconsolidated fill

Current status:

- capital deferred for 12 months



For personal use only

Hollandaire - Next Steps



Design:

- finalise process design

Further evaluation on upside potential:

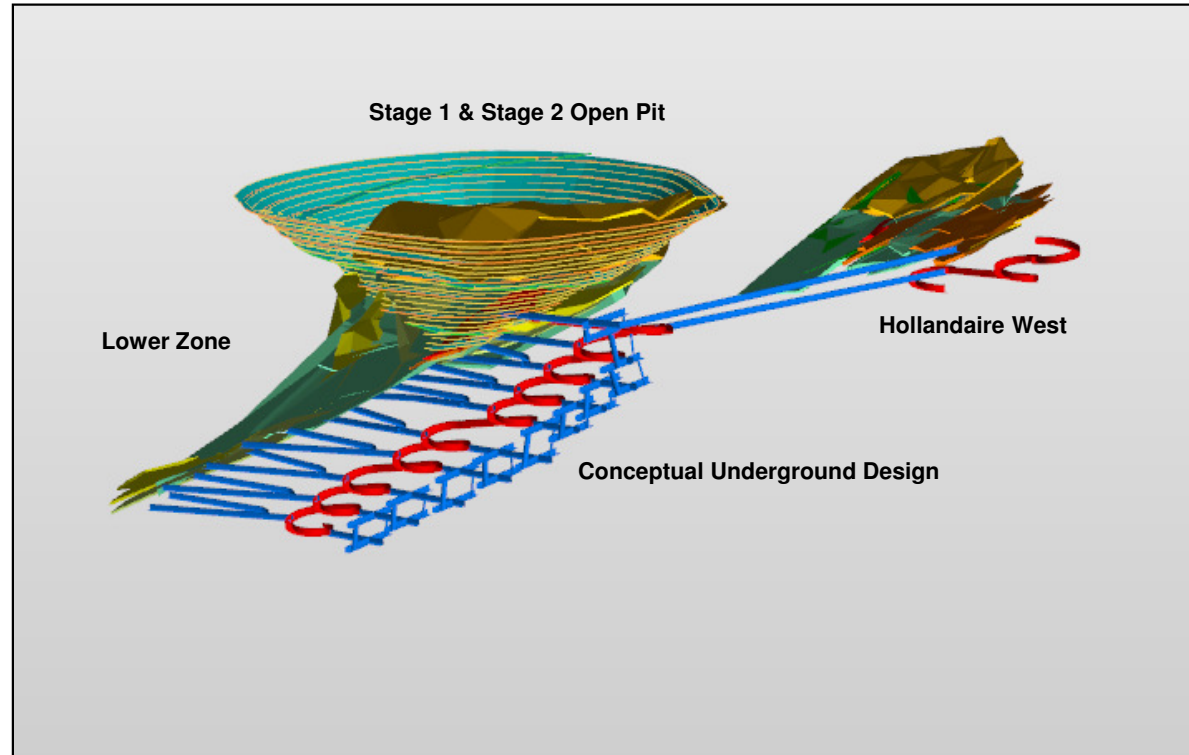
- underground at Hollandaire lower zone
- underground at Hollandaire West
- resource to reserve conversion

Exploration:

- continue within the Eelya Complex
- generate scale

High quality concentrate specifications:

Composite	Concentrate Grade								Recovery (%)							
	Cu (%)	Au (ppm)	Ag (ppm)	Fe (%)	As (ppm)	Bi (ppm)	S (%)	Pb (%)	Cu	Au	Ag	Fe	As	Bi	S	Pb
High Grade	28.0	3.00	75	29.0	70	295	41.0	0.44	95.0	66.0	91.0	50.0	56.0	85.0	55.0	88.0
Low Grade	26.0	3.10	78	28.0	6		32.0		98.0	90.0	85.0	17.0	9.0		19.0	



For personal use only



silverlake
RESOURCES

Great Southern

ASX: SLR

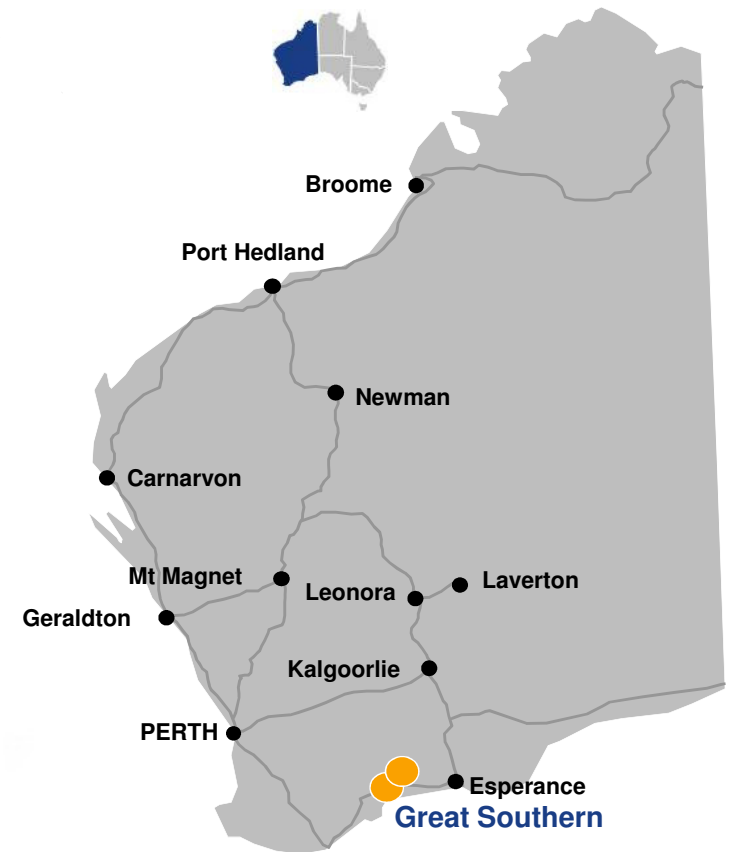
ABN: 38 108 779 782

www.silverlakeresources.com.au

Great Southern - Overview



Location	450km south east of Perth	
Stage	Advanced exploration	
Regional Geology	Proterozoic & Archean lithologies (Kundip) Volcanic successions (Munglinup)	
Projects	Kundip Trilogy Munglinup	Gold & Copper Polymetallic (Cu, Au, Ag, Zn, Pb) Gold
Resource¹	1.0Moz @ 2.0 g/t Au 10Moz @ 20.5 g/t Ag 95kt @ 0.6% Cu	
Reserves¹	0.44Moz @ 1.8 g/t Au 8.3Moz @ 34.8 g/t Ag 60kt @ 0.8% Cu	
Current Infrastructure	90 person camp Mill site	
Priority Targets	Kundip Mining Centre	
Strategy	Third production centre in FY17 Modular processing strategy Stage 1 Gold Only: Capex~A\$25 million Stage 2 Gold & Copper: Capex~A\$10 million	



¹: Refer to appendix - JORC Resource & Reserve Inventory



Great Southern - Aerial View



For personal use only



Great Southern - RAV 8 Site



For personal use only



Concentrate thickener & concentrate storage shed at Rav 8



3.5MW of excess installed power in the Murchison once converted to gas in December 2013 quarter available to be relocated to Rav 8



Idle 600ktpa mill, drive train and electrics at Lakewood in Kalgoorlie readily available to be relocated to Rav 8



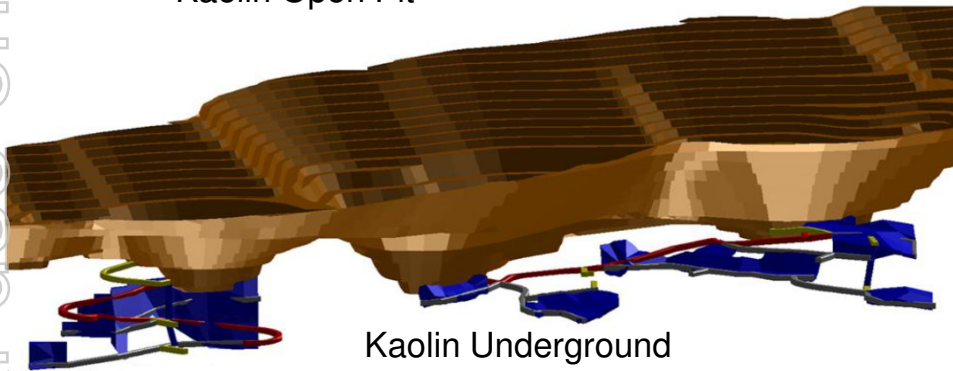
Rav 8 open pit - Potential In-Pit Tailings Storage Facility



Kundip Mining Centre - BFS Outputs

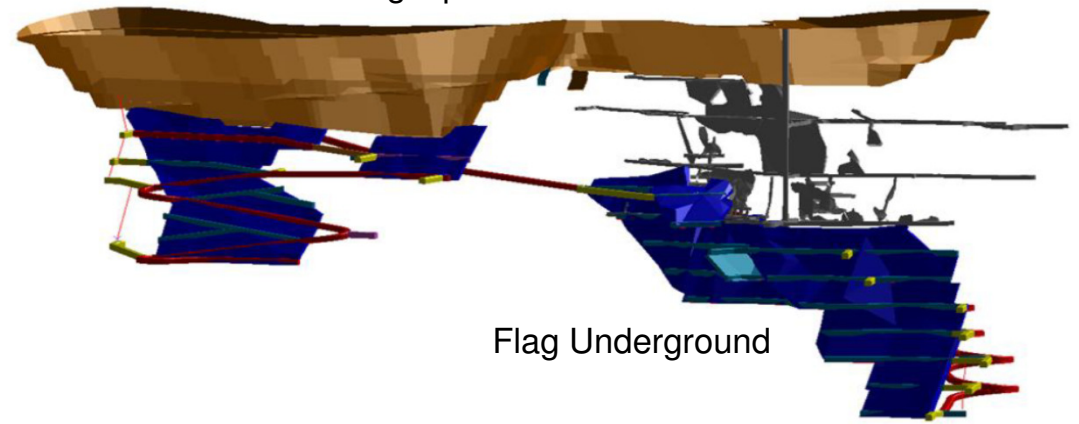


Kaolin Open Pit



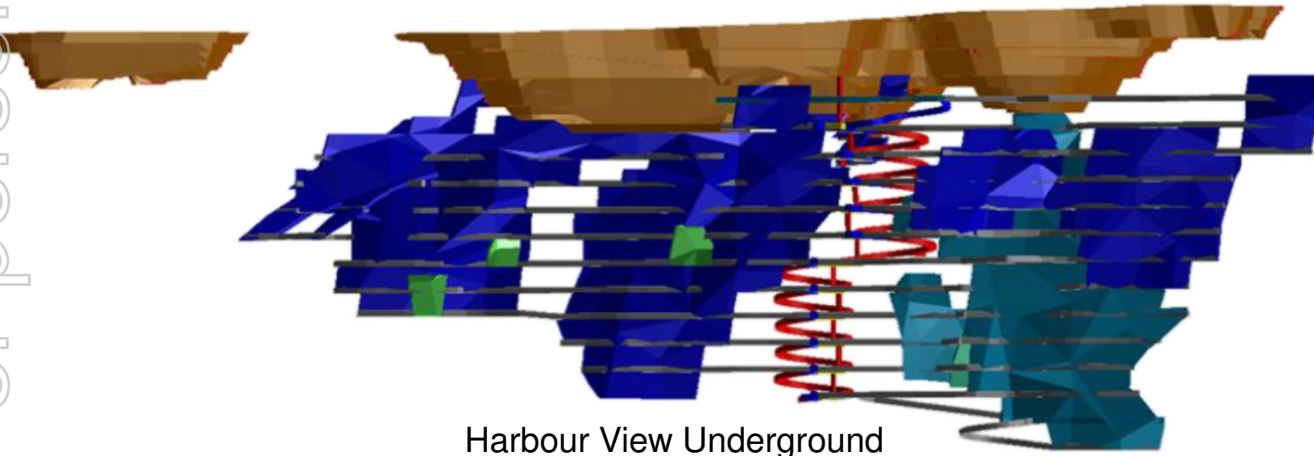
Kaolin Underground

Flag Open Pit



Flag Underground

Harbour View Open Pit



Harbour View Underground

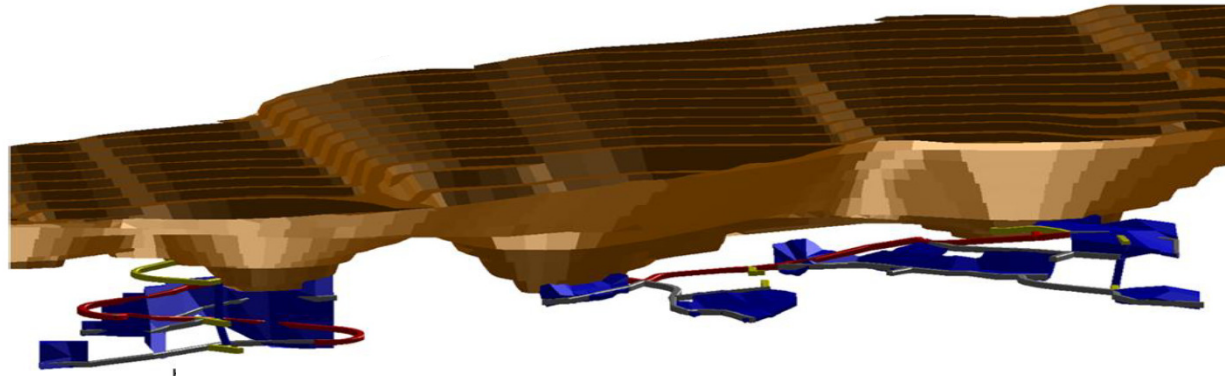
Area	Ore Reserve ¹
Kaolin Open Pit	114,300oz @ 2.8 g/t Au
Kaolin Underground	19,800oz @ 4.4 g/t Au
Harbour View Open Pit	20,600oz @ 3.2 g/t Au
Harbour View Underground	84,400oz @ 3.5 g/t Au
Flag Open Pit	27,000oz @ 4.0 g/t Au
Flag Underground	38,600oz @ 5.0 g/t Au
Total ²	307,000oz @ 3.4 g/t Au

For personal use only

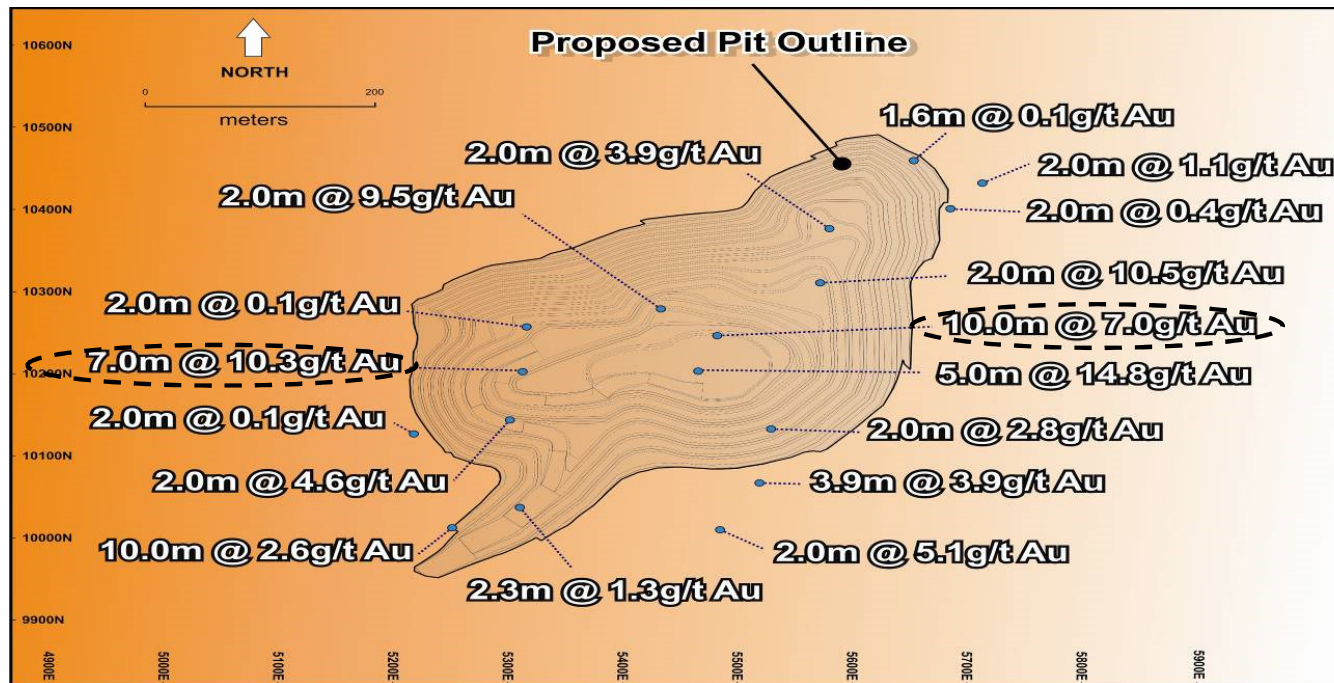
1: Refer to appendix - JORC Resource & Reserve summary
Excludes Trilogy
2: Rounding may give discrepancies in this table



Kaolin - Gold Deposit



Kaolin	Ore Reserve ¹
Open Pit	114,300oz @ 2.8 g/t Au
Underground	19,800oz @ 4.4 g/t Au



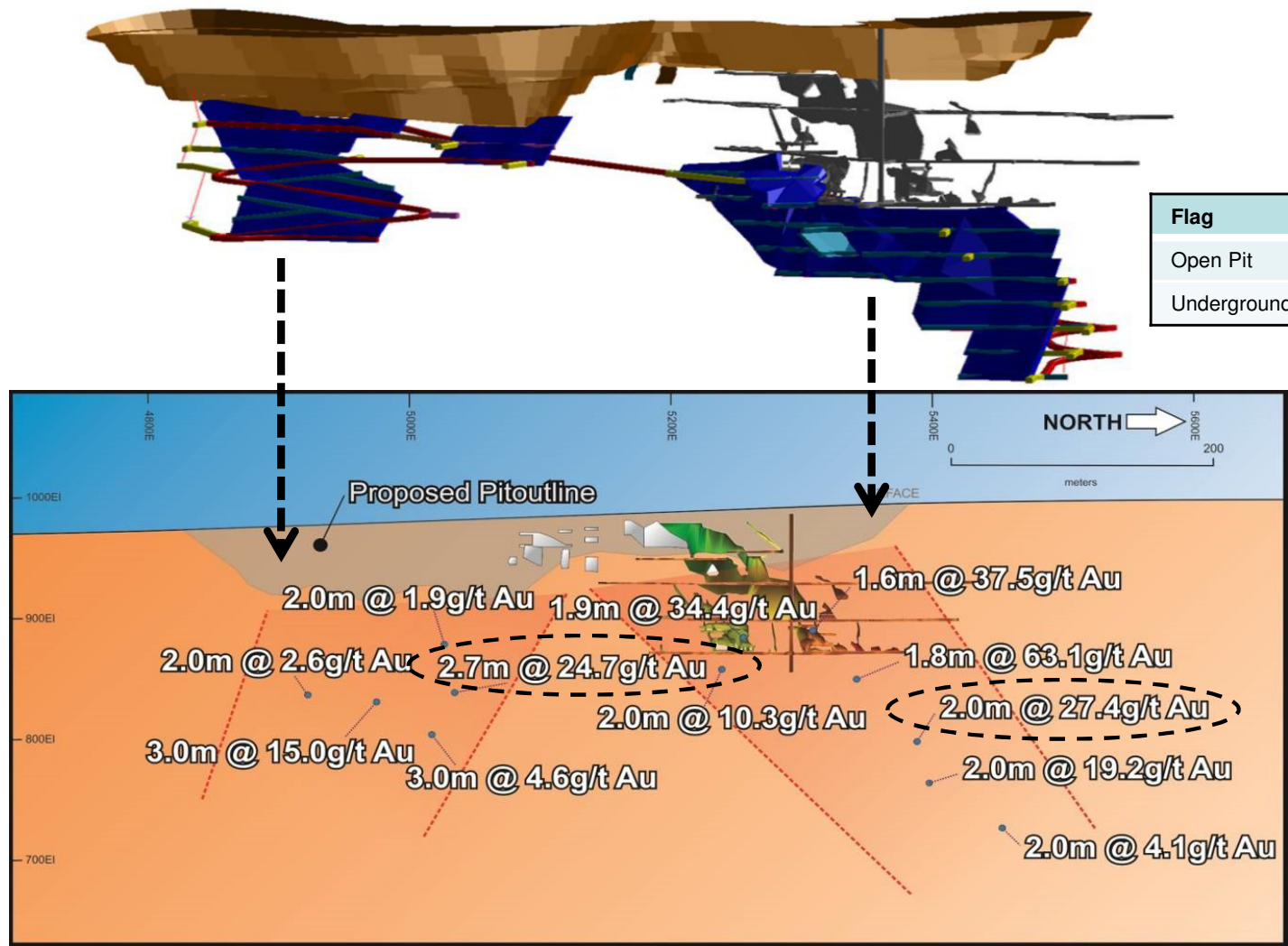
For personal use only

¹: Refer to appendix - JORC Resource & Reserve summary



Flag - Gold Deposit (low Cu values)

For personal use only



Flag	Ore Reserve ¹
Open Pit	27,000oz @ 4.0 g/t Au
Underground	38,600oz @ 5.0 g/t Au

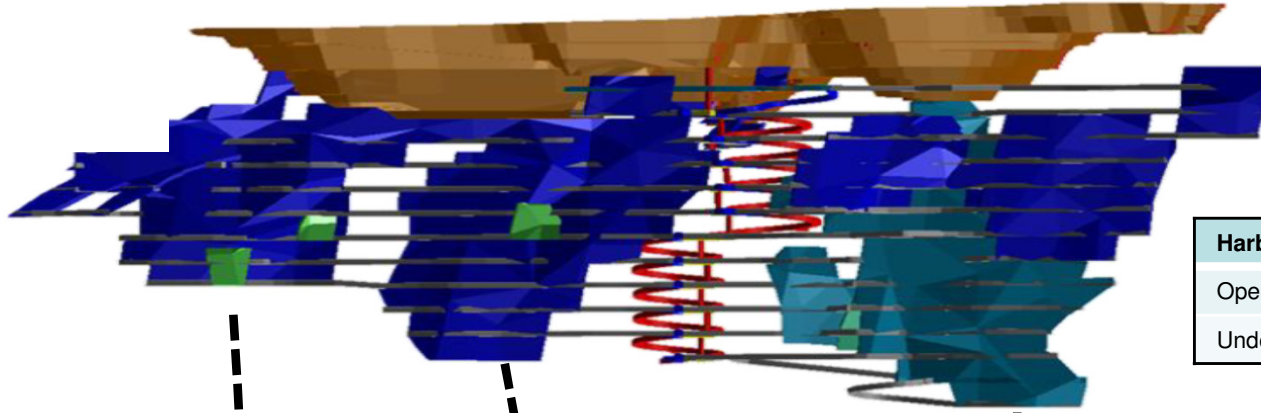
¹: Refer to appendix - JORC Resource & Reserve summary



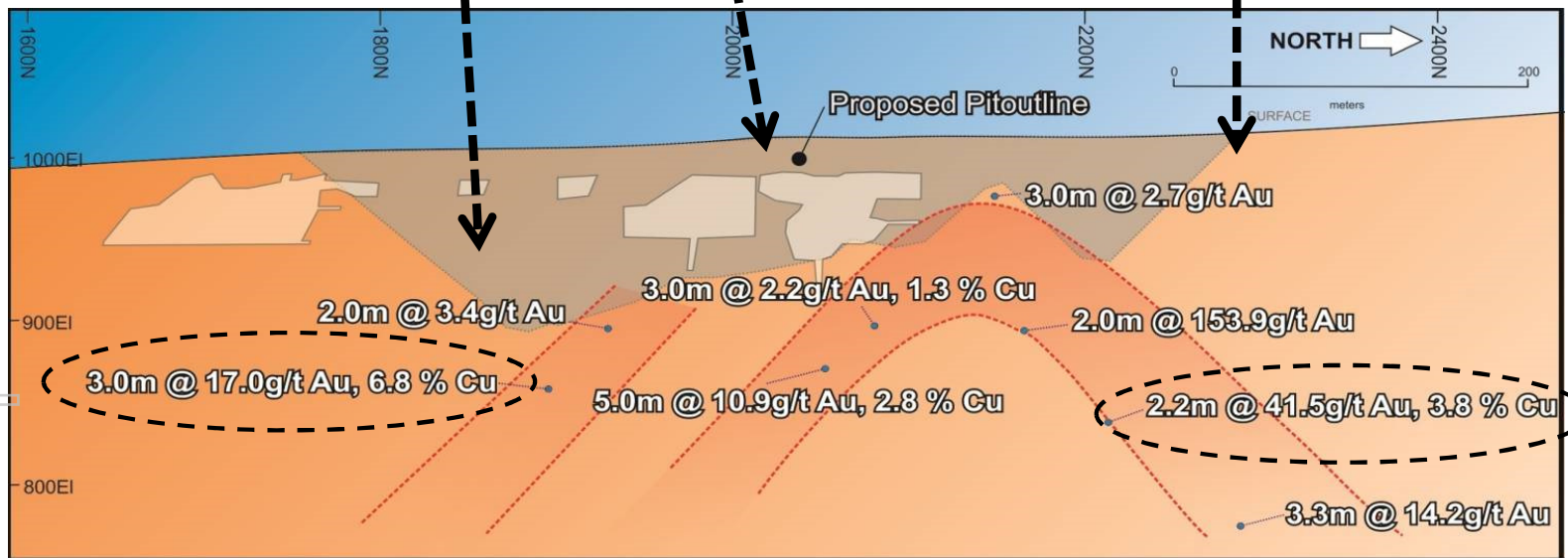
Harbour View - Gold & Copper Deposit



For personal use only



Harbour View	Ore Reserve ¹
Open Pit	20,600oz @ 3.2 g/t Au
Underground	84,400oz @ 3.5 g/t Au



Base metals circuit funded from cashflow generated from free milling gold at Kaolin & Flag

¹: Refer to appendix - JORC Resource & Reserve summary



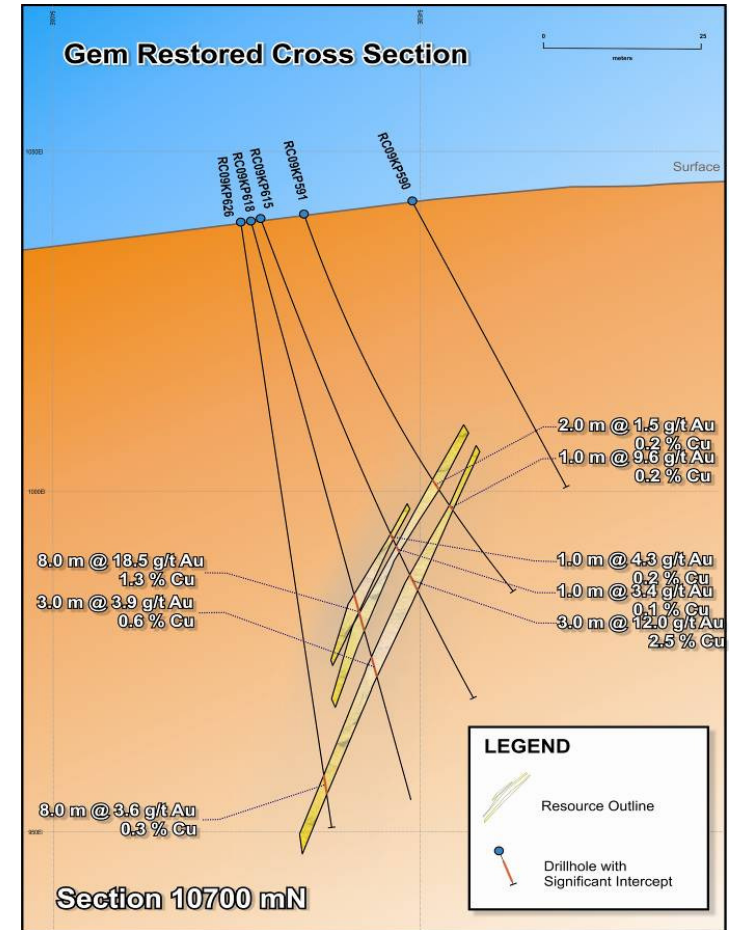
Great Southern - Exploration

Kundip Mining Centre:

- numerous targets
- numerous high grade results with no follow up drilling
- mining centre contains gold only and gold & copper deposits
- Current mineralised envelope is 3 km wide & 3 km long

Limited Meaningful or Systematic Exploration:

- 2,740 holes in the data base
- Only 10% holes drilled deeper than 100 metres
- Resource: 789,000 ounces¹
- further resource to reserve conversion & resource growth highly likely



¹: Refer to appendix - JORC Resource & Reserve summary



Your Company



Growth:

- pipeline of enhancing projects
- ready to develop in an improved & sustained price environment

Risk diversification:

- multiple mines and mills
- operational flexibility

Financial:

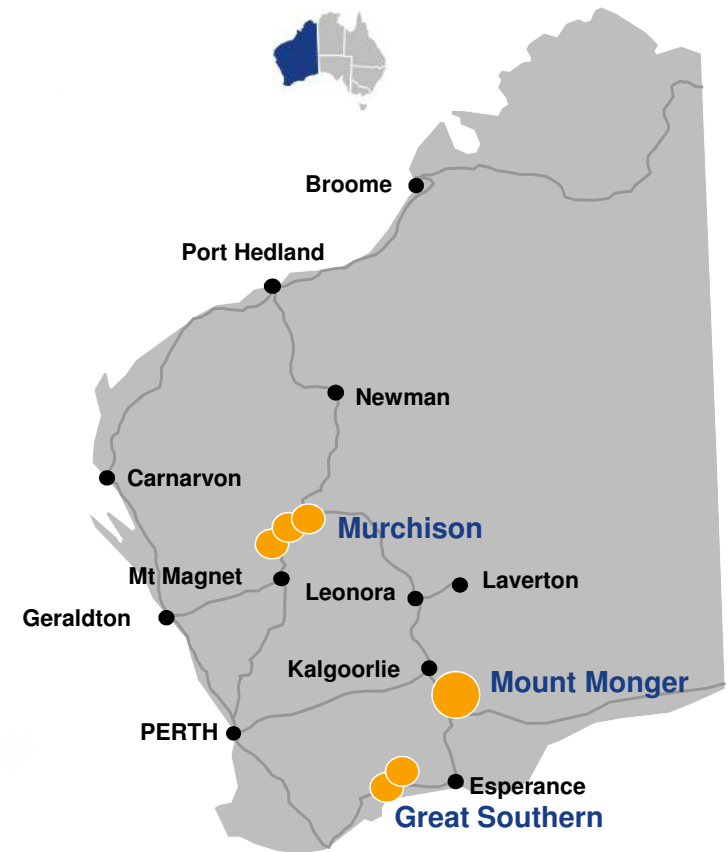
- substantial cost savings delivered through synergies
- restructured the business to protect the downside
- maintained flexibility to capture the upside

Large gold resource base with significant upside:

- 6.4Moz resource inclusive of 1.7Moz of reserves¹
- highly prospective, underexplored tenement holding
- long term commitment to exploration

Outcome:

- sustain 200,000 ounces per annum in the medium term
- enhancing projects to deliver growth



¹: Refer to appendix - JORC Resource & Reserve Inventory



For personal use only



Presentation Appendix

ASX: SLR

ABN: 38 108 779 782

www.silverlakeresources.com.au

JORC Gold Resources



As at June 2013 Deposit	Measured Resources			Indicated Resources			Inferred Resources			Total Resources		
	Ore t '000s	Grade g/t Au	Total Oz Au '000s	Ore t '000s	Grade g/t Au	Total Oz Au '000s	Ore t '000s	Grade g/t Au	Total Oz Au '000s	Ore t '000s	Grade g/t Au	Total Oz Au '000s
Mount Monger	629.9	8.4	171.1	4,236.1	6.0	812.8	7,283.8	5.4	1,268.0	12,149.9	5.8	2,251.9
Randalls	155.0	2.1	10.5	7,014.0	2.5	569.3	3,228.0	2.5	257.2	10,397.0	2.5	837.0
Aldiss				6,605.0	2.1	450.9	247.0	2.9	22.8	6,852.0	2.2	473.7
Total Eastern Goldfields	784.9	7.2	181.6	17,855.1	3.2	1,833.0	10,758.8	4.5	1,548.0	29,398.9	3.8	3,562.6
Tuckabianna				5,525.4	2.8	491.2	6,435.4	2.6	530.0	11,960.8	2.7	1,021.2
Comet				3,227.8	3.2	332.9	1,064.0	3.2	108.4	4,291.8	3.2	441.4
Moyagee				1,034.4	2.2	73.8	3,039.2	3.2	309.8	4,073.6	2.9	383.6
Eelya Complex				473.0	1.4	20.9	215.9	1.9	13.4	688.9	1.5	34.3
Total Murchison				10,260.6	2.8	918.8	10,754.5	2.8	961.7	21,015.2	2.8	1,880.5
Kundip				4,390.0	3.4	481.3	4,550.0	2.1	307.2	8,940.0	2.7	788.5
Trilogy	310.0	2.4	23.9	5,750.0	0.7	136.4	981.7	1.7	53.4	7,041.7	0.9	213.8
Total Great Southern	310.0	2.4	23.9	10,140.0	1.9	617.7	5,531.7	2.0	360.6	15,981.7	2.0	1,002.3
Total Silver Lake	1,094.9	5.8	205.5	38,255.8	2.7	3,369.6	27,045.0	3.3	2,870.3	66,395.7	3.0	6,445.4

As at June 2013
Gold resources are inclusive of ore reserves



JORC Gold Ore Reserves



As at June 2013 Deposit	Proved Reserves			Probable Reserves			Total Reserves		
	Ore t '000s	Grade g/t Au	Total Oz Au '000s	Ore t '000s	Grade g/t Au	Total Oz Au '000s	Ore t '000s	Grade g/t Au	Total Oz Au '000s
Mount Monger - OP				850.9	2.3	62.7	850.9	2.3	62.7
Mount Monger - UG				1,988.0	6.2	394.4	1,988.0	6.2	394.4
Mount Monger Stockpiles	332.7	1.7	18.4				332.7	1.7	18.4
Randalls - OP				1,958.6	2.1	135.3	1,958.6	2.1	135.3
Randalls - UG				721.5	3.5	81.7	721.5	3.5	81.7
Randalls Stockpiles	1,331.9	1.3	54.1				1,331.9	1.3	54.1
Aldis				1,135.0	2.4	86.5	1,135.0	2.4	86.5
Total Eastern Goldfields	1,664.7	1.4	72.4	6,653.9	3.6	760.6	8,318.6	3.1	833.0

As at June 2013 Deposit	Proved Reserves			Probable Reserves			Total Reserves		
	Ore t '000s	Grade g/t Au	Total Oz Au '000s	Ore t '000s	Grade g/t Au	Total Oz Au '000s	Ore t '000s	Grade g/t Au	Total Oz Au '000s
Tuckabianna - OP				480.5	1.8	28.5	480.5	1.8	28.5
Tuckabianna - UG				1,285.1	3.8	156.5	1,285.1	3.8	156.5
Tuckabianna - Surface Stockpiles	126.7	0.8	3.1				126.7	0.8	3.1
Comet - OP				769.6	2.2	55.0	769.6	2.2	55.0
Comet - UG				921.7	3.6	107.8	921.7	3.6	107.8
Comet - Surface Stockpiles	51.4	0.8	1.3				51.4	0.8	1.3
Moyagee				342.6	2.2	24.7	342.6	2.2	24.7
Eelya Complex				574.0	0.8	14.0	574.0	0.8	14.0
Total Murchison	178.1	0.8	4.5	4373.5	2.7	386.5	4551.5	2.7	390.9
Kundip				2,810.0	3.4	307.2	2,810.0	3.4	307.2
Trilogy	310.0	2.2	22.0	4,320.0	0.8	112.9	4,630.0	0.9	134.9
Total Great Southern	310.0	2.2	22.0	7,130.0	1.8	420.1	7,440.0	1.8	442.1
Total Silver Lake	2,152.7	1.4	98.9	18,157.4	2.7	1,567.2	20,310.1	2.6	1,666.0

As at June 2013



For personal use only

JORC Base Metal Resources



As at June 2013	Measured Resources					Indicated Resources					Inferred Resources					Total Resources					
	Ore tonnes '000s	Grade	Increment	Total '000s	Unit	Ore tonnes '000s	Grade	Increment	Total '000s	Unit	Ore tonnes '000s	Grade	Increment	Total '000s	Unit	Ore tonnes '000s	Grade	Increment	Total '000s	Unit	
Kundip Project																					
Silver	-	-	g/t Ag	-	oz	4,390.0	2.5	g/t Ag	353.9	oz	4,550.0	2.1	g/t Ag	314.2	oz	8,940.0	2.3	g/t Ag	668.1	oz	
Copper	-	-	% Cu	-	t	4,390.0	0.4	% Cu	15.6	t	4,550.0	0.3	% Cu	14.7	t	8,940.0	0.3	% Cu	30.2	t	
Trilogy Project																					
Silver	310.0	41.2	g/t Ag	406.6	oz	5,750.0	48.0	g/t Ag	8,859.6	oz	180.0	12.0	g/t Ag	73.4	oz	6,240.0	47.0	g/t Ag	9,339.7	oz	
Copper	310.0	0.3	% Cu	0.9	t	5,750.0	1.1	% Cu	62.3	t	180.0	0.8	% Cu	1.4	t	6,240.0	1.0	% Cu	64.6	t	
Hollandaire Project																					
Silver	-	-	-	-	oz	1,926.0	6.2	-	386.4	oz	727.9	4.6	g/t Ag	108.8	oz	2,653.9	5.8	g/t Ag	495.2	oz	
Copper	-	-	-	-	t	1,891.3	2.0	-	37.1	t	122.4	1.4	% Cu	1.6	t	2,013.7	1.9	% Cu	38.7	t	
Total Resource																					
Silver	310.0	40.8	g/t Ag	406.6	oz	12,066.0	24.7	g/t Ag	9,599.9	oz	4,730.0	2.5	g/t Ag	386.6	oz	17,833.9	18.3	g/t Ag	10,502.9	oz	
Copper	310.0	0.3	% Cu	0.9	t	12,031.3	1.0	% Cu	114.9	t	4,852.4	0.4	% Cu	17.7	t	17,193.7	0.8	% Cu	133.5	t	

For personal use only

As at June 2013

Slide 48



JORC Base Metal Reserves



As at June 2013	Proved Reserves					Probable Reserves					Total Reserves				
	Ore tonnes '000s	Grade	Increment	Total '000s	Unit	Ore tonnes '000s	Grade	Increment	Total '000s	Unit	Ore tonnes '000s	Grade	Increment	Total '000s	Unit
Kundip Project															
Silver	-	-	g/t Ag	-	oz	2,810.0	2.7	g/t Ag	243.9	oz	2,810.0	2.7	g/t Ag	243.9	oz
Copper	-	-	% Cu	-	t	2,810.0	0.4	% Cu	10.7	t	2,810.0	0.4	% Cu	10.7	t
Trilogy Project															
Silver	310.0	45.0	g/t Ag	448.5	oz	4,320.0	55.0	g/t Ag	7,637.7	oz	4,630.0	54.3	g/t Ag	8,086.2	oz
Copper	310.0	0.4	% Cu	1.2	t	4,320.0	1.1	% Cu	48.1	t	4,630.0	1.1	% Cu	49.3	t
Hollandaire Project															
Silver			g/t Ag		oz	574.0	7.9	g/t Ag	145.4	oz	574.0	7.9	g/t Ag	145.4	oz
Copper			% Cu		t	441.8	3.3	% Cu	13.5	t	441.8	1.1	% Cu	13.5	t
Total Reserve															
Silver	310.0	45.0	g/t Ag	448.5	oz	7,130.0	34.4	g/t Ag	7,881.7	oz	8,014.0	32.9	g/t Ag	8,475.6	oz
Copper	310.0	0.4	% Cu	1.2	t	7,130.0	0.8	% Cu	58.8	t	7,881.8	0.9	% Cu	73.5	t

As at June 2013



For personal use only