

For personal use only



# Investor Presentation

## February 2014

Les Davis - Managing Director

ASX: SLR

ABN: 38 108 779 782

[www.silverlakeresources.com.au](http://www.silverlakeresources.com.au)

# Important Notice and Disclaimer



**Disclaimer:** Silver Lake Resources Limited ("Silver Lake" or "the Company") has prepared this presentation based on information available to it. No representation or warranty, express or implied, is made as to the fairness, accuracy, completeness or correctness of the information, opinions and conclusions contained in this presentation. To the maximum extent permitted by law, none of Silver Lake, its directors, employees or agents, advisers, nor any other person accepts any liability, including, without limitation, any liability arising from fault or negligence on the part of any of them or any other person, for any loss arising from the use of this presentation or its contents or otherwise arising in connection with it.

This presentation contains general and background information about Silver Lake's activities current as at the date of the presentation and should not be considered to be comprehensive or to comprise all the information that an investor should consider when making an investment decision. The information is provided in summary form, has not been independently verified, and should not be considered to be comprehensive or complete. It should be read solely in conjunction with the oral briefing provided by Silver Lake and all other documents provided to you by Silver Lake. Silver Lake is not responsible for providing updated information and assumes no responsibility to do so.

All dollar terms expressed in this presentation are in Australian dollars unless otherwise stated.

**No offer:** This presentation is not an offer, invitation, solicitation or other recommendation with respect to the subscription for, purchase or sale of any security, and neither this presentation nor anything in it shall form the basis of any contract or commitment whatsoever.

**Forward looking statements:** This presentation may contain forward looking statements that are subject to risk factors associated with gold exploration, mining and production businesses. It is believed that the expectations reflected in these statements are reasonable but they may be affected by a variety of variables and changes in underlying assumptions which could cause actual results or trends to differ materially, including but not limited to price fluctuations, actual demand, currency fluctuations, drilling and production results, reserve estimations, loss of market, industry competition, environmental risks, physical risks, legislative, fiscal and regulatory changes, economic and financial market conditions in various countries and regions, political risks, project delay or advancement, approvals and cost estimates.

Forward-looking statements, including projections, forecasts and estimates, are provided as a general guide only and should not be relied on as an indication or guarantee of future performance and involve known and unknown risks, uncertainties and other factors, many of which are outside the control of Silver Lake. Past performance is not necessarily a guide to future performance and no representation or warranty is made as to the likelihood of achievement or reasonableness of any forward looking statements or other forecast.

**No investment advice:** This presentation is not financial product, investment advice or a recommendation to acquire Silver Lake securities and has been prepared without taking into account the objectives, financial situation or needs of individuals. Before making an investment decision prospective investors should consider the appropriateness of the information having regard to their own objectives, financial situation and needs, and seek legal, taxation and financial advice appropriate to their jurisdiction and circumstances. Silver Lake is not licensed to provide financial product advice in respect of its securities or any other financial products. Cooling off rights do not apply to the acquisition of Silver Lake securities. Silver Lake assumes that the recipient is capable of making its own independent assessment, without reliance on this document, of the information and any potential investment and will conduct its own investigation.

**Component Person:** The information in this presentation that relates to mineral resources, mineral reserves and exploration results are based on information compiled by Mr Christopher Banasik who is a Member of the Australasian Institute of Mining and Metallurgy. Any statement herein, direct or implied, as to a potential gold deposit is conceptual in nature and a reference to the targeted gold potential and not to any JORC compliant Mineral Resource. Mr Banasik is a full time employee of Silver Lake Resources Ltd, and has sufficient experience which is relevant to the style of mineralisation under consideration to qualify as a Competent Person as defined in the 2004 edition of the JORC Code.

Silver Lake continues to report ore reserves and mineral resources as defined under the 2004 edition of the JORC Code. To date ore reserves and mineral resources have not been reported to comply with the JORC Code 2012 on the basis that the information has not materially changed since it was last reported. Mr Banasik has given his consent to the inclusion in the report of the matters based on the information in the form and context in which it appears.

**Targets:** The information in this presentation that relates to exploration and production targets refers to targets that are conceptual in nature, where there has been insufficient exploration to define a Mineral Resource and it is uncertain if further exploration will result in the determination of a Mineral Resource.



# Company Overview



## ASX Code: SLR

Ordinary Shares	437.6 million
Options Outstanding	2.0 million
Market Cap: A\$0.70 per share	A\$306 Million
Finance - 31 December 2013 Bank Debt	A\$16.8M cash & bullion A\$4.0M (retired 28 Feb 14)
Range (12 month)	A\$2.62 - A\$0.35
Average Daily Volume	4.2M shares (\$2.6M)

## Directors

Paul Chapman	Chairman
Les Davis	Managing Director
Luke Tonkin	Director of Operations
Chris Banasik	Director Exploration and Geology
David Griffiths	Non-Executive Director
Peter Johnston	Non-Executive Director
Brian Kennedy	Non-Executive Director



Investor	Shares (M)	%
Directors	27.9	6.4
Van Eck	33.5	7.7
Baker Steel	20.8	4.8
Sprott Asset Management	11.1	2.5
<b>Top 20 + Directors</b>	<b>196.7</b>	<b>45.0</b>



# A Quality, Diversified, Western Australian Portfolio

“5,000 sqkm of highly prospective under explored tenements containing gold, silver, copper & zinc”

For personal use only

-  Producing Assets
-  Exploration & Development

**Murchison (100%)**

- 1.9Moz gold resource<sup>1</sup>
- 0.4Moz ore reserve<sup>1</sup>
- 1.2Mtpa processing facility
- FY14 H1 production = 26.6koz
- Strategic review in progress

**Eleya Complex (100%)**

- Hollandaire – high grade copper / gold discovery
- Highly prospective for gold & base metals
- 39kt Copper resource<sup>1</sup>

**Great Southern (100%)**

- 0.9Moz gold resource<sup>1</sup>
- 0.5Moz ore reserve<sup>1</sup>
- Potential third production centre
- Gold, Copper & Silver
- Targeted as Silver Lake’s third “mining centre”

**Mount Monger (100%) - Core Asset**

- 3.6Moz gold resource<sup>1,2</sup>
- 0.8Moz ore reserve<sup>1,2</sup>
- Multiple underground mines and 1 open pit mine in production
- 2 processing facilities with 2.0Mtpa capacity
- Expected mine life > 10 years
- FY14 gold production guidance increased from 120 - 130koz to 160-170koz
- FY14 H1 production = 96.6koz

1: Refer to appendix - JORC Resource & Reserve Inventory  
2: Mount Monger is inclusive of Aldiss



# FY14 Budget & Strategy - A\$1,350 gold price



*“Restructured the business to protect the downside and maintained flexibility to capture the upside”*

## **Maximise Cashflow:**

- improve balance sheet
- lower cost base

## **Defer capital:**

- Murchison underground development
- no expansion projects

## **Cost reductions:**

- directors & staff salary reductions
- organisational restructure
- contract renegotiations

## **Mount Monger mill feed:**

- Daisy Complex, Cock-eyed Bob, Maxwells & Stockpiles
- guidance increased to 160 -170koz

## **Murchison mill feed:**

- multiple open pits
- underperformed on budget
- strategic review in progress

## **Exploration:**

- A\$7.4 million
- focusing on resource to reserve conversion



*“FY14 H1 gold sales totals 123,000 ounces”*  
*“Full Year FY14 group guidance 205-220,000 ounces”*



# Pipeline Of Growth Projects<sup>1</sup>

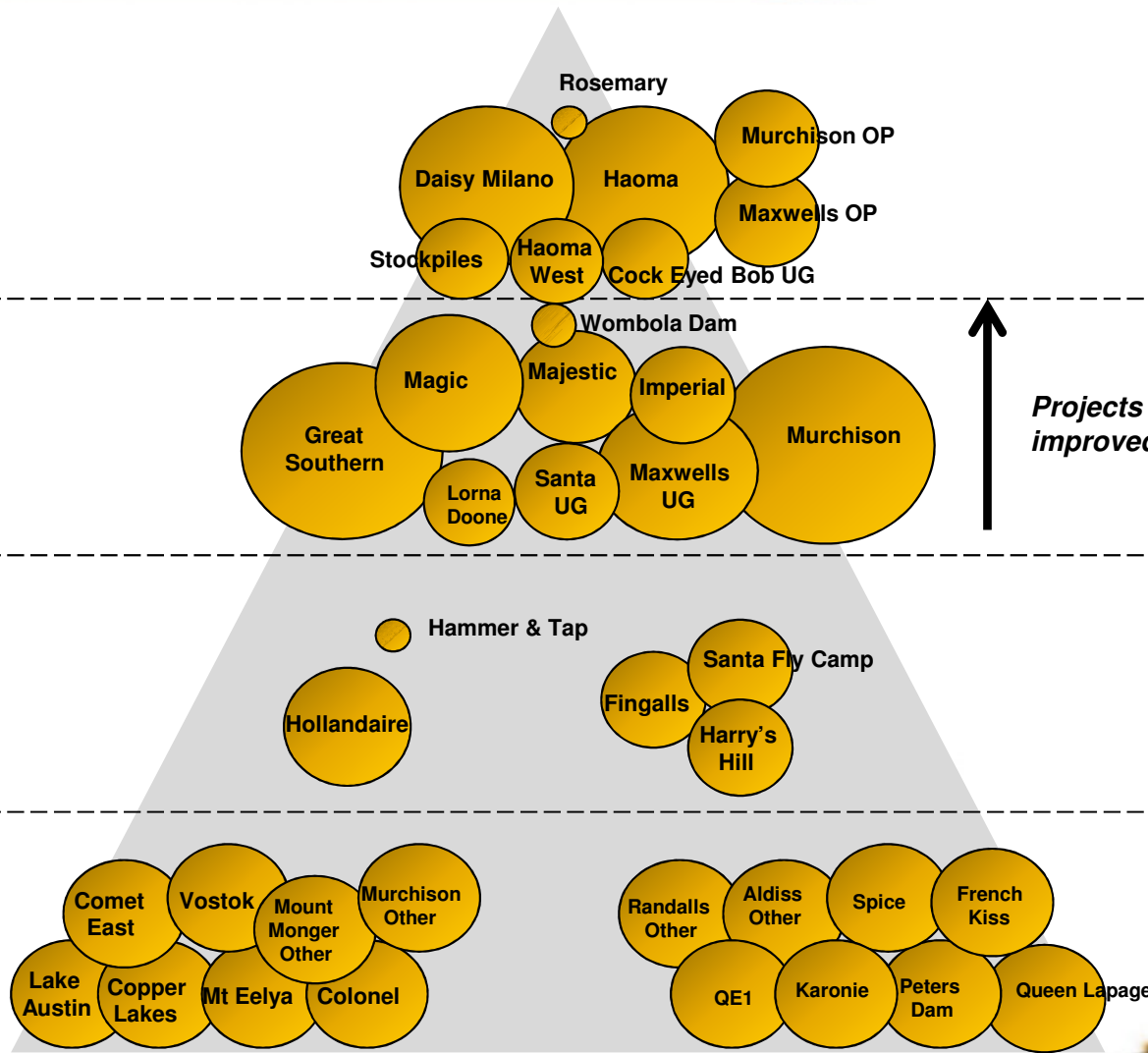
For personal use only

**Producing**

**Development**

**Advanced Exploration**

**Greenfields Exploration**



*Projects ready to advance to production in an improved & sustained gold price environment*



<sup>1</sup> Size of bubble represents potential minable inventory  
Refer to slide 2 - Forward looking statements

For personal use only



## Mount Monger Operations

**160,000 to 170,000 ounces in FY14**

ASX: SLR

ABN: 38 108 779 782

[www.silverlakeresources.com.au](http://www.silverlakeresources.com.au)

# Mount Monger Operations - Overview



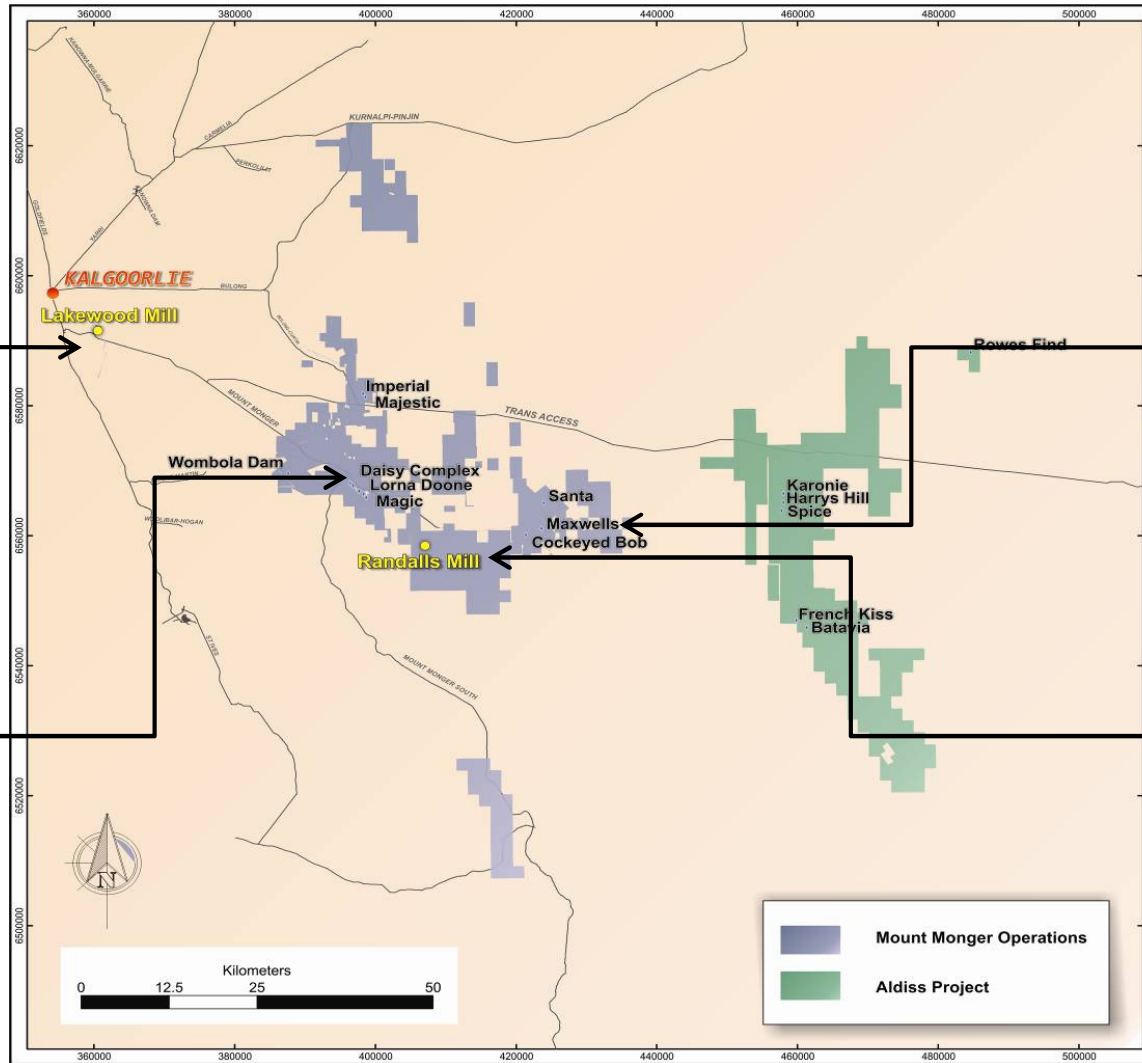
For personal use only



Lakewood Mill (800-900kt pa)



Daisy Complex Portal



Maxwells Open Pit



Randalls Mill (1.1Mt - 1.2Mt pa)



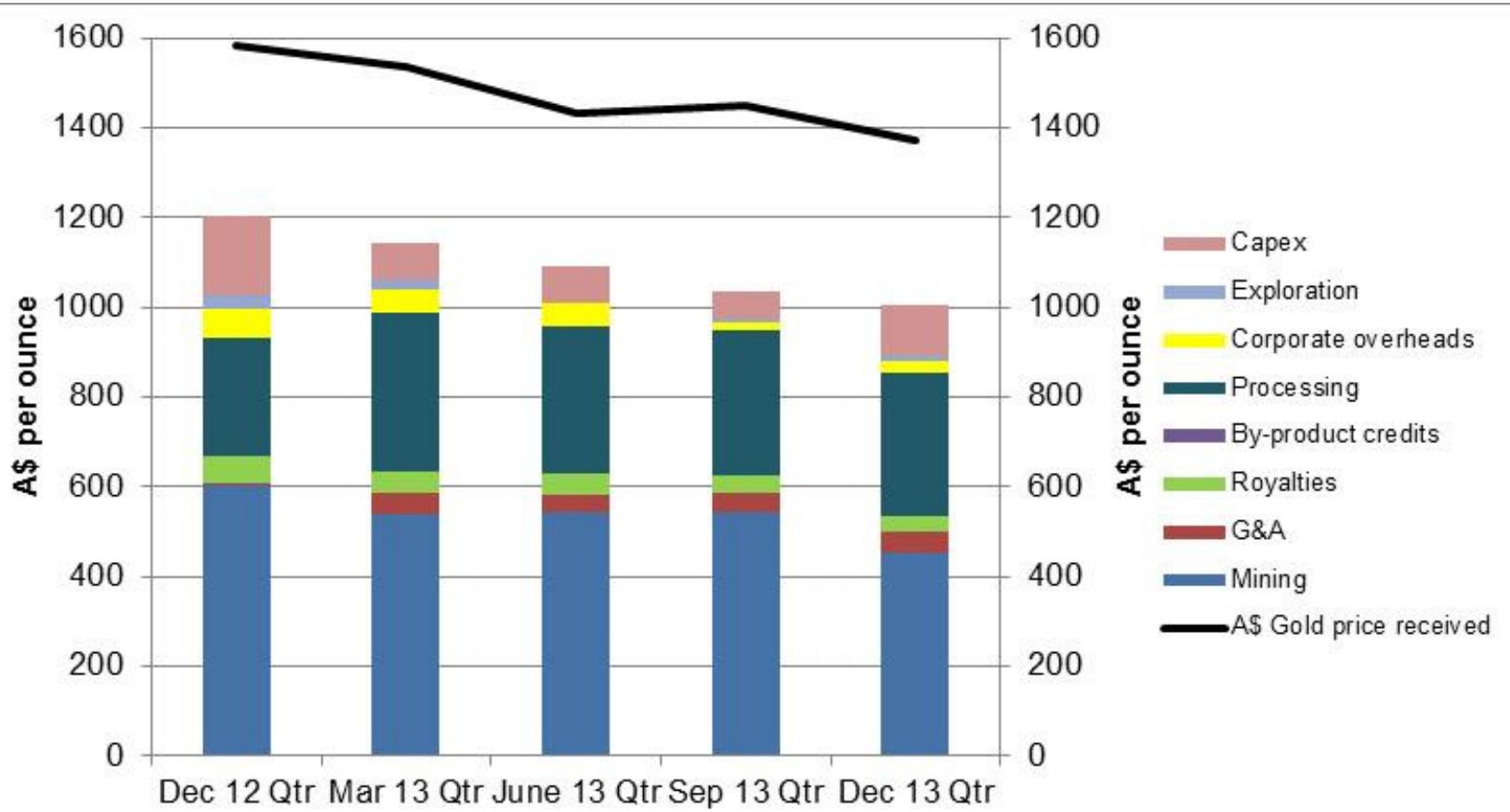


# AISC<sup>1</sup> - Mount Monger



**YTD All in Sustaining Cash Cost at Mount Monger = A\$1,016 oz**

**Global average = US\$1,200 oz**



1. Before non-cash items as detailed in the companies quarterly reports

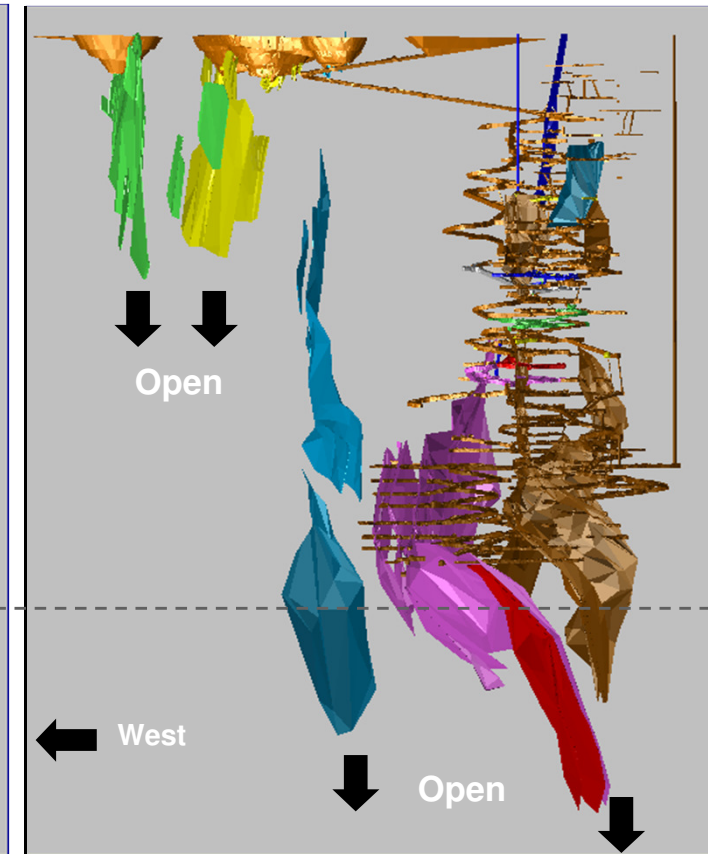
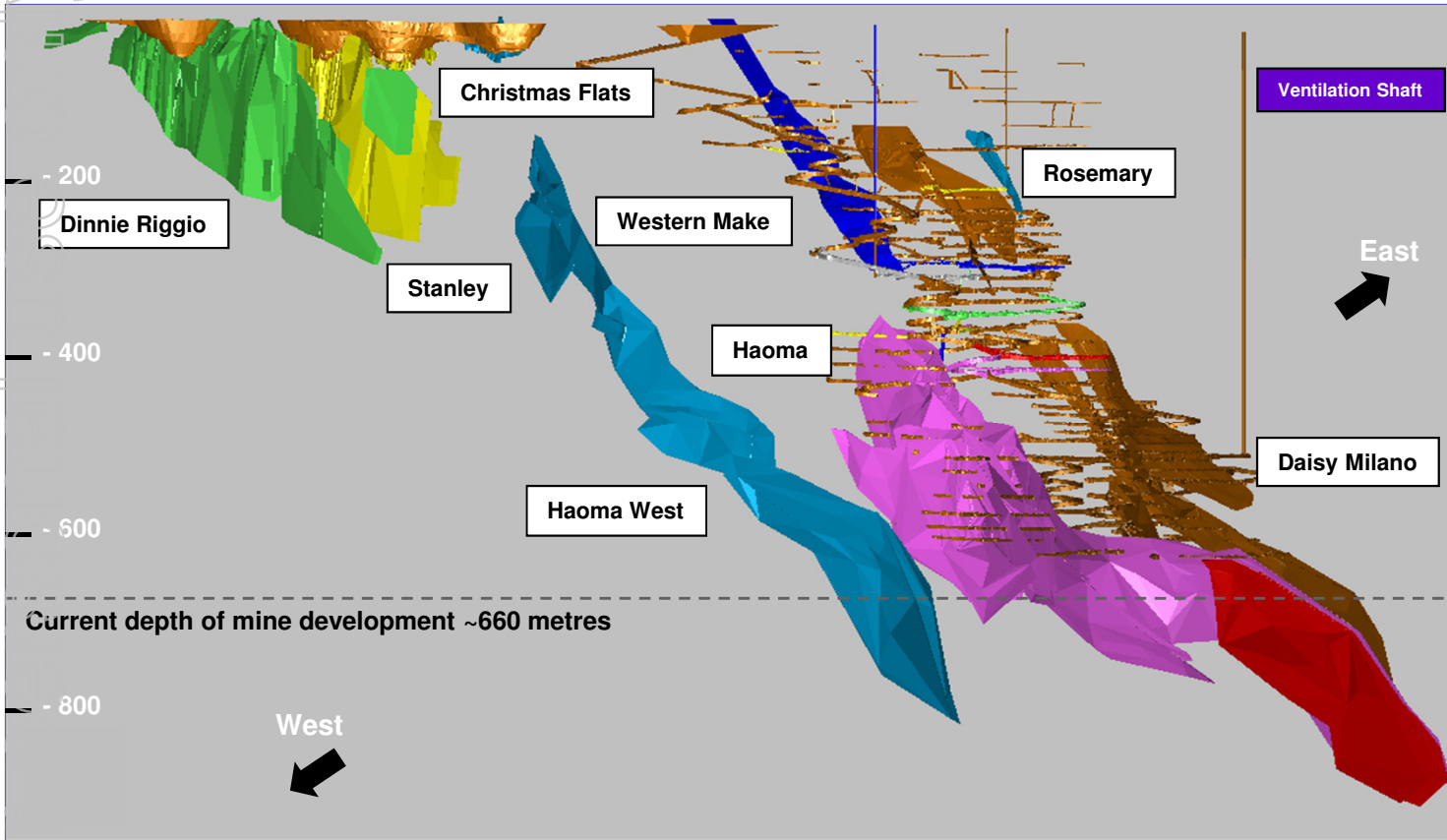


For personal use only

# Daisy Complex - Core Asset



Since Inception to December 2013: 2.4 million tonnes at 7.3 g/t Au for 565koz



All accessible from same infrastructure containing 1.4Moz of resource  
 Silver Lake production 2007 - 2013: 1.9mt at 6.5 g/t Au for 400koz  
 Historical resource to reserve conversion rate ~80%

Multiple mines & structures - all open at depth

**Current endowment 2,000 to 3,000 ounces per vertical metre**

**Mining rate: ~360,000 tonnes per annum**



# Maxwells Deposit

## Large scale open pit:

- 1.6km long
- planned to ~140 vertical metres depth
- Dec 2013 Qtr - high grade lodes 3.2 g/t Au

## Potential underground mine

## Drilling below planned pit shell includes<sup>1</sup>:

- 3.4 metres at 12.8 g/t Au from 150 metres
- 4.6 metres at 21.4 g/t Au from 189 metres
- 3.0 metres at 39.2 g/t Au from 221 metres
- 2.2 metres at 9.9 g/t Au from 404 metres (deepest drill hole to date)



Maxwells Open Pit – Looking South (July 2013)



Nuggetty Ore From Maxwells Open Pit (May 2013)

1. Drill intercepts are historic and have been precisely announced to the ASX.



# Understanding BIF Hosted Gold At Randalls



For personal use only

## Previous Interpretation:

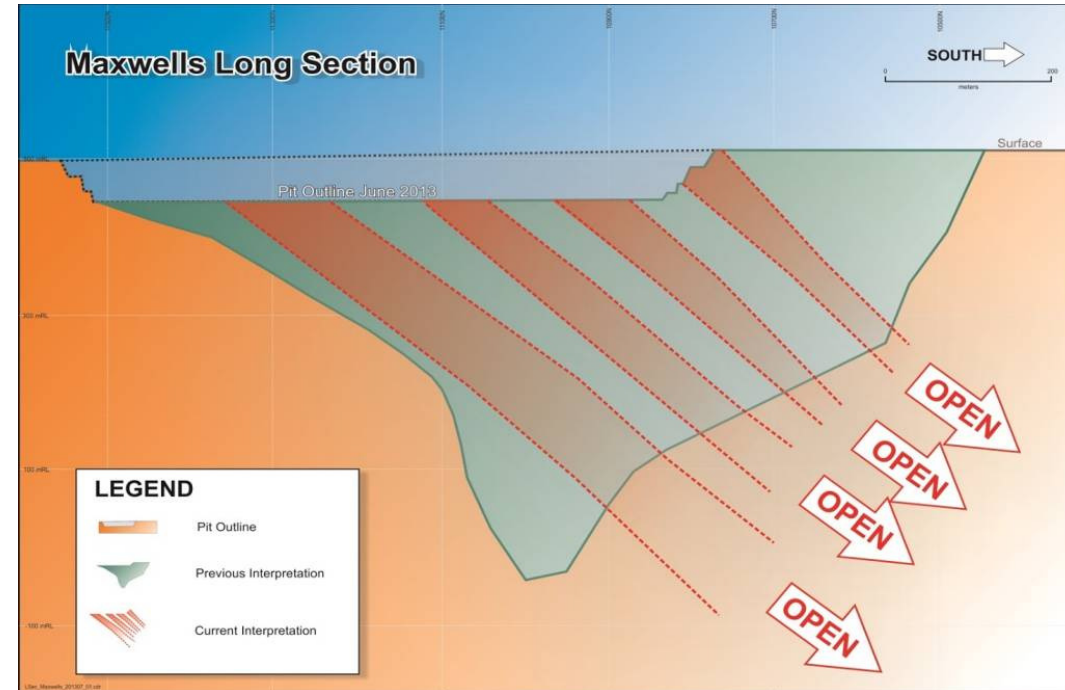
- Sub-vertical high grade BIF zones

## Silver Lake Interpretation:

- south plunging high grade BIF zones

## Impact:

- changes drilling orientation within BIF host rock
- changes mine design for future open pit & underground mines



# Cock-eyed Bob - Ore Development

## ■ Recommended ore development July 2013:

- current decline development accesses 3 levels
- vertical depth only 125 metres from surface
- ore driving in progress
- small mechanised mining fleet

## ■ Mining vs Drilling:

- less expensive than drilling
- provides better geological information
- pivotal part of Silver Lake strategy to understand & unlock the potential of BIF hosted gold deposits at Randalls

## ■ Deposit contains significant intercepts including<sup>1</sup>:

- 8.8 metres at 16.2 g/t Au from 324 metres
- 4.2 metres at 14.9 g/t Au from 305 metres
- 3.0 metres at 11.5 g/t Au from 166 metres

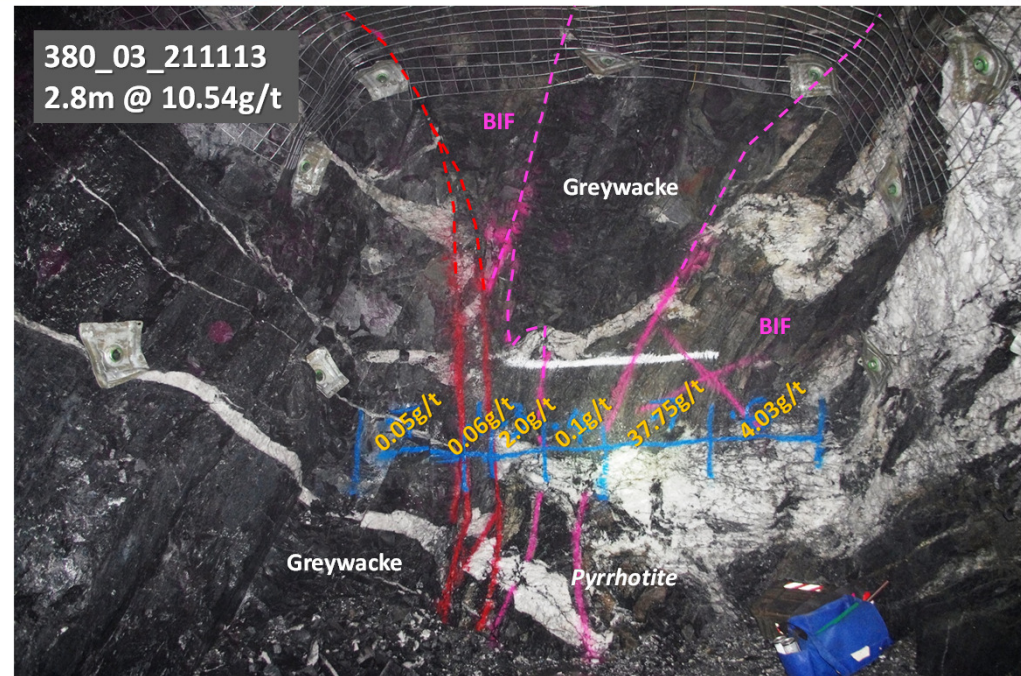
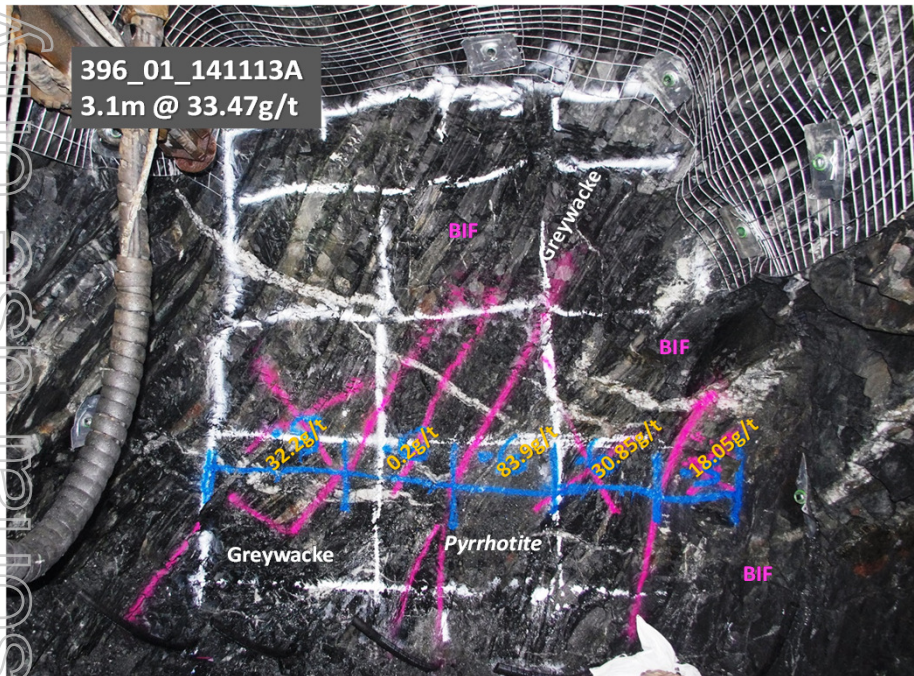
1. Drill intercepts are historic and have been previously announced to the ASX



*Cock-eyed Bob Portal*



# Cock-eyed Bob - Ore Development



Gold mineralisation occurs where quartz ladder vein arrays cut the vertical to sub vertical BIF units  
Highest grade sections of the deposit occur the same as Daisy Milano where the mineralisation contains sulphide rich rock such as pyrrhotite

**8 g/t Au** mined grade January 2014

Development to date has shown footwall mineralisation to be higher grade than hangingwall mineralisation  
Previous historic drilling suggests some intercepts were only assayed on the hangingwall zones



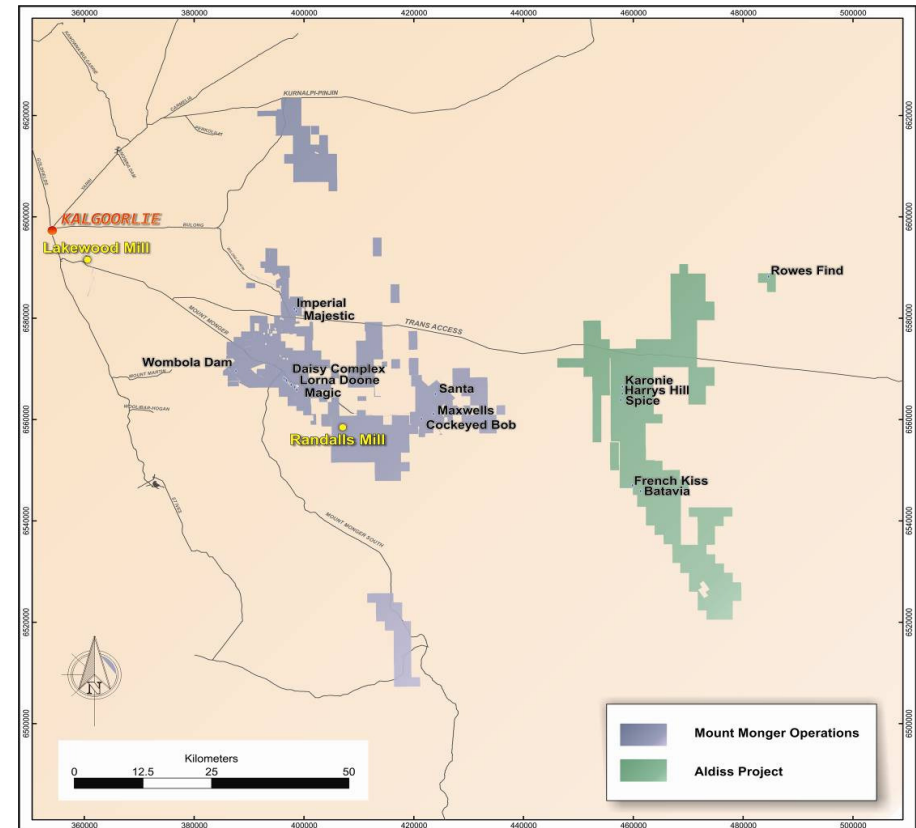
# Short Term Opportunities



**“Mount Monger Operations are sustainable in the lower gold price environment, however several expansion and development options exist should the gold price experience sustained improvement”**

## Multiple options exist :

- commence production from Wombola Dam
- develop Majestic and Imperial deposits
- expand capacity from Cock-eyed Bob
- develop Maxwells underground mine
- advance Magic deposit
- enhance exploration efforts:
  - Daisy upper
  - Lorna Doone
  - Randalls BIF



For personal use only

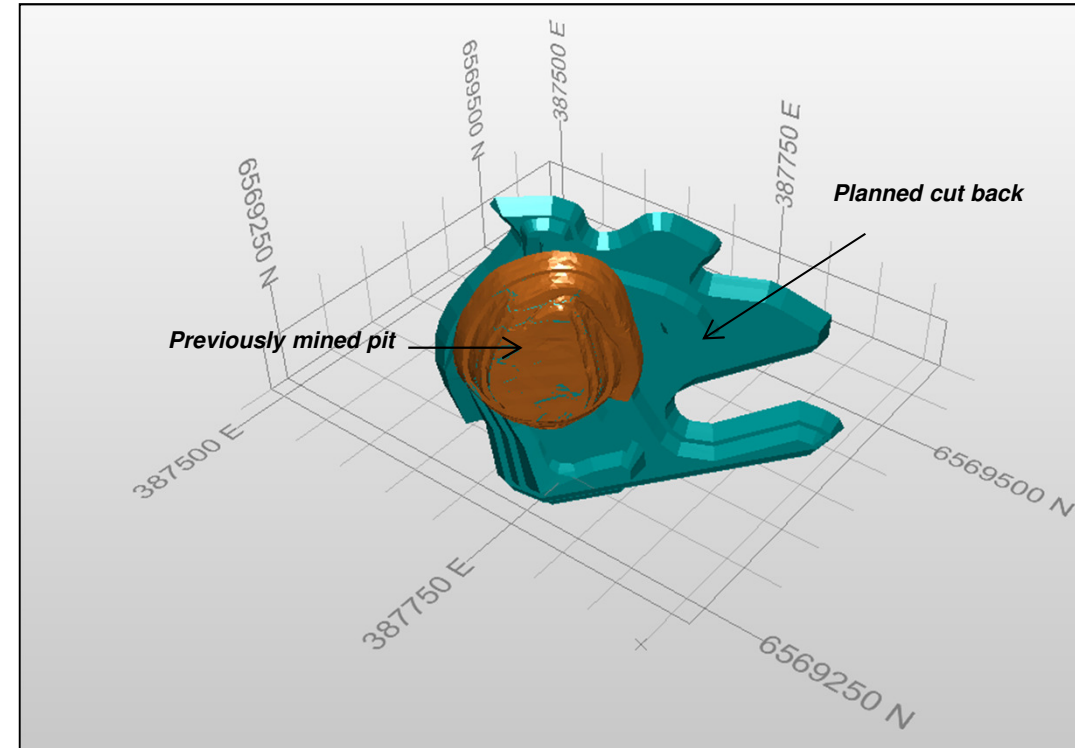
# Wombola Dam



For personal use only

## Wombola Dam Deposit:

- approvals in place
- open pit cut back
- Mine plan<sup>1</sup>: 288kt at 2.50 g/t Au = 23,000 ounces
- currently planned for May 2014
- 7 month project – fed to Lakewood Mill
- Resource: 76,300 oz<sup>1</sup>



1. Refer to Appendix - JORC Resource & Reserve Inventory





# Majestic & Imperial

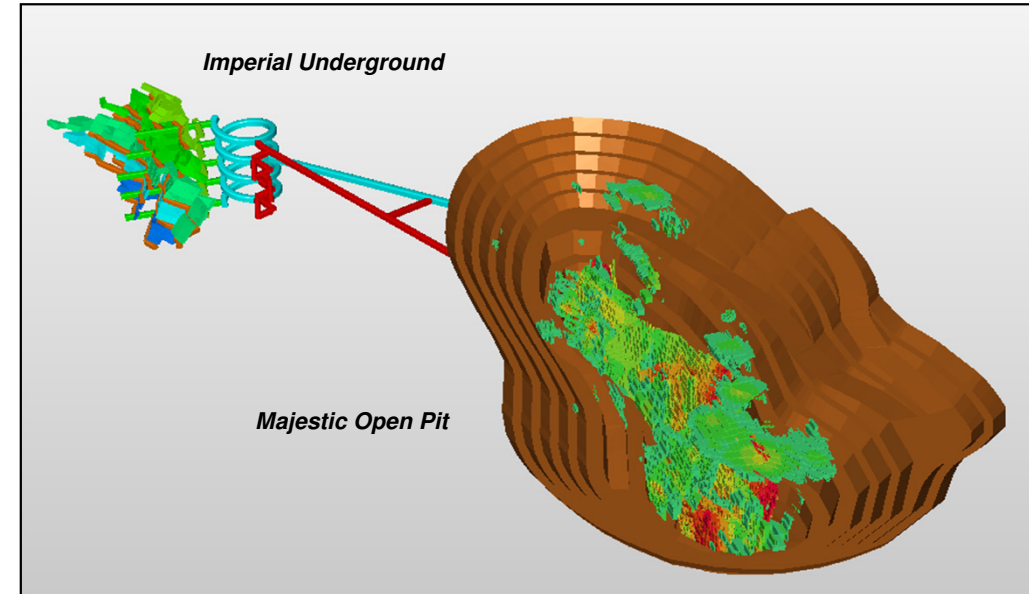
For personal use only

## ■ Majestic Deposit<sup>1</sup>:

- open pit
- Reserve<sup>2</sup>: 645kt at 2.40 g/t Au = 50,000 ounces
- pre-strip currently planned for July 2015

## ■ Imperial Deposit<sup>1</sup>:

- high grade underground mine
- Reserve<sup>2</sup>: 226kt at 7.6 g/t Au = 55,000 oz
- underground production planned for January 2017
- deposit open at depth



1. Silver Lake currently owns 85% of project  
2. Refer to Appendix - JORC Resource & Reserve Inventory



# Magic Deposit

## ■ Magic Deposit:

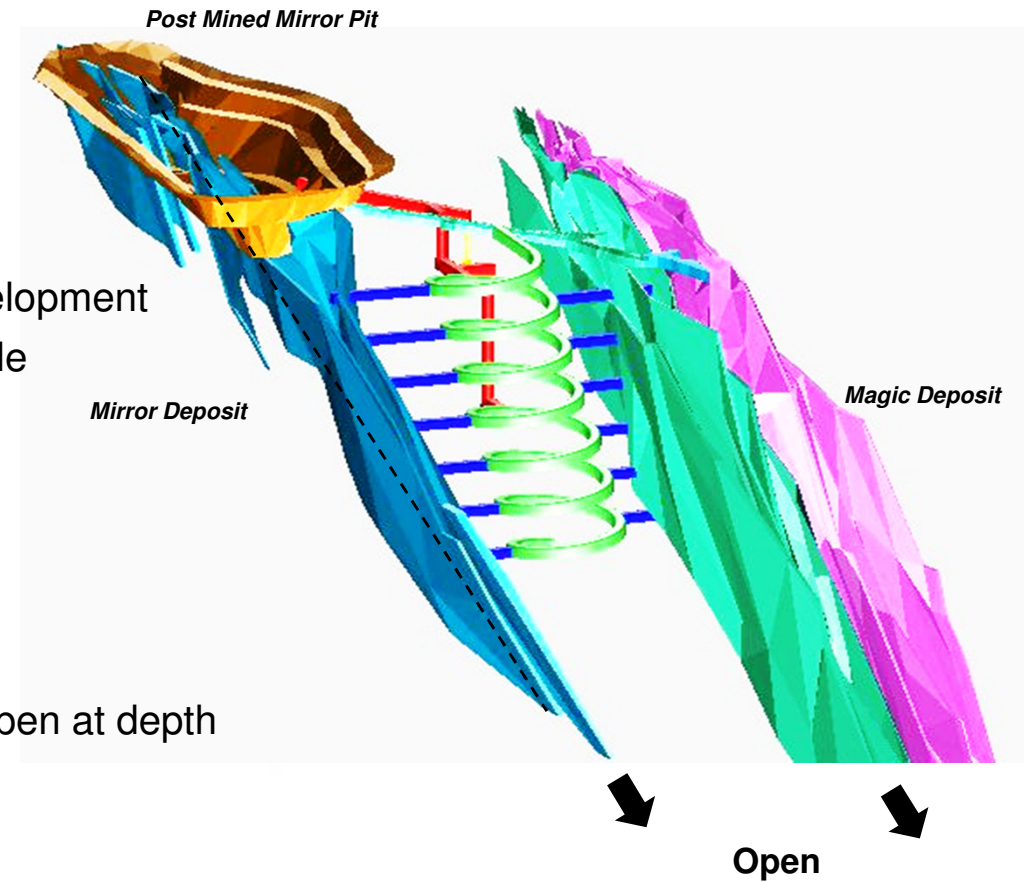
- planned underground mine, bulk mining method
- requires finalisation of metallurgical test work
- preliminary test work 2 oz per tonne concentrate
- A\$800k drilling planned
- A\$24M for floatation circuit & pre-production mine development
- potential to reduce capex if toll treatment option available
- production planned for April 2016

## ■ Mine design complete:

- base case: 690kt at 6.9 g/t Au = 140,000 oz (contained)
- bulk mining method
- Resource: 256,500 oz<sup>1</sup>
- further conversion to reserve highly likely and deposit open at depth
- multiple shear zones

## ■ Significant thick intersections<sup>2</sup>:

- 11.0m at 59.4 g/t Au
- 8.3m at 44.0 g/t Au
- 4.2m at 42.6 g/t Au



1. Refer to Appendix - JORC Resource & Reserve Inventory  
2. Drill intercepts are historic and have been previously announced to the ASX



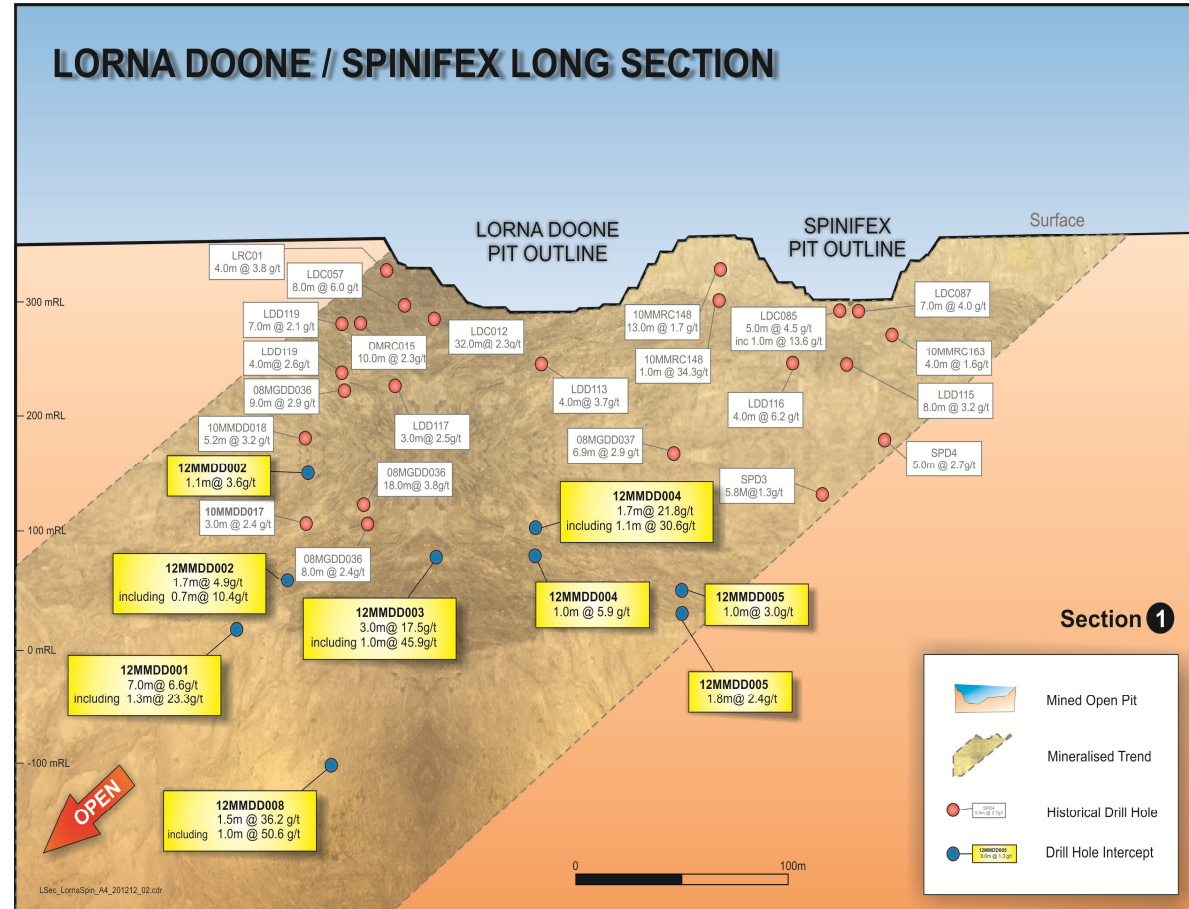
For personal use only

## Lorna Doone Deposit:

- Resource<sup>1</sup>: 1.3mt at 4.3 g/t Au for 176.6koz
- infill drilling planned
- metallurgical test work complete, free milling
- potential for large open pit
- open at depth – potential underground mine

## Significant thick intersections<sup>2</sup>:

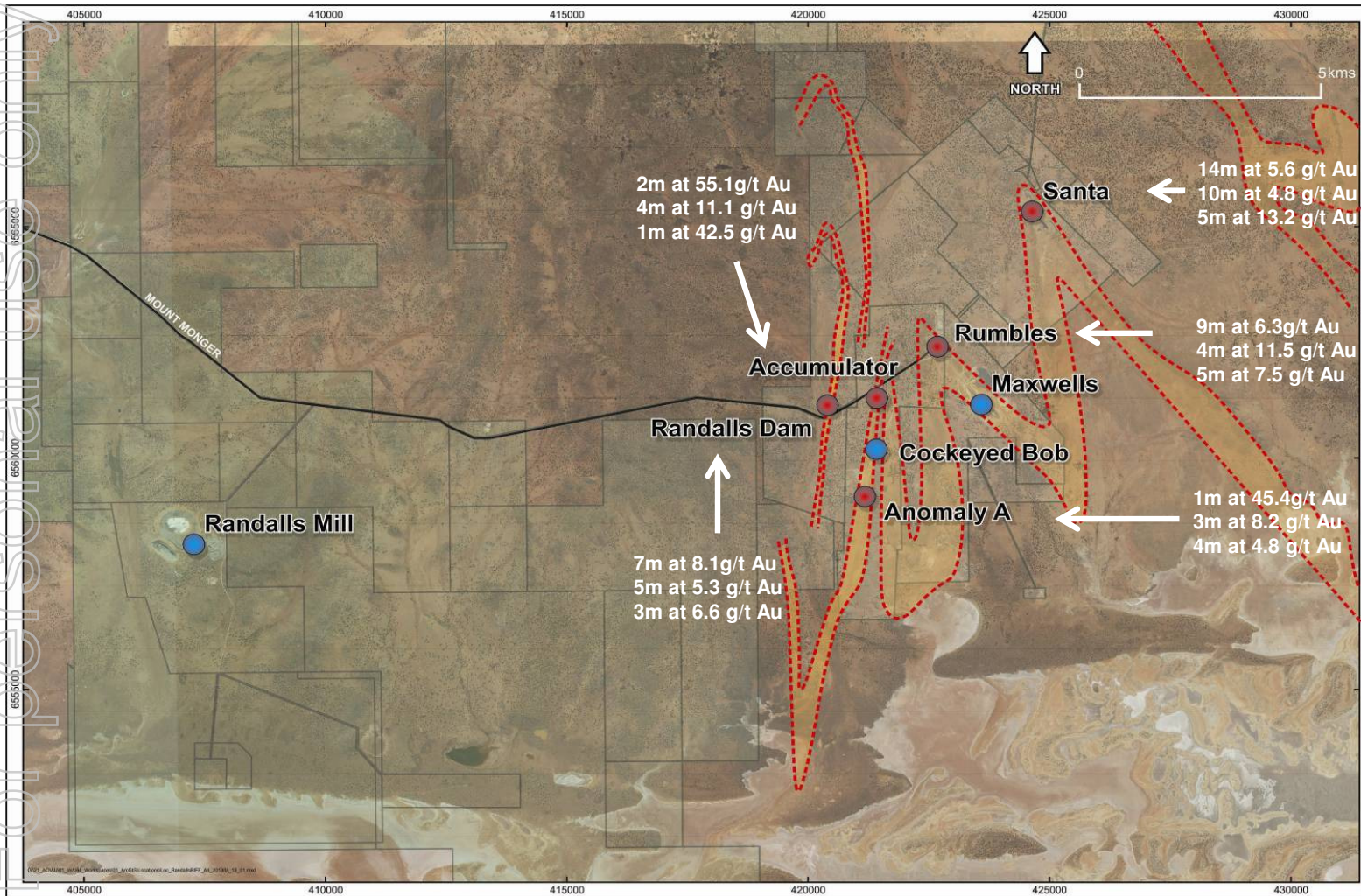
- 3.0m at 17.5 g/t Au
- 1.5m at 36.2 g/t Au
- 7.0m at 6.6 g/t Au
- 1.7m at 21.8 g/t Au



1. Refer to Appendix - JORC Resource & Reserve Inventory  
 2. Drill intercepts are historic and have been previously announced to the ASX



# >30 km of BIF Host Rock at Randalls



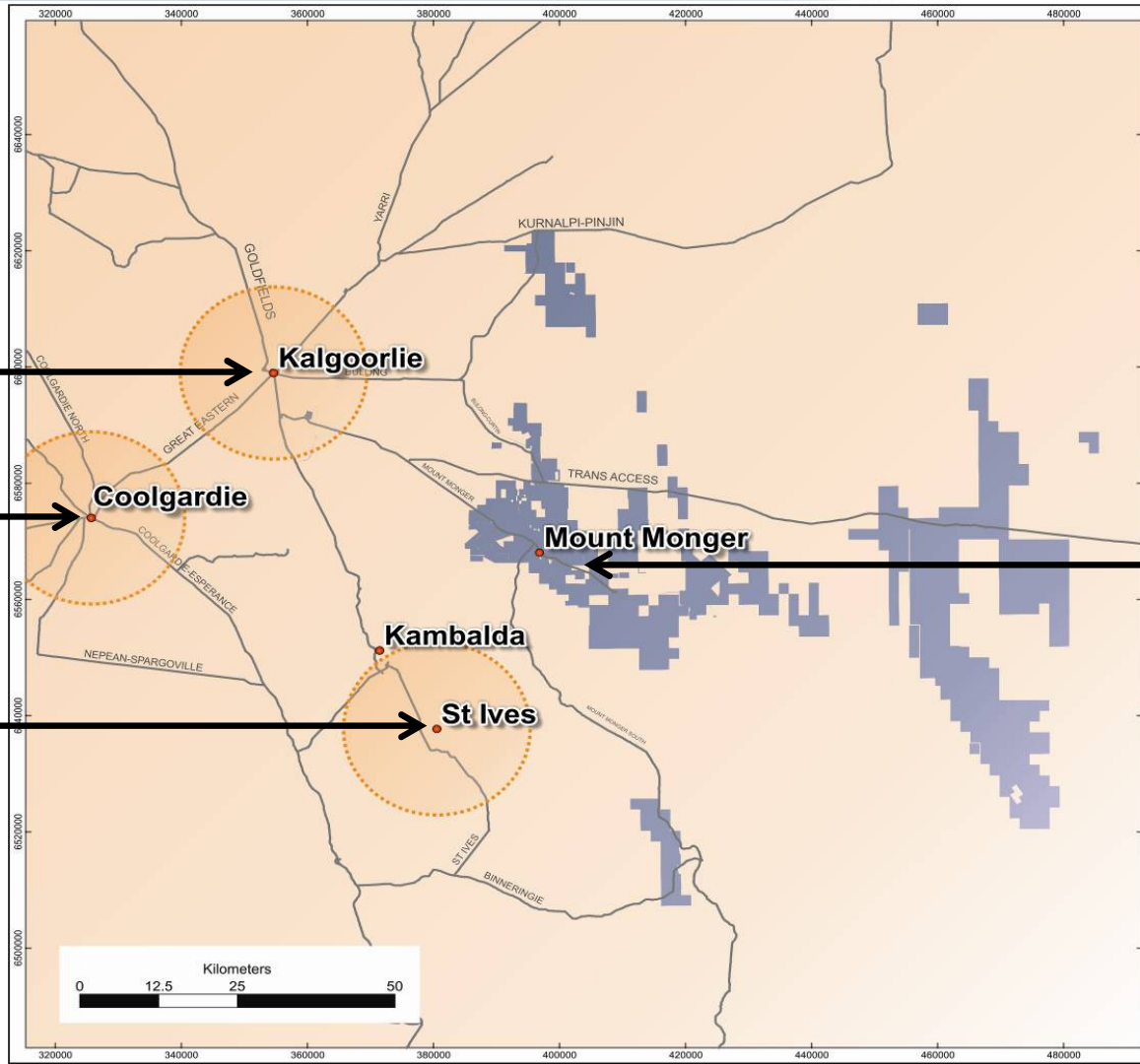
**Significant potential to identify additional ore sources**



# Can Mount Monger Become A Gold Camp?



For personal use only



**Mount Monger Region**  
 Produced 0.9Moz c1897 -2007  
 Produced 0.8Moz 2007 – 2013  
 “Fragmented for 100 years  
 now unified under Silver Lake  
 ownership”

**Golden Mile**  
 Produced 56Moz  
 Res's/Res'v 12Moz

Produced 4Moz  
 Res's/Res'v 2Moz

Produced 11Moz  
 Res's/Res'v 5Moz

Produced 1.7Moz  
**Resources &  
 Reserves = 3.6Moz<sup>1</sup>**



1. Refer to Appendix - JORC Resource & Reserve Inventory  
 Other statistics quoted from public sources

For personal use only



# Murchison

ASX: SLR

ABN: 38 108 779 782

[www.silverlakeresources.com.au](http://www.silverlakeresources.com.au)

# Murchison Gold Operations - Background



- Significant decline in gold price April 2014 – underground development deferred

- 46.0koz produced from Feb to Jan 14 from 7 open pit mines

- Operation is uneconomic at prevailing gold price and requires higher grade ore from underground mines to ensure longevity

- 4 planned underground mines require capital over a 3 year period (~ A\$80 million)

- Strategic review in progress – outcomes announced March 2014 quarter

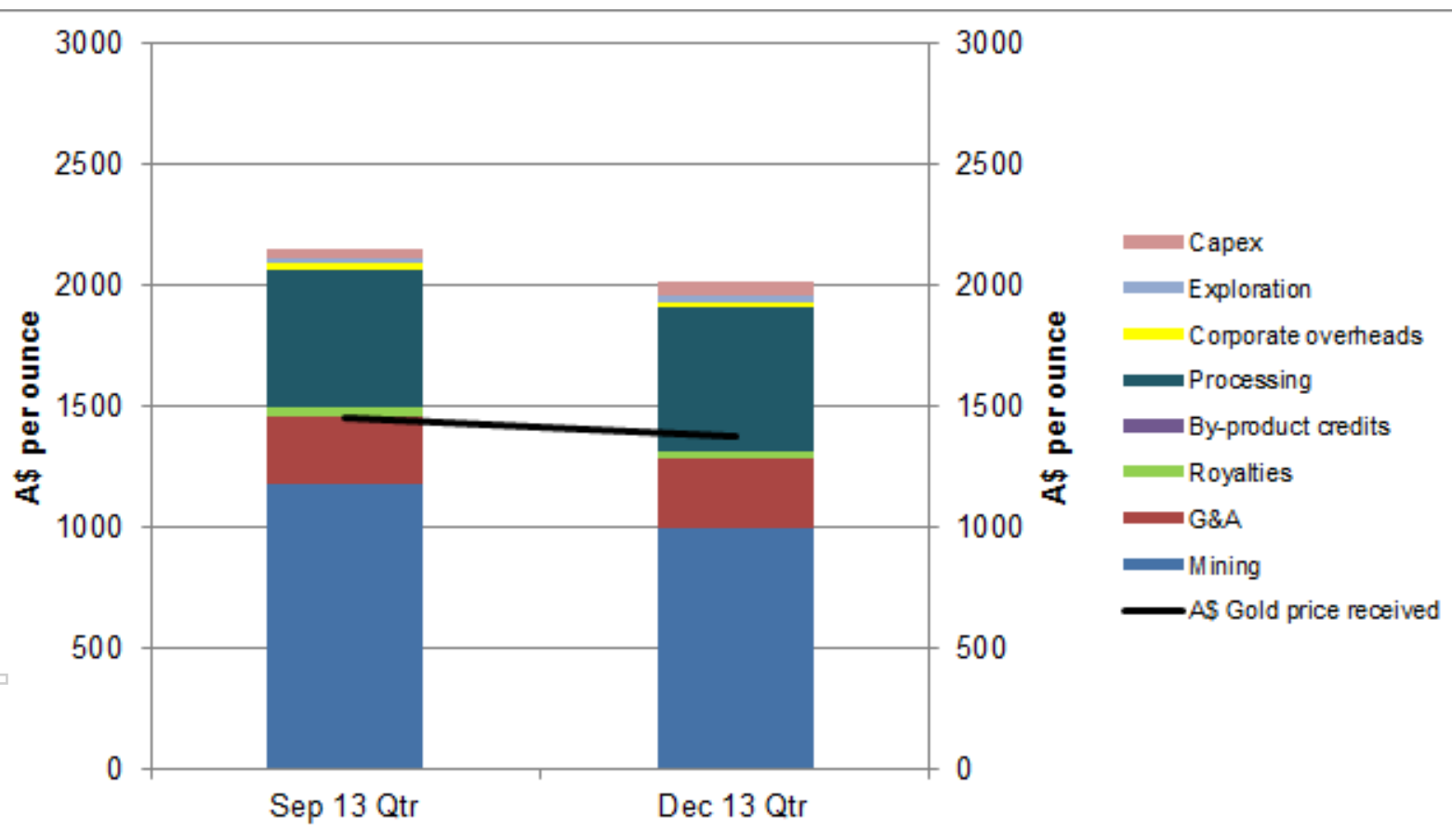
For personal use only



# AISC<sup>1,2,3</sup> - Murchison



**YTD all in sustaining cash cost = A\$2,081 oz**



1. Before non cash items as detailed in the companies quarterly reports
2. September 2013 quarter was the first quarter of commercial production



For personal use only



# Murchison - Overview



For personal use only

■ Located 600 km north of Perth

■ Large project area:

- Tuckabianna, Comet & Moyagee
- 65 km strike on multiple shear zones

■ Historic production:

- 500,000 oz
- Silver Lake production to Dec 13 = 42.4koz

■ Resources & Reserves<sup>1</sup>:

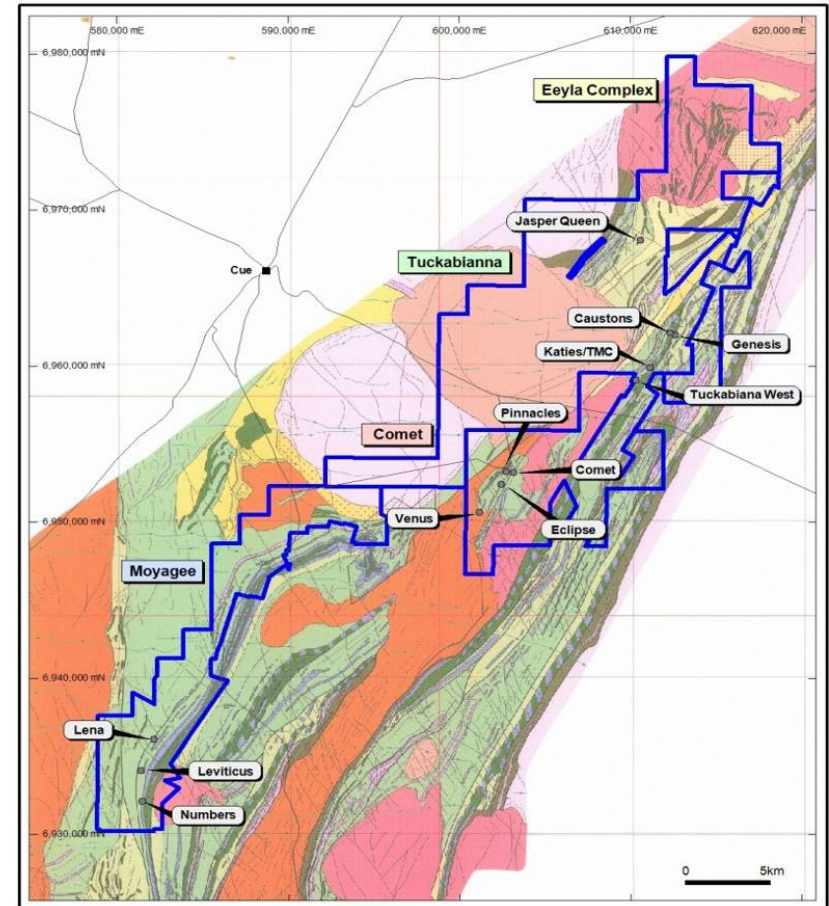
- Resource: 21.0 million tonnes at 2.8 g/t gold for 1.9Moz
- Reserve: 4.6 million tonnes at 2.7 g/t Au for 0.40Moz

■ Surrounded by multi million ounce gold deposits:

- Big Bell (4Moz), Great Fingall (2Moz), Hill 50 (2Moz)
- largest regional deposits were all underground mines

■ Strategic review in progress

- currently a high cost low grade (1.6 g/t Au) open pit operation
- requires underground feed sources to blend with lower grade open pit ore



1. Refer to Appendix - JORC Resource & Reserve Inventory

# 1.2 mtpa Mill



For personal use only

# Murchison Open Pit Mines



## 14 to develop:

- 7 completed
- 1 in progress
- 6 future pits to develop

## Scale:

- combination of medium & small pits

## Strip Ratio:

- 7:1 average over all 14 pits

For personal use only



# Murchison Underground Mines



## 4 to develop:

- Caustons, Comet, Tuckabianna West & Lena

## Accessed via 1 in 7 Decline ramp:

- 5.0 metres wide & 5.5 metres high

## Level spacing:

- 20 vertical metres

## Ore driving:

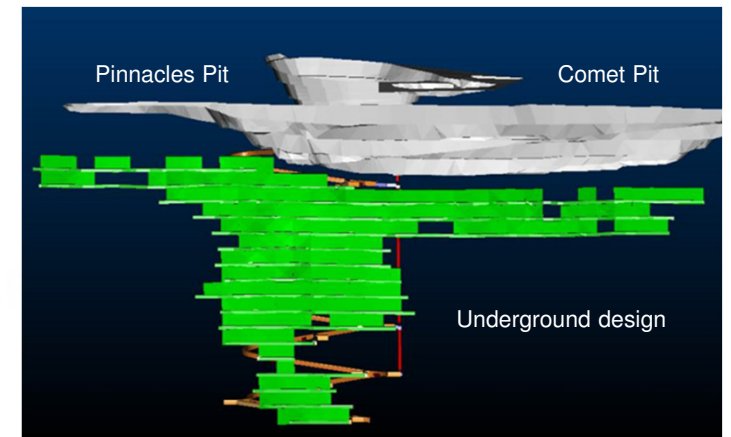
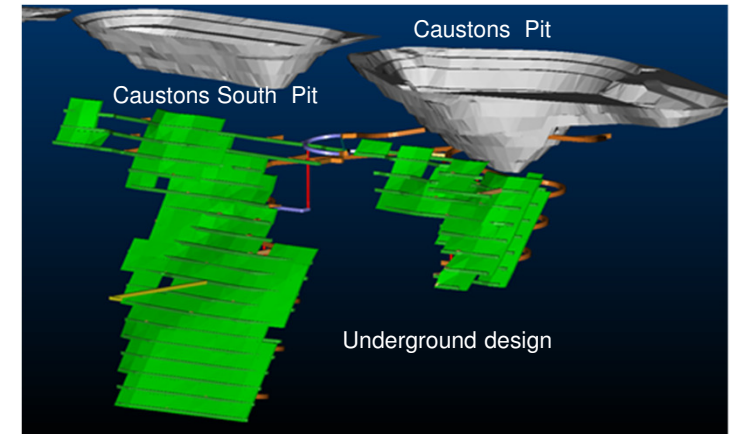
- single access into ore structures
- ore strike driving 3.5 metres wide & 4.0 metres high

## Stoping:

- long hole mining
- unconsolidated fill

## Current status:

- capital deferred due to sharp decline in gold price



For personal use only

For personal use only



**silverlake**  
RESOURCES

# Great Southern

ASX: SLR

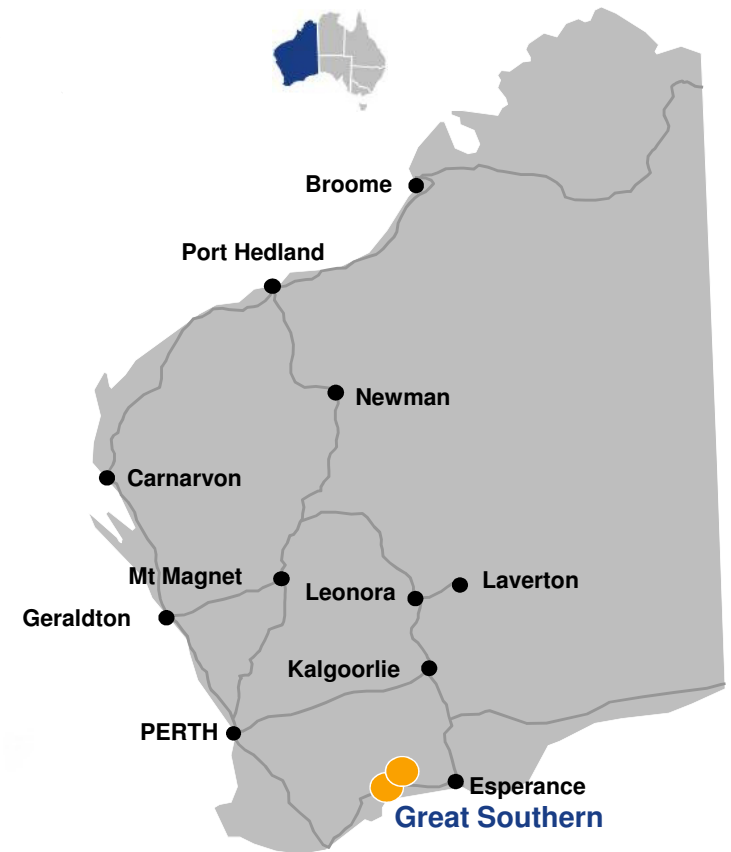
ABN: 38 108 779 782

[www.silverlakeresources.com.au](http://www.silverlakeresources.com.au)

# Great Southern - Overview



<b>Location</b>	450km south east of Perth	
<b>Stage</b>	Advanced exploration	
<b>Regional Geology</b>	Proterozoic & Archean lithologies (Kundip) Volcanic successions (Munglinup)	
<b>Projects</b>	Kundip Trilogy Munglinup	Gold & Copper Polymetallic (Cu, Au, Ag, Zn, Pb) Gold
<b>Resource<sup>1</sup></b>	1.0Moz @ 2.0 g/t Au 10Moz @ 20.5 g/t Ag 95kt @ 0.6% Cu	
<b>Reserves<sup>1</sup></b>	0.44Moz @ 1.8 g/t Au 8.3Moz @ 34.8 g/t Ag 60kt @ 0.8% Cu	
<b>Current Infrastructure</b>	90 person camp Mill site	
<b>Priority Targets</b>	Kundip Mining Centre	
<b>Strategy</b>	Third production centre in FY17 Modular processing strategy Stage 1 Gold Only: Capex~A\$25 million Stage 2 Gold & Copper: Capex~A\$10 million	

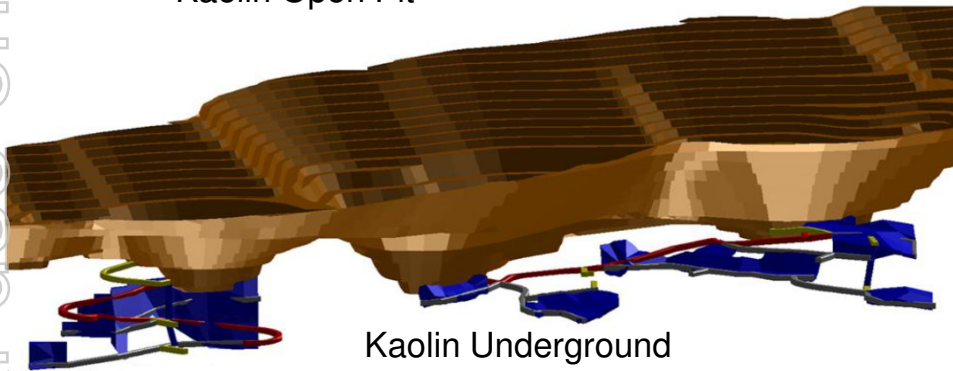


<sup>1</sup>: Refer to appendix - JORC Resource & Reserve Inventory



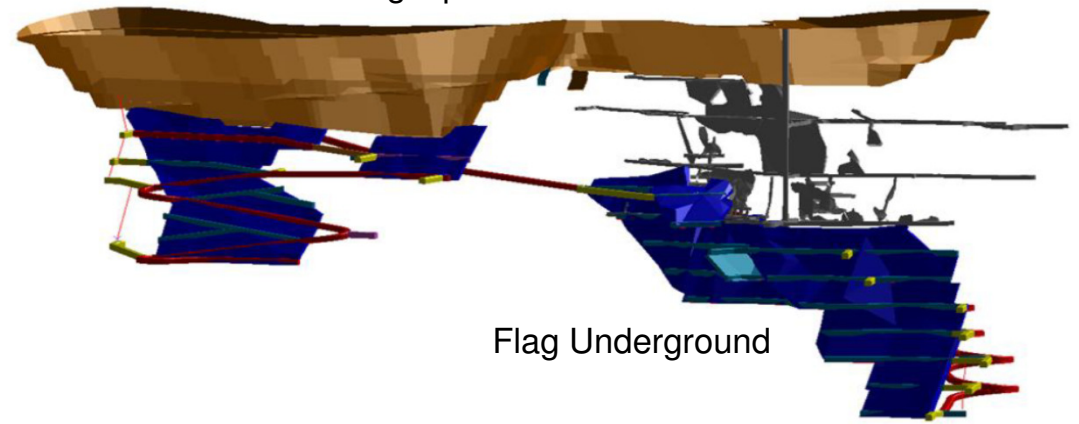
# Kundip Mining Centre - BFS Outputs

Kaolin Open Pit



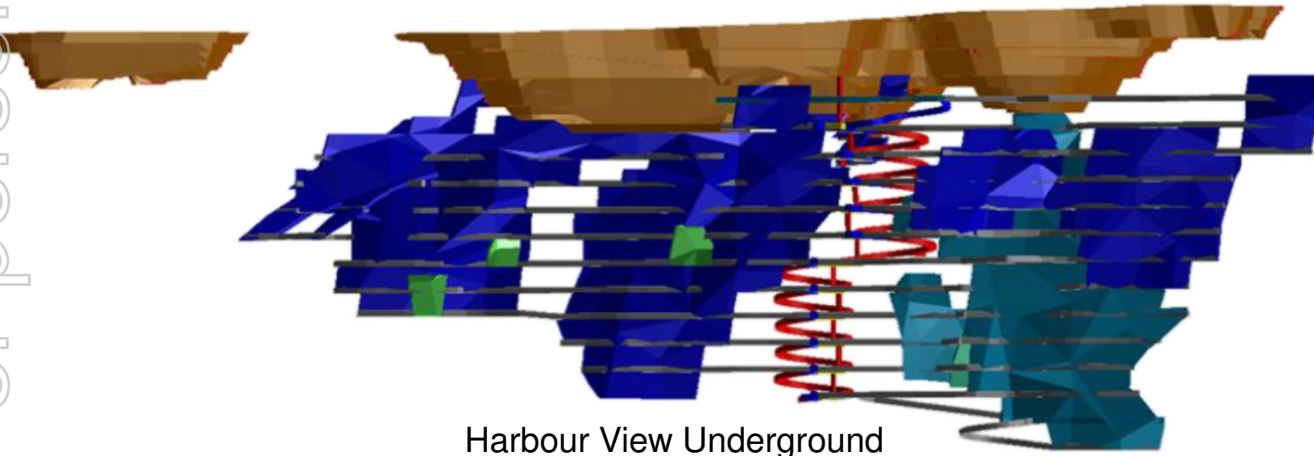
Kaolin Underground

Flag Open Pit



Flag Underground

Harbour View Open Pit



Harbour View Underground

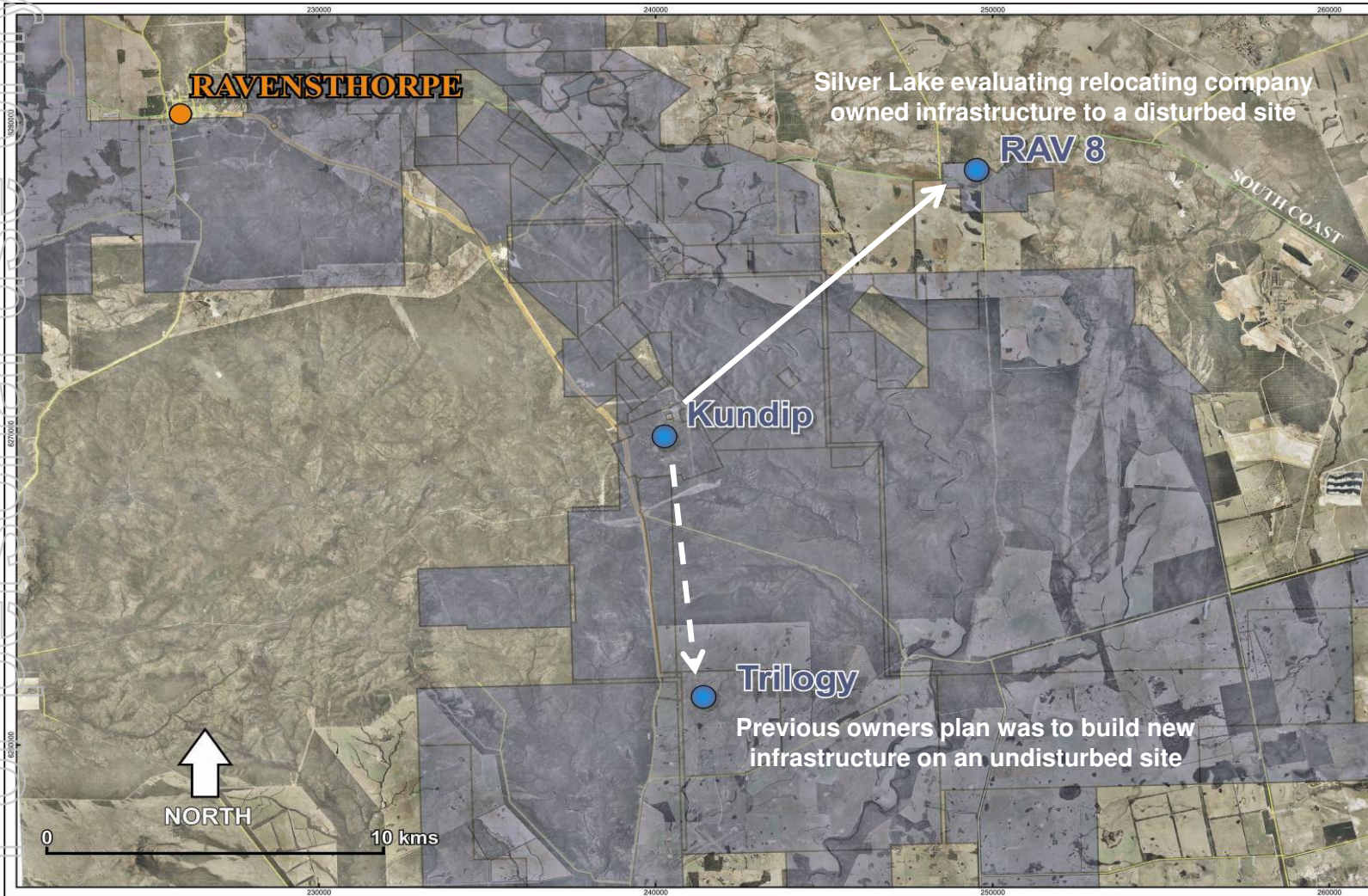
Area	Ore Reserve <sup>1</sup>
Kaolin Open Pit	114,300oz @ 2.8 g/t Au
Kaolin Underground	19,800oz @ 4.4 g/t Au
Harbour View Open Pit	20,600oz @ 3.2 g/t Au
Harbour View Underground	84,400oz @ 3.5 g/t Au
Flag Open Pit	27,000oz @ 4.0 g/t Au
Flag Underground	38,600oz @ 5.0 g/t Au
Total <sup>2</sup>	307,000oz @ 3.4 g/t Au

For personal use only

1: Refer to appendix - JORC Resource & Reserve summary  
Excludes Trilogy  
2: Rounding may give discrepancies in this table



# Great Southern - Aerial View





# Great Southern - RAV 8 Site

For personal use only

Concentrate thickener & concentrate storage shed at Rav 8



Idle 600ktpa mill, drive train and electrics at Lakewood in Kalgoorlie readily available to be relocated to Rav 8



Rav 8 open pit - Potential In-Pit Tailings Storage Facility



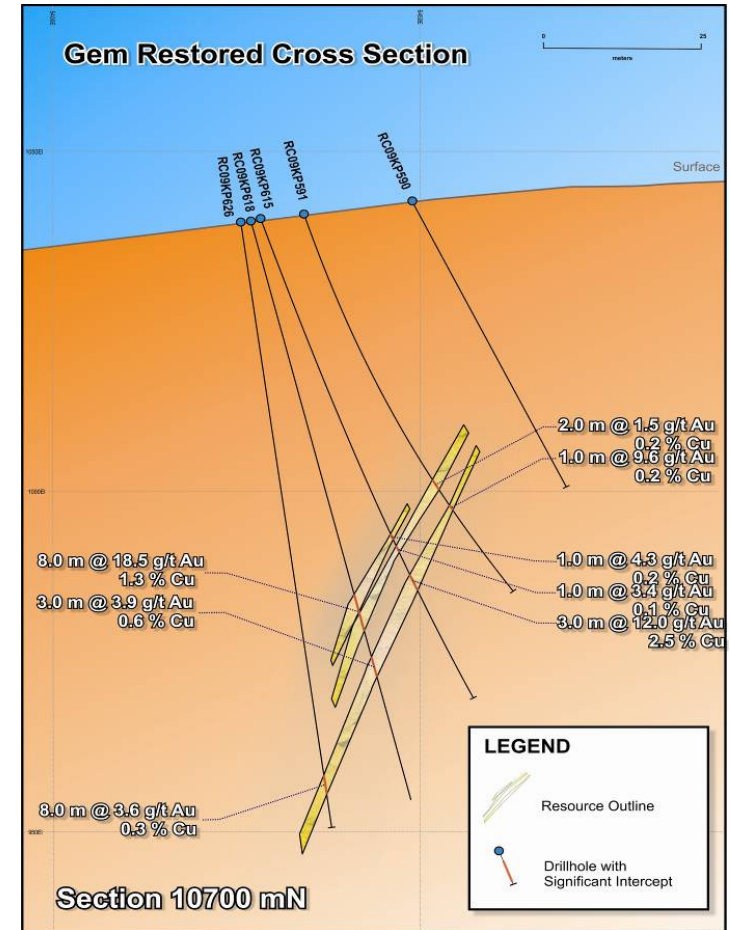
# Great Southern - Exploration

## Kundip Mining Centre:

- numerous targets
- numerous high grade results with no follow up drilling
- mining centre contains gold only and gold & copper deposits
- Current mineralised envelope is 3 km wide & 3 km long

## Limited Meaningful or Systematic Exploration:

- 2,740 holes in the data base
- Only 10% holes drilled deeper than 100 metres
- Resource: 789,000 ounces<sup>1</sup>
- further resource to reserve conversion & resource growth highly likely



<sup>1</sup>: Refer to appendix - JORC Resource & Reserve summary



# Summary



## Growth:

- pipeline of enhancing projects
- ready to develop in an improved & sustained price environment

## Risk diversification:

- multiple mines and mills
- operational flexibility

## Financial:

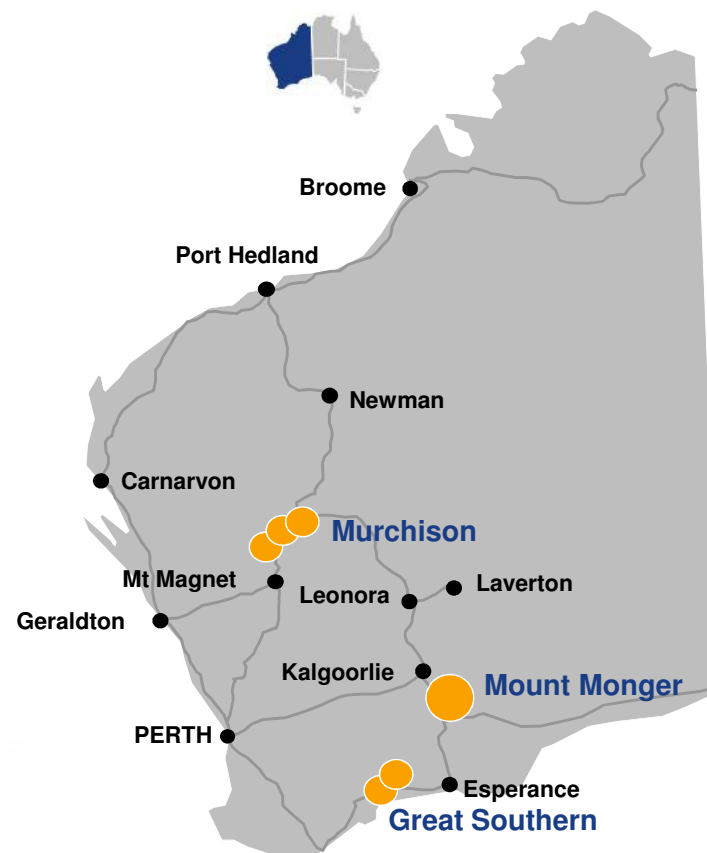
- substantial cost savings delivered through synergies
- restructured the business to protect the downside
- maintained flexibility to capture the upside

## Large gold resource base with significant upside:

- 6.4Moz resource inclusive of 1.7Moz of reserves<sup>1</sup>
- highly prospective, underexplored tenement holding
- long term commitment to exploration

## Outcome:

- enhancing projects to deliver growth



<sup>1</sup> Refer to appendix - JORC Resource & Reserve Inventory



For personal use only



# Presentation Appendix

ASX: SLR

ABN: 38 108 779 782

[www.silverlakeresources.com.au](http://www.silverlakeresources.com.au)

# JORC Gold Resources



As at June 2013 Deposit	Measured Resources			Indicated Resources			Inferred Resources			Total Resources		
	Ore t '000s	Grade g/t Au	Total Oz Au '000s	Ore t '000s	Grade g/t Au	Total Oz Au '000s	Ore t '000s	Grade g/t Au	Total Oz Au '000s	Ore t '000s	Grade g/t Au	Total Oz Au '000s
Mount Monger	629.9	8.4	171.1	4,236.1	6.0	812.8	7,283.8	5.4	1,268.0	12,149.9	5.8	2,251.9
Randalls	155.0	2.1	10.5	7,014.0	2.5	569.3	3,228.0	2.5	257.2	10,397.0	2.5	837.0
Aldiss				6,605.0	2.1	450.9	247.0	2.9	22.8	6,852.0	2.2	473.7
<b>Total Eastern Goldfields</b>	<b>784.9</b>	<b>7.2</b>	<b>181.6</b>	<b>17,855.1</b>	<b>3.2</b>	<b>1,833.0</b>	<b>10,758.8</b>	<b>4.5</b>	<b>1,548.0</b>	<b>29,398.9</b>	<b>3.8</b>	<b>3,562.6</b>
Tuckabianna				5,525.4	2.8	491.2	6,435.4	2.6	530.0	11,960.8	2.7	1,021.2
Comet				3,227.8	3.2	332.9	1,064.0	3.2	108.4	4,291.8	3.2	441.4
Moyagee				1,034.4	2.2	73.8	3,039.2	3.2	309.8	4,073.6	2.9	383.6
Eelya Complex				473.0	1.4	20.9	215.9	1.9	13.4	688.9	1.5	34.3
<b>Total Murchison</b>				<b>10,260.6</b>	<b>2.8</b>	<b>918.8</b>	<b>10,754.5</b>	<b>2.8</b>	<b>961.7</b>	<b>21,015.2</b>	<b>2.8</b>	<b>1,880.5</b>
Kundip				4,390.0	3.4	481.3	4,550.0	2.1	307.2	8,940.0	2.7	788.5
Trilogy	310.0	2.4	23.9	5,750.0	0.7	136.4	981.7	1.7	53.4	7,041.7	0.9	213.8
<b>Total Great Southern</b>	<b>310.0</b>	<b>2.4</b>	<b>23.9</b>	<b>10,140.0</b>	<b>1.9</b>	<b>617.7</b>	<b>5,531.7</b>	<b>2.0</b>	<b>360.6</b>	<b>15,981.7</b>	<b>2.0</b>	<b>1,002.3</b>
<b>Total Silver Lake</b>	<b>1,094.9</b>	<b>5.8</b>	<b>205.5</b>	<b>38,255.8</b>	<b>2.7</b>	<b>3,369.6</b>	<b>27,045.0</b>	<b>3.3</b>	<b>2,870.3</b>	<b>66,395.7</b>	<b>3.0</b>	<b>6,445.4</b>

As at June 2013  
Gold resources are inclusive of ore reserves



# JORC Gold Ore Reserves



As at June 2013 Deposit	Proved Reserves			Probable Reserves			Total Reserves		
	Ore t '000s	Grade g/t Au	Total Oz Au '000s	Ore t '000s	Grade g/t Au	Total Oz Au '000s	Ore t '000s	Grade g/t Au	Total Oz Au '000s
Mount Monger - OP				850.9	2.3	62.7	850.9	2.3	62.7
Mount Monger - UG				1,988.0	6.2	394.4	1,988.0	6.2	394.4
Mount Monger Stockpiles	332.7	1.7	18.4				332.7	1.7	18.4
Randalls - OP				1,958.6	2.1	135.3	1,958.6	2.1	135.3
Randalls - UG				721.5	3.5	81.7	721.5	3.5	81.7
Randalls Stockpiles	1,331.9	1.3	54.1				1,331.9	1.3	54.1
Aldis				1,135.0	2.4	86.5	1,135.0	2.4	86.5
<b>Total Eastern Goldfields</b>	<b>1,664.7</b>	<b>1.4</b>	<b>72.4</b>	<b>6,653.9</b>	<b>3.6</b>	<b>760.6</b>	<b>8,318.6</b>	<b>3.1</b>	<b>833.0</b>

As at June 2013 Deposit	Proved Reserves			Probable Reserves			Total Reserves		
	Ore t '000s	Grade g/t Au	Total Oz Au '000s	Ore t '000s	Grade g/t Au	Total Oz Au '000s	Ore t '000s	Grade g/t Au	Total Oz Au '000s
Tuckabianna - OP				480.5	1.8	28.5	480.5	1.8	28.5
Tuckabianna - UG				1,285.1	3.8	156.5	1,285.1	3.8	156.5
Tuckabianna - Surface Stockpiles	126.7	0.8	3.1				126.7	0.8	3.1
Comet - OP				769.6	2.2	55.0	769.6	2.2	55.0
Comet - UG				921.7	3.6	107.8	921.7	3.6	107.8
Comet - Surface Stockpiles	51.4	0.8	1.3				51.4	0.8	1.3
Moyagee				342.6	2.2	24.7	342.6	2.2	24.7
Eelya Complex				574.0	0.8	14.0	574.0	0.8	14.0
<b>Total Murchison</b>	<b>178.1</b>	<b>0.8</b>	<b>4.5</b>	<b>4373.5</b>	<b>2.7</b>	<b>386.5</b>	<b>4551.5</b>	<b>2.7</b>	<b>390.9</b>
Kundip				2,810.0	3.4	307.2	2,810.0	3.4	307.2
Trilogy	310.0	2.2	22.0	4,320.0	0.8	112.9	4,630.0	0.9	134.9
<b>Total Great Southern</b>	<b>310.0</b>	<b>2.2</b>	<b>22.0</b>	<b>7,130.0</b>	<b>1.8</b>	<b>420.1</b>	<b>7,440.0</b>	<b>1.8</b>	<b>442.1</b>
<b>Total Silver Lake</b>	<b>2,152.7</b>	<b>1.4</b>	<b>98.9</b>	<b>18,157.4</b>	<b>2.7</b>	<b>1,567.2</b>	<b>20,310.1</b>	<b>2.6</b>	<b>1,666.0</b>

As at June 2013



For personal use only

# JORC Base Metal Resources



As at June 2013	Measured Resources					Indicated Resources					Inferred Resources					Total Resources					
	Ore tonnes '000s	Grade	Increment	Total '000s	Unit	Ore tonnes '000s	Grade	Increment	Total '000s	Unit	Ore tonnes '000s	Grade	Increment	Total '000s	Unit	Ore tonnes '000s	Grade	Increment	Total '000s	Unit	
<b>Kundip Project</b>																					
Silver	-	-	g/t Ag	-	oz	4,390.0	2.5	g/t Ag	353.9	oz	4,550.0	2.1	g/t Ag	314.2	oz	8,940.0	2.3	g/t Ag	668.1	oz	
Copper	-	-	% Cu	-	t	4,390.0	0.4	% Cu	15.6	t	4,550.0	0.3	% Cu	14.7	t	8,940.0	0.3	% Cu	30.2	t	
<b>Trilogy Project</b>																					
Silver	310.0	41.2	g/t Ag	406.6	oz	5,750.0	48.0	g/t Ag	8,859.6	oz	180.0	12.0	g/t Ag	73.4	oz	6,240.0	47.0	g/t Ag	9,339.7	oz	
Copper	310.0	0.3	% Cu	0.9	t	5,750.0	1.1	% Cu	62.3	t	180.0	0.8	% Cu	1.4	t	6,240.0	1.0	% Cu	64.6	t	
<b>Hollandaire Project</b>																					
Silver	-	-	-	-	oz	1,926.0	6.2	-	386.4	oz	727.9	4.6	g/t Ag	108.8	oz	2,653.9	5.8	g/t Ag	495.2	oz	
Copper	-	-	-	-	t	1,891.3	2.0	-	37.1	t	122.4	1.4	% Cu	1.6	t	2,013.7	1.9	% Cu	38.7	t	
<b>Total Resource</b>																					
Silver	310.0	40.8	g/t Ag	406.6	oz	12,066.0	24.7	g/t Ag	9,599.9	oz	4,730.0	2.5	g/t Ag	386.6	oz	17,833.9	18.3	g/t Ag	10,502.9	oz	
Copper	310.0	0.3	% Cu	0.9	t	12,031.3	1.0	% Cu	114.9	t	4,852.4	0.4	% Cu	17.7	t	17,193.7	0.8	% Cu	133.5	t	

As at June 2013



For personal use only

# JORC Base Metal Reserves



As at June 2013	Proved Reserves					Probable Reserves					Total Reserves				
	Ore tonnes '000s	Grade	Increment	Total '000s	Unit	Ore tonnes '000s	Grade	Increment	Total '000s	Unit	Ore tonnes '000s	Grade	Increment	Total '000s	Unit
<b>Kundip Project</b>															
Silver	-	-	g/t Ag	-	oz	2,810.0	2.7	g/t Ag	243.9	oz	2,810.0	2.7	g/t Ag	243.9	oz
Copper	-	-	% Cu	-	t	2,810.0	0.4	% Cu	10.7	t	2,810.0	0.4	% Cu	10.7	t
<b>Trilogy Project</b>															
Silver	310.0	45.0	g/t Ag	448.5	oz	4,320.0	55.0	g/t Ag	7,637.7	oz	4,630.0	54.3	g/t Ag	8,086.2	oz
Copper	310.0	0.4	% Cu	1.2	t	4,320.0	1.1	% Cu	48.1	t	4,630.0	1.1	% Cu	49.3	t
<b>Hollandaire Project</b>															
Silver			g/t Ag		oz	574.0	7.9	g/t Ag	145.4	oz	574.0	7.9	g/t Ag	145.4	oz
Copper			% Cu		t	441.8	3.3	% Cu	13.5	t	441.8	1.1	% Cu	13.5	t
<b>Total Reserve</b>															
Silver	310.0	45.0	g/t Ag	448.5	oz	7,130.0	34.4	g/t Ag	7,881.7	oz	8,014.0	32.9	g/t Ag	8,475.6	oz
Copper	310.0	0.4	% Cu	1.2	t	7,130.0	0.8	% Cu	58.8	t	7,881.8	0.9	% Cu	73.5	t

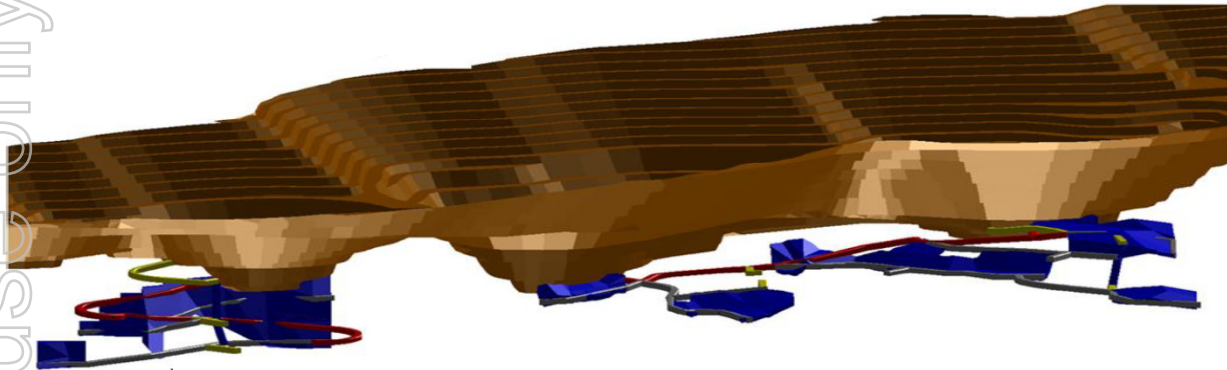
As at June 2013



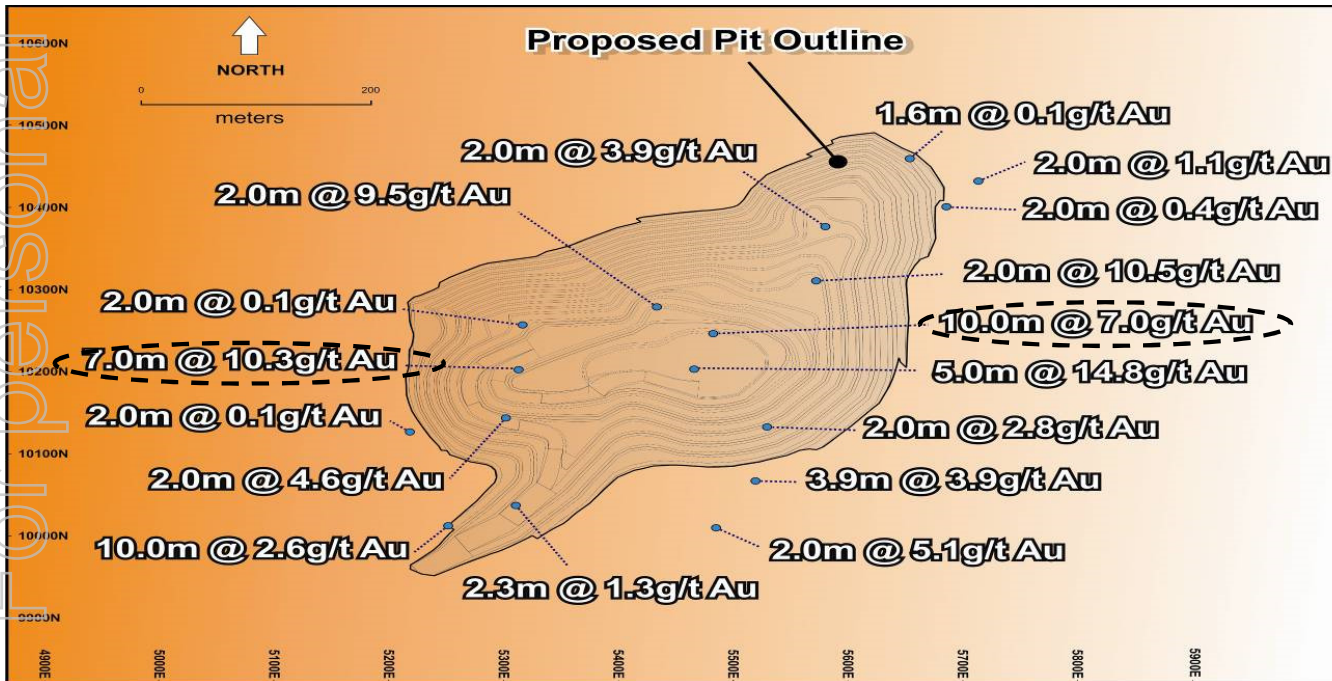
For personal use only



# Kaolin - Gold Deposit



Kaolin	Ore Reserve <sup>1</sup>
Open Pit	114,300oz @ 2.8 g/t Au
Underground	19,800oz @ 4.4 g/t Au



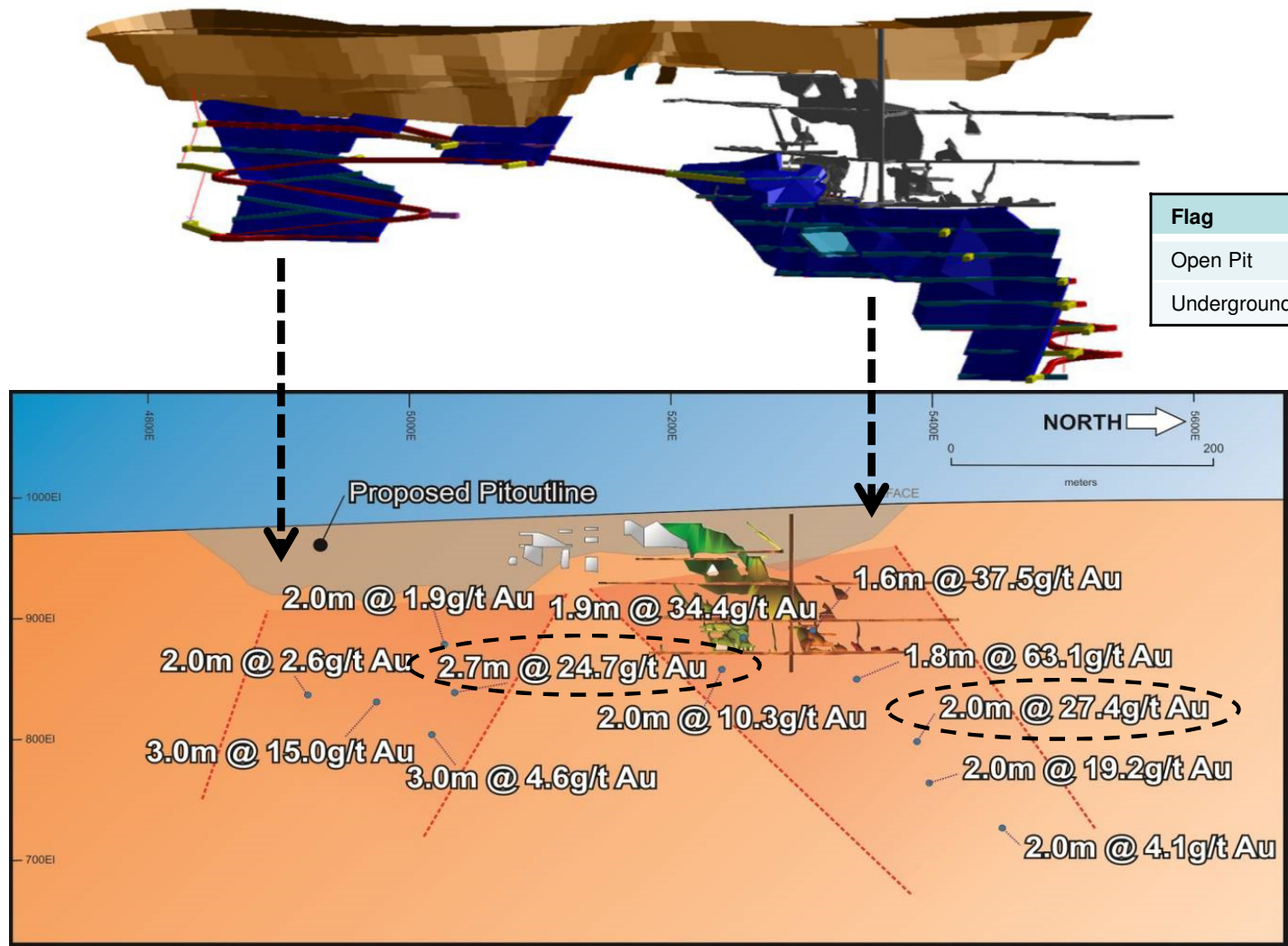
Specimen Stone From Kaolin



<sup>1</sup>: Refer to appendix - JORC Resource & Reserve summary

# Flag - Gold Deposit (low Cu values)

For personal use only



Flag	Ore Reserve <sup>1</sup>
Open Pit	27,000oz @ 4.0 g/t Au
Underground	38,600oz @ 5.0 g/t Au

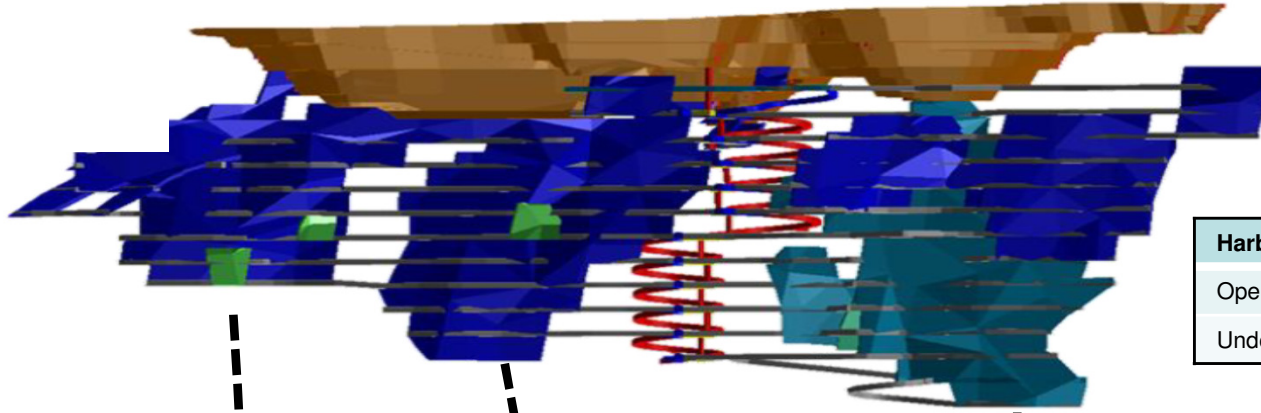
<sup>1</sup>: Refer to appendix - JORC Resource & Reserve summary



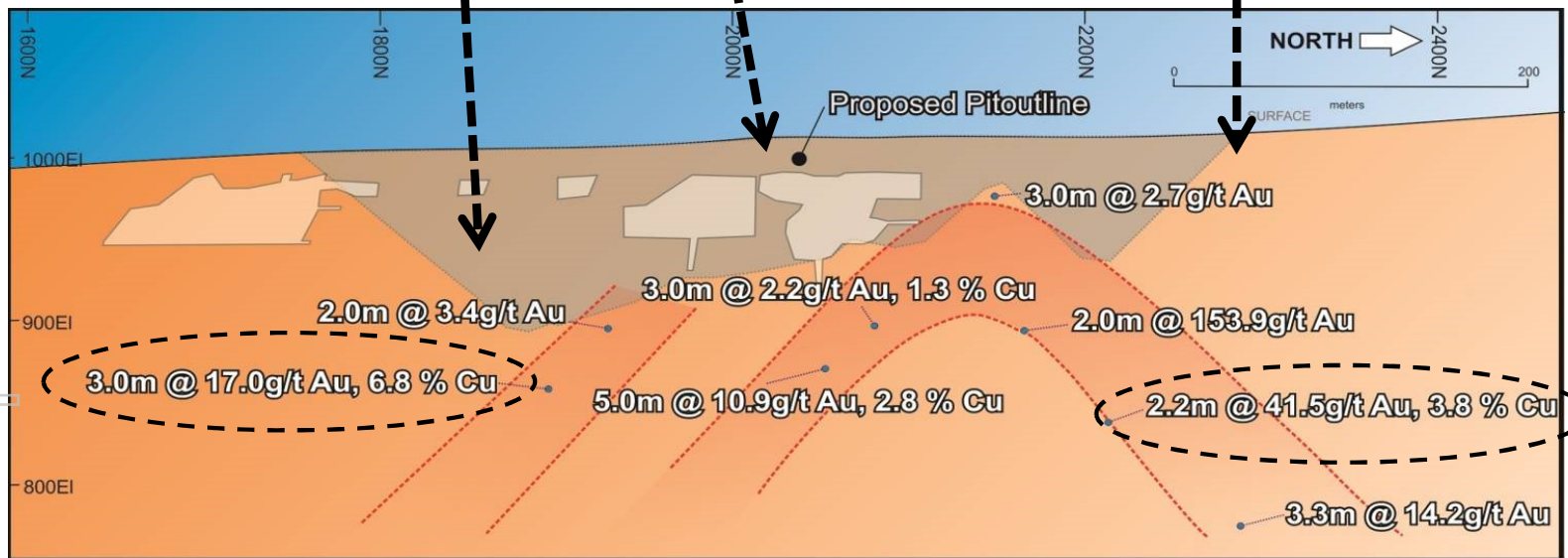
# Harbour View - Gold & Copper Deposit



For personal use only



Harbour View	Ore Reserve <sup>1</sup>
Open Pit	20,600oz @ 3.2 g/t Au
Underground	84,400oz @ 3.5 g/t Au



Base metals circuit funded from cashflow generated from free milling gold at Kaolin & Flag

<sup>1</sup>: Refer to appendix - JORC Resource & Reserve summary



# Hollandaire PFS



For personal use only

## Open pit ore reserve<sup>1</sup> (2 year project):

- 13,500 Cu tonnes
- 13,800 Au oz
- 145,500 Ag oz

## Stage 1 - mining of gold zone

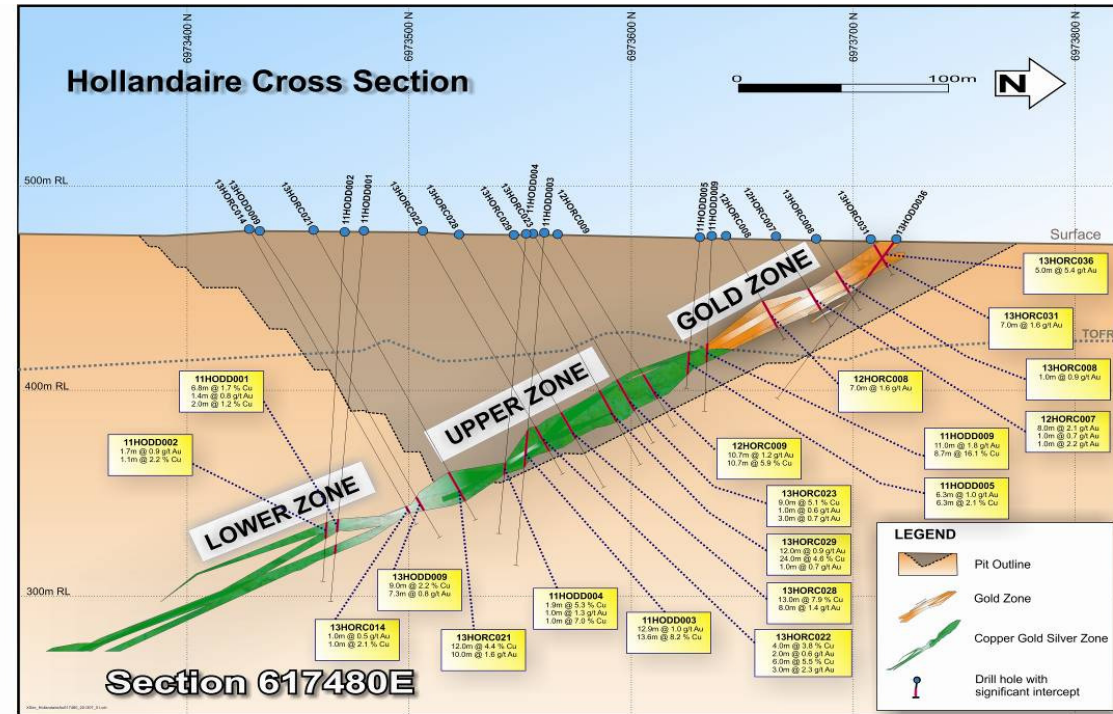
## Stage 2 - mining of upper zone

## Capex: (± 30%)

- Base metals circuit A\$25.0M
- Clearing & grubbing A\$ 5.1M
- Rehabilitation A\$ 0.8M
- Contingency A\$ 4.5M
- Total A\$35.5M

## Outcome:

- pays back base metals circuit
- modest cash surplus
- excludes underground potential in lower zone & Hollandaire West
- funds processing option for further resource to reserve conversion & additional base metals exploration success within the Eelya Complex



1. Refer to Appendix - JORC Resource & Reserve Inventory



# Hollandaire - Next Steps



## Design:

- finalise process design

## Further evaluation on upside potential:

- underground at Hollandaire lower zone
- underground at Hollandaire West
- resource to reserve conversion

## Exploration:

- continue within the Eelya Complex
- generate scale

## High quality concentrate specifications:

Composite	Concentrate Grade								Recovery (%)							
	Cu (%)	Au (ppm)	Ag (ppm)	Fe (%)	As (ppm)	Bi (ppm)	S (%)	Pb (%)	Cu	Au	Ag	Fe	As	Bi	S	Pb
High Grade	28.0	3.00	75	29.0	70	295	41.0	0.44	95.0	66.0	91.0	50.0	56.0	85.0	55.0	88.0
Low Grade	26.0	3.10	78	28.0	6		32.0		98.0	90.0	85.0	17.0	9.0		19.0	

