

June 26, 2014
ASX Release



AUSQUEST RECEIVES FIRST PERU DRILLING APPROVAL

Paves the way for drilling of large buried porphyry copper prospect at Cardonal Two further approvals expected early next Quarter

AusQuest Limited (ASX: AQD) is pleased to advise that it has received drilling approvals from the Ministry of Energy and Mines (MEM) in Peru for the first of three major porphyry copper-gold prospects identified by the Company for drill testing this year.

The Company has received approval for drilling at the 100%-owned **Cardonal Prospect**, located east of the town of Ilo in southern Peru.

The Cardonal prospect is a large buried porphyry copper target identified by mineralised diorite dykes and breccias at surface, containing anomalous levels of copper (100ppm up to 0.74% Cu) and associated propylitic alteration.

An extensive IP chargeability anomaly (>6km²), reflecting probable sulphide mineralisation at depths of ~300m to 400m, supports the concept of a buried porphyry copper target immediately south of the dykes. A total of ten drill sites have been approved for drilling at Cardonal (*Figure 2*).

The Company's two remaining drilling applications at the **Puite** and **Lana** prospects are now expected to be approved early in the next Quarter.

AusQuest's Managing Director, Mr Graeme Drew, said the receipt of the drilling approvals was expected to increase the level of interest in the Company's projects from mining companies both currently operating and looking to operate in southern Peru.

"These are high quality copper-gold targets and the drilling clearances will significantly improve our chances of attracting a suitable partner into the projects to help fund the upcoming drilling programs," Mr Drew said.

New Porphyry Copper Prospect Identified

AusQuest also continues to expand its copper-gold portfolio in Peru with ongoing regional and generative project exploration activities.

Initial mapping and sampling at the **Ceniceros Rojos** Project, located ~20km north of the town of Camana was recently completed and has identified early indications of possible porphyry copper mineralisation with a number of samples returning anomalous copper assays ranging from 100ppm Cu up to 1.5% Cu from diorite dykes and veins within the basement granites and gneisses (*Figure 1*).

For personal use only

The Cenicerros Rojos Project was originally identified by interpretation of the Company's proprietary aeromagnetic data which showed possible alteration around the margin of a late Cretaceous granite pluton.

Further evaluation of this area is now being planned to identify targets for geophysical surveys and subsequent drilling.

Mr Drew said the Company continued to be encouraged by the potential of the region to host major copper and gold resources and was looking forward to the commencement of drilling operations in Peru.

Graeme Drew
Managing Director

COMPETENT PERSON'S STATEMENT

The details contained in this report that pertain to exploration results are based upon information compiled by Mr Graeme Drew, a full-time employee of AusQuest Limited. Mr Drew is a Fellow of the Australasian Institute of Mining and Metallurgy (AUSIMM) and has sufficient experience in the activity which he is undertaking to qualify as a Competent Person as defined in the December 2012 edition of the "Australasian Code for Reporting of Exploration Results, Mineral Resources and Ore Reserves" (JORC Code). Mr Drew consents to the inclusion in the report of the matters based upon his information in the form and context in which it appears.

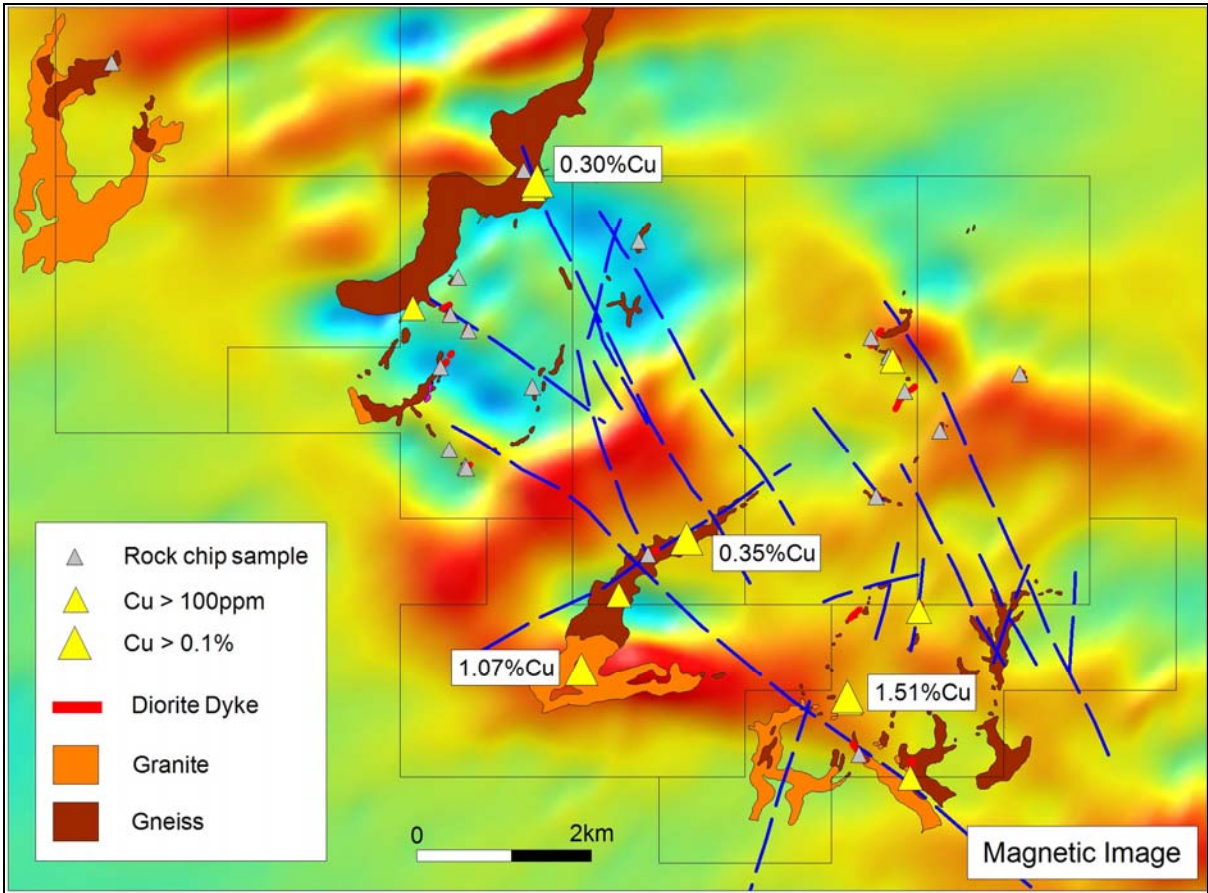


Figure 1 ; Cenicerros Rojos Project – reconnaissance mapping and sampling

For personal use only

For personal use only

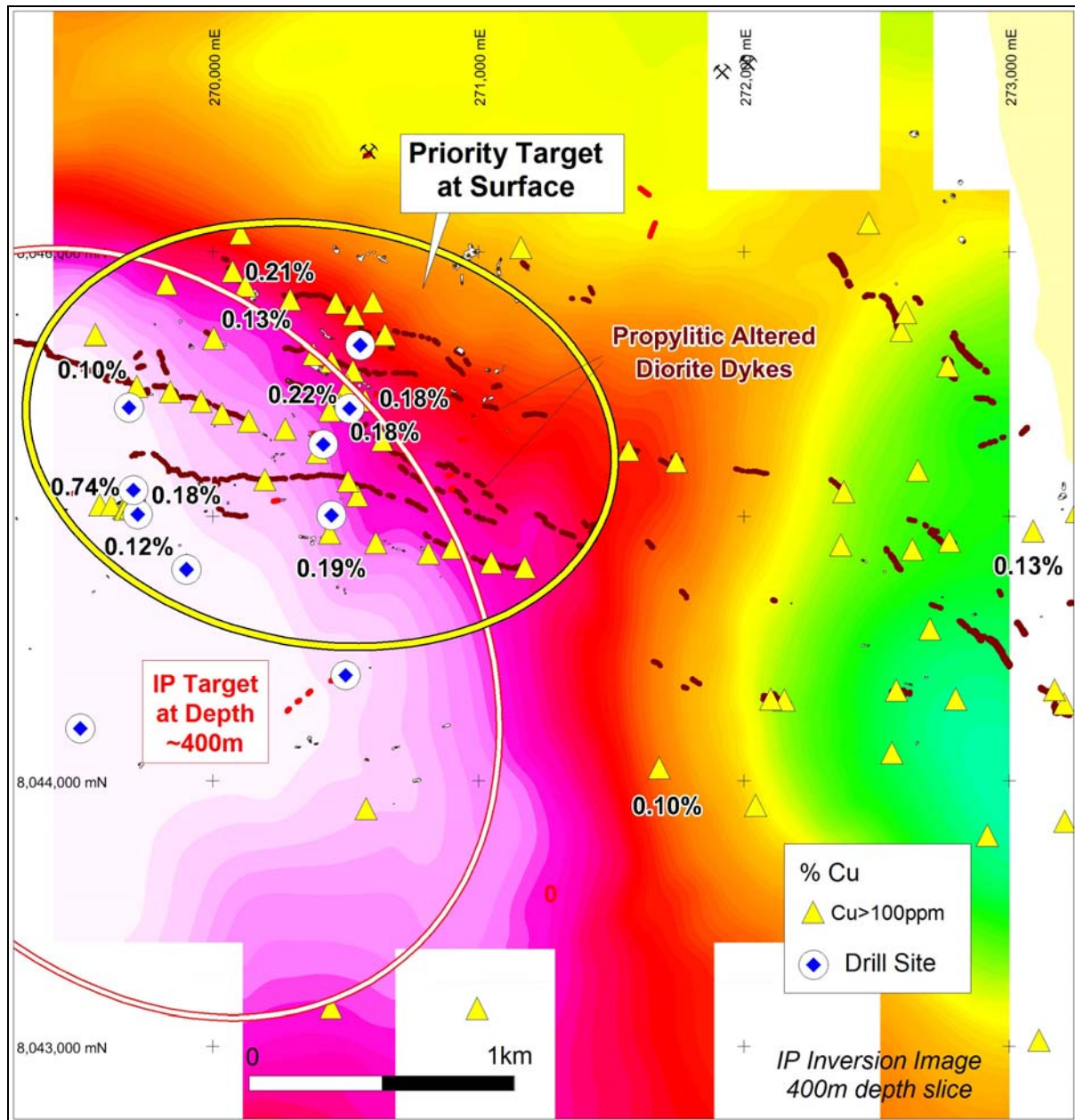


Figure 2: Cardonal Project showing planned drilling

JORC Code, 2012 Edition – Table 1 AusQuest Rock-Chip Sampling Ceniceros Rojos

Section 1 Sampling Techniques and Data

(Criteria in this section apply to all succeeding sections.)

Criteria	JORC Code explanation	Commentary
Sampling techniques	<ul style="list-style-type: none"> Nature and quality of sampling (eg cut channels, random chips, or specific specialised industry standard measurement tools appropriate to the minerals under investigation, such as down hole gamma sondes, or handheld XRF instruments, etc). These examples should not be taken as limiting the broad meaning of sampling. Include reference to measures taken to ensure sample representivity and the appropriate calibration of any measurement tools or systems used. Aspects of the determination of mineralisation that are Material to the Public Report. In cases where 'industry standard' work has been done this would be relatively simple (eg 'reverse circulation drilling was used to obtain 1 m samples from which 3 kg was pulverised to produce a 30 g charge for fire assay'). In other cases more explanation may be required, such as where there is coarse gold that has inherent sampling problems. Unusual commodities or mineralisation types (eg submarine nodules) may warrant disclosure of detailed information. 	<ul style="list-style-type: none"> Rock chip sampling comprises the collection of rocks, usually by hammering an outcrop, with samples being of variable size and quality. Sample locations are recorded by hand-held GPS. Reconnaissance sampling is not systematic, with samples of potentially mineralized rock being the main focus of the program.
Drilling techniques	<ul style="list-style-type: none"> Drill type (eg core, reverse circulation, open-hole hammer, rotary air blast, auger, Bangka, sonic, etc) and details (eg core diameter, triple or standard tube, depth of diamond tails, face-sampling bit or other type, whether core is oriented and if so, by what method, etc). 	<ul style="list-style-type: none"> Not applicable – surface sampling only
Drill sample recovery	<ul style="list-style-type: none"> Method of recording and assessing core and chip sample recoveries and results assessed. Measures taken to maximise sample recovery and ensure representative nature of the samples. Whether a relationship exists between sample recovery and grade and whether sample bias may have occurred due to preferential loss/gain of fine/coarse material. 	<ul style="list-style-type: none"> Not applicable – surface sampling only
Logging	<ul style="list-style-type: none"> Whether core and chip samples have been geologically and geotechnically logged to a level of detail to support appropriate Mineral Resource estimation, mining studies and metallurgical studies. Whether logging is qualitative or quantitative in nature. Core (or costean, channel, etc) photography. The total length and percentage of the relevant intersections logged. 	<ul style="list-style-type: none"> Not applicable – reconnaissance surface sampling only

Criteria	JORC Code explanation	Commentary
Sub-sampling techniques and sample preparation	<ul style="list-style-type: none"> • If core, whether cut or sawn and whether quarter, half or all core taken. • If non-core, whether riffled, tube sampled, rotary split, etc and whether sampled wet or dry. • For all sample types, the nature, quality and appropriateness of the sample preparation technique. • Quality control procedures adopted for all sub-sampling stages to maximise representivity of samples. • Measures taken to ensure that the sampling is representative of the in situ material collected, including for instance results for field duplicate/second-half sampling. • Whether sample sizes are appropriate to the grain size of the material being sampled. 	<ul style="list-style-type: none"> • No sub-sampling of rock-chip samples was undertaken • Approximately 2 kg of rock was collected from each site sampled which is regarded as representative of the outcrop being sampled • Mineralised and altered rocks were the target of this program.
Quality of assay data and laboratory tests	<ul style="list-style-type: none"> • The nature, quality and appropriateness of the assaying and laboratory procedures used and whether the technique is considered partial or total. • For geophysical tools, spectrometers, handheld XRF instruments, etc, the parameters used in determining the analysis including instrument make and model, reading times, calibrations factors applied and their derivation, etc. • Nature of quality control procedures adopted (eg standards, blanks, duplicates, external laboratory checks) and whether acceptable levels of accuracy (ie lack of bias) and precision have been established. 	<ul style="list-style-type: none"> • Rock chip samples are crushed and pulverized to 85% minus 75 microns, then a representative sub-sample is collected for digestion using a 4 acid digest, followed by analysis by ICP-MS and/or AES. Gold are assayed by 30 g fire assay with AAS finish. • In laboratory QAQC data is reviewed for all assay jobs.
Verification of sampling and assaying	<ul style="list-style-type: none"> • The verification of significant intersections by either independent or alternative company personnel. • The use of twinned holes. • Documentation of primary data, data entry procedures, data verification, data storage (physical and electronic) protocols. • Discuss any adjustment to assay data. 	<ul style="list-style-type: none"> • Rock-chip sampling is compiled into Excel spreadsheets for merging with assay data when it becomes available. • Digital data is regularly backed-up on the company's servers.
Location of data points	<ul style="list-style-type: none"> • Accuracy and quality of surveys used to locate drill holes (collar and down-hole surveys), trenches, mine workings and other locations used in Mineral Resource estimation. • Specification of the grid system used. • Quality and adequacy of topographic control. 	<ul style="list-style-type: none"> • Sample locations are recorded using GPS to within 5 metres accuracy. • The grid projection used is PSAD 56 Zone 18S • Topographic control is obtained from GPS readings or topographic maps and is considered adequate for current needs
Data spacing and distribution	<ul style="list-style-type: none"> • Data spacing for reporting of Exploration Results. • Whether the data spacing and distribution is sufficient to establish the degree of geological and grade continuity appropriate for the Mineral Resource and Ore Reserve estimation procedure(s) and classifications applied. • Whether sample compositing has been applied. 	<ul style="list-style-type: none"> • Rock chip sampling is irregular and based on availability of suitable outcrop.

Criteria	JORC Code explanation	Commentary
<i>Orientation of data in relation to geological structure</i>	<ul style="list-style-type: none"> • <i>Whether the orientation of sampling achieves unbiased sampling of possible structures and the extent to which this is known, considering the deposit type.</i> • <i>If the relationship between the drilling orientation and the orientation of key mineralised structures is considered to have introduced a sampling bias, this should be assessed and reported if material.</i> 	<ul style="list-style-type: none"> • Not applicable to reconnaissance rock chip sampling
<i>Sample security</i>	<ul style="list-style-type: none"> • <i>The measures taken to ensure sample security.</i> 	<ul style="list-style-type: none"> • Samples are securely tied/sealed in the field, followed by packing into larger sealed plastic bags for transport to the laboratory.
<i>Audits or reviews</i>	<ul style="list-style-type: none"> • <i>The results of any audits or reviews of sampling techniques and data.</i> 	<ul style="list-style-type: none"> • No audits or reviews have been carried out on the sampling to date.

Section 2 Reporting of Exploration Results

(Criteria listed in the preceding section also apply to this section.)

Criteria	JORC Code explanation	Commentary
<i>Mineral tenement and land tenure status</i>	<ul style="list-style-type: none"> • <i>Type, reference name/number, location and ownership including agreements or material issues with third parties such as joint ventures, partnerships, overriding royalties, native title interests, historical sites, wilderness or national park and environmental settings.</i> • <i>The security of the tenure held at the time of reporting along with any known impediments to obtaining a licence to operate in the area.</i> 	<ul style="list-style-type: none"> • The Cenicerros Rojos project is located approximately 20 km north of the town of Camana in southern Peru. • The Cenicerros Rojos project comprises 14 granted mineral concessions. • The tenements are held by Questdor which is a 100% subsidiary of AusQuest Limited. • There are no major heritage issues to prevent access to the tenements during surface exploration activities. Permits to drill are required including environmental, water and land access involving community consultations.
<i>Exploration done by other parties</i>	<ul style="list-style-type: none"> • <i>Acknowledgment and appraisal of exploration by other parties.</i> 	<ul style="list-style-type: none"> • No public reporting of exploration data is required in Peru.
<i>Geology</i>	<ul style="list-style-type: none"> • <i>Deposit type, geological setting and style of mineralisation.</i> 	<ul style="list-style-type: none"> • The deposit style being explored for is porphyry copper and gold, which are large scale disseminated copper (and gold) deposits found within orogenic belts that surround the Pacific Rim. These deposits are vertically extensive and areally large requiring significant drilling to evaluate.

Criteria	JORC Code explanation	Commentary
<i>Drill hole Information</i>	<ul style="list-style-type: none"> • A summary of all information material to the understanding of the exploration results including a tabulation of the following information for all Material drill holes: <ul style="list-style-type: none"> ○ easting and northing of the drill hole collar ○ elevation or RL (Reduced Level – elevation above sea level in metres) of the drill hole collar ○ dip and azimuth of the hole ○ down hole length and interception depth ○ hole length. • If the exclusion of this information is justified on the basis that the information is not Material and this exclusion does not detract from the understanding of the report, the Competent Person should clearly explain why this is the case. 	<ul style="list-style-type: none"> • Not applicable – surface sampling only
<i>Data aggregation methods</i>	<ul style="list-style-type: none"> • In reporting Exploration Results, weighting averaging techniques, maximum and/or minimum grade truncations (eg cutting of high grades) and cut-off grades are usually Material and should be stated. • Where aggregate intercepts incorporate short lengths of high grade results and longer lengths of low grade results, the procedure used for such aggregation should be stated and some typical examples of such aggregations should be shown in detail. • The assumptions used for any reporting of metal equivalent values should be clearly stated. 	<ul style="list-style-type: none"> • Not applicable – surface sampling only.
<i>Relationship between mineralisation widths and intercept lengths</i>	<ul style="list-style-type: none"> • These relationships are particularly important in the reporting of Exploration Results. • If the geometry of the mineralisation with respect to the drill hole angle is known, its nature should be reported. • If it is not known and only the down hole lengths are reported, there should be a clear statement to this effect (eg ‘down hole length, true width not known’). 	<ul style="list-style-type: none"> • Not applicable – surface sampling only
<i>Diagrams</i>	<ul style="list-style-type: none"> • Appropriate maps and sections (with scales) and tabulations of intercepts should be included for any significant discovery being reported These should include, but not be limited to a plan view of drill hole collar locations and appropriate sectional views. 	<ul style="list-style-type: none"> • Sample locations included on plan in ASX release.
<i>Balanced reporting</i>	<ul style="list-style-type: none"> • Where comprehensive reporting of all Exploration Results is not practicable, representative reporting of both low and high grades and/or widths should be practiced to avoid misleading reporting of Exploration Results. 	<ul style="list-style-type: none"> • Assay ranges and highlights provided in ASX release.
<i>Other substantive exploration data</i>	<ul style="list-style-type: none"> • Other exploration data, if meaningful and material, should be reported including (but not limited to): geological observations; geophysical survey results; geochemical survey results; bulk samples – size and method of treatment; metallurgical test results; bulk density, groundwater, geotechnical and rock characteristics; potential deleterious or contaminating substances. 	<ul style="list-style-type: none"> • The area was selected for sampling based on geological and geophysical data interpretations by the company.

Criteria	JORC Code explanation	Commentary
<i>Further work</i>	<ul style="list-style-type: none"><i>The nature and scale of planned further work (eg tests for lateral extensions or depth extensions or large-scale step-out drilling).</i><i>Diagrams clearly highlighting the areas of possible extensions, including the main geological interpretations and future drilling areas, provided this information is not commercially sensitive.</i>	<ul style="list-style-type: none">Proposals of further work will be determined after a thorough analysis of the data.