

September 1st, 2014
ASX Release

AUSQUEST EXPANDS FRASER RANGE FOOTPRINT WITH NEW TENEMENT 60KM SOUTH OF NOVA-BOLLINGER

AusQuest Limited (ASX: AQD) is pleased to advise it has further expanded its tenement holding in the **Fraser Range Nickel-Copper Province** of Western Australia through a new Exploration Licence Application covering a highly prospective ground package located approximately 60km south of Sirius Resources' Nova-Bollinger deposit (*Figure 1*).

The new application (Balladonia North), lies immediately north of the Company's Balladonia South tenement, and contains targets which AusQuest considers to be highly prospective for Nova-Bollinger-style discoveries. The new acquisition increases AusQuest's total ground-holding in the Fraser Range to **~1,850km²**.

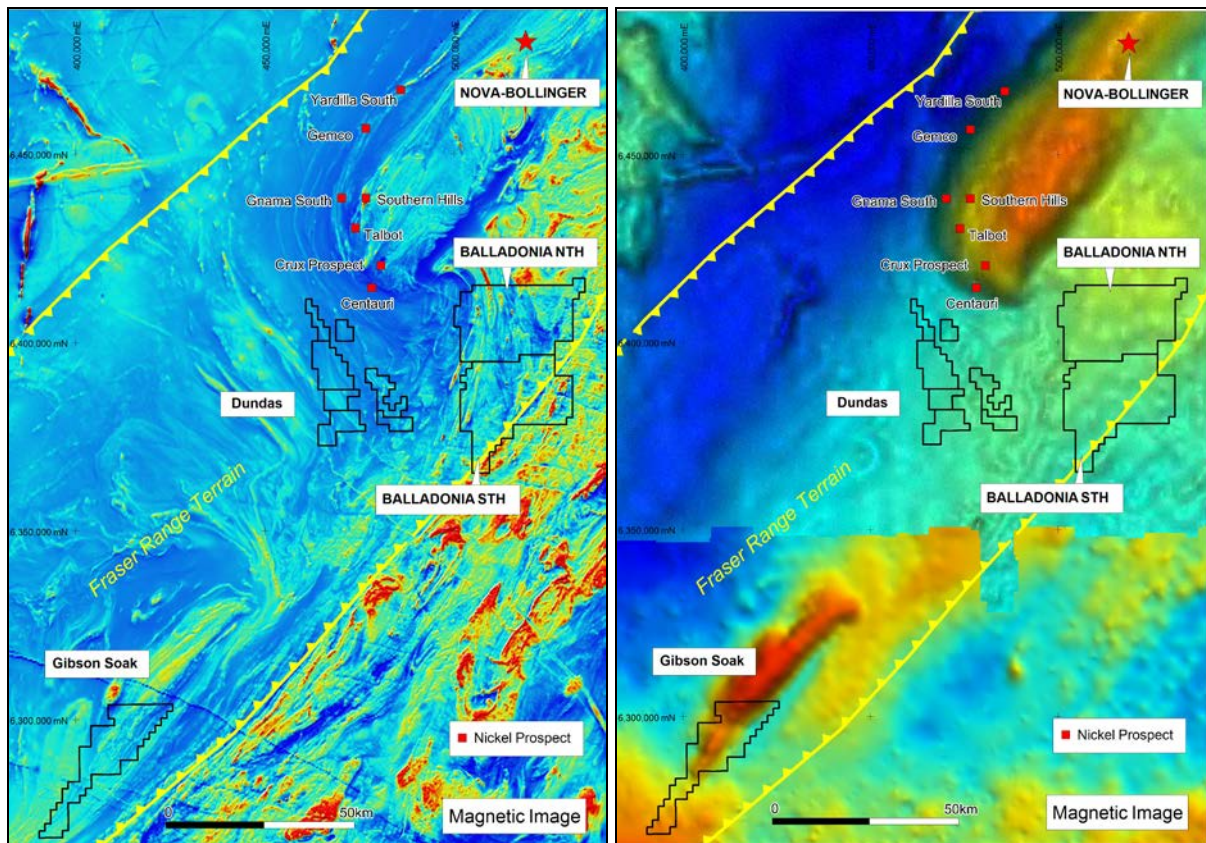


Figure 1: Fraser Range Tenement Locations

Balladonia North and South (100% AusQuest)

The Balladonia tenements straddle the south-eastern boundary of the Fraser Range Terrain, as defined by regional aeromagnetic data, and coincide with a large (deep) gravity response (30 milligals) located immediately south east of the linear gravity anomaly that defines the main Fraser Range terrain.

For personal use only

The titles occur within the Dundas Nature Reserve and will be subject to the same environmental management plan as the Company's Dundas Project, which is located approximately 20km to the west.

Aeromagnetic data over the tenements highlight a number of inferred mafic intrusions both parallel to and cross-cutting the general trend of the Fraser Range Belt (Figure 2). These intrusions are characterised by negative magnetic anomalies similar to those being tested by Sirius at their Crux and Centauri prospects, and Enterprise at the Plato prospect, both located <50km from the Balladonia titles.

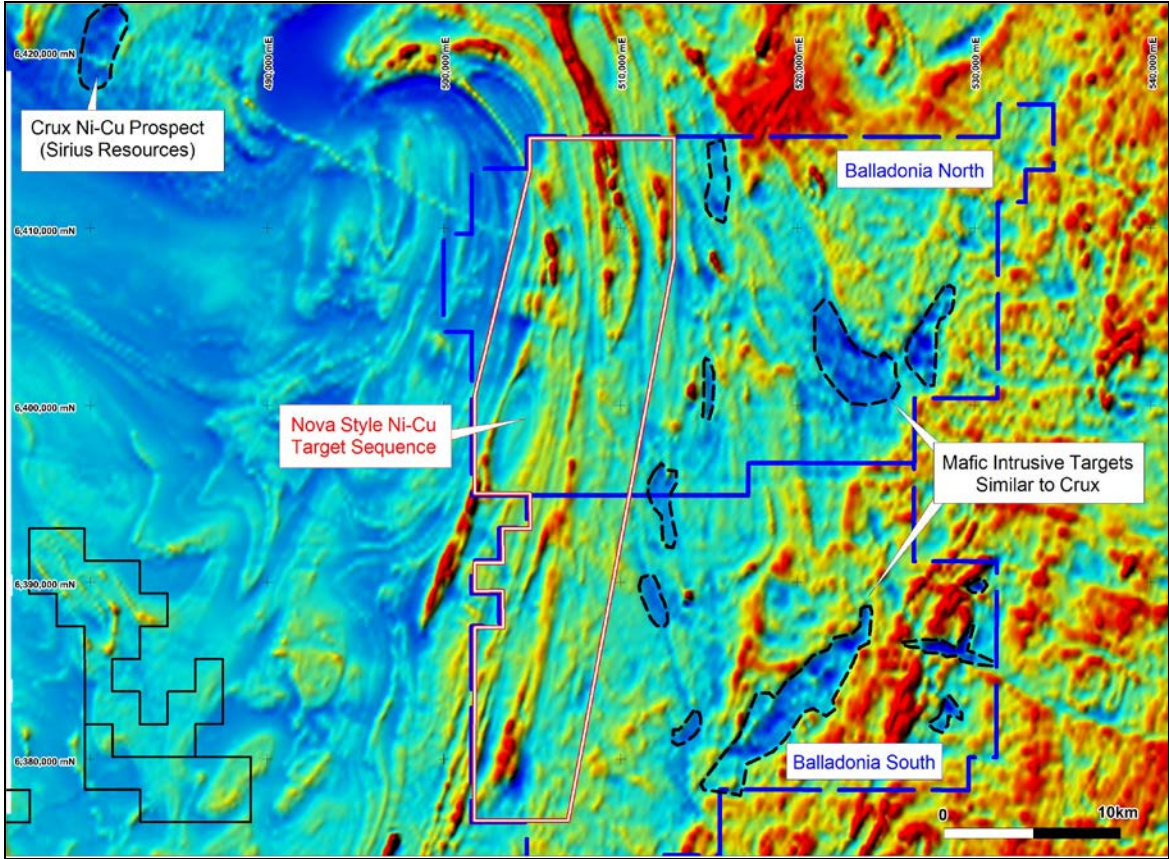


Figure 2: Balladonia EL applications showing proposed target areas.

The larger anomalies strike parallel to major north-east trending structures and represent priority nickel-copper sulphide exploration targets. Cross-cutting east-west dykes of similar magnetic character support the concept that these magnetic anomalies represent potential mafic sills and/or intrusions.

Over the western half of the titles, the magnetic expression is more indicative of sequences that host the Nova-Bollinger deposit. Several elongate 'eye type' structures are evident in the magnetics and will be targeted as a priority when title is granted and access approved. Recent age dating by the Geological Survey of WA indicates this western zone contains a similar age of intrusive rocks (~1,300Ma) to those within the main Fraser Range terrain which hosts the Nova deposit.

Native Title approval was recently obtained for the southern tenement which should allow the title to be granted within the coming months. The Native Title approval process for the northern tenement will take at least four months to be completed.

Surface sampling programs will be used to outline areas for subsequent ground and/or helicopter EM surveying to identify targets for drilling.

The Company continues to focus its exploration efforts in Australia within the Fraser Range Province of WA which is regarded as a high priority exploration target area for sulphide nickel and copper.



Graeme Drew
Managing Director

COMPETENT PERSON'S STATEMENT

The details contained in this report that pertain to exploration results are based upon information compiled by Mr Graeme Drew, a full-time employee of AusQuest Limited. Mr Drew is a Fellow of the Australasian Institute of Mining and Metallurgy (AUSIMM) and has sufficient experience in the activity which he is undertaking to qualify as a Competent Person as defined in the December 2012 edition of the "Australasian Code for Reporting of Exploration Results, Mineral Resources and Ore Reserves" (JORC Code). Mr Drew consents to the inclusion in the report of the matters based upon his information in the form and context in which it appears.

For personal use only