

For personal use only

Burey Gold Limited (ASX: BYR)

Investor Presentation – April 2015

DISCLAIMER



BUREY GOLD

The material in this presentation (“Material”) is not and does not constitute an offer, invitation or recommendation to subscribe for, or purchase securities in Burey Gold Limited (BYR) nor does it form the basis of any contract or commitment. BYR, its directors, employees, agents and consultants, shall have no liability including liability to any person by reason of negligence or negligent misstatement, for any statements, opinions, information or matters, express or implied, arising out of, contained in or derived from, or for any omissions from this material except liability under statute that cannot be excluded.

Statements contained in this material, particularly those regarding possible or assumed future performance, costs, dividends, production levels or rates, prices, resources, reserves or potential growth of BYR, industry growth or other trend projections are, or may be, forward looking statements. Such statements relate to future events and expectations and, as such, involve known and unknown risks and uncertainties. Actual results and developments may differ materially from those expressed or implied by these forward looking statements depending on a variety of factors.

Competent Person’s Statement

The information in this report that relates to exploration results is based on, and fairly represents information and supporting documentation prepared by Mr Klaus Eckhof, a Competent Person who is a member of The Australasian Institute of Mining and Metallurgy. Mr Eckhof is a director of Burey Gold Limited. Mr Eckhof has sufficient experience that is relevant to the style of mineralisation and type of deposit under consideration and to the activity being undertaken to qualify as a Competent Person as defined in the 2012 Edition of the “Australasian Code for Reporting of Exploration Results, Mineral Resource and Ore Reserves”. Mr Eckhof consents to the inclusion in this report of the matters based on his information in the form and context in which it appears.

The information in this report that relates to the Giro Gold Project has been previously reported by the Company in compliance with JORC 2012 in the market release dated 9 April 2015. The Company confirms that it is not aware of any new information or data that materially affects the information included in the April 2015 market announcement.

The information in this report that relates to the Balatindi Project was first reported by the Company in compliance with JORC 2012 in a market release dated 30 April 2014.

COMPANY SHAPSHOT



BUREY GOLD

12month Share Price Graph



Trading Information

ASX Ticker

Provisional Shares on Issue
(JasperEx Placement 20/04/15)

Options
(47.5m @ 5c)

Market Capitalisation

Cash (20/04/15)

No of Shareholders

Top 20 Holding

BYR

625.4m

47.5m
Expire
31/12/16

~\$16m*

\$1.6m

1,154

74.56%

***at 10/04/15**

Significant Shareholders

Cong Mao Huai – **16.44%**

Perseus Mining – **14.16%**

JP Morgan Nominees – **12.57%**

BOARD OF DIRECTORS



BUREY GOLD

Klaus Eckhof - Executive Chairman

Geologist

20+ years of experience developing mineral deposits, including time in Africa. Founded Moto Goldmines, Spinifex Gold Ltd and Lafayette Mining Ltd.

Mark Calderwood - Non-executive Director

20+ years of experience in exploration and development in Africa. Previously Managing Director and CEO of Perseus Mining, Mr Calderwood worked for Mount Edon Gold Mines before moving to Moto Gold Mines where he was involved in the discovery of Kibali Gold Mine. He also serves on Boards of Explaurum & Manas Resources.

Kevin Thomson - Non-executive Director

Geologist

25+ years' experience. 11 years in West Africa, including Guinea. Exploration manager for Burey's significant shareholder, Perseus Mining Limited, and instrumental in its successful Ghana and Ivory Coast gold projects

Susmit Shah – Non-executive Director, Company Secretary

Chartered accountant

25+ years experience. Has been involved with a range of Australian publicly listed companies in company secretarial and financial roles.

BUREY PROJECTS IN AFRICA



BUREY GOLD

GIRO PROJECT, Democratic Republic of Congo

- Exploration program underway
- **610km²** in two licences – gold
- Burey acquired **55%**; option on additional 10%
- DRC Parastatal (Sokimo) **35%**

BALATINDI PROJECT, Guinea

- **249km²** in three licenses – gold, uranium, copper
- Burey completing its **90%** ownership process; option on remaining 10%



DEMOCRATIC REPUBLIC OF CONGO



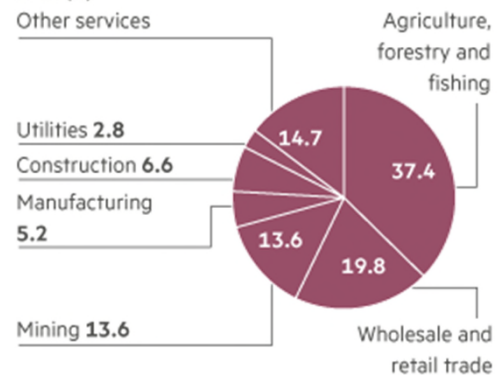
BUREY GOLD



- Considered the ‘Elephant of Africa’
- Majors are investing in DRC mining sector: Gold (Randgold Resources, AngloGold Ashanti, Banro), Copper/cobalt (Freeport McMoran, Katanga Mining, MMG Limited, Metorex)
- China investing in infrastructure for rail, roads and power to develop sustainable production

GDP by industry

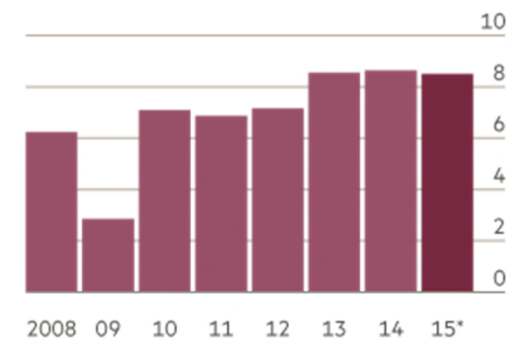
2012 (%)



Source: Thomson Reuters Datastream

Real GDP growth

Annual % change



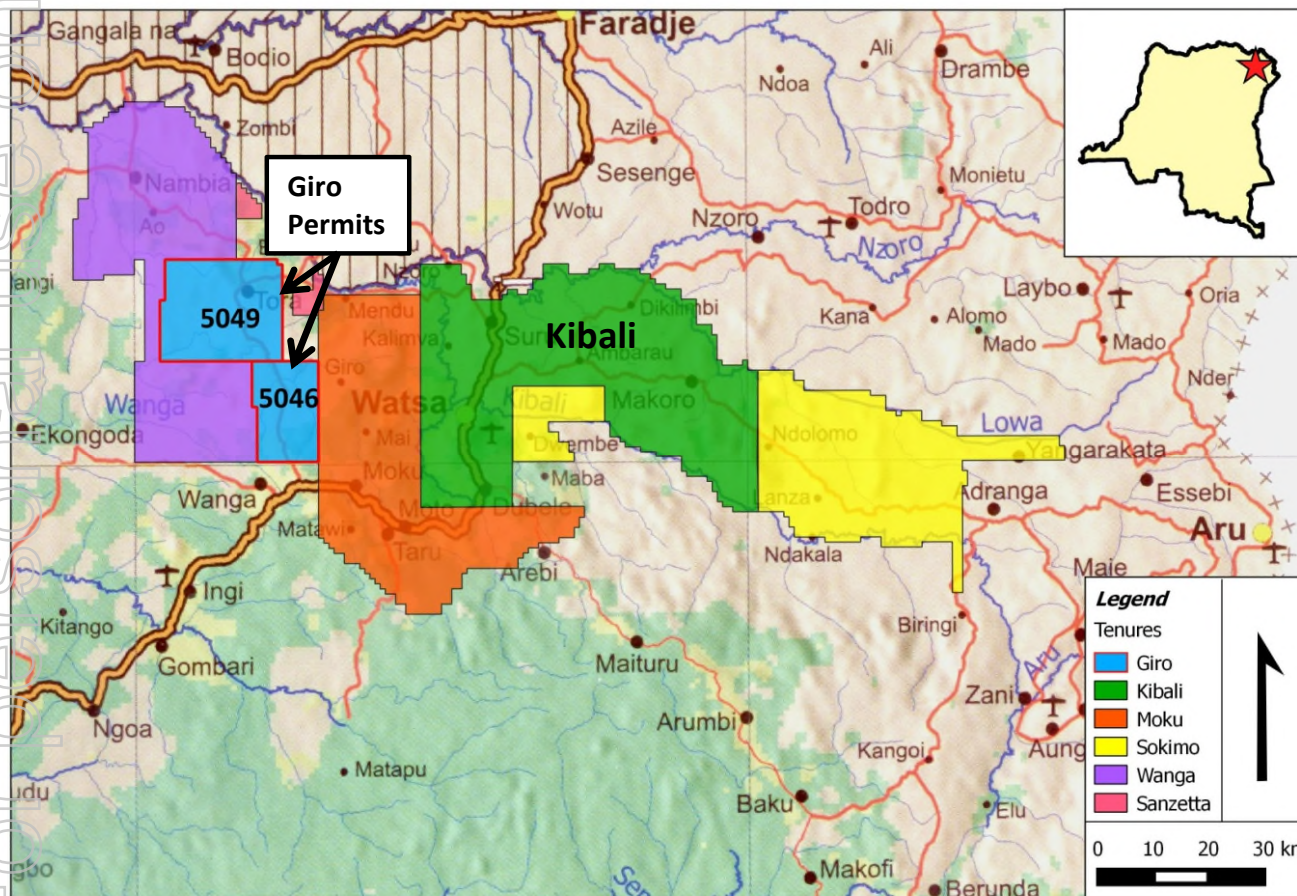
* Forecast
Source: IMF



GIRO PROJECT – NORTHEAST DRC



BUREY GOLD

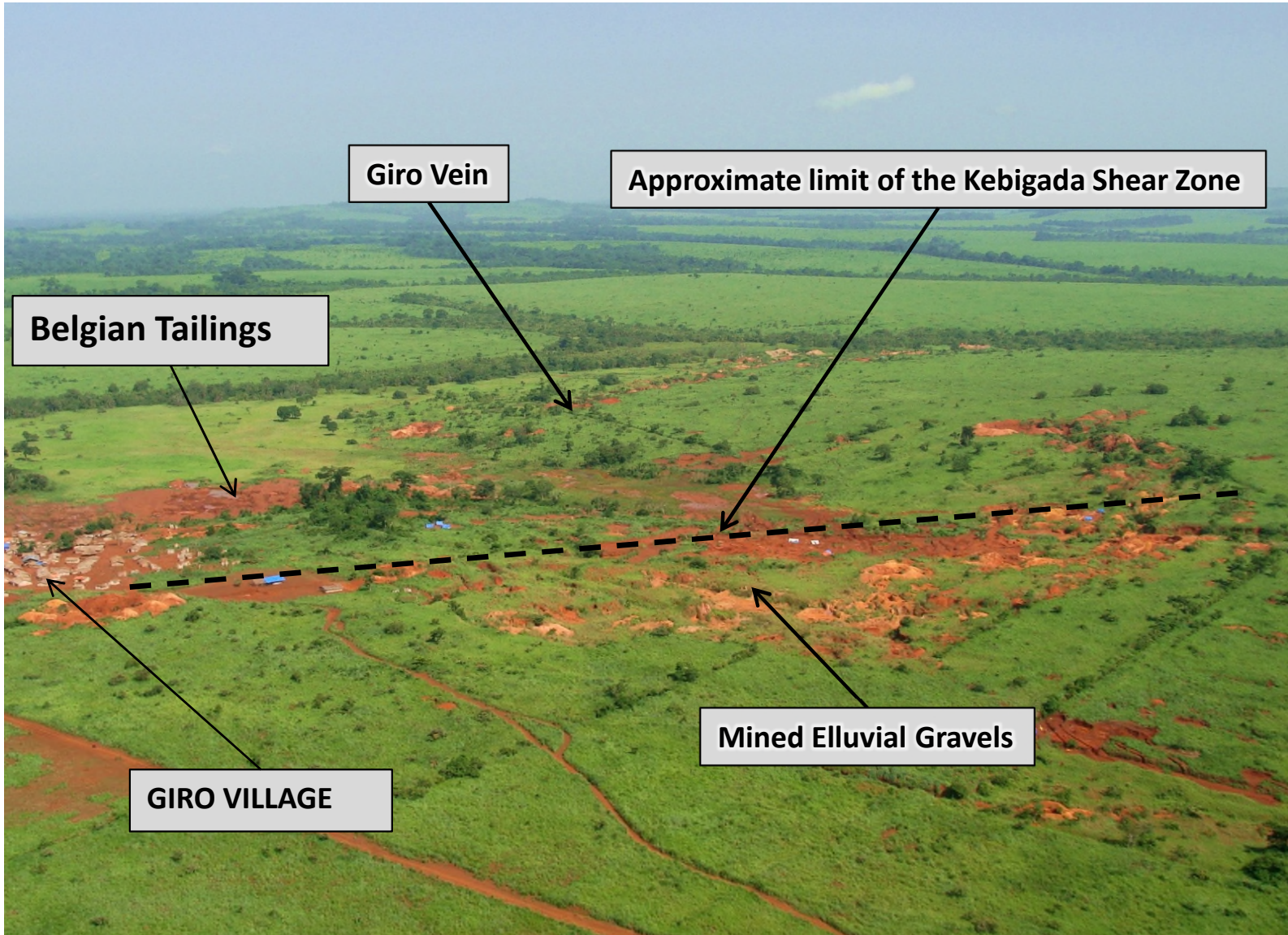


- Two permits covering 610 km² (PEs 5046 & 5049) in the Moto Greenstone Belt
- 20-30km west of Randgold's 17 Moz Kibali deposits
- Same volcano-sedimentary host rocks as Kibali
- Good access (savannah vegetation)
- Good maintained road to Kampala (Uganda) – highly developed
- Drilling programme commenced in October 2014

GIRO PROSPECT – TERRAIN



BUREY GOLD

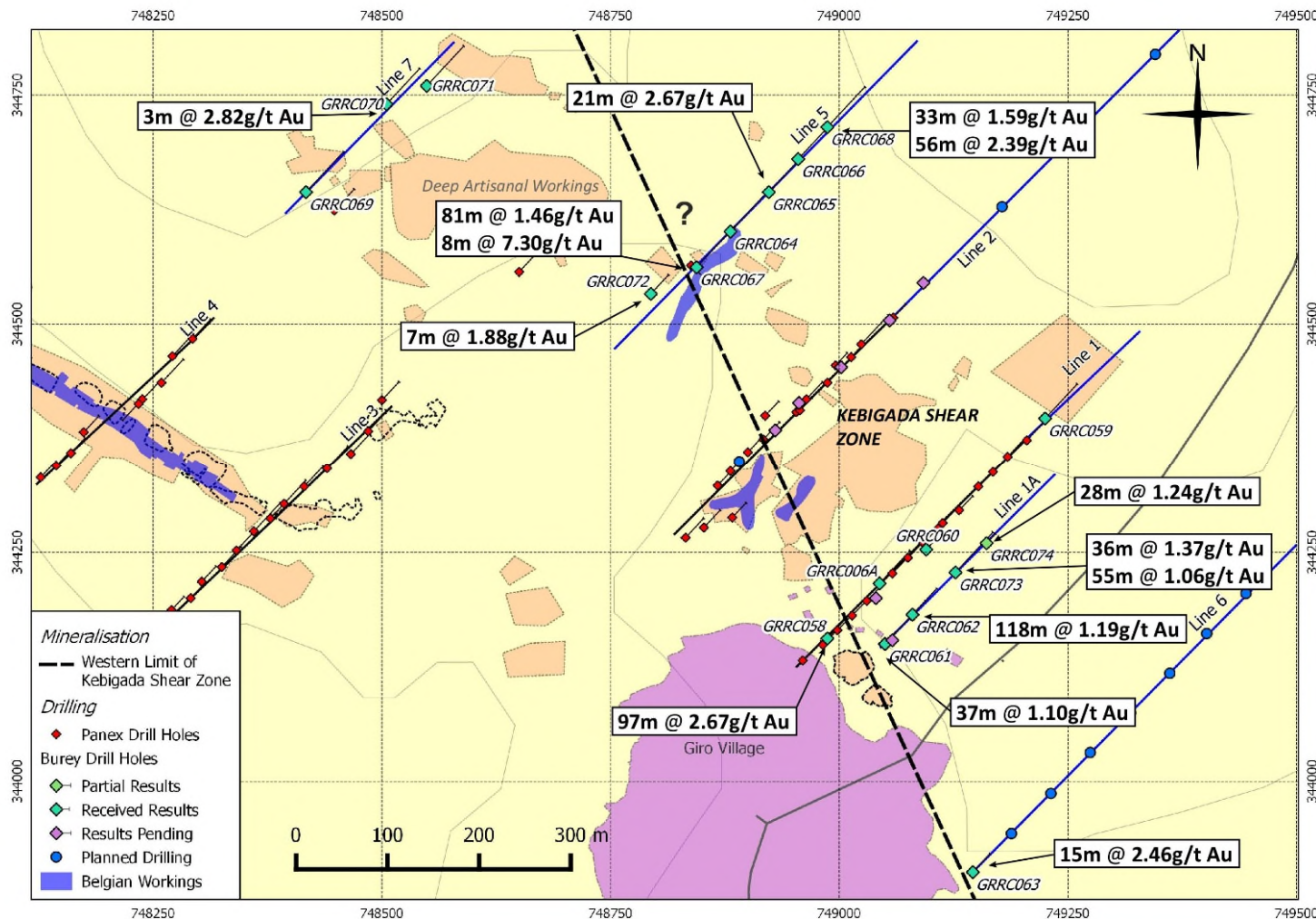


For personal use only

GIRO PROJECT – DRILLING CAMPAIGN



BUREY GOLD



Locality Map showing reported drill hole positions (green) and artisanal workings.

For personal use only

GIRO PROJECT – DRILLING CAMPAIGN



BUREY GOLD

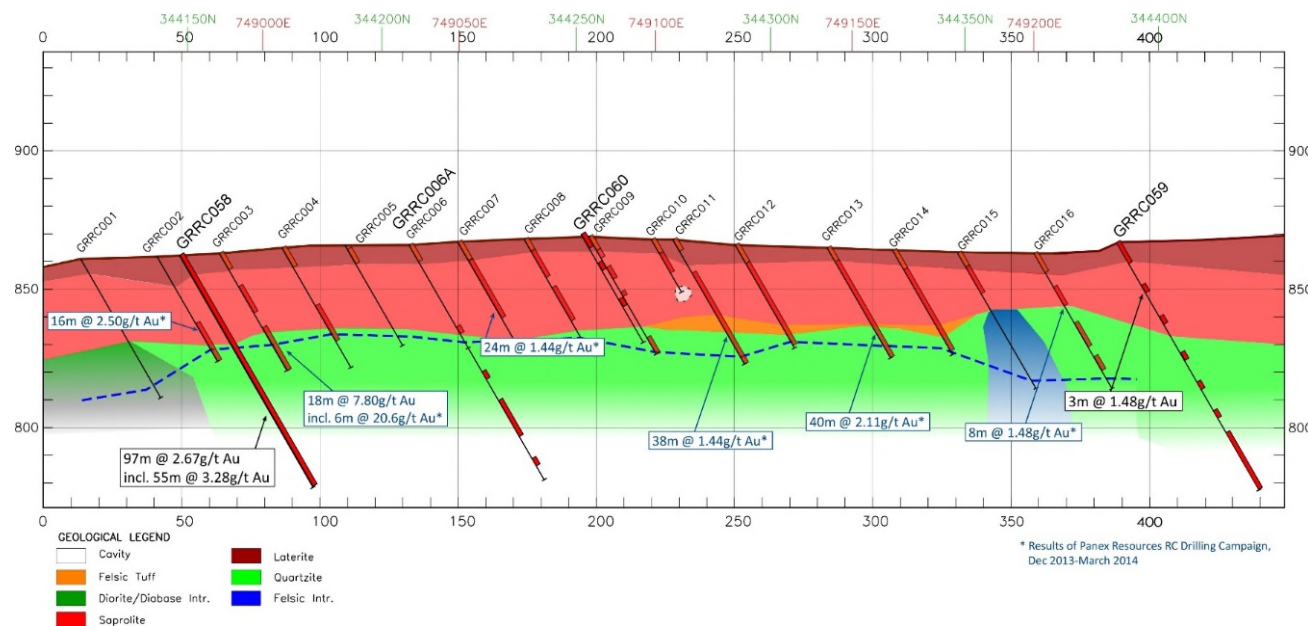
January 2015 Drilling

Results received for 8 holes from the **Kebigada Shear Zone**

All holes targeted mineralisation at depth and include:

- GRR058: **97m at 2.67g/t Au** from surface to bottom of hole, including **55m at 3.28g/t Au** from 21m
- GRR062: **24m at 1.99g/t Au** from surface
- GRR063: **15m at 2.46g/t Au** from 40m
- GRR064: **6m at 22.68g/t Au** from 7m, including **3m at 44.2g/t Au** from 7m

Drilling confirmed mineralisation **remains open to the NW, NE and SE and at depth**



Section Cross line 1

GIRO PROJECT – DRILLING CAMPAIGN



BUREY GOLD

February 2015 Drilling

Results received for 4 additional holes from the Kebigada Shear Zone

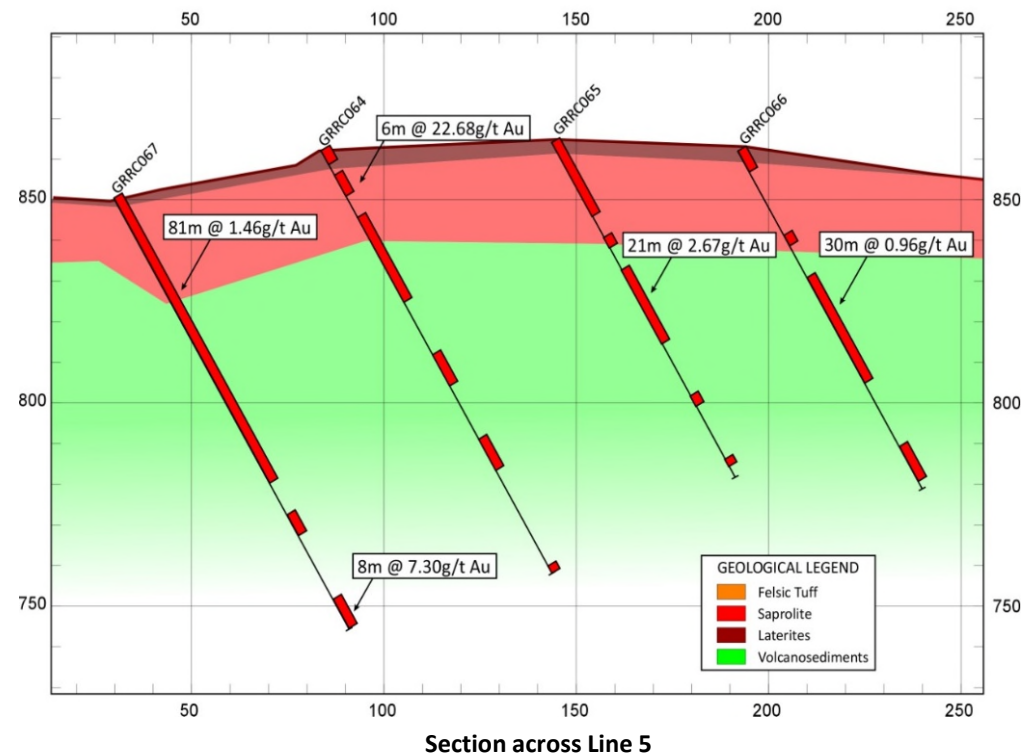
All holes drilled on the same section line to extend the area of known mineralisation

Significant results included:

- GRR067: **81m at 1.46g/t Au** from surface and **8m at 7.30g/t Au** from **114m**
- GRR065: **21m at 2.67g/t Au** from **36m**

Drilling has confirmed mineralisation over at least 700m and remains open in all directions and at depth

Drilling associated with a **2,000 x 1,000** metre gold in soil anomaly greater than **200ppb Au**



GIRO PROJECT – DRILLING CAMPAIGN



March/April 2015 Drilling

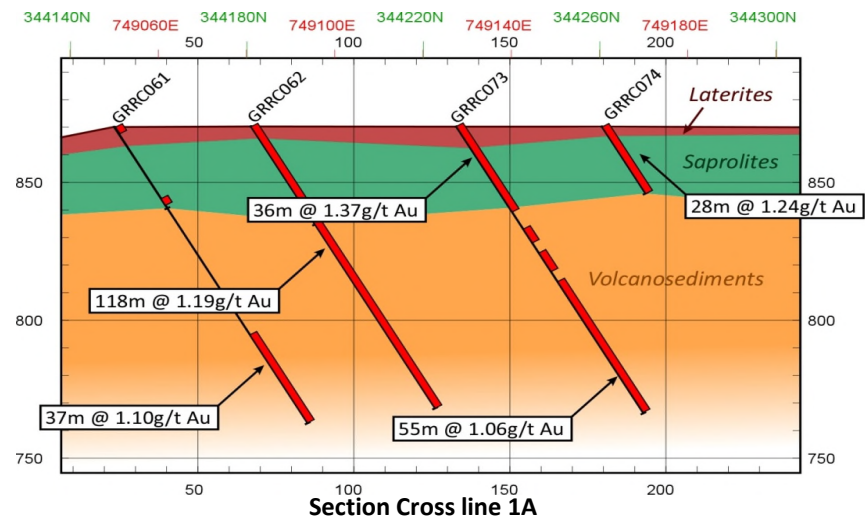
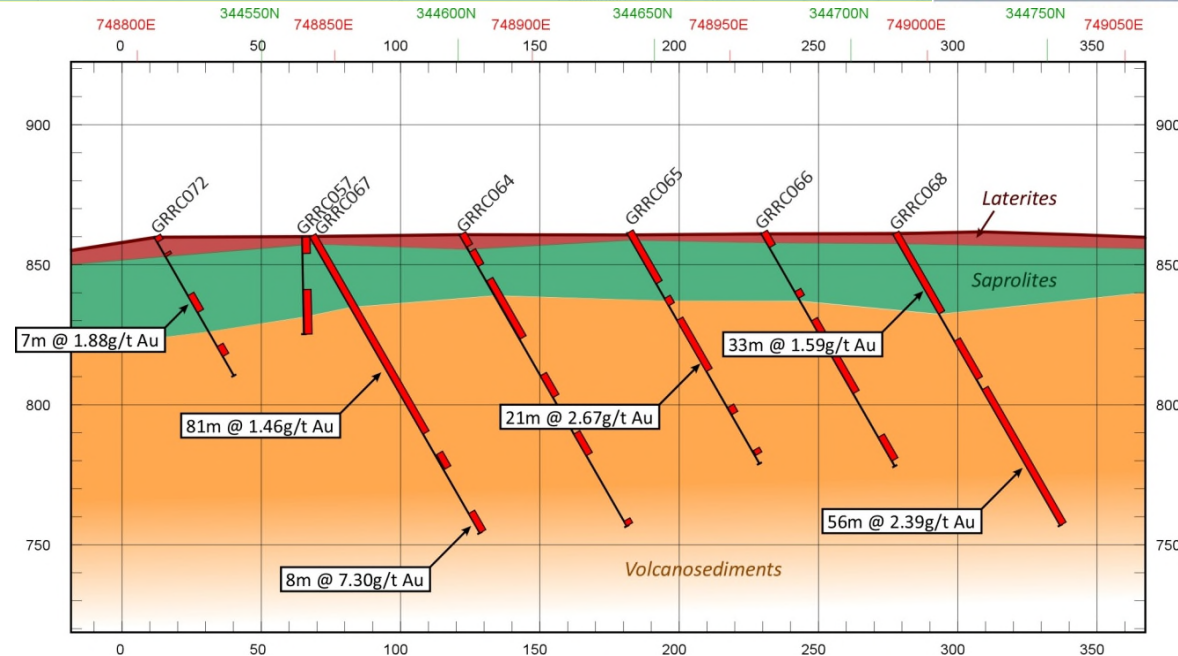
Results received for 9 additional holes from Giro

- 6 from Kébigada Shear Zone
- 3 to the west of Kébigada under artisanal workings

Significant results included:

- **GRRC068: 33m at 1.59g/t Au from surface and 56m at 2.39g/t Au from 64m**
- **GRRC062: 118m at 1.19g/t Au from surface**

Drilling has confirmed mineralisation over 700m by 300m and remains open in all directions and at depth

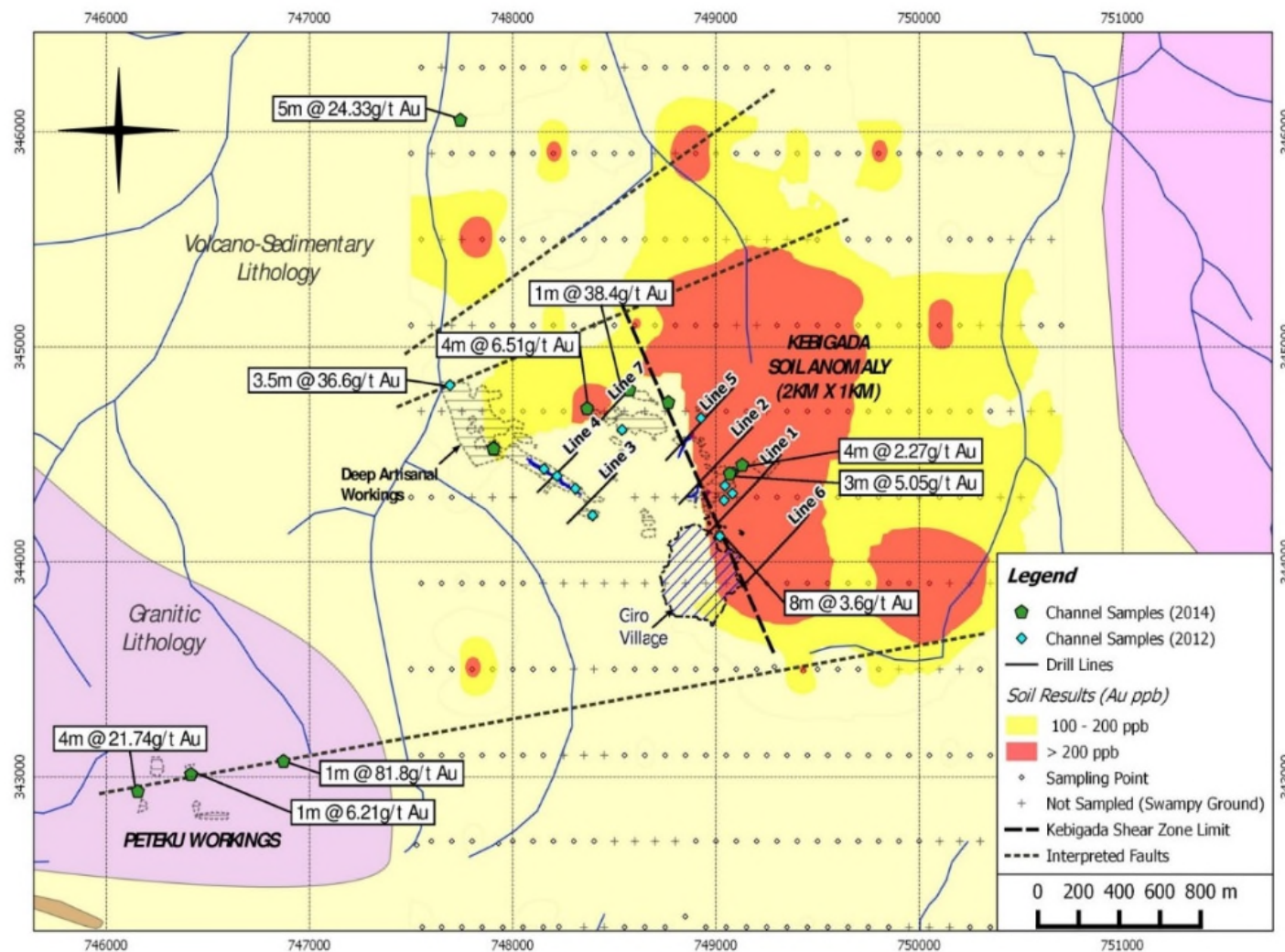


GIRO PROJECT – SOILS AND CHANNEL SAMPLING



BUREY GOLD

- 1000 x 2000m gold in soil anomaly (>200ppb)
- Significant results from recent channel sampling of artisanal workings included
 - 5m at 24.33g/t Au
 - 1m at 38.4g/t Au
 - 4m at 6.51g/t Au
 - 4m at 21.74g/t Au
 - 1m at 81.8g/t Au

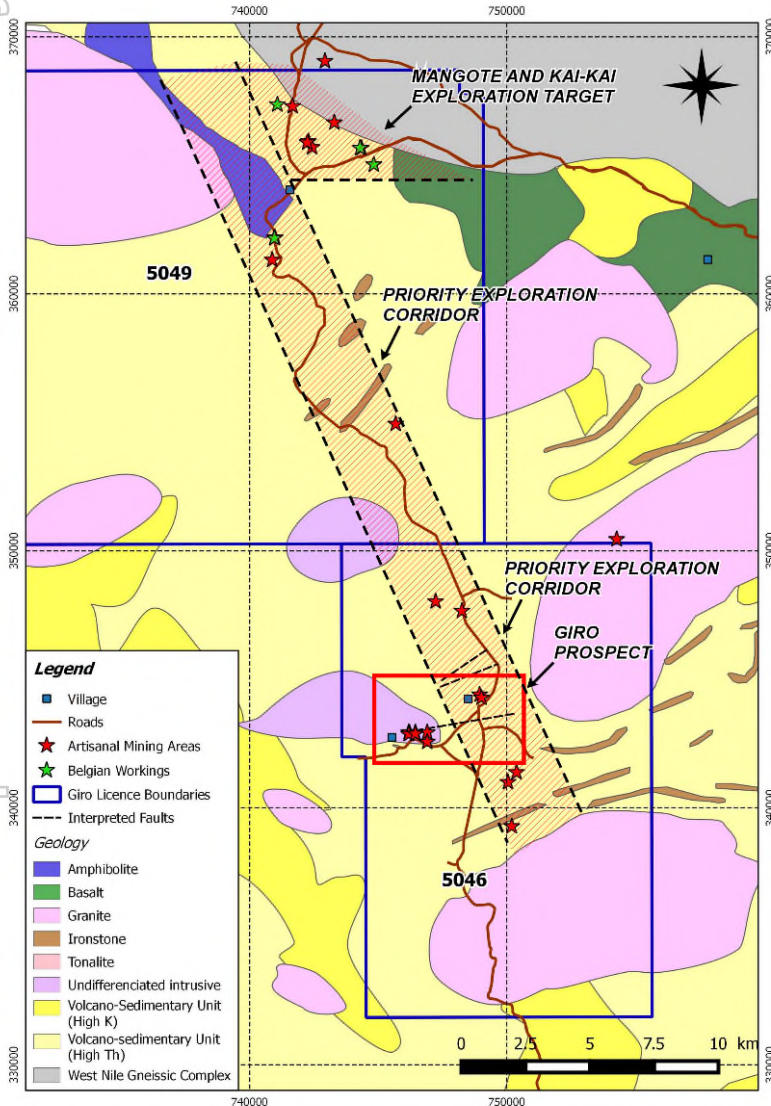


For personal use only

GIRO PROJECT POTENTIAL



BUREY GOLD

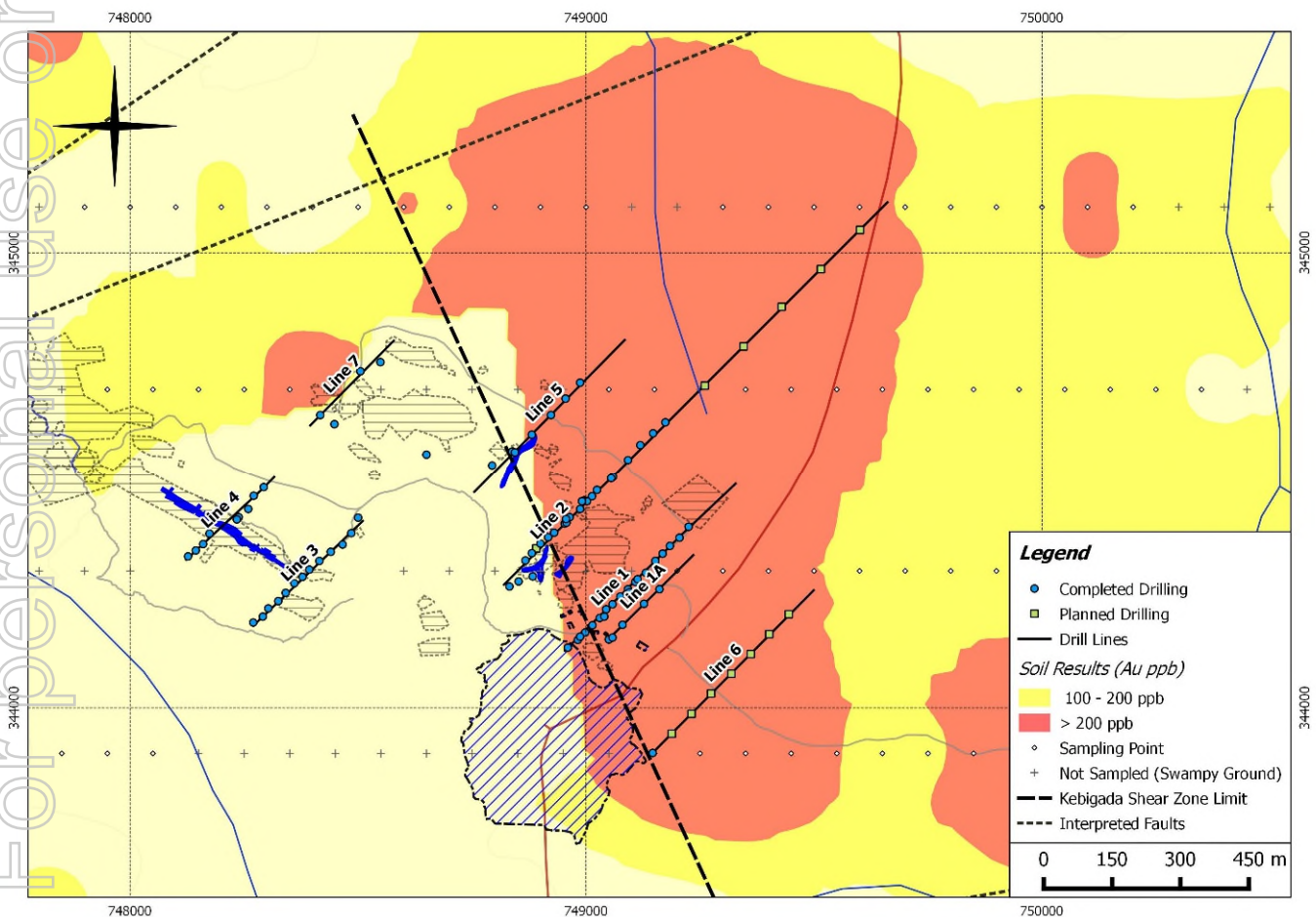


- Giro Prospect:
 - Drilling associated with 2,000 x 1,000m Au in soil anomaly (western 300m drill tested over 700m strike length)
- Peteku Prospect:
 - High grade structure in granites mined historically (channel samples up to 1m at 82g/t Au)
- Mangote and Kai-Kai Prospects:
 - Two areas mined during Belgian colonial era (0.6m at 37g/t Au and 0.35m at 485g/t Au from drilling)
- 30km interpreted structural corridor (includes Giro and artisanal workings)

CURRENT WORK PROGRAMME



BUREY GOLD



- A 4,000m RC drilling programme commenced in October 2014
- 25 holes for 2500m completed across the Kebigada Shear Zone
- Significant results delivered to date
- Initial soil sampling (151 samples) completed to the NW and SE of the Kebigada Shear Zone
- Soil sampling programme ongoing over the 30km NW trending structural corridor

SUMMARY



BUREY GOLD

- **Mineralisation open at depth and all directions**
- Giro Project has the same geological setting as Randgold's **17-million ounce** Kibali Gold deposits
- Giro has excellent potential for the discovery of **multi-million ounce gold deposits**
- Balatindi has potential to host significant, **open pittable gold & uranium**
- Management team has discovered more than **20 million ounces of gold and 1 million tonnes of copper**

For personal use only

For personal use only



BUREY GOLD

Appendix

TERMS OF ACQUISITION



BUREY GOLD



- Burey acquired 85% interest in Amani Consulting sprl (55.25% interest in the Giro Project) by issuing 62.4m shares to Amani vendors and 55.7m shares to Panex
- 47.5m options to Amani, exercisable at \$0.05 by 31 December 2016
- US\$300,000 to Amani
- Burey to sole fund to development stage
- US\$5,350,000 to Amani vendors upon discovery of 3Moz @ 2.5g/t Au of measured and indicated gold resources.
- US\$2.5m to DRC Government and US\$700,000 to Sokimo on DFS completion and decision to mine
- Burey has a first right on Amani's remaining 15%

GIRO SITE PICTURES



BUREY GOLD



Ongoing drilling



Repaired access road



Giro camp



RC samples preparation

For personal use only

GUINEA, WEST AFRICA



BUREY GOLD

For personal use only

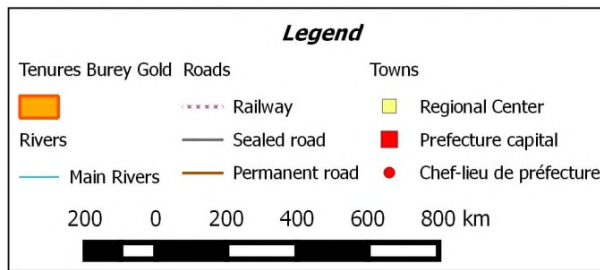


- Mining is Guinea's major source of foreign exchange
- Holds 25% of world's high grade reserves of bauxite
- New Mining Code adopted in September 2011
- Presently 15% Government free-carry but adds the option to purchase an additional 20% contributing interest at an agreed price with the investor

Balatindi Project – East Guinea



For personal use only

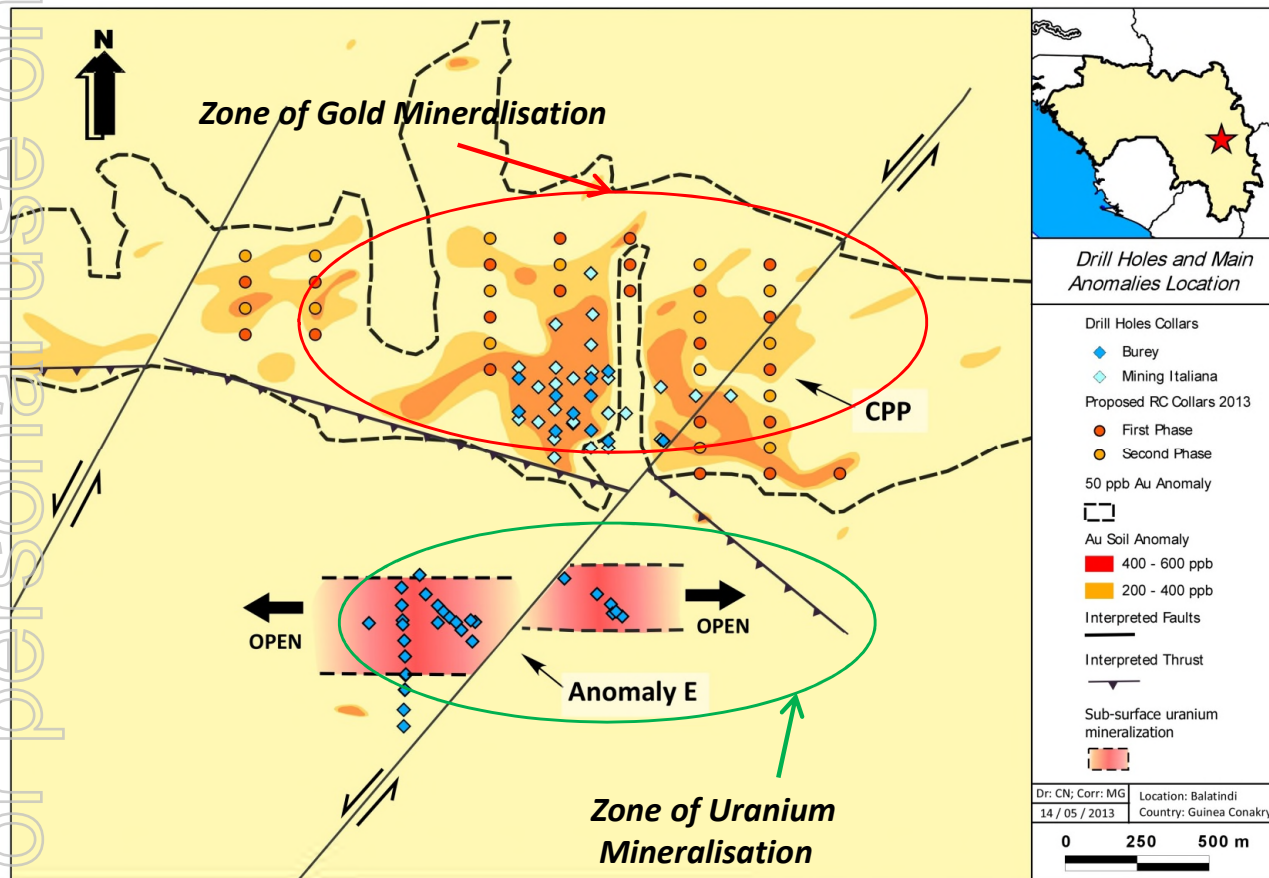


- Three adjoining properties covering 249 km² in the Bale Mylonitic Zone (tectono-magmatic belt between Archean basement & Siguiri basin in the north)
- Good potential for **gold, uranium and copper** mineralization
- Good potential for large bulk tonnage deposit
- Good access throughout the year
- Plans to commence an RC drilling programme to determine true strike extent of mineralized zone

BALATINDI - MINERALISATION



BUREY GOLD

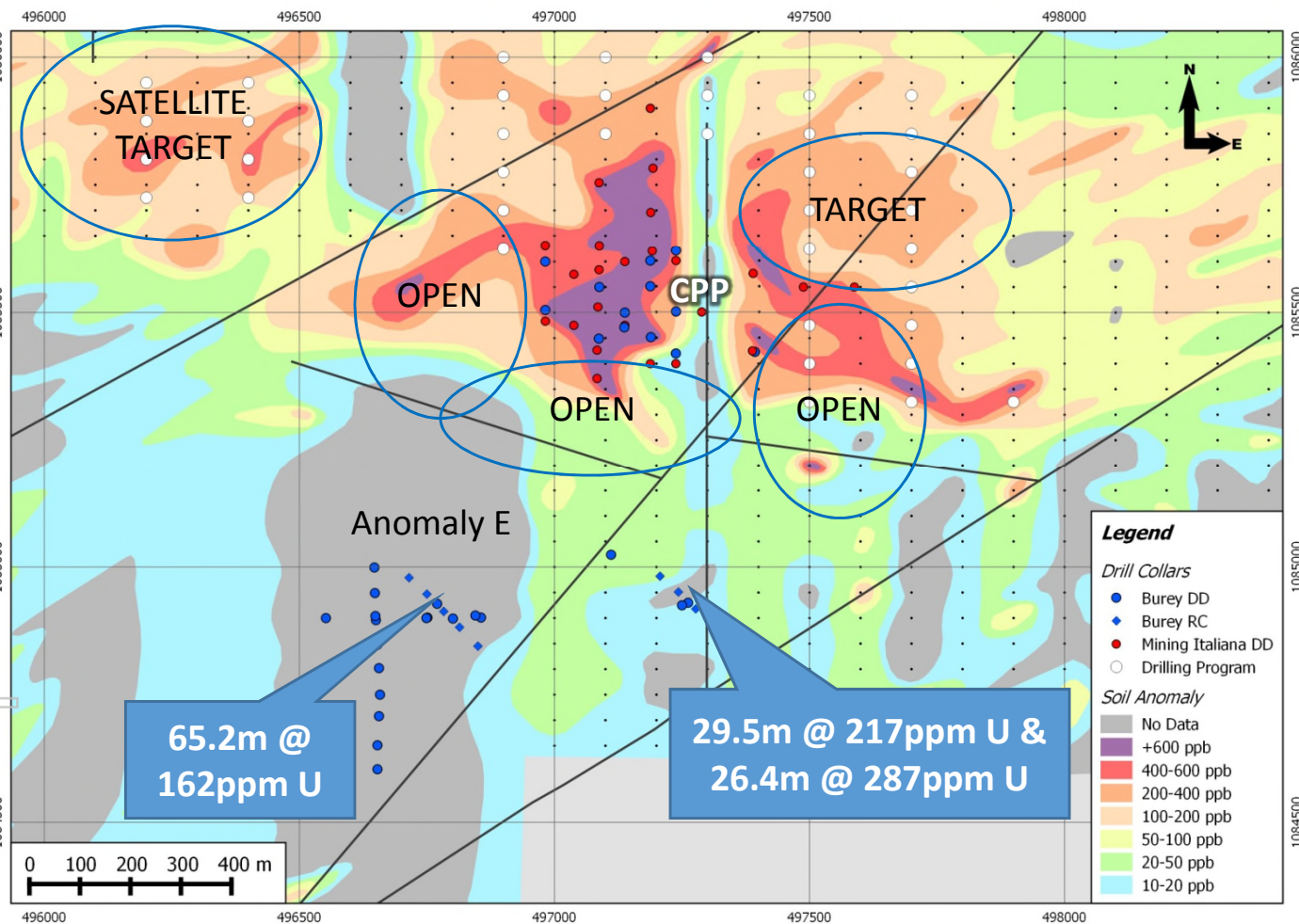


- System divided in **two zones: Gold** mineralisation to the North (**CPP**), **Uranium** to the South (**Anomaly E**)
- Geological model between IOCG and porphyry type deposit (lacking iron)
- Historic drilling (Mining Italiana) confirmed gold mineralisation from surface to depths exceeding 100m
- Gold in soil anomaly defined over 4.5km (>50ppb) - CPP
- Uranium mineralisation over 400m – Anomaly E
- Strong copper association

FUTURE WORK - BALATINDI



BUREY GOLD



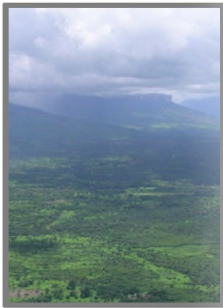
- Complete process to acquire a 90% ownership interest in the Project
- Conduct 3,000m RC drilling programme to follow up on targets at CPP (dips 40-50 degrees to the south)
- Define potential open pitable resource

Burey Gold Limited



BUREY GOLD

Thank You



BUREY GOLD



For personal use only

CONTACTS



BUREY GOLD

www.bureygold.com

Ph: +61 8 9381 2299

Klaus Eckhof, Chairman:

eckhofk@crcpl.com.au

Peter Taylor, Investor Relations:

peter@nwrcommunications.com.au

Ph: +61 412 036 231

For personal use only