

For personal use only

Pepinini
Minerals Limited

Rebecca Holland Kennedy
Managing Director



Latest Developments

Presentation to  Sydney Resources Round-up 12 May 2016

Innovation to greater diversity

Three new projects in train through innovative thinking and good geology

1

**Mozart Project – Amadeus Basin,
WA - Diamonds, Gold and Base
Metals – tenure application**



2

**Oasis Gold Project – Queensland
- existing tenure**



3

**Salta Lithium Brines – Argentina
- *project generation***



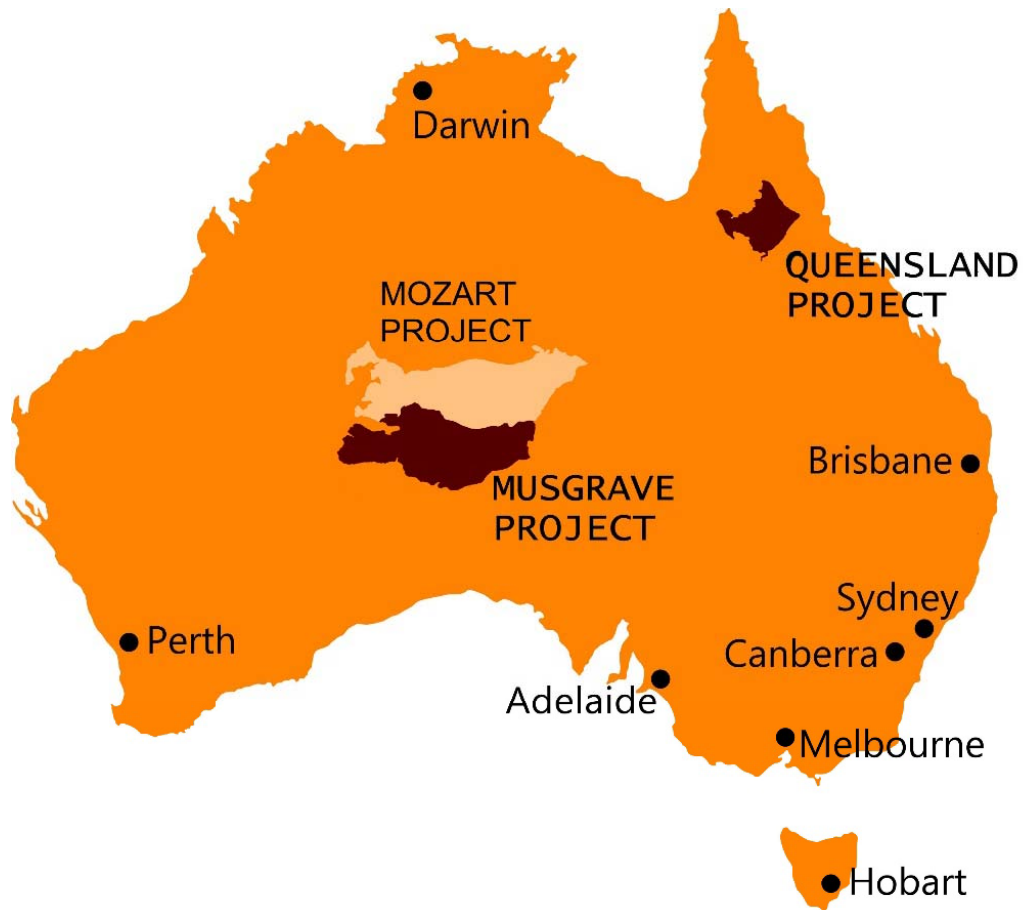
For personal use only

Pepini



We Explore

PepinNini – Greenfield Exploration Projects

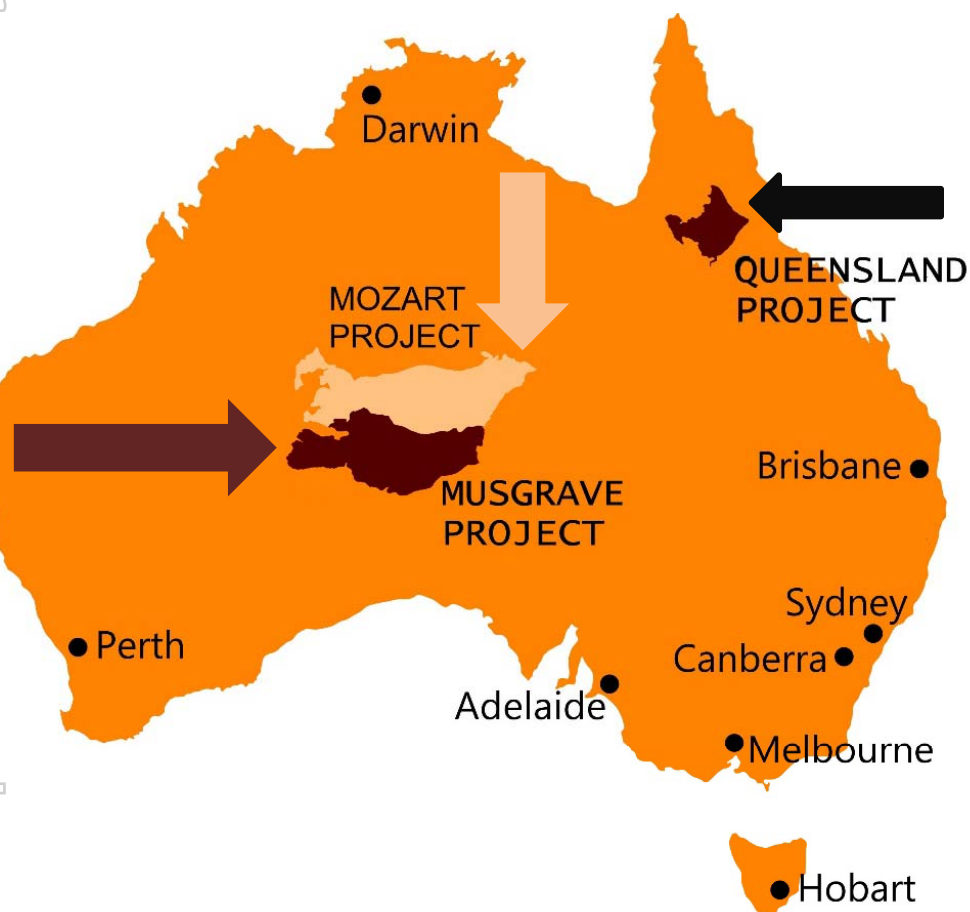


For personal use only

PepinNini

Australian Exploration Projects

For personal use only



❑ **Musgrave** – Nickel, Copper Cobalt, Platinum and Palladium (established project)

❑ **Mozart** - diamonds, base metals and gold (new project)



❑ **Queensland** – Oasis gold (new project) and uranium (established project)



We Explore

Argentina Exploration Projects



- ❑ **Santa Ines** - Copper, Gold & silver(established project)
- ❑ **Salta Lithium Project** – Lithium brine(being established)



For personal use only

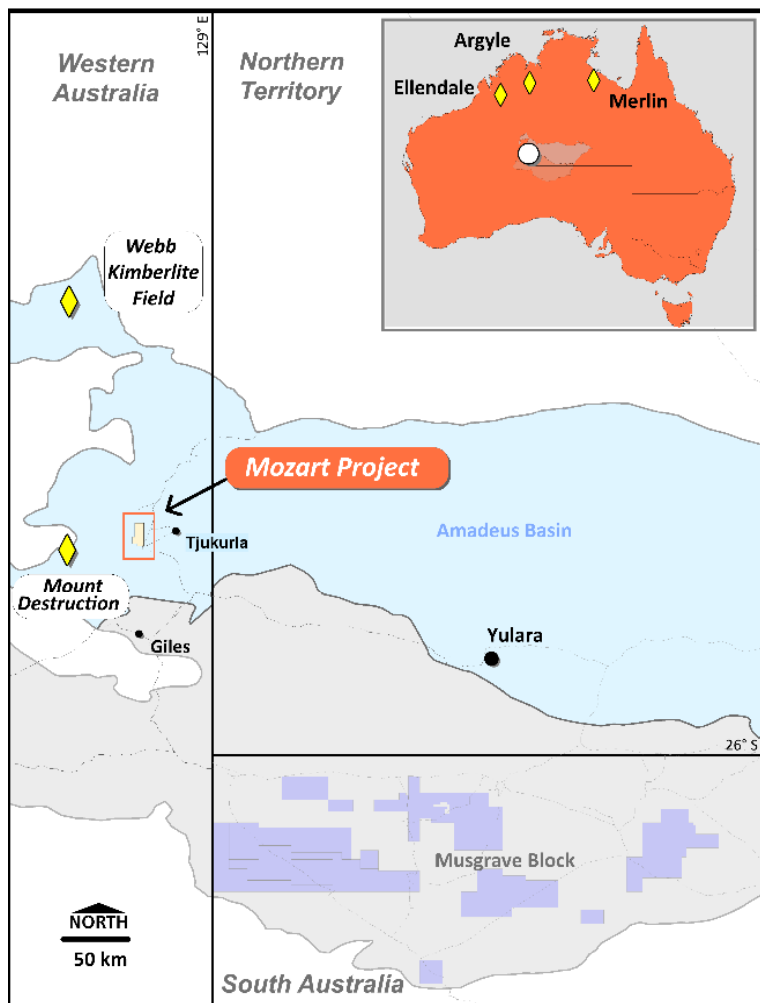
pepinini



We Explore

Western Amadeus Basin – Mozart Diamond Project

For personal use only



- ❑ Diamonds, base metals and gold potential
- ❑ Unexplored region well located
- ❑ Operational synergy with PNN's Musgrave Project



Pepini

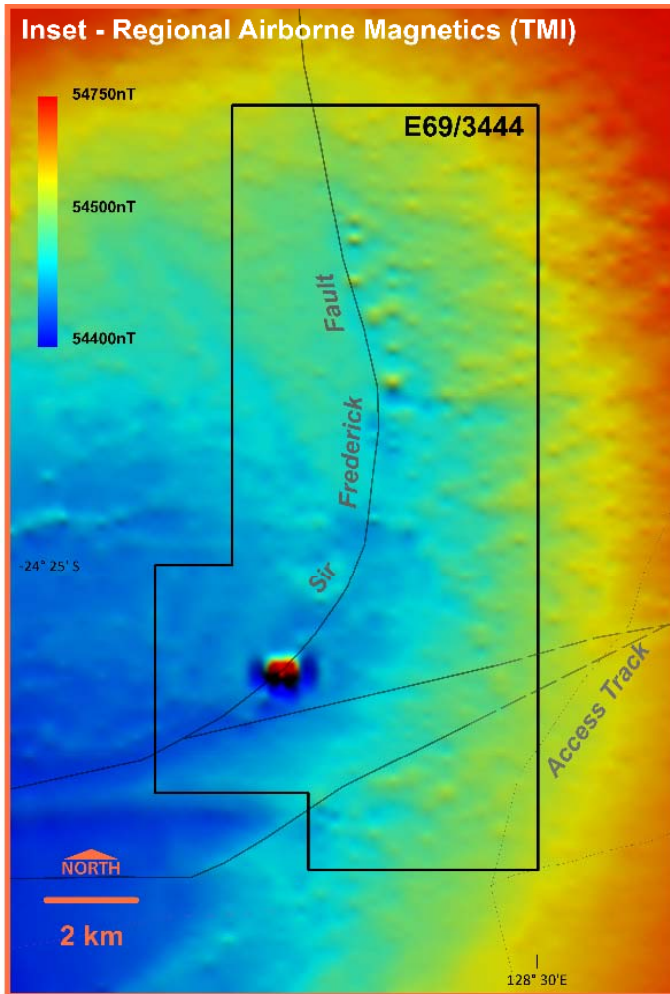


We Explore

Pepini
Minerals Limited

Western Amadeus Basin – Mozart Diamond Project

For personal use only



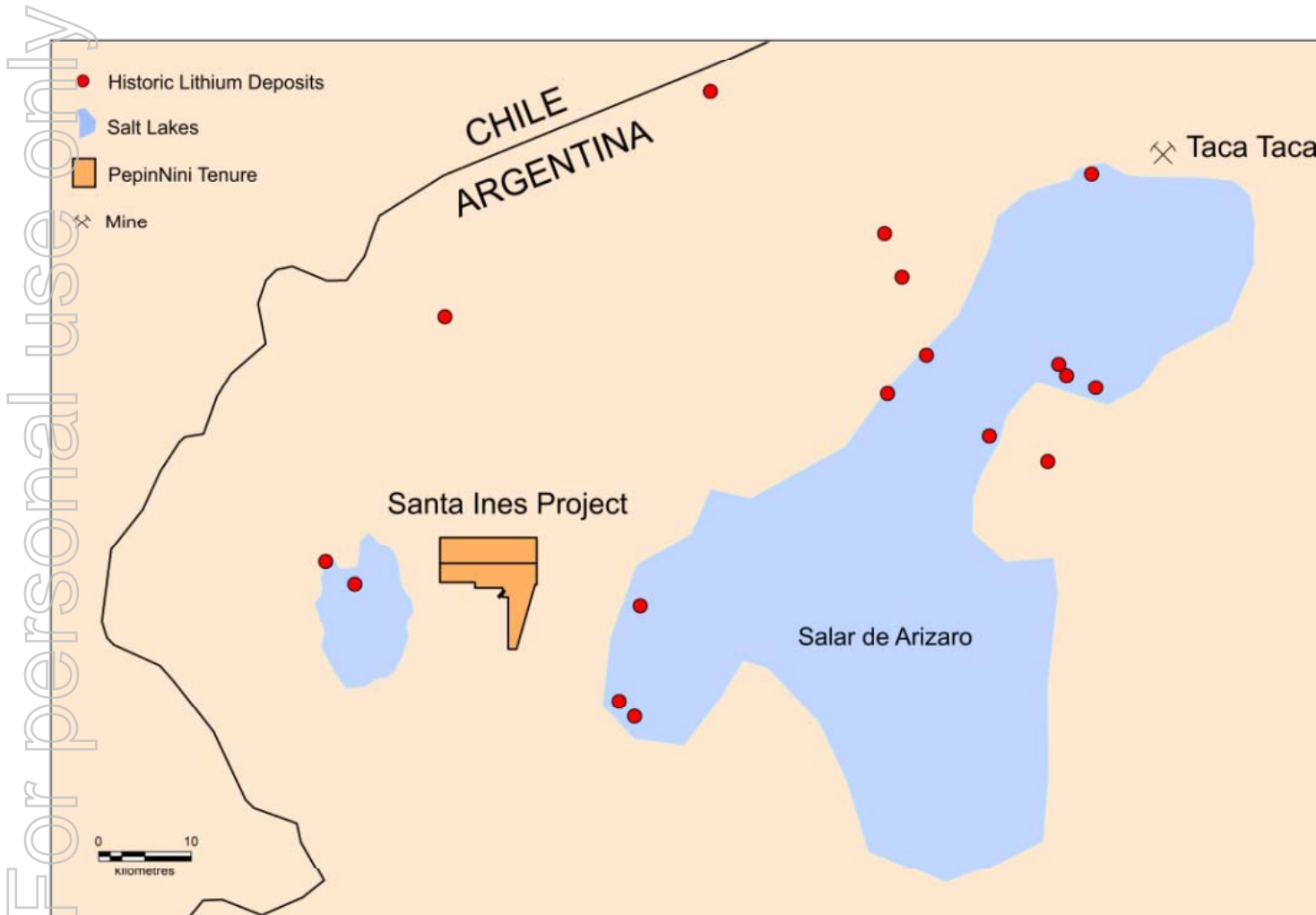
- ❑ Untested Discrete "bullseye" magnetic anomaly
- ❑ Ground unexplored since 1996 airborne regional geophysical survey
- ❑ Logistically feasible and accessible



We Explore

Pepini
Minerals Limited

Argentina - Salta Project – Diverse Commodities



Santa Ines Project

- Targets are Copper Gold and Silver

Salta Lithium Project

- Strategic targets are Lithium brines
- High potential for discovery and development
- Infrastructure available



We Explore

Lithium Brine Exploration – Salta, Argentina

For personal use only



Pepinini

Lithium Brine Lake – Argentine border to Chile

For personal use only



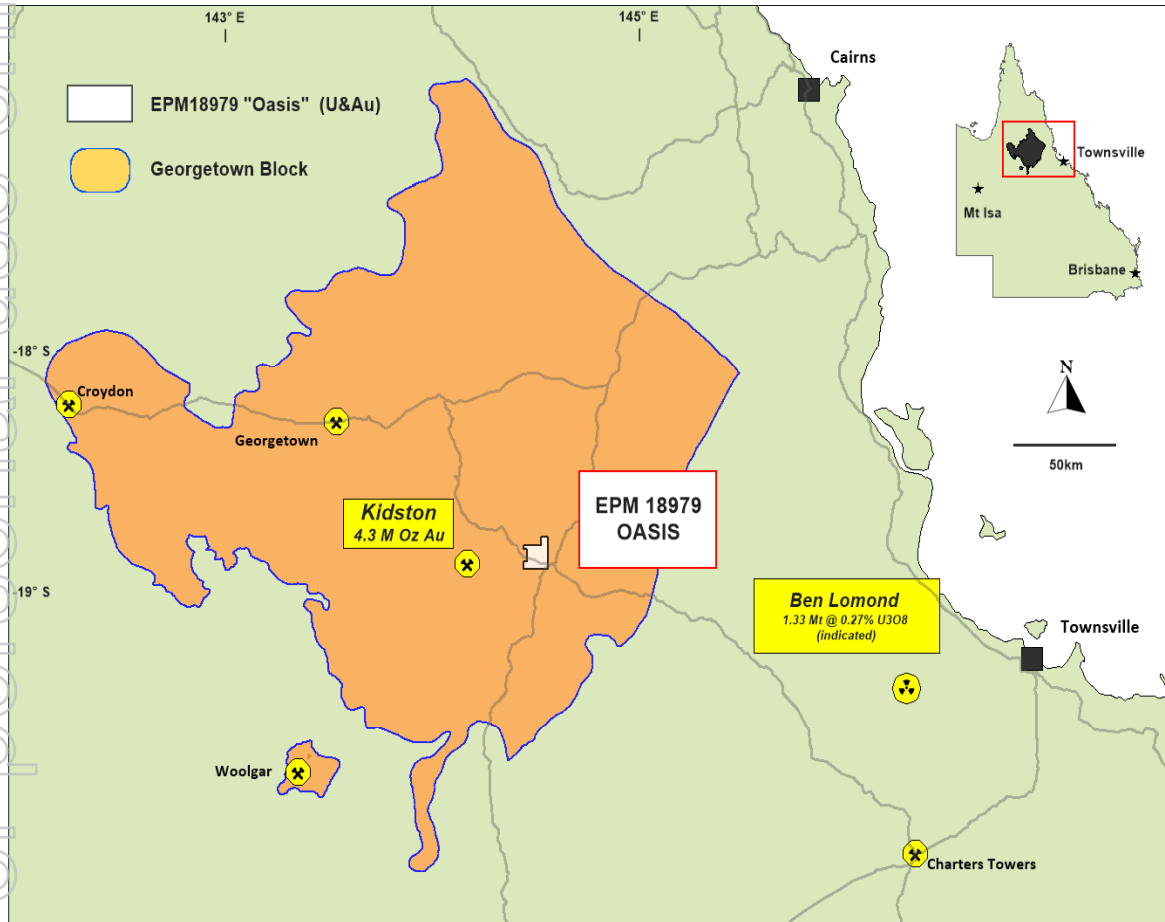
Pepinini



We Explore

Oasis Gold Project –

For personal use only



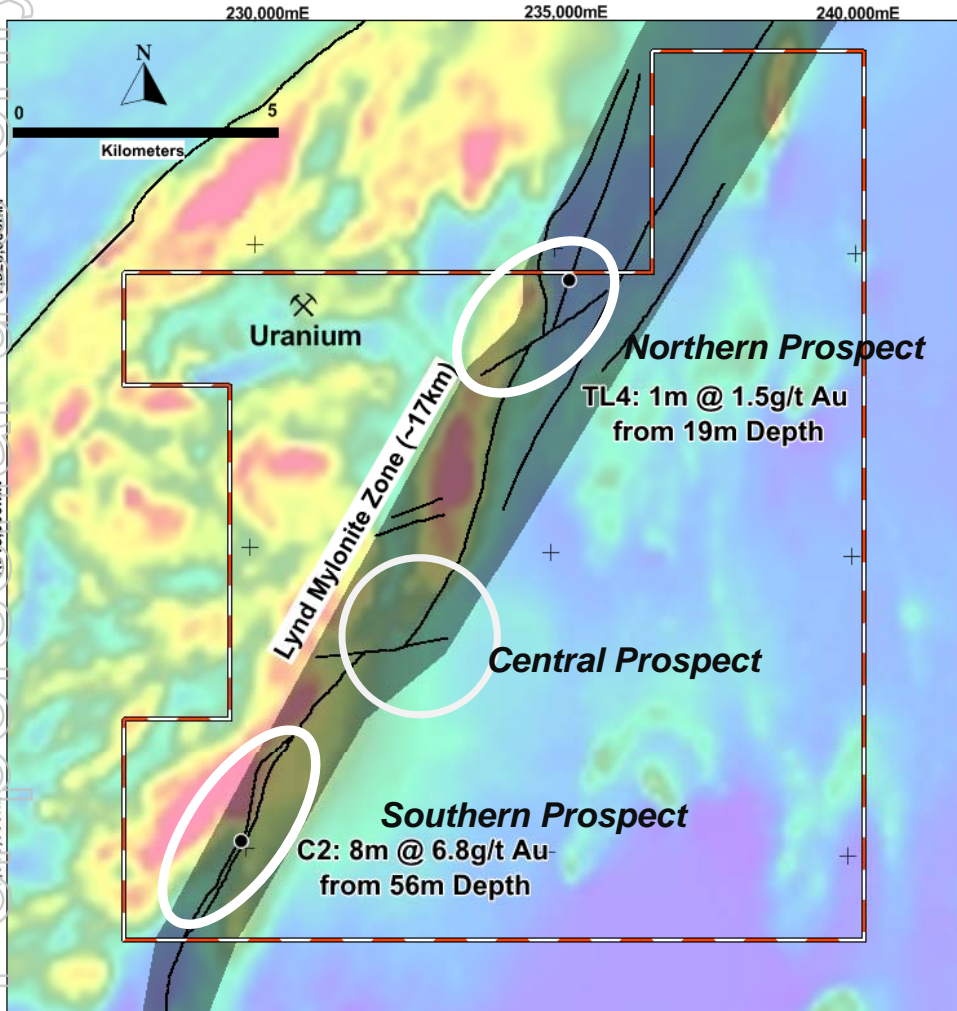
- Known Uranium mineralisation at Oasis
- Historic Gold intersections
- Diligent reinterpretation of geology



We Explore

Pepinini
Minerals Limited

Oasis Gold Project – potential for discovery



- Gold mineralisation potential along Lynd Mylonite zone

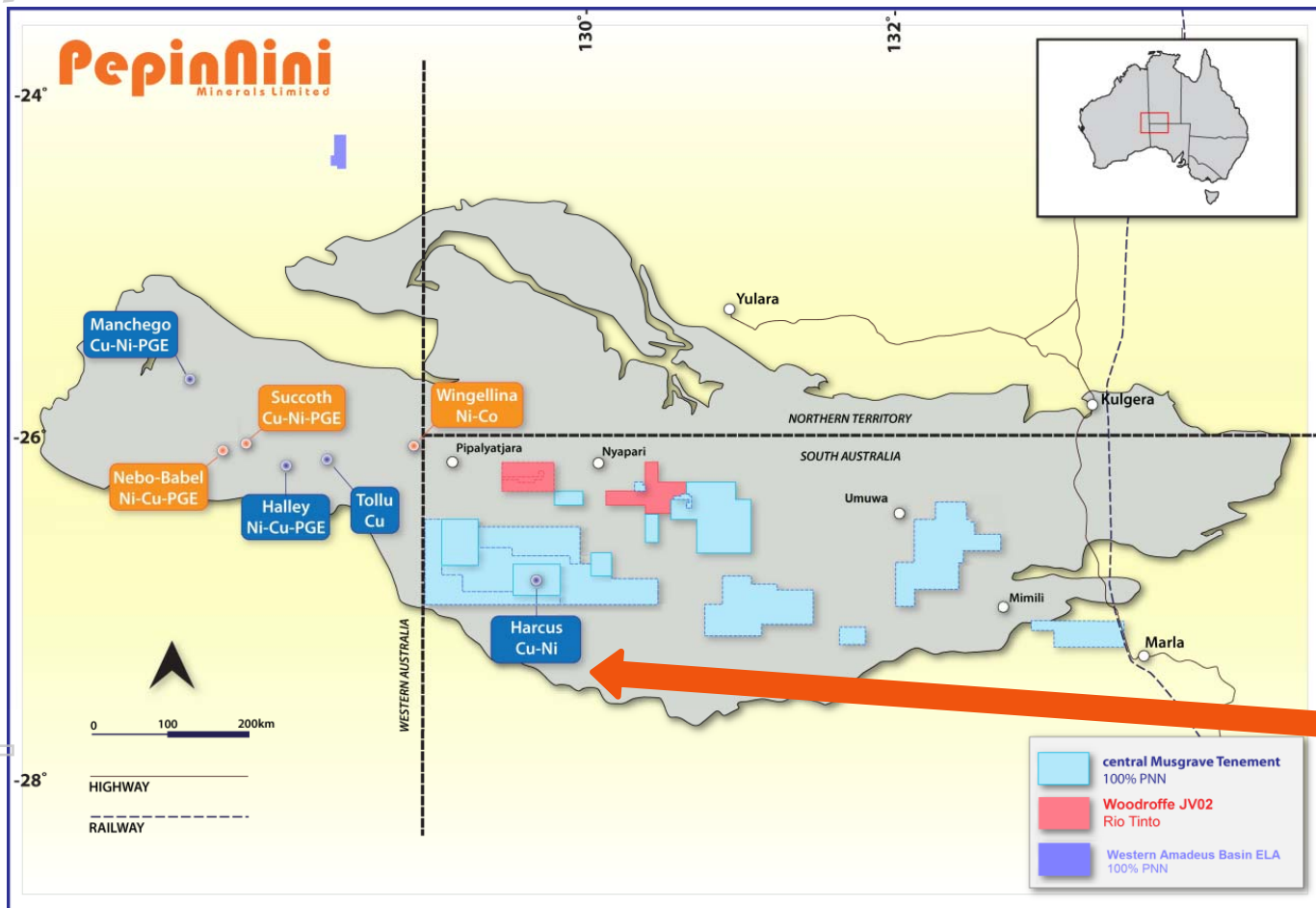


- Potential for epithermal gold deposit
- Field work undertaken and further planned

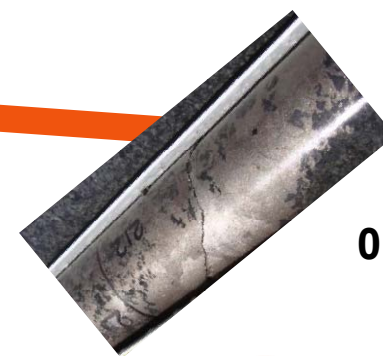


Musgrave – project recap and update

For personal use only



- ❑ 15 tenements of 15,382 km²
- ❑ Prospective for Copper, Nickel and Platinum Group Elements (PGEs)
- ❑ JV with RioTinto



Mt Harcus
0.3% to 0.7% Cu,
0.3% Ni



We Explore

Pepinini
Minerals Limited

Extensive Airborne Electromagnetic Survey planned in collaboration with CSIRO and SA DSD



For personal use only

Positive engagement with Traditional Owners



For personal use only

Portable camp and equipment



For personal use only



Exploration activity planned next 12 months

- ❑ **Musgrave - Airborne Electromagnetic Survey(AEM) - CSIRO and SA DSD**
- ❑ **Argentina – tenure and site verification to tenement application**
- ❑ **Oasis Gold – field work for Northern Prospect and epithermal pathfinders**
- ❑ **Musgrave - Drilling with company drill rigs for targets generated by AEM**
- ❑ **Mozart WA – tenement processing to grant and exploration planning**



We Explore

Pepinini
Minerals Limited

Leadership Group – experience and integrity



Rebecca Holland-Kennedy
B.Sc., B.Arts,
MAusIMM, GAICD
Chief Executive Officer,
Co-founder
Geologist with more than 35 years experience in exploration



Phil Clifford
B.Sc., MAusIMM
Executive Technical Director
Exploration
Geologist with more than 25 years and 15 years with Rio Tinto



Sarah Clifton-Brown
B.Arts, (Hons)
Accountancy,
FCCA, GAICD
Executive Finance Director
Fellow of the Association of Chartered Certified Accountants



Robert (Wei) Sun
M.Econ
(Commerce),
M.Econ (IEM)
Non-Executive Director
Resource investment analyst with experience in international trade and the resource industries of China, Canada and Australia



Justin Nelson
B.Arts
(Jurisprudence)
LLB
Company Secretary
Lawyer, Principal with DMAW Lawyers previously ASX State Manager, South Australia



Nicole Galloway Warland
B.Sc.(Hons), MAIG
Exploration Manager
Geologist with more than 25 years exploration experience and Chair SACOME Exploration Committee



We Explore

PepinNini – a good value investment

Exploration is the backbone of the resources industry, be ready for the upswing -

- ❑ Diverse commodity portfolio
- ❑ Potential Discovery Share Price increase from low base
- ❑ Debt-free
- ❑ Self sufficient exploration capability

April 2016

ASX:PNN

Shares on issue

270,739,774

Options on
issue(unquoted)

7,800,000

*New Targets –
Gold, Lithium
and Diamonds*



We Explore

PepinNini
Minerals Limited

Thank you



Disclaimer and Competent Persons Statement

- The information in this presentation is published to inform you about PepinNini Minerals Limited and its activities. All reasonable effort has been made to provide accurate information, but we do not warrant or represent its accuracy and we reserve the right to make changes to it at any time without notice.
- To the extent permitted by law, PepinNini Minerals Limited accepts no responsibility or liability for any losses or damages of any kind arising out of the use of any information contained in this presentation. Readers are advised to consult a stockbroker or professional adviser before making any investment decisions.
- The information in this presentation that relates to Exploration Results and Mineral Resources is based on information compiled by Philip Clifford BSc MAusIMM. Mr Clifford is the Technical Director of PepinNini Minerals Limited and has sufficient experience which is relevant to the style of mineralisation and type of deposit under consideration to qualify as a Competent Person as defined in the 2012 edition of the "Australasian Code for Reporting of Exploration Results, Mineral Resources and Ore Reserves". Mr Clifford consents to the inclusion in the report of the matters based on his information in the form and context in which it appears.



We Explore

PepinNini
Minerals Limited

We Explore

- ✓ **Gold & Diamonds**
- ✓ **Copper - Nickel**
- ✓ **Lithium**