



SOVEREIGN GOLD
COMPANY LIMITED

Sovereign Gold Company Limited
ACN 145 184 667

Level 2, 131 Macquarie Street
Sydney NSW 2000
Tel: +61 2 9251 7177
Fax: +61 2 9251 7500

Contact

Rocco Tassone, Managing Director

e: corporate@sovereigngold.com.au

Latest News

www.sovereigngold.com.au

Directors / Officers

Charles Thomas (Chairman)
Rocco Tassone (MD)
Patrick Glovac

ASX: SOC

Qualifying Statements

The information in this Report that relates to Exploration Information is based on information compiled by Michael Leu who is a member of The Australasian Institute of Mining and Metallurgy and the Australian Institute of Geoscientists.

Mr Leu is a qualified geologist and is the Chief Geologist of Sovereign Gold Company Limited.

Mr Leu has sufficient experience, which is relevant to the style of mineralisation and type of deposit under consideration and to the activity, which he is undertaking to qualify as a Competent Person as defined in the 2012 Edition of the Australasian Code for Reporting of Exploration Results, Mineral Resources and Ore Resources. Mr Leu consents to the inclusion in this announcement of the Exploration Information in the form and context in which it appears.

Lithium-bearing Pegmatites Exposed at Surface - Crescent Lake

HIGHLIGHTS

- Two Drill ready Spodumene-rich pegmatites located at Dempster L61
- One trend contains surface exposure of 50 meters and a second trend for about 30 meters
- Formal stripping and trenching to trace full near surface dimensions
- Pegmatites exposed at surface providing walk-up drill targets
- Awaiting assays from samples collected
- Exploration Permit approval expected shortly for trenching and drilling
- Further underexplored holdings with potential to discover additional lithium-bearing deposits

Sovereign Gold Company Ltd (**Sovereign Gold** or **Company**) (ASX: SOC) is pleased to provide an update regarding its Crescent Lake Lithium Prospects in Ontario, Canada. Sovereign Gold claims extend northeast 11.5 kms from its contact with the north-western boundary of Ardiden Ltd's (ASX: ADV) Seymour Lake Lithium Project to Argonaut Resources Ltd's (ASX: ARE) Zigzag claims (Crescent Lake area) that contain lithium-bearing pegmatites.

The north-east portion of Sovereign Gold's claims host four lithium-bearing deposits that consist of spodumene-bearing pegmatites named: Dempster L61, Dempster L40, Dempster L28 and Chappais Lake (Figure 1).

Sovereign Gold's in-country geological team has located and sampled the Dempster L61 lithium-bearing pegmatite deposit. The current focus is on the pegmatites at Dempster L61 and the crew will fully assess this location before moving to other showings.

Dempster L61 Deposit

The crews have located two pegmatite dykes at the Dempster L61 deposit area and were able to trace one surface exposure for 50 meters to the NW and a second trend for about 30 meters. Formal stripping and trenching to trace full near surface dimensions will occur following Exploration Permit Approval, advice imminent.

Samples have been collected and will be delivered to Activation Laboratory in Thunder Bay. The outcropping pegmatites provide superb walk-up drill targets that can be collared essentially in mineralisation.

Managing Director Rocco Tassone commented, "Discussions with our in-country geological team were extremely positive, with the potential for L61 to host a potential 70-80 meter strike length."

"We look forward to the team fully assessing the pegmatites and await the results of the samples sent for assaying".

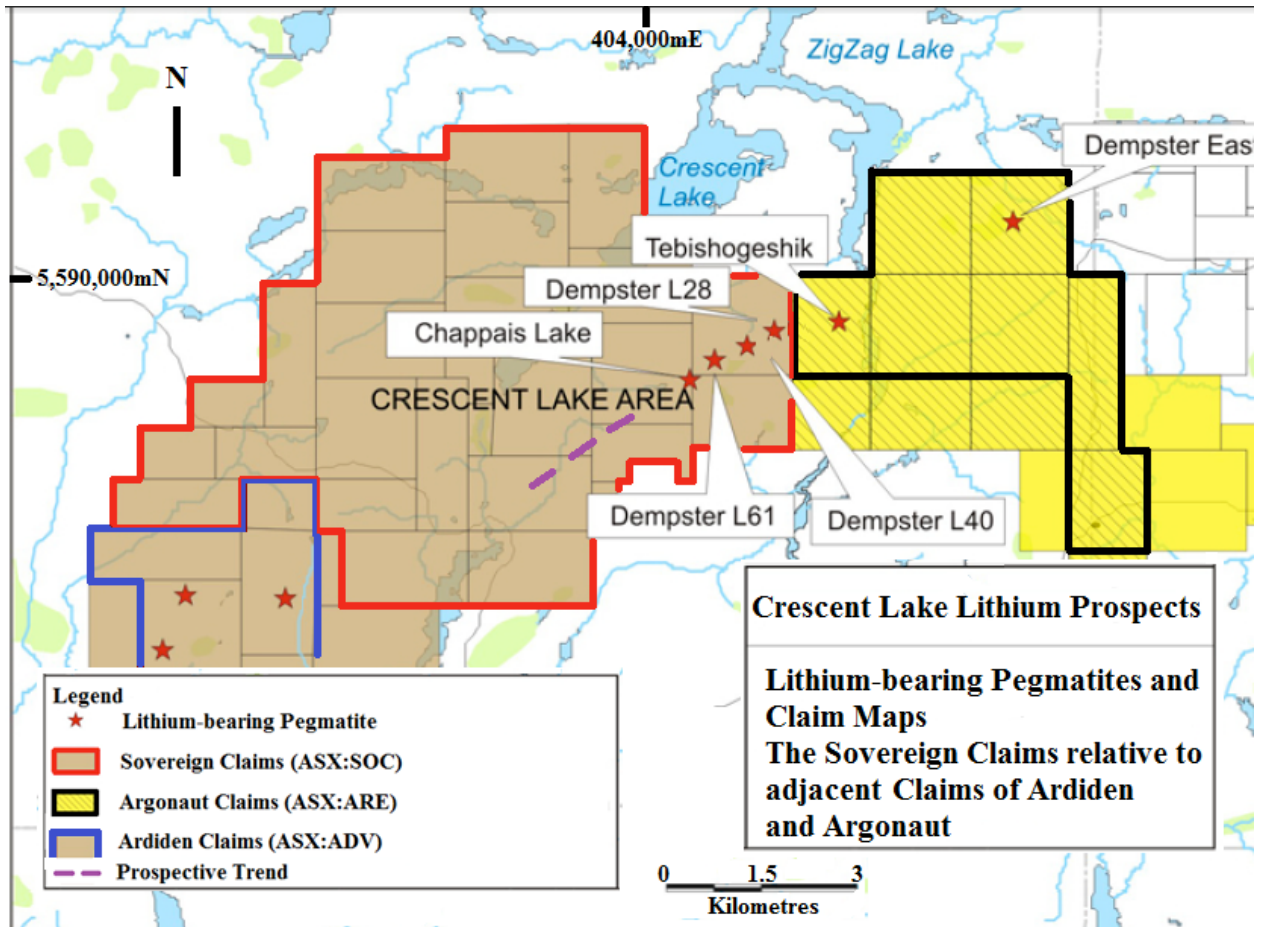


Figure 1: Lithium-bearing Pegmatites and claim map. The Sovereign Gold claims relative to the adjacent claims of Ardiden and Argonaut. The Sovereign Gold claims are underexplored and the geological team will also explore along a highly prospective north-east trend of volcano-sedimentary host rocks that parallels an adjacent intrusive contact. The geologists will especially focus on the area trending north-east from Ardiden's claims as this may result in discovery of new pegmatites.



Sample from the Dempster L61 deposit. Spodumene is the pale green elongated striated mineral (sample ~17cm long left to right).

For personal use only



Sample from the Dempster L61 deposit. Spodumene is the pale green elongated striated mineral (sample ~15cm long left to right).

Location and Infrastructure

The Sovereign Gold claims are located 235 km NE of Thunder Bay, north of Lake Superior in Ontario, Canada.

The project consists of 28 claims excluding the KM61 Mo-Cu-Ag deposit. These areas are accessible by road from Thunder Bay via Armstrong Station 42km from the Sovereign Claims. The rail line is class-one and interconnects with the US.

The Jackfish forestry road system provides access to the property and the port of Thunder Bay is a major facility that transports grain, coal, liquids and general cargo via the Great Lakes to the Atlantic Ocean.

For personal use only



Figure 2: Regional Location, Crescent Lake is situated in the northeast portion of the Sovereign Claims above the four lithium-bearing pegmatite deposits (See Figure 1).

For further information please contact:

Rocco Tassone,
Managing Director
Sovereign Gold Company Limited

Telephone: +61 2 9251 7177

For personal use only