

For personal use only

JUMBUCK GOLD PROJECT



Drilling for Gold in South Australia's
Gawler Craton

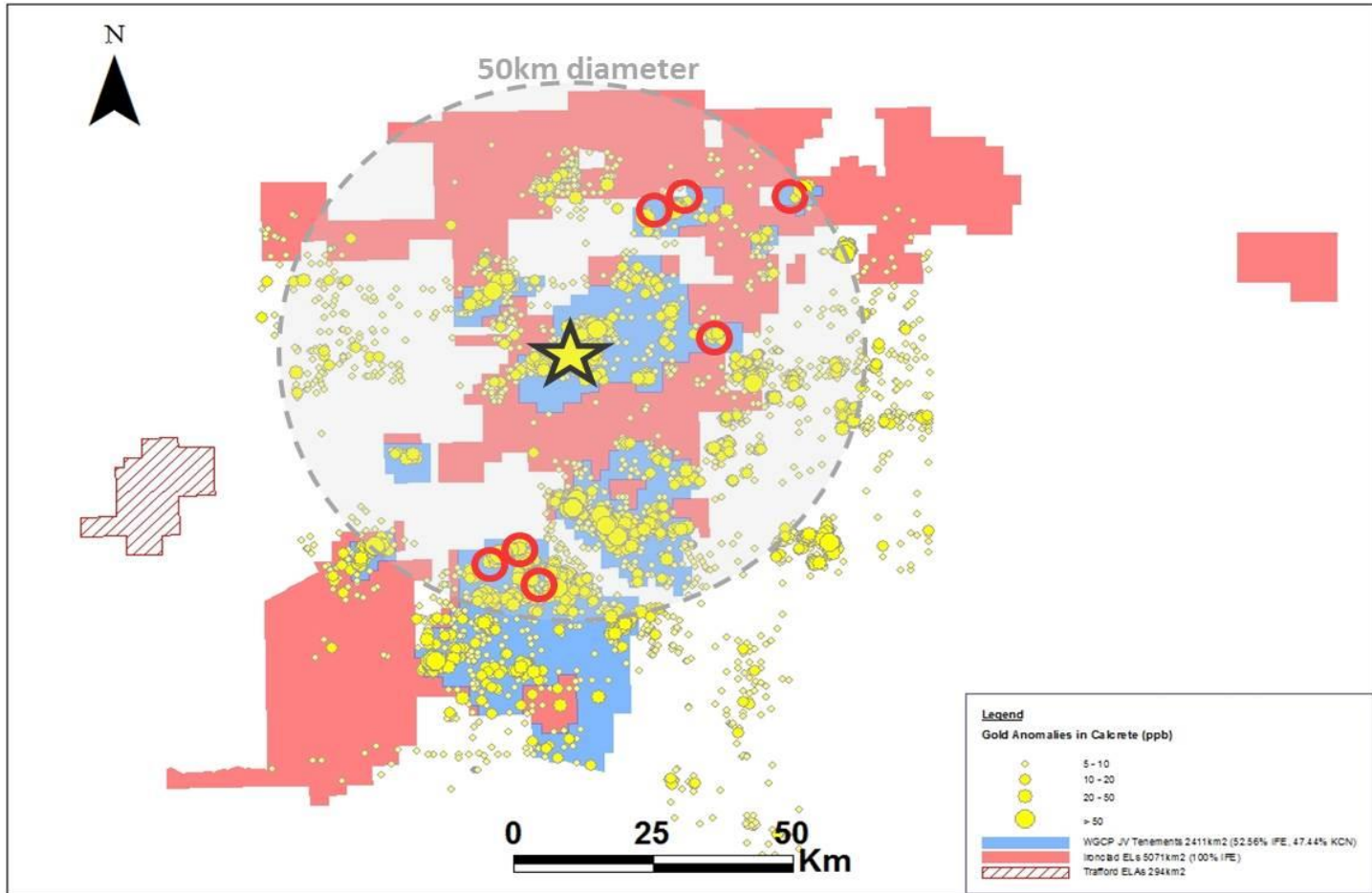
August 2016

COMPETENT PERSON STATEMENT & DISCLAIMER



- *The information that relates to exploration targets, exploration results and drilling data is based on information compiled by Nicholas (Nick) G Revell who is a member of the Australian Institute of Geoscience and who has more than five years experience in the field of activity being reported on.*
- *Nick Revell is a full time employee and the Technical Director of the Company and has sufficient experience which is relevant to the style of mineralisation and type of deposits under consideration and to the activity which he is undertaking to qualify as a competent person as defined in the 2012 Edition of the 'Australasian Code for Reporting of Exploration Results, Minerals Resources and Ore Reserves'.*
- *Mr. Revell consents to the inclusion in the presentation of the matters based on his information in the form and content in which it appears.*
- *This presentation does not purport to provide all of the information an interested party may require in order to investigate the affairs of Tyranna Resources Limited, nor shall it be construed as a solicitation to buy or sell Tyranna securities, or to engage in or refrain from engaging in any financial transaction. In preparing this presentation Tyranna did not take into account the investment objectives, financial situation and particular needs of the individual investors.*
- *Before making an investment decision on the basis of this presentation, the investor needs to consider, with or without the assistance of a financial advisor, whether the investment is appropriate in light of their particular investment needs, objectives and financial circumstances.*
- *This presentation is based on information acquired from associated companies, internal company reports and technical information believed to be reliable but Tyranna does not make any representation or warranty to its accuracy, completeness or currency. Tyranna accepts no obligation to correct or update the information or opinions expressed in it. Opinions expressed are subject to change without notice and accurately reflect the views of Tyranna at the time of presenting. Photographs, unless captioned, are not from the project area.*
- *This presentation has originated from Tyranna Resources Limited.*
- *Exploration Target (Target) Statement:
An Exploration Target (Target) does not constitute the definition of any resource, which is compliant with the JORC Code. Target tonnages and grades contained herein are conceptual in nature and may or may not be realised through completion of further exploration and other studies on the targets described. As such, it is uncertain if further exploration will result in the determination of tonnages and grades that conform to mineral resources or ore reserves under the JORC code*

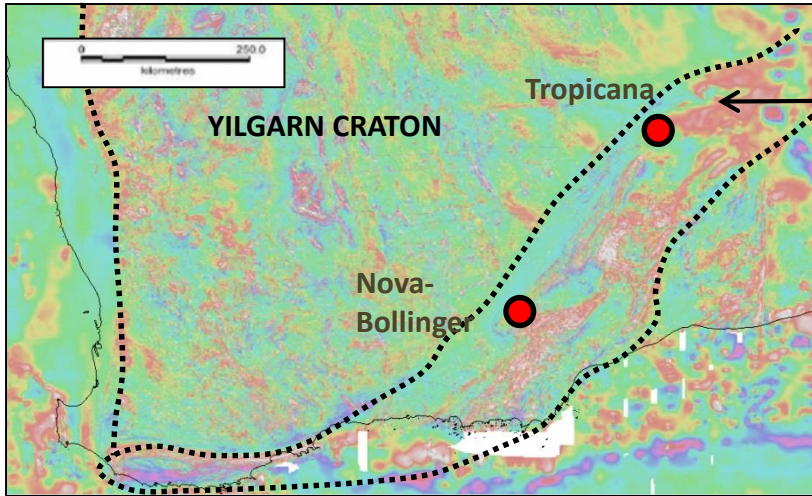
A NEW GOLD PROVINCE...



For personal use only

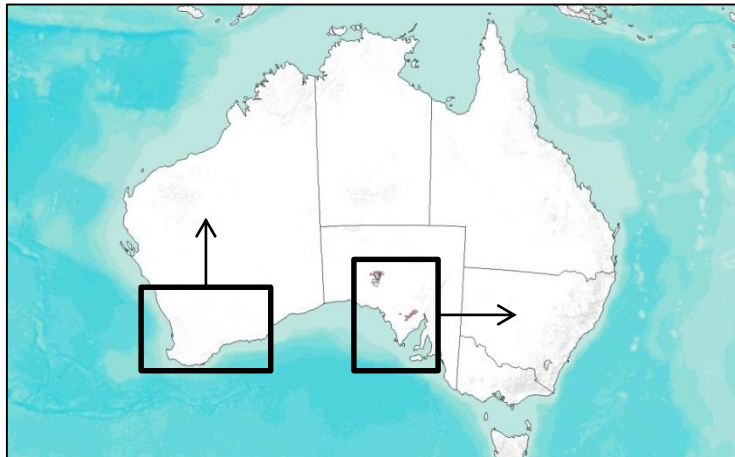
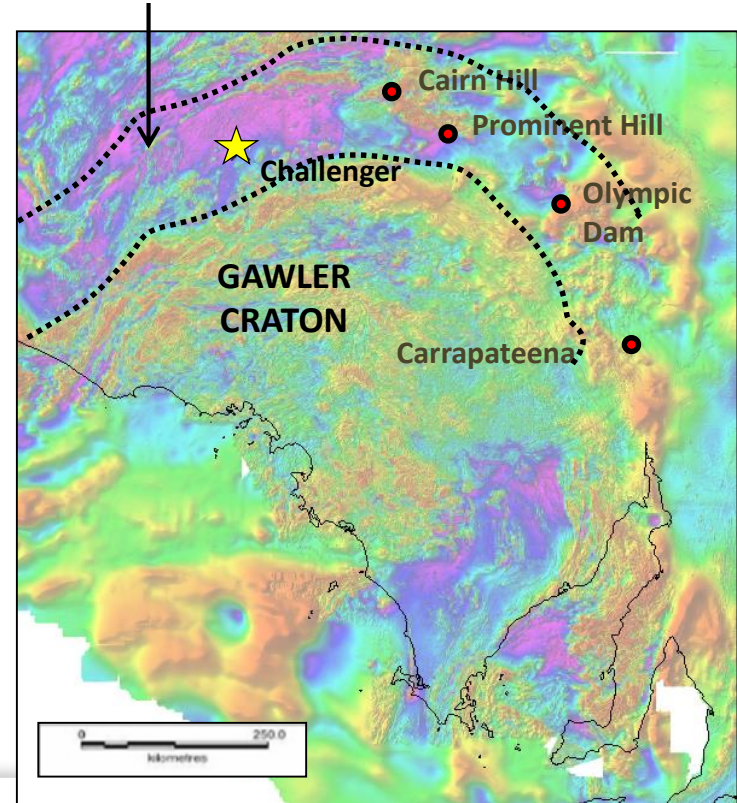
THE NEXT FRASER RANGES?

For personal use only



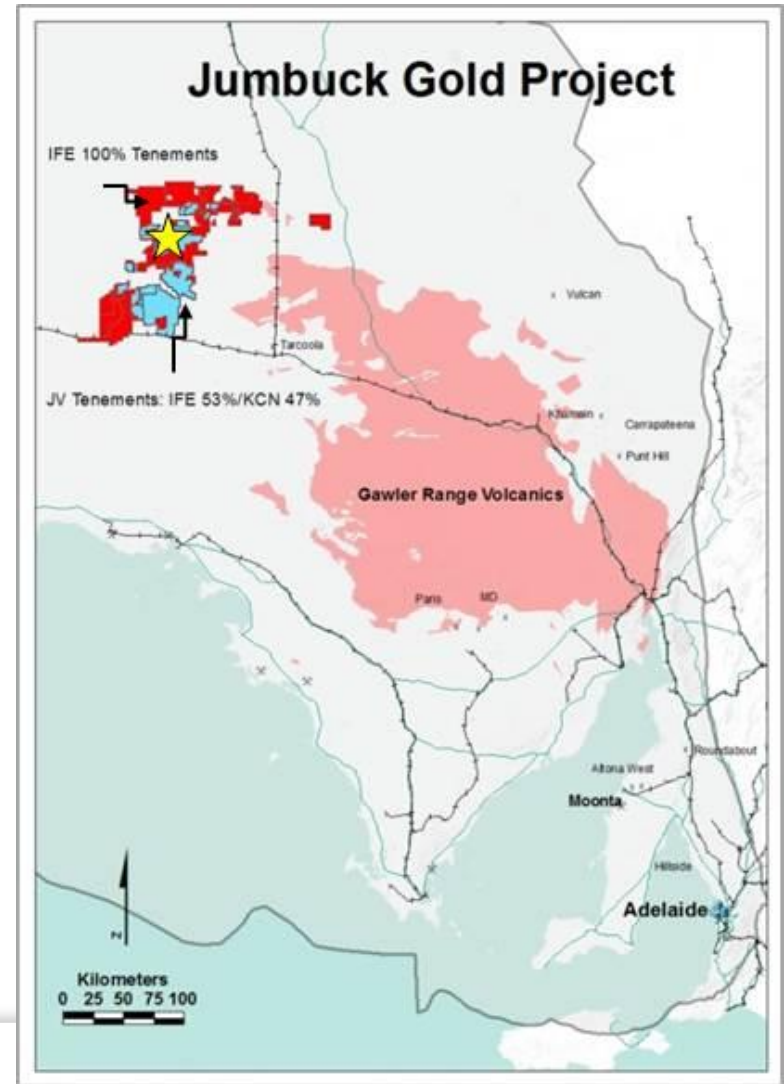
ALBANY-FRASER MOBILE BELT

CHRISTIE-MULGATHING MOBILE BELT



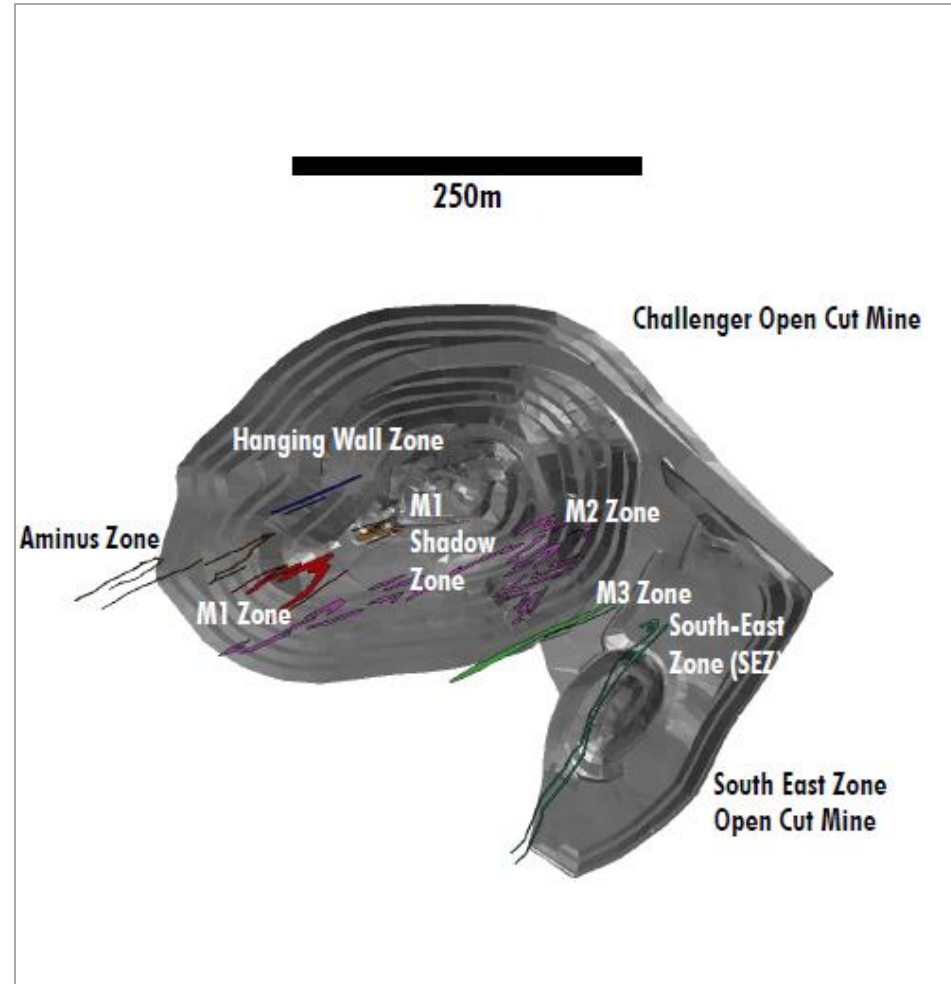
DOMINANT LAND POSITION

- Tyranna has the largest and most prospective land holding.
- Controls **+8,000km²** around Challenger Gold Mine
- **+\$20M** spent on exploration
- Resurgent activity in Western Gawler Craton



CHALLENGER GOLD MINE

- High grade gold - surface to 1km
- **>1Mill oz @ 6g/t Au** since 2002
- **108,000Oz @ 9.52g/t Au** at its peak (2005-06)
- New zones discovered during mining
- ***Regional exploration since discovery has been sparse***



Source: Kingsgate 2015

Corporate Objectives 2016

- Upgrade and extend known prospects in order to increase resource ounces of project (target 500,000 ounces)
- Make new high grade discovery
- Earn in max JV % and develop potential of 100% ground
- Develop potential mining feasibility of one or more prospects with centrally located plant

Resource at "Golf Bore"

Target **150,000 Oz**
@ ~2 g/t Gold



Drill Greenwood, Campfire Bore, Mainwood

Target **500,000 Oz**
@ ~2 g/t Gold Resource



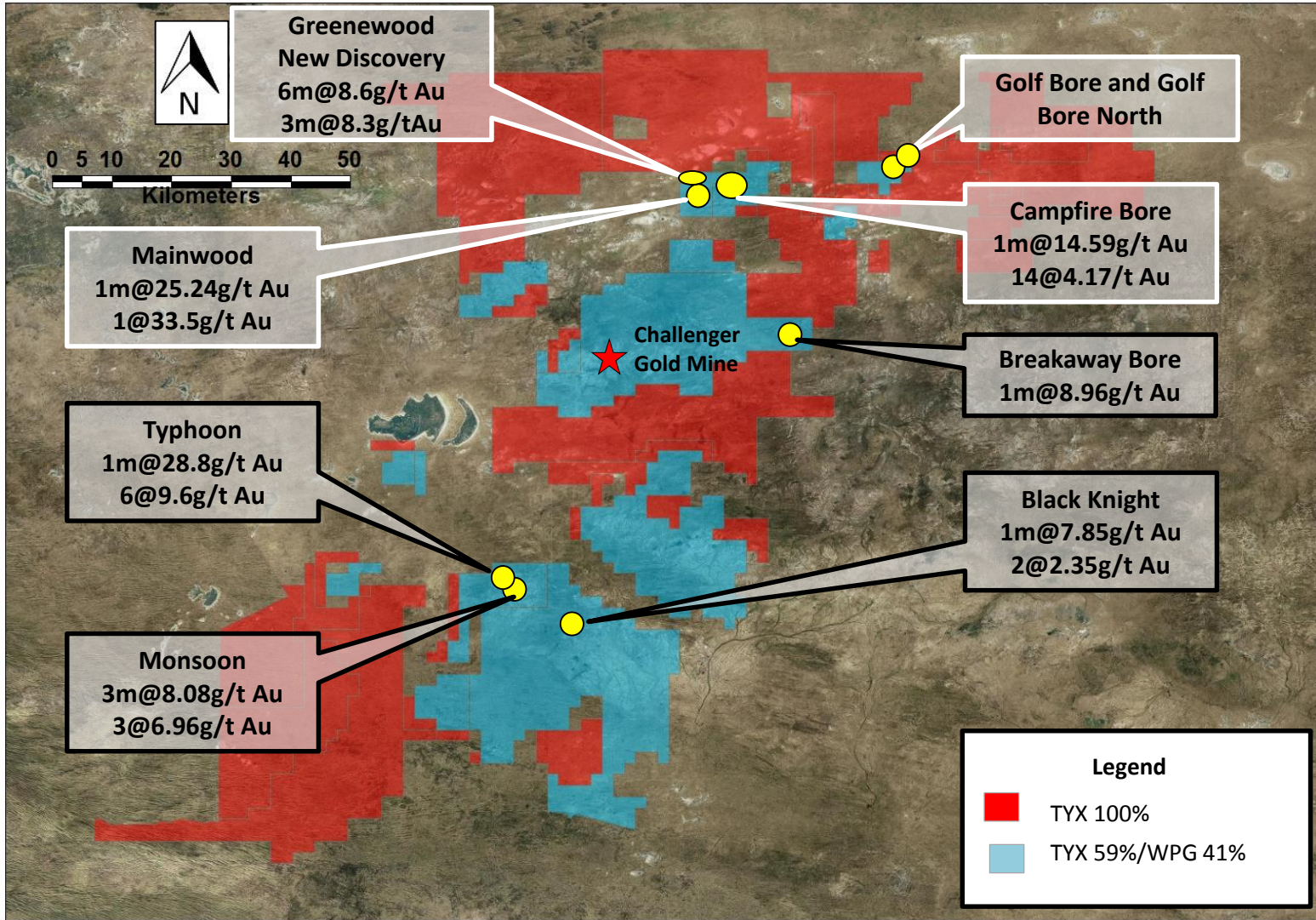
+/- 250,000 Oz Reserve



Mine – Centrally Located Plant



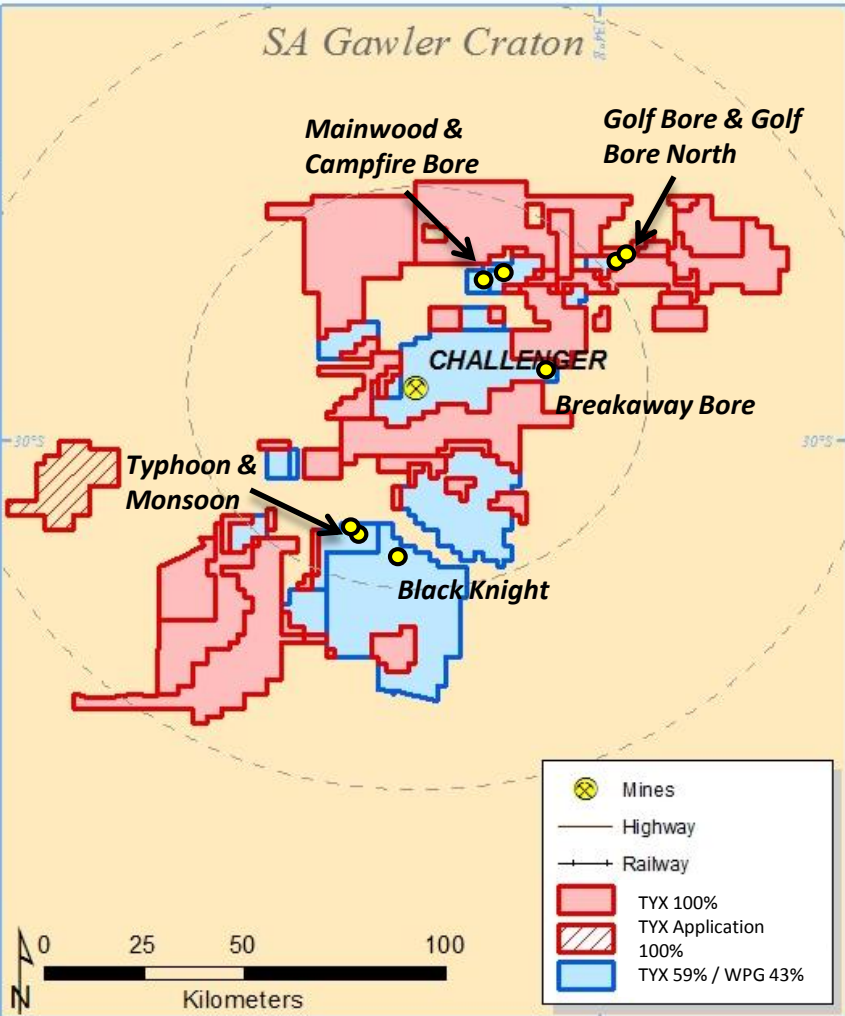
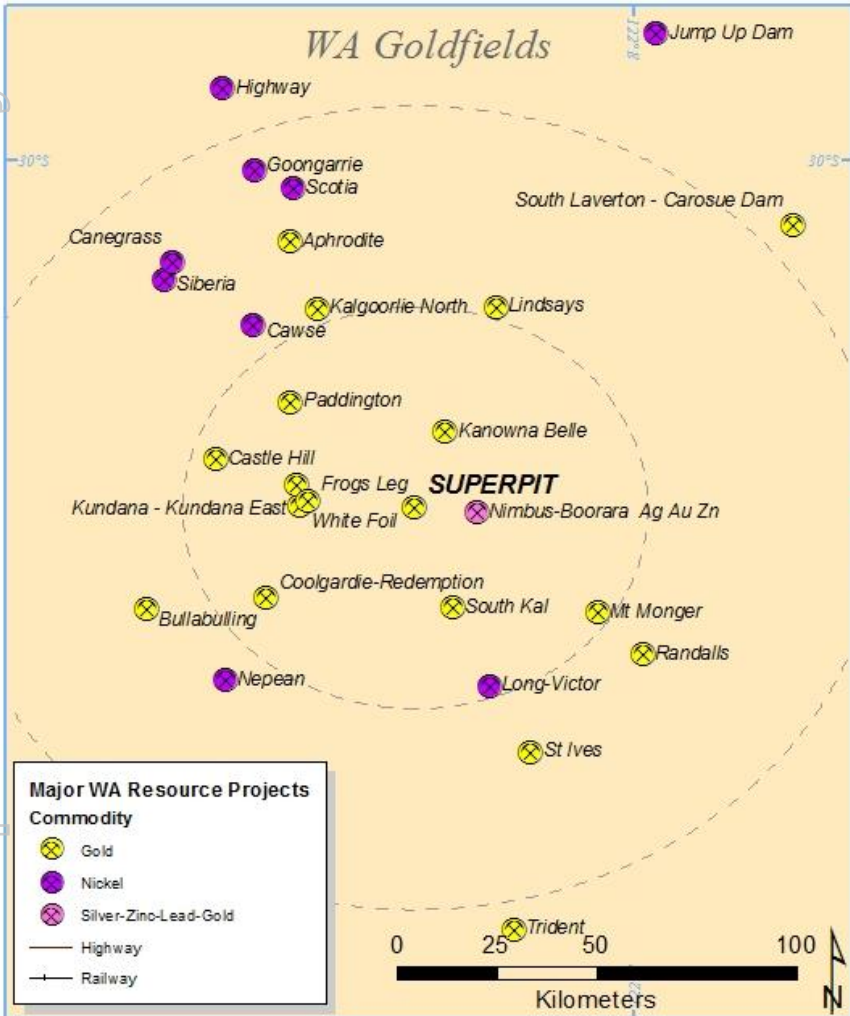
PRIORITY PROSPECTS



For personal use only

SIZE POTENTIAL – WA GOLDFIELDS

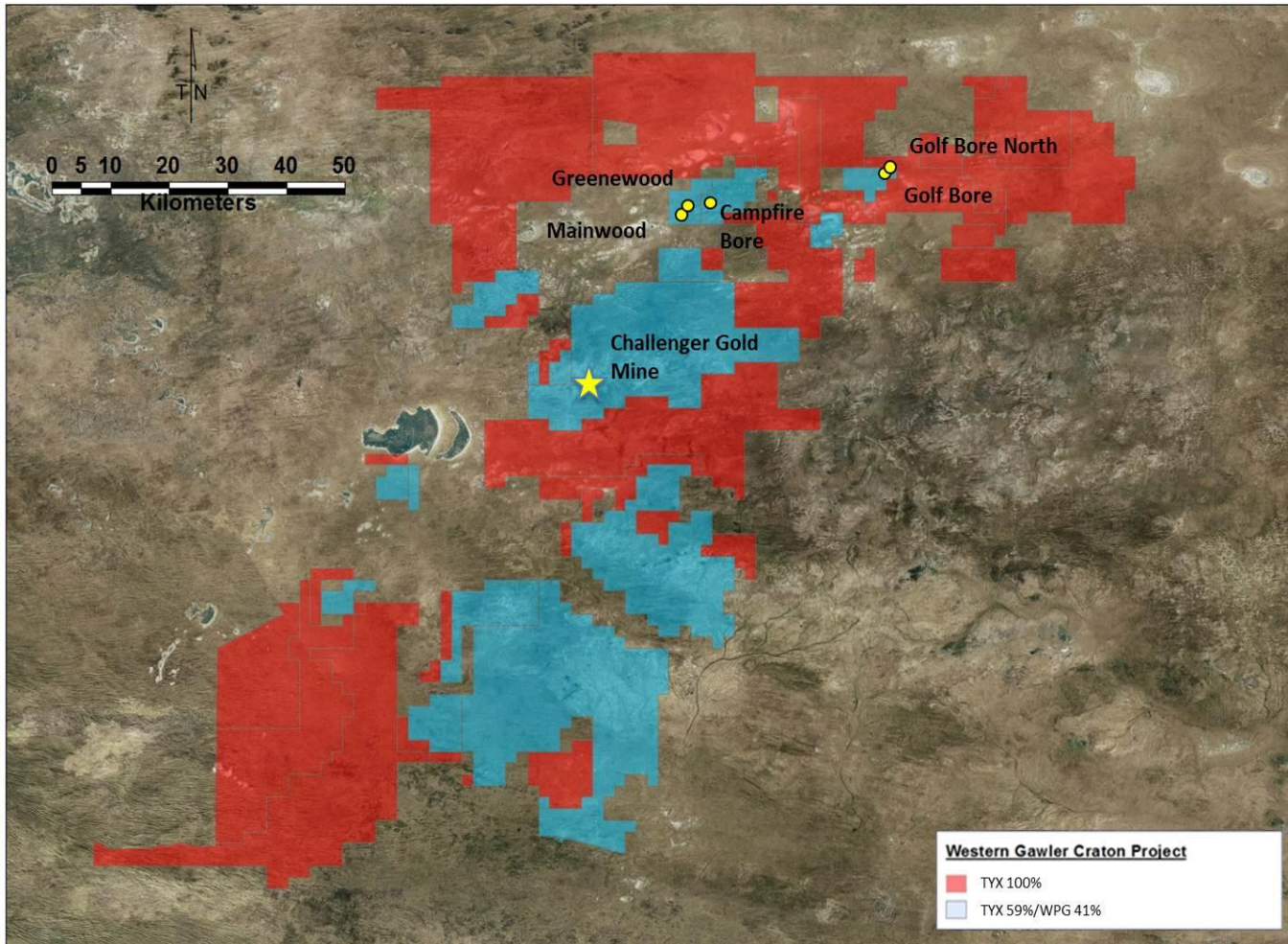
For personal use only



THE JUMBUCK GOLD PROJECT

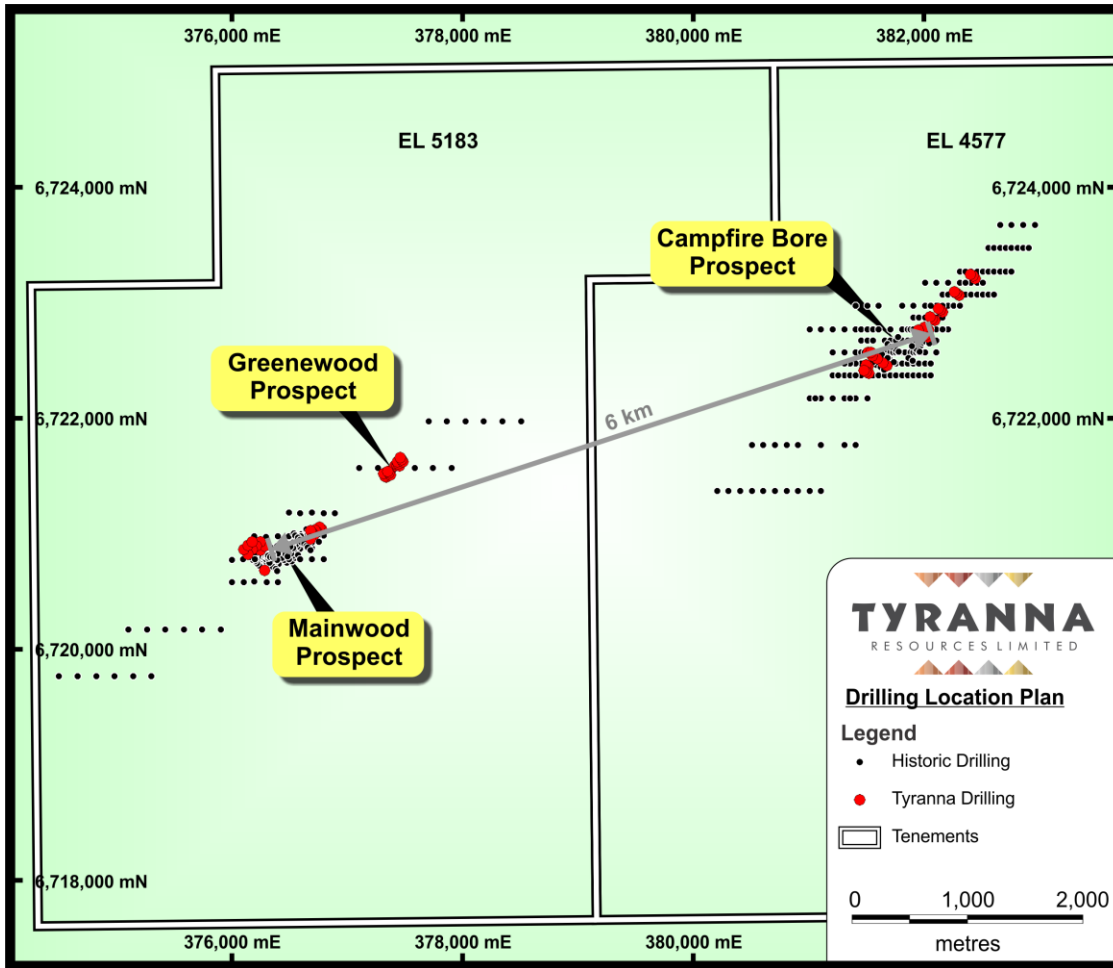
2016 H2 Drill Targets

For personal use only



Mainwood-Greenewood-Campfire Bore

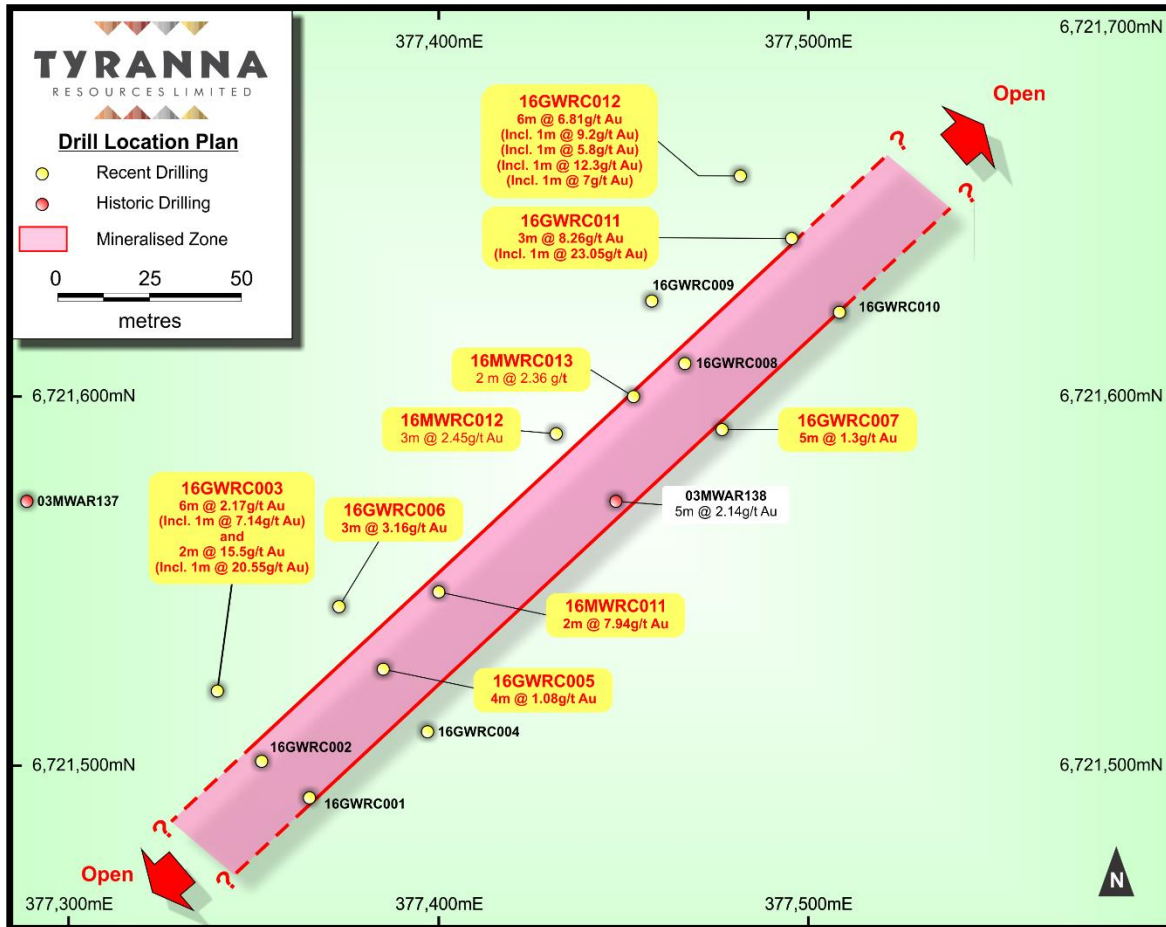
For personal use only



- Potential for a continuous trend - greater resource potential
- Geophysics planned for second half 2016 to pinpoint the structure
- Only 37 kms to Challenger Gold Mill

Greenewood

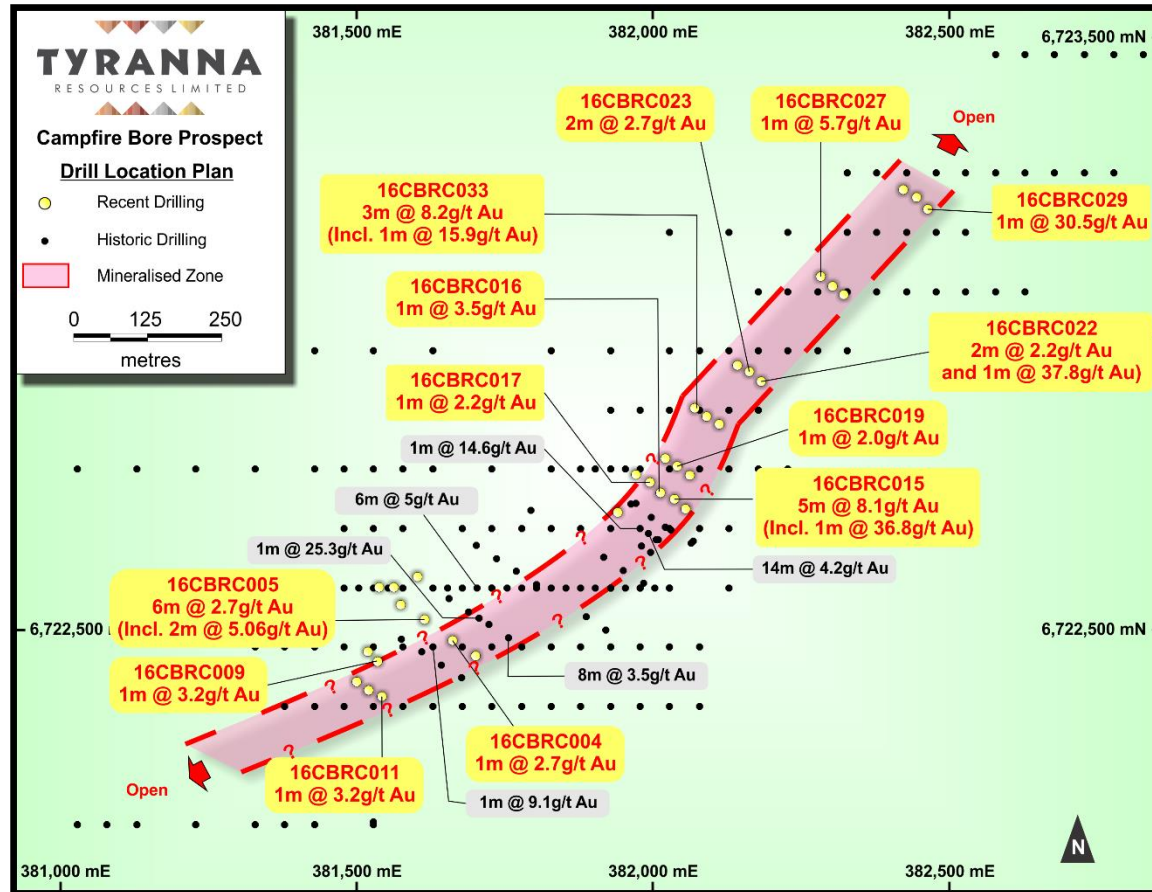
First Significant Discovery in 18 Years



- First prospect discovered without the use of calcrete geochemistry
- Open to north, south and down dip
- Potential to join up with Mainwood 600m to south, this would define a strike length of 1.6km
- 80% of holes drilled to date have intersected gold

Campfire Bore

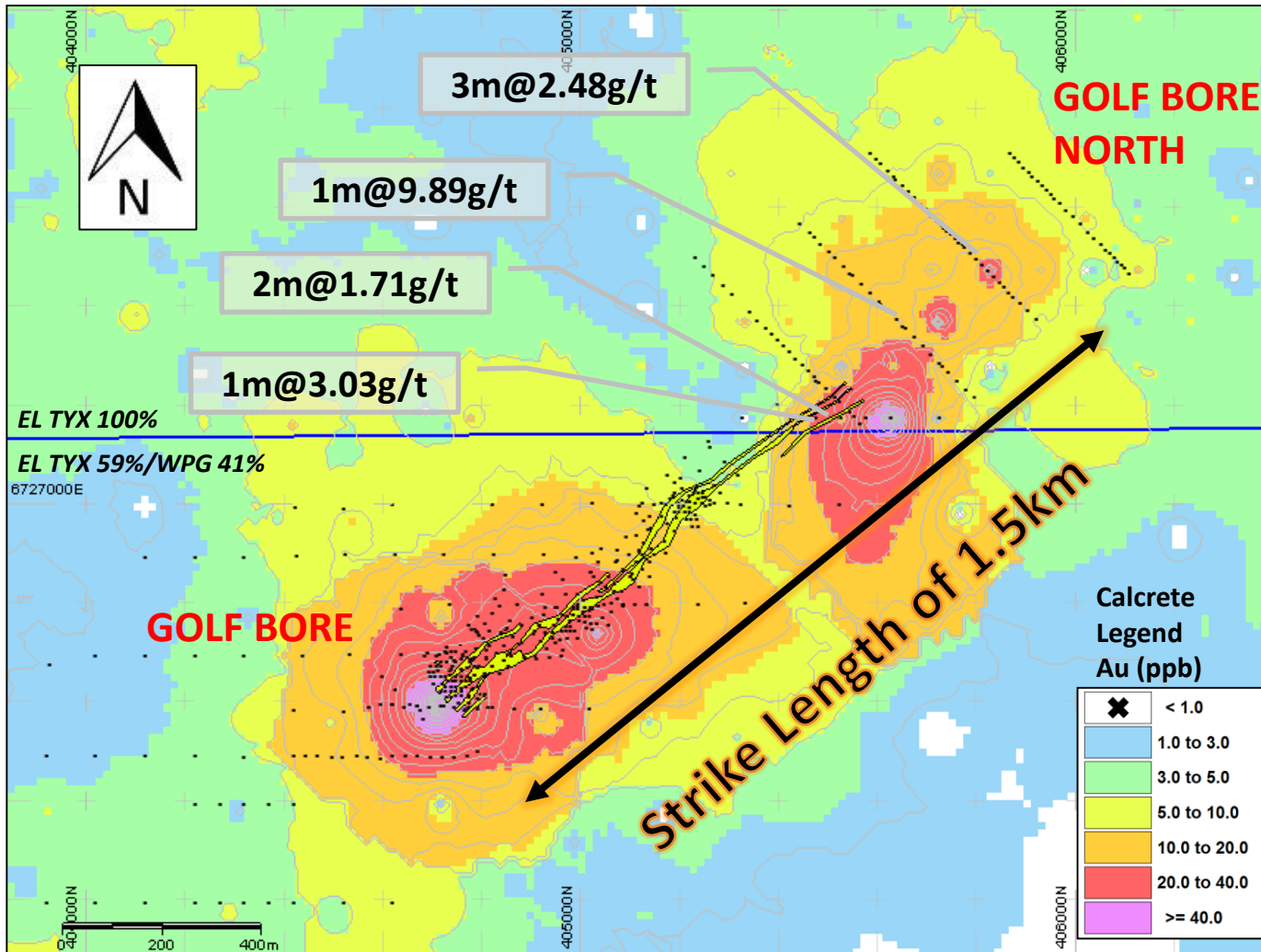
Highest Grade Gold Hits to Date



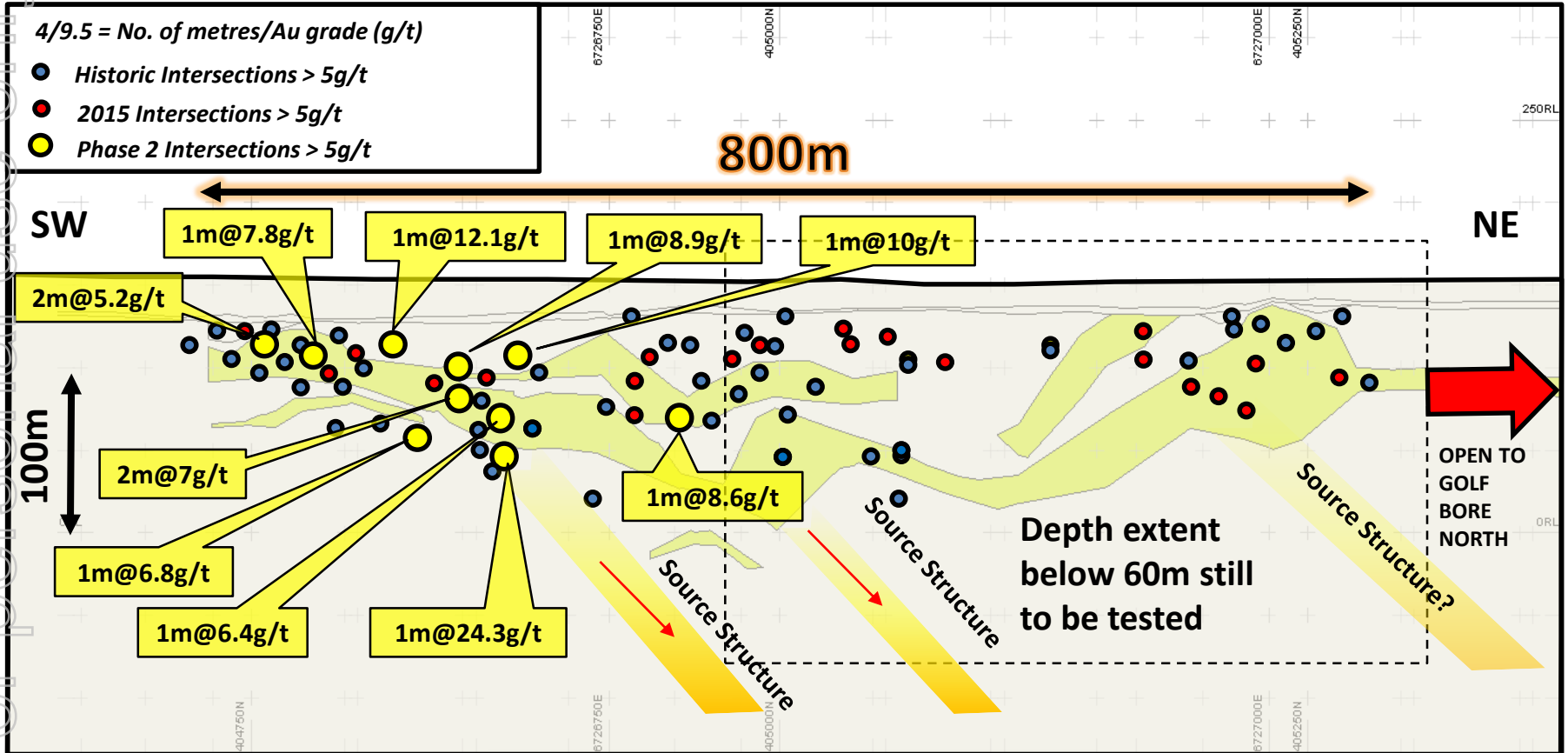
- Four new intersections over 15g/t Au on separate, wide spaced lines
- Mineralised strike length now extended to 1.25km (from 500m)
- Gold mineralisation is open along strike and down dip
- Geochemistry suggests a continuation of the structure
- New Interpretation of surface geochemistry proving very successful

Golf Bore & Golf Bore North

For personal use only



GOLF BORE



Timeline – 2nd Half 2016

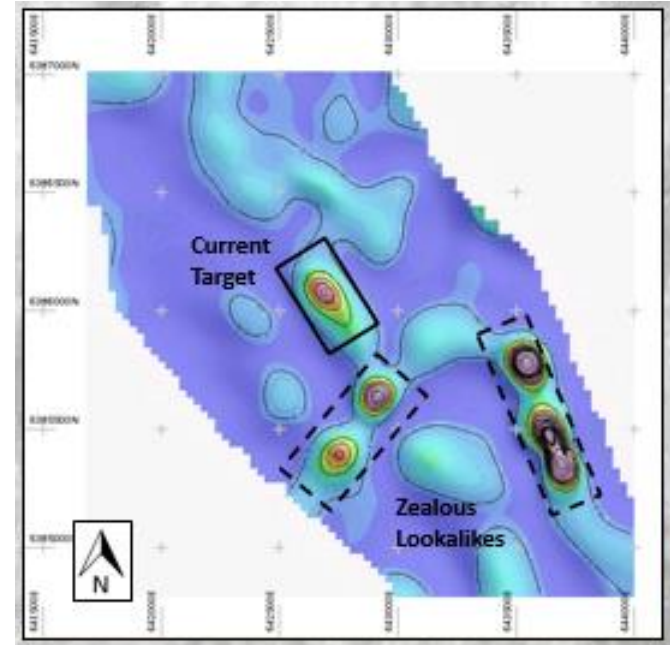
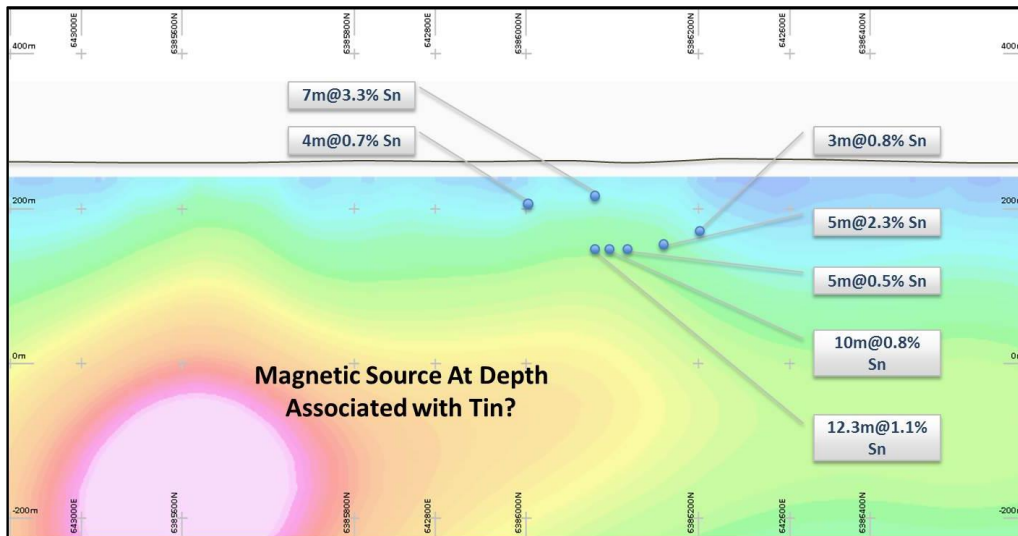
- **Geophysics August/September 2016**

- **Drilling commences August/September**
 - **Greenwood down-dip/strike extension 1,100m**
 - **Campfire Bore down-dip/strike extension 1,400m**
 - **Typhoon 1,000m**
 - **Monsoon 1,000m**
 - **Revisit results @ Greenwood/Campfire Bore 1,000m ??**
 - **Diamond drilling 500m ??**

- **Drilling Completed November 2016**

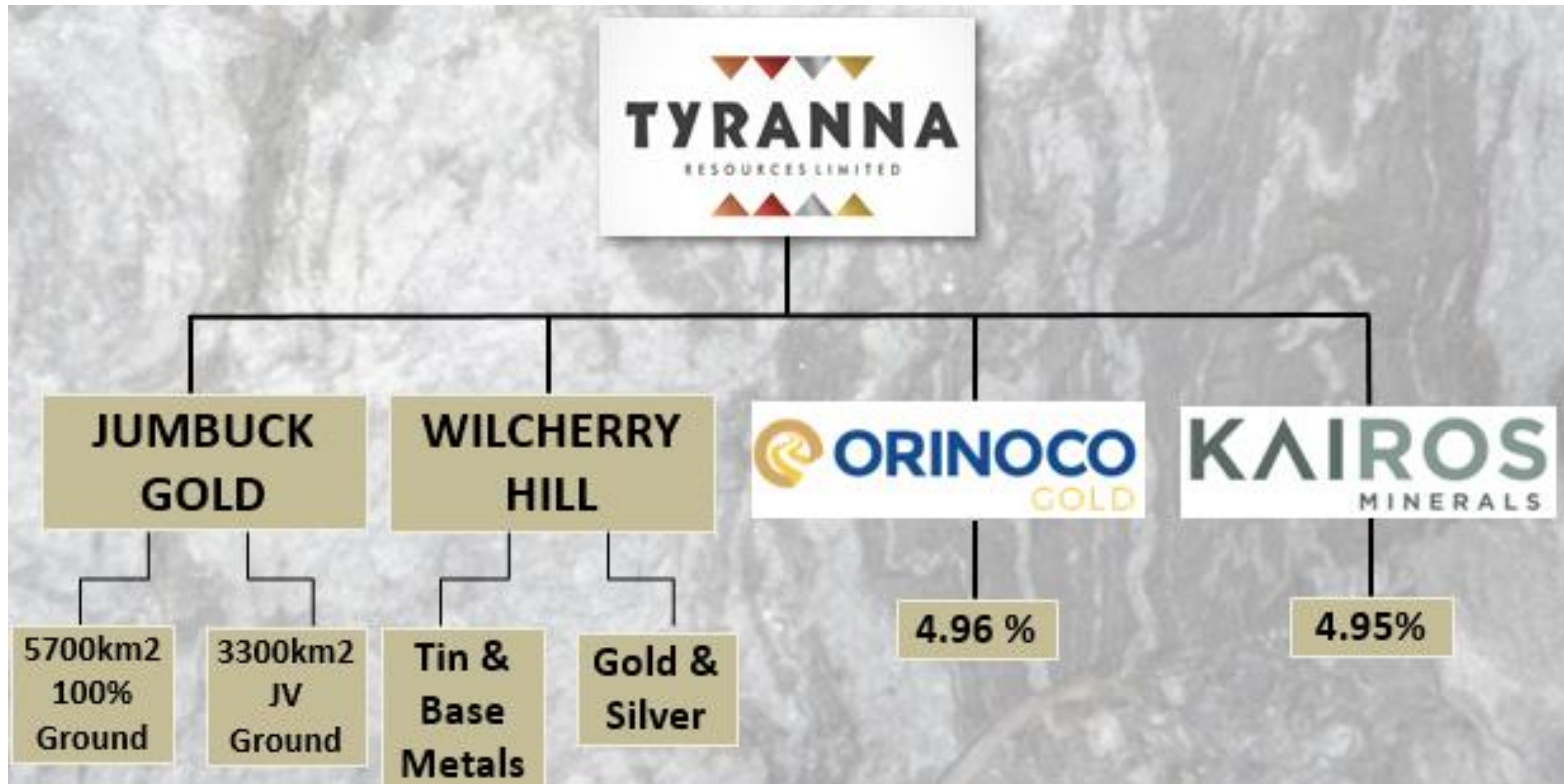
- **Results September – December 2016**

Currently Drilling Wilcherry Hill – Zealous Tin Prospect Potential for New Tin Province in SA



- **Maiden Tin discovery in 2012**
- **Magnetic source to be drill tested**
- High grade with results of up 1m@6.81% Sn
- Near surface
- Tin associated with iron oxides in the regolith
- Magnetic source detected at depth suspected to be associated with elevated Tin

INVESTMENTS



OGX: 14m Shares = \$3.5m - High grade gold in Brazil - production commissioning
KAI: 18m Shares = \$0.9m – Lithium/Gold adjacent to PLS' Pilgangoora Lithium Deposit

WHY INVEST?

- **Drilling for +1M Oz Challenger “look-a-likes”**
- **Extensive New Gold Province**
- **First Mover Advantage**
- **Building Gold Resources**
- **Extensive Drilling Planned 2nd Half 2016**
- **Emerging Australian Gold Explorer**

CORPORATE PROFILE

ASX: TYX

New Board of Directors

Joseph Pinto – Chairman & Largest Shareholder (Solicitor & Barrister – 33 years experience)

Bruno Seneque – Managing Director (CPA - 19 years experience in mining industry)

Nick Revell – Technical Director (Geologist - 25 years experience as exploration/mine geologist)

Frank Lesko – Non-Executive Director (Successful resources investor, construction background)

- **Shares on Issue..... 337.7 M**
- **Options on Issue (listed)..... 55.3 M**
- **Options on Issue (unlisted).....14 M**
- **Share Price..... 3.6c**
- **Market Capitalisation..... \$12 M**

For personal use only

JUMBUCK GOLD PROJECT



THANK YOU
