

Great Boulder
RESOURCES LIMITED

For personal use only

Strong Project Portfolio

World-Class Gold Address

November 2016



Important Information

Purpose of presentation: This presentation has been prepared by Great Boulder Resources Limited (ACN 611 695 955) (GBR). It is intended for the sole purpose of providing high-level background information on GBR, its projects and its proposed operations. This presentation is not investment advice and should not be relied upon to make any investment decision.

Nature of presentation: This presentation is not a prospectus, product disclosure statement or other investment disclosure document, and the level of disclosure in this presentation is less than such disclosure documents. It does not purport to contain all of the information that a prospective investor may require to make an evaluation of GBR or its business activities and nothing in this presentation is, or is intended to be, a recommendation to invest in GBR. GBR does not purport to give financial or investment advice. No account has been taken of the objectives, financial situation or needs of any recipient of this presentation.

No offer: This presentation does not make or contain any offer of securities or any other offer to invest in GBR to any person. Potential investors should consider GBR's Prospectus dated 12 September 2016 (Prospectus), available on its website, www.greatboulder.com.au and GBR's announcements to ASX.

Professional advice: Recipients of this presentation should consider seeking appropriate professional financial, taxation and legal advice in reviewing the presentation and all other information with respect to GBR and evaluating its business, financial performance and operations.

Forward-looking statements: This presentation contains forward-looking statements which may be predictive in nature and incorporate an element of uncertainty or risk, such as 'intends', 'may', 'could', 'believes', 'estimates', 'targets' or 'expects'. These statements are based on an evaluation of current economic and operating conditions, as well as assumptions regarding future events. These events are, as at the date of this presentation, expected to take place, but there cannot be any guarantee that such will occur as anticipated, or at all, given that many of the events are outside GBR's control. The stated events may differ materially from results ultimately achieved. Accordingly, neither GBR nor any of its directors, employees, contractors or advisors make any warranty or assurance that the results, performance or achievements expressed or implied by the forward-looking statements contained in this presentation will actually occur. Further, other than as required by law, GBR may not update or revise any forward-looking statement if events subsequently occur or information subsequently becomes available that affects the original forward-looking statement.

Disclaimer: Neither GBR nor its officers, employees, contractors or advisers make any warranty (express or implied) as to the accuracy, reliability, relevance or completeness of the material contained in this presentation. Nothing contained in this presentation is, or may be relied upon as a promise, representation or warranty, whether as to the past or the future. GBR excludes all warranties that can be excluded by law. Except for statutory liability which cannot be excluded, GBR, its officers, employees, contractors and advisers expressly disclaim any responsibility for the accuracy or completeness of the material contained in this presentation and exclude all liability whatsoever (including in negligence) for any loss or damage which may be suffered by any person as a consequence of any information in this presentation or any error or omission therefrom.

Proprietary information and copyright: This presentation and the information it contains is proprietary to GBR. GBR holds the copyright in this paper. Except as permitted under the Copyright Act 1968 (Cth), this paper or any part thereof may not be reproduced without its written permission.

Exploration Results: The information in this presentation concerning exploration results on GBR's projects is contained in the Prospectus dated 12 September 2016 (released as announcement on the ASX on 16 November 2016) and GBR's announcement to ASX dated 18 November 2016 entitled "Impressive Surface Gold and Geochemistry from Jundee South Project". GBR confirms that in not aware of any new information concerning exploration results that materially affects the information included in the Prospectus and announcement dated 18 November 2016.

Company Strategy

Location, Talent, Momentum

- The Company's exploration strategy is to focus on well-endowed gold districts, close to existing major gold mines and discoveries, such as the:
 - Kalgoorlie Super Pit;
 - Jundee Gold Mine near Wiluna;
 - King of the Hills and the Gwalia Gold Mine's near Leonora;
 - Thunderbox Gold Mine near Leinster; and
 - Gruyere gold deposit near Laverton.
- We have assembled a specialist team in the identification and discovery of gold systems with particular experience and success in the Eastern Goldfields
- At our flagship Balagundi project we are working towards resource definition drilling prior to assessing stand-alone or toll-treatment development options
- Tarmoola and Jundee South offer high quality, large scale exploration targets in mature and active gold mining camps
- Broadwood and Yamarna are early stage prospects in regions that are receiving significant exploration and development activity from gold mining majors



Strong Project Portfolio



Strong Team

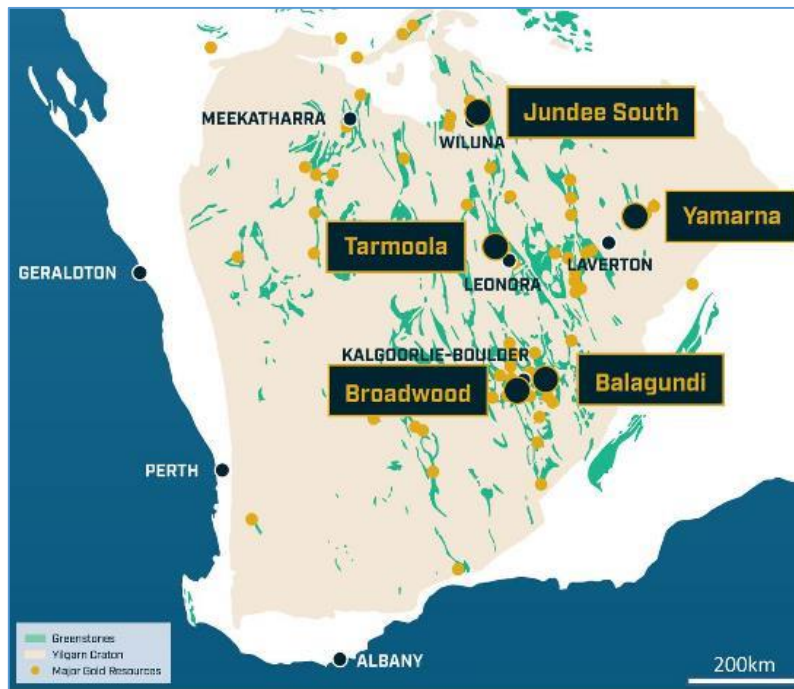


Competitive Advantage

Project Overview

Potential to host large-scale gold deposits

- **Balagundi** – located 20km east of the Kalgoorlie Super Pit, Balagundi has significant historical workings and high grade drill intersections close to existing processing facilities
- **Jundee South** – 10km along strike from the Jundee Gold Mine, the Jundee mine sequence traverses through the project
- **Tarmoola** – a large-scale regional geochemical anomaly which incorporates the operating King of the Hills and Sons of Gwalia gold deposits
- **Broadwood** – located between the Binduli mining centre and Kalgoorlie Super Pit and interpreted to host extensions to these ore controlling structures
- **Yamarna** – Immediately west of the Gold Fields – Gold Road Gruyere Joint Venture. Potential for Au and Ni-Cu



Project location map

Corporate Overview

Board of Directors

Greg Hall	Non Exec Chairman
Stefan Murphy	Managing Director
Murray Black	Non Exec Director
Melanie Leighton	Non Exec Director

Key Advisors

John Beeson	Chief Structural Geologist
Scott Halley	Chief Geochemist
Christian Easterday	Corporate and Strategic

Capital Structure

IPO Issue Price	\$0.20/share
Amount raised under the IPO ¹	\$6,144,100
Shares issued under the IPO	30,720,500
Total Shares on issue	68,394,000
<i>Escrow shares (12 and 24 months)</i>	<i>31,312,775</i>
<i>Tradeable shares</i>	<i>37,081,225</i>
Total Options on issue	38,086,750
Performance Shares on issue	2,000,000
Market capitalisation ²	\$13.6m
Estimated cash balance (18/11/16)	\$6.0m
Enterprise Value	\$7.6m

Shareholders

Exploration Capital Partners	3,571,429	5.2%
Directors	6,664,286	9.7%
Key Advisors	5,350,000	7.8%

1. Before costs
2. Based on the IPO Issue Price

Team Overview

Board of Directors

Greg Hall - Non Exec Chairman

Greg is a geologist with over 45 years' experience in the mining and exploration industry. Mr Hall was Chief Geologist for Placer Dome from 2000 to 2006 and managed Placer Dome's exploration activity in China from 1993 to 2001. Prior to Placer dome, Mr Hall managed exploration for CSR Limited contributed to the discovery of the Granny Smith gold mine in Western Australia, including Wallaby, Sunrise Dam and Keringal. Mr Hall has significant experience as a director for a number of publicly listed resources companies

Stefan Murphy - Managing Director

Stefan has 17 years' experience in the mining industry, both in industry as a geologist and more recently in financial advisory and equity capital markets. Stefan initially worked within BHP Billiton's iron ore and bauxite divisions before moving into gold and precious metals at Gold Fields Limited mining operations in Western Australia. For the past 7 years Stefan has worked in corporate advisory with PwC and most recently with RFC Ambrian in Australia and the UK, providing corporate and financial advice

Murray Black - Non Exec Director

Murray has over 39 years' experience in the mineral exploration and mining industry and has served as a director of several publicly listed Australian companies. Mr Black part-owns and manages a substantial Australian drilling company, Blue Spec Drilling, has interests in several commercial developments and has significant experience in capital financing

Melanie Leighton - Non Exec Director

Melanie is a geologist with over 17 years' experience within the mineral exploration industry. She is currently the Corporate Projects Manager and alternate director of ASX-listed company, Hot Chili Limited. Melanie has held senior geological roles with, Harmony Gold, Hill 50 Gold, Northwest Resources and Terra Gold gaining practical and management experience within the areas of exploration, mining and resource development

Key Advisors and Founding Shareholders

John Beeson - Chief Structural Geologist

Dr Beeson has over 25 years' worldwide experience in multiple-commodity mineral exploration for companies including Placer Dome, Gold Fields Limited and Pancontinental Mining. For the past 10 years, Dr Beeson has acted as a geological consultant focusing on gold, copper and nickel exploration. Dr Beeson specialises in structural geology with a PhD and post-doctoral experience from the University of Western Australia. Dr Beeson's recent work has seen his involvement in the exploration and assessment of large multi-commodity projects for some of the world's major mining companies

Scott Halley - Chief Geochemist

Dr Halley has more than 25 years' experience as an exploration geologist and has developed industry leading expertise in exploration techniques based on mapping alteration zonation patterns using spectral mineral mapping and litho-geochemistry. Dr Halley has contributed to significant gold discoveries at Henty in Tasmania and at Raleigh in the Kalgoorlie region of Western Australia. Dr Halley has concentrated on consulting to some of the world's largest mining and exploration companies and his considerable gold-focused consulting has taken his work to many of the world's premier gold provinces globally

Christian Easterday - Advisor – Corporate and Strategic

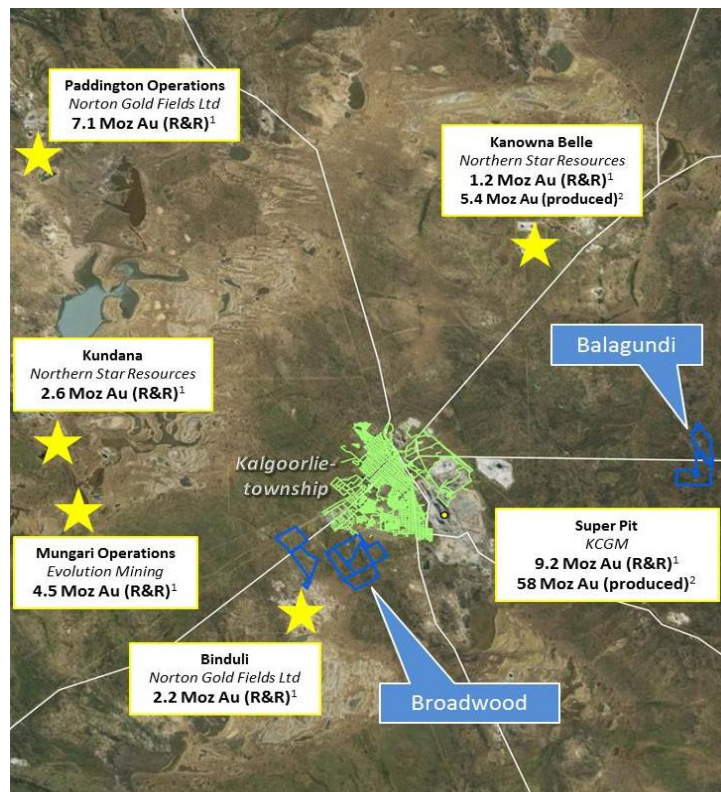
Christian is a geologist with over 19 years' experience in the mineral exploration and mining industry. He has held several senior positions and exploration management roles with gold companies including Placer Dome, Hill 50 Gold NL and Harmony Gold, specialising in structural geology, resource development and mineral economic valuation. Mr Easterday has extensive experience in project negotiations and valuations and has held the position of Managing Director of ASX-listed Hot Chili Limited since 2008, leading it through the discovery and development of the large-scale Productora copper project in Chile

Balagundi Project

Potential for a large gold system to be discovered

- Located just east of the Kalgoorlie Super Pit – privately held for over 20 years
- Significant strike extensive historical workings highlight potential for a large gold system
- Project only partially tested by drilling – significant discovery potential remains
- Mineralised vein systems extend over strike lengths of several hundred metres
- Four arsenic-gold trends are evident in soil geochemistry which highlight the main mineralised trends
- GBR has executed a JV agreement to earn a 75% interest through exploration expenditure of \$1,000,000 over 5 years

1. Refer to Proximal Mineral Deposits table on pages 21 and 22
2. Refer to Proximal Mineral Deposits table on pages 21 and 22



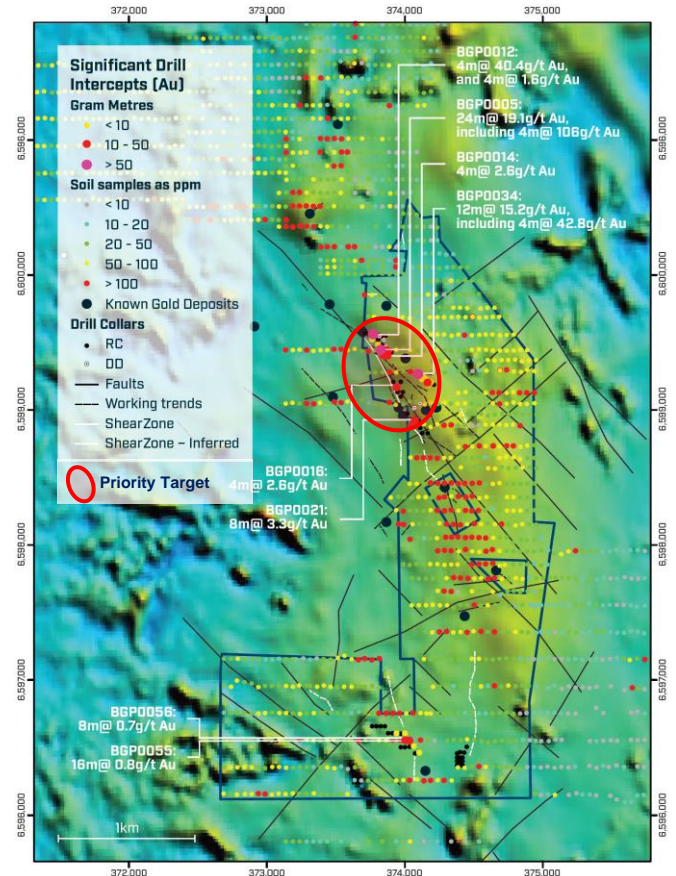
Balagundi, Broadwood projects and Kalgoorlie operations

Balagundi Project

Limited gold exploration conducted

- Large-scale structural duplex intruded by gabbroic sills (significant hosts for gold mineralisation)
- Intersecting E-W faults and NNW-trending structures localise mineralisation
- Several historic gold mines located on and around the project, including high-grade Mount Bellew underground mine
- Significant strike extensive workings evident, with historical gold production sourced from multiple high-grade, gold-bearing quartz lodes (average grade of +1oz Au)
- Significant drilling intersections include:
 - 24m grading 19.1g/t gold from surface
 - 4m grading 40.4g/t gold from 99m downhole
 - 12m grading 15.2g/t gold from 36m downhole
- 3,500m RC programme scheduled to commence in mid-November 2016 (Priority Target area)

1. See Prospectus – section 7



Balagundi soil geochemistry and drill intersections

Balagundi Project

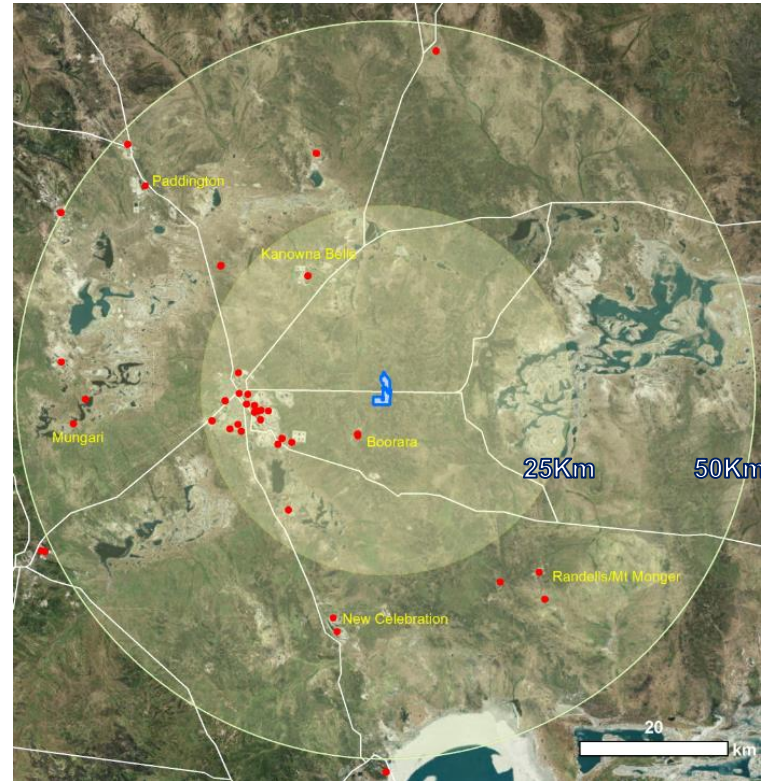
Local Infrastructure advantage

For personal use only

Balagundi is located in the heart of the Kalgoorlie mining district, only 20km from the Super Pit and many operating processing facilities:

Location	Operator	Plant
Kanowna Belle	Northern Star	1.8Mtpa CIL and roaster
New Celebration	Metals X	1.2Mtpa CIL, currently toll treating
Randalls	Silver Lake	1.2Mtpa facility
Paddington	Norton Goldfields	3.3Mtpa CIP, CY14 produced 3.7Mt
Mungari	Evolution	1.5Mtpa CIL
Boorara	McPhersons Reward	Toll treated through Greenfield's mill

Balagundi is also well serviced by road, power and water infrastructure, potentially reducing start up capital and accelerating development timeframes



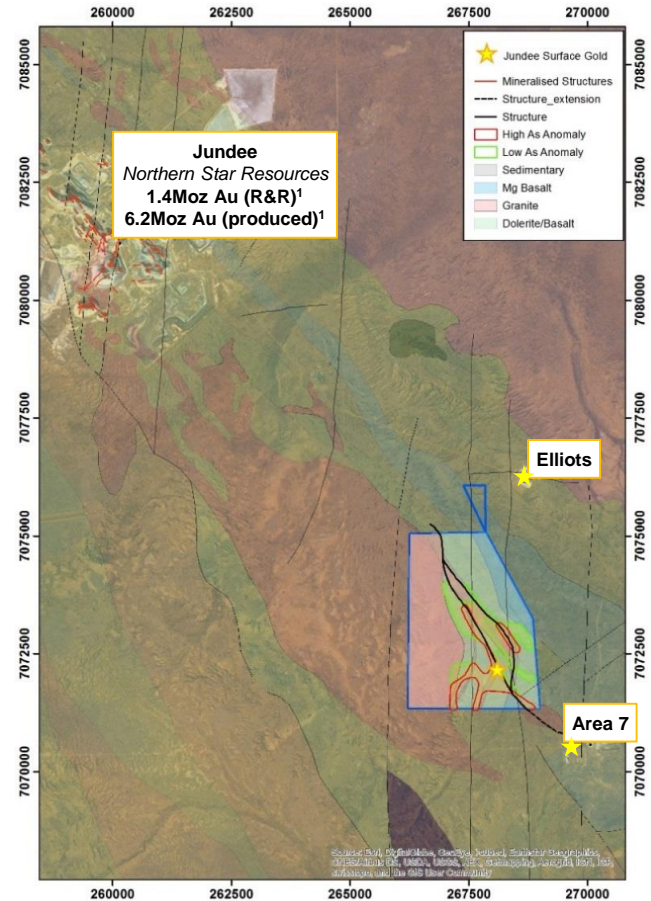
Proximal processing facilities to the Balagundi project

Jundee South Project

Compelling target of significant scale

- Located 10km along strike from the Jundee gold mine and within 2km of the Elliott and Area 7 open pits
- Jundee gold mine host stratigraphy extends through the Jundee South project
- Recent discovery of a large accumulation of gold nuggets (16.6oz) along a 200m trend in a previously untested area
- Recently completed geochemistry programme highlights a strong arsenic and pathfinder trend, with the surface gold located near the highest arsenic values
- Geochemistry drilling indicates 3km of strike potential within the interpreted Jundee mine sequence
- GBR owns a 100% interest in the Jundee South project

1. Refer to Proximal Mineral Deposits table on pages 21 and 22

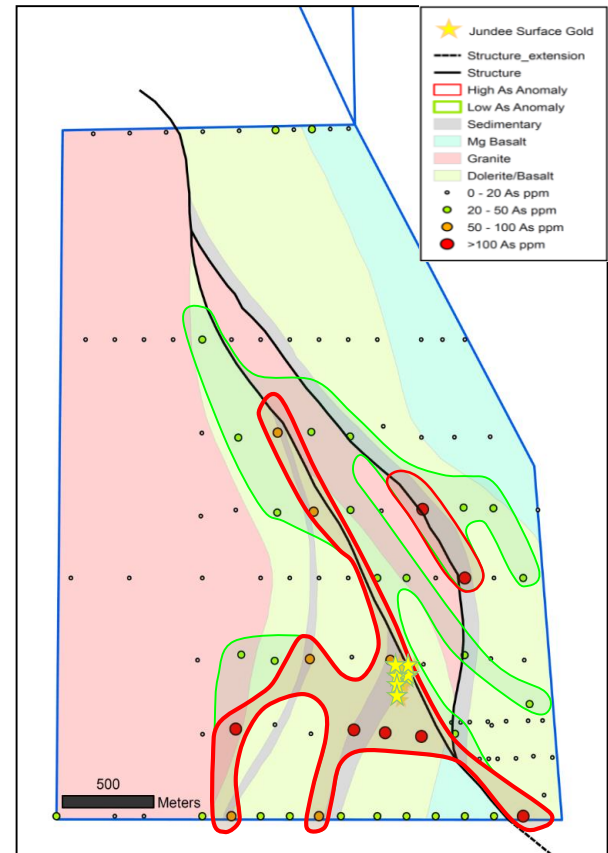


Jundee South project in relation to Jundee deposits

Jundee South Project

Priority targets identified

- Analysis of recently completed geochemical drilling indicates the Jundee greenstone mine sequence (“Jundee mine sequence”) is more extensive than previously thought, occurring over a width of 1-2km and extending the full length of the Jundee South project
- The surface gold is interpreted to coincide with the intersection of a dominant northwest structural trend and a secondary northeast trending shear zone within the Jundee mine sequence
- The structural trends are coincident with discrete arsenic-gold anomalies and pathfinder elements consistent with gold-bearing structures at the Jundee gold mine
- Geochemical analysis has also identified an interpreted parallel northwest trending zone along the contact of a granitoid intrusion and the Jundee mine sequence to the east of the main structural trend

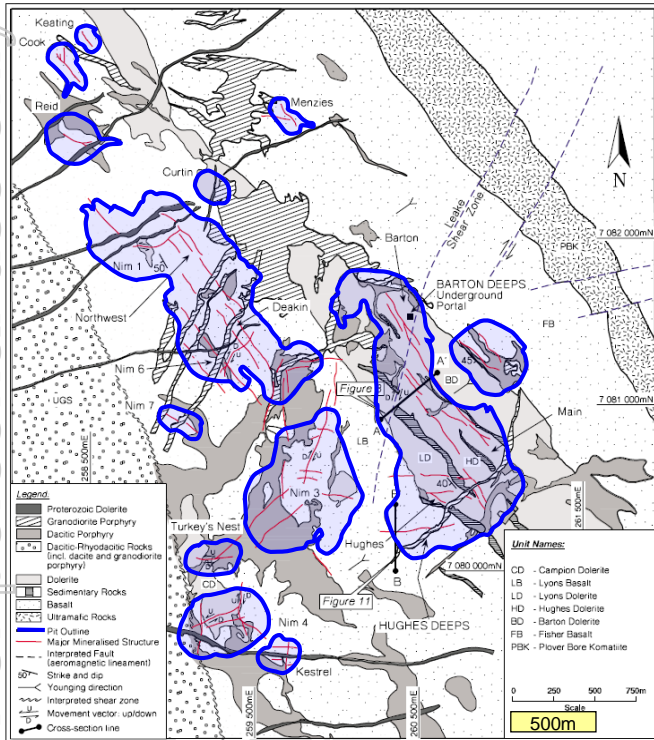


Arsenic anomaly (red=high, green=moderate) over re-interpreted geology map and location of gold nuggets

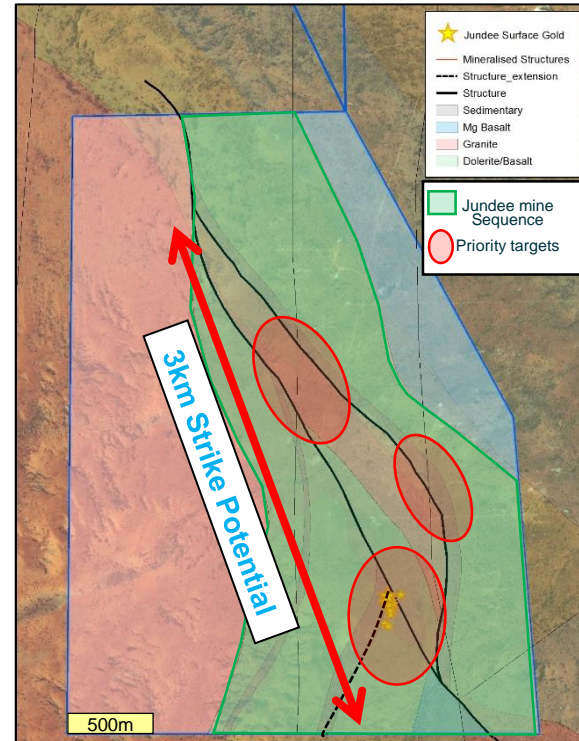
Jundee South Project

Scale Comparison - sufficient to host a large scale gold discovery

For personal use only



Geological map of the Jundee Gold Mine showing individual pits, major mineralized structures and Jundee mine sequence¹



Geological map of the Jundee South project showing interpreted structures and Jundee mine sequence (same scale as opposite figure)

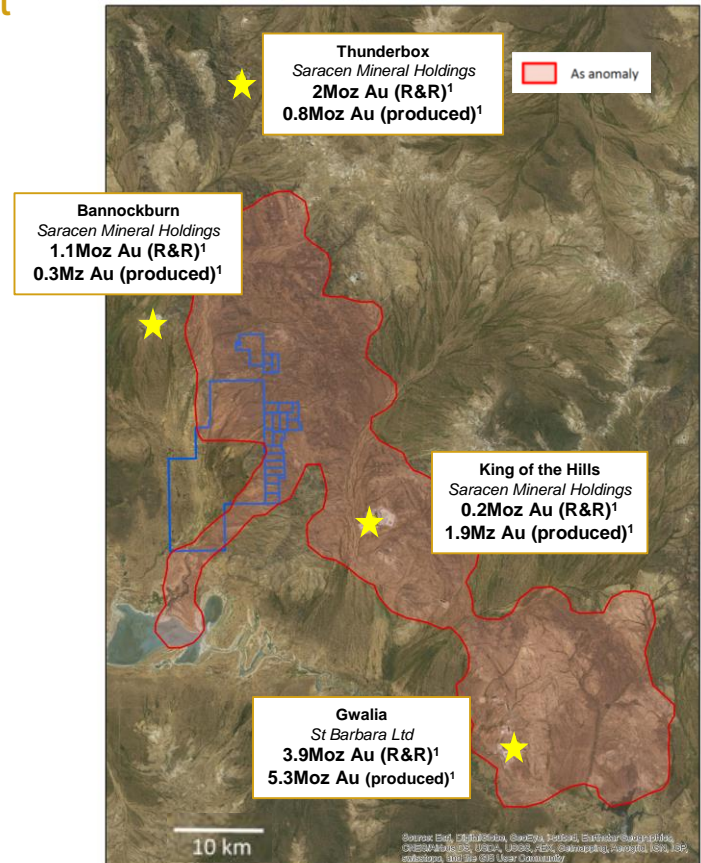
1. Archaean lode-gold mineralization at Jundee–Nimarny, north Yandal greenstone belt, Yilgarn Craton, Western Australia (Kohler et al. 2001)

Tarmoola Project

Conceptual large-scale gold project

- Located 40 kilometres NW of Leonora, just west of Saracen's King of the Hills gold mine
- Lies within the same geological setting as King of the Hills and Gwalia, containing the northern extension to a regional granite-greenstone terrain contact
- Conceptual large-scale gold project highlighted by a large regional geochemical anomaly which also incorporates King of the Hills and the Gwalia gold deposits
- Significant land position assembled – stratigraphy known to be associated with neighbouring gold mineralisation
- GBR has executed a JV agreement to earn a 75% interest through exploration expenditure of \$1,400,000 over five years

1. Refer to Proximal Mineral Deposits table on pages 21 and 22



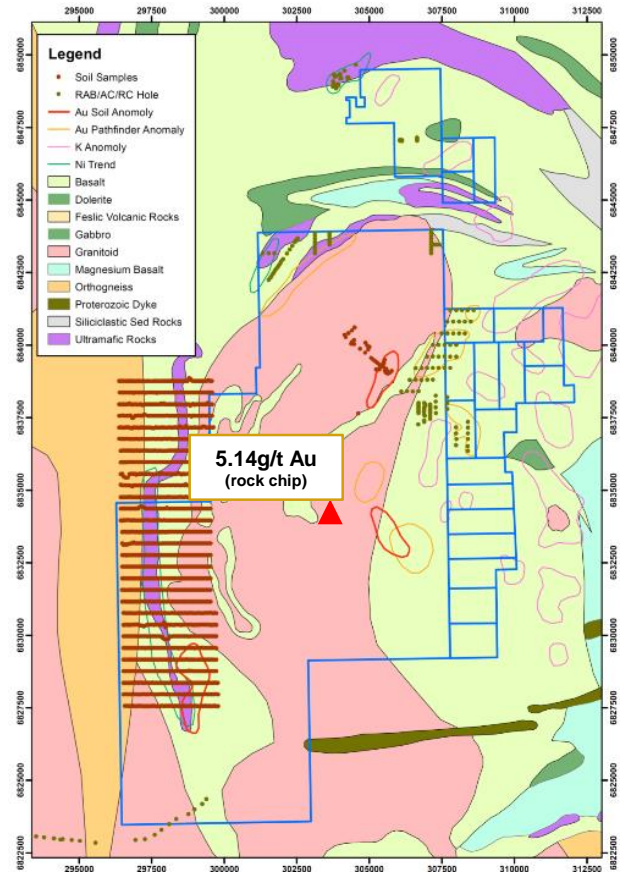
Tarmoola regional deposits with arsenic soil anomaly

Tarmoola Project

Historically overlooked

- Project comprises greenstone sequences, a km-scale internal granitoid and a number of discrete dioritic to tonalitic stocks known to be associated with gold mineralisation (e.g. King of the Hills)
- Historically overlooked – early regional geological interpretation assumed the project to be predominated by granite
- Recent field reconnaissance and desktop work shows the project to contain a large component of greenstone, with the granite-greenstone contact now interpreted to lie within the project
- Significant gold and pathfinder results returned in reconnaissance rock chip sampling (up to 5.14g/t Au)¹
- An initial 1,000 hole auger programme has commenced to assess the bedrock geochemistry and hydrothermal gold system

1. Refer to Prospectus – section 7



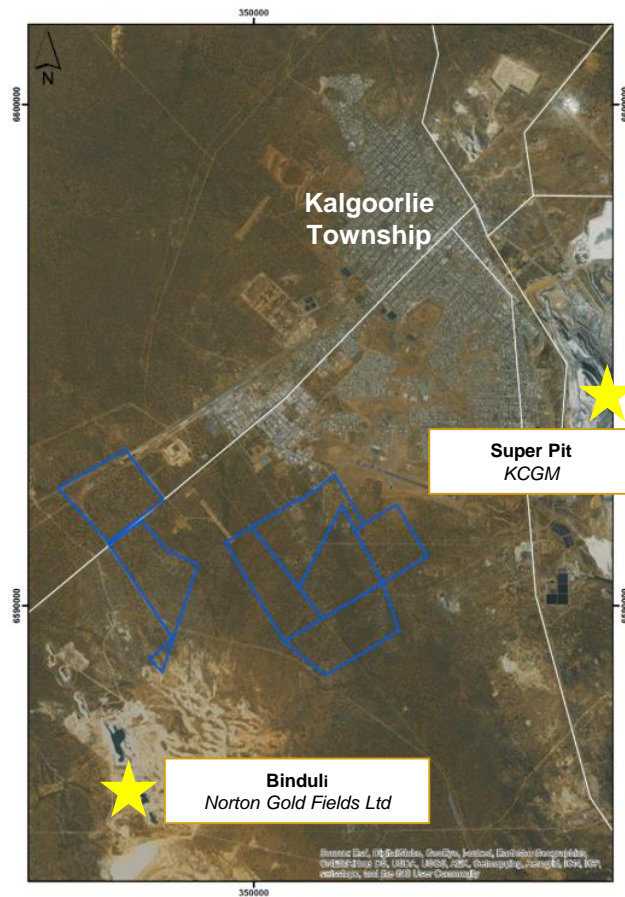
Tarmoola geology, showing soil anomalies and recent rock chip sample

Broadwood Project

Untested by modern exploration

- Located between the historical Binduli mining centre (+1.9Moz) and the Golden Mile/Kalgoorlie Super Pit (+58Moz)¹
- Several major NE trending fault sets cut across the project which are locally important ore controlling structures at both the Golden Mile and Binduli
- The area has undergone surprisingly little effective modern exploration
- GBR has executed a JV agreement to earn a 75% interest through exploration expenditure of \$500,000 over 5 years

1. Refer to Proximal Mineral Deposits table on pages 21 and 22



Broadwood location map

Broadwood Project

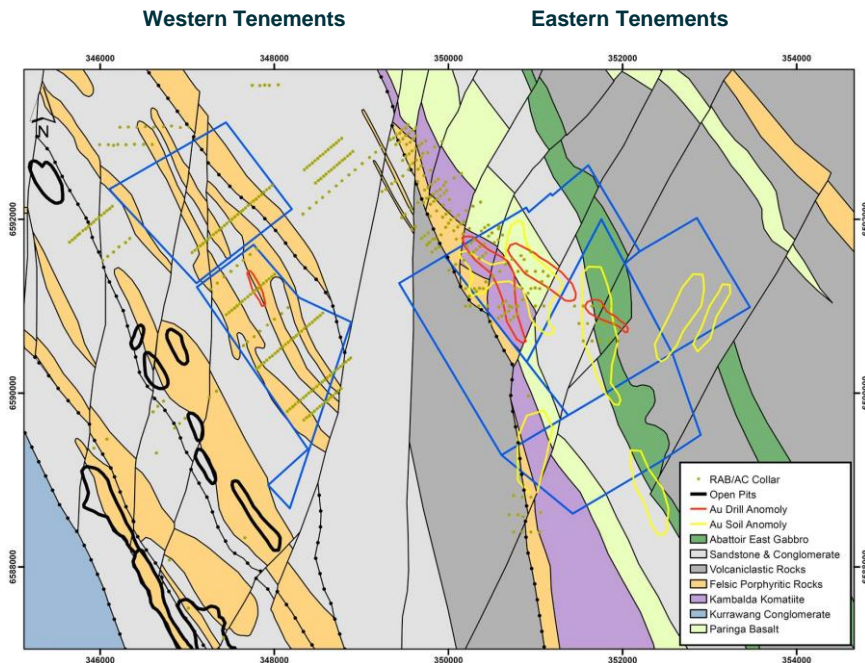
Structurally fertile location

Western Tenements

- Porphyritic intrusive rocks present – critical element for Binduli gold system
- NNE cross-cutting faults are critical mineralisation elements along the Binduli-Kundana-Kurrawang trend
- Shallow transported cover hindered historical exploration efforts

Eastern Tenements

- Major NNE trending cross-cutting faults – links to the Golden Mile
- Several moderately elevated gold anomalies defined in soil sampling and RAB drilling – yet to be effectively followed up

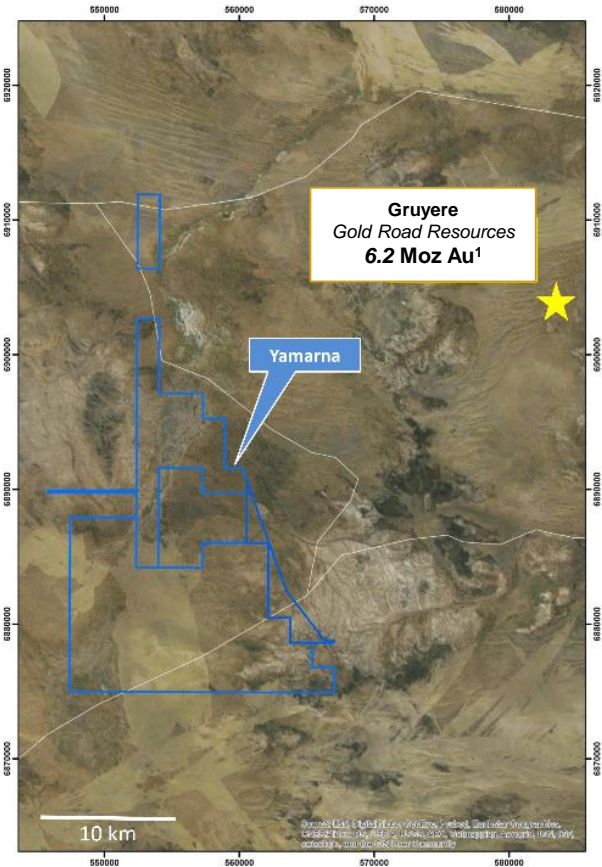


Broadwood tenements with geology and historical exploration

Yamarna Project

Potential for Au, Ni-Cu-PGE's, and uranium

- Located 130km east of Laverton, the project lies 25km southwest of the +6Moz Gruyere gold deposit
- Project contains greenstone and felsic-intermediate porphyritic lithologies known to be associated with gold mineralisation in adjacent Archaean belts
- Very limited previous exploration completed, much of which appears to have been of limited effectiveness
- Prospectivity of the region highlighted by Gold Field's recent acquisition of 50% of the Gruyere gold project² for +A\$350m
- GBR has executed a JV agreement to earn a 75% interest through exploration expenditure of \$2,000,000 over five years



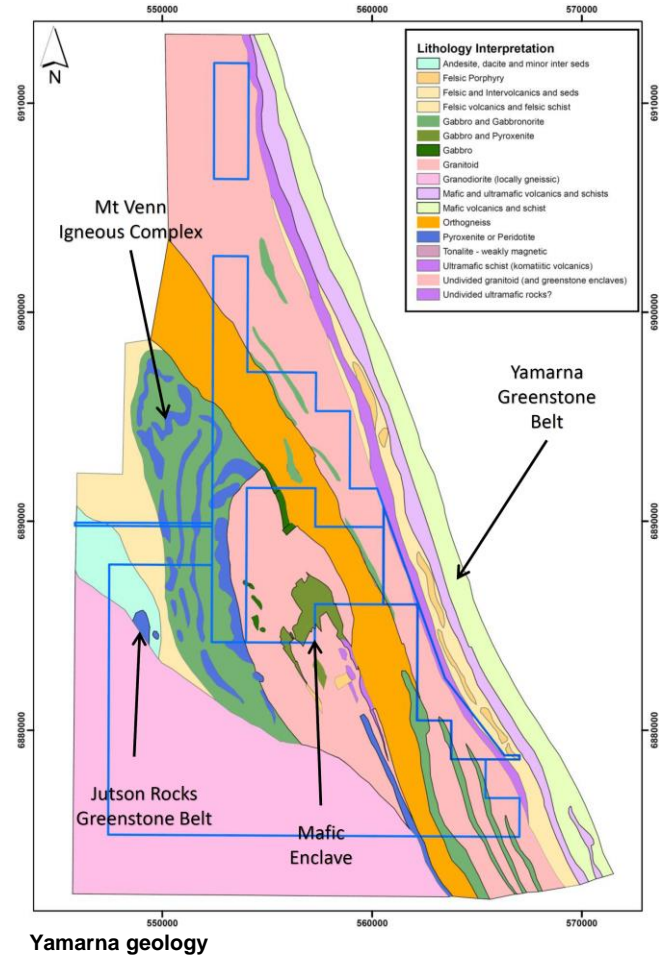
Yamarna location map

1. Refer to Proximal Mineral Deposits table on pages 21 and 22
2. Gold Road Resources Ltd ASX announcement - 7 November 2016 (<http://www.goldroad.com.au/media/58201040da162358861136.pdf>)

Yamarna Project

Major structural corridors traverse the project

- Immediately west of the Yamarna greenstone belt, hosting southern extensions of the Mt Venn igneous complex
- Major structural corridors associated with the Yamarna and Jutson Rocks greenstone belts traverse the project
- Significant gold mineralisation recognised immediately east along the Attila-Alaric and Gruyere trends
- Poorly-tested magnetic and EM conductivity anomalies believed to be extensions of the Mt Venn igneous complex
- Very limited previous exploration, likely ineffective in testing for significant bedrock Au and Ni-Cu mineralisation



Forward Catalysts

ASX Listing

- GBR listed on the ASX 18 November 2016 following a successful and oversubscribed IPO, raising A\$6.1m

Immediate Drill Testing

- A 3,500m RC drill programme to test high priority gold targets at Balagundi is scheduled to commence imminently, with results expected in early-mid December
- An RC programme has been planned at Jundee South to test targets generated from recent surface gold and geochemistry programmes. Timing is subject to various approvals being granted
- An auger programme has commenced at Tarmoola with results expected in early December. A follow-up RC programme will be planned for Q1 2017
- Approvals are being sought for a first pass auger geochemistry programme at Broadwood
- Data compilation and desktop analysis continues on Yamarna ahead of field activities later in 2017



Appendices



Proximal Mineral Deposits*

	Reported Resources			Reported Reserves			Resource & Reserves	Historical	Total Endowment
	Tonnage (Mt)	Grade (g/t Au)	Gold (Moz)	Tonnage (Mt)	Grade (g/t Au)	Gold (Moz)	Gold (Moz)	Production (Moz)	Gold (Moz)
Bannockburn	18.9	1.7	1.06	4.4	1.5	0.21	1.06	0.35	1.1
Source:	http://www.saracen.com.au/files/8214/4486/6594/151015_ASX_-_Resources_Reserves_2015_Final.pdf								
Source:	http://www.saracen.com.au/files/4114/0738/8398/140121_ASX_-_Acquisition_of_Thunderbox_Operations_Final.pdf								
Note:	Resources include Ore Reserves of 4.4Mt at 1.5g/t Au and 206koz gold								
Binduli	74.9	0.9	2.17				2.17		2.2
Source:	http://www.nortongoldfields.com.au/PDF/15-04-08%20Scheme%20Booklet.pdf								
Note:									
Gruyere	147.7	1.3	6.16						6.2
Source:	http://www.goldroad.com.au/reports/GruyereMineralResourceUpdate-April2016-FINAL.pdf								
Note:	No Ore Reserves								
Gwalia	17.3	7	3.90	6.8	8.3	1.81	3.9	5.31	9.2
Source:	http://www.stbarbara.com.au/fileadmin/user_upload/documents/Reserves_and_Resources/2016/2016.08.23_ASX_30_June_2016_Ore_Reserves_and_Mineral_Resources_Statements.pdf								
Source:	http://www.stbarbara.com.au/fileadmin/user_upload/documents/Reserves_and_Resources/30_June_2013/SBM_Short_Form_Ore_Reserve_Report_Gwalia_Mine_.pdf								
Source:	http://www.stbarbara.com.au/fileadmin/user_upload/documents/annual-reports/St_Barbara_Limited_Annual_Report_2015.pdf								
Source:	http://www.stbarbara.com.au/uploads/tx_rlsorthis/2016.08.23_ASX_FY16_Financial_Report_Appendix_4E_briefing_and_webcast_final.pdf								
Note:	St Barbara reported 4.58Moz of historical production up to 30 June 2013. From 1 July 2013 to 30 June 2016 St Barbara has reported production of 729,627oz from Gwalia								
Note:	Resources include Ore Reserves of 6.8Mt at 8.3g/t Au and 1,808koz gold								
Jundee	12.0	3.5	1.35	3.5	5.2	0.60	1.35	6.2	7.60
Source:	http://www.nsr ltd.com/our-assets/resources-and-reserves								
Source:	http://www.nsr ltd.com/wp-content/uploads/2015/06/NSR-Jundee-Operations-Fact-Sheet-July-2014-Final.pdf								
Note:	Resources include Ore Reserves of 3.5Mt at 5.2g/t Au and 595koz gold								
Kanowna Belle	9.4	4	1.21	1.8	3	0.17	1.21	5.41	6.6
Source:	http://www.nsr ltd.com/our-assets/resources-and-reserves								
Source:	http://www.nsr ltd.com/wp-content/uploads/2016/08/NSR-Kalgoorlie-Operations-Fact-Sheet-July-2016.pdf								
Source:	http://www.nsr ltd.com/wp-content/uploads/2016/07/June-Quarterly-Report-20-7-2016-final.pdf								
Note:	Historical production of 5.3Moz gold up to 31 December 2015, but this includes ore processed from Kundana and Kundana East.								
Note:	Northern Star has reported gold production from 1 January to 30 June 2016 of 47,744 oz from Kanowna Belle and 58,936 oz from Kundana East. For consistency, Kundana East production is included in Kanowna Belle figures								
Note:	Resources include Ore Reserves of 1.76Mt at 3.0g/t Au and 168koz gold								

* None of the mineral deposits and mines referred to in this table are located on tenements in which GBR has an interest

Proximal Mineral Deposits*

	Reported Resources			Reported Reserves			Resource & Reserves	Historical	Total Endowment
	Tonnage (Mt)	Grade (g/t Au)	Gold (Moz)	Tonnage (Mt)	Grade (g/t Au)	Gold (Moz)	Gold (Moz)	Production (Moz)	Gold (Moz)
King of the Hills	0.9	6.1	0.17	1.0	3	0.10	0.17		0.17
Source:	http://www.saracen.com.au/files/8214/4486/6594/151015_ASX_-_Resources_Reserves_2015_Final.pdf								
Note:	Resources include Ore Reserves of 1.0Mt at 3.0/t Au and 95koz gold								
Kundana	3.4	6	0.66				0.66		0.7
Source:	http://www.nsr ltd.com/our-assets/resources-and-reserves								
Kundana East	5.1	11.3	1.86	1.7	8.3	0.44	1.86		1.9
Source:	http://www.nsr ltd.com/our-assets/resources-and-reserves								
Source:	http://www.nsr ltd.com/wp-content/uploads/2016/08/NSR-Kalgoorlie-Operations-Fact-Sheet-July-2016.pdf								
Source:	http://www.nsr ltd.com/wp-content/uploads/2016/07/June-Quarterly-Report-20-7-2016-final.pdf								
Note:	No historical production recorded for Kundana or Kundana East as ore from both projects was processed through the Kanowna Belle plant								
Note:	Resources include Ore Reserves of 1.66Mt at 8.3g/t Au and 444koz gold								
Mungari Operations	79.33	1.78	4.53	7.9	2.62	0.67	4.53		4.5
Source:	http://evolutionmining.com.au/reservesresources								
Note:	Resources include Ore Reserves of 7.92Mt at 2.62g/t Au and 666koz gold								
Paddington Operations	151.5	1.47	7.14	18.5	1.86	1.11	7.14		7.1
Source:	http://www.nortongoldfields.com.au/Projects_Pad_Reserve_Resource.htm								
Note:	Resources include Ore Reserves of 18.5Mt at 1.86g/t Au and 1.11Moz gold								
Super Pit	30.9	0.88	0.88	201.7	1.28	8.31	9.19	58	67.2
Source:	http://www.barrick.com/files/annual-report/Barrick-Annual-Report-2015.pdf								
Source:	http://superpit.com.au/about/history/								
Note:	KCGM operates the Kalgoorlie Super Pit and stated historical production of 58Moz up to 2014								
Thunderbox	37.2	1.7	2.02	10.9	1.7	0.60	2.02	0.81	2.83
Source:	http://www.saracen.com.au/files/8214/4486/6594/151015_ASX_-_Resources_Reserves_2015_Final.pdf								
Source:	http://www.saracen.com.au/files/4114/0738/8398/140121_ASX_-_Acquisition_of_Thunderbox_Operations_Final.pdf								
Note:	Resources include Ore Reserves of 10.9Mt at 5.2g/t Au and 595koz gold								

* None of the mineral deposits and mines referred to in this table are located on tenements in which GBR has an interest

Great Boulder

RESOURCES LIMITED

greatboulder.com.au

+61 8 6323 7800

Level 1, 768 Canning Highway
Applecross, 6153
Western Australia

For personal use only

