



NSL Consolidated

19 December 2016

PHASE TWO WET PLANT – UPDATE

HIGHLIGHTS

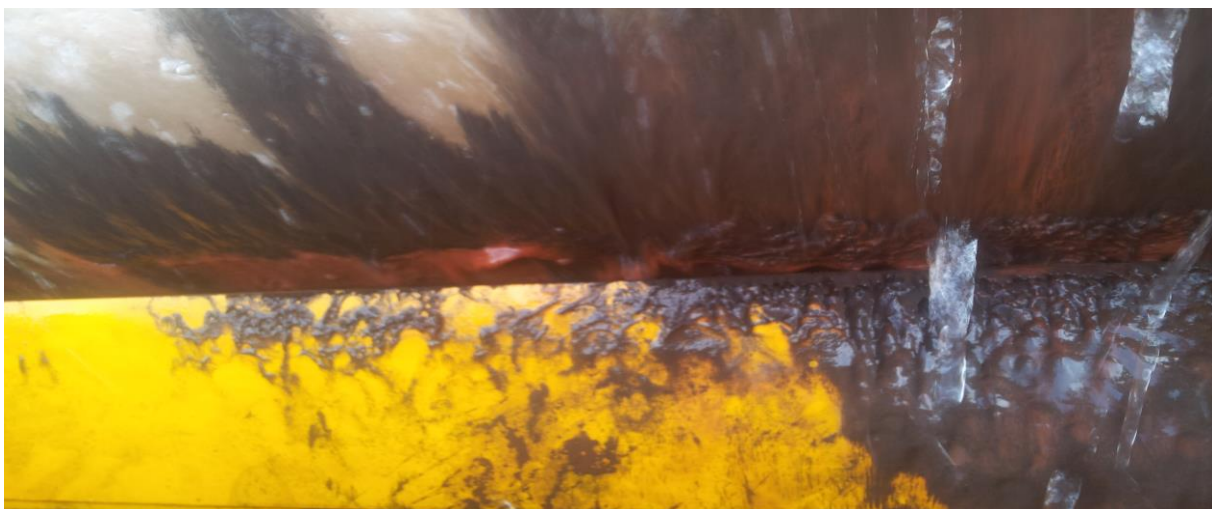
- Phase Two wet beneficiation plant wet commissioning continues.
 - Ball mill optimisation occurring with the focus on finished particle size.
 - Transition from commissioning to commencement of production ramp up expected to occur prior to Christmas.
-

NSL Consolidated Limited (Company, ASX: **NSL, NSLO**), is pleased to update the market regarding the progress of its Phase Two Wet Beneficiation Plant.

Further to previous wet plant commissioning updates, a number of key milestones have been achieved during the past two weeks:

- Ball mill run times have increased according to the commissioning schedule, with 8 hour tests to occur in the coming week;
- Classifier commissioning complete;
- Conveyor system commissioning complete;
- Low intensity magnetic separation commissioning complete;
- Material handling system commissioning complete; and
- Plant based pump systems commissioning complete.

The Company is installing the recently arrived high volume variable speed feed and recirculation pumps. The installation of these pumps will allow for the completion of the high intensity magnetic separation commissioning and the transition from commissioning to commencement of production ramp up to occur.



LIMS product

For personal use only



Ball mill and classifier



Low grade fines into ball mill

CONTACT:

Cedric Goode
NSL Consolidated
+61400 408 477