

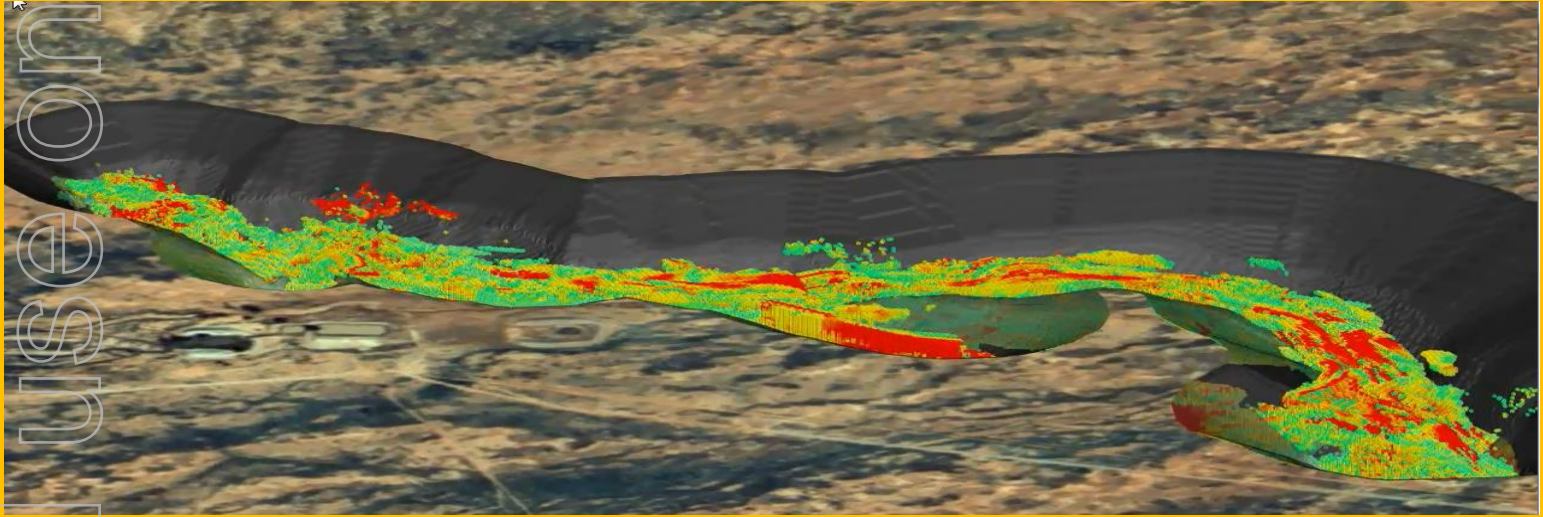


*Havilah Resources Limited plans to sequentially develop its portfolio of gold, copper, iron, cobalt, tin and other mineral resources in South Australia. Our vision is to become a new mining force, delivering value to our shareholders, partners and the community.*

175 million Ordinary Shares -- 31 million Listed Options -- 7 million Unlisted Options

ASX and Media Release: 29 May 2017

ASX Code: HAV



## MOU FOR KALKAROO STUDY SIGNED WITH CHINESE COPPER PRODUCER

### Highlights

- **MOU signed with Wanbao Mining Limited for completion of a PFS for the upgraded Kalkaroo Copper-Gold resource.**
- **Wanbao Mining Limited is a substantial, Beijing based, international copper and cobalt producer.**

### Background

Havilah Resources Limited (**Havilah**) is pleased to announce that it has signed a Memorandum of Understanding (**MOU**) with Wanbao Mining Limited (**Wanbao**) for the completion of a pre-feasibility study (**PFS**) for the Kalkaroo Copper-Gold Project in northeastern South Australia. This follows on from a six month period of due diligence conducted by Wanbao on the Kalkaroo Project and the recent announcement of an upgrade of the Kalkaroo resource. Wanbao, at its expense, has engaged RPMGlobal (**RPM**), an independent mining consulting firm, to manage and complete the PFS work that will draw on RPM's extensive combined Chinese and Australian experience and expertise.

The objective of the PFS, which is scheduled to be completed in six months, is to provide sufficient information for Wanbao to make a decision on its future participation in financing and development of the Kalkaroo Project (The



MOU is non-binding in terms of any further investment beyond the PFS at this time). Havilah has agreed to provide Wanbao with a period of exclusivity for the duration of the PFS study plus an additional two months, until approximately the end of January 2018.

**Commenting on the MOU, Havilah Managing Director, Dr Chris Giles said:** “We are delighted to have formed a co-operative relationship with Wanbao Mining, which is a well-respected and successful Beijing based off-shore copper and cobalt producer, with sizeable mining operations in Myanmar and the Democratic Republic of Congo.

“The PFS will primarily address the development implications of the recently upgraded resource for Kalkaroo and will increase the confidence in the final processing circuit and associated capital and operating costs for an expanded operation.

“This will be very much a co-operative effort with Wanbao bringing its extensive copper processing expertise to the table and Havilah contributing its resource and mine planning knowledge of the Kalkaroo deposit. RPM will coordinate the PFS and utilize its pool of highly experienced technical experts across the mining value chain to validate and add value to the study.

“It is our shared intention that at the end of the PFS Wanbao will be in possession of all required information to enable a decision on participation in the future development of the Kalkaroo Project” he said.

#### **About Wanbao Mining Limited ([www.wbmining.cn](http://www.wbmining.cn))**

Wanbao Mining Limited is a Beijing-based specialist international mining company with substantial copper mining operations in Myanmar and copper and cobalt mining and smelting operations in Democratic Republic of Congo. Currently Wanbao controls resources of more than 9 million tonnes of copper, 400,000 tonnes of cobalt and 800 tonnes of platinum. This year Wanbao is targeting 150,000 tonnes of cathode copper production from its Myanmar operations, where it has successfully developed and applied proprietary bacterial leaching technology.

#### **About RPMGlobal ([www.rpmglobal.com](http://www.rpmglobal.com) ASX: RUL)**

RPMGlobal is a global leader in the provision of advisory services to the mining industry. Its global team has over 45 years of experience in the mining industry and is the world’s largest publicly listed group of independent technical experts, including 200 specialists in 20 offices across 13 countries. RPMGlobal is well qualified to carry out the PFS work, having completed over 50 metalliferous PFS/FS studies and hundreds of compliant projects under relevant international reporting standards. Many of RPM’s team members have direct operational experience enabling them to add value via their practical advice. RPM’s Beijing office established in 2005 works for some of China’s largest state owned and private enterprises on their outbound investment and ensures effective communications with Chinese partners and equipment suppliers.

#### **About the Kalkaroo Project**

Kalkaroo is one of the largest undeveloped copper-gold projects in Australia, containing JORC Measured, Indicated and Inferred resources of 232 million tonnes of copper and gold for over 1.1 million tonnes of copper and 3.3 million ounces of gold (refer ASX announcement 29 March 2017). The project is capable of producing high quality copper-gold concentrates plus copper metal (as native copper) and gold dore. To develop the Kalkaroo project at an optimum mining and throughput rate requires a major capital investment and considerable mining and processing expertise.

#### **About Havilah Resources Limited ([www.havilah-resources.com.au](http://www.havilah-resources.com.au) ASX: HAV)**

Havilah is a debt free South Australian gold producer having recently financed and developed its first gold mine at Portia in north-eastern South Australia. It plans to follow on with three copper-gold-cobalt mining developments at



North Portia, Kalkaroo and Mutooroo, which are underpinned by a JORC resources mineral inventory of over 1.4 million tonnes of copper, 3.6 million ounces of gold, and 18,000 tonnes of cobalt.

Project*	Resource Category	Tonnes	Copper (%)	Gold (g/t)	Cobalt (%)	Contained Copper (tonnes)	Contained Gold (ounces)	Contained Cobalt (kg)
Kalkaroo <sup>1</sup>	Gold Cap Meas. Ind. Inf	21,700,000		0.74			515,000	
	CuAu Measured	74,500,000	0.56	0.42		1,139,000	2,770,000	
	CuAu Indicated	46,200,000	0.50	0.34		Added to above	Added to above	
	CuAu Inferred	111,800,000	0.44	0.35		Added to above	Added to above	
Portia <sup>4</sup>	Inferred	300,000		2.9			30,000	
North Portia <sup>3</sup>	Indicated (supergene)	2,750,000	1.0	0.65		101,000	234,500	
	Inferred (sulphide)	8,610,000	0.85	0.64		Added to above	Added to above	
Mutooroo <sup>2</sup>	Measured sulphide	4,149,000	1.23	0.18	0.14	192,000	92,700	17,540,000
	Indicated sulphide	1,697,000	1.52	0.35	0.14	Added to above	Added to above	Added to above
	Inferred sulphide	6,683,000	1.71	0.21	(est 0.14)	Added to above	Added to above	
	Measured oxide	598,000	0.56	0.08	0.04			
<b>Total all projects</b>	<b>All categories (rounded)</b>	<b>278,987,000</b>				<b>1,432,000 t</b>	<b>3,642,200 oz</b>	<b>17,540,000 kg</b>

Based on JORC resources, details released to ASX on: 1. 29 March 2017 2. 18 October 2010 3. 23 October 2010 4. 26 June 2009

#### Cautionary Statement

This announcement contains certain statements which may constitute "forward-looking statements". Such statements are only predictions and are subject to inherent risks and uncertainties which could cause actual values, performance or achievements to differ materially from those expressed, implied or projected in any forward looking statements. Investors are cautioned that forward-looking statements are not guarantees of future performance and investors are cautioned not to put undue reliance on forward-looking statements due to the inherent uncertainty therein.

#### Competent Persons Statement

The information in this announcement that relates to Exploration Targets, Exploration Results, Mineral Resources or Ore Reserves is based on data and information compiled by geologist, Dr Chris Giles, a Competent Person who is a member of The Australian Institute of Geoscientists. Dr. Giles is Managing Director of the Company and is employed by the Company on a consulting contract. Dr. Giles has sufficient experience, which is relevant to the style of mineralisation and type of deposit under consideration and to the activities being undertaken to qualify as a Competent Person as defined in the 2012 Edition of 'Australasian Code for Reporting of Exploration Results, Mineral Resources and Ore Reserves'. Dr. Giles consents to the inclusion in the announcement of the matters based on his information in the form and context in which it appears. This information was prepared and first disclosed under the JORC Code 2004. It has not been updated since to comply with the JORC Code 2012 on the basis that the information has not materially changed since it was last reported.

For further information visit [www.havilah-resources.com.au](http://www.havilah-resources.com.au)

Contact: Dr Chris Giles, Managing Director, on (08) 8338-9292 or email: [info@havilah-resources.com.au](mailto:info@havilah-resources.com.au)