

For personal use only



IPO Presentation, June 2017

One mineral system.
Multiple deposits.
A unique opportunity.

Disclaimer and Important Notice



Disclaimer

"This presentation has been prepared by Alderan Resources Limited ABN 55 165 079 201 ("Company") and contains information that is, or is based upon, information which has been released to ASX or is contained in the Company's prospectus dated 5 April 2017 (including the supplementary prospectus dated 29 May 2017)". It does not purport to contain all the information that a prospective investor may require in connection with any potential investment in the Company. You should not treat the contents of this presentation, or any information provided in connection with it, as financial advice, financial product advice or advice relating to legal, taxation or investment matters.

No representation or warranty (whether express or implied) is made by the Company or any of its officers, advisers, agents or employees as to the accuracy, completeness or reasonableness of the information, statements, opinions or matters (express or implied) arising out of, contained in or derived from this presentation or provided in connection with it, or any omission from this presentation, nor as to the attainability of any estimates, forecasts or projections set out in this presentation.

This presentation is provided expressly on the basis that you will carry out your own independent inquiries into the matters contained in the presentation and make your own independent decisions about the affairs, financial position or prospects of the Company. The Company reserves the right to update, amend or supplement the information at any time in its absolute discretion (without incurring any obligation to do so).

Neither the Company, nor its related bodies corporate, officers, their advisers, agents and employees accept any responsibility or liability to you or to any other person or entity arising out of this presentation including pursuant to the general law (whether for negligence, under statute or otherwise), or under the Australian Securities and Investments Commission Act 2001, Corporations Act 2001, Competition and Consumer Act 2010 or any corresponding provision of any Australian state or territory legislation (or the law of any similar legislation in any other jurisdiction), or similar provision under any applicable law. Any such responsibility or liability is, to the maximum extent permitted by law, expressly disclaimed and excluded.

Nothing in this material should be construed as either an offer to sell or a solicitation of an offer to buy or sell securities. It does not include all available information and should not be used in isolation as a basis to invest in the Company.

Future matters

Subject to any continuing obligations under applicable law and the ASX Listing Rules, the Company does not undertake any obligation to update or revise any information or any of the forward looking statements in this presentation or any changes in events, conditions or circumstances on which any such forward looking statement is based.

This presentation contains reference to certain intentions, expectations, future plans, strategy and prospects of the Company.

Those intentions, expectations, future plans, strategy and prospects may or may not be achieved. They are based on certain assumptions, which may not be met or on which views may differ and may be affected by known and unknown risks. In particular, there is a risk that the Company will not be able to establish a JORC compliant resource or reserve. The performance and operations of the Company may be influenced by a number of factors, many of which are outside the control of the Company. No representation or warranty, express or implied, is made by the Company, or any of its directors, officers, employees, advisers or agents that any intentions, expectations or plans will be achieved either totally or partially or that any particular rate of return will be achieved.

Given the risks and uncertainties that may cause the Company's actual future results, performance or achievements to be materially different from those expected, planned or intended, recipients should not place undue reliance on these intentions, expectations, future plans, strategy and prospects. The Company does not warrant or represent that the actual results, performance or achievements will be as expected, planned or intended.

Competent Person's Statement

The information in this presentation that relates to exploration targets, exploration results, mineral resources or ore reserves is based on information compiled by Peter Geerds, a competent person who is a member of the Australian Institute of Geoscientists (AIG). Peter Geerds is the Chief Geologist of Alderan Resources Limited. Peter Geerds has sufficient experience that is relevant to the style of mineralisation and type of deposits under consideration and to the activity being undertaken to qualify as a Competent Person as defined in the 2012 edition of the JORC Code (JORC Code). Peter Geerds consents to the inclusion of this information in the form and context in which it appears.

Overview: A unique opportunity

- ✓ **Scale** – large Cu-Mo porphyry system and associated deposits at the heart of a significant mining district
- ✓ **De-risked** – historic mining and drilling
- ✓ **Options** – at least 4 advanced exploration targets with economic potential
- ✓ **Infrastructure** – exceptional first world infrastructure on the doorstep
- ✓ **Jurisdiction** – one of the best mining jurisdictions in the USA and globally
- ✓ **Timing** – the copper recovery?
- ✓ **Tight capital structure** – Directors and Management to hold over 50% of the Company on listing
- ✓ **Strong news flow** – Launching into a 10,000m+ drill program and induced polarisation survey post listing



Board of Directors and Senior Management on Listing

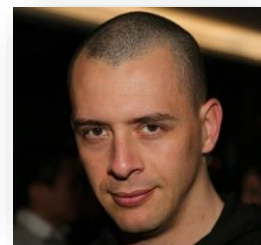


For personal use only



Nicolaus Heinen, Chairman

- Founder of Alderan Resources , Belgrave Capital Limited and Universal Copper LLC
- Investor and entrepreneur with 25 years experience in corporate finance and capital markets with Oppenheim jr. & CIE, Rhein Trust



Don Smith, Executive Director & COO

- Geologist and entrepreneur with 20 years experience in the mining industry
- Extensive experience in operational, project development, exploration and consultant roles



Christopher Wanless, Executive Director & CEO

- Founder of Alderan Resources Ltd and General Mining Corporation
- Over 10 years experience in the resources sector as a Manager, Investor and Director. Degrees in Law and Economics



Tom Eadie, Non-executive Director

- Geologist, geophysicist and founding chairman of Syrah Resources, Copper Strike, Discovery Nickel and founding Director of Royalco Resources
- Executive Manager of Exploration & Technology, Pasminco Limited



Brett Tucker, Company Secretary

- Brett is a chartered accountant and has acted as Company Secretary to a number of ASX Listed and private companies

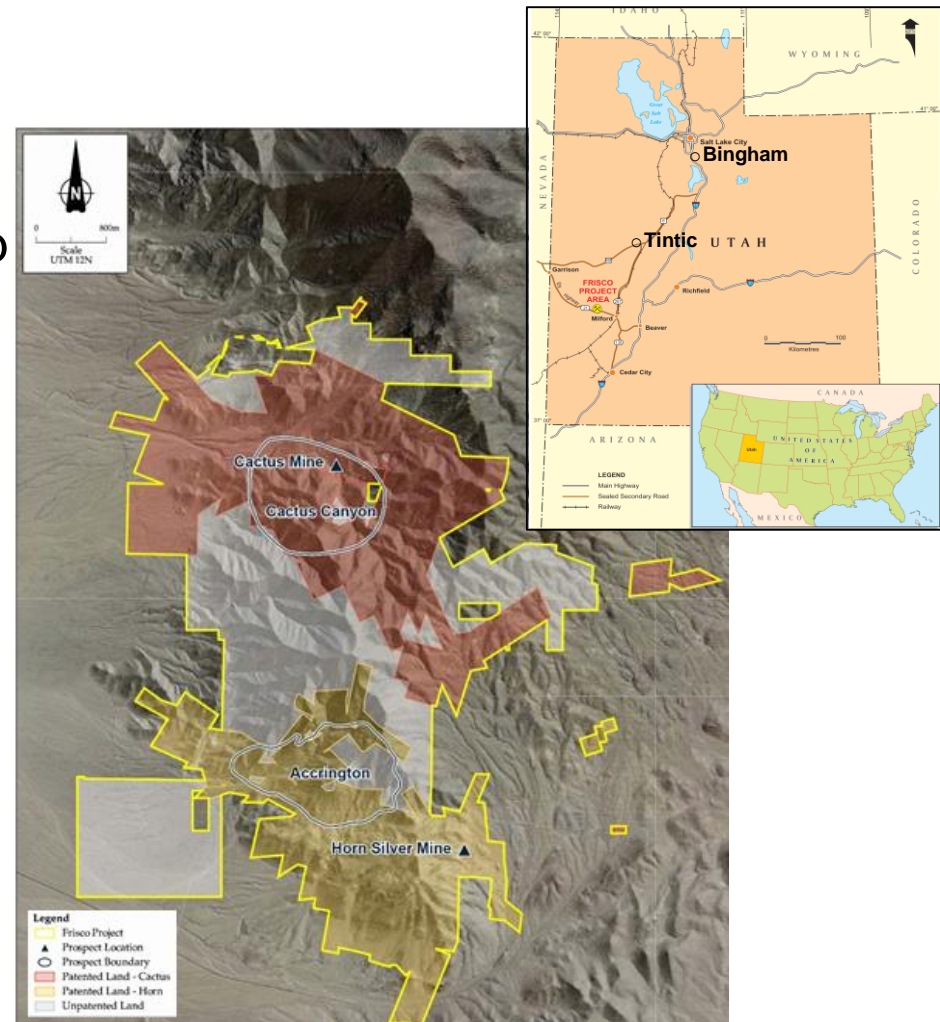


Peter Geerds, Chief Geologist

- Founder of Alderan Resources
- Geologist with global experience across green and brownfields projects including Porphyry copper-gold

An Ideal Location: endowment, jurisdiction & infrastructure

- 62% of global copper resources are found in the eastern Pacific Rim¹
- Utah is consistently one of the top 10-15 global jurisdictions for investment attractiveness²
- A State with a long mining history
- Sealed roads, rail & power plants in close vicinity
- Targets are predominantly on private (patented) land with a single landholder

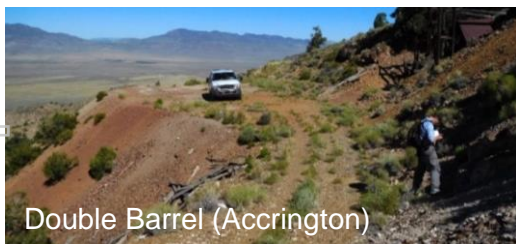


1. Source: A Global Assessment, April 2014, United States Geological Survey

2. Fraser Institute Global Survey 2015, 2016

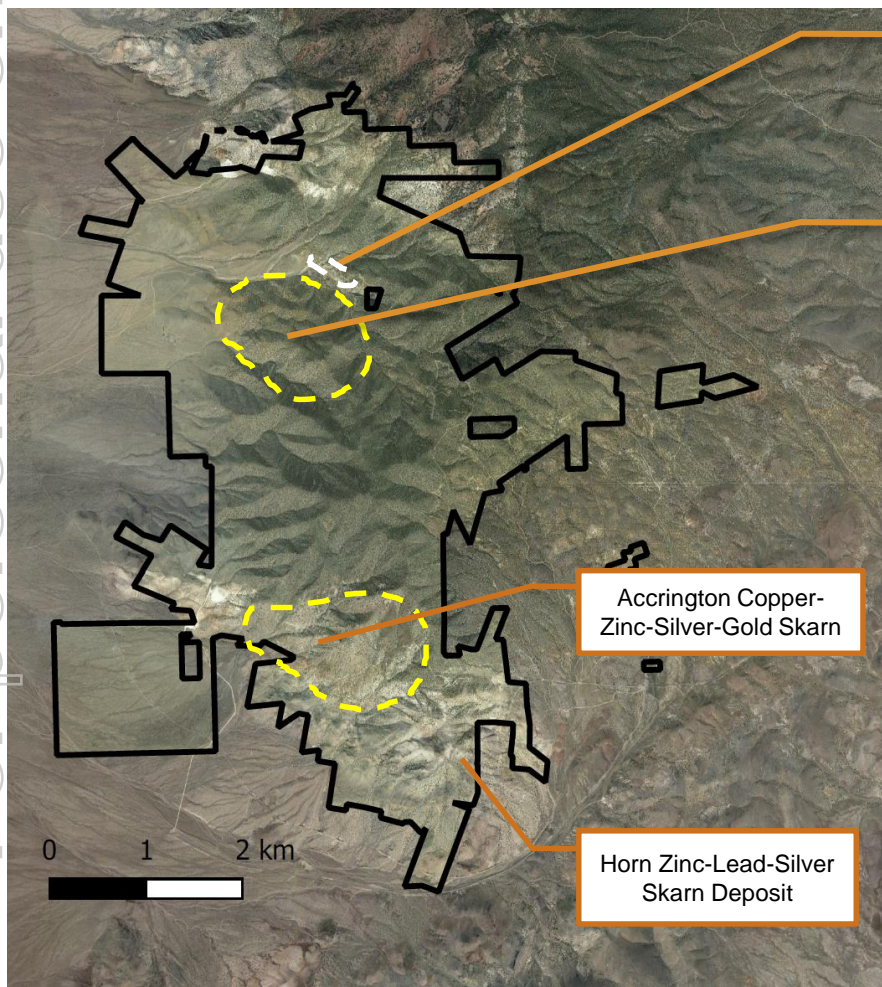
The Frisco Project – a historical mining district

- Abundant historical mines and workings
- Majority of past production from the Cactus and Horn Silver Mines
- Little exploration since the 1970's
- First Company to hold rights to explore over the whole system
- No use of modern geophysics until 2016 (Alderan)



The Frisco Project: Cactus Cu-Au-Ag breccia pipes and Cactus Canyon Cu-Mo-Au porphyry target

For personal use only



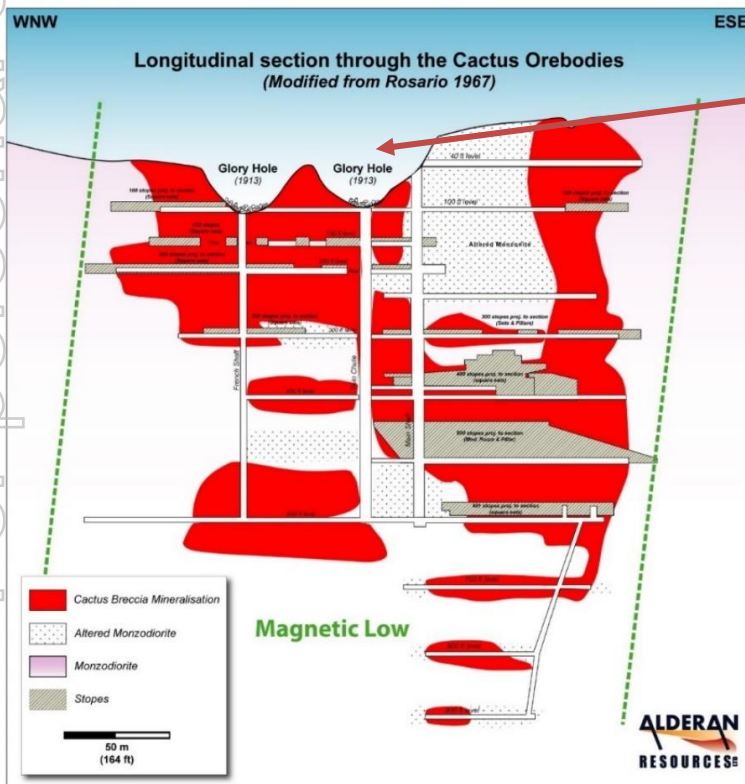
Cactus Copper-Gold-Silver Breccia Pipe Deposit(s)

Cactus Canyon Copper-Molybdenum-Gold Porphyry Prospect



Cactus Breccia Pipe – a historic Cu-Au-Ag mine

- A historical copper-gold-silver mine with production of 1.272mt at recovered grades of approximately 2.07% Cu, 0.33 g/t Au, 7.36 g/t Ag
- Mineralisation hosted in a tourmaline breccia pipe, one of three, within an area of approximately 1000m by up to 400m and individual pipes up to 300m in length
- Over 50 drill holes across the Cactus-New Year and Comet breccia pipes



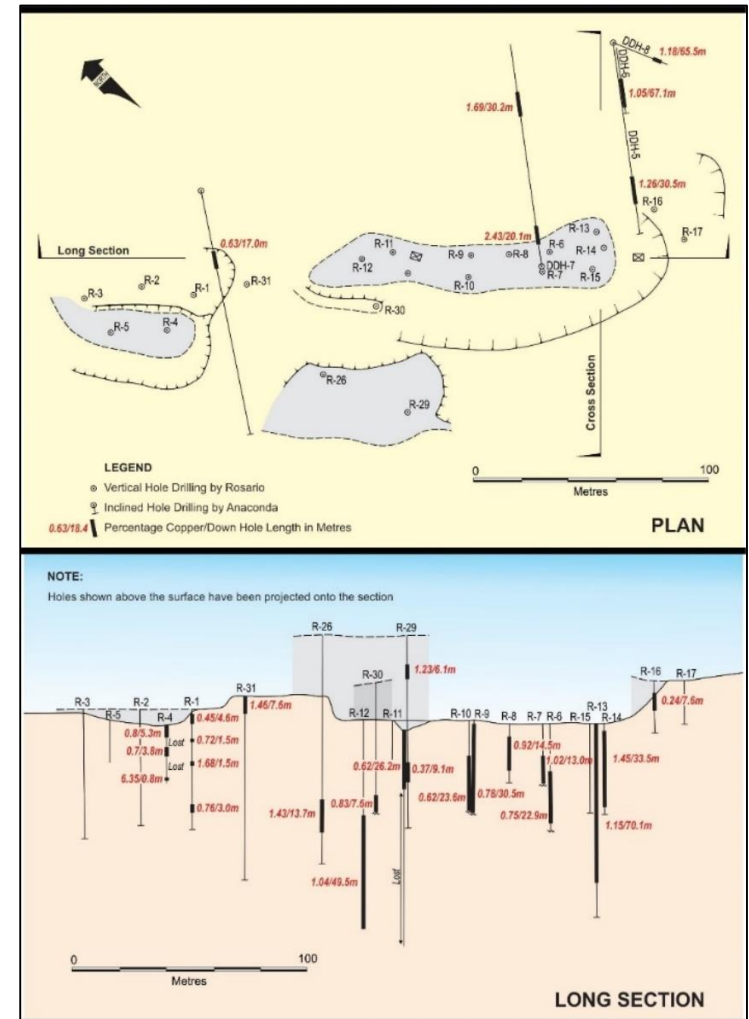
Cactus Breccia Pipe – historical drilling

For personal use only

- Increase in thickness at depth with deepest hole intersecting 130.45m @ 0.76% Cu
- Multiple mineralised pipes across 1000m by up to 400m corridor
- Limited assays for gold despite historical gold production

Hole_ID	Depth	M From	M To	Interval	Cu%
DDH4	303.6	27.4	47.6	20.1	2.4
	And	173.4	175.9	2.4	5.35
	And	183.2	203.6	20.4	1.48
DDH5	217.9	153.3	178	24.7	1.50
DDH6	357.2	172.5	179.8	7.3	2.66
	And	213.4	227.7	14.3	1.48
		230.1	239.6	9.5	1.33
DDH8A	251.5	207.9	251.5	43.6	1.69
DDH8B	281	218.2	256.6	38.4	1.40
R-12	89.2	39.6	62.5	22.9	1.84
	And	69.3	89.2	19.8	0.68
R13B	82.3	22.9	35.1	12.2	2.64
	And	42.7	68.6	25.9	1.62
R-14	38.1	1.5	24.4	22.9	2.06
UDH602	153	37.2	62.5	25.3	1.22

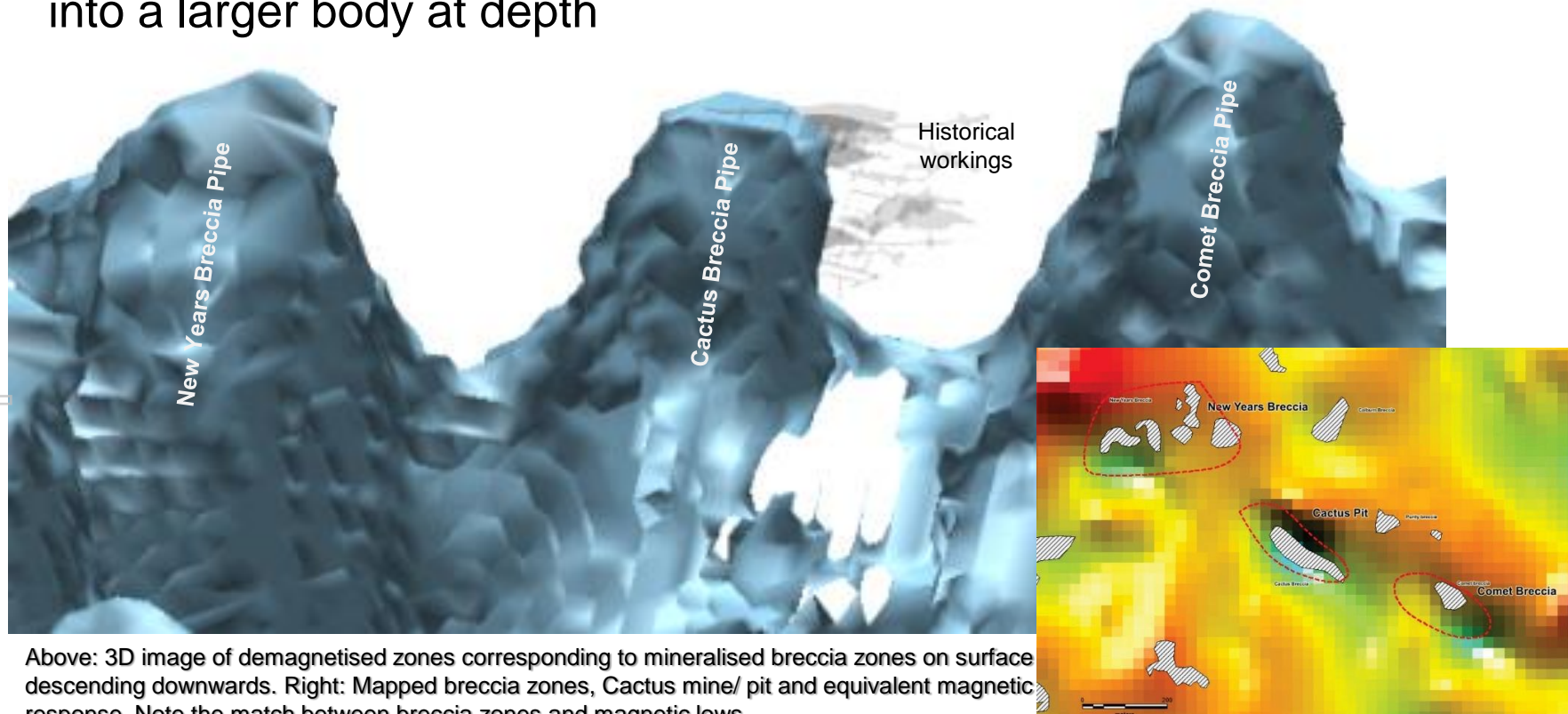
Table of significant historical drill results (0.5% cut-off)



Plan and Long Section of the Cactus Pit Area (0.5% cut-off)

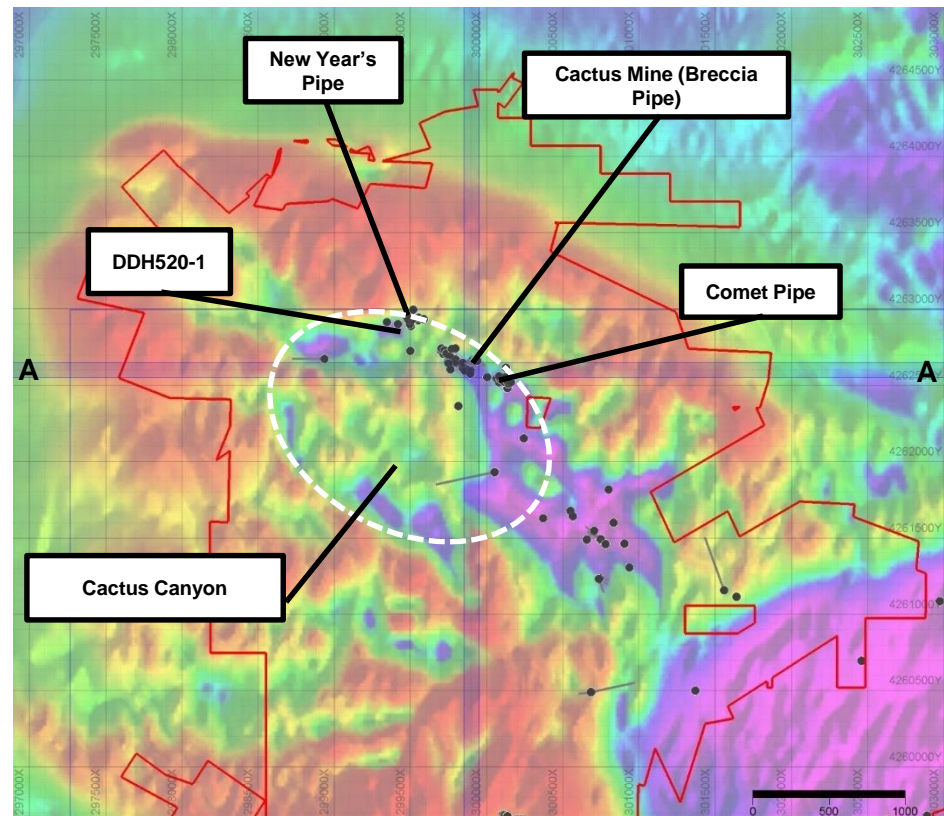
Cactus Breccia Pipe – one of several pipes along 1000m corridor

- Strong correlation between mapped breccia, magnetic lows and mineralisation encountered in drilling and historical mining
- Magnetics indicate pipes extend below known mineralisation and join into a larger body at depth



Cactus Canyon: A significant porphyry target

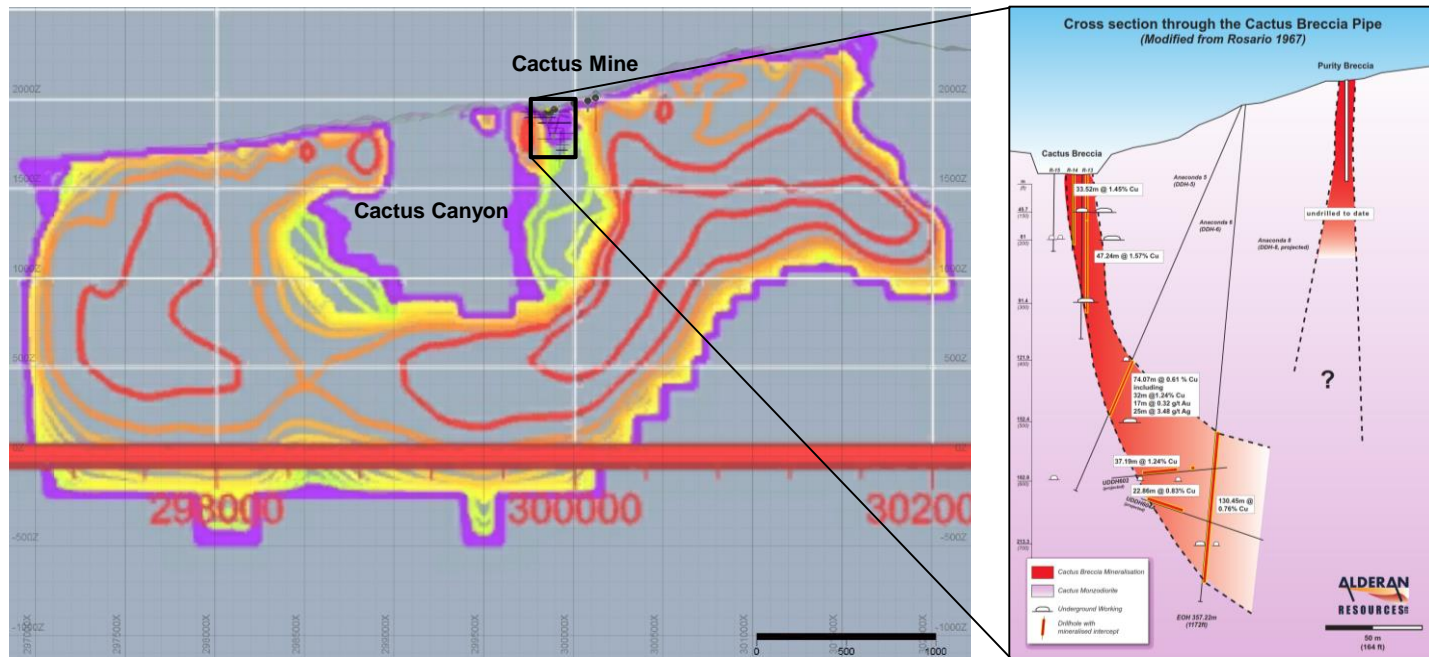
- Large circular magnetic anomaly up to 1.5k-2km in diameter
- Likely representing a large scale hydrothermal system (porphyry)
- Mineralised porphyry intersected in DDH520-1 on edge of target area (30m @ 0.22% Cu, 105 ppm Mo)
- Copper bearing breccia pipes above and adjacent to porphyry target (Cactus, Comet, New Years)
- Copper bearing dykes at surface and above Cactus Canyon
- No drill testing within central area of target



Above: magnetic image showing the location of the Cactus Canyon prospect (white circle) with respect to the breccia pipes and historical drilling. The magnetic section A-A is shown on the following slide.

Cactus Canyon: Breccia pipes as a vector to the porphyry

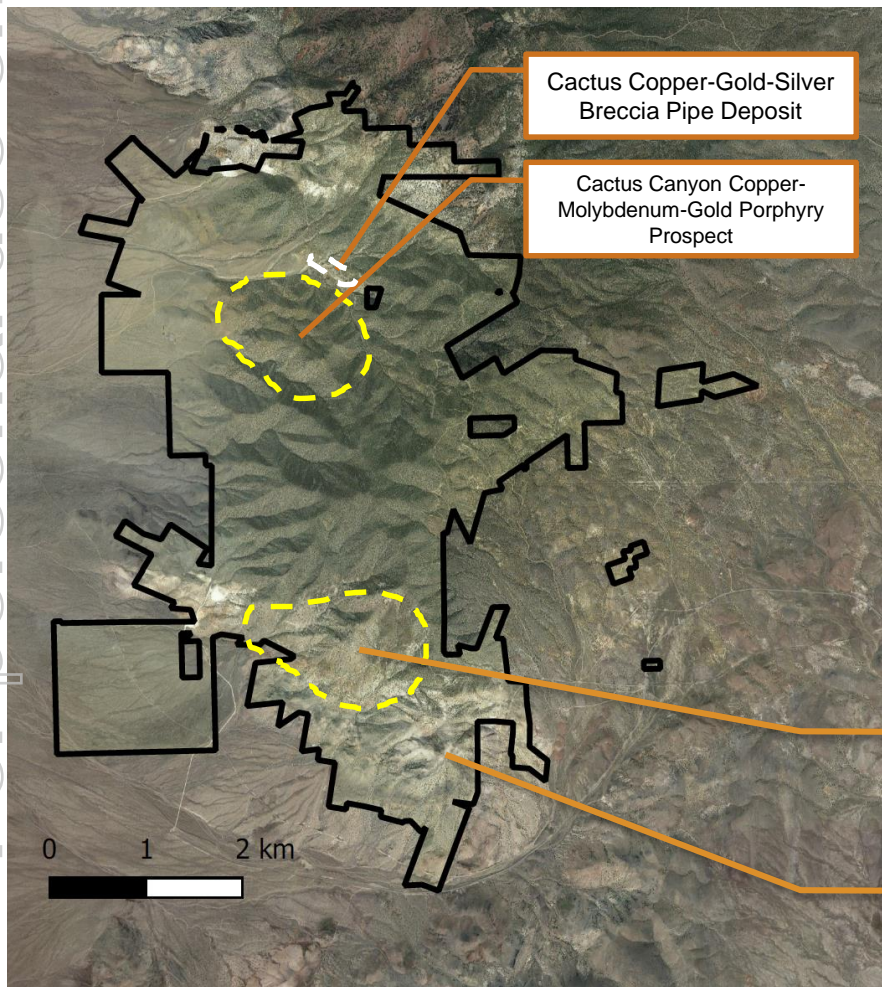
- Breccia pipes typically form contemporaneously with an underlying porphyry intrusion
- Deepest hole at the Cactus Breccia Pipe (DDH6) returned 130m @ 0.76% Cu DDH6 drilled within the margins of the porphyry target



Above: cross section (A-A shown on previous slide) image showing the location of the Cactus Mine and DDH6 which ended in mineralisation within the large magnetic low. The magnetic low is interpreted to be the result of hydrothermal alteration associated with a large underlying porphyry intrusion (Cactus Canyon prospect)

One Mineral System: Accrington Cu-Zn and Horn Zn-Pb-Ag skarn

For personal use only



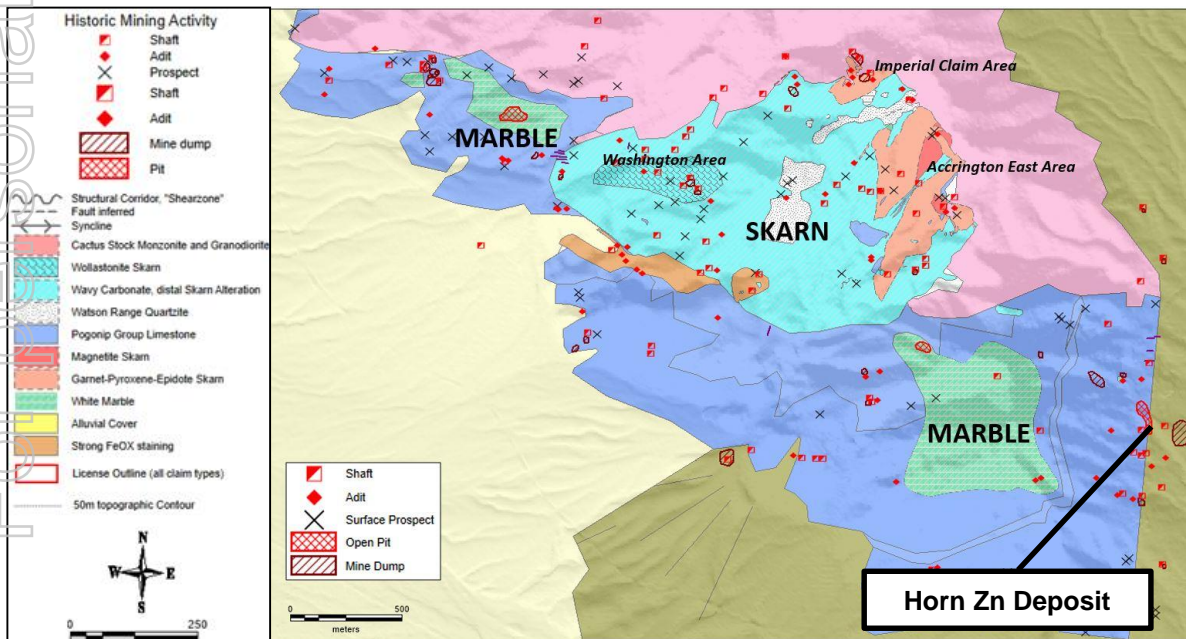
King David Shaft, Horn Silver Mine

Accrington Copper-Zinc-Silver-Gold Skarn

Horn Zinc-Lead-Silver Deposit

Accrington: mineralisation and historic workings over 4km

- Large skarn with extensive historical workings and mineralisation across the central target area of 2km by up to 1.2km
- Thick intercepts of copper in historical drilling at Imperial and wide areas of copper bearing garnet & magnetite skarn mapped at Accrington East
- Large untested target at Washington with strong Cu-Zn-Pb-Au-Ag anomalism
- High grade zinc mineralisation at the historic Horn Silver Mine



Geology map of the Accrington skarn showing historical workings and principal target areas in the Washington claim and Imperial-Accrington east claim area



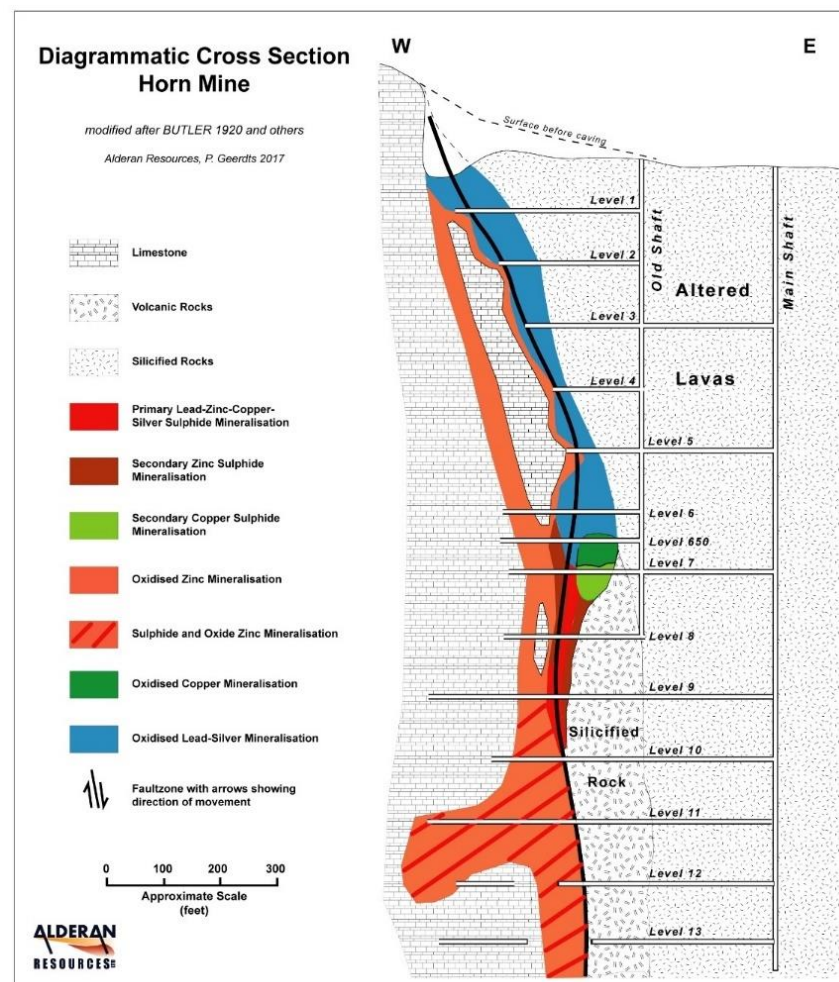
Outcropping copper-zinc bearing garnet skarn at Accrington East (above)

Horn Zn Deposit: high grade mineralisation in a historic mine

- Historical high grade lead-silver mine
- Zinc not historically mined
- Zinc recorded to lower levels of mine (350m)
- Deposit is open to depth and along strike to the north and south
- Significant historical drill and channel sample results

Hole_ID	From (m)	To (m)	Interval	Zn %
SF-2	282.8	286.5	3.6	5.86
	356.6	373.6	16.97	14
SF-3	358.93	362.41	3.48	18.01
	374.45	389.53	15.1	16.93

Table of significant historical Franconia drilling results at the Horn Mine





Data Driven

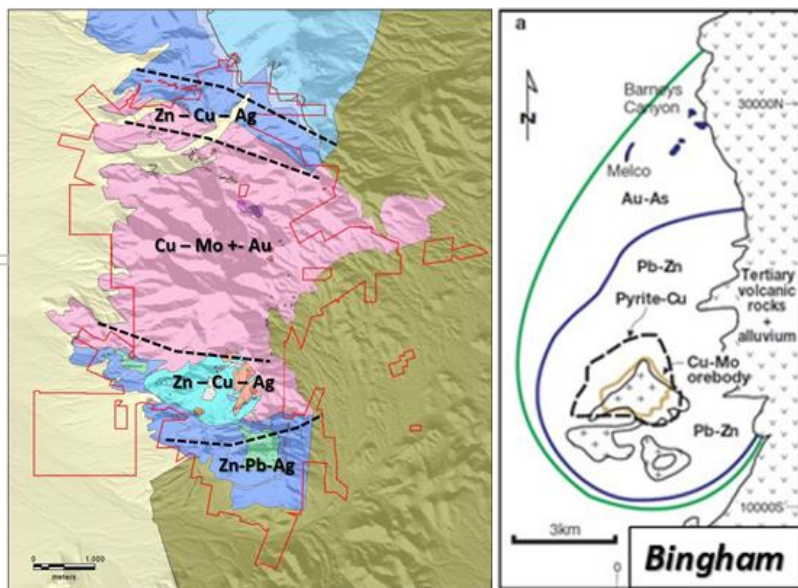
One mineral system with multiple deposits and targets

For internal use only

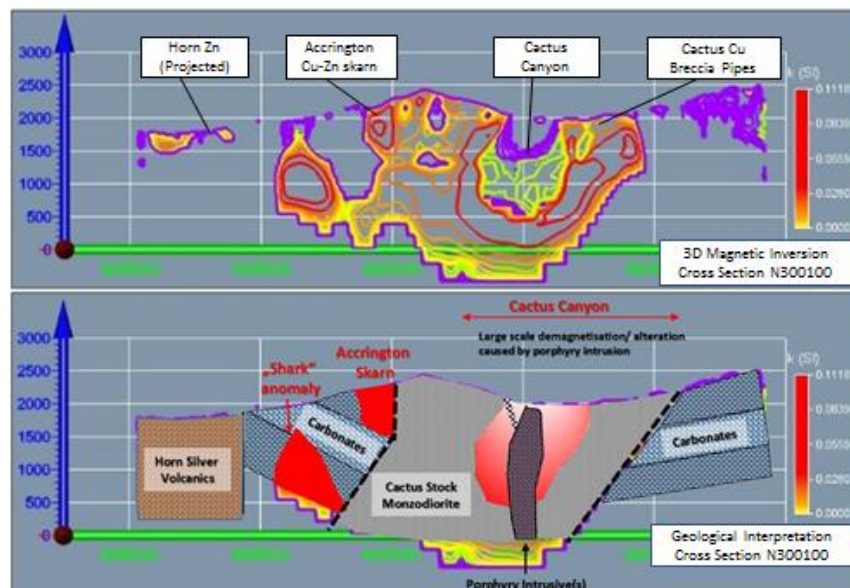


Frisco Project – a single large, connected, mineral system

- Breccia pipes and skarns are genetically related to an underlying porphyry system at Cactus Canyon
- Distinct metal zonation at Frisco is similar to typical porphyry systems (Sillitoe, 2008)
- Large alteration and sulphide footprints at Cactus Canyon and Accrington are indicative of the size of the Frisco system
- Large systems can host significant economic deposits within adjoining skarns, breccias and the porphyry (e.g. Cananea, Bingham, Antamina, Los Bronces)



Geochemical and mineralisation zonation across the Frisco project (left) and Bingham Canyon porphyry/skarn/manto/gold system (right) – not to scale. Source: Sillitoe 2008



Lower images: Cross section along N300100 showing results of magnetic inversion (red colors: high magnetic response. Green and yellow colors: low magnetic response) and geologic interpretation



Data Driven

For personal use only

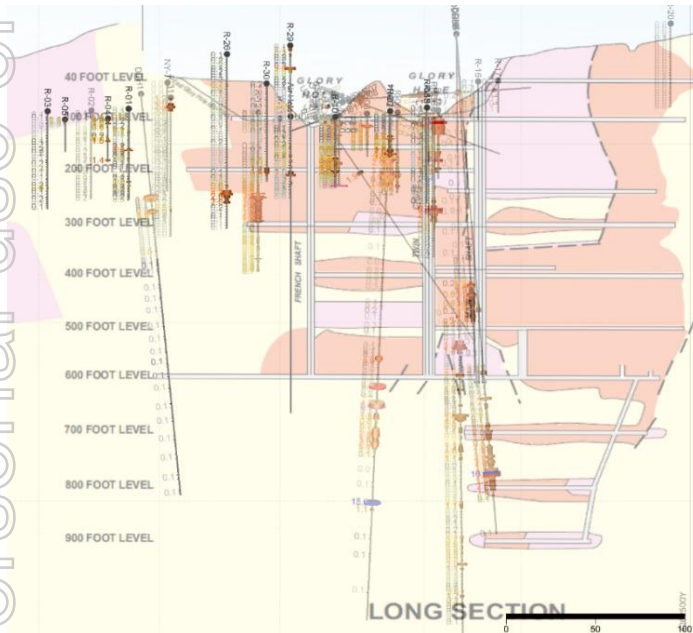


**Proposed Work
Program:
high impact,
strong news flow**

Work Program: Drilling



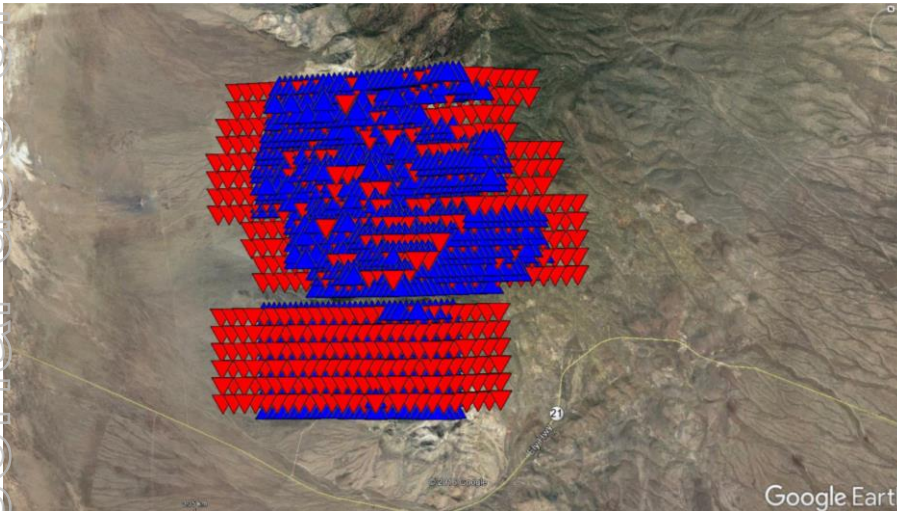
- Initial drilling to confirm historical results, establish resources and extend known mineralisation with a focus on the Cactus Breccia Pipes and Accrington
- Deeper drilling at Cactus Pipes to test porphyry Cu-Mo potential
- IP and EM survey to guide drilling



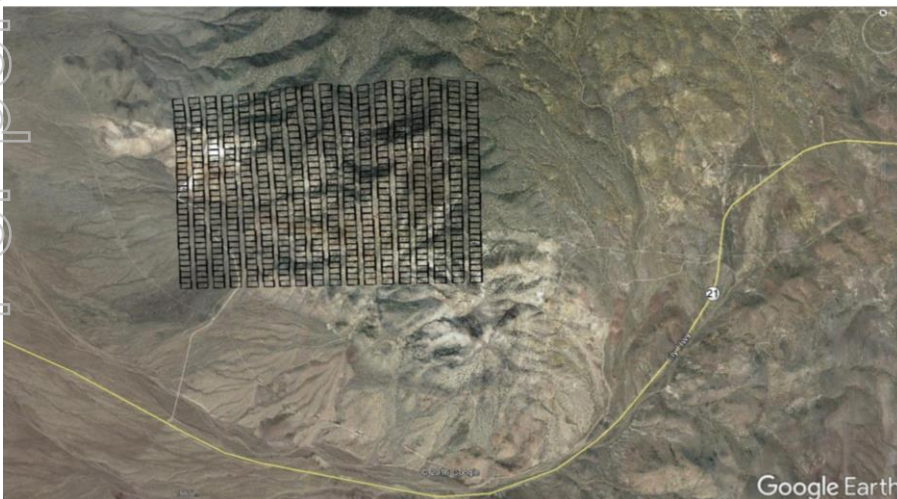
	Cactus (Cu-Au-Ag)	Cactus Canyon	Accrington (Cu-Zn)	Horn (Zn-Pb-Ag)
Planned Drilling (Meters)	5,500	1,500	4,500	3,000
Objectives	<ul style="list-style-type: none"> • Initial resource statement • Testing depth and strike potential of Cactus, Comet and New Year 	<ul style="list-style-type: none"> • Significant porphyry Cu-Mo-Au discovery 	<ul style="list-style-type: none"> • Bulk tonnage, near surface/open pittable Cu-Zn discovery 	<ul style="list-style-type: none"> • Initial resource statement

For personal use only

Work Program: IP and EM survey



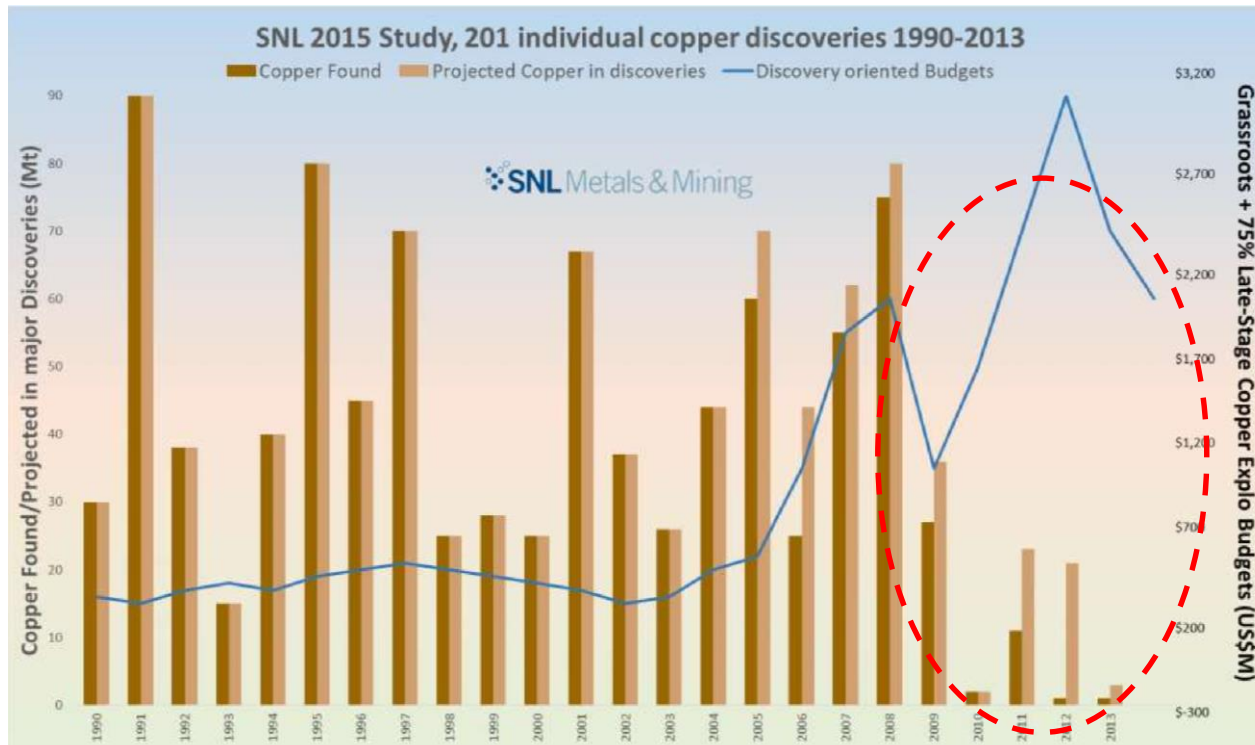
- First IP since the 1970's
- First time IP over the whole system
- EM over entire Accrington skarn
- Historical EM and IP lines over limited areas identified strong IP and EM anomalies



Top: proposed IP survey, blue triangles are receiver electrode locations, red triangles are current injection locations. Bottom: proposed coverage for in-loop EM surveying

The disappearing copper pipeline: a global scarcity of good copper deposits and projects

- Few new significant copper discoveries
- Major undeveloped deposits are deep, low grade, in high risk jurisdictions or isolated from infrastructure
- Major copper discoveries in developed countries are extremely rare



Data Source: S&P Global Market Intelligence

Capital Structure after IPO

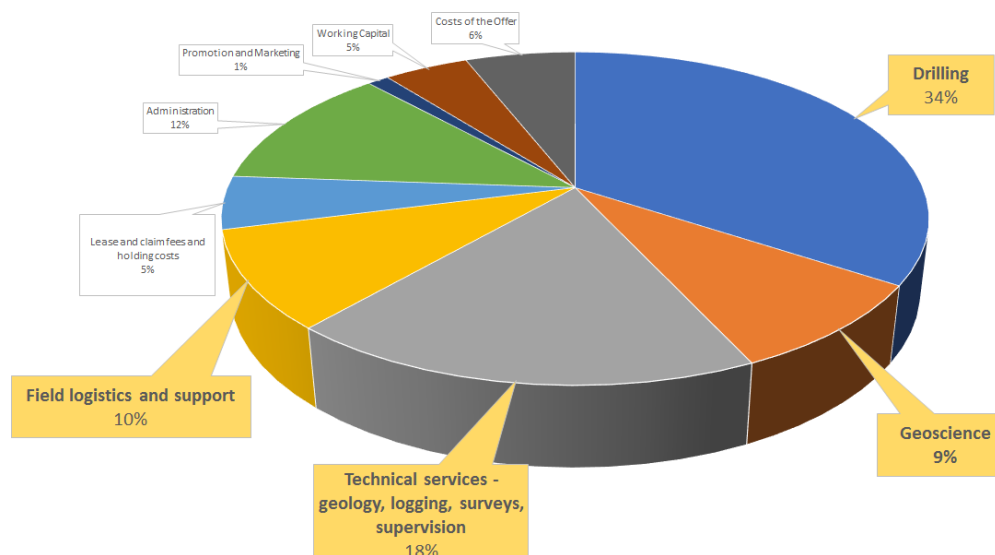


Data Driven

For personal use only

IPO Summary	Max: \$8.5m
Price Per Share	\$0.20
Shares Offered	42,500,000
Amount raised (before costs)	\$8,500,000
Total Shares on issue on completion of the IPO	107,963,908
Market capitalisation on Listing (at \$0.20)	\$21.6 million
Total options on issue at IPO	18,757,454

Significant Shareholders (% held on listing)	
Nicolaus Heinen	31,501,583 (29%)
Kitara Investments Pty Ltd <Kumova Family A/C>	12,778,333 (13%)
Christopher Wanless	10,494,584 (9.7%)
Peter Geerds	5,000,000 (4.6%)



Contact Details



Data Driven

For personal use only



WWW.ALDERANRESOURCES.COM.AU

Christopher Wanless – CEO

+61 (8) 9482 0560

info@alderanresources.com.au

Appendix: Cactus Breccia Pipe – Rock Types



Cactus Mine (Glory Hole) looking south



Chalcopyrite



Massive Chalcopyrite



Tourmaline breccia



Quartz Tourmaline Pyrite Chalcopyrite
breccia ore

For personal use only

Appendix: Cactus Breccia Pipe & Cactus Canyon – Intrusive rocks



Chalcopyrite vein fill (DDH520-1)



Grey porphyry (right) with porphyry induced sulphide veining



Chalcopyrite-Pyrite-Quartz veining within semi-porphyrific, silicified intrusive (from Cactus mine dump)



Four individual, variably mineralised porphyry intrusives in drillcore (520-1, 2, 3 and 4)



Disseminated chalcopyrite (DDH520-1)



Chalcopyrite vein within monzonite

For personal use only

Appendix: Accrington Skarn



Accrington East skarn looking to the SW



Accrington East skarn – looking to the NW



Chalcopyrite-Garnet Skarn



Copper-diopside-garnet Skarn



Garnet Skarn



Copper-zinc ore (Washington mine)



Copper bearing porphyry dyke (Washington)