



ASX 24 NSW Wheat

Price Charts

January Contract: 2004 to 2014

21 December 2011

Disclaimer



This material contains information only. The information is for education purposes only and any advice should be sought from a professional adviser. If you are seeking advice (including a recommendation or opinion) about a financial product you should consult an Australian Financial Services Licensee.

To the extent permitted by law, no responsibility for any loss arising in any way (including by way of negligence) suffered by anyone acting or refraining from acting as a result of this material is accepted by ASX. This disclaimer extends to any private discussions or correspondence with the presenter of this information.

© 2011 ASX Limited ABN 98 008 624 691



About ASX



The ASX Group of companies, includes the combined operations of ASX (formerly the Australian Stock Exchange) and ASX 24 (formerly SFE Corporation).

ASX Group activities span primary and secondary market services and include the:

- **Australian Securities Exchange**, which facilitates capital formation, hedging, trading and price discovery
- **ASX Clearing Corporation**, which manages central counterparty risk transfer
- **ASX Settlement Corporation**, which provides securities settlement for both the equities and fixed income markets, and
- **ASX Compliance**, which is a wholly owned subsidiary of ASX and performs the market oversight obligations necessary for a market, clearing and settlement facility operator. Effective 1 August 2010, the supervision of trading on ASX and the supervision of trading participants has been transferred from ASX to ASIC.

ASX Grain Futures and Options trade on the ASX 24 platform (ASX Trade24) in accordance with the ASX 24 Operating Rules and ASX Clear (Futures) Operating Rules.



ASX NSW Wheat Existing January Contracts



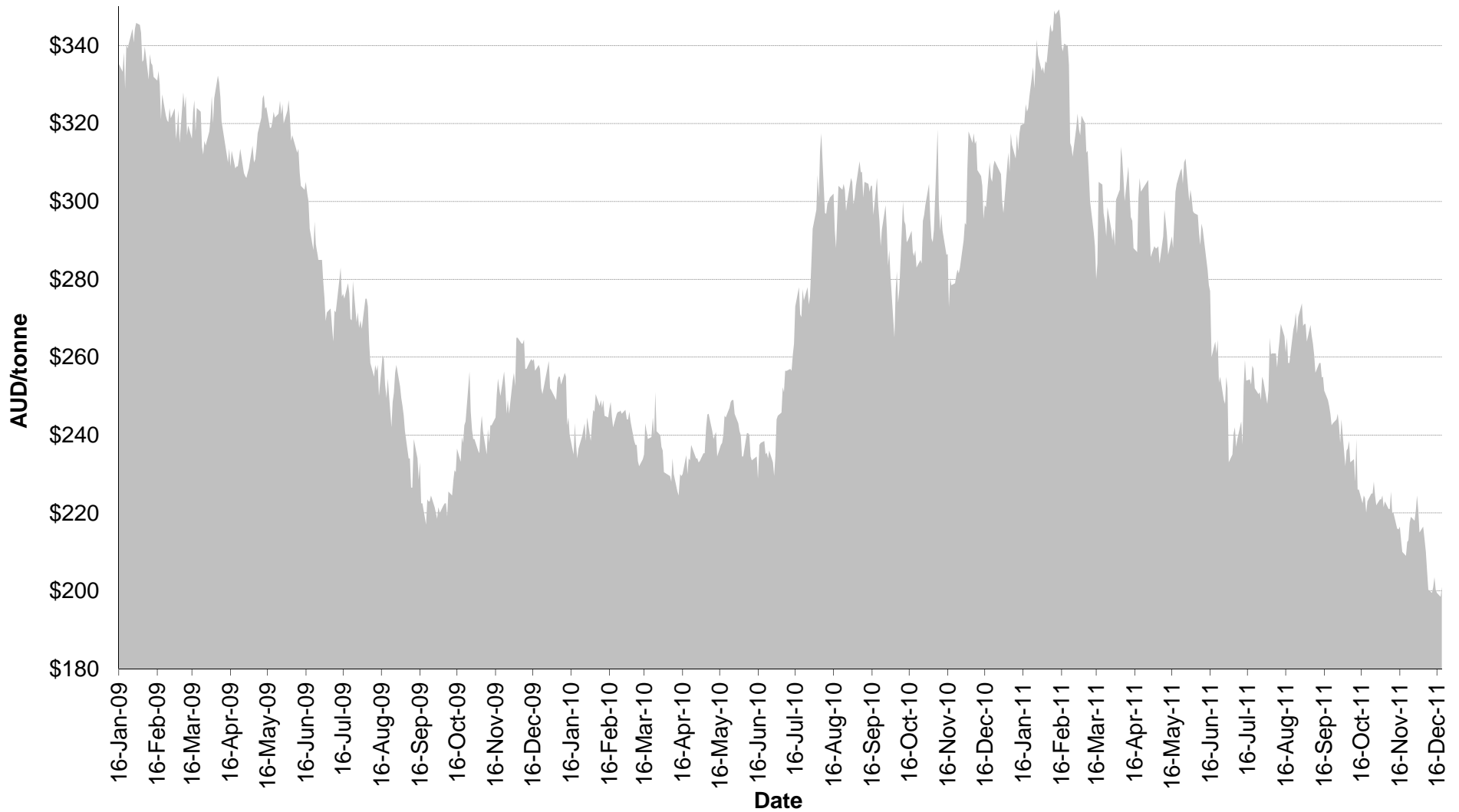
January 2012

January 2013

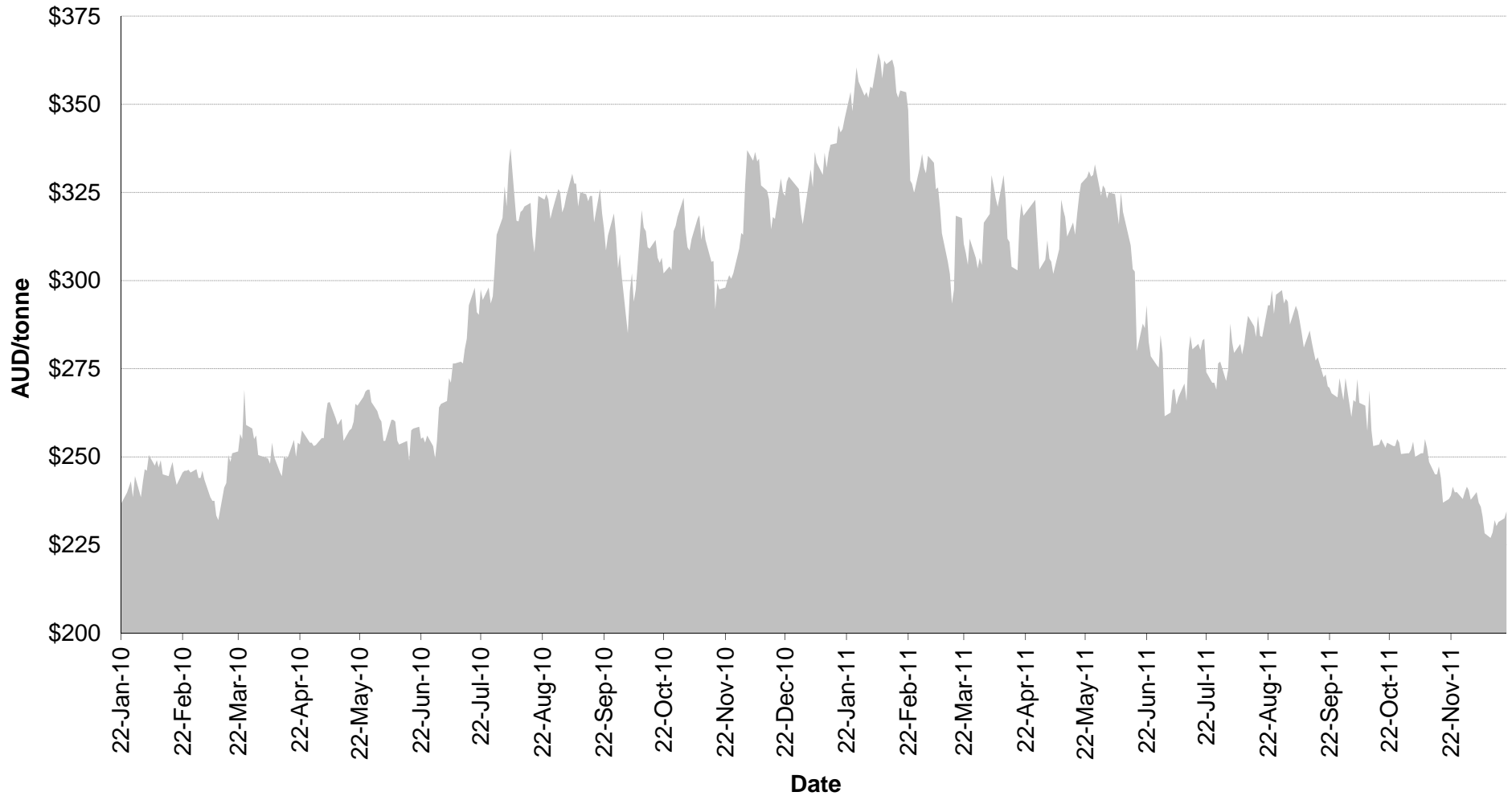
January 2014



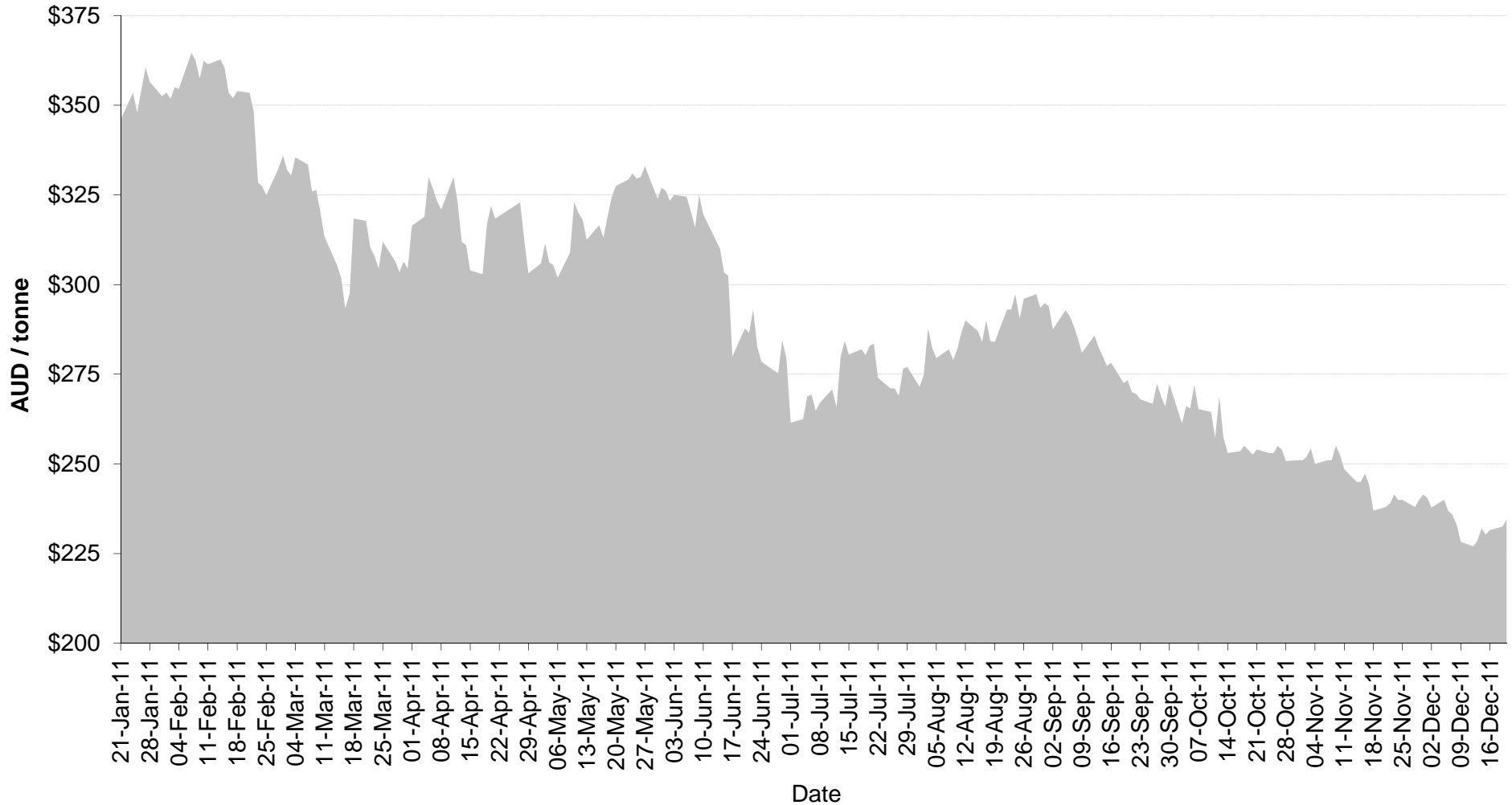
ASX NSW Wheat January 2012 Contract



ASX NSW Wheat January 2013 Contract



ASX NSW Wheat January 2014 Contract



ASX NSW Wheat Past January Contracts



January 2011

January 2010

January 2009

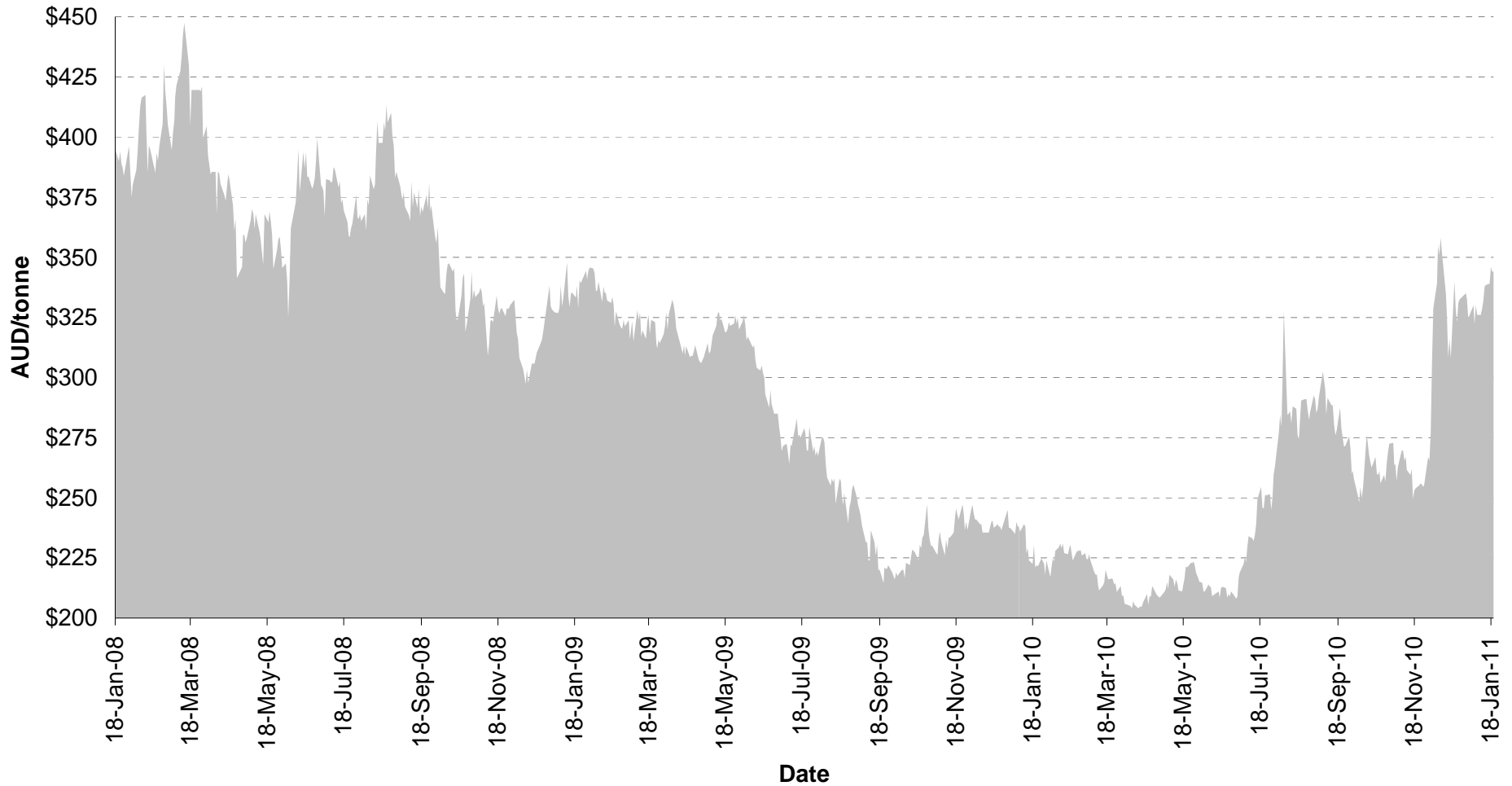
January 2008

January 2007

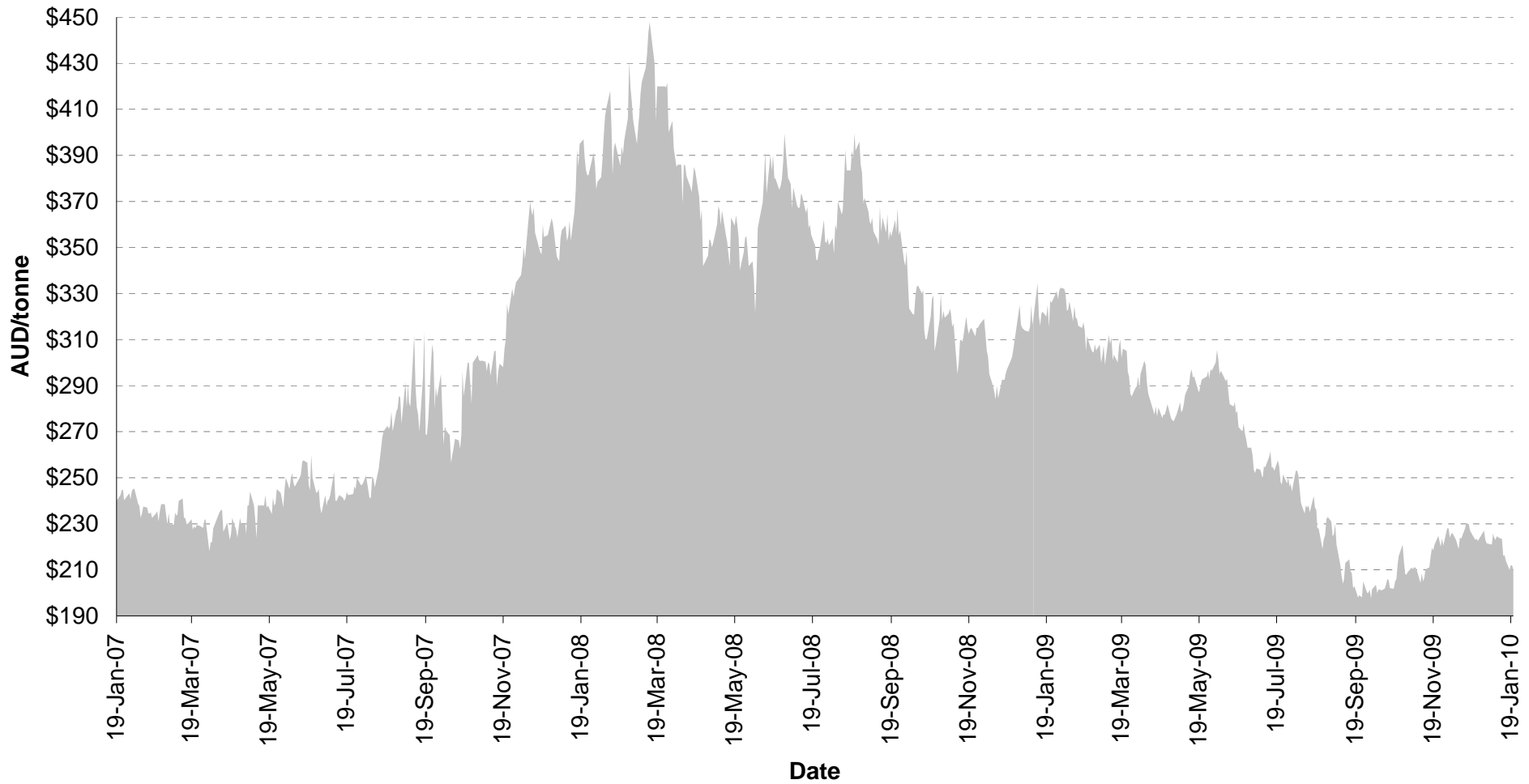
January 2006



ASX NSW Wheat January 2011 Contract



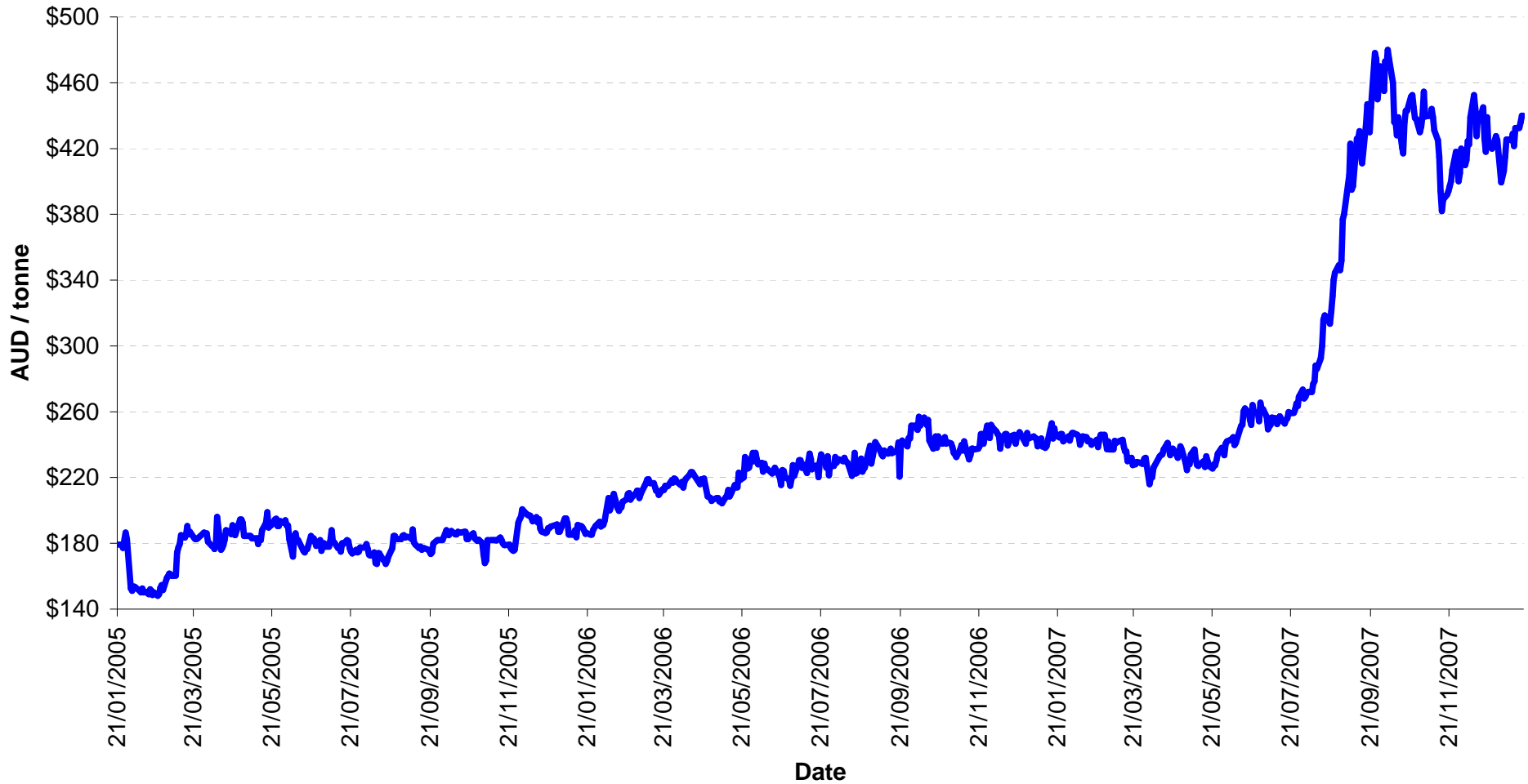
ASX NSW Wheat January 2010 Contract



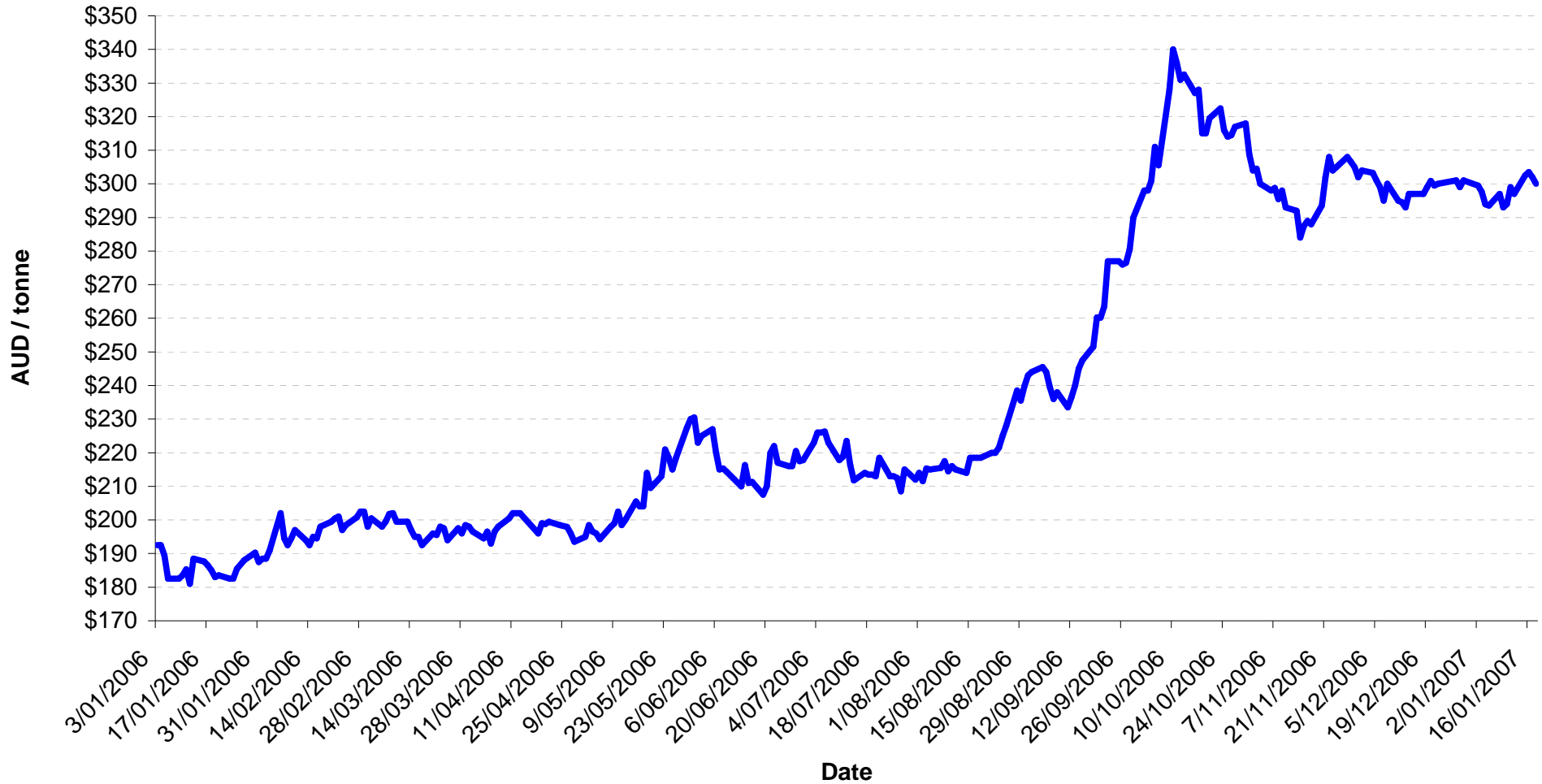
ASX NSW Wheat January 2009 Contract



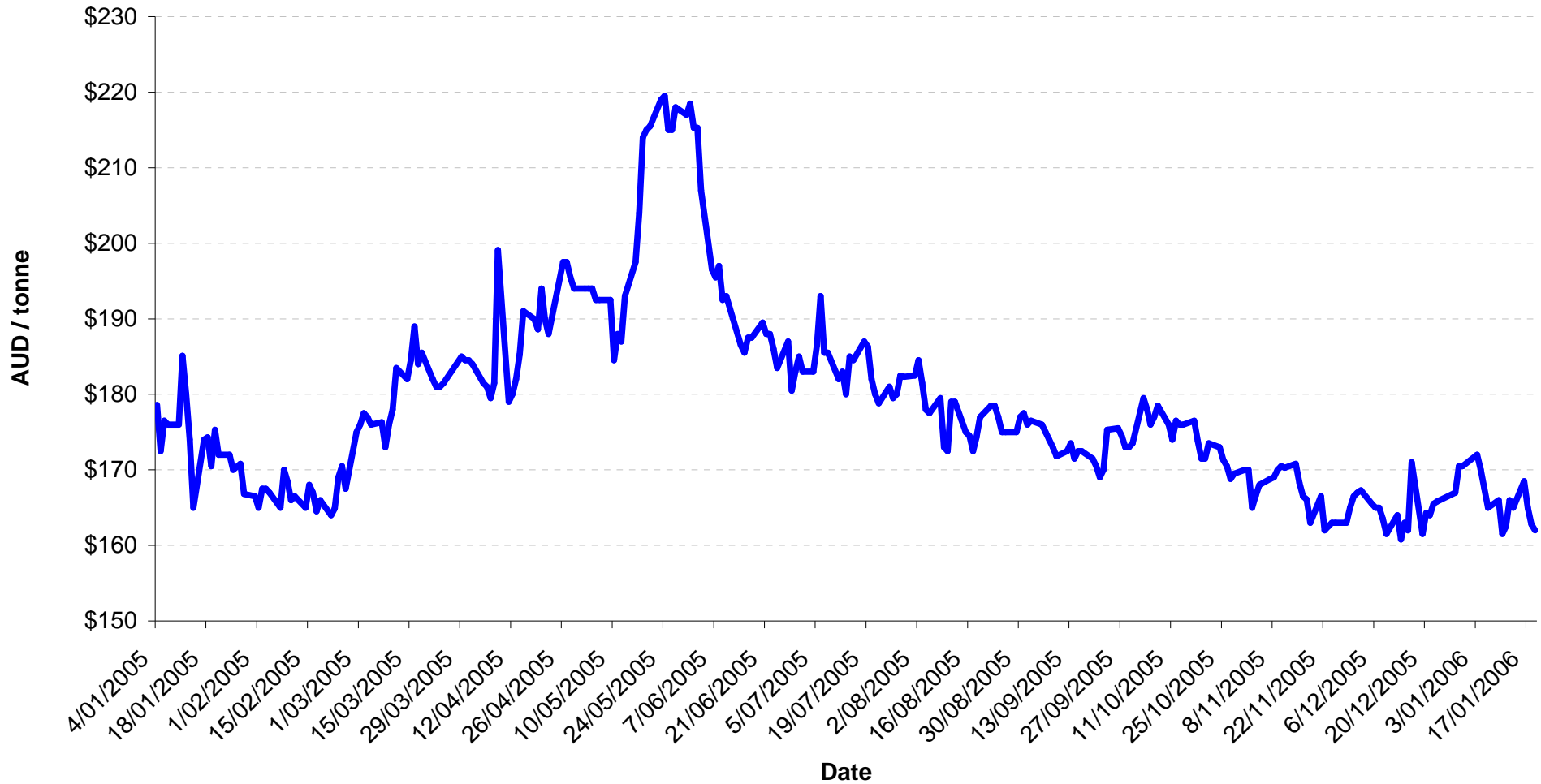
ASX NSW Wheat January 2008 Contract



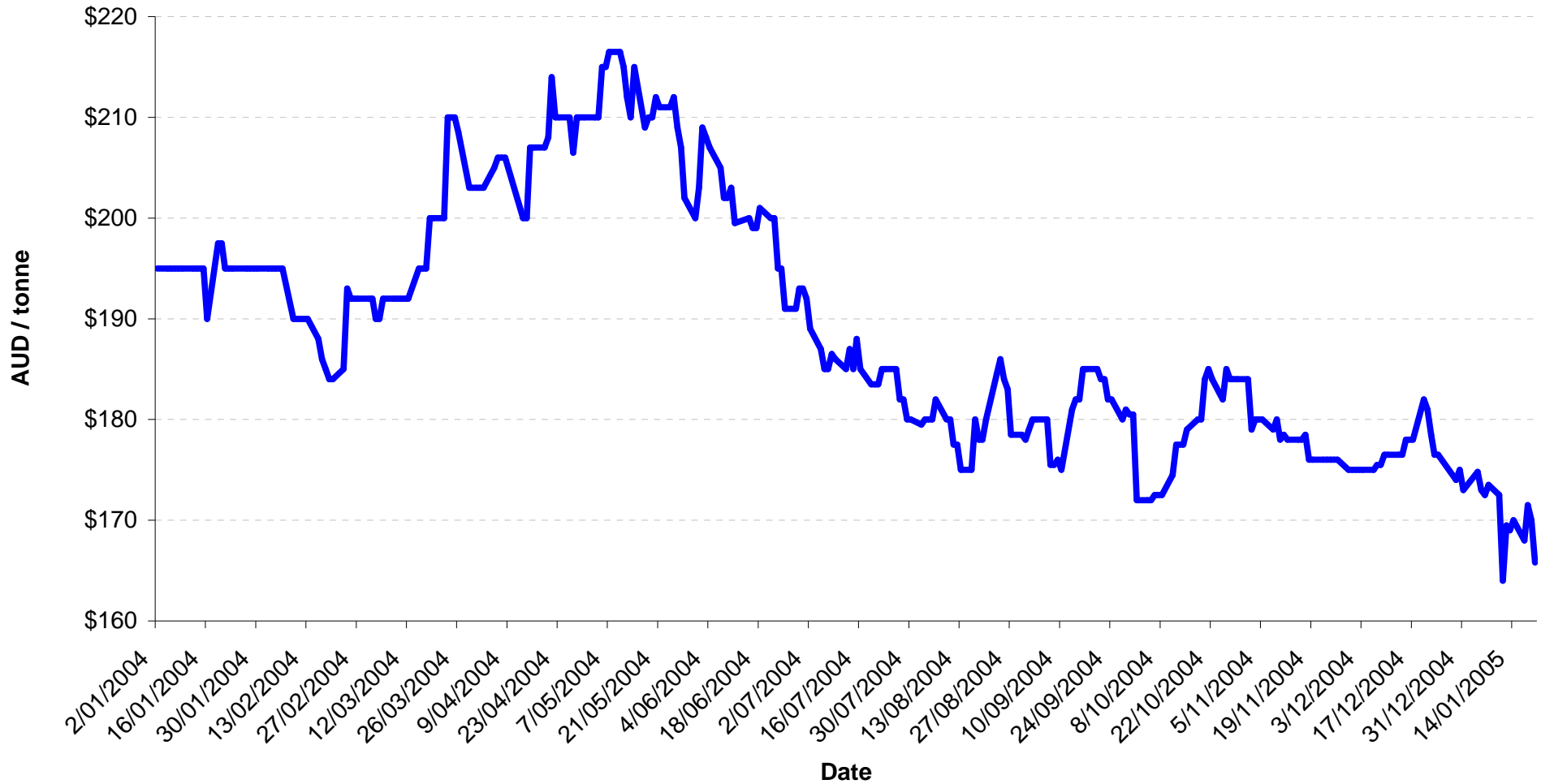
ASX NSW Wheat January 2007 Contract



ASX NSW Wheat January 2006 Contract



ASX NSW Wheat January 2005 Contract



ASX NSW Wheat January 2004 Contract

