



# **ASX Austraclear**

## **Software Installation Guide**

ANNI Connection

**Browser Deployment**

**July 2009**

Information provided is for educational purposes and does not constitute financial product advice. You should obtain independent advice from an Australian financial services licensee before making any financial decisions. Although ASX Limited ABN 98 008 624 691 and its related bodies corporate (“ASX”) has made every effort to ensure the accuracy of the information as at the date of publication, ASX does not give any warranty or representation as to the accuracy, reliability or completeness of the information. To the extent permitted by law, ASX and its employees, officers and contractors shall not be liable for any loss or damage arising in any way (including by way of negligence) from or in connection with any information provided or omitted or from any one acting or refraining to act in reliance on this information. This document is not a substitute for the Operating Rules of the relevant ASX entity and in the case of any inconsistency, the Operating Rules prevail.

© Copyright 2007 ASX Limited ABN 98 008 624 691. All rights reserved 2007.

ASX Limited  
ABN 98 008 624 691

20 Bridge Street, Sydney NSW 2000  
PO Box H224  
Australia Square NSW 1215

Telephone: +61 2 9227 0000  
Facsimile: +61 2 9227 0859  
Email: [info@asx.com.au](mailto:info@asx.com.au)

Updated: July 2009  
Version: 2.1

## ASX Austraclear Browser Deployment Guide – ANNI

### 1 Prerequisites

**Client Workstation Requirements and Network Infrastructure & Security Requirements** are explained in the Technical Briefing Papers for ANNI Participants.

**Administrator Rights** - you will need full Administrator access to your PC during initial installation. Ensure your user profile has read/write access to at least 25MB of hard disk space.

**Digital Certificate** - A Client Side Digital Certificate is required to be downloaded and installed prior to starting deployment of EXIGO system. If you are a first time user of the system, please follow the instructions provided in the Digital Certificate User Enrolment Guide which is published on the ASX Austraclear website:

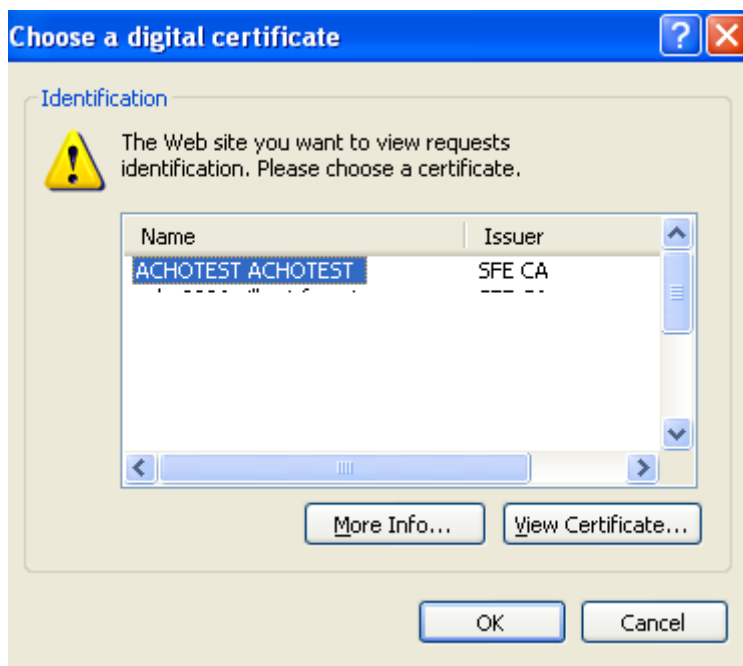
[http://www.sfe.com.au/content/austraclear/operations/exigo/technical/digital\\_guide.pdf](http://www.sfe.com.au/content/austraclear/operations/exigo/technical/digital_guide.pdf) , otherwise, please proceed to Step 2

### 2 Browser Deployment Procedures

#### 1) Application Deployment \*

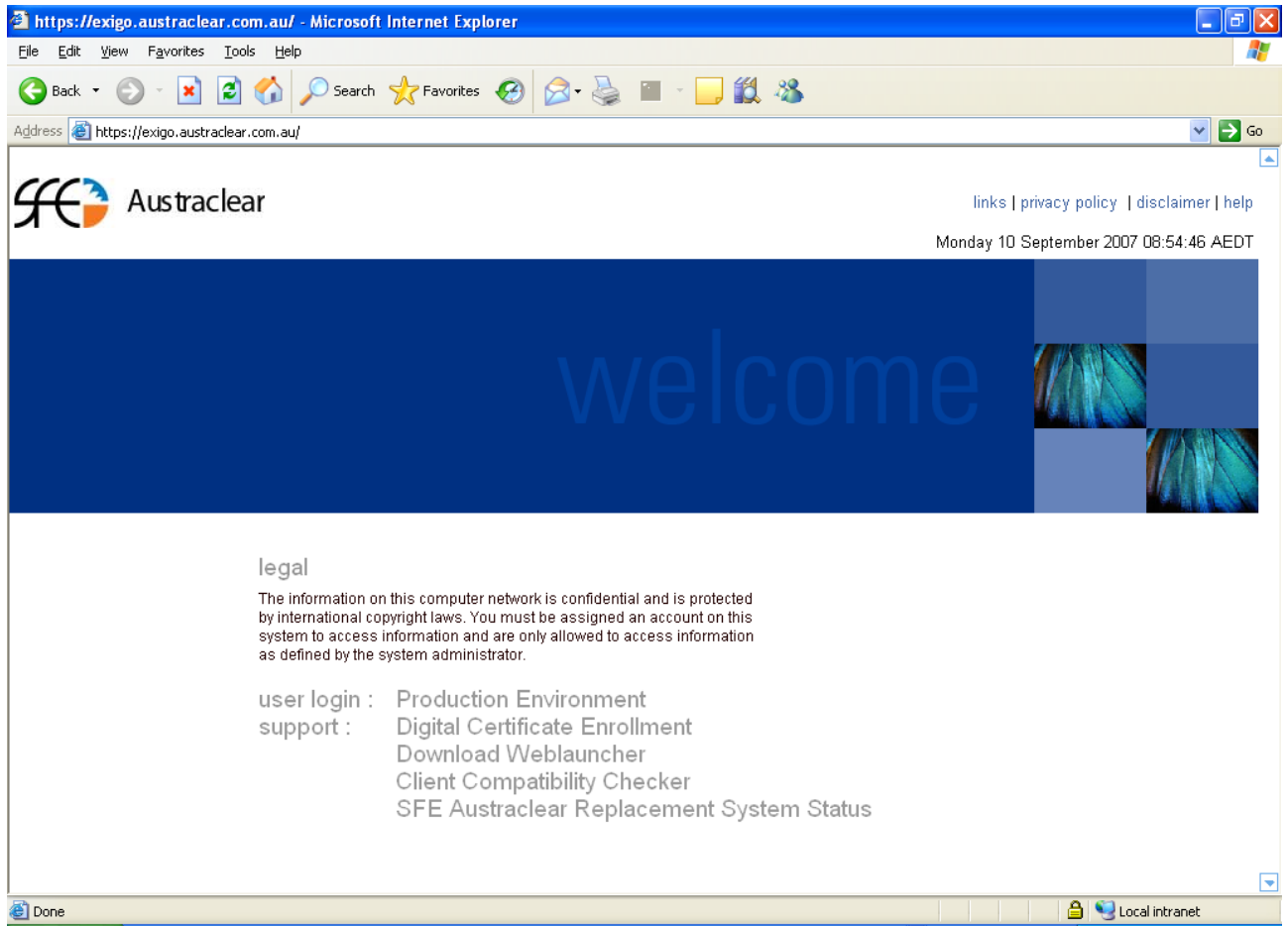
Enter <https://exigo.austraclear.com.au/> for the Production Environment.

The Client Authentication screen will appear. Please select your Digital Certificate and click Ok.



\* If you cannot view these pages follow the troubleshooting guide at the end of this document

After you have entered the Production environment address you will be taken to the website screen as shown below



**2) Install EXIGO CSD WebLauncher (Only if you haven't done this, otherwise, please proceed to Step 3)**

[EXIGO CSD WebLauncher Installer \(requires admin rights\)](#)

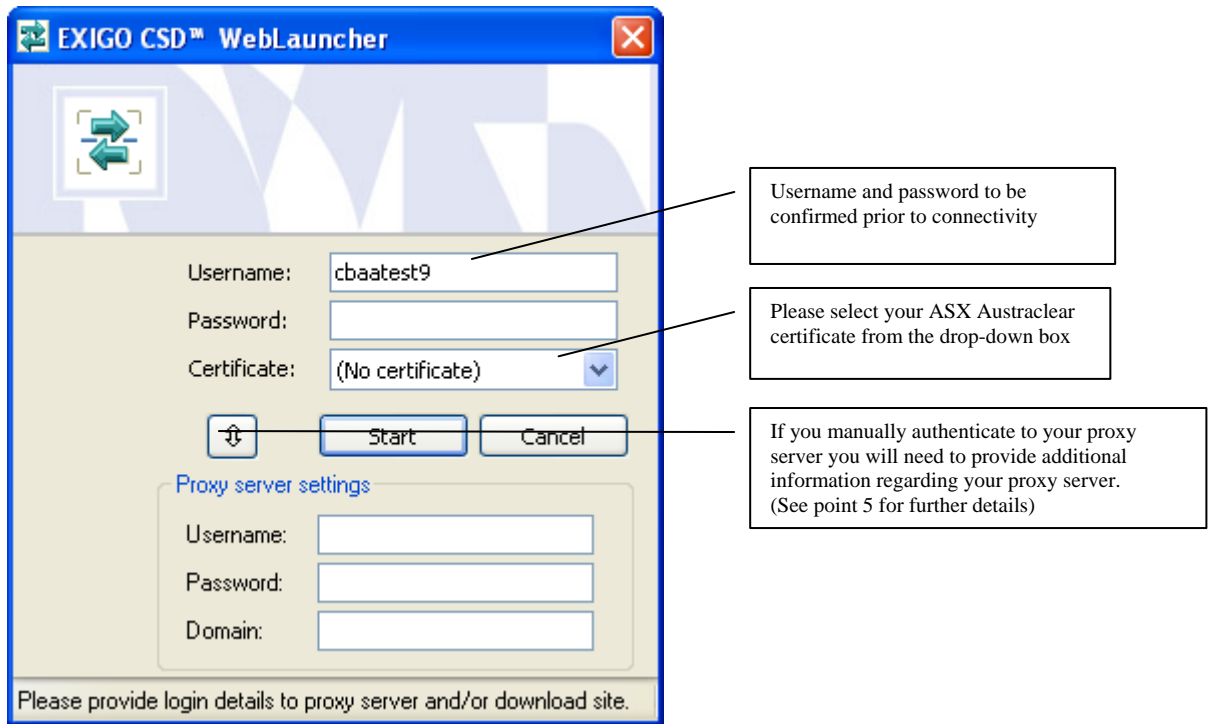
Please refer to the [WebLauncher Installation Guide](#) located on the ASX Austraclear Website (Technical section) for installation instructions:

<http://www.sfe.com.au/content/austraclear/operations/exigo/technical/weblauncher.pdf>

This will need to be installed prior to downloading the EXIGO client for the first time.

**3) Launching the EXIGO Application**

Once you have completed the installation of the new WebLauncher, go back to the homepage for the environment you are connecting to and launch the EXIGO system by clicking the link for the [Production Environment](#) and you will see the following dialog box. This box is your Weblauncher Application authentication screen which must be completed prior to your actual login to the Production EXIGO CSD.



**Proxy Server Details – Manual Authentication**

If your access to EXIGO is via a proxy that requires you to manually authenticate, this information will need to be entered. Please contact your Administrator for further details.

Proxy server username \_\_\_\_\_  
 Proxy server password \_\_\_\_\_  
 Proxy server domain \_\_\_\_\_

After completing the required information above, Press START

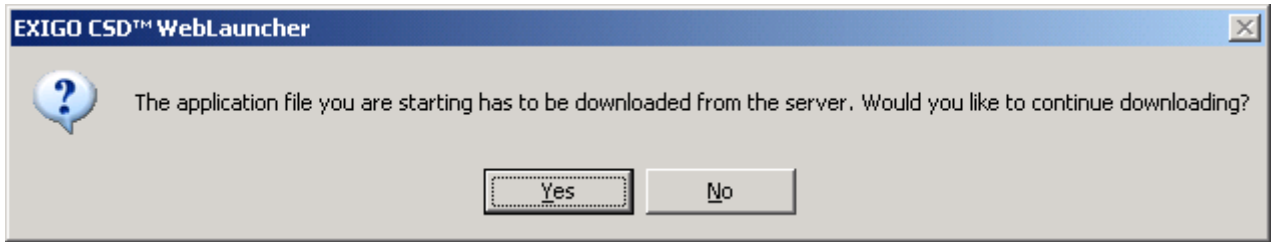
**Please note**, Exigo does NOT support Automatically Detect Settings in Proxy settings. Please ensure that this functionality is disabled in your proxy settings. This setting can be found on the following menu in internet explorer:

Tools→ Internet Options → Connections → LAN Settings

**4) The screen below will appear if:**

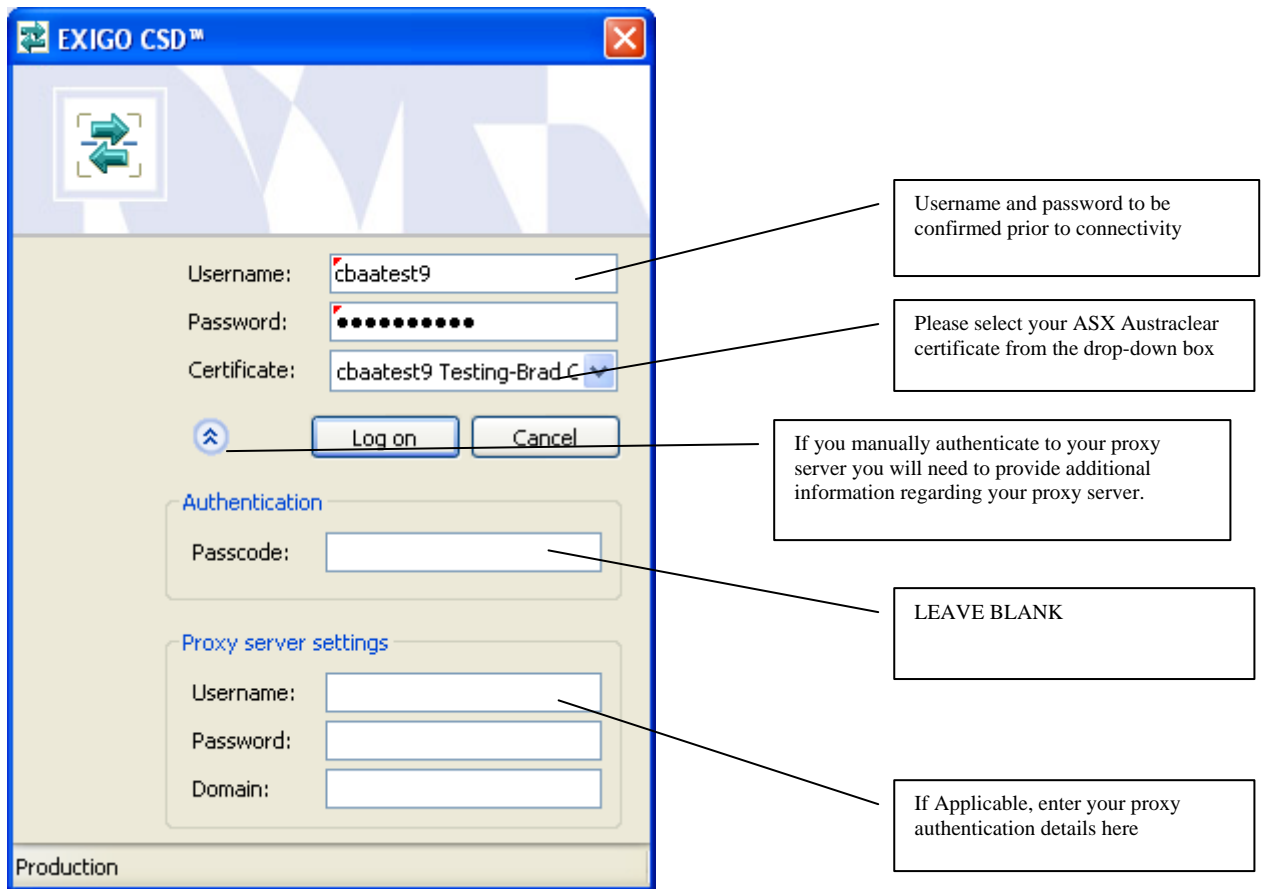
- a) This is the first time your PC has downloaded the version of the EXIGO GUI
- b) The EXIGO GUI that you are about to download is a new version

Otherwise proceed to Step 5



Press Yes to download.

**5) You will now be presented with the EXIGO CSD Login Dialog Box:**



PLEASE NOTE: All the details that you've entered from the web launcher authentication screen will be carried forward to the EXIGO CSD login.

**A) Username and Password**

Enter Username and Password, as provided for access to the system

Username \_\_\_\_\_

Password \_\_\_\_\_ (Note that the password is case sensitive)

**B) Certificate**

Please select your ASX Austraclear Digital Certificate from the dropdown box.

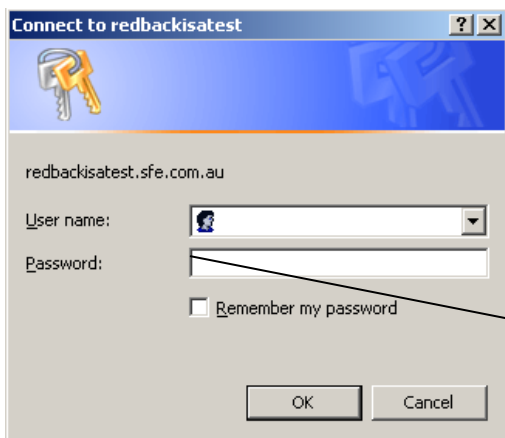
**C) Proxy Server Settings – only if you are required to Manually Authenticate**

If your access to the EXIGO is via a proxy that requires you to manually authenticate, this information will need to be entered. Please contact your Administrator for further details.

Username \_\_\_\_\_  
 Password \_\_\_\_\_  
 Domain \_\_\_\_\_

**Proxy Server – Manual Authentication only**

If you are required to manually authenticate to your Proxy Server, the following dialog box will be shown during the download process. The appropriate proxy server details will need to be entered – please contact your IT Administrator for further details.

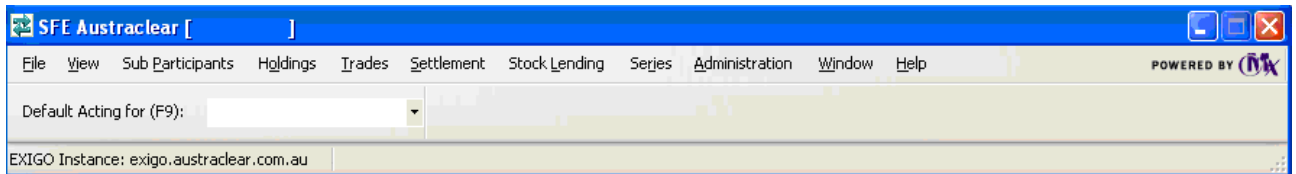


This information is necessary if you are required to **manually authenticate** to your proxy server. Please contact your IT Administrator for further details

(Sample screen shot only)

**D) Press “Logon” after completing all the requirements above.**

**6) The following EXIGO CSD menu bar will appear**



You have successfully logged on to the Production EXIGO system.

### Trouble Shooting Guide for accessing the ASX Austraclear website

Note. Perform tests on this page ONLY if you cannot view the Exigo webpage. If either of the following tests fail please contact your systems administrator.

#### *For Exigo Production Environment:*

Execute a command prompt session:

**Start** → **run** → (type) **cmd**

Type:

***nslookup exigo.austraclear.com.au***

The output should be as follows:

**Name: exigo.austraclear.com.au**

**Address: 203.18.165.220**

Or

**telnet exigo.austraclear.com.au 443**

The output should be as follows:

