



ASX Austraclear

ANNI Connection

File Deployment Guide

June 2009

Information provided is for educational purposes and does not constitute financial product advice. You should obtain independent advice from an Australian financial services licensee before making any financial decisions. Although ASX Limited ABN 98 008 624 691 and its related bodies corporate (“ASX”) has made every effort to ensure the accuracy of the information as at the date of publication, ASX does not give any warranty or representation as to the accuracy, reliability or completeness of the information. To the extent permitted by law, ASX and its employees, officers and contractors shall not be liable for any loss or damage arising in any way (including by way of negligence) from or in connection with any information provided or omitted or from any one acting or refraining to act in reliance on this information. This document is not a substitute for the Operating Rules of the relevant ASX entity and in the case of any inconsistency, the Operating Rules prevail.

© Copyright 2007 ASX Limited ABN 98 008 624 691. All rights reserved 2007.

ASX Limited
ABN 98 008 624 691

20 Bridge Street, Sydney NSW 2000
PO Box H224
Australia Square NSW 1215

Telephone: +61 2 9227 000
Facsimile: +61 2 9227 0859
Email: info@asx.com.au

Updated: June 2009
Version: 2.1

ASX Austraclear File Deployment Guide – ANNI

1 Prerequisites

Software installation completed. Please ensure that you have successfully completed the installation of the ASX Austraclear system as documented in the Software Installation Guide before proceeding with logging in to the new system.

Digital Certificate Enrolment completed. A client side digital certificate is required to be downloaded and installed prior to logging into the ASX Austraclear system.

Please follow the instructions provided in the Digital Certificate User Enrolment Guide which is published on the ASX Austraclear website, http://www.sfe.com.au/content/austraclear/operations/exigo/technical/digital_guide.pdf.

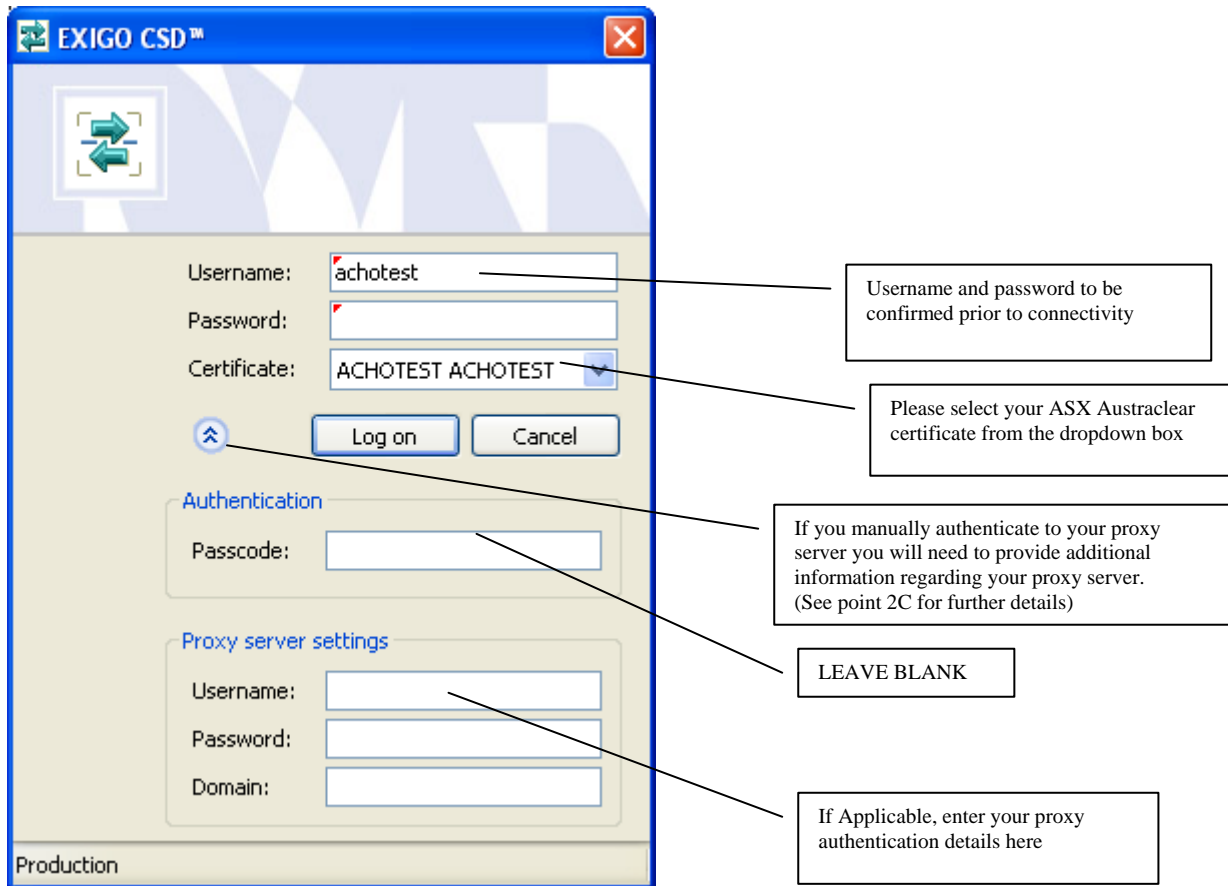
2 File Deployment Procedures

1) Log into the application

To launch the ASX Austraclear Application either:

- Click on the desktop shortcut (if you have created one) OR;
- Launch the ASX Austraclear System (EXIGO CSD) via the Start Menu:
START->Programs->EXIGO CSD->EXIGO CSD...

2) You will now be presented with the EXIGO CSD Login Dialog box



A) Username and Password

Enter Username and Password, as provided for access to the system.

Username _____

Password _____ (Note that the password is case sensitive)

B) Digital Certificates

Please select your ASX Austraclear Digital Certificate from the drop-down box.

C) Proxy Server Details – Manual Authentication

If your access to the ASX Austraclear is via a proxy that requires you to manually authenticate, this information will need to be entered. Please contact your Administrator for further details.

Proxy server username _____

Proxy server password _____

Proxy server domain _____

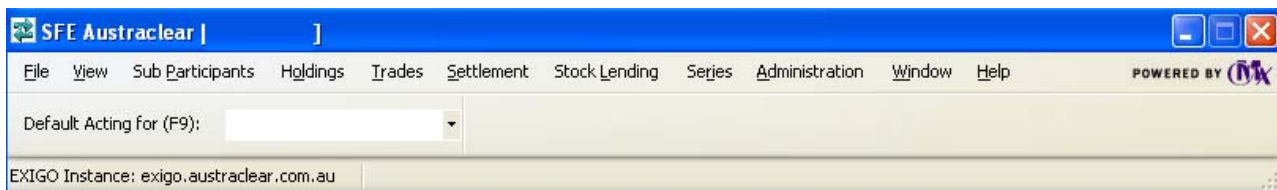
Press Log on after completing all the requirements above.

Please note, Exigo does NOT support Automatic Proxy Configuration Script. Please ensure that this functionality is disabled in your proxy settings:

This setting can be found on the following menu in internet explorer:

Tools → Internet Options → Connections → LAN Settings

3) The following GUI menu bar will appear.



3 Next Step

Once you have successfully logged into the ASX Austraclear system, please refer back to your ANNI Industry Wide Test Environment User Guide for further instructions.

** If you cannot view these pages check the following troubleshooting steps on the next page:

Note. Perform tests on this page ONLY if you cannot view the webpage. If either of the following tests fail please contact your systems administrator.

For Exigo Production Environment:

Execute a command prompt session:

Start → run → (type) cmd

Type:

```
nslookup 203.18.165.220
```

The output should be as follows:

```
Name: exigo.austraclear.com.au  
Address: 203.18.165.220
```

Ping the following address:

Type:

```
ping exigo.austraclear.com.au
```

The output should be as follows:

Pinging exigo.austraclear.com.au [203.18.165.220] with 32 bytes of data:

```
Reply from 203.18.165.220: bytes=32 time=2ms TTL=124  
Reply from 203.18.165.220: bytes=32 time=2ms TTL=124
```