



SFE Austraclear System

Client Side Digital Certificates (CSDC)

Import and Export Procedures

February 2006

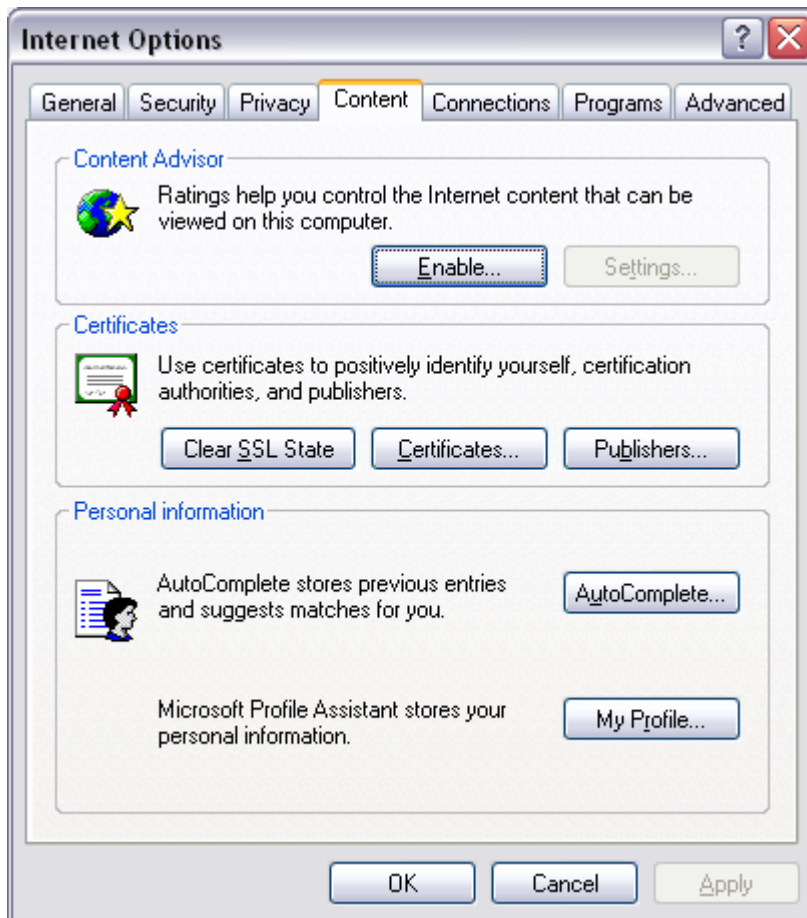
Client Side Digital Certificates (CSDC)

As a digital certificate can only be downloaded from the VeriSign website once, this guide is required to export a digital certificate from one PC to another.

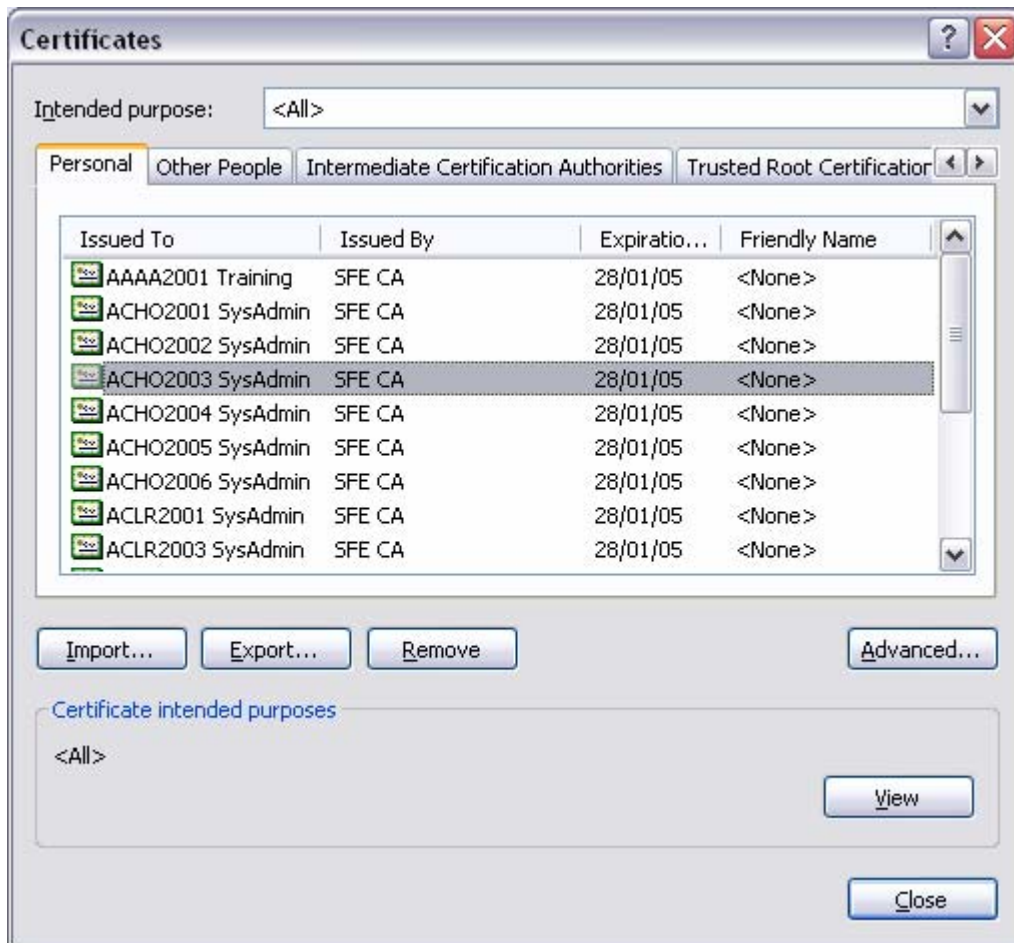
This will be required for Business Continuity Processing / Disaster Recover (BCP / DR) sites where a certificate will need to be installed on the BCP / DR PC in addition to the normal production PC.

Procedures to Export Certificate

In Internet Explorer Click on **Tools**, then **Internet Options**. Select the **Content** tab and then click on the **Certificates** button.



In the *Certificates* window select the certificate that you wish to export then click **Export**.



The *Certificate Export Wizard* window then appears. Please click **Next** to begin the Export. **Ensure that you have checked “Yes, export the private key”** then click **Next**.



It is recommended that you **Enable strong protection** then click **Next**. You are required to setup a password to protect the private key. This password will be required in order to import the certificate.



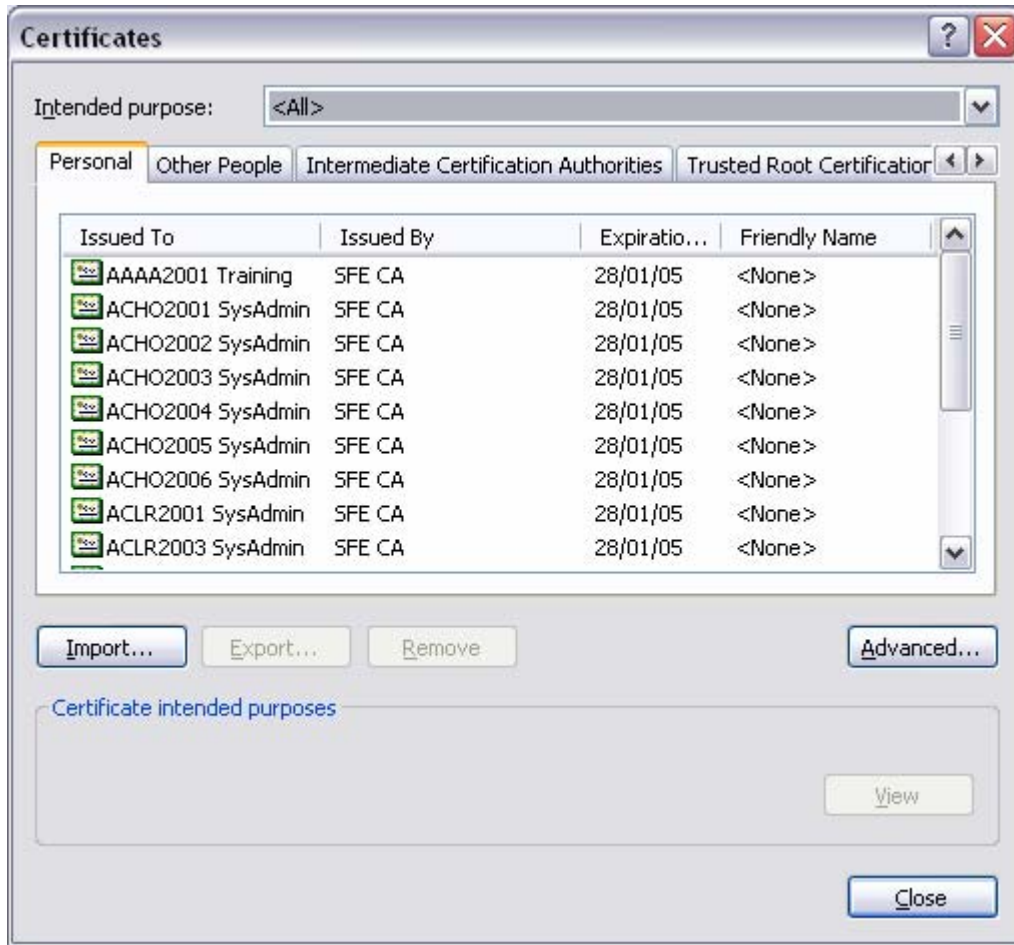
Click on the **Browse** button to select the destination for the export of the certificate. Once this has been confirmed, click **Next**, then click **Finish**.

A confirmation box will appear confirming that the **export was successful**.



Procedures to Import Certificate

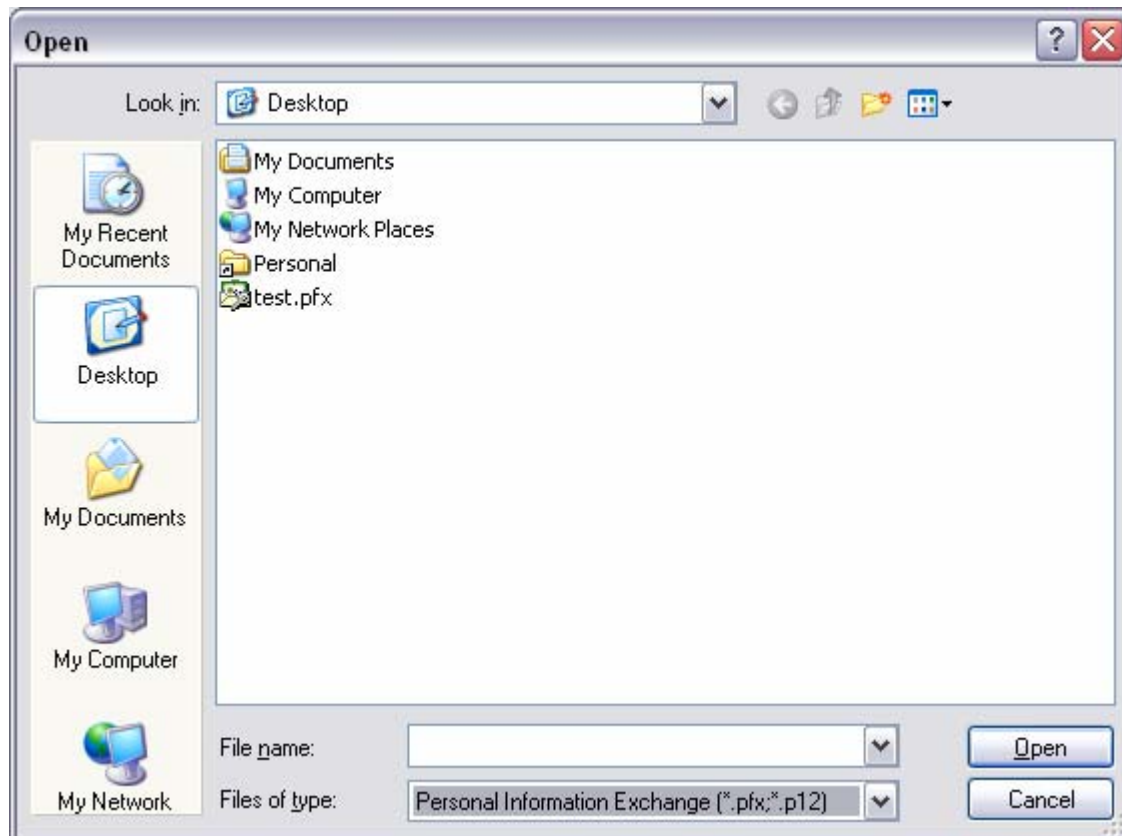
In Internet Explorer, Click on the **Tools** menu, then **Internet Options**. Select the **Content** tab and then click on the **Certificates** button. In the *Certificates* window, click **Import**



The *Certificate Import Wizard* window appears. Please click **Next**. Click **Browse** to navigate to the location where the certificate was originally exported to.



Please ensure that you change the file type from the default *X 509 Certificate* to *Personal Information Exchange (*.pfx)* in the **File of Type** drop down box. Select the certificate that you wish to import and click **Open**. Click **Next** to proceed



You will then be prompted for the password for the private key. This is the same password that was used when exporting the certificate originally. You are required to enter the password for the private key, and then click **Next**. Windows will then allow you select where you would like the certificate stored. Click **Next** once completed.



Click **Finish** to complete the *Certificate Import Wizard*. A confirmation box will appear confirming that the import was successful.



- Digital Certificate successfully exported and imported.**

Next Step

Once the Digital Certificate has been successfully installed, please refer back to your Production Environment User Guide for the procedures to deploy the software for the new system, using either the file or browser deployment method.