



## **ASX Austraclear**

### **EXIGO Common Gateway GUI version 1-11 (Production and Test Bed)**

#### **(HTHL File Upload)**

### **Installation and User Guide**

June 2010

Information provided is for educational purposes and does not constitute financial product advice. You should obtain independent advice from an Australian financial services licensee before making any financial decisions. Although ASX Limited ABN 98 008 624 691 and its related bodies corporate (“ASX”) has made every effort to ensure the accuracy of the information as at the date of publication, ASX does not give any warranty or representation as to the accuracy, reliability or completeness of the information. To the extent permitted by law, ASX and its employees, officers and contractors shall not be liable for any loss or damage arising in any way (including by way of negligence) from or in connection with any information provided or omitted or from any one acting or refraining to act in reliance on this information. This document is not a substitute for the Operating Rules of the relevant ASX entity and in the case of any inconsistency, the Operating Rules prevail.

© Copyright 2007 ASX Limited ABN 98 008 624 691. All rights reserved 2007.

ASX Limited  
ABN 98 008 624 691

20 Bridge Street, Sydney NSW 2000  
PO Box H224  
Australia Square NSW 1215

Telephone: +61 2 9227 000  
Facsimile: +61 2 9227 0859  
Email: [info@asx.com.au](mailto:info@asx.com.au)

Updated: June 2009  
Version: 1.1

## Table of Contents

ASX Austraclear.....	1
Introduction .....	4
1. Uninstall of Previous Versions .....	4
2. Install EXIGO Common Gateway GUI ver V1-11.....	4
3. Running EXIGO Common Gateway GUI.....	8
4. Application User Guide .....	9
How to Start the Application .....	9
How to Exit the Application .....	10
Loading HTHL Files .....	10
4.2.2 Uploading HTHL Files.....	10
Message Functions .....	11
4.3.1 Message Explorer.....	11
4.3.2 Query HTHL Messages.....	12
4.3.3 View HTHL Message Details .....	12
4.3.4 Print HTHL Message Details.....	12

## Introduction

This document is designed to give a detailed overview on the installation of EXIGO Common Gateway GUI version 1-6.

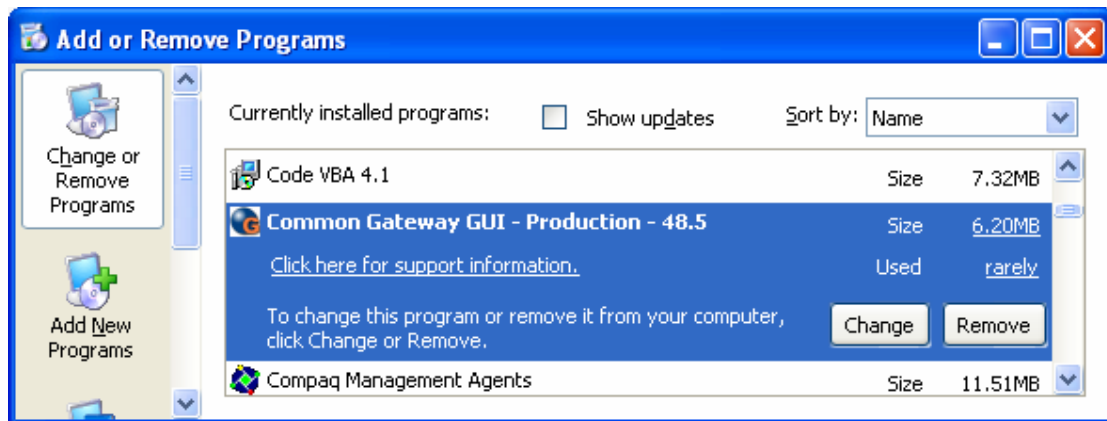
This document will also provide a description of the relevant functions in the Common Gateway GUI application.

## 1. Uninstall of Previous Versions

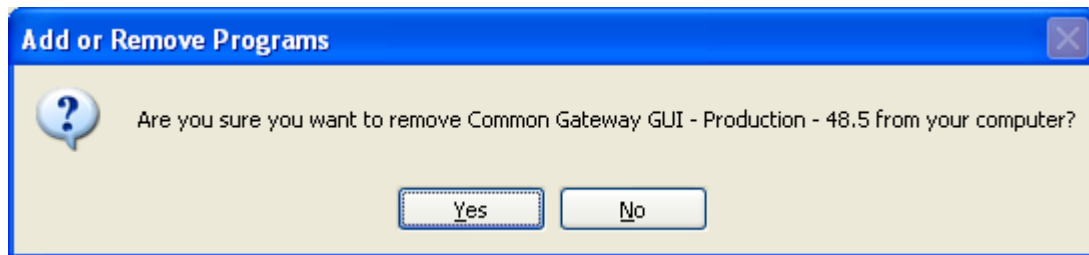
To uninstall previous version of EXIGO Common Gateway GUI, please go to:

Start -> Settings -> Control Panel -> Add Remove Programs

Select the previous version and click Remove (Test Bed A or Production)



Click "YES"



After you have uninstalled the application, you should see it disappear from the Add or Remove Programs page.

## 2. Install EXIGO Common Gateway GUI ver V1-11

Please make sure that installation of this program occurs on/after 19<sup>th</sup> June 2010. This version supersedes all previous versions. You will not be able to use previous versions.

Locate the location of the installation file, it should be named: For Production:

CGCL\_1.2.0\_PROD\_V1-11.msi

For TA: CGCL\_1.2.0\_TA\_V1-11.msi

It can be retrieved from: [http://www.asx.com.au/professionals/austraclear/technical\\_documents.htm](http://www.asx.com.au/professionals/austraclear/technical_documents.htm)  
under section 7.6.

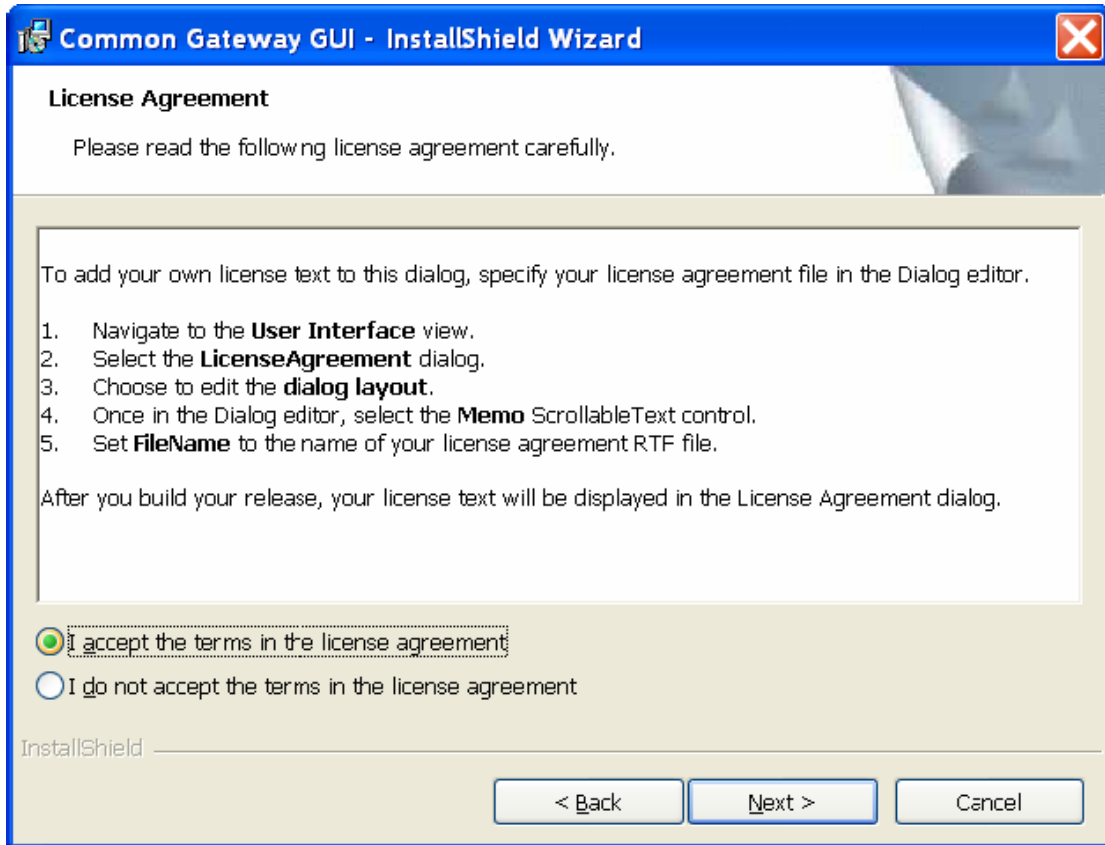
Download the file to your C:\ drive (We suggest you download it to your desktop)

Double click on the above to start installation

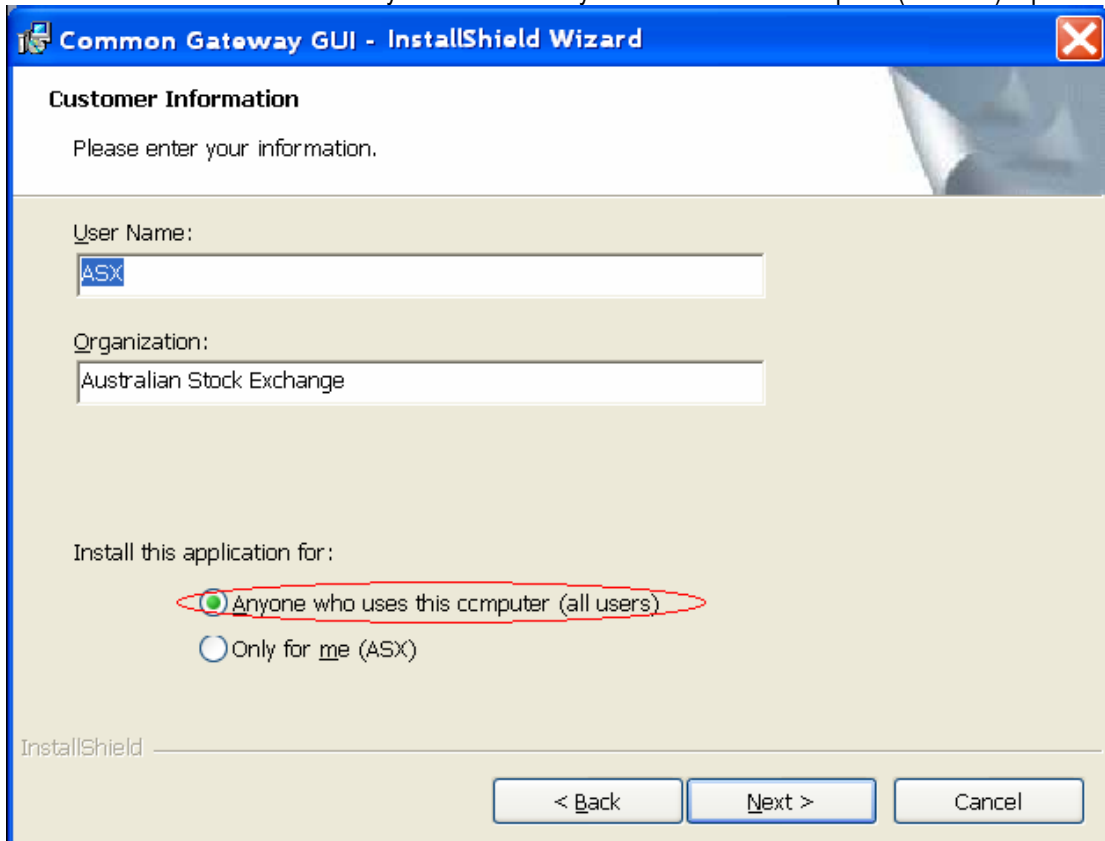
Click Next



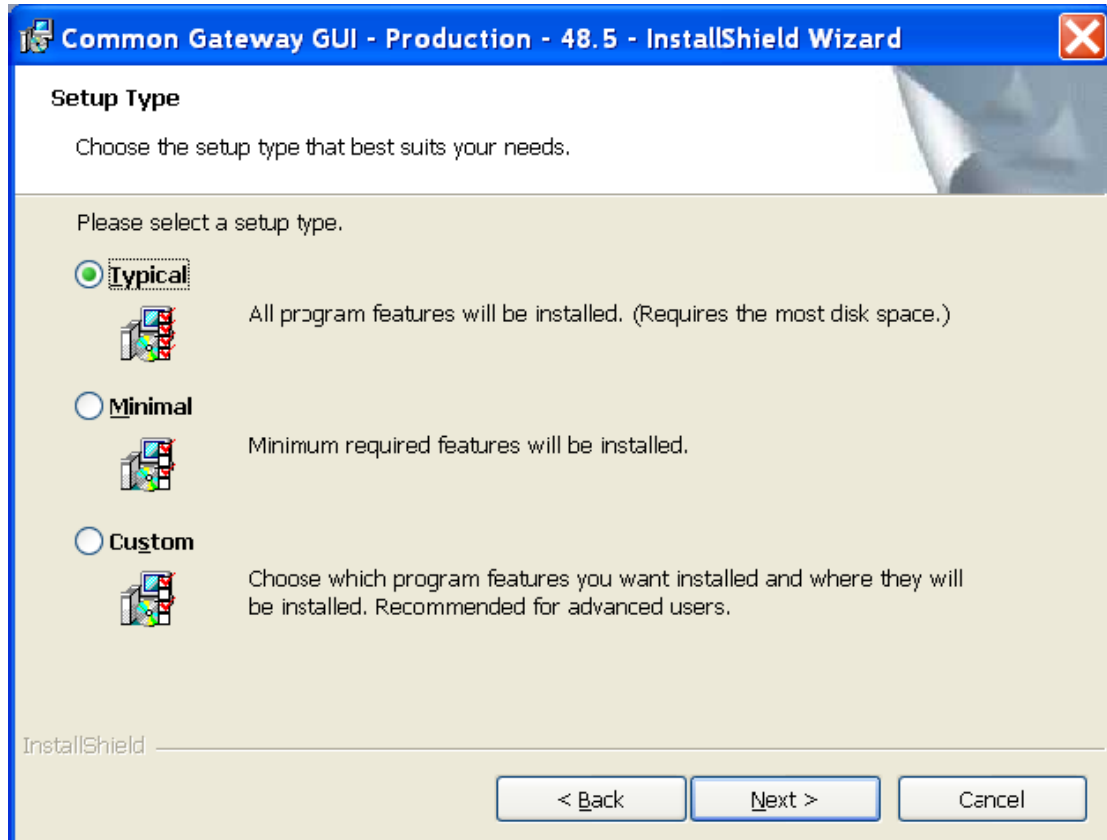
Accept the terms in the license agreement



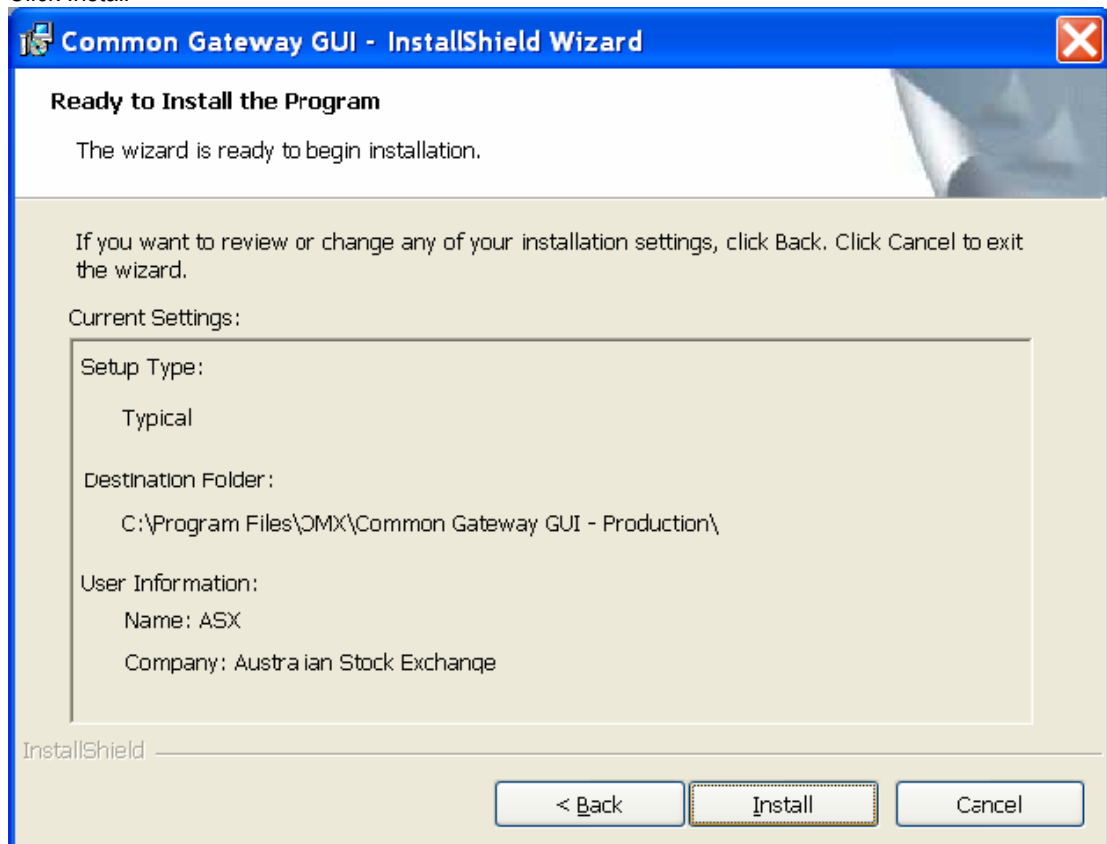
Make sure that in the below screen you select the “Anyone who uses this computer (all users)” option



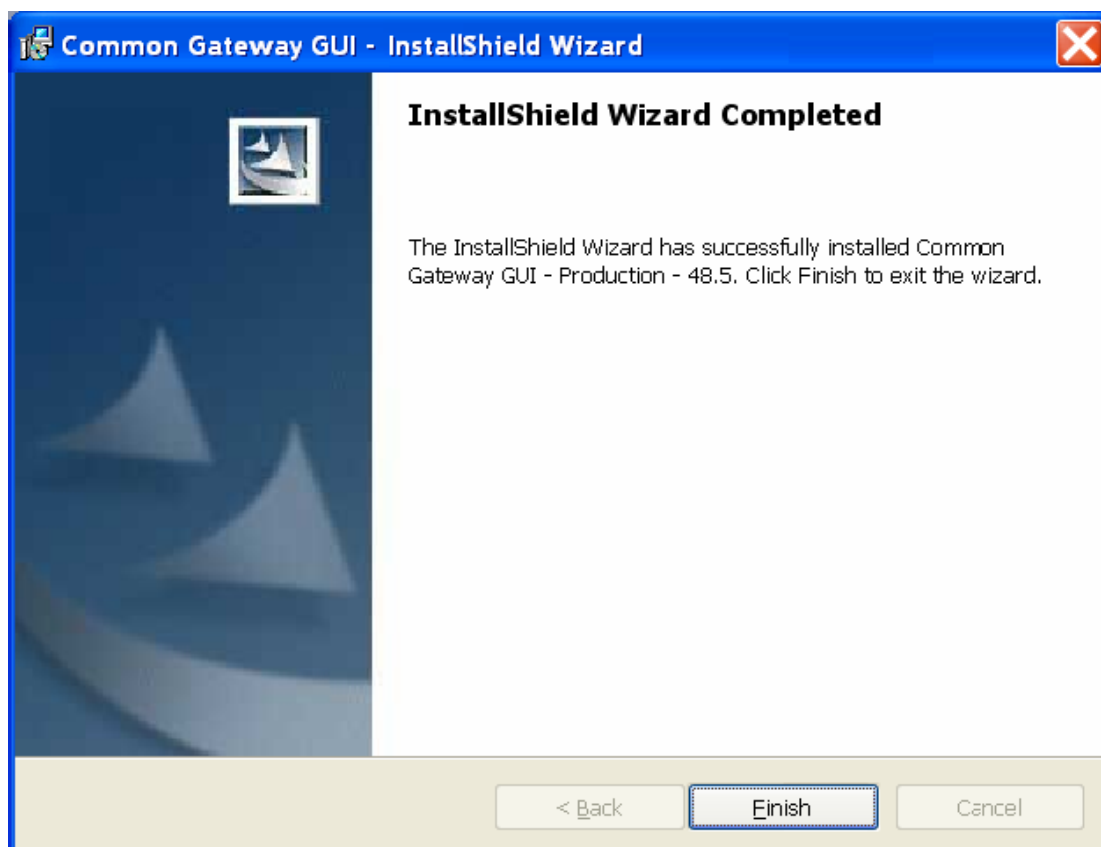
Choose Typical



Click Install



Click Finish



Congratulations! You have installed the new version of EXIGO Common Gateway GUI version 48.5

### 3. Running EXIGO Common Gateway GUI

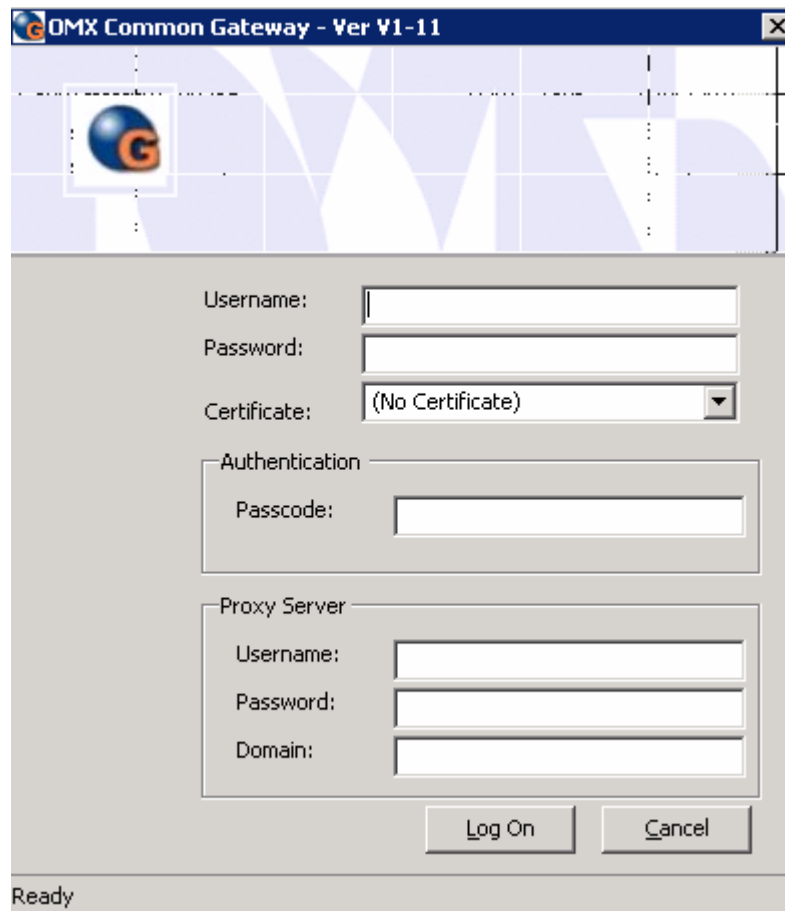
To initiate the program, go to:

Start -> Programs -> OMX Common Gateway -> Production

If you can see the version is correct you have installed it successfully.

Please attempt to login as normal (If you have any issues please ring ASX Austraclear Support)

Please make sure that you are using the correct version. Version 1-6



## 4. Application User Guide

This section provides a description of the relevant functions in the Common Gateway GUI application.

### Common Gateway GUI Application

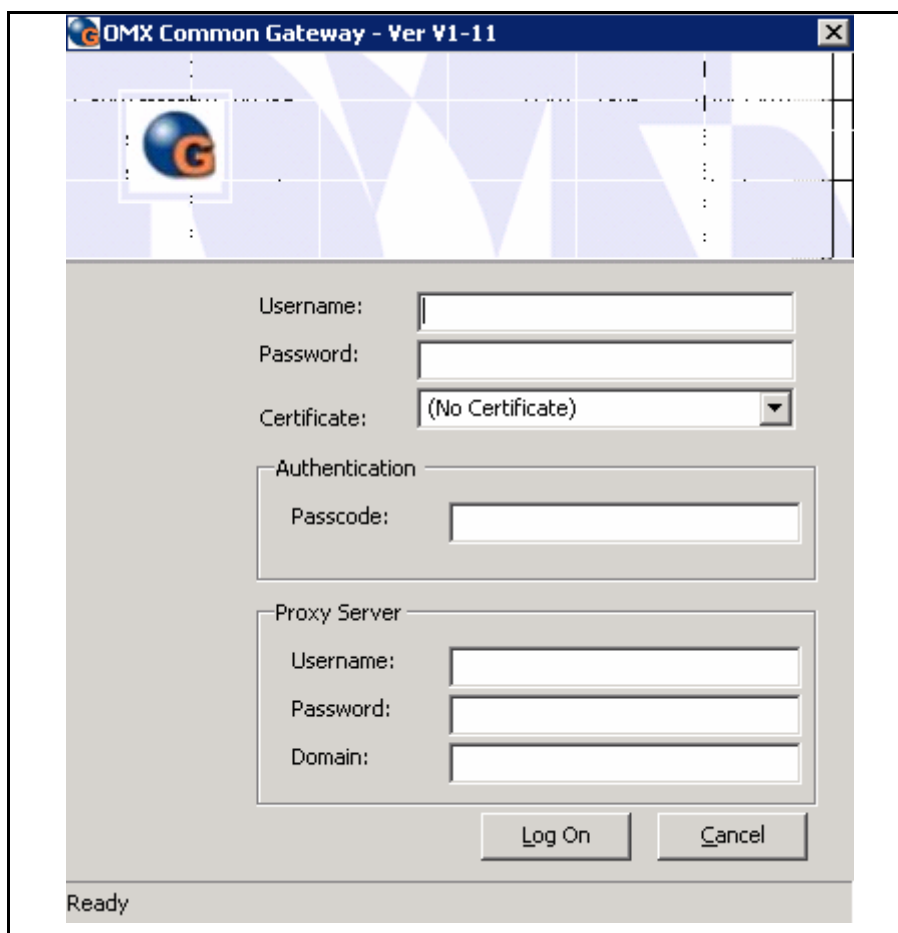
The Common Gateway GUI provides users with access to the following:

- Uploading HTH Lite messages
- Searching and printing messages

### How to Start the Application

Follow these procedures to start the application:

On the Windows Start Menu, choose Programs → OM Common Gateway → SWGUI.exe  
*Result:* The dialog is opened.



### Logging into the application:

1. Enter the New ASX Austraclear System username and password.
  2. Select the corresponding ASX Austraclear digital certificate from the drop down box.
  3. Once the new system validates your login credentials it will activate the appropriate menu items on the main menu bar.
- Result:* The main menu is opened.

## How to Exit the Application

To exit the interface application, click File, Close.

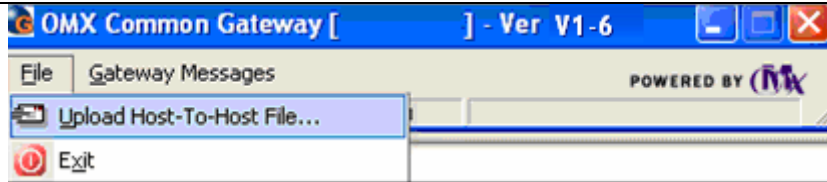
### Loading HTHL Files

A user can choose which HTHL file they wish to upload via the Common Gateway. The file will be processed by the Gateway. You can view the message uploaded via the Message Explorer (refer to Section 4.3.1).

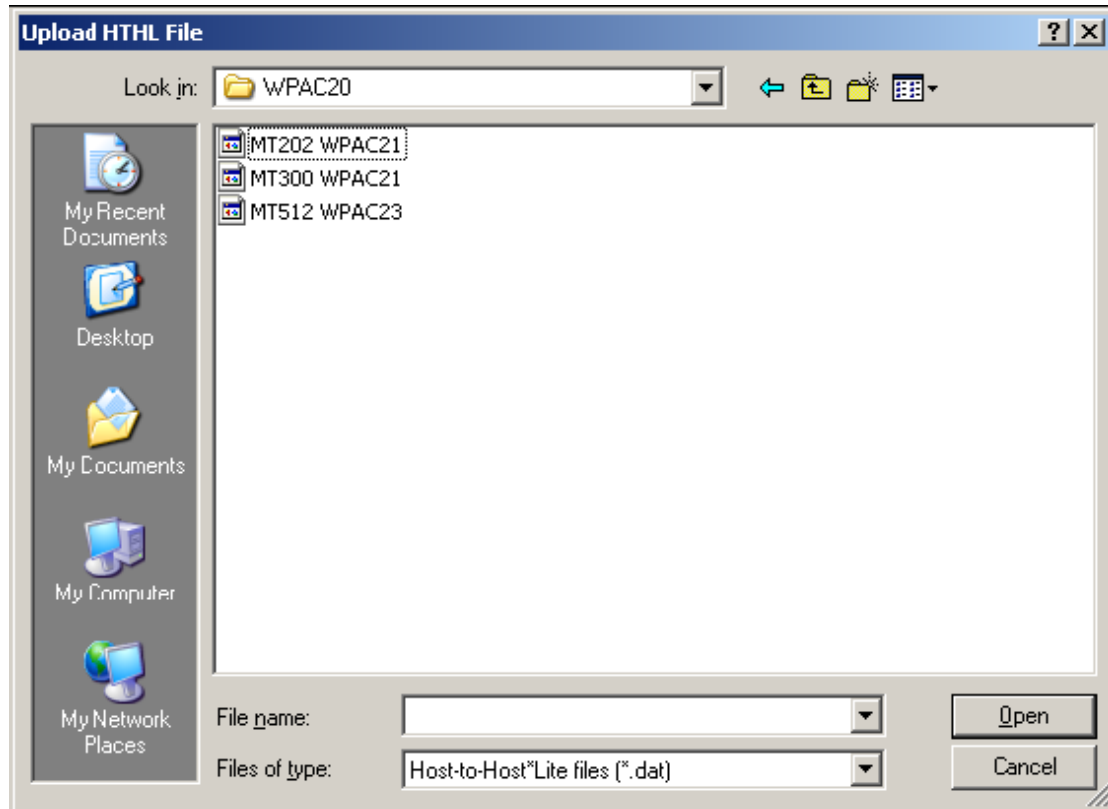
### 4.2.2 Uploading HTHL Files

Follow the procedure below to upload HTHL files.

Choose File → Upload Host-to-Host File.

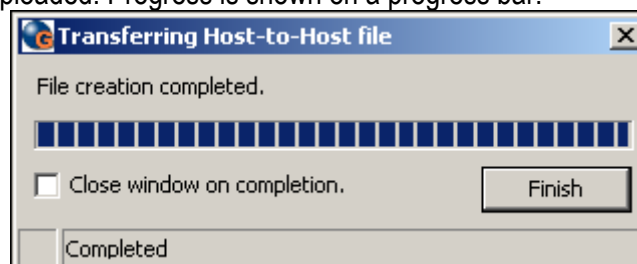


*Result:* Pop up window displays asking which file is to be uploaded.



Open the HTHL file to be uploaded.  
 HTHL files are generally located in the HTHL folder and have a DAT extension.  
 → Open

*Result:* The file is uploaded. Progress is shown on a progress bar.



→ Finish

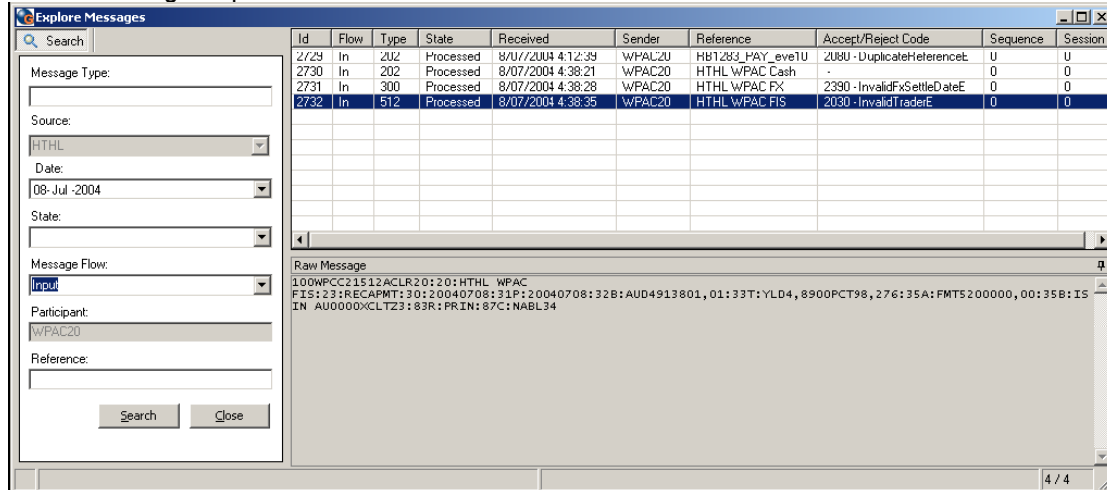
## Message Functions

This function is used to view Incoming and Outgoing messages from the HTHL Common Gateway System.

### 4.3.1 Message Explorer

The message explorer is the main screen for searching, viewing and printing HTHL messages.

File 1: Message Explorer



4.3.2 Query HTHL Messages

From the message explorer, you can query on HTHL messages to display both log information and raw message data.

1. Choose Gateway Message → Explore Messages.  
 Result: The Explore Messages window is displayed.

2. Enter data into the search criteria fields  
 3. → Search

4.3.3 View HTHL Message Details

To Display the raw message data you can perform the following:

Choose Gateway Messages → Explorer Messages.  
 Result: The Explore Messages window is displayed.

- Follow the previous procedures to populate the result section of the Explore Messages window.
- Highlight the message in the result section.

Result: The raw message information is displayed in the Raw Message section at the bottom right of the window.

4.3.4 Print HTHL Message Details.

From the message explorer, you can print the raw message information.

1. Follow the previous procedures to populate the raw message section of the Explore Messages window.  
 2. Right click the Raw Message section.  
 Result: A popup window is displayed  
 3. Select the Print option  
 Result: The Print option window is displayed.

- Set the print format and printer.

- → OK
- Result:* Message detail is printed to the selected printer.