



ASX Austraclear

Software Installation Guide

Internet Connection

Browser Deployment

July 2009



Information provided is for educational purposes and does not constitute financial product advice. You should obtain independent advice from an Australian financial services licensee before making any financial decisions. Although ASX Limited ABN 98 008 624 691 and its related bodies corporate (“ASX”) has made every effort to ensure the accuracy of the information as at the date of publication, ASX does not give any warranty or representation as to the accuracy, reliability or completeness of the information. To the extent permitted by law, ASX and its employees, officers and contractors shall not be liable for any loss or damage arising in any way (including by way of negligence) from or in connection with any information provided or omitted or from any one acting or refraining to act in reliance on this information. This document is not a substitute for the Operating Rules of the relevant ASX entity and in the case of any inconsistency, the Operating Rules prevail.

© Copyright 2007 ASX Limited ABN 98 008 624 691. All rights reserved 2007.

ASX Limited
ABN 98 008 624 691

20 Bridge Street, Sydney NSW 2000
PO Box H224
Australia Square NSW 1215

Telephone: +61 2 9227 0000
Facsimile: +61 2 9227 0859
Email: info@asx.com.au

Updated: July 2009
Version: 2.1



ASX EXIGO Browser Deployment Guide – Internet

1 Prerequisites

Client Workstation Requirements and Network Infrastructure & Security Requirements are explained in the Technical Briefing Papers for Internet Participants.

Administrator Rights - you will need full Administrator access to your PC during initial installation. Ensure your user profile has read/write access to at least 25MB of hard disk space.

Digital Certificate - A Client Side Digital Certificate is required to be downloaded and installed prior to starting deployment of ASX EXIGO system. (An RSA token and pin will also be required at the end of the process for logging on). Please follow the instructions provided in the Digital Certificate User Enrolment Guide which is published on the ASX Austraclear website: http://www.sfe.com.au/content/austraclear/operations/exigo/technical/digital_guide.pdf , otherwise, please proceed to Step 2

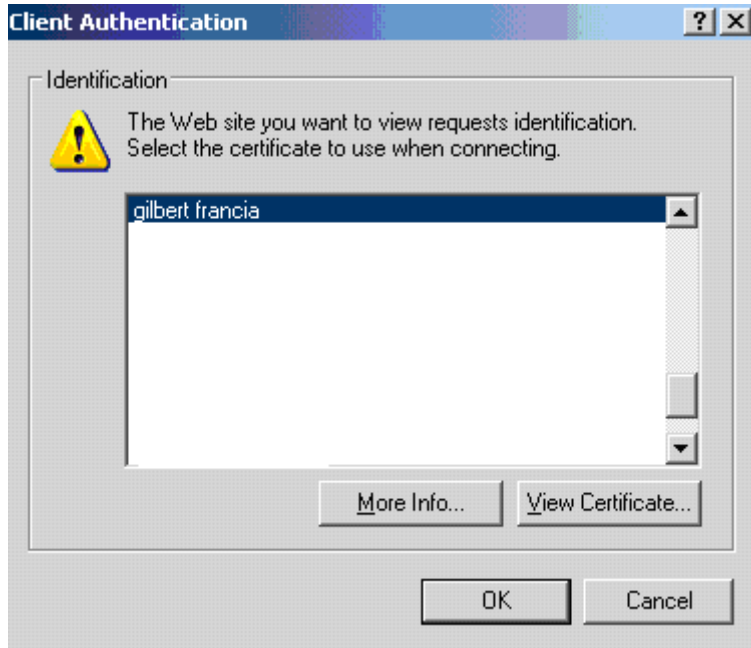


2 Browser Deployment Procedures

1) Application Deployment *

Enter <https://exigo.austraclear.com.au/> in the address bar of the Internet Explorer for the Production Environment.

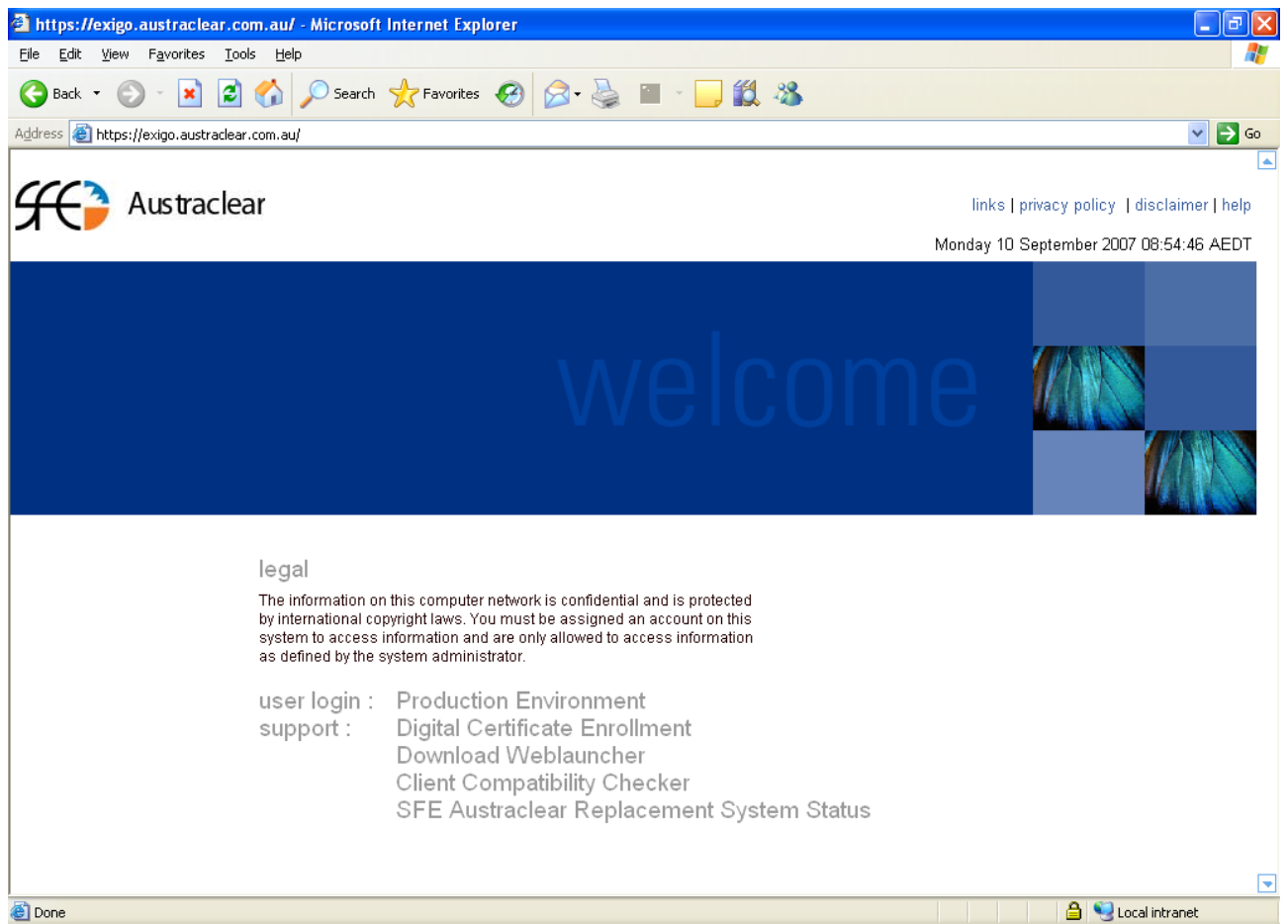
The Client Authentication screen will appear. Please select your Digital Certificate and click Ok.



* If you cannot view these pages follow the troubleshooting guide at the end of this document



After you have entered the Production environment address you will be taken to website screen as shown below:



2) Install EXIGO CSD WebLauncher (Only if you haven't done this)

EXIGO CSD WebLauncher Installer (requires admin rights)

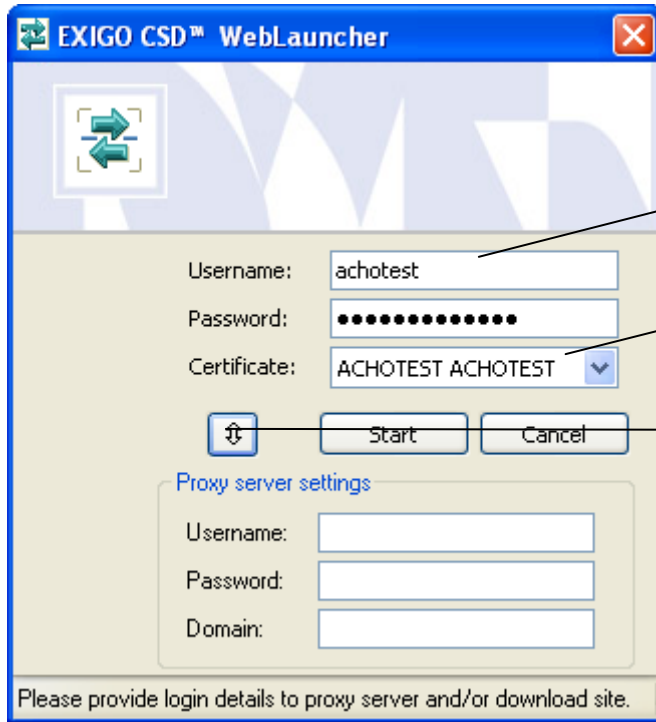
Please refer to the [WebLauncher Installation Guide](#) located on the ASX Austraclear Website (Technical section) for installation instructions:

<http://www.sfe.com.au/content/austraclear/operations/exigo/technical/weblauncher.pdf>

This will need to be installed prior to downloading the new ASX EXIGO client for the first time.

3) Launching the EXIGO application

Once you have completed the installation of the new WebLauncher, go back to the homepage for the environment you are connecting to and launch the EXIGO system by clicking the link for the [Production Environment](#) and you will see the following dialog box. This box is your Weblauncher Application authentication screen which must be completed prior to your actual login to the Production EXIGO CSD.



Username and password to be confirmed prior to connectivity

Please select your ASX Austraclear certificate from the drop-down box

If you manually authenticate to your proxy server you will need to provide additional information regarding your proxy server. (See point 6 for further details)

Proxy Server Details – Manual Authentication

If your access to EXIGO is via a proxy that requires you to manually authenticate, this information will need to be entered. Please contact your Administrator for further details.

Proxy server username _____

Proxy server password _____

Proxy server domain _____

After completing the required information above, Press START

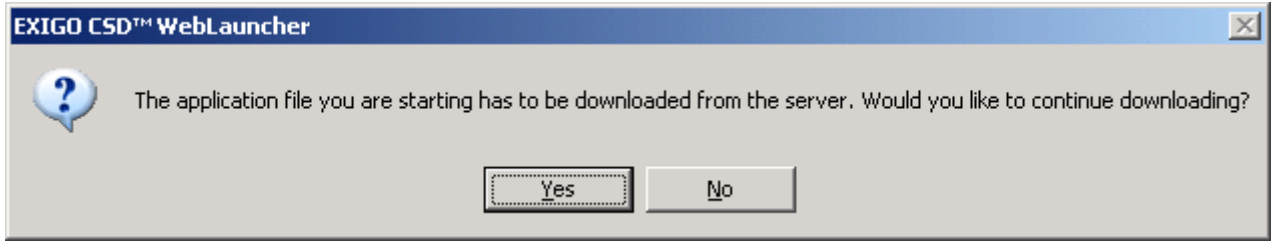
Please note, Exigo does NOT support Automatically Detect Settings in Proxy settings. Please ensure that this functionality is disabled in your proxy settings. This setting can be found on the following menu in internet explorer:

Tools→ Internet Options → Connections → LAN Settings

4) The screen below will appear if:

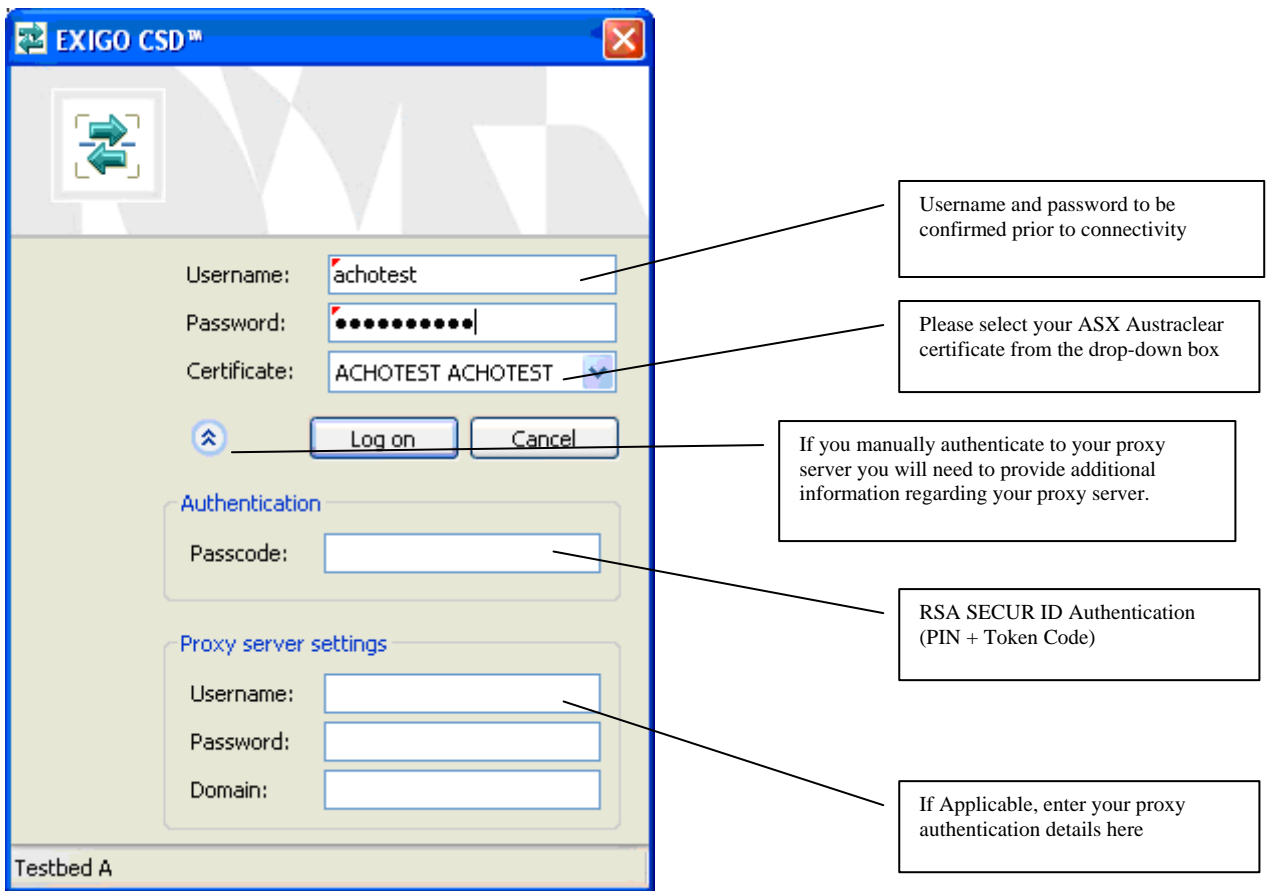
- a) This is the first time your PC has downloaded the current version of the EXIGO GUI
- b) The EXIGO GUI that you are about to download is a new version

Otherwise proceed to Step 5



Press Yes to download.

5) You will now be presented with the EXIGO CSD Login Dialog Box:



PLEASE NOTE: With the exception of point C below (RSA Authentication), all the details that you've entered from the web launcher authentication screen will be carried forward to the EXIGO CSD login.

A) Username and Password

Enter Username and Password, as provided for access to the system

Username _____

Password _____

(Note that the password is case sensitive)



B) Certificate

Please select your ASX Austraclear Digital Certificate from the dropdown box.

C) Authentication

Enter current user credentials

- Passcode, being 4-digit PIN and 6-digit token code (RSA SecurID) e.g. **6451684256**

D) Proxy Server Settings – only if you are required to Manually Authenticate

If your access to the ASX EXIGO is via a proxy that requires you to manually authenticate, this information will need to be entered. Please contact your Administrator for further details.

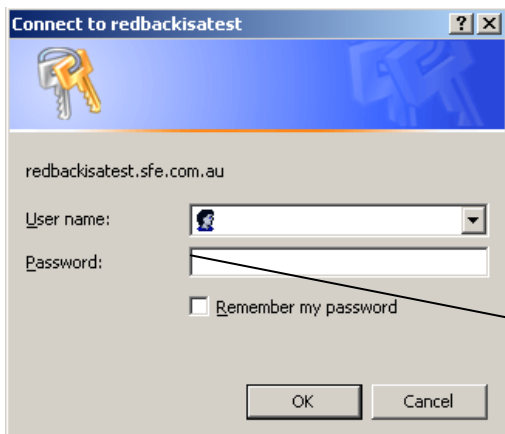
Username _____

Password _____

Domain _____

Proxy Server – Manual Authentication only

If you are required to manually authenticate to your Proxy Server, the following dialog box will be shown during the download process. The appropriate proxy server details will need to be entered – please contact your IT Administrator for further details.

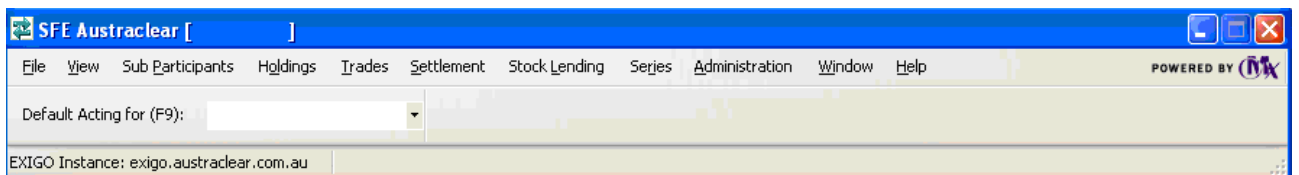


This information is necessary if you are required to **manually authenticate** to your proxy server. Please contact your IT Administrator for further details

(Sample screen shot only)

E) Press “Logon” after completing all the requirements above.

6) The following EXIGO CSD menu bar will appear



You have successfully logged on to the Production EXIGO system.



Trouble Shooting Guide for accessing the ASX Austraclear website

Note. Perform tests on this page ONLY if you cannot view the Exigo webpage. If either of the following tests fails please contact your systems administrator.

For Exigo Production Environment:

Execute a command prompt session:

Start → run → (type) cmd

Type:

nslookup exigoproduct.austraclear.com.au

The output should be as follows:

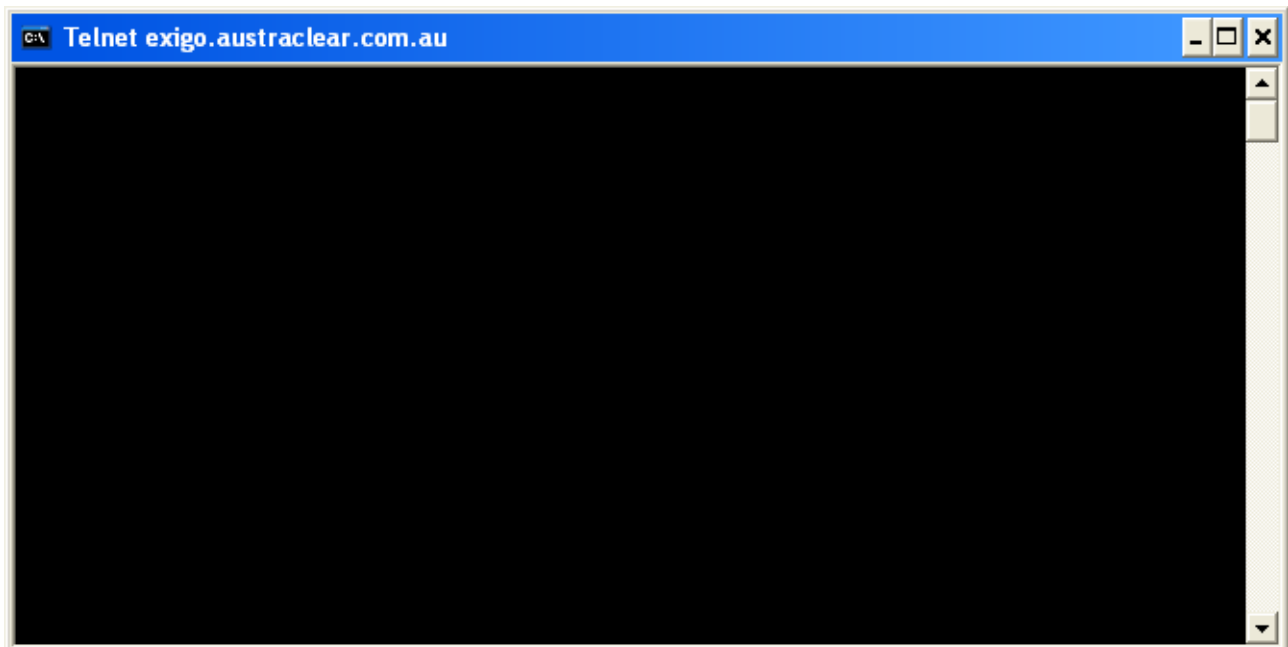
Name: exigoproduct.austraclear.com.au

Address: 203.18.165.220

Or

telnet exigoproduct.austraclear.com.au 443

The output should be as follows:





Appendix 1

Care and Use of your RSA Securid Token

Each time you log in the ASX EXIGO system via an Internet connection, you must authenticate using the unique four digit PIN that has been assigned to you and the six digit code that appears in the display panel of the RSA Securid token.

The six digit code displayed on the RSA Securid Token changes every 60 seconds. The slide bar located on the left side of the display panel indicates how long the code displayed remains current. If the slide displays 5 bars, the code is valid for up to 60 seconds. If the slide bar displays 1 bar or is not visible, the code is about to expire. If the code is about to expire, it is suggested you wait until a new code is generated before attempting to enter the code during the login process.

The authentication process allows users up to 3 authentication attempts before locking out. If you are unsuccessful after the third attempt, please contact ASX Austraclear to request reactivation of your PIN and RSA Securid Token.

Your RSA Securid Token together with the four digit PIN must be kept secure at all times. Without your Token and PIN, you will not be able to access the ASX Austraclear System. Should you misplace your Token or forget your PIN, notify your Password Administrator immediately.