



ASX Austraclear

Software Installation Guide (Test Bed Version)

Internet Connection

File Deployment

June 2009

Information provided is for educational purposes and does not constitute financial product advice. You should obtain independent advice from an Australian financial services licensee before making any financial decisions. Although ASX Limited ABN 98 008 624 691 and its related bodies corporate (“ASX”) has made every effort to ensure the accuracy of the information as at the date of publication, ASX does not give any warranty or representation as to the accuracy, reliability or completeness of the information. To the extent permitted by law, ASX and its employees, officers and contractors shall not be liable for any loss or damage arising in any way (including by way of negligence) from or in connection with any information provided or omitted or from any one acting or refraining to act in reliance on this information. This document is not a substitute for the Operating Rules of the relevant ASX entity and in the case of any inconsistency, the Operating Rules prevail.

© Copyright 2007 ASX Limited ABN 98 008 624 691. All rights reserved 2007.

ASX Limited
ABN 98 008 624 691

20 Bridge Street, Sydney NSW 2000
PO Box H224
Australia Square NSW 1215

Telephone: +61 2 9227 0000
Facsimile: +61 2 9227 0859
Email: info@asx.com.au

Updated: June 2009
Version: 2.1

ASX Austraclear File Deployment Guide – Internet (Test Version)

1 Prerequisites

- Software installation completed.** Please ensure that you have successfully completed the installation of the new Test bed A ASX Austraclear system as documented in the Software Installation Guide before proceeding with logging in to the new system.

- Digital Certificate Enrolment completed.** A client side digital certificate is required to be downloaded and installed prior to logging into the TEST EXIGO system.

Please follow the instructions provided in the Digital Certificate User Enrolment Guide which is published on the ASX Austraclear website,

http://www.sfe.com.au/content/austraclear/operations/exigo/technical/digital_guide.pdf

Please note that your Production Client Side Certificate can be used to log on to the TEST version of EXIGO, provided it matched with your TEST EXIGO user ID.

- RSA token and PIN.** Each user of the new TEST ASX EXIGO System will require the fob in order to access the TEST system via the Internet connection. (See Appendix 1).

Please note that your Production RSA token can be used to log on to the TEST version of EXIGO, provided you will be using the same EXIGO user ID in TEST with that of production.

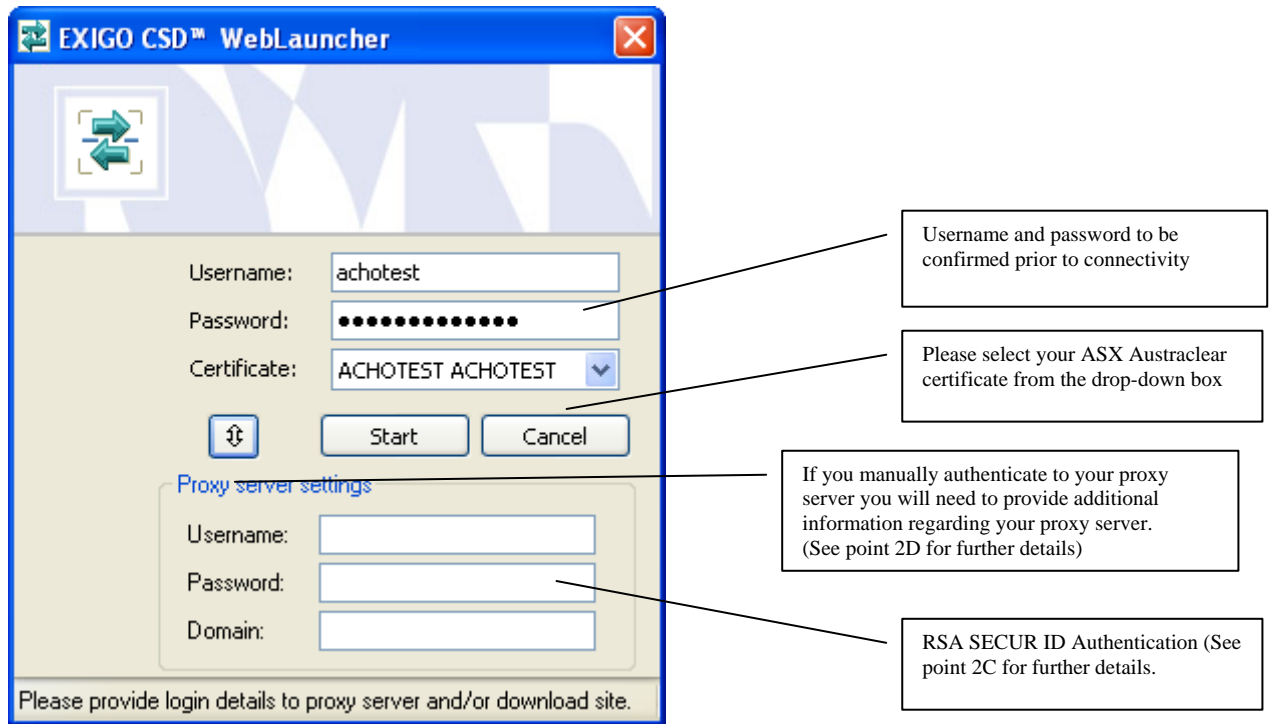
2 File Deployment Procedures

1) Log into the application **

To launch the TEST EXIGO Application either:

- Click on the desktop shortcut (if you have created one) OR;
- Launch the TEST EXIGO System (EXIGO CSD) via the Start Menu:
START->Programs->EXIGO CSD-> **EXIGO CSD @ TESTBED_A_I48_v86-8**

2) You will be presented with the EXIGO CSD Login dialog box.



A) Username and Password

Enter Username and Password as provided for access to the system.

Username _____

Password _____ (Note that the password is case sensitive)

B) Digital Certificates

Please select your ASX Austraclear digital certificate from the drop-down box.

C) RSA authentication

Enter current user credentials

- Passcode, being 4-digit PIN and 6-digit token code (RSA SecurID) e.g. **1234123456**

D) Proxy Server Details – Manual Authentication

If your access to the new Test bed A ASX Austraclear is via a proxy that requires you to manually authenticate, this information will need to be entered. Please contact your Administrator for further details.

Proxy server username _____

Proxy server password _____

Proxy server domain _____

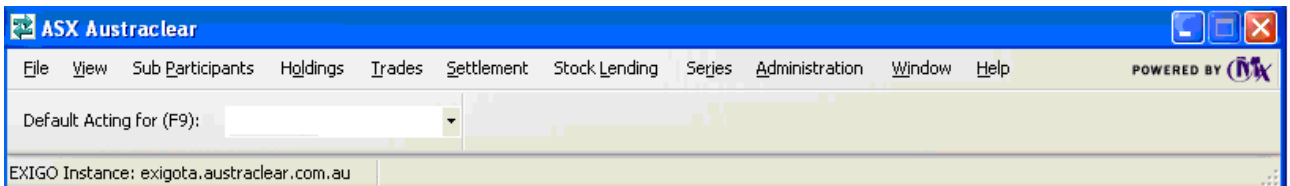
Press Log on after completing all the requirements above.

Please note, Exigo does NOT support Automatically Detect Settings in Proxy settings. Please ensure that this functionality is disabled in your proxy settings. This setting can be found on the following menu in internet explorer:

This setting can be found on the following menu in internet explorer:

Tools→ Internet Options → Connections → LAN Settings

7) The following GUI will appear



You have successfully logged on to the new Test bed A Austraclear system.

3 Next Step

Once you have successfully logged into the TEST EXIGO system, please refer back to your Internet Environment User Guide for further instructions.

Appendix 1

Care and Use of your RSA Securid Token

Each time you log in the ASX EXIGO system via an Internet connection, you must authenticate using the unique four digit PIN that has been assigned to you and the six digit code that appears in the display panel of the RSA Securid token.

The six digit code displayed on the RSA Securid Token changes every 60 seconds. The slide bar located on the left side of the display panel indicates how long the code displayed remains current. If the slide displays 5 bars, the code is valid for up to 60 seconds. If the slide bar displays 1 bar or is not visible, the code is about to expire. If the code is about to expire, it is suggested you wait until a new code is generated before attempting to enter the code during the login process.

The authentication process allows users up to 3 authentication attempts before locking out. If you are unsuccessful after the third attempt, please contact ASX Austraclear to request reactivation of your PIN and RSA Securid Token.

Your RSA Securid Token together with the four digit PIN must be kept secure at all times. Without your Token and PIN, you will not be able to access the ASX Austraclear System. Should you misplace your Token or forget your PIN, notify your Password Administrator immediately.