



ASX Austraclear

Austraclear Software Installation Guide (Test Bed Version)

File Deployment

June 2009

Information provided is for educational purposes and does not constitute financial product advice. You should obtain independent advice from an Australian financial services licensee before making any financial decisions. Although ASX Limited ABN 98 008 624 691 and its related bodies corporate (“ASX”) has made every effort to ensure the accuracy of the information as at the date of publication, ASX does not give any warranty or representation as to the accuracy, reliability or completeness of the information. To the extent permitted by law, ASX and its employees, officers and contractors shall not be liable for any loss or damage arising in any way (including by way of negligence) from or in connection with any information provided or omitted or from any one acting or refraining to act in reliance on this information. This document is not a substitute for the Operating Rules of the relevant ASX entity and in the case of any inconsistency, the Operating Rules prevail.

© Copyright 2007 ASX Limited ABN 98 008 624 691. All rights reserved 2007.

ASX Limited
ABN 98 008 624 691

20 Bridge Street, Sydney NSW 2000
PO Box H224
Australia Square NSW 1215

Telephone: +61 2 9227 000
Facsimile: +61 2 9227 0859
Email: info@asx.com.au

Updated: June 2009
Version: 1.1

ASX TEST Austraclear Software Installation Guide – File Deployment

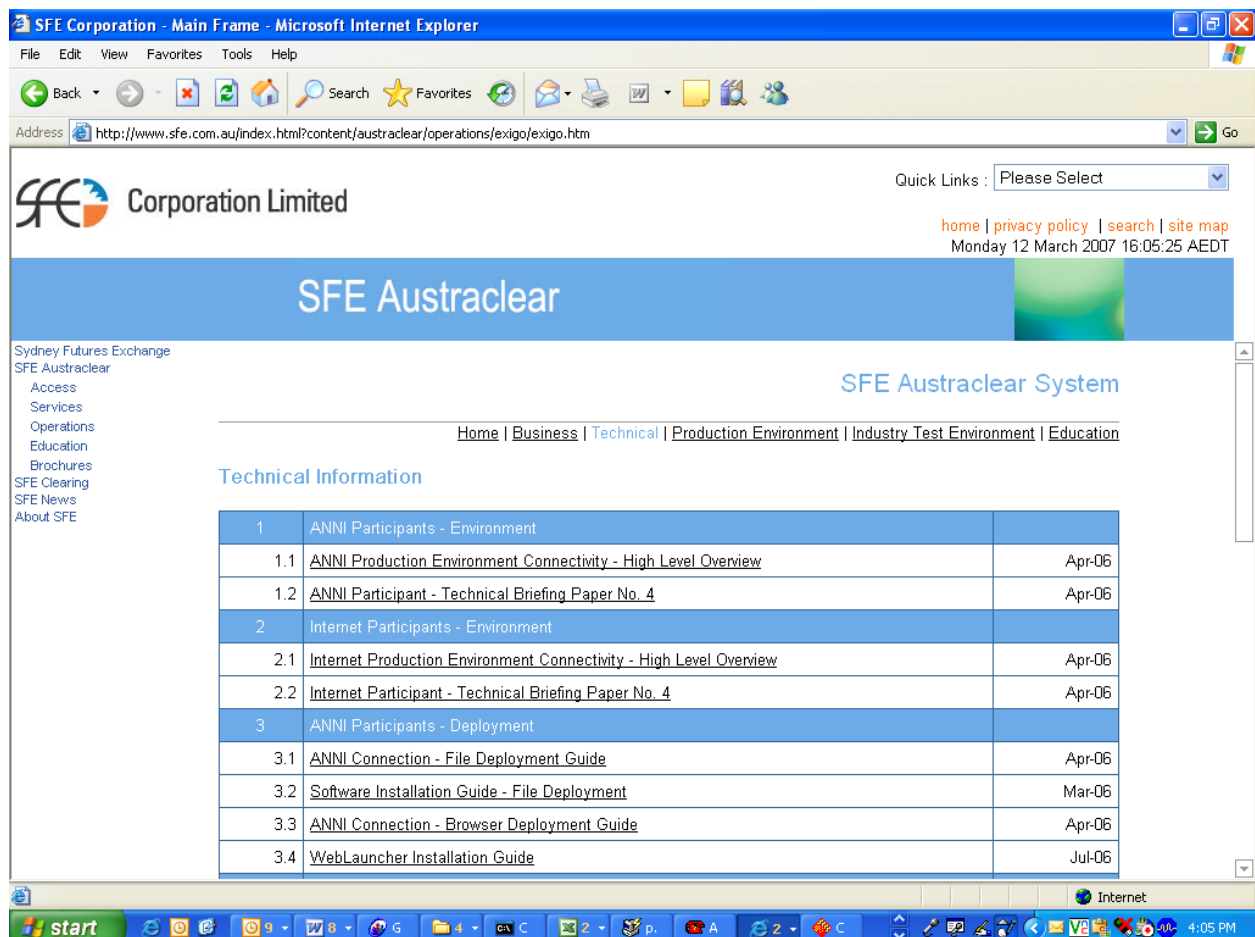
NOTE: To install the new ASX TEST Austraclear system, Administrative rights to the PC are required. The installation may need to be completed by the appropriate IT / PC support staff.

Prerequisites

The Microsoft .Net Framework, version 1.1 sp1 must be installed prior to the installation of the new ASX TEST Austraclear client for the first time. This version can be downloaded from “Links” on the Application Page. This requires administrator privileges.

1 Installing the Software

The new ASX TEST Austraclear installation package is available on the ASX Austraclear System website under: <http://www.sfe.com.au/index.html?content/austraclear/operations/exigo/exigo.htm>, in the Technical Section.



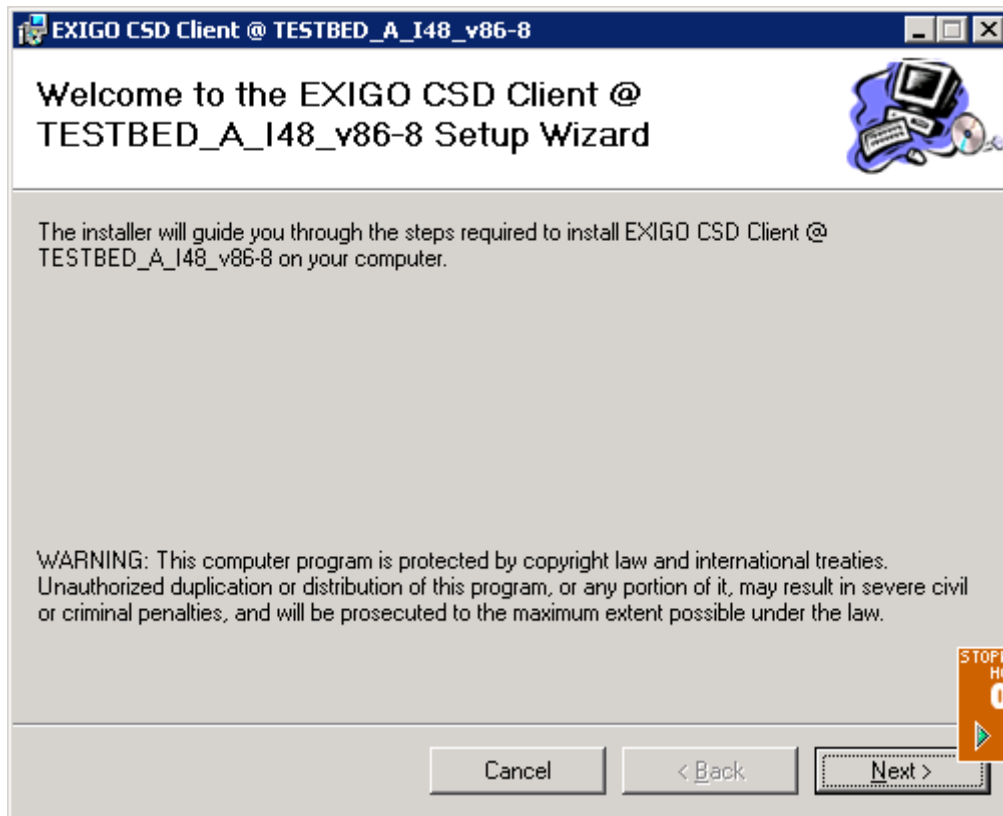
The screenshot shows the SFE Austraclear System website. The main navigation bar includes links for Home, Business, Technical, Production Environment, Industry Test Environment, and Education. The Technical Information section is expanded, showing a table of links for ANNI and Internet Participants.

1	ANNI Participants - Environment	
1.1	ANNI Production Environment Connectivity - High Level Overview	Apr-06
1.2	ANNI Participant - Technical Briefing Paper No. 4	Apr-06
2	Internet Participants - Environment	
2.1	Internet Production Environment Connectivity - High Level Overview	Apr-06
2.2	Internet Participant - Technical Briefing Paper No. 4	Apr-06
3	ANNI Participants - Deployment	
3.1	ANNI Connection - File Deployment Guide	Apr-06
3.2	Software Installation Guide - File Deployment	Mar-06
3.3	ANNI Connection - Browser Deployment Guide	Apr-06
3.4	WebLauncher Installation Guide	Jul-06

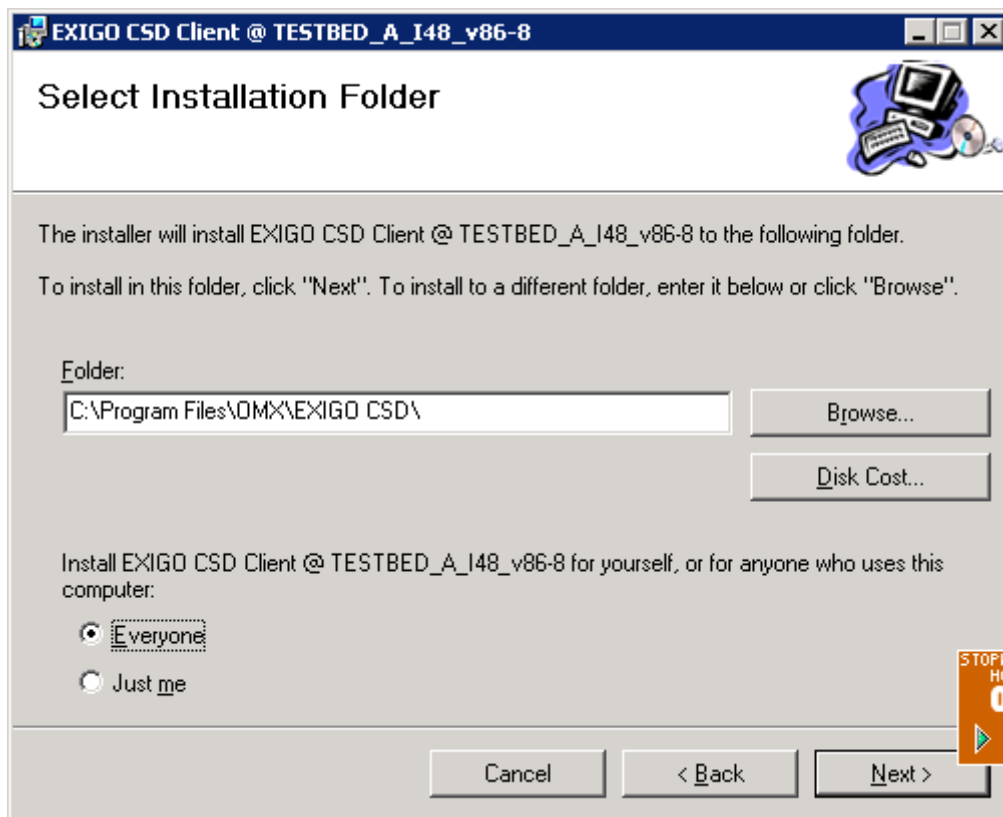
Click on the link [Industry Test Environment Connectivity – Software Package – File Deployment \(.msi\)](#) for the Industry Test Environment to initiate the download of the File Deployment application:

Save the file to the Desktop or to a suitable location on the C:\ Drive.

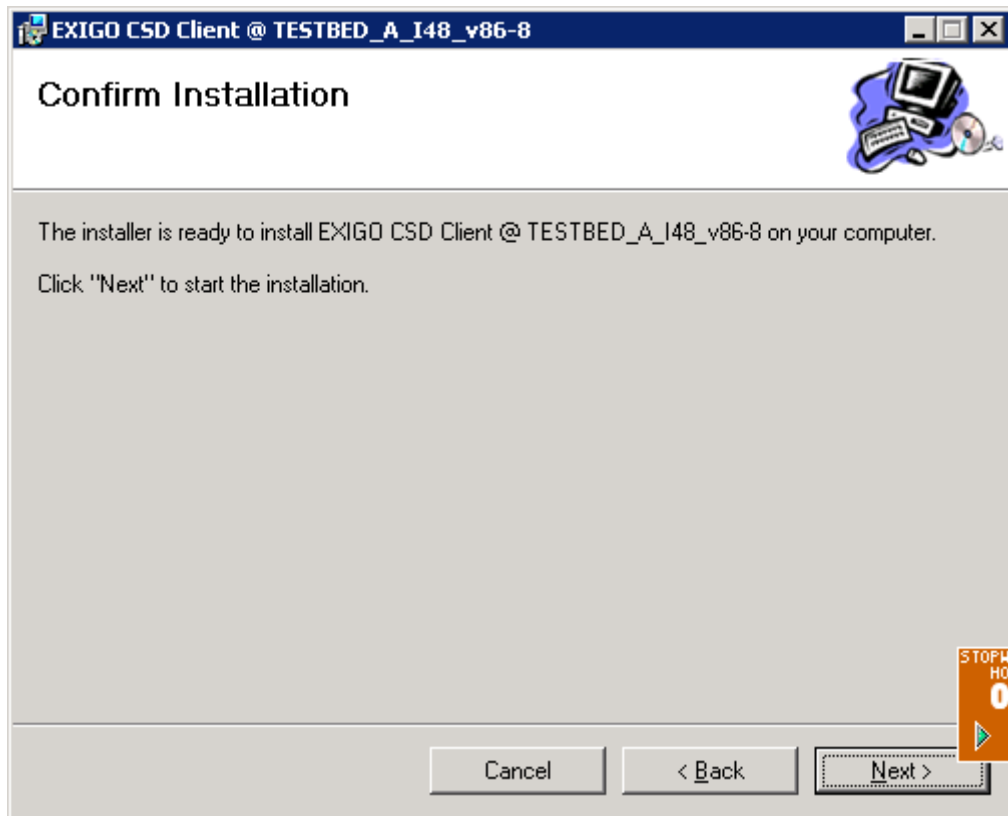
Double Click on the *EXIGOCSD-Testbed_A_I48_v86-8.msi* icon to launch the installation. Click **Next** to proceed with the installation.



Sample Screen



Choose **Everyone**. Keep the default path as: C:\Program Files\DMX\EXIGO CSD\ then click on **Next**



The “Confirm Installation” window will appear, please click on **Next** to install.

Once the Installation Complete window appears, click on **Close**. This confirms a successful installation.

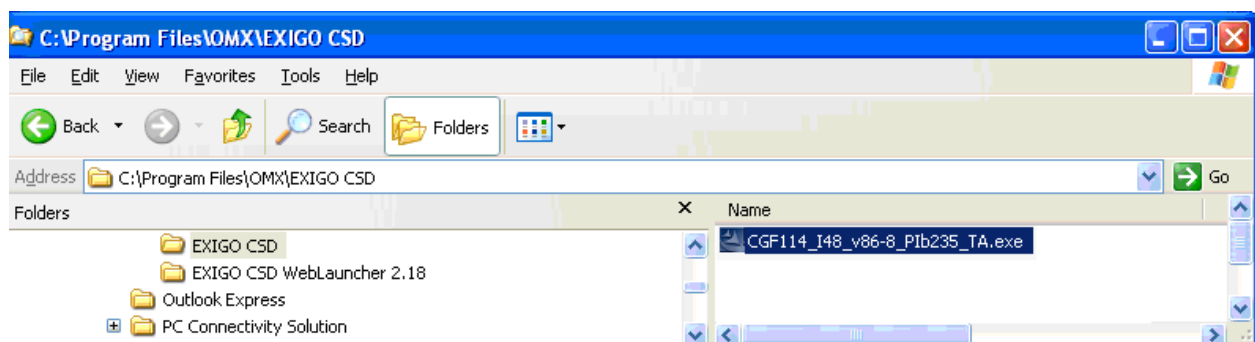
2 Creating a Shortcut

A shortcut should have been automatically created in the Start Menu under:

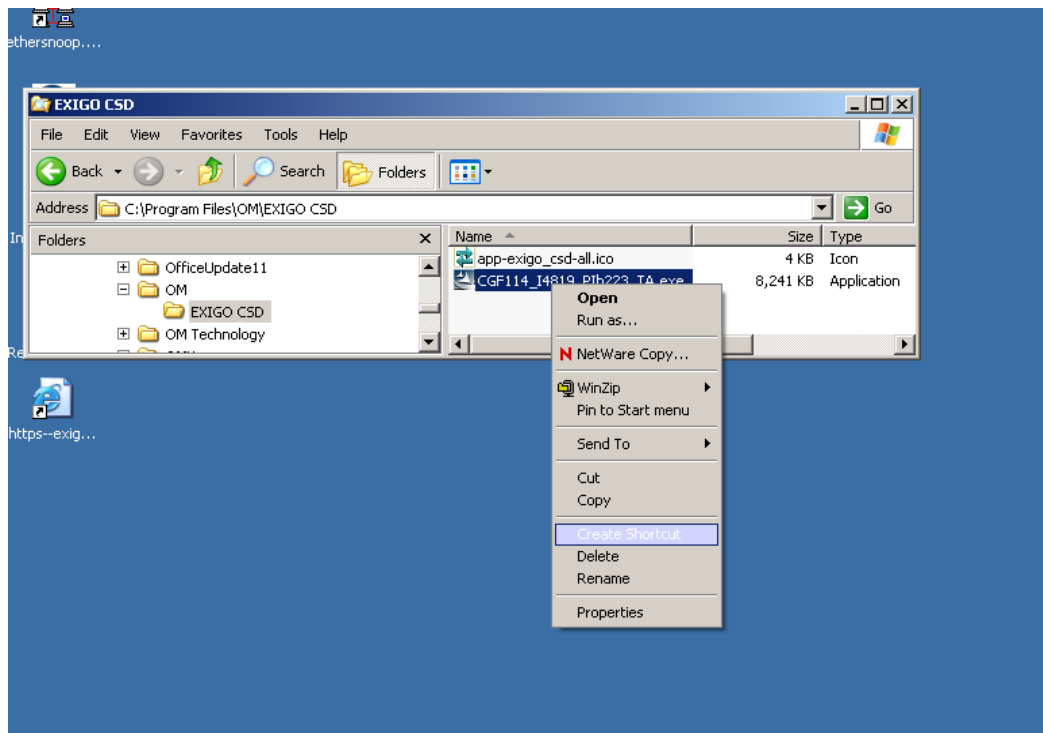
Start → Programs → EXIGO CSD → EXIGO CSD Client @ TESTBED_A_I48_v86-8

We recommend that you create a shortcut on the desktop for easy access to the new system.

Open *Explorer*, and go to C:\Program Files\OM\EXIGO CSD



1. Right Click on the file *CGF****, and select **Create Shortcut**. You can then drag the shortcut onto the desktop, or
2. Windows XP users can also right click on the file, and choose **Pin to Start Menu**. This will put an entry in the *Start* menu.



3 Next Step

Once the software has been successfully installed please proceed onto the appropriate TEST File Deployment Guide – ANNI or Internet.