



ASX

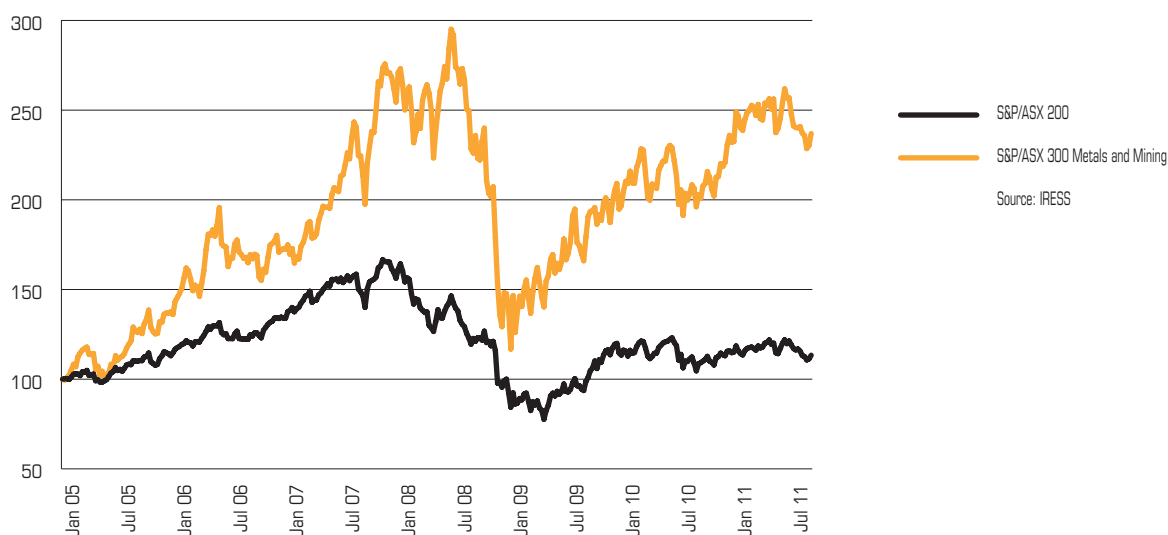
AUSTRALIAN SECURITIES EXCHANGE

Metals and Mining Sector Profile

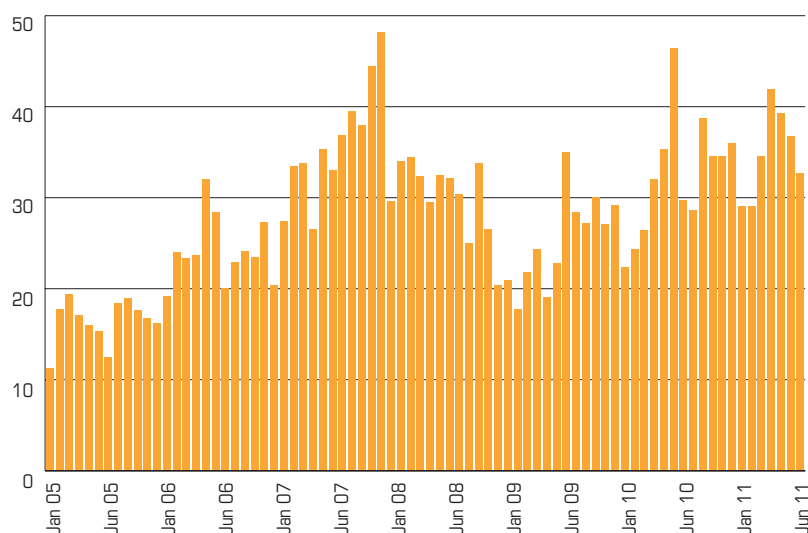
June 2011

The Metals & Mining sector is the largest industry sector by number of companies with almost 700 companies involved in mineral exploration, development and production. The sector comprises several of the world's largest diversified resource companies, including global giants such as BHP Billiton and Rio Tinto, as well as a representation of potential future industry leaders in the mid-tier producers and junior miners. The sector has always been reliant on equity markets to provide capital required for the capital intensive development of mineral projects or the funding of higher risk exploration to locate new deposits. Investors in the Australian market have supported over 400 new junior resource floats in the last 5 years.

S&P/ASX 200 vs S&P/ASX 300 Metals and Mining



Value Traded – Metals and Mining monthly \$billion



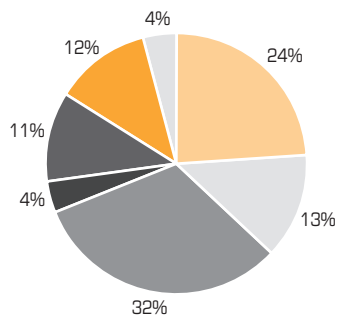
Top 50 Stocks[^]

ASX CODE	COMPANY NAME	MARKET CAP	SECTOR
BHP	BHP Billiton	\$140,562 m	Diversified Energy, Metals & Mining
RIO	Rio Tinto	\$36,164 m	Diversified Energy, Metals & Mining
NCM	Newcrest Mining	\$28,864 m	Gold
FMG	Fortescue Metals Group	\$19,770 m	Iron Ore
AAI	Alcoa Inc	\$12,124 m	Aluminium
ILU	Iluka Resources	\$7,026 m	Mineral Sands
AWC	Alumina	\$5,149 m	Aluminium
OZL	OZ Minerals	\$4,275 m	Copper, Gold
SGM	Sims Metal Management	\$3,625 m	Metals Recycling
LYC	Lynas	\$3,401 m	Rare Earths
AGO	Atlas Iron	\$3,081 m	Iron Ore
OST	Onesteel	\$2,475 m	Steel
ATM	Aneka Tambang	\$2,385 m	Ferronickel, Gold, Silver and Bauxite
PNA	Panaust	\$2,238 m	Copper, Gold
BSL	Bluescope Steel	\$2,220 m	Steel
AQP	Aquarius Platinum	\$2,210 m	Platinum Group Metals
MGX	Mount Gibson Iron	\$1,992 m	Iron Ore
ZIM	Zimplats	\$1,345 m	Platinum Group Metals
MML	Medusa Mining	\$1,240 m	Gold
IGO	Independence Group	\$1,140 m	Nickel, Gold
PRU	Perseus Mining	\$1,114 m	Gold
KCN	Kingsgate Consolidated	\$1,082 m	Gold
RRL	Regis Resources	\$1,070 m	Gold
WSA	Western Areas	\$1,060 m	Nickel
SFR	Sandfire Resources	\$1,053 m	Gold, Base Metals
IVA	Ivanhoe Australia	\$1,005 m	Molybdenum, Base Metals
ASL	Ausdrill	\$998 m	Mining Services
SDL	Sundance Resources	\$976 m	Iron Ore
CGX	CGA Mining	\$946 m	Gold
MRE	Minara Resources	\$871 m	Nickel, Cobalt
MBN	Mirabela Nickel	\$860 m	Nickel
GBG	Gindalbie Metals	\$781 m	Iron Ore
IAU	Intrepid Mines	\$740 m	Gold
AGG	Anglogold Ashanti	\$698 m	Gold
JMS	Jupiter Mines	\$694 m	Gold, Nickel, Uranium
OGC	Oceanagold	\$672 m	Gold
SBM	St Barbara	\$637 m	Gold
GRR	Grange Resources	\$605 m	Iron Ore
NFE	Northern Iron	\$595 m	Iron Ore
ALK	Alkane Resources	\$578 m	Gold
AQG	Alacer Gold Corp.	\$570 m	Gold
RSG	Resolute Mining	\$547 m	Gold
GRY	Gryphon Minerals	\$543 m	Gold, Base Metals
BDR	Beadell Resources	\$529 m	Gold
DML	Discovery Metals	\$527 m	Nickel, Copper
ABY	Aditya Birla Minerals	\$478 m	Copper
MDL	Mineral Deposits	\$474 m	Gold, Mineral Sands
CDU	Cudeco	\$466 m	Copper
OMH	OM Holdings	\$464 m	Manganese, Iron Ore
IMD	Imdex	\$429 m	Mining Services

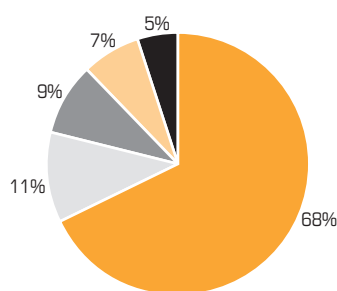
[^] Ranked by market capitalisation. May exclude companies with suspended securities or subject to poor liquidity where mkt cap cannot be determined. BHP and RIO mkt cap excludes DLC securities.

Metals and Mining Market Overview

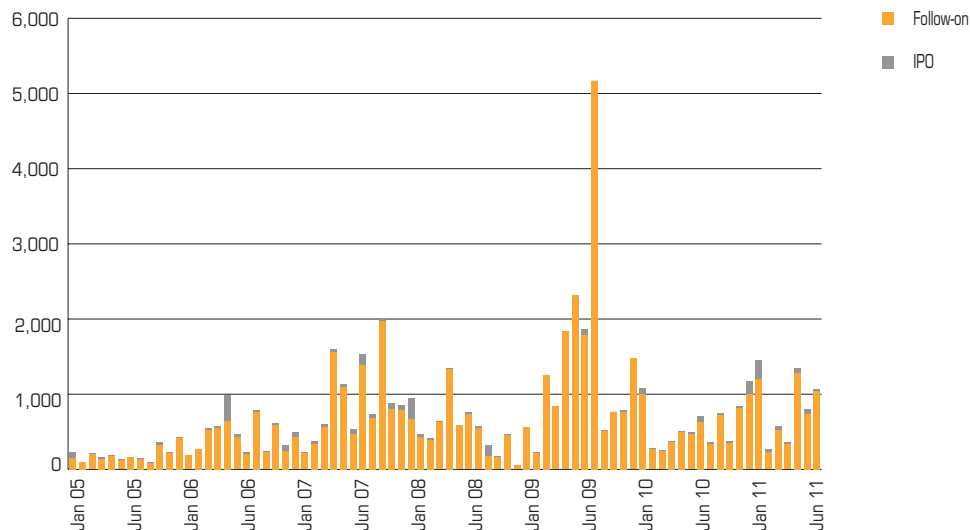
Market capitalisation by industry sector



Number of companies by head office – Metals and Mining



Monthly Equity Capital Raising – Metals and Mining \$million raised



RECENT INITIAL PUBLIC OFFERINGS

ASX CODE	COMPANY NAME	CAPITAL LISTED, \$M
ALD	Allied Gold	\$257.9
RFV	Rift Valley Resources	\$13.3
EXC	Exterra Resources	\$11.8
NXR	Nemex Resources	\$8.5
GGB	GGG Resources Plc	\$8.1
NRR	Naracoota Resources	\$5.8
MRQ	MRQ Metals	\$5.6
CNO	Conto Resources	\$4.5
ERD	Exalt Resources	\$3.5
DMI	Dempsey Minerals	\$2.8

TOP SUBSEQUENT ISSUERS FY11

ASX CODE	COMPANY NAME	CAPITAL RAISED, \$M
NCM	Newcrest Mining	\$8,865.1
AGO	Atlas Iron	\$1,224.8
IGO	Independence Group	\$650.4
KRL	Kangaroo Resources	\$501.8
EQN	Equinox Minerals	\$358.8
JMS	Jupiter Mines	\$356.7
KCN	Kingsgate Consolidated	\$338.6
IVA	Ivanhoe Australia	\$269.2
GBG	Gindalbie Metals	\$208.7
IRN	Indophil Resources	\$189.8



Disclaimer: Independent advice from an Australian financial services licensee is needed before making financial decisions. This is not intended to be financial product advice. ASX Limited ABN 98 008 624 691 and its related bodies corporate and their respective directors, employees, agents, servants and boards accept no responsibility for any person acting on or relying on any opinion, advice or information and, to the extent permitted by law, disclaim all liability for any loss howsoever caused (including by reason of negligence) and for any errors, omissions, defects or misstatements (whether negligent or otherwise) contained in this publication.

© Copyright 2011 ASX Limited ABN 98 008 624 691. All rights reserved 2011.

Exchange Centre, 20 Bridge Street, Sydney NSW 2000 Telephone: 131 279 www.asx.com.au

For these products the market is operated by ASX Limited ACN 008 624 691



ASX

AUSTRALIAN SECURITIES EXCHANGE

11-07