



# PRECIOUS METAL RESOURCES LIMITED

**Precious Metal Resources Limited**  
ACN 145 105 148

Level 2, 131 Macquarie Street  
Sydney NSW 2000  
Tel: +61 2 9251 7177  
Fax: +61 2 9251 7500

## Contact

Michael Leu  
Managing Director

Email: [mleu@pmrl.com.au](mailto:mleu@pmrl.com.au)

## Latest News

[www.pmrl.com.au](http://www.pmrl.com.au)

## Directors / Officers

John Dawkins AO  
Non-Executive Chairman

John Foley  
Non-Executive Deputy Chairman

Michael Leu  
Managing Director

Peter Kennewell  
Chief Geologist

Rado Jacob Rebek  
Non-Executive Director  
Senior Geologist

Bruce Dennis  
Non-Executive Director

Peter Meers  
Non-Executive Director

**ASX Symbol: PMR**

## JORC STATEMENT

The information in this report that relates to mineral exploration is based on information compiled by Peter John Kennewell, who is a member of the Australasian Institute of Mining and Metallurgy. Peter John Kennewell is a director of Precious Metal Resources Limited, and has sufficient experience which is relevant to the style of mineralisation and type of deposit under consideration and to the activity which he is undertaking to qualify as a competent person as defined in the 2012 Edition of the "Australasian Code for Reporting of Exploration Results, Identified Mineral Resources, and Ore Reserves". Peter John Kennewell consents to the inclusion in this report of the matters based on his information in the form and context in which it appears.

**All widths are down hole widths, true widths are unknown**

## QUARTERLY ACTIVITIES REPORT

This quarterly operations report is dated 31 January 2014 and is for the three months ending 31<sup>st</sup> December 2013.

### Corporate

- Peel Fault 70% Farm-In Agreement replaced with 100% Acquisition Agreement
- 10 million shares and 3.15 million, 30 cent, options were released from escrow on 6 December 2013 (ASX: 21/11/13).

During the quarter, PMR acquired the Peel Fault Gold Project from Gossan Hill Gold Limited (**Gossan Hill**), an 87% owned subsidiary of Sovereign Gold) by issuing 2 million shares to Gossan Hill. (ASX: 18/11/3). The project area is located in northeastern NSW near Tamworth.

The Peel Fault Gold Project (ELs 6648, 7725, 7726, 7862, 7863, 8161, 8211 and ELAs 4859 and 4897) is focused on a major gold-bearing geological suture separating sedimentary rocks in the Tamworth Trough on the west from Ordovician and Cambrian deep ocean floor volcanics and sedimentary rocks to the east, including a suite of extensively serpentinised ultramafic rocks adjacent to the fault.

The shares issued to Gossan Hill, pursuant to the agreement, are escrowed pending PMR shareholders approving the acquisition pursuant to Listing Rule 10.9.2. A general meeting will be held in March 2014 to consider the acquisition.

### Community and Landholder Liaison Program

PMR published its Community and Landholder Liaison Program on its website at <http://www.pmrl.com.au/cllp>. The site includes detailed maps showing the location of PMR's tenements.

### Exploration

During the quarter PMR commenced a six hole drilling program at Halls Peak to determine the nature, grade and extent of mineralisation shipped directly, without processing, to a local smelter during the 1950s and 60s.

Significant results from the program were received in January 2014 and reported on 3 and 15 January 2014.

In summary:

#### PMR DDH HP 026

- **37.2 metres (downhole) at an average grade of 8.7% zinc, 3.0% lead, 1.4% copper and 85 g/t (2.8 oz/t) silver, over 4 bands**
  - Including **10.5 metres at an average grade of 9.81% zinc, 5.63% lead, 2.67% copper and 196 g/t (6.3 oz/t) silver**
  - Including **1.48 metres (from 1.62 to 3.1m) at an average grade of 19.2% zinc, 10.7% lead, 5.66% copper and 509 g/t (6.3 oz/t) silver**

Four beds of mineralisation totalling **37.2 metres at an average grade of 8.7% zinc, 3.0% lead, 1.4% copper and 85 g/t (2.8 oz/t)**

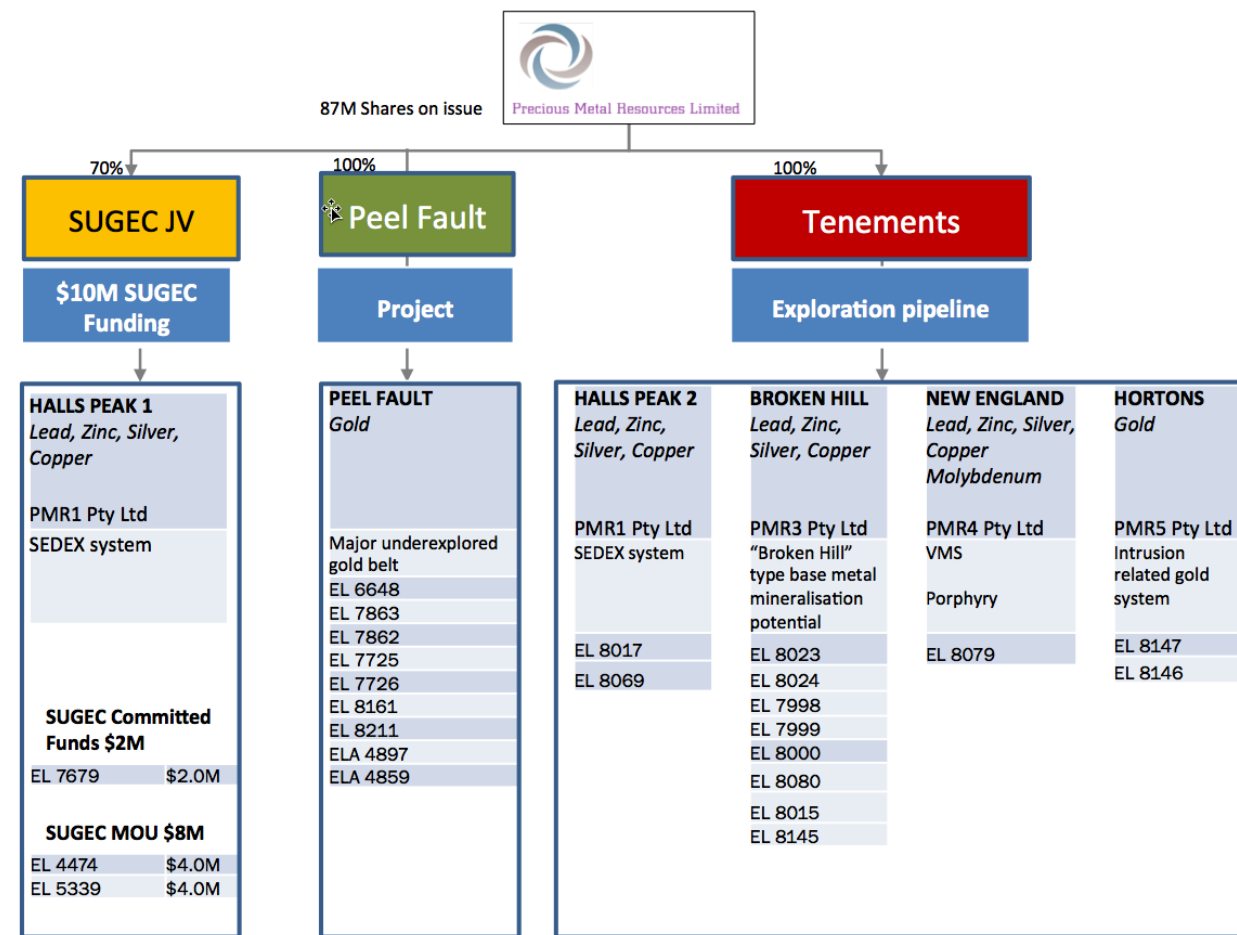
silver have been intersected in the first hole drilled by PMR at Gibsons Mine, Halls Peak (DDH HP 026). Only small bands of unmineralised rock separate these beds.

**DDH HP 027**

- Four base metal zones identified in HP 026, also intersected in HP027, separated by 10-20m
- Underlying silver zone also encountered, but at much higher grade (3.5m @ 949 g/t, including 1.6m @ 1,900 g/t)
- Suggests mineralised beds of SEDEX origin, as modelled

Four base metal mineralised zones and an underlying silver bearing zone were found to be continuous between holes DDH HP 026 (ASX, 3/1/14) and DDH HP 027, separated by 10 to 20 metres. Each zone has similar thickness and comparable metal contents. The zones are dipping steeply at this location, and their dip and outcrop direction will be determined when results of the next hole drilled, DDH HP 028 are received and processed.

**PMR Asset Portfolio**



For personal use only

Tenement information required under LR 5.3.3

Tenement No.	Location
<b>New South Wales</b>	
EL 4474	Halls Peak
EL 5339	Halls Peak
EL 8017	Halls Peak
EL 8069	Halls Peak
EL 7679*	Halls Peak
EL 7998	Broken Hill
EL 7999	Broken Hill
EL 8000	Broken Hill
EL 8015	Broken Hill
EL 8023	Broken Hill
EL 8024	Broken Hill
EL 8080	Broken Hill
EL 8145	Broken Hill
EL 8079	Bundarra
EL 8147	Timbarra
EL 8146	Timbarra
EL 6648+	Peel Fault
EL 7863+	Peel Fault
EL 7862+	Peel Fault
EL 7725+	Peel Fault
EL 7726+	Peel Fault
EL 8161+	Peel Fault
EL 8211+	Peel Fault
ELA 4897	Peel Fault
ELA 4859	Peel Fault
<b>Disposed of in Quarter</b>	
EL 8016	Broken Hill
EL 8018	Broken Hill
EL 7996	Cangai
EL 7997	Moonbi

**Notes:**

\* Subject to Farm-in, 70% interest held by PMR at the end of the December Quarter

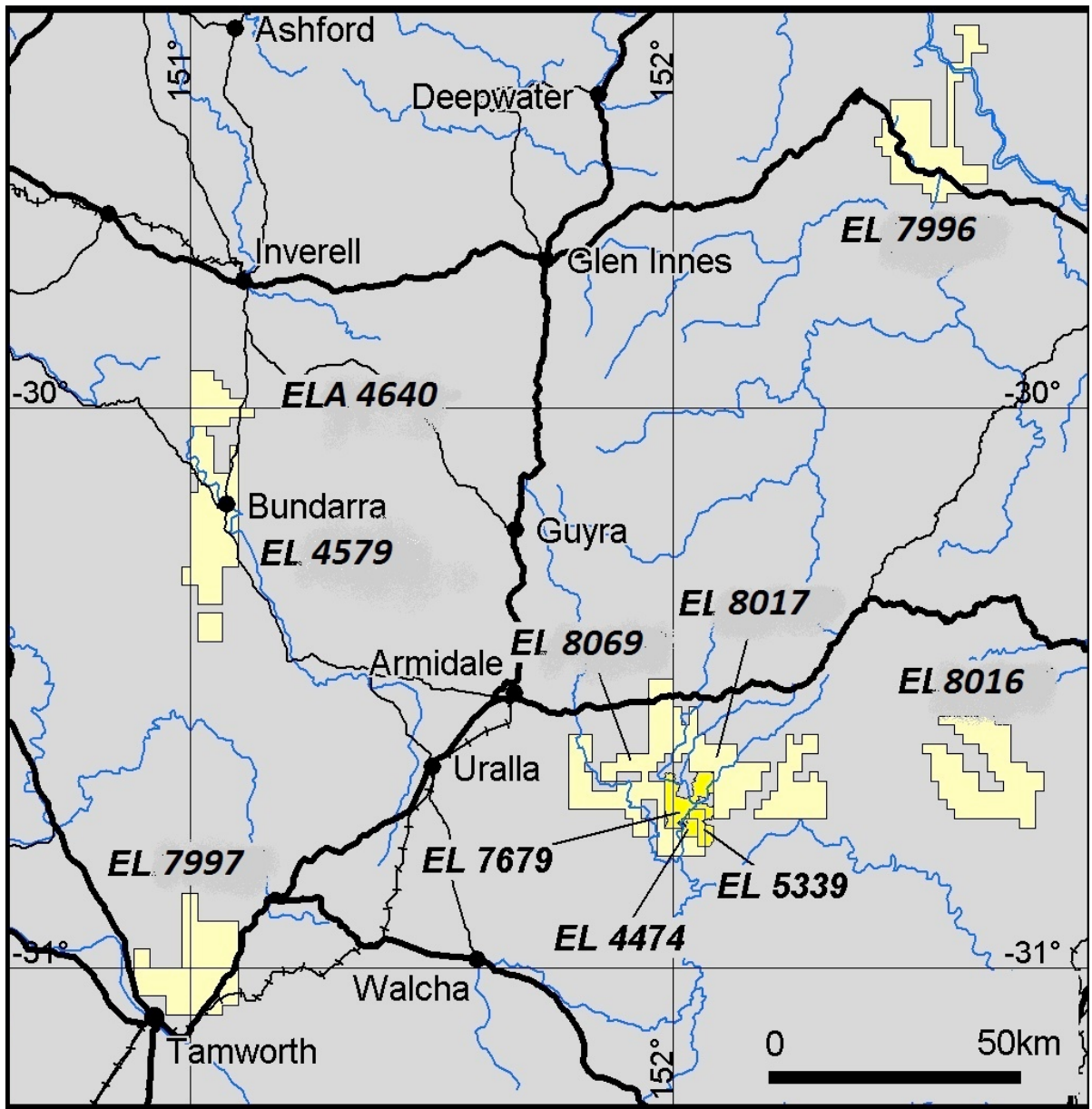
+ Acquired during the quarter

There has been no change in beneficial percentage interests in farm-in or farm-out agreements acquired or disposed of during the quarter.

For personal use only



# PRECIOUS METAL RESOURCES LIMITED



Location map of principal PMR (Armidale) licences and applications

For personal use only