



AUSTRALIAN BAUXITE LIMITED

ASX: ABX

ASX ANNOUNCEMENT

22 September 2014

ABx – First Mining Lease Granted at Bald Hill Tasmania

Australian Bauxite Limited (ASX: ABX) has been granted its first mining lease, ML1961 at its Bald Hill Project in Northern Tasmania.

The Honourable Paul Harriss, Minister for Resources, Tasmania has today granted the mining lease.

The Development Proposal and Environmental Management Plan was lodged with the Environmental Protection Agency and is being sent to local councils to be advertised and placed on public display for 28 days. Once this process is concluded, a Development Approval can be granted and the operations can commence. Operations are expected to commence late 2014.

ABx has delineated 2 further mines in northern Tasmania at Fingal Rail & DL-130 prospect (ASX 14&15/5/14) – see Figure 1. ABx also has extensive bauxite resources throughout Eastern Australia – see Figure 3.

Spearheading the development of the Tasmanian projects is Leon Hawker, ABx's Chief Operating Officer, who said:

“This is the first new bauxite mine in Australia for over 35 years and will introduce a new bauxite supply into the seaborne bauxite market.

“We look forward to continuing and further developing the relationships that have been built in Tasmania. I particularly wish to acknowledge the work undertaken and the support of the Mineral Resources Tasmania, a division of the Department of State Growth and the EPA and recognise the strong community support we enjoy.

“ABx can only operate with a strong social licence and however modest our contribution to local jobs, industry and the economy may be, we will make every effort to meet the expectations of our diverse stakeholders.”

For further information please contact:

Ian Levy, CEO

Telephone: +61 (0) 407 189 122

AUSTRALIAN BAUXITE LIMITED

ACN 139 494 885

Level 2 131 Macquarie Street Sydney NSW 2000

p: +61 2 9251 7177

f: +61 2 9251 7500

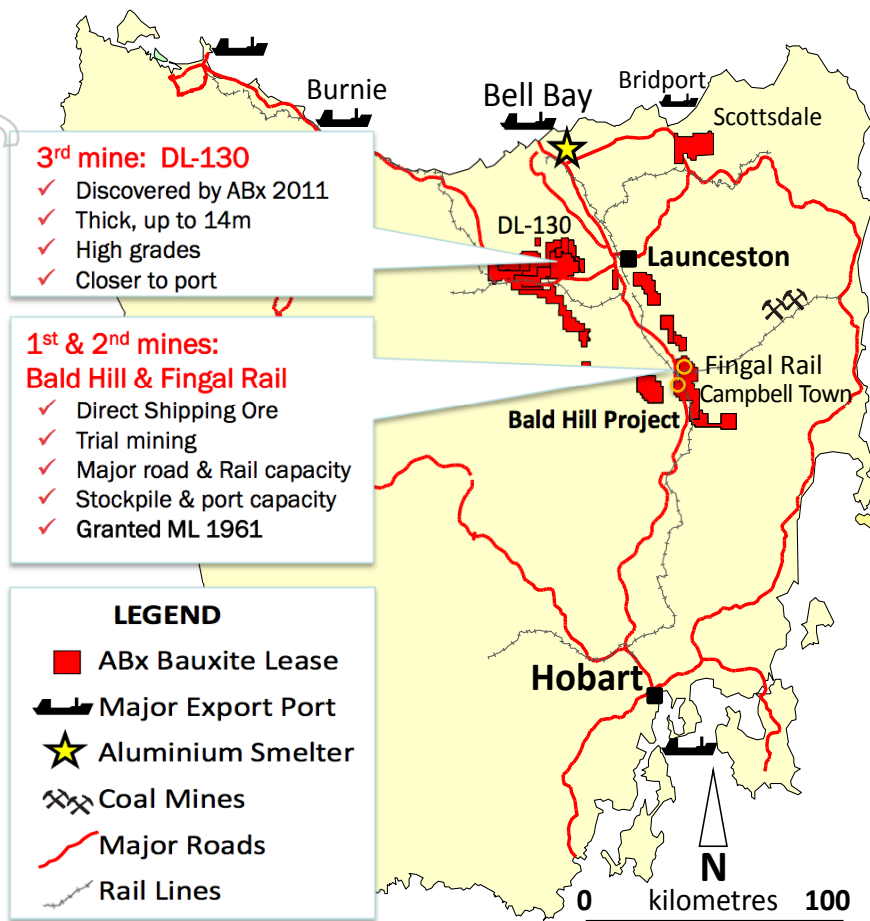
w: australianbauxite.com.au

e: corporate@australianbauxite.com.au

For personal use only



ASX: ABX



Bell Bay Export Port

100 km by Road or Rail



Bulk test pits & bulk samples

Figure 1: Locations of Projects and Infrastructure in Tasmania

About Australian Bauxite Limited ASX Code ABX

Australian Bauxite Limited (ABx) is establishing its first mine in Tasmania and holds the core of the Eastern Australian Bauxite Province. ABx's 37 bauxite tenements in Queensland, New South Wales & Tasmania covering 5,029km² were rigorously selected for (1) good quality bauxite; (2) near infrastructure connected to export ports; & (3) free of socio-environmental constraints.

All tenements are 100% owned, unencumbered & free of 3rd- party royalties. See Figure 3

ABx's discovery rate is increasing as its technology & expertise grows.

The Company's bauxite is gibbsite trihydrate bauxite with low silica contamination & can be processed into alumina at low temperature – the type in short-supply globally.

ABx has declared Mineral Resources at Inverell & Guyra in northern NSW, Taralga in southern NSW, Binjour in central QLD & in Tasmania confirming that ABx has discovered significant bauxite deposits including some of outstandingly high quality.

The Company's first bauxite mine at Bald Hill, Tasmania is targeted for production in late 2014.

ABx aspires to identify large bauxite resources in the Eastern Australian Bauxite Province, which is emerging as a globally significant bauxite province. ABx has created significant bauxite developments in 3 states - Queensland, New South Wales & Tasmania. Its bauxite deposits are favourably located for direct shipping of bauxite to both local & export customers.

ABx endorses best practices on agricultural land, strives to leave land & environment better than we find it. We only operate where welcomed.

Directors / Officers

Paul Lennon	Chairman	Ian Levy	CEO & MD
Ken Boundy	Director	Henry Kinstlinger	Secretary
Kon Tsiakas	Director	Julian Rockett	Secretary

For personal use only

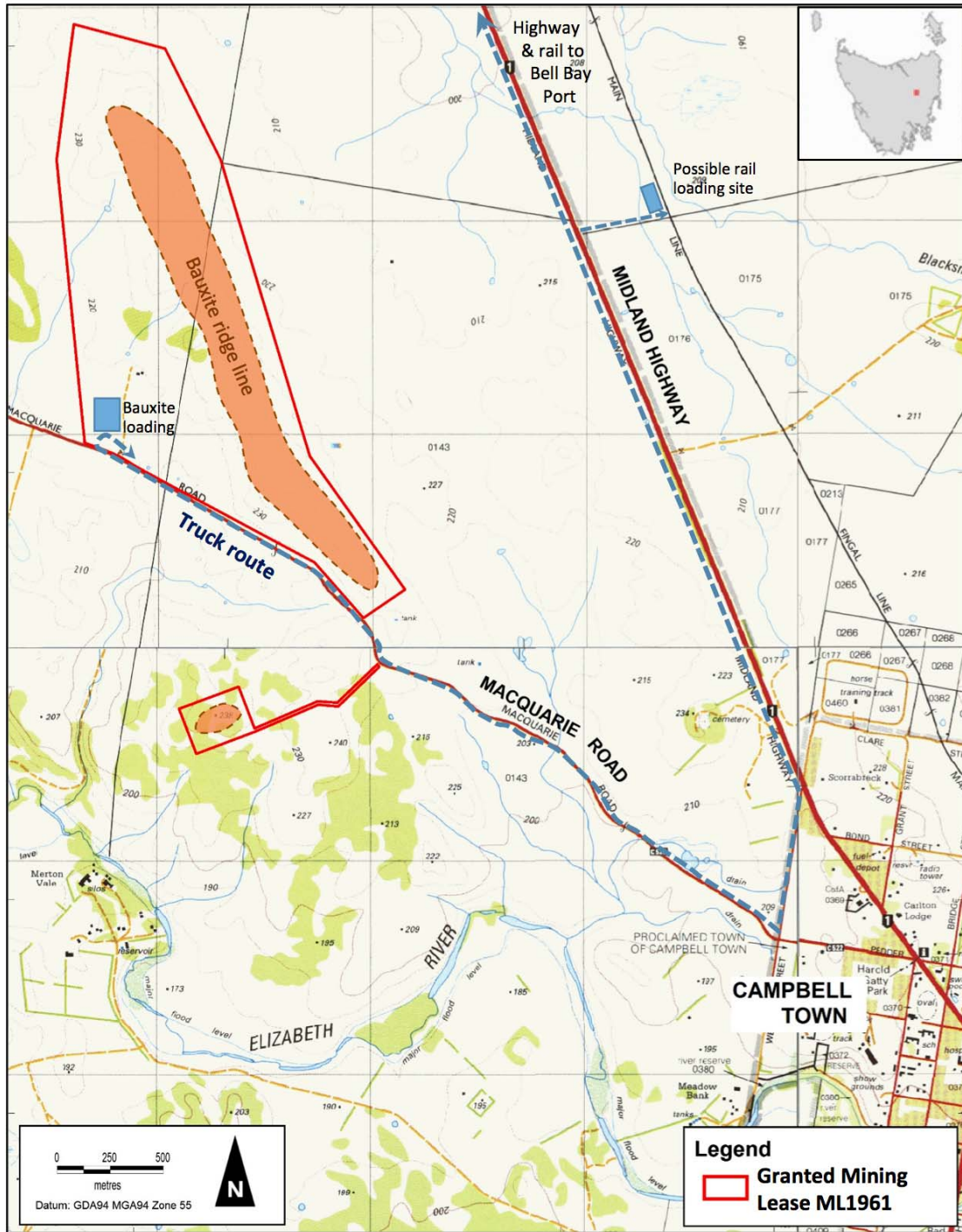


Figure 2: Bald Hill Mining Lease ML1961, Campbell Town, Tasmania



Figure 3: ABx Project Tenements and Major Infrastructure

For personal use only