



## AUSTRALIAN BAUXITE LIMITED

ASX: ABX

## ASX ANNOUNCEMENT

5 December 2014

### About Australian Bauxite Limited ASX Code ABX

Australian Bauxite Limited (ABx) is establishing its first mine in Tasmania and holds the core of the Eastern Australian Bauxite Province. ABx's 37 bauxite tenements in Queensland, New South Wales & Tasmania covering 5,029km<sup>2</sup> were rigorously selected for (1) good quality bauxite; (2) near infrastructure connected to export ports; & (3) free of socio-environmental constraints.

All tenements are 100% owned, unencumbered & free of 3<sup>rd</sup> party royalties.

ABx's discovery rate is increasing as its technology & expertise grows.

The Company's bauxite is gibbsite trihydrate bauxite with low silica contamination & can be processed into alumina at low temperature – the type in short supply globally.

ABx has declared Mineral Resources at Inverell & Guyra in northern NSW, Taralga in southern NSW, Binjour in central QLD & in Tasmania confirming that ABx has discovered significant bauxite deposits including some of outstandingly high quality.

The Company's first bauxite mine at Bald Hill, Tasmania is targeted for production in late 2014.

ABx aspires to identify large bauxite resources in the Eastern Australian Bauxite Province, which is emerging as a globally significant bauxite province. ABx has created significant bauxite developments in 3 states - Queensland, New South Wales & Tasmania. Its bauxite deposits are favourably located for direct shipping of bauxite to both local & export customers.

**ABx endorses best practices on agricultural land, strives to leave land & environment better than we find it.**

**We only operate where welcomed.**

#### Directors / Officers

Paul Lennon	Chairman
Ian Levy	CEO & MD
Ken Boundy	Director

Henry Kinstlinger	Company Secretary
Julian Rockett	Company Secretary

### Bald Hill – Environmental Assessment Completed

Australian Bauxite Limited (ABx) advises that the EPA Director has concluded his assessment of Australian Bauxite's Bald Hill bauxite mine in northern Tasmania.

The following is the EPA's advice.

*Australian Bauxite Limited proposed to develop a bauxite mine involving the extraction and screening of up to 650,000 tonnes (375,000 cubic metres) per year of bauxite from land within a mining lease approximately five kilometres northwest of Campbell Town.*

*The mining will involve shallow quarrying of surface deposits on agricultural land.*

*Under delegation from the EPA Board, EPA Director Alex Schaap has decided the mine could be developed and managed in an environmentally sustainable and acceptable manner, with certain conditions.*

*"I gave consideration to various environmental issues, particularly the potential for noise impact to residences arising from product transport, and the disturbance to threatened flora species," Mr. Schaap said.*

*"To ensure early morning or late evening traffic from the proposed mine does not disturb residences along the transport route, a restriction was placed on the time haulage trucks may enter and exit the mine site."*

*"The area has been heavily disturbed by agricultural cultivation and grazing but a few areas of the mine site are inhabited by the threatened species, knotty speargrass, and are to be fenced off to minimise the potential for any disturbance," Mr. Schaap said.*

*The proposal does not present the risks of water contamination often seen with mining proposals because the operations will not intersect groundwater and the rocks in the area are not prone to acidic drainage. Issues of sedimentation of surface waters are dealt with through conditions on drainage management and dust suppression.*

*Mr. Schaap said one public representation was received in relation to the permit application, which was submitted in 22 September 2014. Public consultation was open for a 28 day period commencing 27 September 2014. The representation was supportive of the proposal.*

*The proposal was considered by the Director in the context of the sustainable development objectives of the Resource Management and Planning System of Tasmania (RMPS), and in the context of the objectives of the Environmental Management and Pollution Control System (EMPCS) established by the EMPC Act.*

## AUSTRALIAN BAUXITE LIMITED

ACN 139 494 885

Level 2 131 Macquarie Street Sydney NSW 2000

p: +61 2 9251 7177

f: +61 2 9251 7500

w: [australianbauxite.com.au](http://australianbauxite.com.au)

e: [corporate@australianbauxite.com.au](mailto:corporate@australianbauxite.com.au)



ASX: ABX

The functions of the Board are to administer and enforce the provisions of the Act, and in particular to use its best endeavours to protect the environment of Tasmania, and to further the RMPS and EMPCS objectives.

The Director, under delegation from the EPA Board, undertook the assessment of the proposal in accordance with the Environmental Impact Assessment Principles defined in Section 74 of the EMPC Act.

The Director's environmental assessment, including the environmental conditions that must be included in any permit, have been forwarded to the Northern Midlands Council, for review of planning issues prior to making a decision as to whether a permit is to be granted.

For more information about the proposal and the Director's assessment, go to <http://epa.tas.gov.au/assessment>.

### **Mine start-up in Tasmania is imminent**

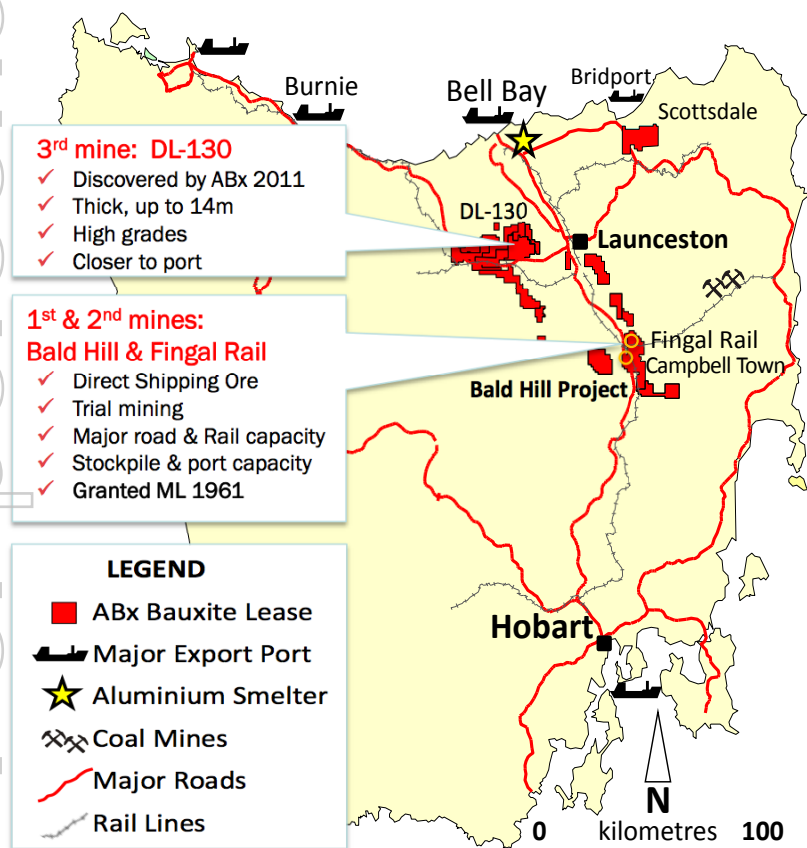
Final regulatory approval from Northern Midlands Council is expected on schedule in early December and contractors are mobilised to commence operations at Bald Hill, immediately thereafter.

Plans for Tasmanian mining lease applications at Fingal Rail and DL-130 are well advanced.

### **For further information please contact:**

Ian Levy, CEO,  
Australian Bauxite Limited

Telephone: +61 2 9251 7177  
Mobile: +61 407 189 122



100 km by Road or Rail



Figure 1: Locations of Projects and Infrastructure in Tasmania

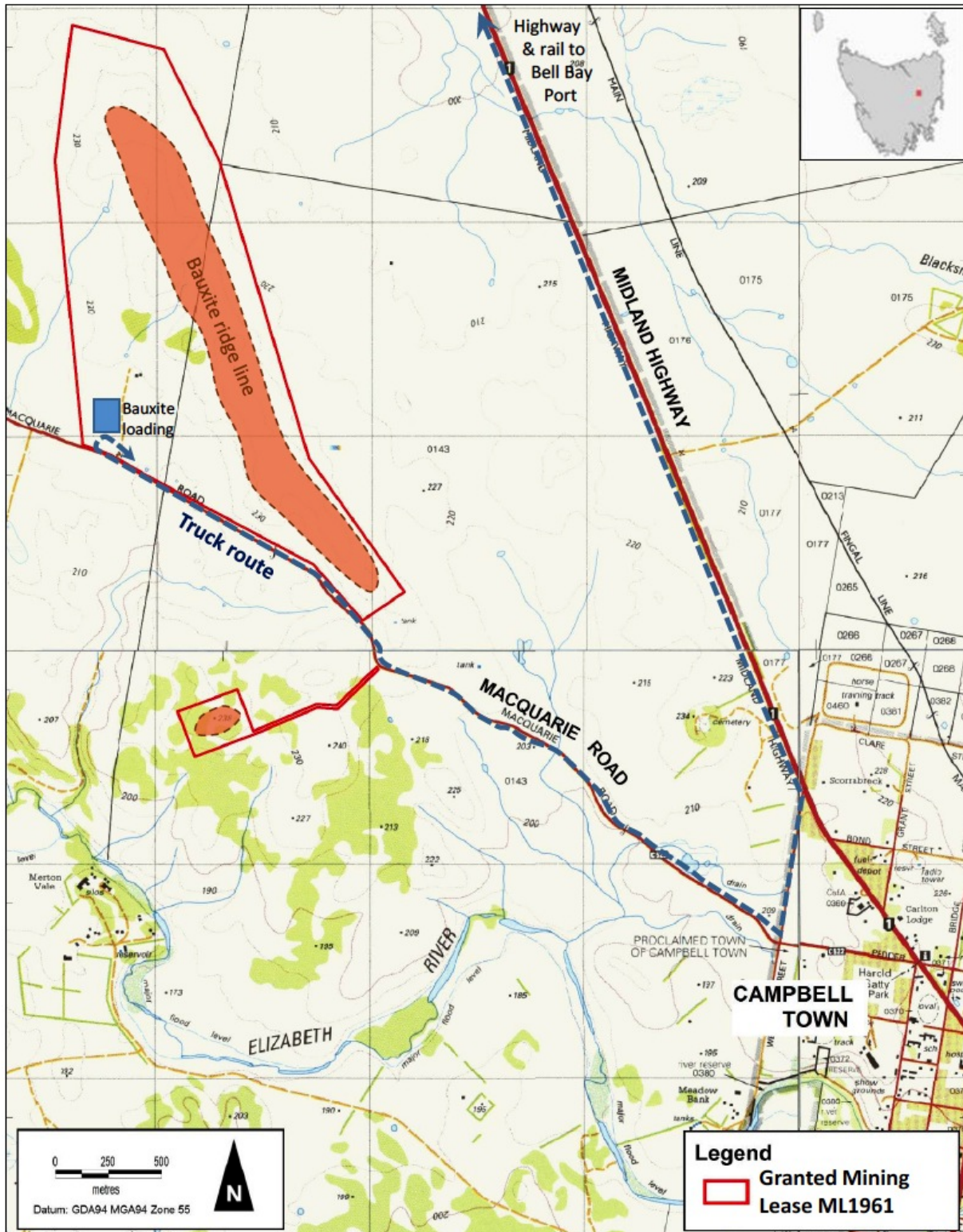


Figure 2: Bald Hill Mining Lease ML1961, Campbell Town, Tasmania



