

ASX Announcement

Wednesday, 8 April 2015

ASX: WPL
OTC: WOPEY

Woodside Petroleum Ltd.
ACN 004 898 962
Woodside Plaza
240 St Georges Terrace
Perth WA 6000
Australia
www.woodside.com.au

GAS DISCOVERY AT PYXIS-1

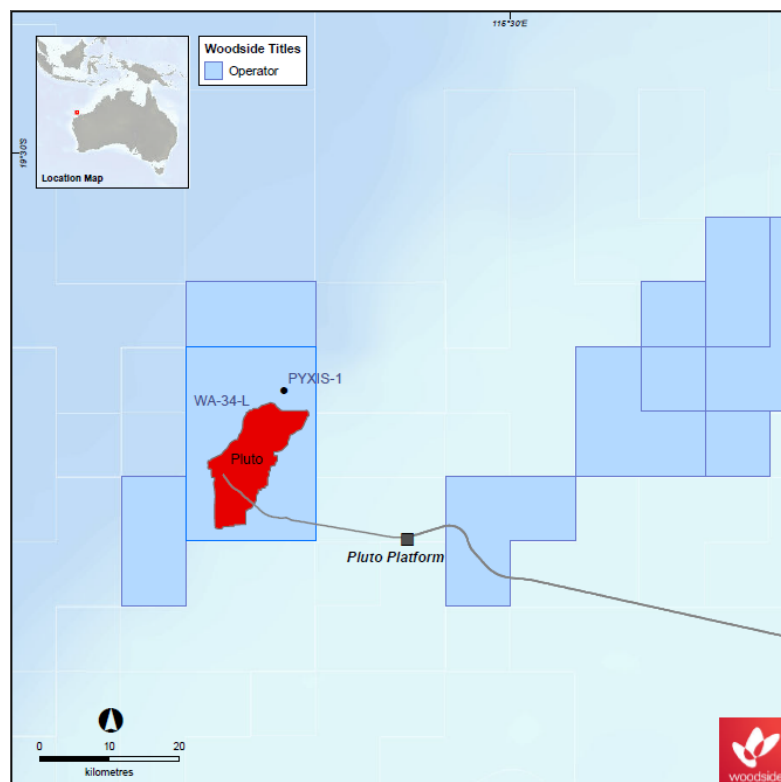
Woodside advises that the Pyxis-1 exploration well in production licence WA-34-L has intersected approximately 18.5 metres of net gas within the Jurassic sandstone target.

The well reached a total depth of 3347 metres. Wireline logging has confirmed the discovery through the recovery of gas samples to surface and establishment of a gas pressure gradient.

Woodside Executive Vice President Global Exploration Philip Loader said: "Given its location, this successful exploration outcome offers future tie-back potential to Woodside's existing Pluto infrastructure."

Pyxis-1 is located in Production Licence WA-34-L, within Western Australia's Dampier Sub-Basin and is located approximately 15 km north of Woodside's producing Pluto Gas Field infrastructure.

Woodside Burrup Pty. Ltd. is the operator and 90% equity owner of WA-34-L. Kansai Electric Power Australia Pty. Ltd. and Tokyo Gas Pluto Pty. Ltd. each hold 5% equity.



Contacts:

MEDIA

Michelle Grady
W: +61 8 9348 5995
M: +61 418 938 660
E: michelle.grady@woodside.com.au

INVESTORS

Craig Ashton
W: +61 8 9348 6214
M: +61 417 180 640
E: investor@woodside.com.au

For personal use only