



## ASX Announcement

18 January 2018

### COMPANY DETAILS

Davenport Resources Limited

ABN: 64 153 414 852

ASX CODE: DAV

PRINCIPAL AND  
REGISTERED OFFICE  
(& Postal Address)

Davenport Resources Limited  
Level 28,  
303 Collins Street  
Melbourne VIC 3000

W: [www.davenportresources.com.au](http://www.davenportresources.com.au)

E: [info@davenportresources.com.au](mailto:info@davenportresources.com.au)

P: +61 (0) 415 065 280

### Capital Structure

74.3M Ordinary shares  
33.85M First milestone shares  
33.85M Second milestone shares  
6.2M Unlisted options

### BOARD OF DIRECTORS

**Patrick McManus**  
(Non-Executive Chairman)

**Chris Bain**  
(Managing Director)

**Rory Luff**  
(Non-Executive Director)

**Chris Gilchrist**  
(Non-Executive Director)

## Davenport seeks JORC verification for potash resources

### HIGHLIGHTS:

- **Leading consultant engaged to review historic potash resources on German Mining Licences**
- **Initiative aimed at achieving JORC 2012 compliance for significant resources at Ebeleben and Mühlhausen-Nohra**
- **Results expected in March 2018 quarter**

Davenport Resources (ASX: DAV) ("Davenport", "the Company") is pleased to announce it has engaged leading mineral industry consultancy Micon International to undertake a review of historic exploration data from the Ebeleben and Mühlhausen-Nohra potash Mining Licences in Germany's South Harz Basin.

The primary objective of the review, and subsequent geological modelling, will be to establish resource estimates for both projects that comply with the 2012 edition of the Joint Ore Reserves Committee (JORC) Code, which governs the reporting of mineral resources to the Australian Securities Exchange.

Davenport acquired the perpetual Mining Licences for Ebeleben, Mühlhausen-Nohra and another project area, Ohmgebrige, from German government agency Bodenverwertungs-und-verwaltungs (BVVG) in October 2017.

In November 2017, following analysis of the extensive exploration data inherited as part of the acquisition by consultant ERCOSPLAN, Davenport announced historic resources for both Ebeleben and Mühlhausen-Nohra.

The historic sylvinite resource at Ebeleben, which was calculated in accordance with the Russian Federation System applicable at that time in the former German Democratic Republic (GDR) system, is **356 million tonnes at 16.1% K<sub>2</sub>O (57.4 million tonnes of contained K<sub>2</sub>O)**, equivalent to 91 million tonnes of potassium chloride (KCl) (*ASX announcement 15 November 2017*).

At Mühlhausen-Nohra, the Mühlhausen sub-area contains an historic resource of **234 million tonnes at 14.4% K<sub>2</sub>O (33.8 million tonnes of contained K<sub>2</sub>O)** in hartsalz and **54.4 million tonnes at 10.6% K<sub>2</sub>O (5.8 million tonnes of contained K<sub>2</sub>O)** in carnallite. (*ASX announcement 16 November 2017*).

Micon has expertise in reviewing historic resources estimated under the former GDR system and using the original data to model the resource and where possible compile a resource estimate compliant with the JORC 2012 Code.

Davenport Managing Director Chris Bain said: *“The quality of data collected from Ebeleben and Mühlhausen-Nohra over several drilling campaigns dating back to the 1970s gives us confidence that we will soon be able to declare JORC-compliant inferred resources for both projects.”*

*“To achieve this without needing to undertake further drilling will be a tremendous boost to Davenport’s plans to return the South Harz Basin to its former glory as one of the main potash-producing regions of the world. This will reduce development time, and costs, significantly”*

Micon is expected to deliver the findings of its review in the March 2018 quarter.

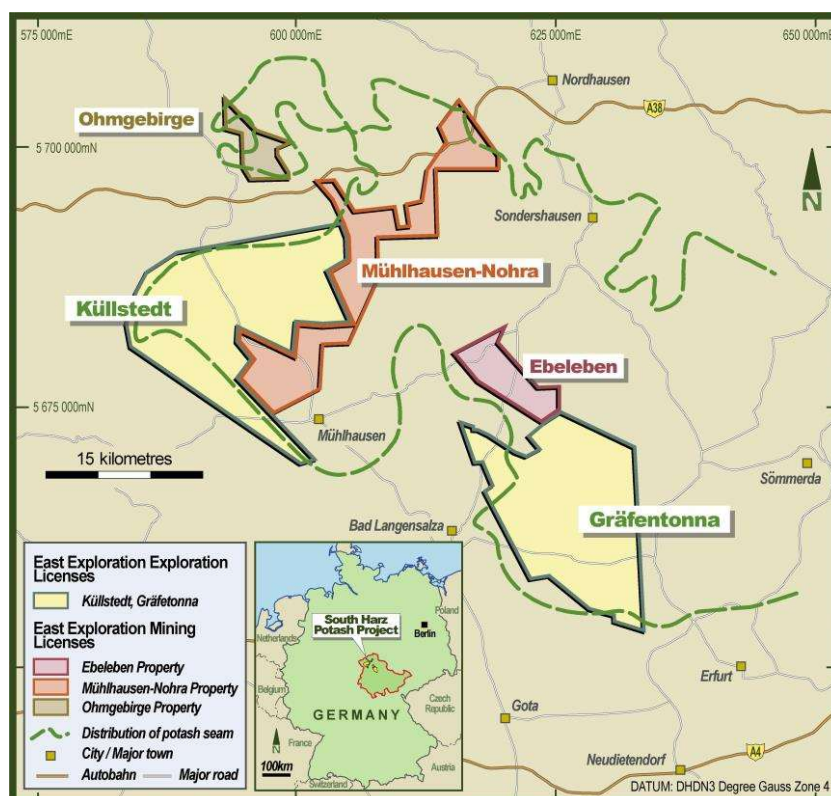


Figure 1: Location of South Harz project tenements, Germany

#### INVESTOR & MEDIA ENQUIRIES

Chris Bain - Managing Director  
Davenport Resources Ltd  
+61 (0) 413 275 756  
[cbain@davenportresources.com.au](mailto:cbain@davenportresources.com.au)

Luke Forrestal - Account Director  
Media & Capital Partners  
+61 (0) 411 479 144  
[luke.forrestal@mcpartners.com.au](mailto:luke.forrestal@mcpartners.com.au)

For personal use only