

19 October 2018

ASX Announcements Office
152–158 St Georges Terrace
Perth WA 6000
Australia

DRILLING UPDATE - KITOTOLO-KATAMBA LITHIUM PROJECT



Figure 1: Phase 1 RC Drilling at the Kitotolo-Katamba Lithium Project in the DRC

- ***Phase 1 AC/RC drilling program advancing at the Kitotolo-Katamba Lithium Project progressing well with 3,200m of drilling completed to date***
- ***70 shallow holes completed to date targeting lithium mineralisation hosted in LCT pegmatites, defined by the Company's earlier trenching and test pitting work***
- ***Passive seismic survey work ongoing and being used to assist in targeting pegmatites beneath cover***
- ***Phase 1 drilling program proposed to comprise ~15,000m of reverse circulation drilling and a subsequent program of ~1,000m of diamond drilling***
- ***First batch of drilling samples is being prepared for dispatch to Lubumbashi for sample preparation and then on to Johannesburg for assay***

Force Commodities Ltd (**Force** or the **Company**) (ASX Code: 4CE) is pleased to provide an update on the Phase 1 RC drilling program that is underway at its Kitotolo-Katamba Lithium Project located in Tanganyika Province in the south east of the Democratic Republic of Congo (**DRC**).

The Kitotolo-Katamba Lithium Project Joint Venture is located just 45km immediately south west of AVZ Mineral's 'world-class' Manono Lithium Project licenses and 33km west of the Company's Kanuka Lithium Production JV Project.

The Kitotolo-Katamba Lithium Project comprises Exploration License PR 12453 and Mining License PE 13247, and extends over an area of approx. 400km². Force holds a 70% interest in the joint venture together with DRC State-owned mining company La Congolaise d'Exploitation Minière (**Cominiere SA**).

Kitotolo-Katamba Lithium Project AC/RC and Diamond Drilling

The Phase 1 RC drilling program at Kitotolo-Katamba is proposed to consist of 152 holes for ~15,000m.

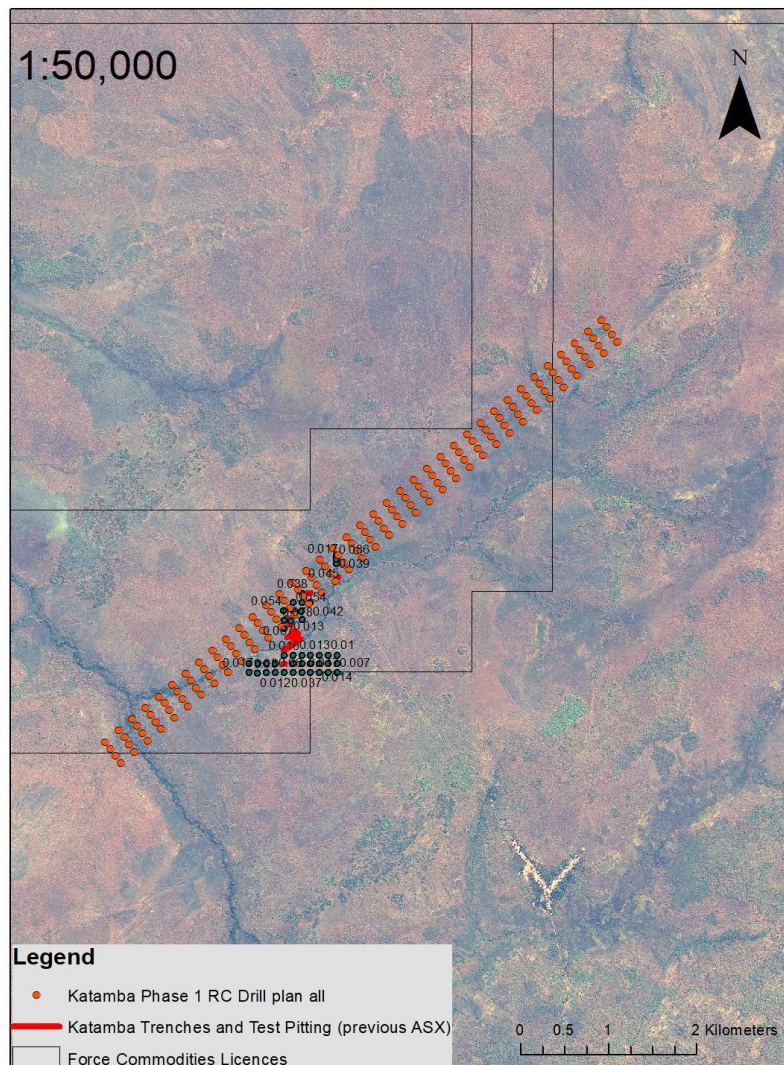


Figure 2: Planned Phase 1 RC drill program.

The planned drill-hole locations and depths can be expected to change according to observations of down-hole geology.

For personal use only

A 1,000m diamond drilling program is proposed to commence after the results of the Phase 1 RC ~drilling program have been received and interpreted.

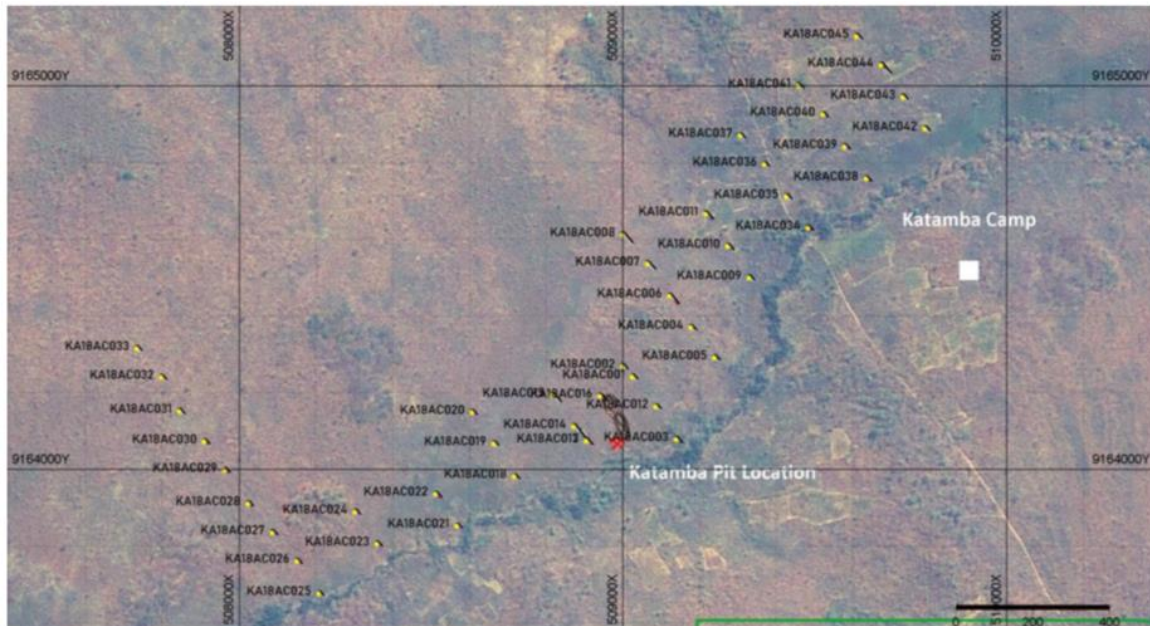


Figure 3: Completed Phase 1 RC Drilling at the Kitotolo-Katamba Lithium Project in the DRC

To date, 70 shallow holes for a total of ~3,200m have been completed.



Figure 4: Phase 1 RC Drilling at the Kitotolo-Katamba Lithium Project in the DRC

The Phase 1 drilling program at the Kitotolo-Katamba Lithium Project, is initially designed to comprise shallow (40-60m) drilling rapidly target near surface lithium mineralisation, along strike, hosted within exposed LCT pegmatites, which was defined by the Company's previous trenching and test pitting work.

Further deeper AC/RC drilling will follow the initial shallow drilling program, targeting depth extensions of the anticipated shallow intercepts.

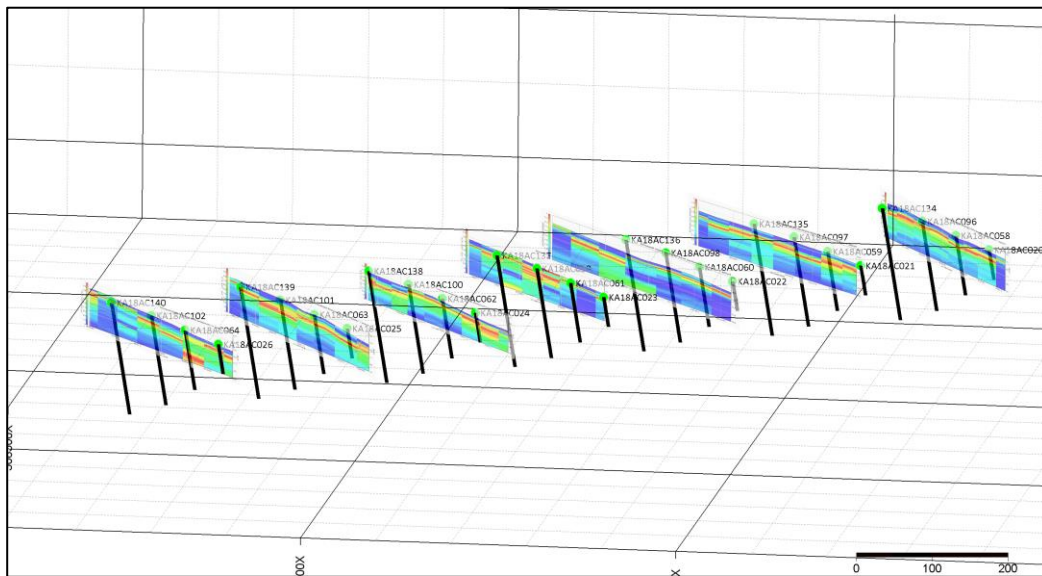


Figure 5: Completed Passive Seismic Lines (Lines 71-77) with Phase 1 RC drilling

Passive Seismic survey (Tromino) work has been ongoing and is being used to assist in targeting the pegmatites beneath the cover. A Perth-based geophysics consultancy group has been engaged by the Company to process the raw data, interpret the datasets and advise on targeting of drill holes.

The first batch of drilling samples is being prepared for dispatch to Lubumbashi for sample preparation and then on to Johannesburg for assay.

END

For further information contact:

Jason Brewer
Managing Director
Force Commodities Limited
Tel: +61 (0) 8 6462 1421

Competent Person Statement

The information in this release that relates to sampling techniques and data, exploration results, geological interpretation and Exploration Targets, Mineral Resources or Ore Reserves has been compiled by Mr James Sullivan is a member of the Australian Institute of Geoscientists. Mr Sullivan is engaged by Force Commodities as a fulltime employee of Force Commodities Ltd.

Mr Sullivan has sufficient experience of relevance to the styles of mineralisation and the types of deposits under consideration, and to the activities undertaken, to qualify as a Competent Person as defined in the 2012 Edition of the Joint Ore Reserves Committee (JORC) Australasian Code for Reporting of Exploration Results, Mineral Resources and Ore Reserves. Mr Sullivan consents to the inclusion in this report of the matters based on information in the form and context in which it appears.

Forward looking statements

Information included in this release constitutes forward-looking statements. Often, but not always, forward looking statements can generally be identified by the use of forward looking words such as “may”, “will”, “expect”, “intend”, “plan”, “estimate”, “anticipate”, “continue”, and “guidance”, or other similar words and may include, without limitation, statements regarding plans, strategies and objectives of management, anticipated production or construction commencement dates and expected costs or production outputs.

Forward looking statements inherently involve known and unknown risks, uncertainties and other factors that may cause the Company’s actual results, performance and achievements to differ materially from any future results, performance or achievements. Relevant factors may include, but are not limited to, changes in commodity prices, foreign exchange fluctuations and general economic conditions, increased costs and demand for production inputs, the speculative nature of exploration and project development, including the risks of obtaining necessary licences and permits and diminishing quantities or grades of reserves, political and social risks, changes to the regulatory framework within which the company operates or may in the future operate, environmental conditions including extreme weather conditions, recruitment and retention of personnel, industrial relations issues and litigation.

Forward looking statements are based on the Company and its management’s good faith assumptions relating to the financial, market, regulatory and other relevant environments that will exist and affect the Company’s business and operations in the future. The Company does not give any assurance that the assumptions on which forward looking statements are based will prove to be correct, or that the Company’s business or operations will not be affected in any material manner by these or other factors not foreseen or foreseeable by the Company or management or beyond the Company’s control.

Although the Company attempts and has attempted to identify factors that would cause actual actions, events or results to differ materially from those disclosed in forward looking statements, there may be other factors that could cause actual results, performance, achievements or events not to be as anticipated, estimated or intended, and many events are beyond the reasonable control of the Company. Accordingly, readers are cautioned not to place undue reliance on forward looking statements. Forward looking statements in these materials speak only at the date of issue. Subject to any continuing obligations under applicable law or any relevant stock exchange listing rules, in providing this information the company does not undertake any obligation to publicly update or revise any of the forward-looking statements or to advise of any change in events, conditions or circumstances on which any such statement is based.

A summary of the planned Phase 1 RC drilling at Kitotolo-Katamba is provided in the table below.

| Dataset | Hole_ID | hole_type | max_depth | Plan_Northing | Plan_Easting | RL | Dip | Azimuth |
|----------|-----------|-----------|-----------|---------------|--------------|---------|-----|---------|
| Kitotolo | KA18AC001 | RC | 40.00 | 9167356 | 512681 | 631.000 | -60 | 143 |
| Kitotolo | KA18AC002 | RC | 40.00 | 9167227 | 512528 | 631.000 | -60 | 143 |
| Kitotolo | KA18AC003 | RC | 40.00 | 9167097 | 512376 | 631.000 | -60 | 143 |
| Kitotolo | KA18AC004 | RC | 40.00 | 9166968 | 512224 | 631.000 | -60 | 143 |
| Kitotolo | KA18AC005 | RC | 40.00 | 9166838 | 512071 | 631.000 | -60 | 143 |
| Kitotolo | KA18AC006 | RC | 40.00 | 9166709 | 511919 | 631.000 | -60 | 143 |
| Kitotolo | KA18AC007 | RC | 40.00 | 9166579 | 511767 | 631.000 | -60 | 143 |
| Kitotolo | KA18AC008 | RC | 40.00 | 9166450 | 511614 | 631.000 | -60 | 143 |
| Kitotolo | KA18AC009 | RC | 40.00 | 9166321 | 511462 | 631.000 | -60 | 143 |
| Kitotolo | KA18AC010 | RC | 40.00 | 9166191 | 511310 | 631.000 | -60 | 143 |
| Kitotolo | KA18AC011 | RC | 40.00 | 9166062 | 511157 | 631.000 | -60 | 143 |
| Kitotolo | KA18AC012 | RC | 40.00 | 9165932 | 511005 | 631.000 | -60 | 143 |
| Kitotolo | KA18AC013 | RC | 40.00 | 9165803 | 510853 | 631.000 | -60 | 143 |
| Kitotolo | KA18AC014 | RC | 40.00 | 9165673 | 510700 | 631.000 | -60 | 143 |
| Kitotolo | KA18AC015 | RC | 40.00 | 9165544 | 510548 | 631.000 | -60 | 143 |
| Kitotolo | KA18AC016 | RC | 40.00 | 9165414 | 510396 | 631.000 | -60 | 143 |
| Kitotolo | KA18AC017 | RC | 40.00 | 9165285 | 510243 | 631.000 | -60 | 143 |
| Kitotolo | KA18AC018 | RC | 40.00 | 9165156 | 510091 | 631.000 | -60 | 143 |
| Kitotolo | KA18AC019 | RC | 40.00 | 9165026 | 509939 | 631.000 | -60 | 143 |
| Kitotolo | KA18AC020 | RC | 40.00 | 9164897 | 509786 | 631.000 | -60 | 143 |
| Kitotolo | KA18AC021 | RC | 40.00 | 9164767 | 509634 | 631.000 | -60 | 143 |
| Kitotolo | KA18AC022 | RC | 40.00 | 9164638 | 509482 | 631.000 | -60 | 143 |
| Kitotolo | KA18AC023 | RC | 40.00 | 9164508 | 509329 | 631.000 | -60 | 143 |
| Kitotolo | KA18AC024 | RC | 40.00 | 9164379 | 509177 | 631.000 | -60 | 143 |
| Kitotolo | KA18AC025 | RC | 40.00 | 9164250 | 509025 | 631.000 | -60 | 143 |
| Kitotolo | KA18AC026 | RC | 40.00 | 9164120 | 508872 | 631.000 | -60 | 143 |
| Kitotolo | KA18AC027 | RC | 40.00 | 9163991 | 508720 | 631.000 | -60 | 143 |
| Kitotolo | KA18AC028 | RC | 40.00 | 9163861 | 508568 | 631.000 | -60 | 143 |
| Kitotolo | KA18AC029 | RC | 40.00 | 9163732 | 508415 | 631.000 | -60 | 143 |
| Kitotolo | KA18AC030 | RC | 40.00 | 9163602 | 508263 | 631.000 | -60 | 143 |
| Kitotolo | KA18AC031 | RC | 40.00 | 9163473 | 508110 | 631.000 | -60 | 143 |
| Kitotolo | KA18AC032 | RC | 40.00 | 9163344 | 507958 | 631.000 | -60 | 143 |
| Kitotolo | KA18AC033 | RC | 40.00 | 9163214 | 507806 | 631.000 | -60 | 143 |
| Kitotolo | KA18AC034 | RC | 40.00 | 9163085 | 507653 | 631.000 | -60 | 143 |
| Kitotolo | KA18AC035 | RC | 40.00 | 9162955 | 507501 | 631.000 | -60 | 143 |
| Kitotolo | KA18AC036 | RC | 40.00 | 9162826 | 507349 | 631.000 | -60 | 143 |
| Kitotolo | KA18AC037 | RC | 40.00 | 9162696 | 507196 | 631.000 | -60 | 143 |
| Kitotolo | KA18AC038 | RC | 40.00 | 9162567 | 507044 | 631.000 | -60 | 143 |
| Kitotolo | KA18AC039 | RC | 80.00 | 9167438 | 512625 | 631.000 | -60 | 143 |
| Kitotolo | KA18AC040 | RC | 80.00 | 9167309 | 512472 | 631.000 | -60 | 143 |
| Kitotolo | KA18AC041 | RC | 80.00 | 9167179 | 512320 | 631.000 | -60 | 143 |

| Dataset | Hole_ID | hole_type | max_depth | Plan_Northing | Plan_Easting | RL | Dip | Azimuth |
|----------|-----------|-----------|-----------|---------------|--------------|---------|-----|---------|
| Kitotolo | KA18AC042 | RC | 80.00 | 9167050 | 512168 | 631.000 | -60 | 143 |
| Kitotolo | KA18AC043 | RC | 80.00 | 9166920 | 512015 | 631.000 | -60 | 143 |
| Kitotolo | KA18AC044 | RC | 80.00 | 9166791 | 511863 | 631.000 | -60 | 143 |
| Kitotolo | KA18AC045 | RC | 80.00 | 9166662 | 511711 | 631.000 | -60 | 143 |
| Kitotolo | KA18AC046 | RC | 80.00 | 9166532 | 511558 | 631.000 | -60 | 143 |
| Kitotolo | KA18AC047 | RC | 80.00 | 9166403 | 511406 | 631.000 | -60 | 143 |
| Kitotolo | KA18AC048 | RC | 80.00 | 9166273 | 511254 | 631.000 | -60 | 143 |
| Kitotolo | KA18AC049 | RC | 80.00 | 9166144 | 511101 | 631.000 | -60 | 143 |
| Kitotolo | KA18AC050 | RC | 80.00 | 9166014 | 510949 | 631.000 | -60 | 143 |
| Kitotolo | KA18AC051 | RC | 80.00 | 9165885 | 510797 | 631.000 | -60 | 143 |
| Kitotolo | KA18AC052 | RC | 80.00 | 9165756 | 510644 | 631.000 | -60 | 143 |
| Kitotolo | KA18AC053 | RC | 80.00 | 9165626 | 510492 | 631.000 | -60 | 143 |
| Kitotolo | KA18AC054 | RC | 80.00 | 9165497 | 510340 | 631.000 | -60 | 143 |
| Kitotolo | KA18AC055 | RC | 80.00 | 9165367 | 510187 | 631.000 | -60 | 143 |
| Kitotolo | KA18AC056 | RC | 80.00 | 9165238 | 510035 | 631.000 | -60 | 143 |
| Kitotolo | KA18AC057 | RC | 80.00 | 9165108 | 509883 | 631.000 | -60 | 143 |
| Kitotolo | KA18AC058 | RC | 80.00 | 9164979 | 509730 | 631.000 | -60 | 143 |
| Kitotolo | KA18AC059 | RC | 80.00 | 9164850 | 509578 | 631.000 | -60 | 143 |
| Kitotolo | KA18AC060 | RC | 80.00 | 9164720 | 509426 | 631.000 | -60 | 143 |
| Kitotolo | KA18AC061 | RC | 80.00 | 9164591 | 509273 | 631.000 | -60 | 143 |
| Kitotolo | KA18AC062 | RC | 80.00 | 9164461 | 509121 | 631.000 | -60 | 143 |
| Kitotolo | KA18AC063 | RC | 80.00 | 9164332 | 508969 | 631.000 | -60 | 143 |
| Kitotolo | KA18AC064 | RC | 80.00 | 9164202 | 508816 | 631.000 | -60 | 143 |
| Kitotolo | KA18AC065 | RC | 80.00 | 9164073 | 508664 | 631.000 | -60 | 143 |
| Kitotolo | KA18AC066 | RC | 80.00 | 9163944 | 508512 | 631.000 | -60 | 143 |
| Kitotolo | KA18AC067 | RC | 80.00 | 9163814 | 508359 | 631.000 | -60 | 143 |
| Kitotolo | KA18AC068 | RC | 80.00 | 9163685 | 508207 | 631.000 | -60 | 143 |
| Kitotolo | KA18AC069 | RC | 80.00 | 9163555 | 508055 | 631.000 | -60 | 143 |
| Kitotolo | KA18AC070 | RC | 80.00 | 9163426 | 507902 | 631.000 | -60 | 143 |
| Kitotolo | KA18AC071 | RC | 80.00 | 9163296 | 507750 | 631.000 | -60 | 143 |
| Kitotolo | KA18AC072 | RC | 80.00 | 9163167 | 507598 | 631.000 | -60 | 143 |
| Kitotolo | KA18AC073 | RC | 80.00 | 9163037 | 507445 | 631.000 | -60 | 143 |
| Kitotolo | KA18AC074 | RC | 80.00 | 9162908 | 507293 | 631.000 | -60 | 143 |
| Kitotolo | KA18AC075 | RC | 80.00 | 9162779 | 507141 | 631.000 | -60 | 143 |
| Kitotolo | KA18AC076 | RC | 80.00 | 9162649 | 506988 | 631.000 | -60 | 143 |
| Kitotolo | KA18AC077 | RC | 120.00 | 9167522 | 512568 | 631.000 | -60 | 143 |
| Kitotolo | KA18AC078 | RC | 120.00 | 9167393 | 512415 | 631.000 | -60 | 143 |
| Kitotolo | KA18AC079 | RC | 120.00 | 9167263 | 512263 | 631.000 | -60 | 143 |
| Kitotolo | KA18AC080 | RC | 120.00 | 9167134 | 512111 | 631.000 | -60 | 143 |
| Kitotolo | KA18AC081 | RC | 120.00 | 9167004 | 511958 | 631.000 | -60 | 143 |
| Kitotolo | KA18AC082 | RC | 120.00 | 9166875 | 511806 | 631.000 | -60 | 143 |
| Kitotolo | KA18AC083 | RC | 120.00 | 9166746 | 511654 | 631.000 | -60 | 143 |
| Kitotolo | KA18AC084 | RC | 120.00 | 9166616 | 511501 | 631.000 | -60 | 143 |
| Kitotolo | KA18AC085 | RC | 120.00 | 9166487 | 511349 | 631.000 | -60 | 143 |

| Dataset | Hole_ID | hole_type | max_depth | Plan_Northing | Plan_Easting | RL | Dip | Azimuth |
|----------|-----------|-----------|-----------|---------------|--------------|---------|-----|---------|
| Kitotolo | KA18AC086 | RC | 120.00 | 9166357 | 511197 | 631.000 | -60 | 143 |
| Kitotolo | KA18AC087 | RC | 120.00 | 9166228 | 511044 | 631.000 | -60 | 143 |
| Kitotolo | KA18AC088 | RC | 120.00 | 9166098 | 510892 | 631.000 | -60 | 143 |
| Kitotolo | KA18AC089 | RC | 120.00 | 9165969 | 510740 | 631.000 | -60 | 143 |
| Kitotolo | KA18AC090 | RC | 120.00 | 9165840 | 510587 | 631.000 | -60 | 143 |
| Kitotolo | KA18AC091 | RC | 120.00 | 9165710 | 510435 | 631.000 | -60 | 143 |
| Kitotolo | KA18AC092 | RC | 120.00 | 9165581 | 510283 | 631.000 | -60 | 143 |
| Kitotolo | KA18AC093 | RC | 120.00 | 9165451 | 510130 | 631.000 | -60 | 143 |
| Kitotolo | KA18AC094 | RC | 120.00 | 9165322 | 509978 | 631.000 | -60 | 143 |
| Kitotolo | KA18AC095 | RC | 120.00 | 9165192 | 509826 | 631.000 | -60 | 143 |
| Kitotolo | KA18AC096 | RC | 120.00 | 9165063 | 509673 | 631.000 | -60 | 143 |
| Kitotolo | KA18AC097 | RC | 120.00 | 9164934 | 509521 | 631.000 | -60 | 143 |
| Kitotolo | KA18AC098 | RC | 120.00 | 9164804 | 509369 | 631.000 | -60 | 143 |
| Kitotolo | KA18AC099 | RC | 120.00 | 9164675 | 509216 | 631.000 | -60 | 143 |
| Kitotolo | KA18AC100 | RC | 120.00 | 9164545 | 509064 | 631.000 | -60 | 143 |
| Kitotolo | KA18AC101 | RC | 120.00 | 9164416 | 508912 | 631.000 | -60 | 143 |
| Kitotolo | KA18AC102 | RC | 120.00 | 9164286 | 508759 | 631.000 | -60 | 143 |
| Kitotolo | KA18AC103 | RC | 120.00 | 9164157 | 508607 | 631.000 | -60 | 143 |
| Kitotolo | KA18AC104 | RC | 120.00 | 9164028 | 508455 | 631.000 | -60 | 143 |
| Kitotolo | KA18AC105 | RC | 120.00 | 9163898 | 508302 | 631.000 | -60 | 143 |
| Kitotolo | KA18AC106 | RC | 120.00 | 9163769 | 508150 | 631.000 | -60 | 143 |
| Kitotolo | KA18AC107 | RC | 120.00 | 9163639 | 507998 | 631.000 | -60 | 143 |
| Kitotolo | KA18AC108 | RC | 120.00 | 9163510 | 507845 | 631.000 | -60 | 143 |
| Kitotolo | KA18AC109 | RC | 120.00 | 9163380 | 507693 | 631.000 | -60 | 143 |
| Kitotolo | KA18AC110 | RC | 120.00 | 9163251 | 507541 | 631.000 | -60 | 143 |
| Kitotolo | KA18AC111 | RC | 120.00 | 9163121 | 507388 | 631.000 | -60 | 143 |
| Kitotolo | KA18AC112 | RC | 120.00 | 9162992 | 507236 | 631.000 | -60 | 143 |
| Kitotolo | KA18AC113 | RC | 120.00 | 9162863 | 507084 | 631.000 | -60 | 143 |
| Kitotolo | KA18AC114 | RC | 120.00 | 9162733 | 506931 | 631.000 | -60 | 143 |
| Kitotolo | KA18AC115 | RC | 150.00 | 9167597 | 512504 | 631.000 | -60 | 143 |
| Kitotolo | KA18AC116 | RC | 150.00 | 9167468 | 512351 | 631.000 | -60 | 143 |
| Kitotolo | KA18AC117 | RC | 150.00 | 9167338 | 512199 | 631.000 | -60 | 143 |
| Kitotolo | KA18AC118 | RC | 150.00 | 9167209 | 512047 | 631.000 | -60 | 143 |
| Kitotolo | KA18AC119 | RC | 150.00 | 9167079 | 511894 | 631.000 | -60 | 143 |
| Kitotolo | KA18AC120 | RC | 150.00 | 9166950 | 511742 | 631.000 | -60 | 143 |
| Kitotolo | KA18AC121 | RC | 150.00 | 9166821 | 511590 | 631.000 | -60 | 143 |
| Kitotolo | KA18AC122 | RC | 150.00 | 9166691 | 511437 | 631.000 | -60 | 143 |
| Kitotolo | KA18AC123 | RC | 150.00 | 9166562 | 511285 | 631.000 | -60 | 143 |
| Kitotolo | KA18AC124 | RC | 150.00 | 9166432 | 511133 | 631.000 | -60 | 143 |
| Kitotolo | KA18AC125 | RC | 150.00 | 9166303 | 510980 | 631.000 | -60 | 143 |
| Kitotolo | KA18AC126 | RC | 150.00 | 9166173 | 510828 | 631.000 | -60 | 143 |
| Kitotolo | KA18AC127 | RC | 150.00 | 9166044 | 510676 | 631.000 | -60 | 143 |
| Kitotolo | KA18AC128 | RC | 150.00 | 9165915 | 510523 | 631.000 | -60 | 143 |
| Kitotolo | KA18AC129 | RC | 150.00 | 9165785 | 510371 | 631.000 | -60 | 143 |

| Dataset | Hole_ID | hole_type | max_depth | Plan_Northing | Plan_Easting | RL | Dip | Azimuth |
|----------|-----------|-----------|-----------|---------------|--------------|---------|-----|---------|
| Kitotolo | KA18AC130 | RC | 150.00 | 9165656 | 510219 | 631.000 | -60 | 143 |
| Kitotolo | KA18AC131 | RC | 150.00 | 9165526 | 510066 | 631.000 | -60 | 143 |
| Kitotolo | KA18AC132 | RC | 150.00 | 9165397 | 509914 | 631.000 | -60 | 143 |
| Kitotolo | KA18AC133 | RC | 150.00 | 9165267 | 509762 | 631.000 | -60 | 143 |
| Kitotolo | KA18AC134 | RC | 150.00 | 9165138 | 509609 | 631.000 | -60 | 143 |
| Kitotolo | KA18AC135 | RC | 150.00 | 9165009 | 509457 | 631.000 | -60 | 143 |
| Kitotolo | KA18AC136 | RC | 150.00 | 9164879 | 509305 | 631.000 | -60 | 143 |
| Kitotolo | KA18AC137 | RC | 150.00 | 9164750 | 509152 | 631.000 | -60 | 143 |
| Kitotolo | KA18AC138 | RC | 150.00 | 9164620 | 509000 | 631.000 | -60 | 143 |
| Kitotolo | KA18AC139 | RC | 150.00 | 9164491 | 508848 | 631.000 | -60 | 143 |
| Kitotolo | KA18AC140 | RC | 150.00 | 9164361 | 508695 | 631.000 | -60 | 143 |
| Kitotolo | KA18AC141 | RC | 150.00 | 9164232 | 508543 | 631.000 | -60 | 143 |
| Kitotolo | KA18AC142 | RC | 150.00 | 9164103 | 508391 | 631.000 | -60 | 143 |
| Kitotolo | KA18AC143 | RC | 150.00 | 9163973 | 508238 | 631.000 | -60 | 143 |
| Kitotolo | KA18AC144 | RC | 150.00 | 9163844 | 508086 | 631.000 | -60 | 143 |
| Kitotolo | KA18AC145 | RC | 150.00 | 9163714 | 507934 | 631.000 | -60 | 143 |
| Kitotolo | KA18AC146 | RC | 150.00 | 9163585 | 507781 | 631.000 | -60 | 143 |
| Kitotolo | KA18AC147 | RC | 150.00 | 9163455 | 507629 | 631.000 | -60 | 143 |
| Kitotolo | KA18AC148 | RC | 150.00 | 9163326 | 507477 | 631.000 | -60 | 143 |
| Kitotolo | KA18AC149 | RC | 150.00 | 9163196 | 507324 | 631.000 | -60 | 143 |
| Kitotolo | KA18AC150 | RC | 150.00 | 9163067 | 507172 | 631.000 | -60 | 143 |
| Kitotolo | KA18AC151 | RC | 150.00 | 9162938 | 507020 | 631.000 | -60 | 143 |
| Kitotolo | KA18AC152 | RC | 150.00 | 9162808 | 506867 | 631.000 | -60 | 143 |