

For personal use only

AGM 26 November 2018

Troy Resources Limited



TROY RESOURCES LIMITED



TROY RESOURCES LIMITED

# Disclaimer

This presentation has been prepared by Troy Resources Limited (Troy).

- **Summary of information:** This presentation contains general and background information about Troy's activities current as at the date of the presentation and should not be considered to be comprehensive or to comprise all the information that an investor should consider when making an investment decision. The information is provided in summary form, has not been independently verified, and should not be considered to be comprehensive or complete. It should be read solely in conjunction with the oral briefing provided by Troy and all other documents provided to you by Troy. Troy is not responsible for providing updated information and assumes no responsibility to do so.
- **Not financial product advice:** This presentation is not financial product, investment advice or a recommendation to acquire Troy securities and has been prepared without taking into account the objectives, financial situation or needs of individuals. Before making an investment decision prospective investors should consider the appropriateness of the information having regard to their own objectives, financial situation and needs, and seek legal, taxation and financial advice appropriate to their jurisdiction and circumstances. Troy is not licensed to provide financial product advice in respect of its securities or any other financial products. Cooling off rights do not apply to the acquisition of Troy securities. Troy assumes that the recipient is capable of making its own independent assessment, without reliance on this document, of the information and any potential investment and will conduct its own investigation.
- **Disclaimer:** Each of Troy and its related bodies corporate and each of its respective directors, agents, officers, employees and advisers expressly disclaim, to the maximum extent permitted by law, all liabilities (however caused, including negligence) in respect of, make no representations regarding, and take no responsibility for, any part of this presentation and make no representation or warranty as to the currency, accuracy, reliability or completeness of any information, statements, opinions, conclusions or representations contained in this presentation. In particular, this presentation does not constitute, and shall not be relied upon as, a promise, representation, warranty or guarantee as to the past, present or the future performance of Troy.
- **Forward looking statements:** This presentation contains "forward-looking statements" and "forward-looking information", including statements and forecasts which include without limitation, expectations regarding future performance, costs, production levels or rates, mineral reserves and resources, the financial position of Troy, industry growth and other trend projections. Often, but not always, forward-looking information can be identified by the use of words such as "plans", "expects", "is expected", "is expecting", "budget", "scheduled", "estimates", "forecasts", "intends", "anticipates", or "believes", or variations (including negative variations) of such words and phrases, or state that certain actions, events or results "may", "could", "would", "might", or "will" be taken, occur or be achieved. Such information is based on assumptions and judgements of management regarding future events and results. The purpose of forward-looking information is to provide the audience with information about management's expectations and plans. Readers are cautioned that forward-looking information involves known and unknown risks, uncertainties and other factors which may cause the actual results, performance or achievements of Troy and/or its subsidiaries to be materially different from any future results, performance or achievements expressed or implied by the forward-looking information. Such factors include, among others, changes in market conditions, future prices of gold, the actual results of current production, development and/or exploration activities, changes in project parameters as plans continue to be refined, variations in grade or recovery rates, plant and/or equipment failure and the possibility of cost overruns. Forward-looking information and statements are based on the reasonable assumptions, estimates, analysis and opinions of management made in light of its experience and its perception of trends, current conditions and expected developments, as well as other factors that management believes to be relevant and reasonable in the circumstances at the date such statements are made, but which may prove to be incorrect. Troy believes that the assumptions and expectations reflected in such forward-looking statements and information are reasonable. Readers are cautioned that the foregoing list is not exhaustive of all factors and assumptions which may have been used. Troy does not undertake to update any forward-looking information or statements, except in accordance with applicable securities laws.
- **Not an offer:** This presentation is not, and should not be considered as, an offer or an invitation to acquire securities in Troy or any other financial products and neither this document nor any of its contents will form the basis of any contract or commitment. This presentation is not a prospectus. Offers of securities in Troy will only be made in places in which, or to persons to whom it would be lawful to make such offers. This presentation must not be disclosed to any other party and does not carry any right of publication. Neither this presentation nor any of its contents may be reproduced or used for any other purpose without the prior written consent of Troy.
- **Monetary values:** Unless otherwise stated, all dollar values are in Australian dollars (A\$). The information in this presentation remains subject to change without notice.

For personal use only



For personal use only



**Sample from Smarts 3**



## Troy Guyana Inc. facts

- Total direct employees 406
- Contractors 99
- Expats mainly from South America 22 or 6%
- Amerindians in the workforce is 44
- Funds injected into the Guyana Economy over the last 3 years US\$ 149.5 Million.
- The company retains a clean sheet in terms of Environmental performance.
- All tenements are in good standing.
- Relations with the Guyana Gvt remains good.
- Strong community and Gvt support



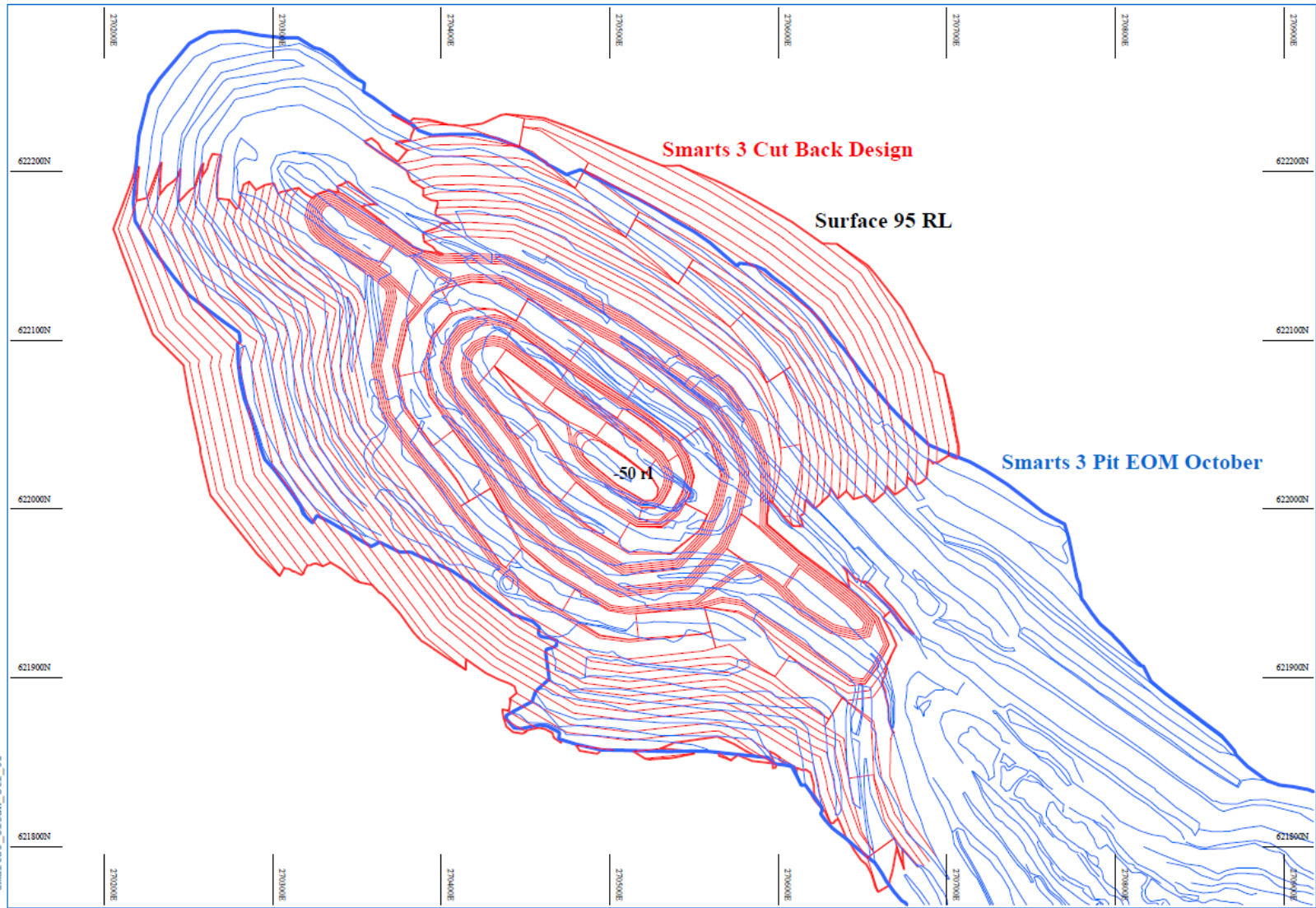
# Mining and Processing

- Mining has ceased in Smarts 1,2,3 and 4
- Smarts 3 is the subject of assessment and further work to define designs for a cut-back
- All current mining is focused on Hicks 1 and Hicks 2 including the extension of Hicks 2
- Spearpoint and Larkin are subject to approvals and scheduled to come into production during 2019
- The processing plant is operating at design with no major issues except normal wear and tear.
- Planning is under way for road access to Ohio Creek area early in the new year.
- Current ROM stockpiles ~ 200,000 t @ 1.42 g/t



# Smarts 3 cut back Design

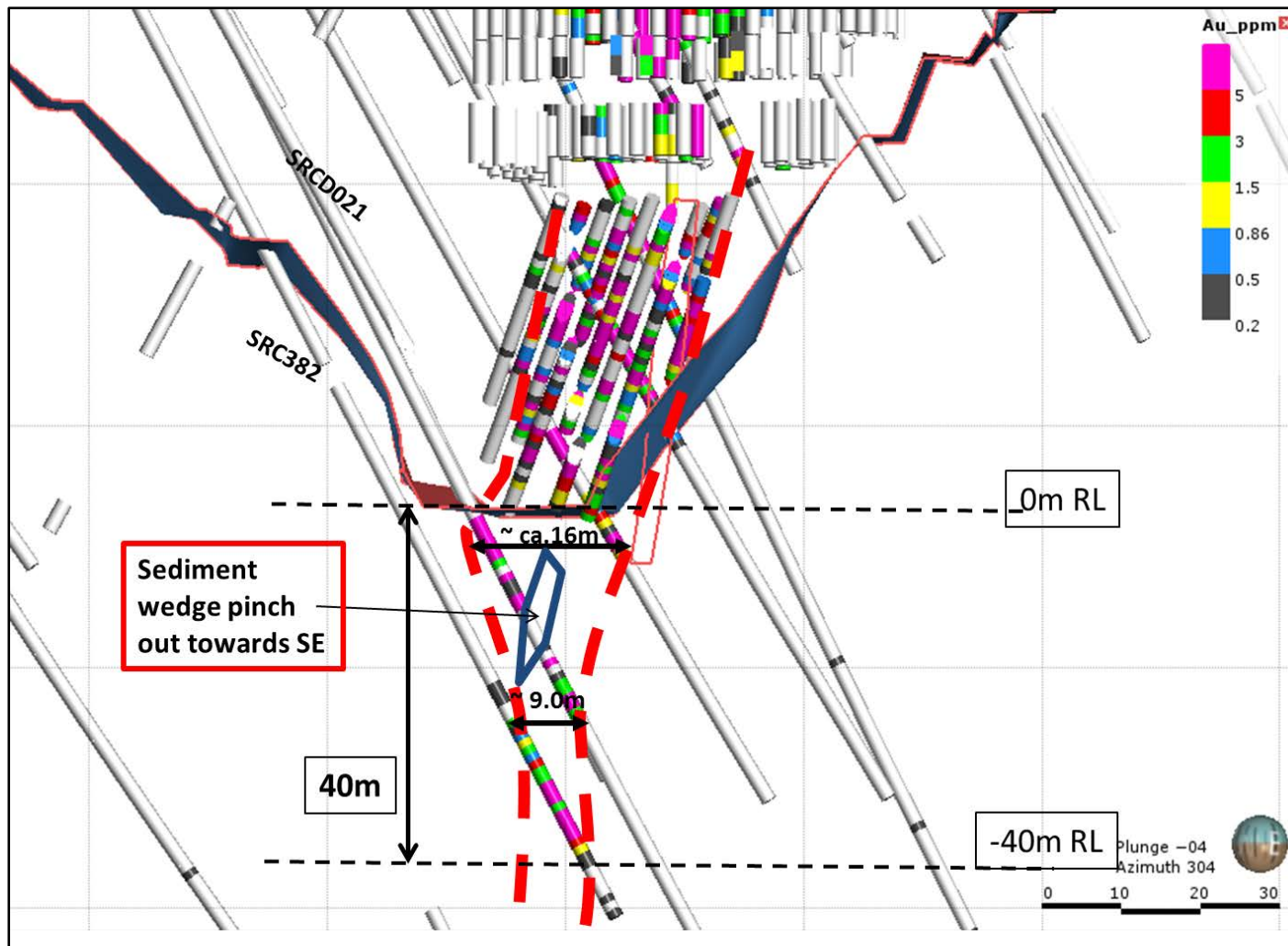
For personal use only





# Smarts 3 ore projection

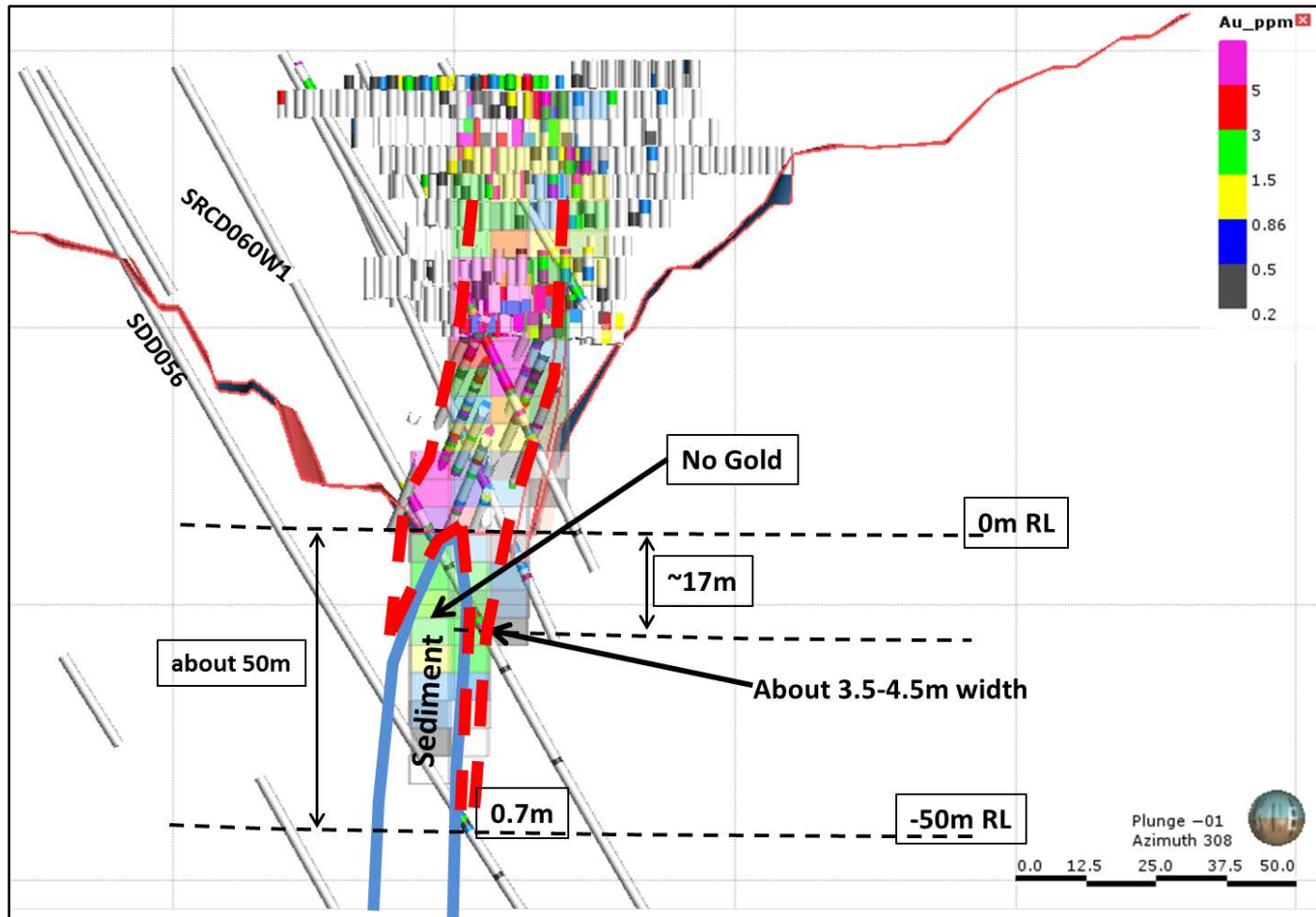
For personal use only





# Smarts 3 Ore Projection

For personal use only

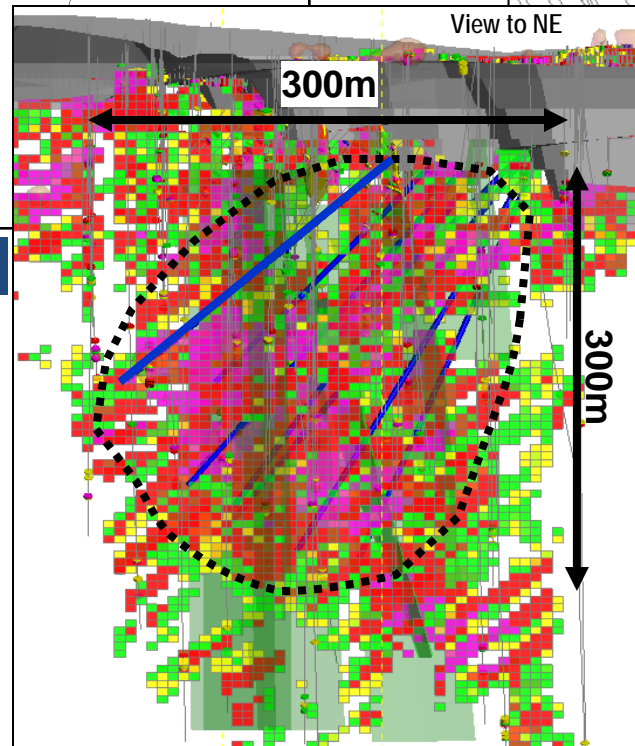
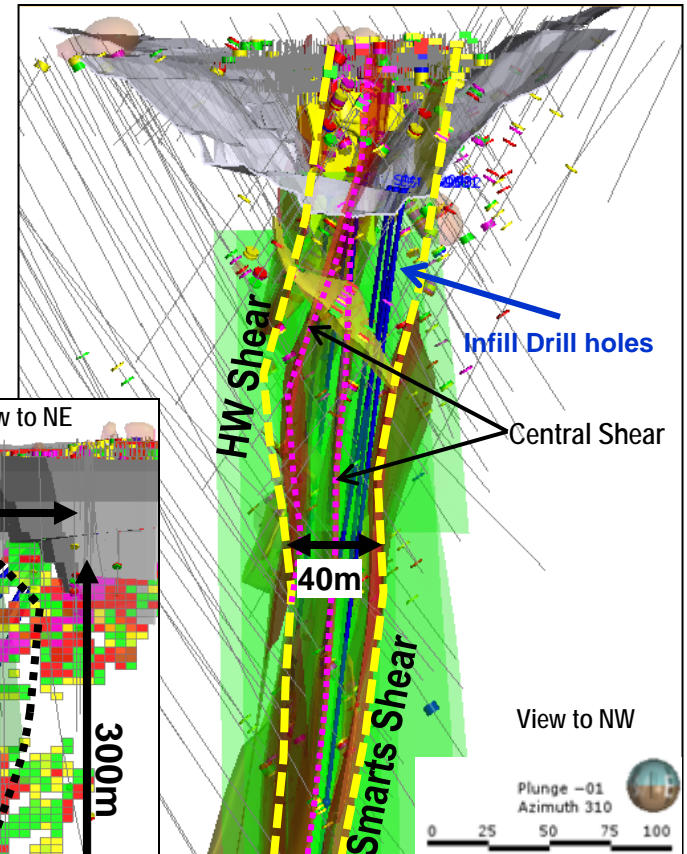
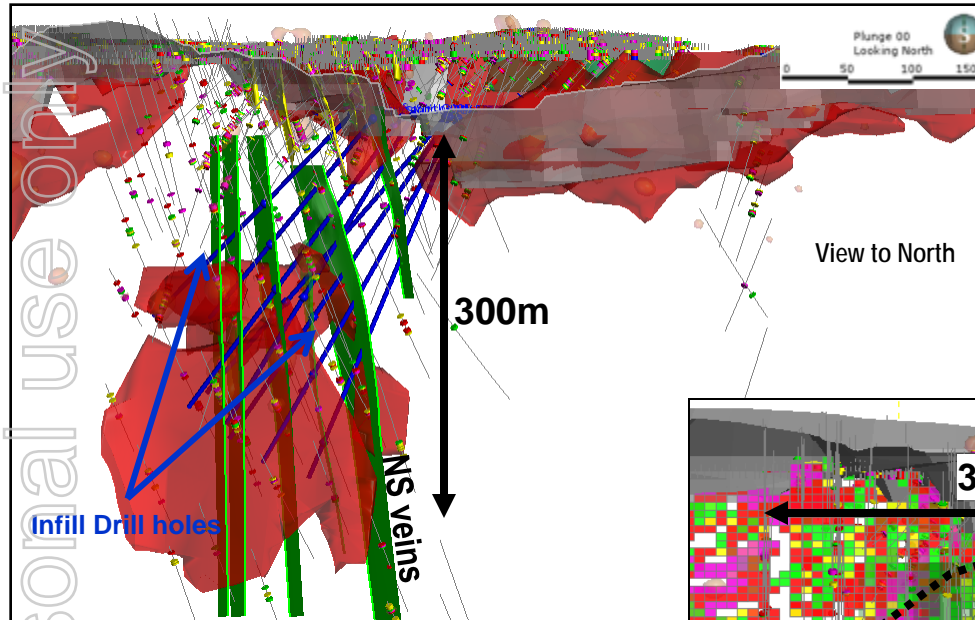






# Smarts UG Diamond Drilling for PFS and Geotech

TROY RESOURCES LIMITED



## UG Drilling Program

- 8 Diamond drill holes to test UG potential
- Drilling targeting the N-S quartz veins and favorable stratigraphy between the HW shear and the Smarts Shear.
- A total of 2,300m with holes dipping between  $-40^\circ$  to  $-65^\circ$  and Azimuth between  $290^\circ$  and  $310^\circ$
- Drilling from Stage 2 and Stage 4 ramp
- Drilling test an area of 300 by 300 with 15m(diagonal) to 40m(vertical) centers

**Aim is to test Feasibility of UG Mining Potential:**  
**808,000t @ 5.0g/t**  
**containing 131,000oz Gold**



# Hicks 1 Mining - Facts

WNW

Hicks 1 Pit

ESE

## Hicks 1 mine

- Currently mining to the 30m RL level
- Mining in Saprolite with 7m berm width and 50° Slope angle
- At around 30m RL transitional zone into hard rock
- Short haulage distances to the waste dump

NE

Hicks 1 Pit

SW

Waste dump



# Hicks 2 Mining - Facts

For personal use only



## Hicks 2 Pit

- Currently mining to the 20m RL and the 40m RL in the extension
- Mining in fresh rock material with drill and blast
- Mining with 7m berm and 70° Pit slope in Fresh rock
- SE end against the NE trending late dyke
- Short haulage distance to waste dump





TROY RESOURCES LIMITED

For personal use only



Upside Potential

# REGIONAL EXPLORATION

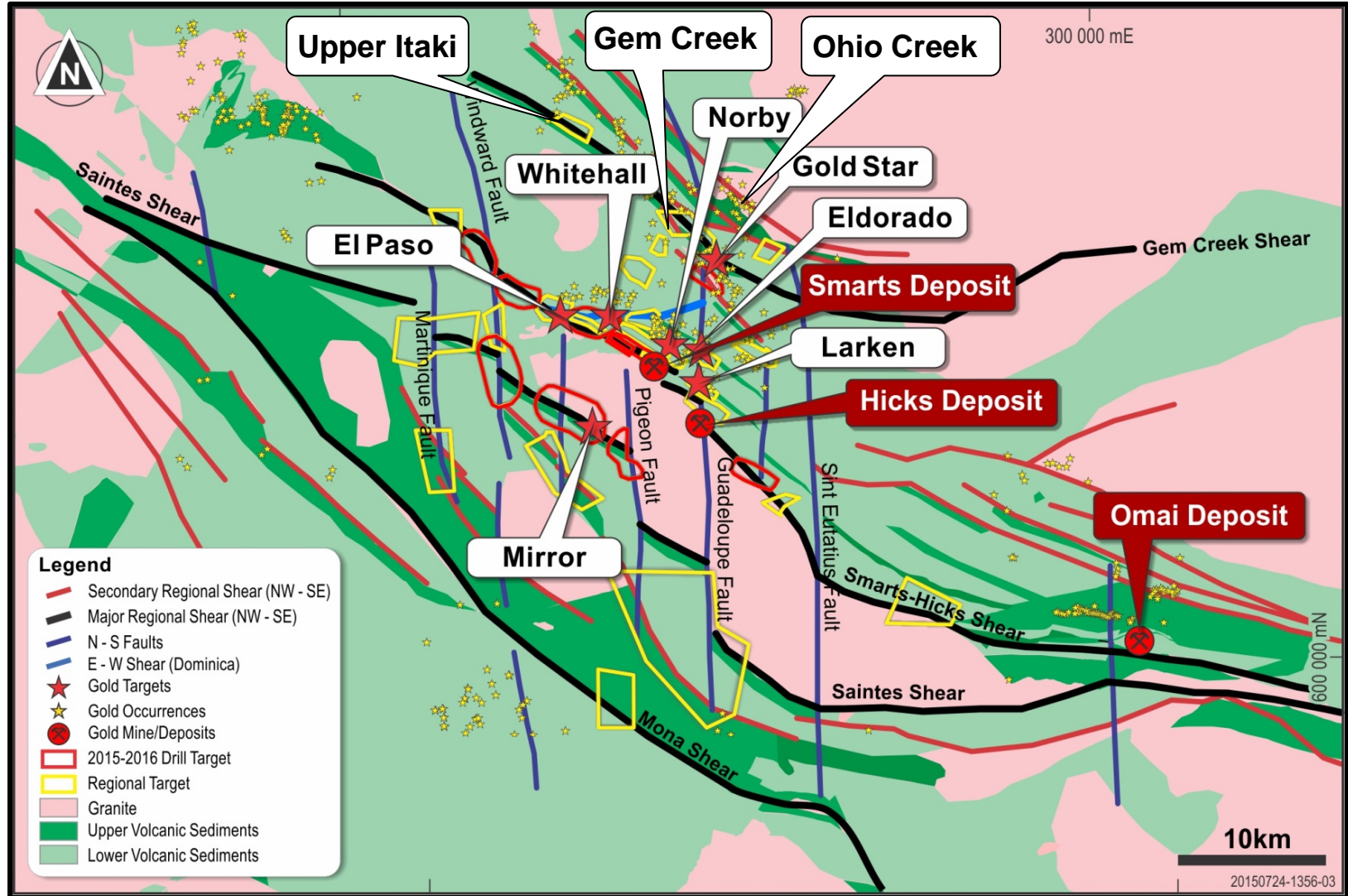


# Karouni Gold Camp Multiple Structures

re-focus on evaluated Targets

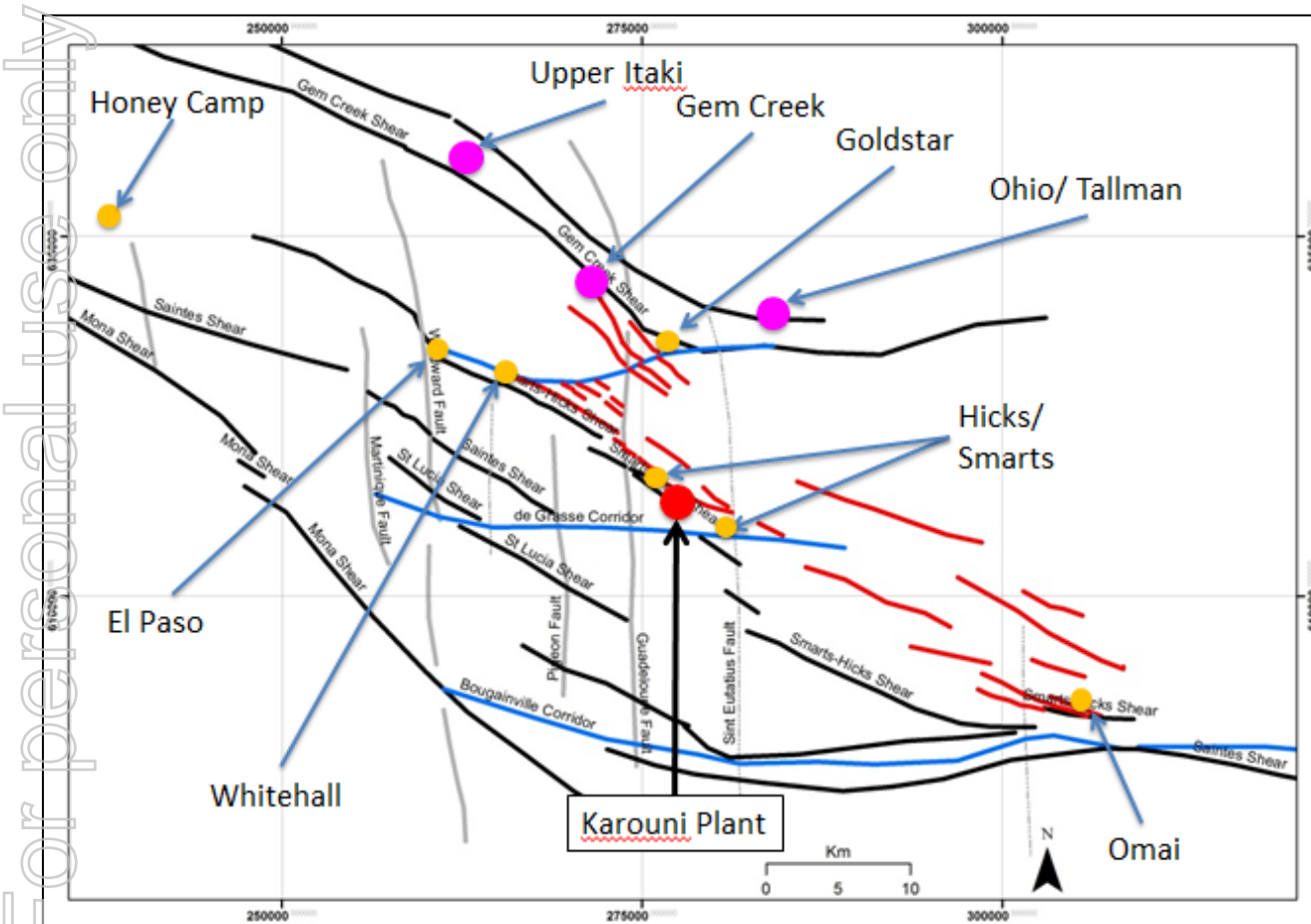
TROY RESOURCES LIMITED

For personal use only





# Exploration Potential at the Karouni Project



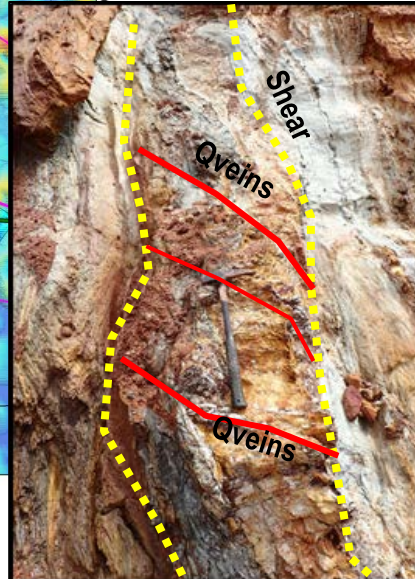
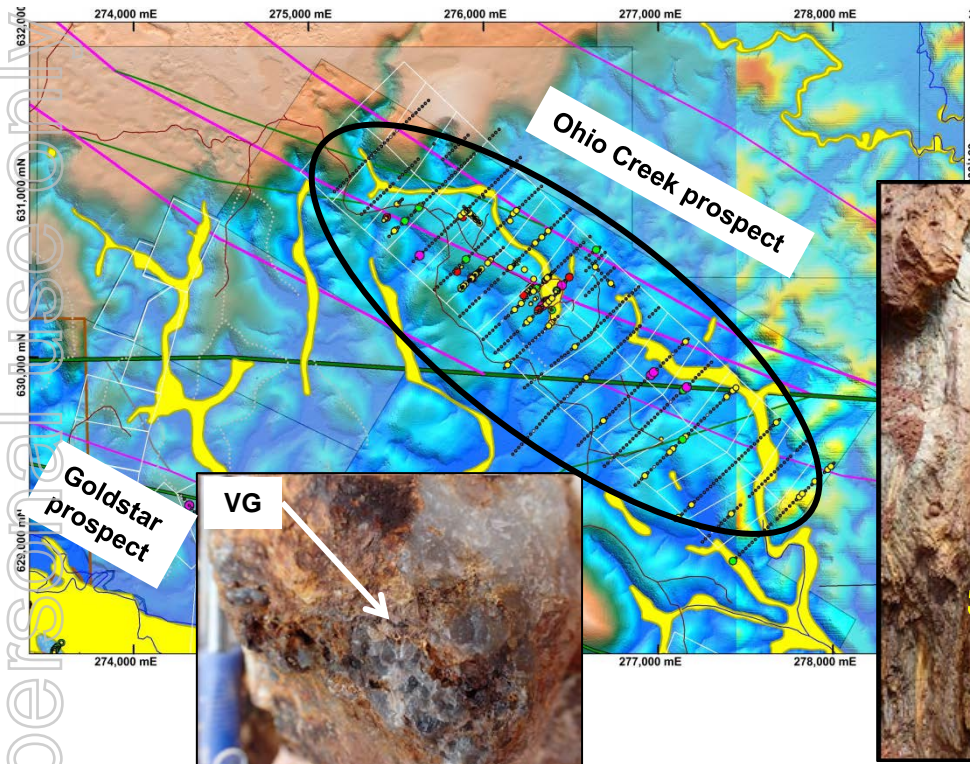
## Exploration Potential

- ❑ High Exploration potential with over 20km Shear corridor and saprolite workings
- ❑ ~ 850 sqkm tenement holding in good standing
- ❑ Substantial artisanal gold mining with strong production since early 20 century
- ❑ NO modern Exploration along the Gem Creek – Upper Itaki Corridor



# Ohio Creek property – New opportunity with highest single Gold intercept in DD core

TROY RESOURCES LIMITED

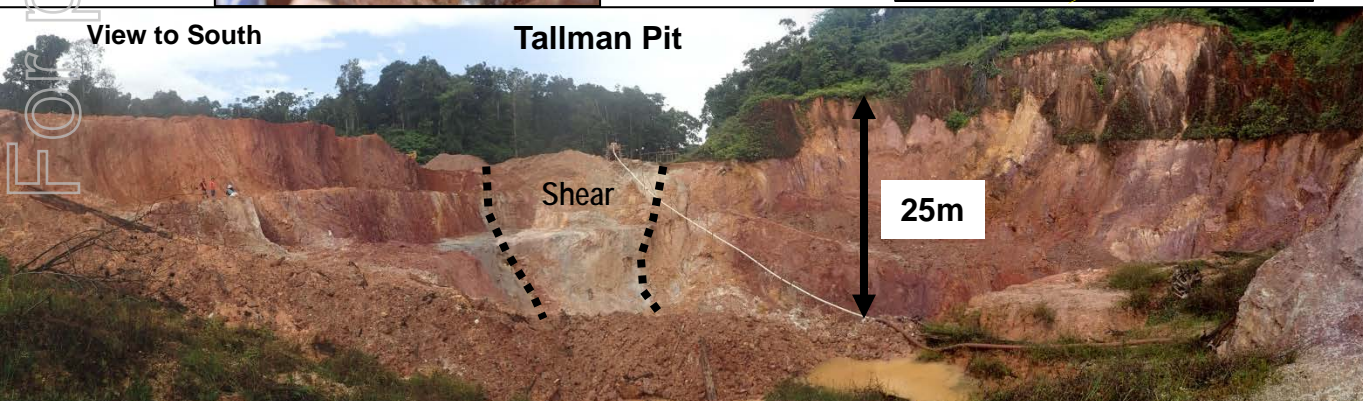


## Historic Exploration

- Cathedral Gold completed an 200m by 40m Auger geochem Program in 1995
- A follow up Diamond drilling program for 11 NQ drill holes for a total of 1,364m
- Better intercepts including:
  - 6.68m at 1.1g/t gold from 5.6m
  - 2m at 5.37g/t Gold from 20.28**
  - 1m at 868.74g/t Gold from 61m**
  - 1.1m at 7.21 g/t Gold from 68.9m
- Drilling was reported with poor recoveries
- Current intensive Saprolite working in the areas of best drilling intercepts

## Exploration work

- Detailed Field reconnaissance work
- Detailed Mapping and sampling program - **ongoing**
- Identifying favored rock units with handheld XRF
- Structural Interpretation - **completed**
- **First interpretation confirm Auger Gold anomalies along E-W and WNW structures**
- Plan trenching and drilling program

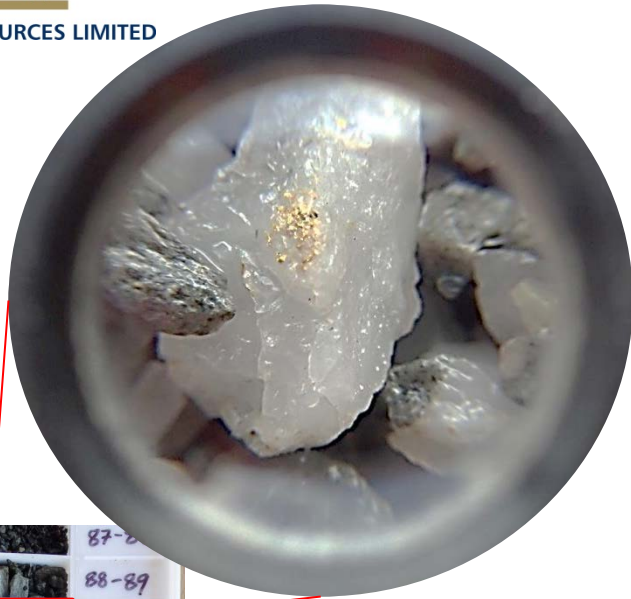




TROY RESOURCES LIMITED

# Ohio Creek prospect – Drilling

For personal use only



Schramm RC drill rig with Compressor and booster on TRC001



TRC013 – 89m - 90m  
visible Gold



**Tallman working**  
**Local Guyanese Small scale operation**  
**20m to 25m deep Saprolite working**





TROY RESOURCES LIMITED

## Field work in Gem Creek and Upper Itaki



Reconnaissance mapping – Upper Itaki



Mapping workings – Gem Creek



Auger sampling – Gem Creek

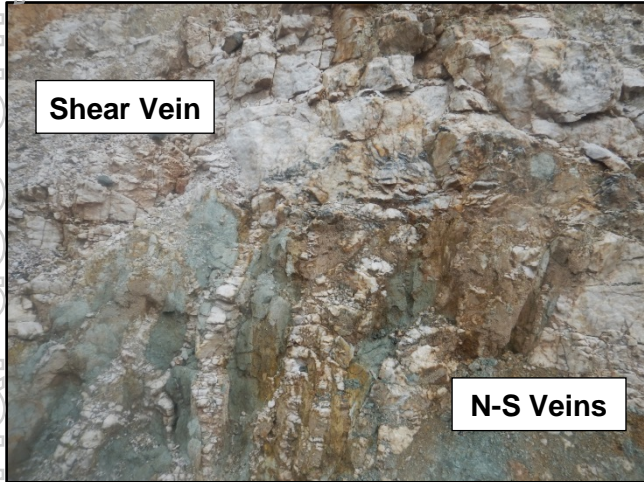


For personal use only



# Goldstar/Ohio Trend – comparison with Honey Camp/ Nine Mile and Omai Mine

Honey Camp



Shear Vein

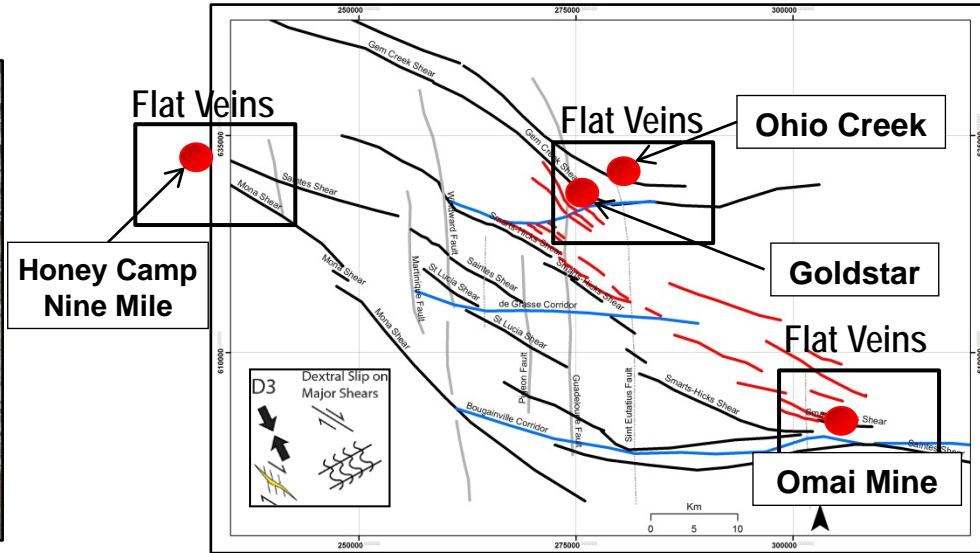
N-S Veins

Honey Camp Pit



Large E-W Vein

Scale



Flat Veins

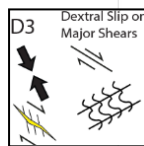
Flat Veins

Ohio Creek

Goldstar

Flat Veins

Omai Mine



Honey Camp  
Nine Mile

- Nine Mile Pit mined between 1987 and 2000. Produced 71,113 ounces of gold at an average grade of 18.6g/t Au.
- Drill hole samples from 2010 drilling averaged 1.5 – 3 g/t Au.
- Mineralisation associated with a EW, shallow dipping main vein and breccia zone and a set of steep NW and NE striking conjugate veins.
- Majority of grade is associated with the margins of the quartz veins, which are preferentially worked by local miners.
- Reconciles well with the exploration model – expect flat dipping veins to develop in EW segments (e.g. Omai, Ohio, Goldstar).

For personal use only



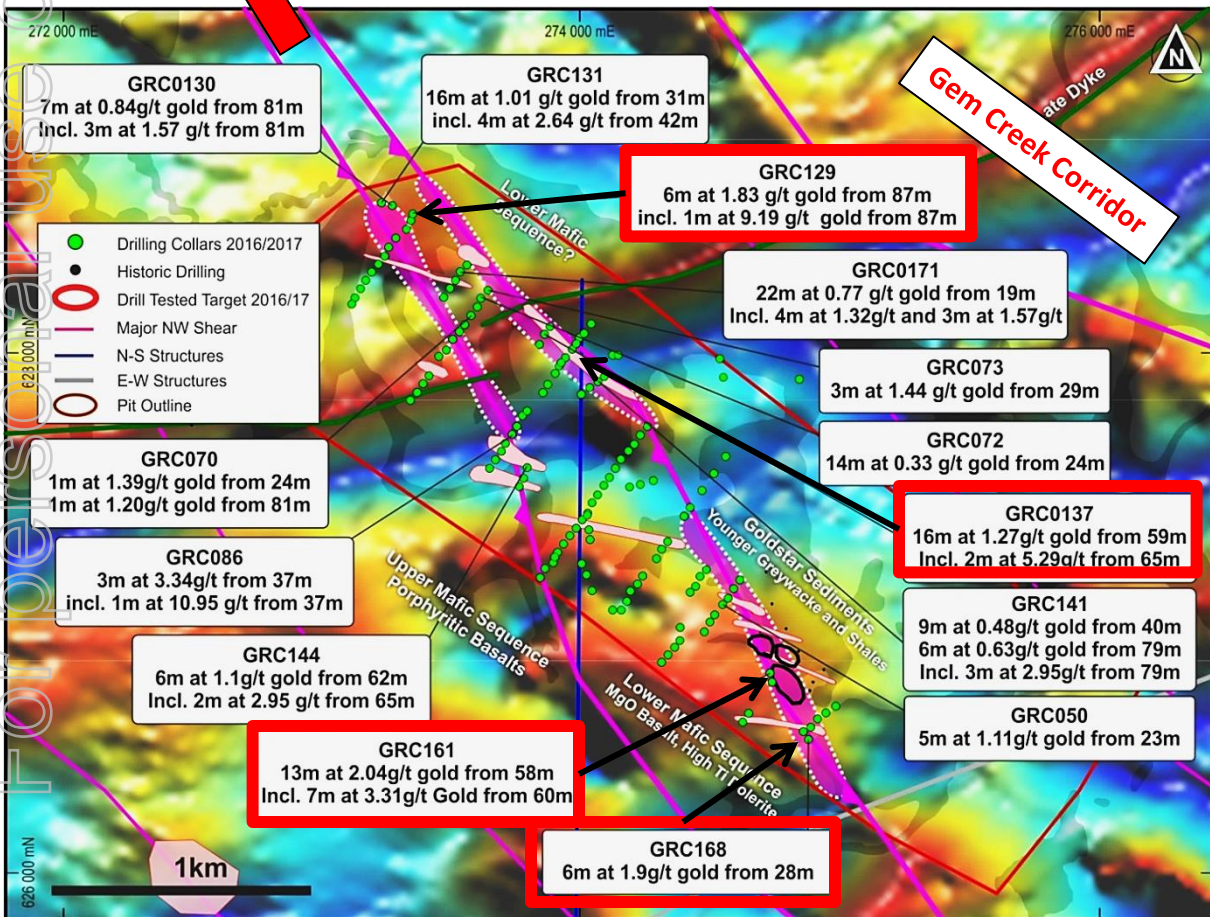
# Goldstar – Innovative Techniques Leading To Success

TROY RESOURCES LIMITED

“A Smarts sized lode could still fit between drill lines”

## Gem Creek prospect

**UN-TESTED along Strike for over 12km to the North West – Gem Creek prospect!**



### First Greenfield Exploration (2012)

- Auger Sampling with XRF geochemistry
- Data evaluation with IoGas identified wide Chromium and Nickel anomaly – the host of Smarts and Hicks deposit
- Mapping of pork knocker workings located on margins of Chromium anomaly

### First Pass RC Drilling (2016/ 17)

- 11,505m drilled for 137 holes (RC drilling)
- 15+ ore grade hits, including:

*7m at 3.31g/t Au (13m at 2.04g/t)  
 3m at 3.08g/t Au  
 3m at 4.35g/t Au  
 4m at 2.64g/t Au*

- Multiple porphyry intrusive recognized within high-Cr corridor
- Mineralisation associated to Quartz veining and Felsic porphyries

### Plan Diamond Drilling (2018)

- Diamond Drilling under best Gold intercepts to better understand Mineralisation

\* For details of drilling results refer to the Company's announcement of 26 April 2017 titled "Exploration Update".

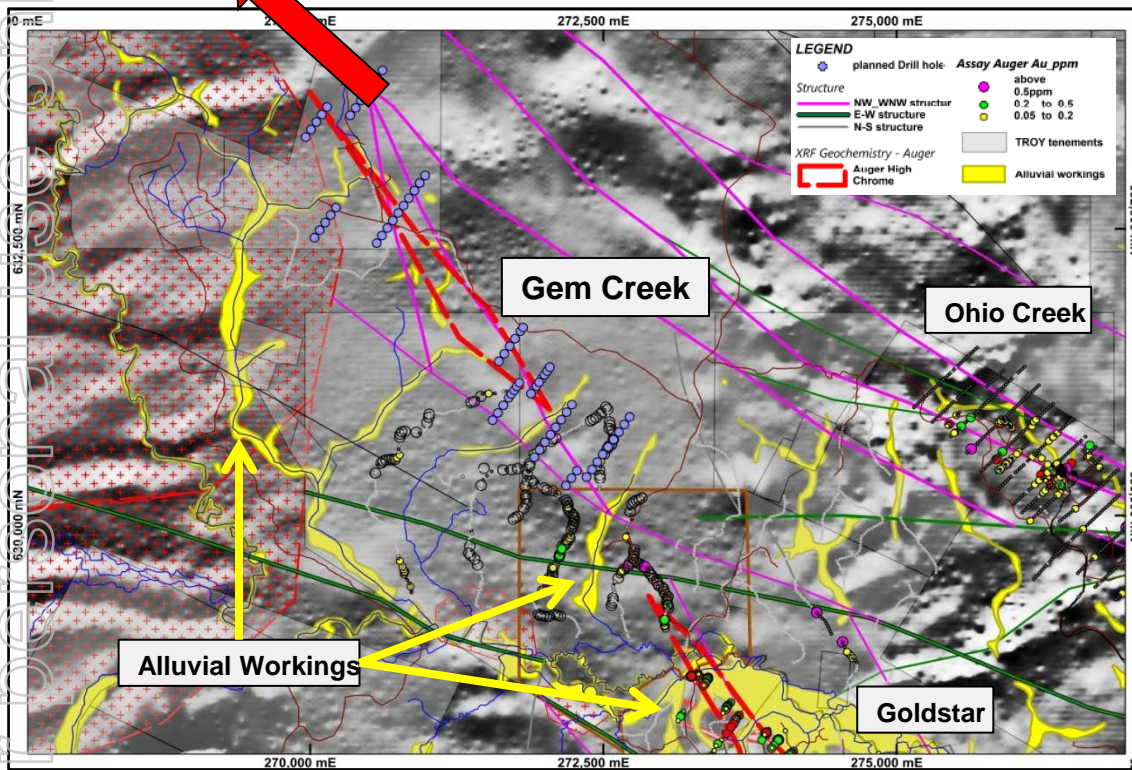


TROY RESOURCES LIMITED

# Gem Creek Trend – Follow up Exploration Mapping, Sampling and Drilling

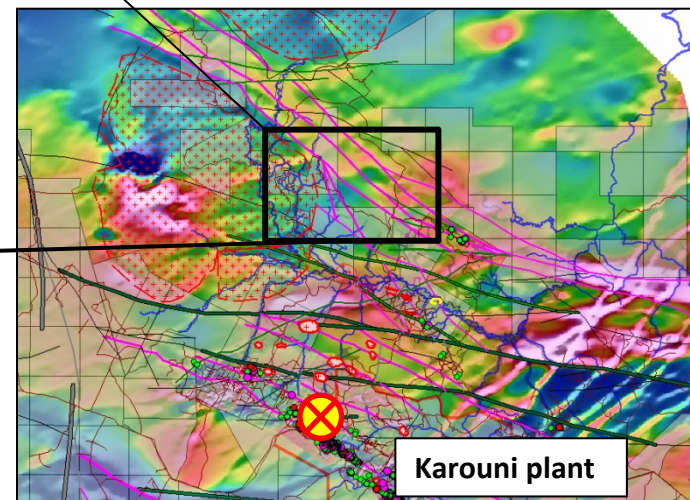
Upper Itaki

**UN-TESTED Strike continues for over 7km to the North West – Upper Itaki prospect!**



## Auger Sampling in 2012

- Auger Sampling with XRF geochemistry identified the continuation of Chromium and Nickel anomaly along NNW strike from Goldstar
- Limited mapping located carbonate spotted high Chrome unit
- Auger Gold assays show up to 4.03g/t Au
- Structure interpretation of consultants are in line with on-site interpretation!
- Azimuth Resources Auger Gold samples suggest anomaly along E-W structure – major mineralized structures in West Africa



## Next Exploration Step – Mapping and RC Drilling

- Map out the High Chrome corridor
- Planned are about 60 AC/RC scout drill holes for 2,800m to identify Lithology and Gold anomalism
- Drilling along 6 stratigraphy lines to test 4,5 km of strike over the main corridor
- Milestone 2 Gate – intercept favorable Stratigraphy and Gold mineralization in at least two (2) drill lines



TROY RESOURCES LIMITED

Thank you for your attendance.

For personal use only

